

*The  
Cadmea*

1942









*The Cadmus Club*

Introduces . . . . .





HERBERT RIORDAN ..... Editor  
LOIS BEATY ..... Associate Editor  
JIM BROCE ..... Business Manager  
LYLE JONES ..... Advertising Manager



*The*

*Cadmea*

*1942*

PUBLISHED ANNUALLY AT  
BRISTOL TENNESSEE HIGH SCHOOL



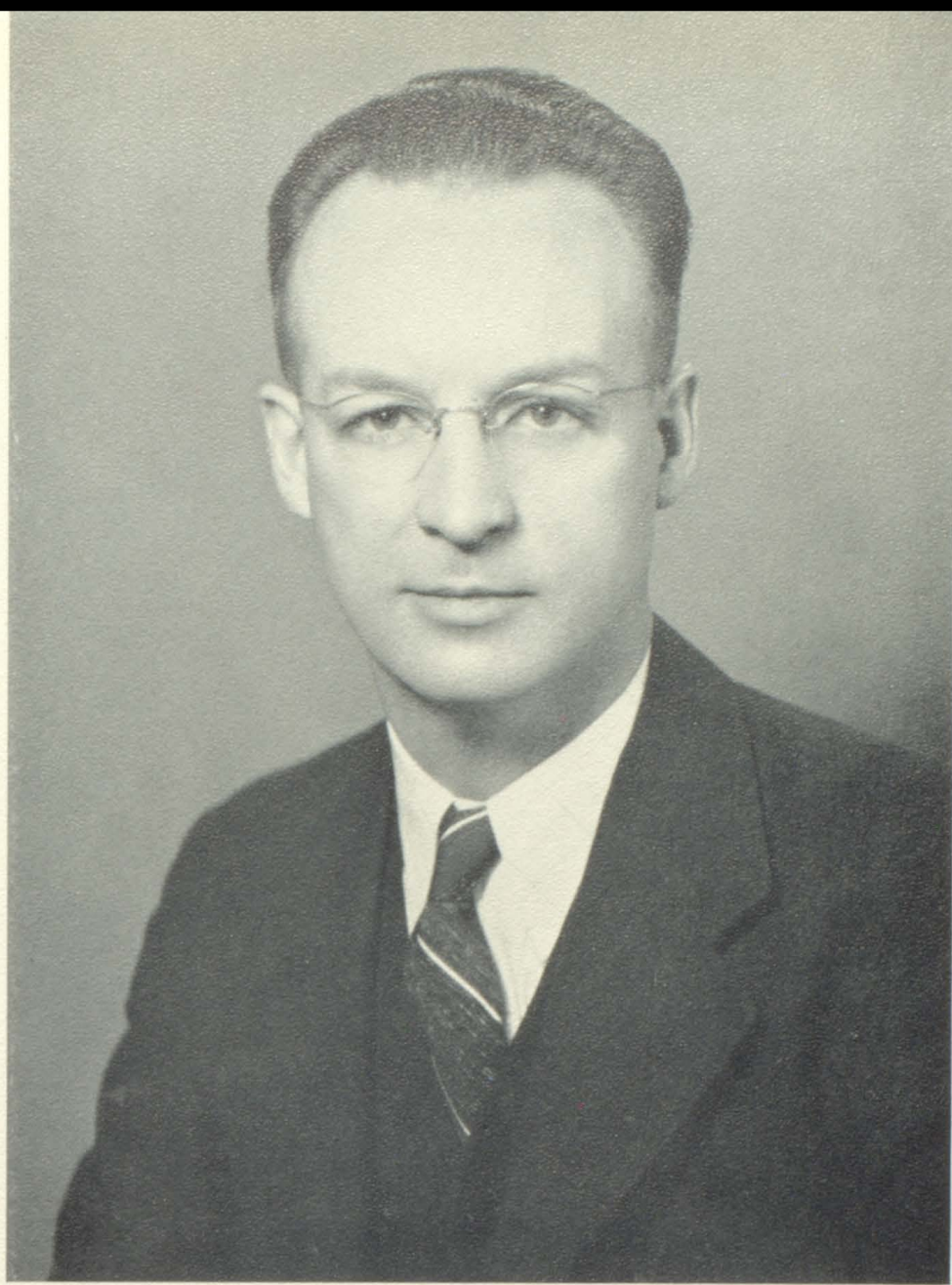


---

..... *Prologue*

The Cadmus Club sincerely hopes that you may enjoy many happy hours with your Cadmea. We have endeavored to present a publication which reflects the ideals and aspirations of Tennessee High School and those who make it possible.





# *Dedication*

A friend is one who by his very presence and influence inspires us to do our best and always look onward and upward. To such a friend, Mr. Everett L. Rowe, we dedicate the Cadmea for 1942.





# Contents

BOOK ONE . . . . . *The School*  
BOOK TWO . . . . . *Organizations*  
BOOK THREE . . . . . *Athletics*  
BOOK FOUR . . . . . *Features*





*Wayne Mc Donald*

*The School*



**John H. Arrants, A.B., M.S.**

*Superintendent*

High School Teacher and Principal,  
Bledsoe County High School

High School Teacher, South Pittsburg,  
Tennessee

County Superintendent, Meigs County,  
Tennessee

City Superintendent, South Pittsburg,  
Tennessee

Supervisor of Elementary Schools,  
State Department of Education

Teacher of Elementary Education,  
State Teachers College, Murfrees-  
boro, Tennessee

City Superintendent, Bristol, Tennessee



# ADMINISTRATION

**I. D. Eggers, B.S., M.S.**

*Principal*

Principal of Elementary Schools, John-  
son County, Tennessee

Teacher and Assistant Principal of  
Elkhorn District High School,  
Switchback, West Virginia

Teacher of Princeton High School,  
Princeton, West Virginia

Assistant Principal of Tennessee High  
School, Bristol, Tennessee

Principal of Tennessee High School,  
Bristol, Tennessee





# FACULTY



**BILLIE BAXTER**  
A.B.  
History

**EDWARD M. ESSER**  
A.B.  
Civics, Assistant Coach



**PEARL WALLACE COWAN**  
A.B.  
Dietician

**HALLIE HOUSTON CARSON**  
A.B. and A.B. in L.S.;  
M.A. in L.S.  
Librarian



**NANCY STERETT**  
A.B., M.A.  
Latin

**MILTON E. MILLER**  
A.B.  
Diversified Occupations

**EVERETT L. ROWE**  
B.S.  
Physics, Mathematics

**SARAH FORTUNE**  
B.S.  
Home Economics



**MARY RUCKER MARNEY**  
B.S.  
Mathematics, English,  
Latin

**MARGARET N. MCCLELLAN**  
A.B., M.A.  
English



**FRANCES E. COMBE**  
B.S.  
Physical Education  
Girls





# FACULTY

**MILDRED STITH**  
A.B.  
Bible

**DELLE D. SMITH**  
B.S., M.S.  
Biology and Chemistry



**MAURINE HAWKINS**  
A.B.  
Typing, Spanish

**RAYMOND S. PHILLIPPI**  
B.S.  
Industrial Arts



**TRAVIS C. SMITH**  
B.S.  
Commercial

**RUTH SYPHER**  
B.S., M.S.  
English, French



**GEORGE G. GILLINGHAM**  
A.B., M.S.  
History, Economics, Civics

**PAUL R. MACKEY**  
A.B., M.A.  
Coach, Phys. Ed., Boys



**NEIL H. WRIGHT**  
B.S.  
Band, Chorus

**JAMES R. HEIFNER**  
A.B., M.A.  
Mathematics

**ILLA LANE VAN HOOK**  
Secretary to Principal

Pictures Not Shown

**BESS E. BROCE**  
A.B.  
English

**REVELEY OWEN**  
A.B.  
Mathematics

**GENEVIEVE R. CALDWELL**  
B.S., M.A.  
English





# OUR DEAR TEACHERS



Faculty Feed Their Faces  
Juliet on the Balcony  
Miss Sypher and Jack Fight the Civil War

In the Cave of the Woozy  
The Oracle Speaks  
"Sadie" Hawkins



# SENIOR . . . . . . . CLASS

OFFICERS

FALL

DAVID PARRISH . . . . . President

WIMPY GRAY . . . . . Vice-President

MARY RUTH VANCE . . . . . Secretary

LON LILLEY . . . . . Treasurer

WARREN PHILLIPPI—  
Sergeant-at-Arms

SPRING

WIMPY GRAY . . . . . President

JACK WINDERS . . . . . Vice-President

FRANCES HARKLEROAD—  
Secretary

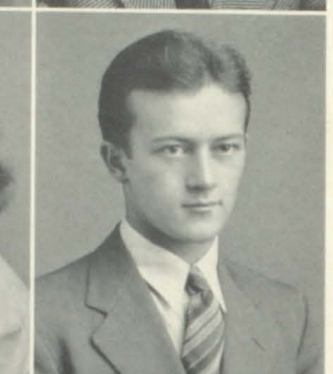
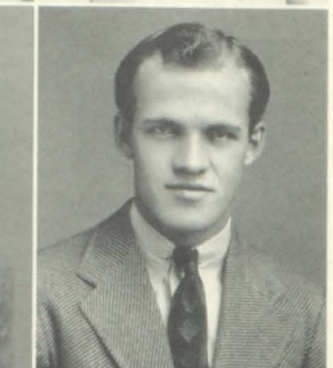
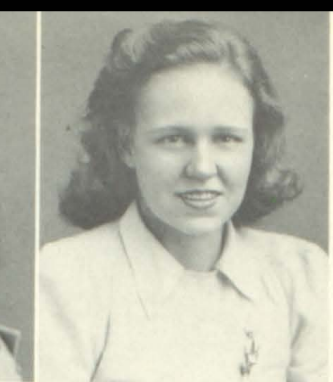
SAM LEE . . . . . Treasurer

WARREN PHILLIPPI—  
Sergeant-at-Arms





1942





# The Senior Class

## FIRST ROW, TOP TO BOTTOM

### ANDREA COREY ADAMS CLASSICAL

Glee Club '38-'40; Dramatics Club '38-'40; French Club '40-'42; Secretary '42; Alchemist Club '41-'42; Secretary '42; Home Economics Club '37-'38; Band Sponsor '41-'42; Girls' Hi-Y '40-'42; Sergeant-at-Arms '41; Treasurer All-Students' Council '41; Maroon and White '39-'42; Junior Play.

### MARTHA JANE ALLEN STATE

Home Economics Club '38-'39; Athletics Club '40-'42; Commercial Club '39-'40; Alchemist Club '40-'41.

### MARY ELLEN ARNOLD STATE

Home Economics Club '38-'39; Bible Club '40-'41.

### VIRGINIA LOUISE BABB COMMERCIAL

Speech Club '40-'41; Home Economics Club '39-'41; Glee Club '38-'42; Girls' Hi-Y '40-'42; President '42; Maroon and White '41-'42; Operetta '38-'42; Junior Red Cross '41-'42; Girl Scouts '39-'42.

### RICHARD WILLIAM BAYES STATE

### LOIS VIRGINIA BEATY STATE

Secretary Sub-Freshman Class '37; Home Economics Club '39-'40; Vice-President '39; Latin Club '40-'41; Dramatics Club '40-'41; Girls' Hi-Y '41-'42; Associate Editor The Cadmea '41-'42.

» «

## SECOND ROW, TOP TO BOTTOM

### EVELYN KATE BLEVINS STATE

French Club '40-'42; Commercial Club '40; Vice-President '40; Home Economics Club '38-'40; Maroon and White '40-'42; Girls' Hi-Y '41-'42.

### RUBY LEE BOLING STATE

Home Economics Club '39-'40.

### REBA NELL BOUTON GENERAL

Girls' Hi-Y '41-'42; Home Economics Club '39-'40; Glee Club '38-'39; Latin Club '39-'40; D. O. Club '40-'41.

### ELINOR RUTH BOWERY STATE

French Club '40-'41; Commercial Club President '41; Alchemist Club '41-'42; Queen Sophomore Class; Home Economics Club '38-'40; Maroon and White '41-'42; Girls' Hi-Y '41-'42.

### ROBERT HERSCHEL BOYD POLYTECHNIC

President Sub-Freshman Class '37; Vice-President Freshman Class '38; Band '40-'42; Glee Club '40-'42; Operetta '40-'42; Junior Civitan Club '39-'42; Secretary '40-'41; President '41-'42; Alchemist Club '40-'41; Treasurer '41; Junior Play '40; All-Students' Council '40-'42.

### JAMES ARTHUR BROCE STATE

Business Manager The Cadmea '41-'42; Transferred from Science Hill High School, Johnson City, Tennessee.

» «

## THIRD ROW, TOP TO BOTTOM

### LYNNIE OPAL BURNETTE STATE

Home Economics Club '38-'40; Bible Club '41-'42; Spanish Club '41.

### BRUCE ALTON CAMPBELL STATE

Football '39-'41; T Club '39-'42; Boys' Hi-Y '41-'42; Glee Club '38-'39.

### MARGARET JEAN CAMPBELL STATE

Girls' Hi-Y '41-'42; French Club '40-'41; Secretary '40-'41; Spanish Club '41; Treasurer '41; Home Economics Club '40-'41; Transferred from Plant High School, Tampa, Florida.

### WILMETH ELOISE CARRIER COMMERCIAL

Alchemist Club '41-'42; Home Economics Club '40-'41; Commercial Club '40-'41; Girls' Athletic Club '40-'42; T Club '39.

### MARION DANIEL COLVARD

### MARTHA LEE CORNS

» «

## FOURTH ROW, TOP TO BOTTOM

### MARY JO CRENSHAW COMMERCIAL

Girls' Hi-Y '41-'42; Home Economics Club '39-'40; Dramatics Club '41-'42; Maroon and White '41-'42; Alchemist Club '40-'41; Vice-President '41; Intramural Council '39-'41; Commercial Club '40-'41; Junior Red Cross Council '39-'40; Junior Class Play '41.

### CHARLES BRUCE CROCKETT STATE

### HERBERT JACKSON DAVIDSON GENERAL

T Club '41-'42; Civics Club '37-'38; Audubon Society '38-'39; French Club '39-'41; Spanish Club '41-'42; Band '39-'42; Orchestra '40-'41; Alchemist Club '39-'40.

### CHARLES EUGENE DONALDSON CLASSICAL

Football '38-'40; Basket-ball Junior Varsity '40-'42; Alchemist Club '40-'41; Maroon and White '41-'42; Spanish Club '41; Junior Class Play '41; The Cadmea '41-'42.

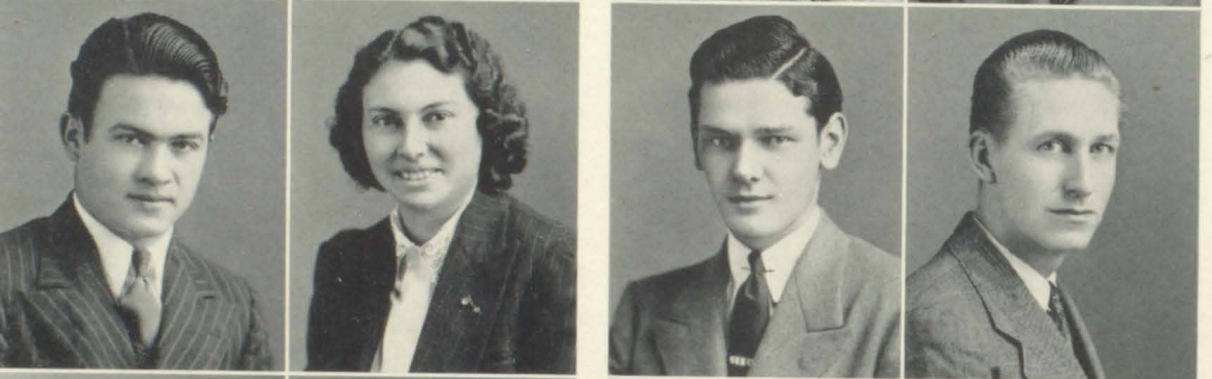
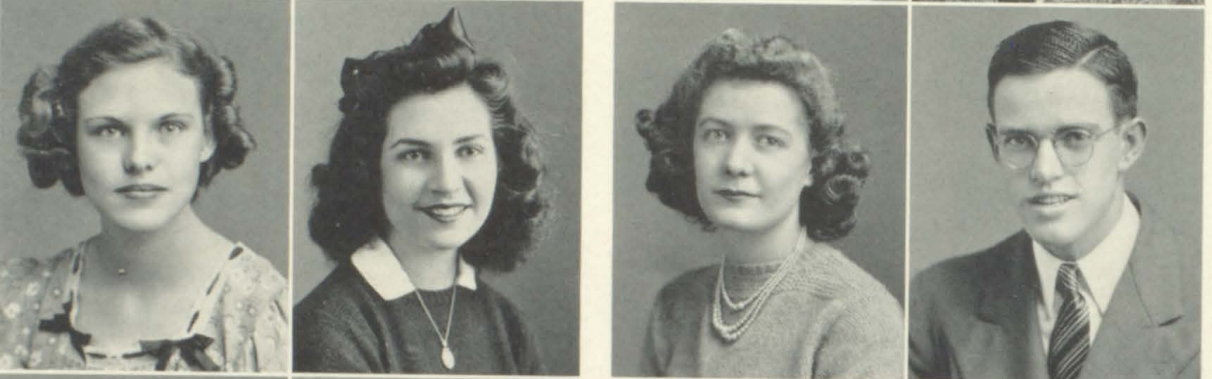
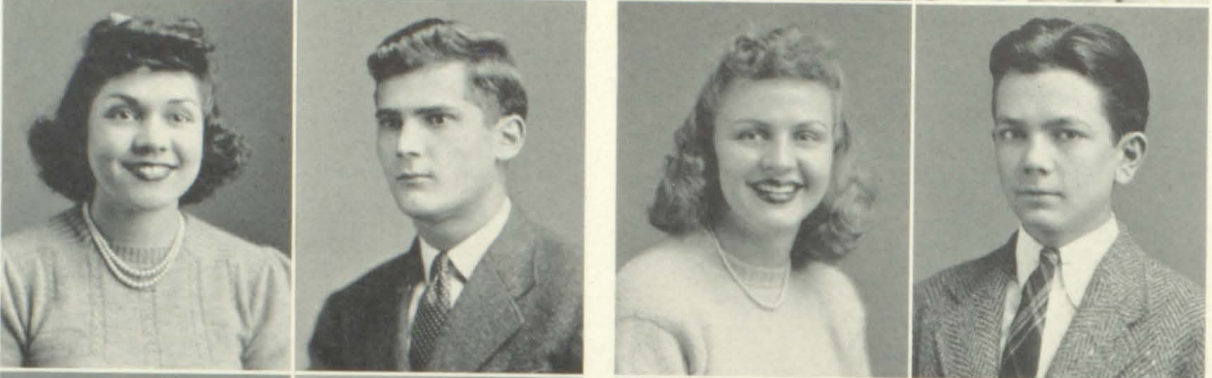
### NATHAN LEWIS DULANEY STATE

Maroon and White Sports Editor '40-'42; Commercial Club '40-'41; Junior Civitan Club '41-'42.

### LANDON CLARENCE FALLIN STATE

Transferred from Virginia High; Dramatics Club '41-'42; President '42.





1942



# The Senior Class

## FIRST ROW, TOP TO BOTTOM

### INA BELLE FRAZIER

#### COMMERCIAL

D. O. '41-'42; Commercial Club '40-'41; Girls' Athletic Club '40-'42.

### RUTH ELIZABETH GARRISON

#### STATE

Home Economics Club '41-'42.

### BEULAH MAY GLOVER

#### STATE

Speech Club '39-'42; Home Economics Club '39-'41; Commercial Club '39-'40; Glee Club '40-'41; Operetta '41; Girls' Hi-Y '41-'42.

### MACK ALFRED GODSEY

#### STATE

### WILFRED WYSER GRAY

#### POLYTECHNIC

T Club '40-'42; Alchemist Club '40-'41; President '41; Boys' Hi-Y '41-'42; Vice-President '41; Secretary '42; Vice-President Senior Class '41; President '42; Vice-President Student Council '42; Football '40-'42; Basketball '40-'42.

### SARAH FRANCES GRIMES

#### STATE

Glee Club '38-'39; Home Economics Club '38-'41; Girls' Hi-Y '41-'42; Treasurer '42; Girls' Athletic Club '40; Girl Scout.

» «

## SECOND ROW, TOP TO BOTTOM

### GEORGE WILBUR HAMMER, JR.

#### POLYTECHNIC

Dramatics Club '38-'39; Junior Civitan Club '39-'41; Secretary '41; Alchemist Club '40; Tennis '41; The Cadmea '41-'42.

### OSSIE DANIEL HAMRICK, JR.

#### STATE

Alchemist Club '40-'41; Dramatics Club '38-'40; Cheerleader '40-'41; Junior Civitan Club '38-'40; T Club '40-'41.

### FRANCES IRENE HARKLEROAD

#### CLASSICAL

French Club '40-'42; Secretary '40; Dramatics Club '39-'41; Treasurer '40; Maroon and White '40-'42; Exchange Editor '40-'41; Assistant Editor '41-'42; Junior Class Queen '40-'41; Home Economics Club '38-'39; All-Students' Council '42; Secretary Senior Class '42.

### LOUISE VIRGINIA HARRISON

#### COMMERCIAL

Home Economics Club '39-'41; Commercial Club '39-'40; Bible Club '40-'41; D. O. '41-'42.

### CHARLES ROY HARRIS

#### STATE

Audubon Society '38-'39; Alchemist Club '39-'40; Junior Civitan Club '40-'42; T Club '41-'42; Football Manager '41; Basket-ball '40-'42.

### MARTHA JANE HAVENS

#### STATE

Glee Club '41-'42; Maroon and White '41-'42; Alumni Editor '42; Dramatics Club '41; Alchemist Club '41-'42; President '42; Girls' Hi-Y '41-'42; Spanish Club '41-'42; Secretary '42; Red Cross Council '41-'42; Vice-President '41-'42; Home Economics Club '41-'42.

## THIRD ROW, TOP TO BOTTOM

### WILLIAM RHEA HILTON, JR.

#### POLYTECHNIC

Band '40-'41; Orchestra '40-'41; Chorus '42.

### MARTHA JEAN HULSEY

#### CLASSICAL

Vice-President Sub-Freshman Class; Queen Sub-Freshman Class; Queen Freshman Class; Home Economics Club '38-'40; French Club '40-'42; Vice-President '40; Treasurer '42; Glee Club '39-'42; Operetta '39-'42; Alchemist Club '41-'42; Secretary '41; Sweetheart Junior Civitan '41-'42; The Cadmea '41-'42.

### MARGARET LOUISE HUNT

#### STATE

Cadmus Club '41-'42; Girls' Hi-Y '41-'42; All-Students' Council '41-'42; Dramatics Club '40-'41; Glee Club '39-'41; T Club '39-'42; Home Economics Club '39-'40; Intramural Council '38-'40; Girls' Athletic Association '40-'42; Civics Club '38-'39; Audubon Club.

### STUART IVERSON INGRAM

#### STATE

President Freshman Class '38-'39; Cheerleader '38-'39; Football Manager '37-'39; Drum Major '39-'40; Alchemist Club '40-'42; Maroon and White '39-'41; Basket-ball '39; All-Students' Council '38-'39; Junior Civitan Club '41-'42; Red Cross Council '39-'40.

### BETTY KATE JANES

#### STATE

Home Economics Club '40-'41; Alchemist Club '40; French Club; Dramatics Club; Glee Club '40.

### HUGH LYLE JONES

#### STATE

Advertising Manager, The Cadmea '41-'42; Maroon and White '41; Band '40-'41; Junior Civitan Club '41-'42; Treasurer '42; Alchemist Club '41-'42; Civics Club '39.

» «

## FOURTH ROW, TOP TO BOTTOM

### KATHERINE HOPE KELLER

#### STATE

Home Economics Club '40-'41; Glee Club '40-'41; The Cadmea '41-'42; Girls' Hi-Y '41-'42; Alchemist Club '41-'42.

### JACK LYNTON KELSO

#### STATE

Transferred from Red Bluff, Calif.; Band '40-'42; Alchemist Club '40-'41; French Club '40-'42; President '41; Dramatics Club '41-'42; Secretary '42; Junior Civitan '41-'42; T Club '41-'42; Orchestra '40-'41.

### DOUGLAS COWAN LEACH

#### STATE

D. O. Club '40-'41; Audubon Club '38-'39.

### SAMUEL GRAHAM LEE

#### POLYTECHNIC

Commercial Club '39-'40; Dramatics Club '41; T Club '38-'42; Tennis '38-'41; Basket-ball '41-'42; Junior Civitan Club '41-'42; Vice-President '42.

### MARY ELIZABETH LESLIE

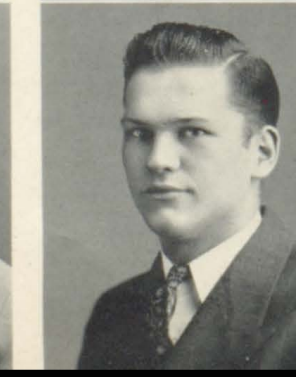
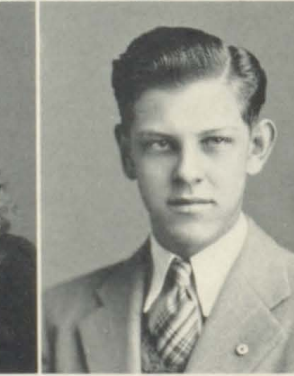
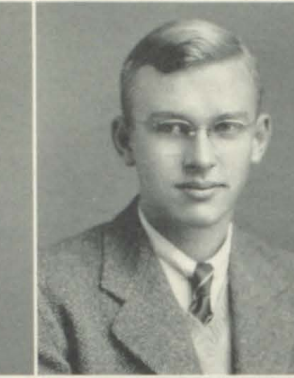
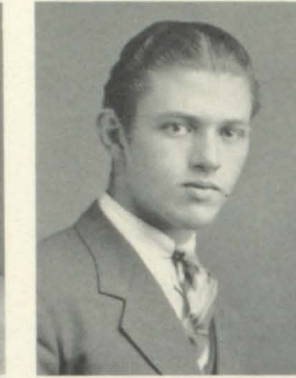
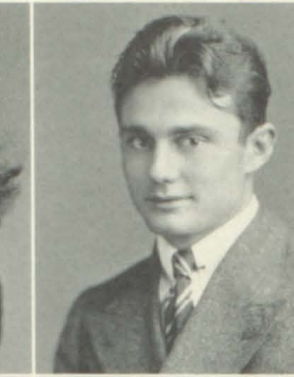
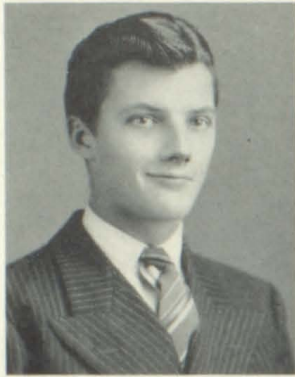
#### STATE

Home Economics Club '41; D. O. Club '40-'42.

### LON EDWARD LILLEY

#### POLYTECHNIC





1942



# The Senior Class

## FIRST ROW, TOP TO BOTTOM

**ALENE MARIE LOGAN**  
STATE

Glee Club '37; Home Economics Club '39-'41; President '40-'41; Secretary '39-'40; Secretary Junior Class '40-'41; Cheerleader '41-'42; Girls' Hi-Y '40-'42; Vice-President '41-'42; Sweetheart Junior Civitan Club '40-'41; All-Students' Council Secretary '41-'42; Treasurer '42; Junior Red Cross '39-'40; Vice-President.

**WILLIAM GEORGE LOUDY**  
STATE

**PEGGY VIRGINIA MARTIN**  
STATE

Glee Club '39-'42; Operetta '39-'42; Home Economics Club '38-'40; Dramatics Club '38-'39.

**ROBERT LEWIS MAUK**  
POLYTECHNIC

Civics Club '38-'39; Latin Club '39-'40; Astronomy Club '40-'41; Alchemist Club '41-'42; Glee Club '41-'42; Band '41-'42; Junior Civitan '41; Boys' Hi-Y '41-'42.

**RACHEL LOUISE MOORE**  
COMMERCIAL

Glee Club '41; Commercial Club '40; Home Economics Club '40; D. O. Club '41; Bible Club '41; President '41; Junior Orchestra '41.

**RUTH EVELYN MOTTERN**  
STATE

D. O. Club '40-'42; Audubon Club '39; Alchemist Club; Athletic Club '41; Intramural Council '41; T Club.

» «

## SECOND ROW, TOP TO BOTTOM

**GARNET FINLEY McCALL**  
STATE

Band '39-'42; Student Conductor '41-'42; Glee Club '40-'42; President '42; Operetta '40-'42; Spanish Club '41-'42; Junior Orchestra '41.

**CHARLES PRESTON McCARY**  
STATE

Civics Club '38-'39; D. O. Club '41-'42.

**ROBERT EMMETT McCLELLAN, JR.**  
STATE

Band '38-'40; Alchemist Club '41-'42; President '41; Sergeant-at-Arms '42; Junior Civitan Club '41-'42; Secretary '42; Varsity Basket-ball '41-'42; Civics Club '38-'39; Vice-President '39; Latin Club '40-'41; T Club '41-'42.

**WAYNE LOCKARD McDONALD**  
CLASSICAL

Secretary Freshman Class '39; Secretary Sophomore Class '40; Dramatics Club '39-'40; Secretary '40-'41; President '41; Junior Red Cross President '40-'41; Girls' Hi-Y '40-'42; Treasurer '41-'42; Maroon and White '40-'42; Circulation Manager '40-'41; Editor-in-Chief '41-'42.

**KARL WILKERSON MCGHEE**  
STATE

Band '39-'40; Junior Varsity Basket-ball '38-'39; Junior Orchestra '40-'41; Dramatics Club '42.

**CHARLES EMERSON NEAL**  
STATE

Basket-ball '39-'42; Football '39-'41; Track '39-'41; Civics Club '38; Boys' Hi-Y '41-'42; Secretary; President '42; Vice-President Junior Class; T Club '40-'42.

## THIRD ROW, TOP TO BOTTOM

**DORIS LOUISE NEAL**  
COMMERCIAL

Girls' Hi-Y '40-'42; President '41; Secretary '42; All-Students' Council '40-'41; Girls' Athletic Club '40-'42; Vice-President '42; Girl Scout '40-'42; Patrol Leader; Alchemist Club '41-'42; Vice-President '42; Commercial Club '41; T Club '40-'42; Junior Play '41; Home Economics Club; President '40.

**MYRA ANN NETHERLAND**  
COMMERCIAL

Home Economics Club '39-'41; Glee Club '40; D. O. Club '40-'41; Red Cross Council '38-'39; Intramural Council '38-'39.

**CLAYTON HENRY O'DELL**  
**FINDLEY PRESTON O'DELL**  
STATE

Civics Club '38; Speech Club '39; Manager Football '38-'39; Manager Basket-ball '38-'39.

**WYLMA ROSE OWEN**  
STATE

Home Economics Club '39-'42; Glee Club '40-'41; Cheerleader '41-'42; Dramatics Club '41-'42; Secretary '41; Girls' Hi-Y '41-'42; Girls' Athletic Club '41-'42; Operetta '40-'41; Junior Play '41; Red Cross Council '39-'40; Commercial Club '40.

**DAVID WALKER PARRISH, JR.**  
POLYTECHNIC

Football '37-'41; Basket-ball '39-'42; Captain '40-'41; President Senior Class '41; Boys' Hi-Y '39-'42; Sergeant-at-Arms '40-'41; Treasurer '42; French Club '39-'41; President '39; Alchemist Club '39-'40; President '39; Vice-President '40; T Club '39-'42; Kru Club '39-'40; All-Students' Council '39-'41.

» «

## FOURTH ROW, TOP TO BOTTOM

**PATSY VIRGINIA PATRICK**  
STATE

Alchemist Club '40; Home Economics Club '39-'41; Cheerleader '40-'41; Head Cheerleader '41-'42; Junior Red Cross '39-'42; Girls' Hi-Y '41-'42; Secretary All-Students' Council '42; T Club '40-'42.

**WARREN GEORGE PHILLIPPI**  
STATE

Kru Club; Boys' Hi-Y; Football '38-'39-'41; T Club; Secretary Sophomore Class '39; Sergeant-at-Arms Junior Class '41; Sergeant-at-Arms Senior Class '42; Captain Football '41.

**HUGH HOLMAN POST**  
STATE

Speech Club '38-'41; Band '38-'42; Glee Club '39-'41; T Club '39-'42; Junior Civitan Club '39-'42; Operetta '39-'42; Orchestra '39-'41.

**JOHN BRADLEY REEL**  
POLYTECHNIC

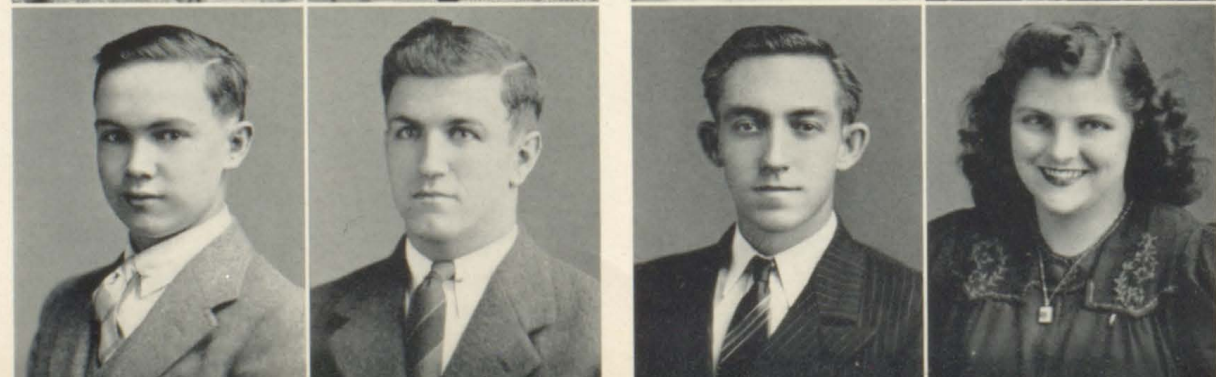
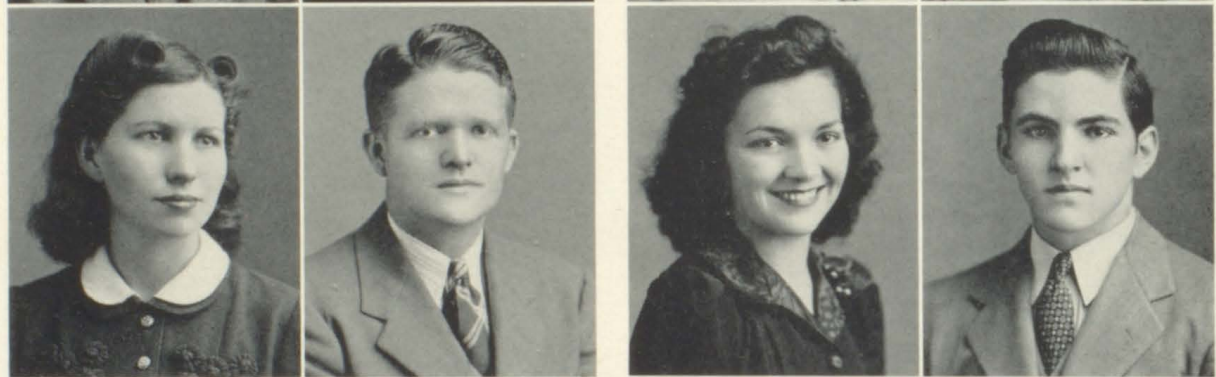
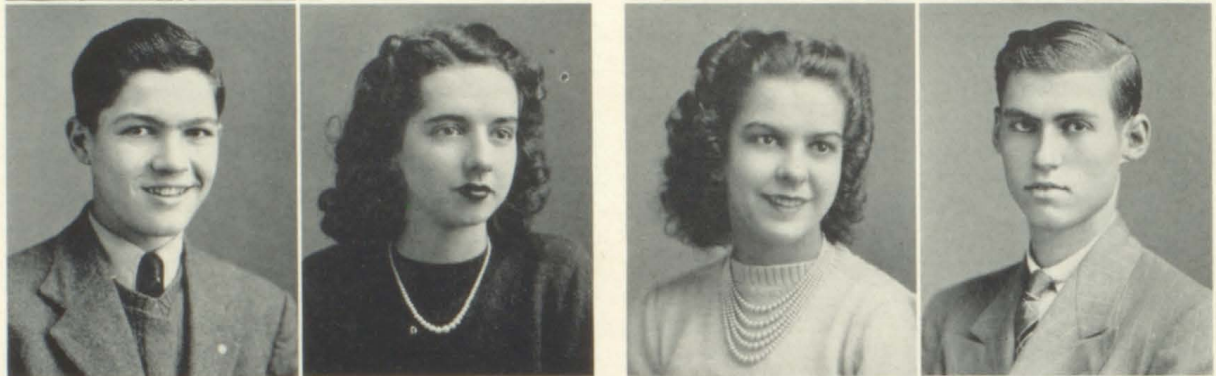
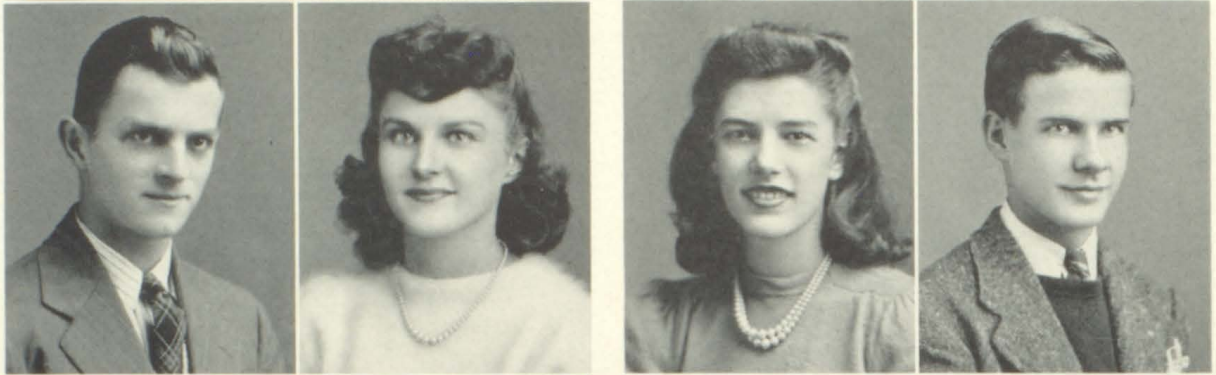
**ELMER HUBERT REXRODE**  
STATE

**CONLEY STERMAN RICHARDS**  
STATE

Civics Club '38-'39; Audubon Club '38-'39; Alchemist Club '40.



1942





# The Senior Class

## FIRST ROW, TOP TO BOTTOM

**BILL RINGLEY**  
COMMERCIAL

D. O. Club '40-'42; Junior Play '41.

**JACK RINGLEY**  
COMMERCIAL

D. O. Club '40-'42; Junior Play '41.

**HERBERT WILLIAM RIORDAN**  
POLYTECHNIC

Junior Civitan Club '39-'40; All-Students' Council '41-'42; Editor-in-Chief, The Cadmea '41-'42.

**MARGARET LOUISE ROYSTON**  
STATE

Home Economics Club '38-'40; Chorus '41-'42; Audubon Club '39-'40; Alchemist Club '40.

**BENJAMIN FRANKLIN RUTHERFORD, JR.**  
STATE

Basket-ball '38-'40; D. O. Club '40-'42; Boys' Hi-Y '40-'42; Sergeant-at-Arms '41.

**WILLIAM EDWARD RUTHERFORD**  
STATE

Junior Civitan Club '41-'42; Dramatics Club '41-'42; Treasurer '41; Vice-President '42.

» «

## SECOND ROW, TOP TO BOTTOM

**FRANCES LOUISE SHANKEL**  
STATE

French Club '39-'42; Home Economics Club '38-'39.

**BILLIE JO SHERWOOD**  
STATE

Glee Club '39; Junior Red Cross '39-'42; Home Economics Club '39-'41; Secretary '41; Maroon and White '41-'42; Alumni Editor '41; Exchange Editor and Circulation Manager '42; Secretary Junior Class '40; Girls' Hi-Y '40-'42; Secretary '41; Cheerleader '41-'42; T Club '41-'42.

**ALICE ANITA SMITH**  
STATE

French Club '40-'42; Commercial Club '40; Vice-President '41; Alchemist Club '41-'42; Home Economics Club '38-'39; Maroon and White '41-'42; Dramatics Club '41.

**CLYDE RANDOLPH SMITH**  
COMMERCIAL

D. O. Club; Football '39-'40.

**JULES WALKER SMYTHE**  
STATE

Basket-ball '39-'41; Tennis '39-'42; The Cadmea '39-'40; Dramatics Club '41; President Sub-Freshman Class; President Junior Class; Cheerleader '41; Kru Club; T Club.

**DON BUTLER STICKLEY**  
STATE

President Sub-Freshman Class '37; President Freshman Class '38; President Sophomore Class '39; Boys' Hi-Y '41-'42; President Student Council '41; Football '38-'41; Basket-ball '38-'39; Junior Play '41.

## THIRD ROW, TOP TO BOTTOM

**CLAUDE DONALD SWINEY**  
STATE

**VIRGINIA LEE TEMPLETON**  
CLASSICAL

Orchestra '39-'41; Latin Club '40-'42; Vice-President '42; Home Economics Club '40-'41; Girls' Athletic Club '41-'42; Alchemist Club '41-'42.

**GENEVIEVE THOMAS**  
STATE

**MARY RUTH VANCE**  
COMMERCIAL

Home Economics Club '40; D. O. Club '40; Girls' Hi-Y '40-'42; Secretary Junior Class '40; Treasurer Junior Class '41; Secretary Senior Class '41.

**SARA PEARL VANCE**  
COMMERCIAL

Junior Red Cross '39-'41; Junior Play '41; Girls' Hi-Y '40-'42; Vice-President '42; Alchemist Club '40; Commercial Club '40-'41; Secretary and Treasurer '40; Home Economics Club '42; Glee Club '39-'40.

**JOSEPH INGLE WARREN**  
STATE

Audubon Club '38; Junior Class Orchestra '40; D. O. Club '40-'41.

» «

## FOURTH ROW, TOP TO BOTTOM

**MARTHA LOUISE WARREN**  
COMMERCIAL

Commercial Club '39-'40; Bible Club '39-'40; Home Economics Club '40; Alchemist Club '41-'42; Glee Club '40-'42.

**JOHN MICHAEL WHITE, JR.**  
STATE

Civics Club '38-'39; Junior Civitan Club '41-'42.

**JAMES TAYLOR WILLIAMS**  
STATE

**JACK ARTHUR WINDERS**  
STATE

Transferred from High Point, N. C., '40; Football '40-'41; Basket-ball '41; Junior Civitan Club '40-'42; Vice-President '41; President '42; French Club '40-'42; Alchemist Club '40-'41; Secretary Junior Class '41.

**BILLIE WININGER**  
STATE

Glee Club '41; Spanish Club '41; Home Economics Club '40-'41; Alchemist Club '41-'42; Civics Club '38.

**AUDREY MAE WOLFORD**  
COMMERCIAL

Transferred from Holston Valley High School '41.



# *Last Will and Testament*

We, the Seniors of Tennessee High School, City of Bristol, County of Sullivan, State of Tennessee, being of sound mind and good health, and realizing the nearness of our departure, do hereby declare this our last will and testament.

FIRST: To Mr. Arrants, Mr. Eggers, and members of the faculty, we leave our sincere appreciation for their untiring efforts in our behalf and their unfailing interest in our every endeavor.

SECOND: To our advisers, Miss Baxter, Miss Owen, Miss Sypher, and Mr. Gillingham, we leave our deepest gratitude for their faithful toil and enduring patience which have made our Senior year such a happy one.

THIRD: To the Freshmen and Sophomores, our memories of four glorious years at Tennessee High, hoping they will uphold the traditions we have held so high.

FOURTH: To the Juniors, our personal bequeaths:

I, Andrea Adams, bequeath to Wilma Comerford my ability to hold two "Jacks" in one hand. I, Martha Jean Hulsey, will my ability to flirt to Mildred Terry, who is no "slouch" herself. We, Robert Boyd, Hugh Post, and Garnet McCall, will our musical talents to Charles Francisco, Jack Brummit, and George Kuhnert. I, Betty Janes, leave to Josephine DeFriece my various lipsticks and secret art of make-up. I, Mary Ruth Vance, leave my beautiful hair to Jane Burrow. We, Bill and Jack Ringley, leave a portion of our "brotherly love" to Bill and Jack Faucette. I, Ted Stauffer, leave my bashful disposition to Lawrence Carrier, hoping to make the school just a little quieter. We, Patsy Patrick and Wylma Owen, leave some of our "Pep" and school spirit to Emma Hamrick, Betty Campbell, and Leone Fleenor. We, Doris Neal, Louise Hunt, Myra Netherland, Stella Frye, Virginia Templeton, and Ruth Mottern, being the great athletes of the Senior Class, leave our ability to Betty Boyd, Mary Lee Lynch, and Gladys Coffey. We, Wayne McDonald and "Jim" Broce, leave our masterminds to Eula Jean McClellan, Doris Mauk, and Tom Driver. I, Clyde Smith, leave my ability to skip classes to Jack Harris. I, "Buddy" McGhee, will my ability to argue to any Junior who wants to get into trouble. We, "Jake" Phillippi, Bruce Campbell, "Wimpy" Gray, and Jack Winders, leave to "Ott" Wyatt, Robert Leslie, John Ford, and Herbert Roberts, the ability to play football. We, Virginia Babb, Elinor Bowery, and Evelyn Blevins, leave our vast knowledge of the Commercial subjects to any Junior who wants to be a good secretary. I, Don Stickley, leave my school offices to Bill Tom Wayland. We, Alene Logan and Billie Jo Sherwood, do hereby bequeath our perfect friendship to Jane Millard and Jean Buckles. I, Robert Emmett McClellan, Jr., leave my "Blitzkrieg bob" to Billy Jo Lane. I, Hope Keller, leave my beautiful complexion to Robertine Boaz. I, Martha Havens, leave my sweet disposition to Rosemary Jones and Aileen Arnold. We, "Charlie" Harris and Jules Smythe, leave our superb ability to play basket-ball to "Buck" Phipps and Arthur Riddle. We, B. F. Rutherford, Preston O'Dell, and Charles Crockett, leave our studious natures which land us in detention hall to Dan MacMillan, "Charlie" Baker, and Elmer Vires. I, Charles Neal, leave my ability to "slay 'em" to Aubrey Meadows. We, John Furge and Eugene Donaldson, leave our quiet and peaceful manner in study hall to Chalmer Basham, and Bobby Frazier. I, Sam Lee, will my ability to make the nine-ball to any



## SENIOR CLASS POEM

### *The Challenge*

Behind us lie twelve years of toil;  
Ahead lie many more;  
We face a world that's in turmoil—  
A chaotic world of war.

The BLUE AND GOLD must pull as one—  
As one through thick and thin,  
And ere the battle clouds are done  
We'll WORK AND WAIT AND WIN.

—Billy Hilton  
Bobby Nicar

### *Last Will and Testament, Continued*

Junior who wants to make some easy money. I, Lyle Jones, willingly leave my heart to Aleene O'Dell. I, Mary Jo Crenshaw, leave my flaming tresses to Sue Reece. We, Landon Fallin and Herbert Dalton, leave part of our repertoire of "hill-billy" songs to any Junior with a good nasal voice. I, Jack Kelso, bequeath all my excess height to Dick Easley and Charles Minor. I, Stuart Ingram, being the "windy" member of the class, leave a portion of my wind to all Juniors, feeling that each one will get an abundant share. We, Jean Campbell and Frances Harkleroad, will our way with football players to Billie Hamm, Gloria Bachman, and Julia Reed. I, Bill Rutherford, leave my title of "speed-demon" to any courageous Junior. We, Reba Bouton, Peggy Martin, Edna Stophel, and Audrey Wolford, being the quietest girls in the class, leave some of this quietness to Doris Calhoun, Martha Bane, Pearl Smith, and Estaleen Cole. I, Richard Bayes, leave my bicycle to any Junior who is tired of walking to school. I, J. T. Williams, leave my taxi for hauling D. O. students to any industrious Junior. I, Billie Winger, leave my ability to write so that nobody can read it to any Junior who wants to fool the teacher. We, "Bobby" Nicar and Bill Hilton, bequeath our poetic talents to any Junior who wants to be famous.

LOIS BEATY  
Legator of Senior Class

#### Witnesses:

DAVID PARRISH, Fall President  
WILFRED GRAY, Spring President  
MISS RUTH SYPHER, Adviser  
MISS BILLIE BAXTER, Adviser  
MISS REVELY OWEN, Adviser  
MR. GEORGE GILLINGHAM, Adviser





## OUTSTANDING SENIORS

**GARNET MCCALL**  
Student Band Director

**HERBERT RIORDAN**  
Editor Cadmea

**LOUISE HUNT**  
Girls' Athletics

**DAVE PARRISH**  
Senior Class President

**JIM BROCE**  
Outstanding Scholar

**LOIS BEATY**  
Outstanding Scholar

**ROBERT BOYD**  
Most Talented Musician

**"WIMPY" GRAY**  
Outstanding Athlete

**DON STICKLEY**  
President Student Body

**ANDREA ADAMS**  
Cutest Girl

**ALENE LOGAN**  
Senior Queen

**CHARLES NEAL**  
President Boys' Hi-Y





# JUNIOR . . . . . . . CLASS

## OFFICERS

### FALL

BILL WAYLAND \_\_\_\_\_ President  
JAMES ANDERSON—  
Vice-President  
ROSEMARY JONES \_\_\_\_\_ Secretary  
GEORGE OBENSHAIN \_\_\_\_\_ Treasurer  
LAWRENCE CARRIER—  
Sergeant-at-Arms

### SPRING

W. K. LAMBERT \_\_\_\_\_ President  
DICK EASLEY \_\_\_\_\_ Vice-President  
DORIS MAUK \_\_\_\_\_ Secretary  
EMMA HAMRICK \_\_\_\_\_ Treasurer  
JACK AND BILL FAUCETTE—  
Sergeants-at-Arms







Row 1: ROBERT ALLEY, JAMES ANDERSON, AILEEN ARNOLD, DOROTHY ARNOLD, GLORIA BACHMAN.

Row 2: CHARLES BAKER, MARTHA BANE, CHALMER BASHAM, ROBERTINE BOAZ, BETTY BOYD.

Row 3: JACK BRUMMIT, JEAN BUCKLES, JANE BURROW, DORIS CALHOUN, BETTY CAMPBELL.

Row 4: THEODORE CARDWELL, AGNES CARTER, BILLIE CHILDRESS, GLADYS COFFEY, ESTALEEN COLE.

*The Class of Forty-Three . . .*



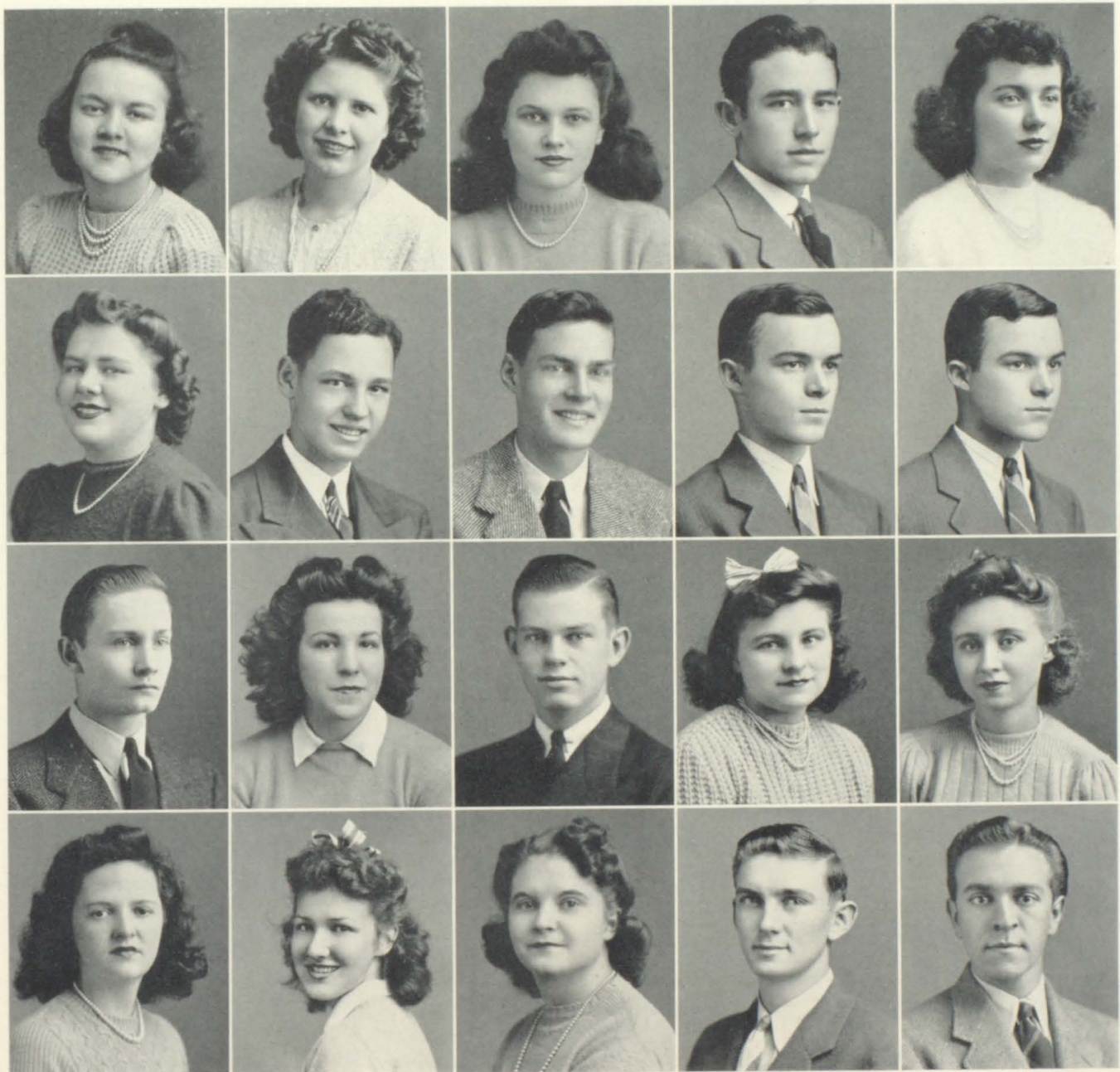
# The Class of Forty-Three . . .

Row 1: MADGE COLVARD, MARIE COMBS, WILMA COMERFORD, RALPH CONNER, JOSEPHINE DEFRIECE.

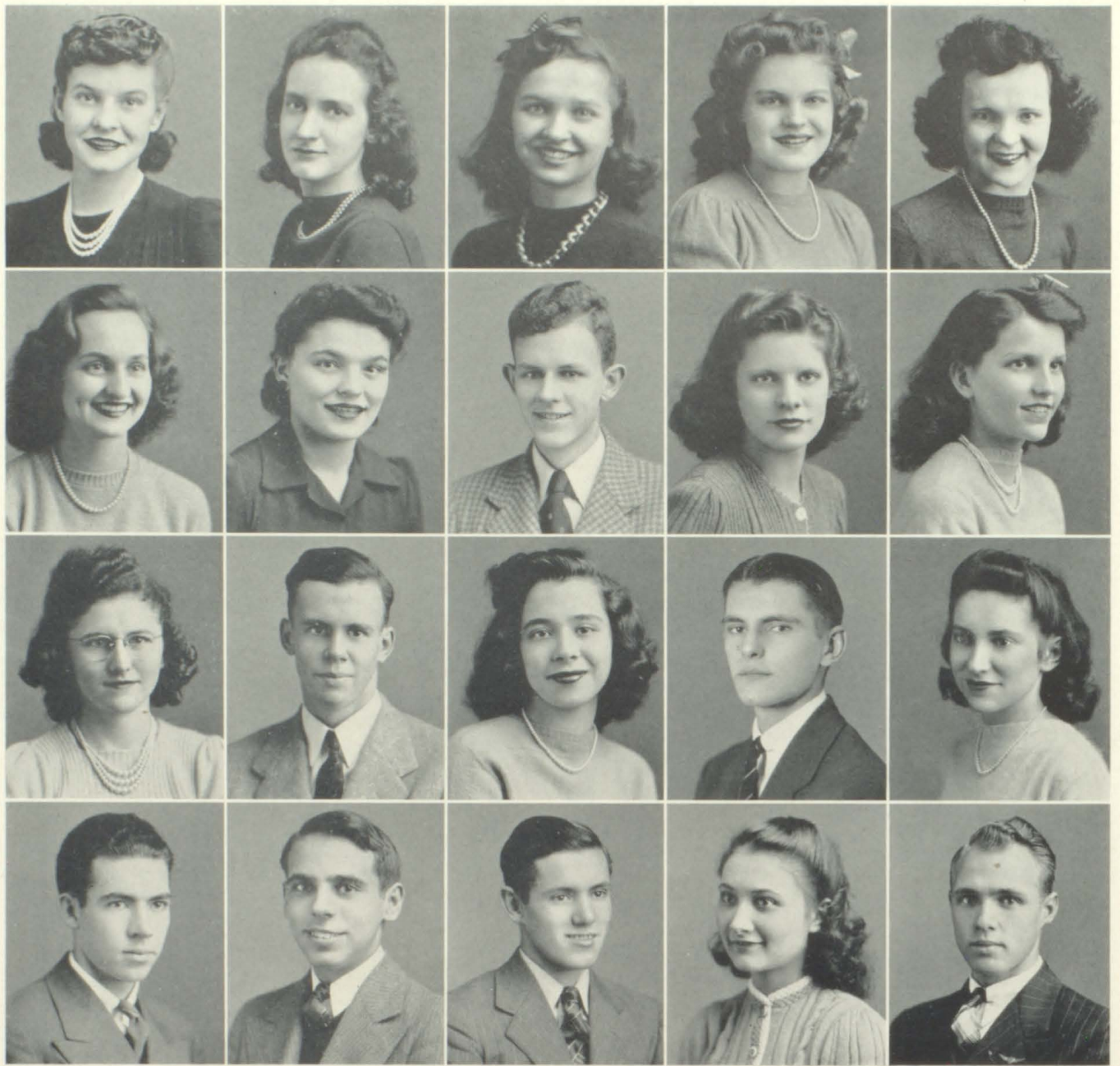
Row 2: IRIS DENTON, TOM DRIVER, DICK EASLEY, BILL FAUCETTE, JACK FAUCETTE.

Row 3: BOBBY FERGUSON, LEONE FLEENOR, CHARLES FRANCISCO, COLEEN FRAZIER, ARDELLA FRYE.

Row 4: HELEN GRAY, BILLIE HAMM, EMMA HAMRICK, TED HAYES, ALONZO HENRY.







Row 1: HELEN HOGAN, MARION HOGSETT, MARCELLA HORNE, ROSEMARY JONES, FRANCES KEESSE.

Row 2: DOROTHY KILGORE, EDITH KOONTZ, GEORGE KUHNERT, EVELYN LOGGANS, RUTH LOXLEY.

Row 3: MARY LEE LYNCH, DAN MACMILLAN, DORIS MAUK, AUBREY MEADOWS, JANE MILLARD.

Row 4: BURLIE MILLER, CHARLES MINOR, ROBERT MOTTERN, EULA JEAN MCCLELLAN, WALLACE MCCRAY.

*The Class of Forty-Three . . .*



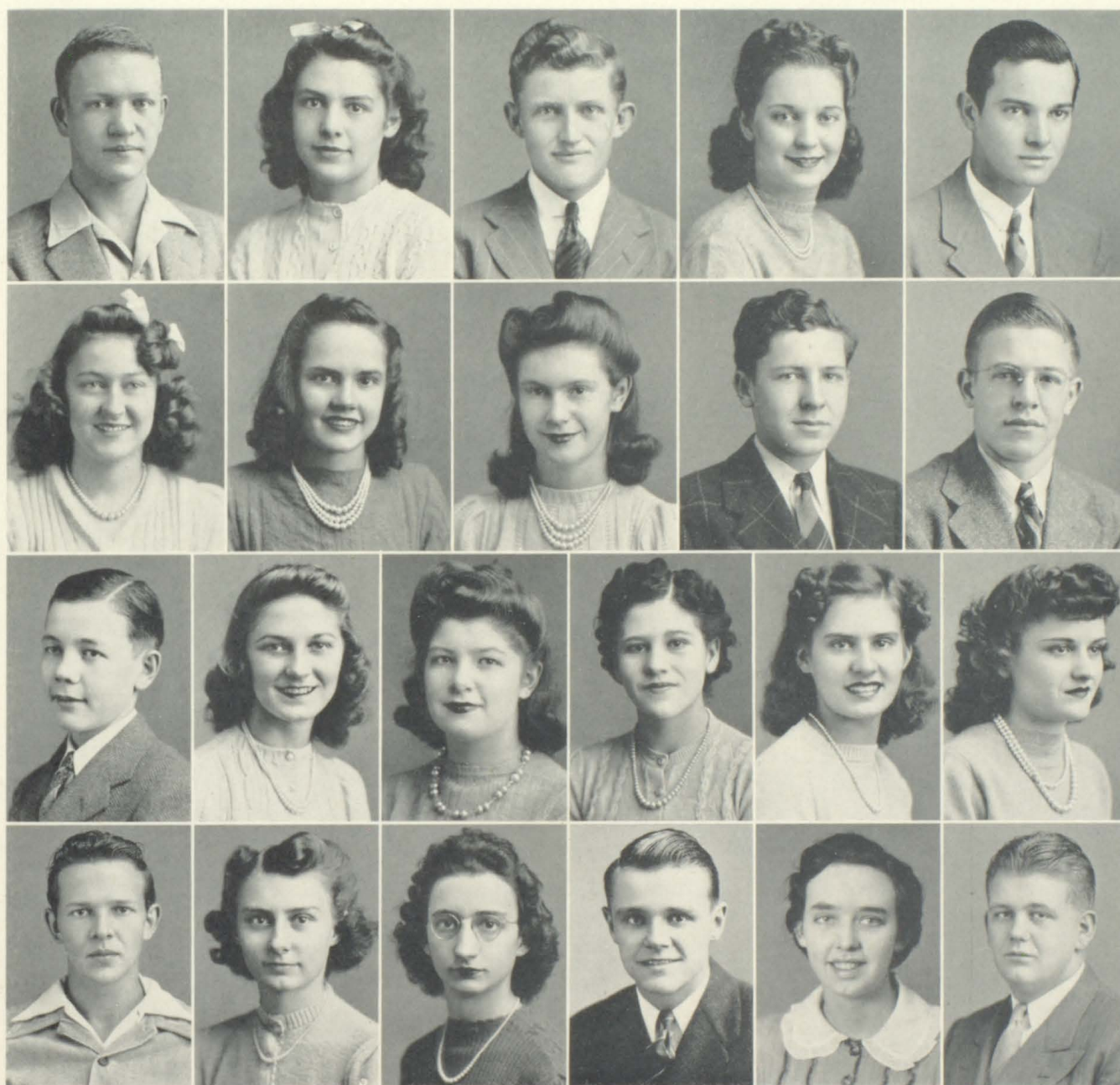
# The Class of Forty-Three . . .

Row 1: GEORGE OBENSHAIN, ALEENE O'DELL, CHARLES OLSON, EVELYN PETERS, MAC PHIPPS.

Row 2: ELIZABETH PYLE, THELMA RATHER, SUE REECE, ARTHUR RIDDLE, HERBERT ROBERTS.

Row 3: JERRY RUCKER, LOU SALLEY, CAROLYN SENTER, BERNICE SMITH, PEARL SMITH, MILDRED TERRY.

Row 4: ELMER VIRES, ALICE WARREN, ALMA WATSON, BILL WAYLAND, GRACE WINEBARGER, CHARLES WYATT.







### OFFICERS

#### FALL

JOHN ADAMS.....President  
 DOROTHY BULLOCK.....Vice-President  
 ALLEN MUMPOWER.....Treasurer  
 HAL LITTLEFORD.....Sergeant-at-Arms

#### SPRING

HAL LITTLEFORD.....President  
 HERBERT SEAVEY.....Vice-President  
 BETTY RUTH REEL.....Treasurer  
 ROLAND BLEVINS.....Sergeant-at-Arms

**Row 1:** J. GRUBBS, C. SLAGLE, H. LEONARD, E. FURSE, P. NICKELS, F. LANE, R. WOODWARD, O. TURNER, R. CORRELL, M. KESNER, C. DALTON, F. PROFFITT, M. FISHER, J. KUMMER, G. BARR.

**Row 2:** MR. PHILIPPI, F. BIRDWELL, L. SPAULDING, J. ROCK, B. DALTON, M. COMBS, E. VAN HOOK, L. DAVIDSON, V. FAIDLEY, H. KELLY, H. BROWN, D. BULLOCK, M. F. MCCROSKY.

**Row 3:** MRS. CALDWELL, J. DIX, B. HASHBARGER, MISS SMITH, B. BURROW, C. CRAWFORD, M. A. FLETCHER, L. PATTON, N. STICKLEY, B. FRANCISCO, D. CARMODY, R. REXRODE, A. FINKLE, E. GALLIHER.

**Row 4:** C. BARNES, E. AUSTIN, J. PHELPS, M. CALHOUN, M. O'DELL, A. MCKEE, B. REEL, B. PHILLIPS, F. HICKS, B. BASHAM, H. MUNDIE, C. FLEENOR, S. C. FAUCETTE, M. J. POWERS, M. CARTER, G. MOORE, J. DROKE, N. COLLIS, L. LONG, P. HILT.

**Row 5:** MR. HEIFNER, M. FAIN, E. LANE, R. BLEVINS, J. ADAMS, E. MAUK, A. MUMPOWER, C. SCOTT, B. J. COONTZ, H. R. BIBEE, S. STEPHENSON, J. STONE, C. HILTON, H. LITTLEFORD, L. BROYLES, R. BLEVINS, N. BRAE, C. DENTON, N. HALL, O. THOMAS, J. BEIDLEMAN, B. OVERBAY, C. MOORE, M. BRAY, J. WARREN, E. McREYNOLDS.

*The Class of Forty-Four...*



# The Class of Forty-Five . . .

## OFFICERS

### FALL

JIMMY COWAN \_\_\_\_\_ President  
 LAURA ANN KING \_\_\_\_\_ Vice-President  
 MARY GRAHAM HOOKS \_\_\_\_\_ Secretary  
 ALICE CRENSHAW \_\_\_\_\_ Treasurer  
 WAYNE BUTTERWORTH \_\_\_\_\_ Sergeant-at-Arms

### SPRING

CATHERINE BARKER \_\_\_\_\_ President  
 JIMMY COWAN \_\_\_\_\_ Vice-President  
 ALICE CRENSHAW \_\_\_\_\_ Secretary  
 FRANCES EGGERS \_\_\_\_\_ Treasurer  
 BILL RILEY \_\_\_\_\_ Sergeant-at-Arms

**Row 1:** M. BARKER, B. MORRIS, J. A. STONE, B. L. CAMPBELL, S. IZZEDIN, V. OBENSHAIN, M. G. HOOKS, J. COWAN, W. BUTTERWORTH, M. COMBS, D. OWEN, V. EVANS, C. BARKER, M. L. HAMMER, P. SEXTON.

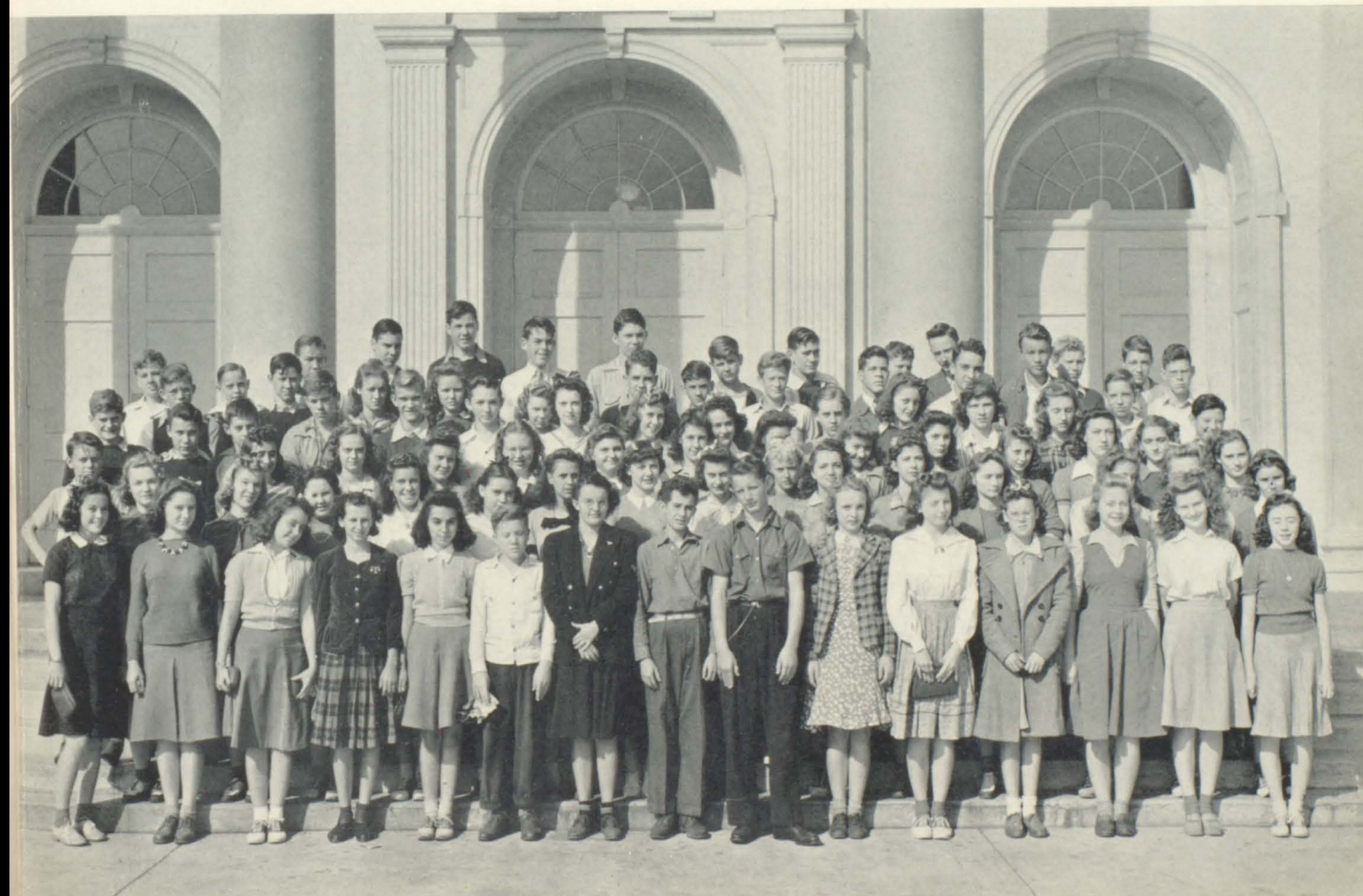
**Row 2:** F. EGGERS, P. EGGERS, V. WOLFE, J. SPARGUR, B. WEBB, J. BUSH, O. SALYER, D. WOOD, E. DAVIS, E. A. REPASS, E. BEATY, J. FERGUSON, H. GRAY, P. BEWLEY, A. FAUCETTE.

**Row 3:** T. PUCKETT, V. VANCE, E. PHILLIPS, L. M. PHILLIPS, R. WALLS, J. MORPHEW, B. SHOEMAKER, L. PERRY, S. OVERBAY, M. K. SULT, D. CARTER, J. HAGY, E. HULL, F. WATSON.

**Row 4:** F. WAMPLER, J. CROCKETT, J. GODSEY, B. REYNOLDS, M. FURROW, C. WINDERS, N. RINGLEY, M. L. HAYNES, D. M. SLAGLE, M. J. GROW, M. LESLIE, S. LEGET, J. CRUMLEY, J. C. HALL, J. RAINERO.

**Row 5:** H. PETERS, F. BOYD, B. JONES, K. WILLIAMS, M. SAMS, F. BARR, M. S. CUNNINGHAM, B. DONALDSON, J. HAMRICK, E. POWERS, J. SHINLEVER, B. SHEETS, J. BYRD, B. PROCTOR.

**Row 6:** D. CRENSHAW, K. ALLEN, B. JOHNSON, W. ANDERSON, F. LESLIE, J. RICHARDSON, A. GARRISON, B. KING, H. KING, H. SMITH, H. HARR.





## *Alma Mater*

May love as bright as sunshine,  
And loyalty within us bide,  
Our feet be on the paths of truth,  
Where thou dost ever guide.  
Oh, may we bravely fight each battle,  
Be kind in victory,  
And though the tide's against us  
Still sing of Tennessee  
Oh, Tennessee, our Alma Mater,  
May your banner lead,  
Oh, may we ever offer loyalty  
In word and thought and deed.  
We'll strive to keep thy colors  
All clean and tarnish-free,  
And may our gift be love and honor  
To thee, O Tennessee

—Haskell Owen





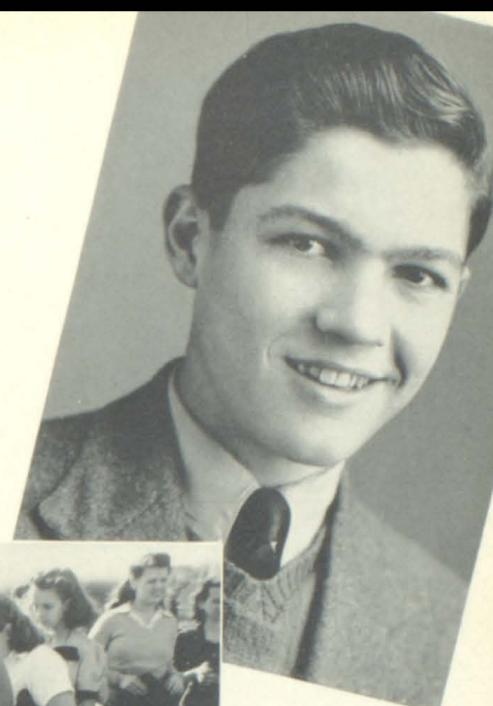
*Patsy Patrick*

# *Organizations*



# THE CADMUS CLUB

Lest in time our memories may falter and the thoughts of these days at Tennessee High should become dim, the Cadmus Club has endeavored to publish an annual by which we can remember life as we have experienced it at Tennessee High.



EDITOR  
HERBERT RIORDAN



CADMUS CLUB COLLECTS MONEY FOR PICTURES

- Row 1:** MR. GILLINGHAM, Sponsor; LOIS BEATY, Associate Editor; JIM BROCE, Business Manager; BILLIE CHILDRESS, LYLE JONES, Advertising Manager.
- Row 2:** ALENE LOGAN, BILL HAMMER, HOPE KELLER, LOUISE HUNT, JIMMY KUMMER, MARTHA JEAN HULSEY.
- Row 3:** EMMA HAMRICK, FRANCES PROFFITT, EUGENE DONALDSON, EVAMAY FURSE, ALEENE O'DELL, DOROTHY CARMODY.



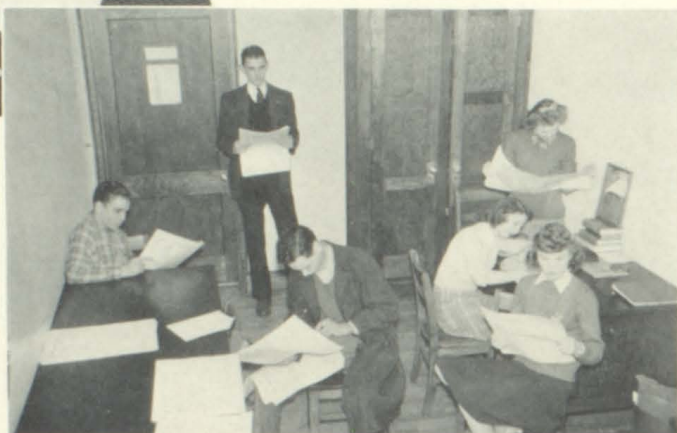




EDITOR  
WAYNE McDONALD

# MAROON AND WHITE

The Maroon and White gives us a monthly account of what goes on in our school. It is a member of the National Quill and Scroll and publishes a first-rate school paper. It is financed through the sale of student activity tickets, and through the Book Store.



MAROON & WHITE DISTRIBUTES PAPERS

- Row 1: FAUCETTE, POST, HARKLEROAD, McDONALD, MEADOWS, FAUCETTE, DONALDSON, GRUBBS.
- Row 2: DULANEY, ADAMS, SHERWOOD, HAVENS, BOAZ, HAMM, DRIVER.
- Row 3: BURROW, BLEVINS, BUCKLES, COMERFORD, BACHMAN, MILLARD, BABB.
- Row 4: MISS BROCE, Sponscr; CRENSHAW, BOWERY, SMITH.





Row 1: MR. EGGERS, ADAMS, LOGAN, STICKLEY, WAYLAND.

Row 2: BOYD, COFFEY, COMERFORD, HUNT, NEAL, VANCE, McDONALD, PATRICK.

Row 3: CHILDRESS, GRAY, HENRY, KELSO.

Row 4: McCALL, BOYD, DRIVER, MEADOWS, PHILLIPPI, PARRISH, RIORDAN.

## STUDENT COUNCIL

### Fall

DON STICKLEY...President

BILL WAYLAND...  
Vice-President

ALENE LOGAN...Secretary

ANDREA ADAMS...Treasurer

### Spring

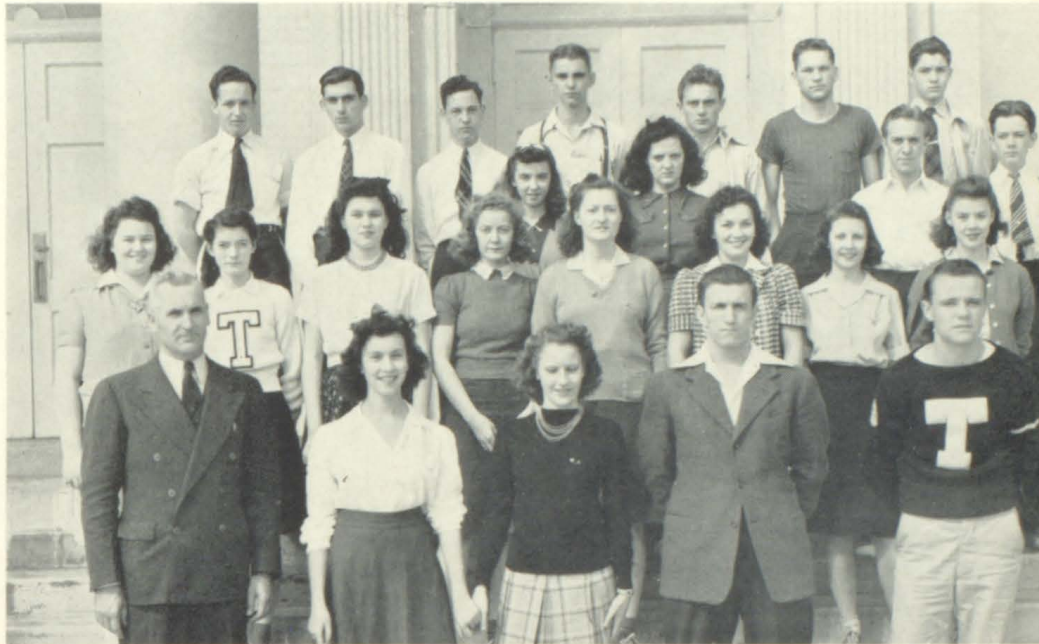
BILL WAYLAND...President

WIMPY GRAY...V. President

PATSY PATRICK...Secretary

ALENE LOGAN...Treasurer

MR. EGGERS...Sponsor



### D. O.

MR. MILLER...Sponsor



Row 1: ARNOLD, NETHERLAND, LESLIE, FRYE, WATSON, BROWN, FRAZIER.

Row 2: HARRISON, COMBS, MOTTERN, BOUTON, LEACH, VANCE, HAYES.

Row 3: REXRODE, WARREN, RINGLEY, McCARY, J. RINGLEY, LANE.

Row 4: MR. MILLER, McCRAY, WILLIAMS.



Row 1: FALLIN, BUCKLES, COMERFORD, OWEN.

Row 2: FURSE, JANES, MILLARD, CRENSHAW, BEATY, SHOEMAKER, BACHMAN, GRAY, DEFRIECE.

Row 3: WINDERS, NICKELS, CAMPBELL, BLEVINS, BOWERY, SMITH, GLOVER, SMITH, MISS SYPHER.

Row 4: KELSO, DALTON, LEE, SMYTHE, POWERS, BARR, HORNE.

## DRAMATICS CLUB

### OFFICERS

#### Fall

WILMA COMERFORD—  
President  
JEAN BUCKLES V.—President  
WYLMA OWEN—Secretary  
BILL RUTHERFORD—  
Treasurer

#### Spring

LANDON FALLIN—President  
BILLY RUTHERFORD—  
Vice-President  
JACK KELSO—Secretary  
WILMA COMERFORD—  
Treasurer  
MISS SYPHER—Sponsor

## ALCHEMIST CLUB

### PRESIDENTS

#### Fall

I R. E. McCLELLAN  
II AUBREY MEADOWS

#### Spring

I MARTHA HAVENS  
II TED STAUFFER

MISS SMITH, Sponsor

Row 1: MAUK, NEAL, HULSEY, McDONALD, MEADOWS, RIDDLE, JONES.

Row 2: CALHOUN, KELLER, HAVENS, ADAMS.

Row 3: WARREN, WINEBARGER, WININGER, McCLELLAN, COLVARD, CARTER.

Row 4: MISS SMITH, BOWERY, SMITH, TEMPLETON, BOYD, CARRIER.

Row 5: ROBERTS, RUCKER, HILT.



- Row 1:** OWEN, REPASS, MORRIS, STONE, P. EGGERS, CAMPBELL, SALYER, M. COMBS, BROGLIN, M. V. COMBS, HAGY, HICKS, IZZEDIN, SLAGLE, COFFEY.
- Row 2:** HOCKETT, FLEENOR, M. BARKER, SPARGUR, DENTON, RINGLEY, BUSH, COLE, F. EGGERS, FERGUSON, HOOKS, MISS FORTUNE.
- Row 3:** VANCE, WININGER, BABB, WALLS, WEBB, PATRICK, CALHOUN, SEXTON, FAUCETTE, C. BARKER, EVANS, WATSON, CRUMLEY.
- Row 4:** SAMS, PHILLIPS, BOURNE, KELLY, CUNNINGHAM, DAVIS, OVERBAY, SULT, BEWLEY, GRAY, HAMMER, LANE, POWERS.

**Row 5:** CORRELL, JOHNSON, M. CARTER, HAYNES, PROFFITT, CROW, BEATY, D. CARTER, BROWN, FAIDLEY, LESLIE, LEGET.

## HOME ECONOMICS CLUB

### PRESIDENTS

#### Fall

- 9b I..... PHYLLIS EGGERS  
 9b II..... DORIS HOCKETT  
 9a MARY GRAHAM HOOKS  
 III..... MARY JANE POWERS  
 IV..... VIRGINIA BABB

#### Spring

- 9b..... WINONA McCORD  
 9a I..... RUTH MARIE WALLS  
 9a II..... JANE ANNE STONE  
 III..... JANE BURROW  
 IV..... LETA JOHNSON  
 MISS FORTUNE..... Sponsor



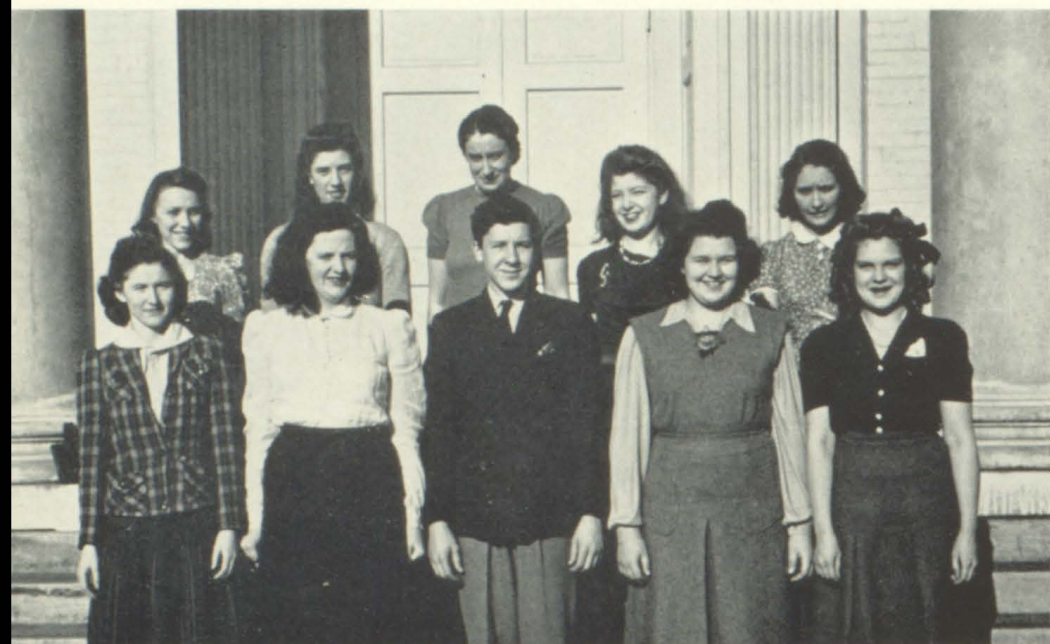
### T CLUB

- Row 1:** REESE, SALLEY, LOGAN, SHERWOOD, PATRICK, LYNCH, COFFEY.
- Row 2:** HOGSETT, D. NEAL, HUNT, HAMRICK, MOTTERN, HAMM, BOYD.
- Row 3:** LAMBERT, HARRIS, STICKLEY, LANE, GRAY, WAYLAND, SMYTHE, C. NEAL, A. O'DELL.
- Row 4:** SMITH, B. FAUCETTE, DRIVER, O'DELL, J. FAUCETTE, JONES.
- Row 5:** POST, McCALL, MEADOWS, HILTON, STONE, WYATT, C. O'DELL.



Row 1: LYNCH, GRAY, RIDDLE, BOYD, JONES.

Row 2: BANE, TEMPLETON, MISS STERRET, SENTER, McCLELLAN.



Row 1: MR. SMITH, POST, NICAR, HULSEY, HAMMER, WINDERS, BOYD.

Row 2: INGRAM, LEE, DULANEY, JONES, RIDDLE, HARRIS, RUTHERFORD, KELSO.

## LATIN CLUB

### OFFICERS

#### Fall

ARTHUR RIDDLE...President  
HELEN GRAY...V.-President  
ROSEMARY JONES—  
Secretary  
MARY LEE LYNCH—  
Treasurer

#### Spring

SAM STEPHENSON—  
President  
VIRGINIA TEMPLETON—  
Vice-President  
DOROTHY BULLOCK—  
Secretary  
BETTY BOYD...Treasurer  
MISS STERETT...Sponsor

## JR. CIVITAN CLUB

### OFFICERS

#### Fall

ROBERT BOYD...President  
JACK WINDERS—  
Vice-President  
BILL HAMMER...Secretary  
BOBBY NICAR...Treasurer

#### Spring

JACK WINDERS...President  
SAM LEE...Vice-President  
R. E. McCLELLAN—  
Secretary  
LYLE JONES...Treasurer  
MARTHA JEAN HULSEY—  
Sweetheart  
MR. SMITH...Sponsor



Row 1: BOYD, HUNT, COFFEY, NEAL, BURROW, FERGUSON.

Row 2: PHILLIPS, REESE, McCROSKY, ALLEN, LYNCH, TEMPLETON, BEIDLEMAN, FLETCHER, SALYER, PHELPS.

Row 3: REEL, BURROW, PETERS, SMITH, HOGSETT, SALLEY, HICKS, COMBS, BROGLIN.

Row 4: MISS COMBE.

### GIRLS' ATHLETIC CLUB OFFICERS

GLADYS COFFEY\_President  
DORIS NEAL\_V.-President  
JEAN FERGUSON\_Secretary  
BETTY BOYD\_\_\_\_Treasurer  
JANE BURROW—  
Publicity Chairman  
LOUISE HUNT—  
Program Chairman  
MISS COMBE\_\_\_\_\_Sponsor



### GIRL SCOUTS

JANE BURROW\_\_\_\_\_Scribe  
DORIS NEAL\_Patrol Leader  
MISS FORTUNE\_\_\_\_\_Sponsor



Row 1: BABB, BURROW, HARKLEROAD, NEAL, JONES, GRAY, FERGUSON, PROFFITT.

Row 2: MISS FORTUNE, HUNT, BIRDWELL, McCROSKY, BARKER, MORRIS, STICKLEY.

Row 3: FRANCISCO, PATTON, FAUCETTE, CARMODY, BROGLIN.



Row 1: JONES, HARKLEROAD, McDONALD, NEAL, LOGAN, SHERWOOD, ADAMS.  
 Row 2: FRYE, OWEN, S. VANCE, BANE, BOUTON, J. CAMPBELL, COFFEY, CHILDRESS.  
 Row 3: PATRICK, BABB, BLEVINS, BOWERY, HAVENS, M. R. VANCE, B. CAMPBELL, HAMRICK.  
 Row 4: HUNT, BEATY, CRENSHAW, MRS, MARNEY, GRIMES, KELLER, GLOVER, BACHMAN.

**GIRLS' HI-Y  
OFFICERS**

**Fall**

DORIS NEAL.....President  
 FRANCES HARKLEROAD,  
 ALENE LOGAN...Co-V.-Pres.  
 BILLIE JO SHERWOOD—  
 Secretary  
 WAYNE McDONALD—  
 Treasurer

**Spring**

FRANCES HARKLEROAD,  
 VIRGINIA BABB...Co.-Pres.  
 SARA VANCE...V.-President  
 DORIS NEAL....Secretary  
 SARAH GRIMES...Treasurer  
 MRS. MARNEY....Sponsor

**BOYS' HI-Y  
OFFICERS**

**Fall**

MARION COLVARD—  
 President  
 WIMPY GRAY...V.-President  
 CHARLES NEAL...Secretary  
 DON STICKLEY...Treasurer

**Spring**

CHARLES NEAL...President  
 W. K. LAMBERT—  
 Vice-President  
 WIMPY GRAY...Secretary  
 DAVE PARRISH...Treasurer  
 MR. MILLER.....Sponsor

Row 1: RUTHERFORD, GODSEY, GRAY, CONNER, B. FAUCETTE.  
 Row 2: J. FAUCETTE, McNEW, PHILLIPPI, WAYLAND, STICKLEY, COLVARD.  
 Row 3: MR. MILLER, MAUK, CAMPBELL, NEAL, LAMBERT, PARRISH.



- Row 1: RUCKER, MAUK, HAVENS, HAMRICK, SHERWOOD, BLEVINS.  
 Row 2: CARMODY, PROFFITT, REEL, COFFEY.  
 Row 3: COMBS, BABB.  
 Row 4: KING, FAUCETTE, PATRICK.  
 Row 5: WALLS, HICKS, POWERS, MISS HAWKINS.

**JUNIOR RED CROSS**

**OFFICERS**

- EMMA HAMRICK President  
 MARTHA HAVENS—  
     Vice-President  
 DORIS MAUK Secretary  
 JERRY RUCKER Treasurer

**CITY COUNCIL**

- GLADYS COFFEY President  
 DOTTY CARMODY—  
     Vice-President  
 MISS HAWKINS Sponsor



**SPEECH CLUB**

**OFFICERS**

**Fall**

- TOM DRIVER President  
 EMMA HAMRICK—  
     Vice-President  
 BILLIE CHILDRESS—  
     Secretary  
 JACK FAUCETTE Treasurer

**Spring**

- BOBBY JOE COONTZ—  
     President  
 AUBREY MEADOWS—  
     Vice-President  
 EMMA HAMRICK Secretary  
 TOM DRIVER Treasurer  
 MRS. CALDWELL Sponsor



- Row 1: J. FAUCETTE, HAMRICK, BOAZ, DRIVER, CHILDRESS, JONES, B. FAUCETTE.  
 Row 2: REED, WINEBARGER, BEIDLEMAN, GRAY, MCKEE, REEL.  
 Row 3: POST, MUNDIE, STICKLEY, PATTON, BURROW.  
 Row 4: MRS. CALDWELL, MACMILLAN, HUDDLE.



- Row 1: B. FAUCETTE, MAUK, CHILDRESS, McDONALD, WINDERS, KELSO.  
 Row 2: HARKLEROAD, ADAMS, HULSEY, J. FAUCETTE.  
 Row 3: MILLARD, HAMRICK, KILGORE, BOWERY, SMITH, BLEVINS.  
 Row 4: MISS SYPHER, SHANKLE, BUCKLES, COMERFORD, BACHMAN CARTER, CAMPBELL.  
 Row 5: DRIVER, HORNE.



**FRENCH CLUB  
 PRESIDENTS**

**Fall**

- I BILLIE CHILDRESS  
 III JACK KELSO

**Spring**

- II WILMA COMERFORD  
 IV CHARLES HORNE  
 MISS SYPHER, SPONSOR



**SPANISH CLUB  
 OFFICERS**

**Fall**

- ALONZO HENRY...President  
 HERBERT DAVIDSON—  
 Vice-President  
 BILLIE HAMM...Secretary  
 JEAN CAMPBELL...Treasurer

**Spring**

- HERBERT DAVIDSON—  
 President  
 AUBREY MEADOWS—  
 Vice-President  
 JOSEPHINE DEFRIECE—  
 Secretary  
 BETTY BOYD...Treasurer  
 MISS HAWKINS...Sponsor

- Row 1: DAVIDSON, HAVENS, DEFRIECE, HAMM, CAMPBELL, HENRY.  
 Row 2: BURNETTE, REED, LYNCH, BOYD.  
 Row 3: MISS HAWKINS, BRUMMIT, FRANCISCO, MCCALL.  
 Row 4: ALLEY, FERGUSON, MEADOWS.





- Row 1: BAKER, NICKELS, HOOKS, R. JONES, B. FRANCISCO, GRAY, STICKLEY, HILTON.  
 Row 2: MAUK, A. FAUCETTE, WILLIAMS, CLAYMAN, DENTON, STEPHENSON, HELTON, PROFFITT, HENRY, C. FRANCISCO, S. C. FAUCETTE, OVERMAN, KELSO.  
 Row 3: LEGET, IZZEDIN, PROCTOR, GODSEY, PHILLIPS, CHASE, PUCKETT, ANDERSON, B. JONES, BUTTERWORTH, DRIVER, STONE.  
 Row 4: KUHNERT, HASHBARGER, C. O'DELL, DAVIDSON, REYNOLDS, LONG, CRENSHAW, MCCALL, BOYD, HARR, MACMILLAN, MOORE, L. JONES, A. O'DELL, FERGUSON, M. O'DELL, POST, HAMMER, KING.  
 Row 5: MEADOWS, BARKER, BEWLEY, C. BARKER, HAMM, ADAMS, MR. WRIGHT, Sponsor.

## BAND ~ ~ ~ CHORUS

- Row 1: ROYSTON, BEIDLEMAN, BEWLEY, BOWMAN, MORRIS, SHOEMAKER, COMBS, OWEN, GRAY, HULSEY, BABB, HENRY, MCCALL, DAVIDSON, GODSEY, PHELPS, CARTER, PHILLIPS, BUSH, SALYER, WATSON, MR. WRIGHT.  
 Row 2: WARREN, HAMMER, SEXTON, RUCKER, FLEENOR, VANCE, WOLFE, BROWN, HAGY, REPASS, P. EGGERS, STONE, REYNOLDS, C. FRANCISCO, BRUMMIT, ANDERSON, PROCTOR, STICKLEY, S. C. FAUCETTE, IZZEDIN, WININGER, MARTIN, CRENSHAW.  
 Row 3: RINGLEY, MAUK, FLEENOR, B. FRANCISCO, KEESEE, CALHOUN, LEGET, PROFFITT, O'DELL, BARKER, LONG, MACMILLAN, CLAYMAN, KUHNERT, BOYD, MOORE, LEONARD, DENTON, WILLIAMS, A. FAUCETTE, H. GRAY, KING, CAMPBELL, MCCROSKY, F. EGGERS, MR. WRIGHT, Sponsor.

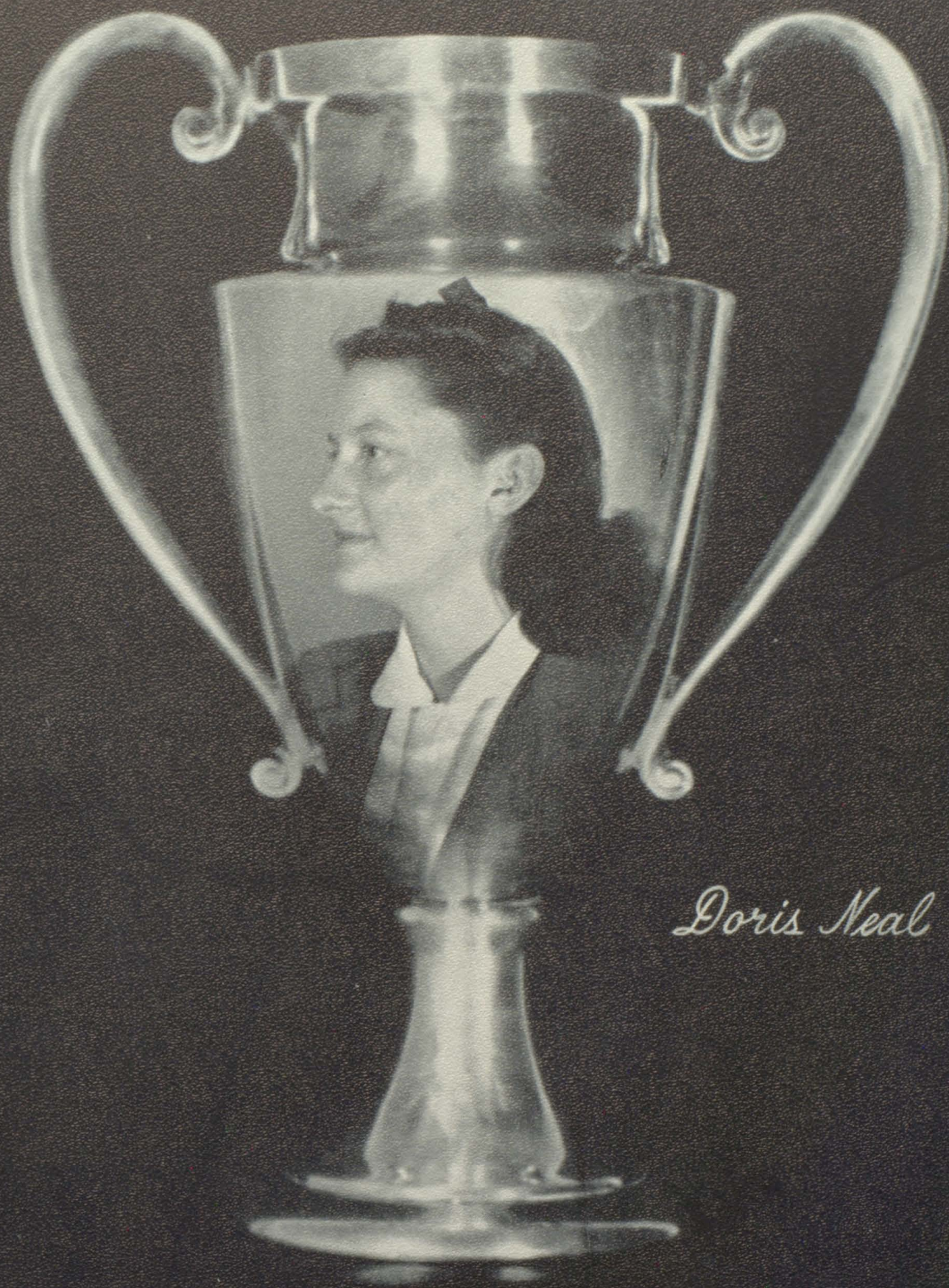




# Senior's Diary

**Sept. 13**—Rousing pep meeting today. Looks as if we've really got the spirit this year. Started off right by beating Glade Spring 13-0. **Sept. 16**—O. D. came to school with lipstick all over his chin. Even his best friends wouldn't tell him. Who did you have a date with, Ossie? **Sept. 19**—Those Sub-Debs are at it again. Hair curlers, cold cream, signs, et cetera were in evidence today as they began initiation. **Sept. 23**—Wanna buy a magazine? If so, just see any Senior, i.e., if he doesn't see you first. The first campaign to raise money for the Senior class is off with a bang! **Sept. 24**—Mrs. Caldwell! How could you? In English class, pointing to the blackboard she said, quote, "Now, if you'll just watch closely, I'll run through it," unquote. **Sept. 25**—Mr. Sadler says the "woman is the root of all evil." If he doesn't quit talking about girls he's apt to poison the boys' minds against them. What minds???? **Sept. 27**—Mr. Sadler left today to join the American Airlines. He surely will be missed. **Oct. 1**—Civitan outing at Camp Unaka. Food was dee-lish and moon was a hum-dinger. **Oct. 2**—Scene today: Elmer Vires and Mildred Terry walking down the hall holding hands. Tch! **Oct. 3**—School spirit is improving. Good pep meeting today and we tied Johnson City 6-6. **Oct. 6**—Girls' Hi-Y initiation began. Boys are gonna protest. What's the matter? Can't they stand it? **Oct. 9**—The cafeteria became the happy picnicking grounds for new members of the Girls' Hi-Y. They brought their lunch and sat on the floor and ate it. **Oct. 10**—Kid Del Rio spoke to us in assembly. It was very entertaining, especially when "Patsy" Patrick boxed thin air and Betty Campbell. Winner? Afraid to say. **Oct. 14**—Wayne was absent today and Lewis looked like the forgotten man. Man??? **Oct. 15**—Mr. Gillingham and Evamay played "cross questions and silly answers" at Cadmus Club today. She kept us twenty minutes longer by asking dumb questions. **Oct. 17**—All the football players flirt with "Peachy" Reed in fourth study hall. Dave Parrish seems to be in the lead. **Oct. 23**—Girl Scouts presented a very entertaining assembly program. The speaker was a girl from England. Also, a good pep meeting. **Oct. 24**—Movie today. **Oct. 28**—Scalp those Indians, that's our cry! We play Kingsport this week. **Oct. 30**—The Junior Class of 1941 presented a beautiful portrait of Mr. Kingers to the school. An impressive ceremony was held for the presentation. **Nov. 3**—Lon Lilley and Buddy McGhee almost convinced Miss Sypher that English does them no good. But—I notice they're still taking it. **Nov. 11**—Armistice Day. A moment of silence was observed at 11 o'clock today. **Nov. 14**—What a pep meeting!! What a game!! Virginia sunk the Viking ship 20-19 for the first time in eight years. **Nov. 18**—Junior Civitans defeated Hi-Y in basket-ball today. **Nov. 20**—Louise Hunt turned up in bookkeeping class with a Pepsi! Somebody's been to the "Friendly." **Nov. 21**—The Junior Class presented "She Stoops to Conquer" after which they entertained the Seniors with a dance. **Nov. 24**—Scene in hall today: Elmer and (no not Mildred) Josephine holding hands. Elmer!!!! **Nov. 27**—Beautiful Thanksgiving Day. It's wonderful to be free, white and happy, (and out of school for two days). **Dec. 1**—Breathes there a man with soul so dead who never hath turned his head and said, "Hmm, not bad." **Dec. 2**—Hooray, two movies today. One about food, nearly drove people mad. Everybody developed an appetite in assembly. **Dec. 3**—Report cards. "Many a heart that is weary today." **Dec. 4**—Bang! Bang! Fireworks in the halls today. Well, as Mr. Gillingham says, "Christmas is coming." **Dec. 5**—Football banquet. Bill Wayland elected new captain and "Mayor" Lambert, co-captain. Gosh, they sure are bashful. **Dec. 16**—Bible Club presented a very good Christmas program today. **Dec. 18**—Last day of school before holidays. **Jan. 9**—Dramatics Club gave a swell assembly program today. Especially enjoyed was the ballet dance, "Fools Rush In", by Evamay Furse and "Buck" Janes. **Jan. 14**—One week until exams. O, well, things could be much worse. Remember Pearl Harbor? **Jan. 16**—Mrs. Caldwell became a grandmother. Congratulations! **Jan. 21, Jan. 22, Jan. 23**—EXAMS. **Jan. 24**—We trounced the undefeated Blountville team tonight in two overtime periods. Whew! What a game! **Jan. 26**—Heard the latest moron joke? They seem to be the latest thing. And are they pointless? **Jan. 29**—Bill Wayland elected president of Student Body—and he's absent with the mumps. There seems to be quite an epidemic. **Feb. 4**—Hear any squealing during sixth period? That was Lewis Grubb being thrown out of Senior algebra class. O, well, he never understood the stuff, anyway.





*Doris Neal*

# *Athletics*





# *Hail to Vikings*

CATHERINE BARKER, MARJORIE BARKER,  
PHYLLIS BEWLEY

JACK FAUCETTE, ALENE LOGAN, WYLMA OWEN, JULES SMYTHE, PATSY PATRICK, BILLIE JO  
SHERWOOD, BILL FAUCETTE.







## COACHES

### COACH ESSER

attended Bristol, Tennessee, High School and here he was captain of basket-ball, baseball and co-captain of football. From high school he went to King College, and there he was captain of basket-ball and co-captain of football. In college he received honorable mention in the Smoky Mountain Conference. In 1937, he became assistant coach at Tennessee High School.

### COACH MACKEY

attended Emory and Henry College, and there earned 12 monograms. He was football and baseball captain there, and made the Little All-American Football Team in 1934. In 1935, he was assistant coach at Johnson City and from 1936 to 1939, he was coach at Norton High School. While attending Ohio State University as a graduate student in 1939, he was assistant freshman coach. In 1940-41, he was assistant coach at Galion High School, Galion, Ohio. In 1941, he came to Bristol to be head coach at Bristol, Tennessee, High School.



## GOOD SPORTSMANSHIP

Good sportsmanship is to be prized  
above all,  
And even though we've lost a game  
on points,  
If we've enjoyed ourselves and  
played the game,  
And at the end are able to say to all,  
We've done our best, no matter what  
the score,  
Then we have truly formed a high  
ideal,  
An inspiration for our future years—  
Good Sportsmanship.

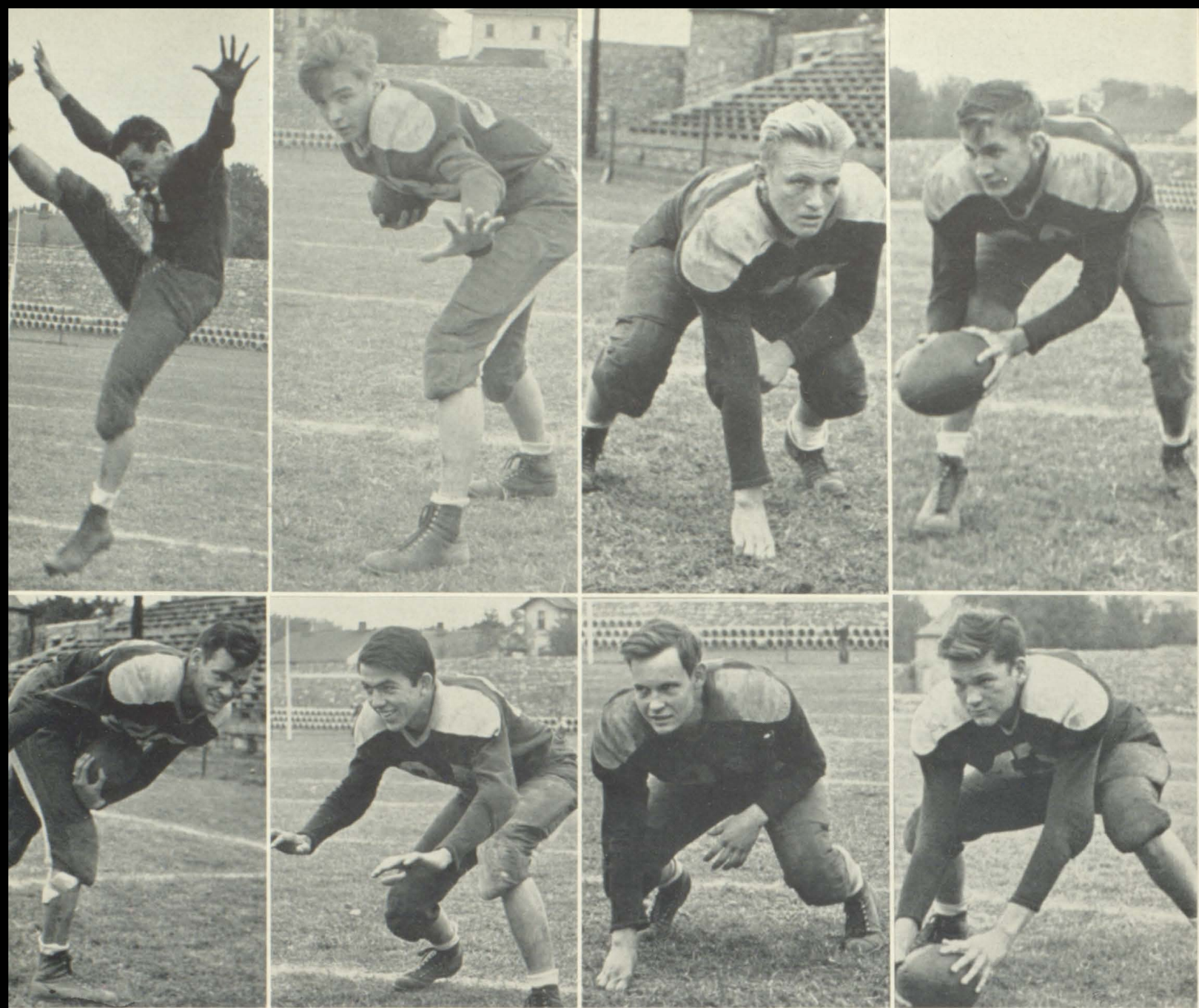


WARREN PHILLIPPI, Captain

- Row 1: Managers LEE SPAULDING, GEORGE LONG, WAYNE BURNETT, CHARLIE HARRIS.  
Row 2: BILL WAYLAND, HERBERT ROBERTS, MACK BRAY, BUD BLEVINS, BOB LESLIE, JOHN FORD, JACK WINDERS, CHALMER BASHAM, ED FAIDLEY, EARL LANE.  
Row 3: CHARLES WYATT, MAYOR LAMBERT, SAM FAIDLEY, DAVE PARRISH, CHARLES NEAL, JAMES ANDERSON, BRUCE CAMPBELL, BILL RILEY, HERBERT SEAVY, JOHN BELL.







**Top Row:** B. WAYLAND, H. SEAVY, M. BRAY, B. RILEY.

**Bottom Row:** B. CAMPBELL, J. ANDERSON, J. FORD, D. PARRISH.

### REVIEW OF THE FOOTBALL SEASON

**Sept. 12**—The Vikings opened their 1941 football season with a stubborn Glade Spring eleven, in the local stadium, but a final quarter rally brought a 13-0 victory.

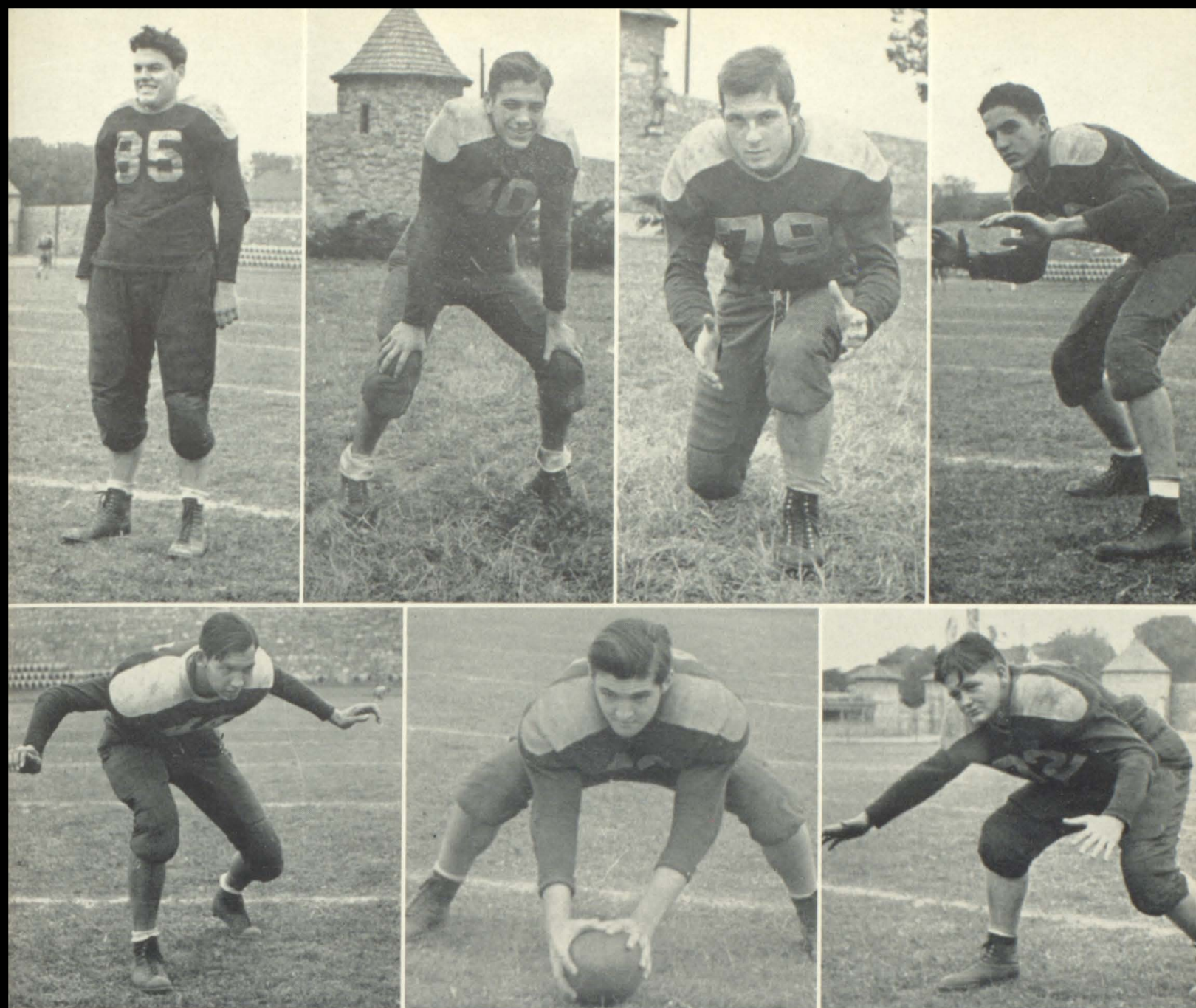
**Sept. 19**—Handicapped by the loss of several injured starting men, the home eleven played host to Erwin, but lost the Big Five tilt 18-0.

**Sept. 26**—Still suffering from bad breaks, the Vikings invaded Knoxville to meet Young High, but came home with a 20-0 defeat.

**Oct. 3**—Revising his lineup, Coach Mackey and his boys journeyed to Johnson City. After a thrilling first minute score by the Vikings, the Hilltoppers tied the score 6-6 with a fourth quarter sprint.

**Oct. 10**—Returning to the home field, the inspired Vikings met a small, but fighting St. Charles eleven; however, the Maroon and White team overwhelmed them 51-0.





**Top Row:** W. K. LAMBERT, W. GRAY, H. LITTLEFORD, C. NEAL.  
**Bottom Row:** S. FAIDLEY, J. WINDERS, C. WYATT.

**Oct. 17**—For four exciting quarters the Betsy Cyclones and the Tennessee Vikings fought up and down the field until an intercepted pass gave Betsy the break, and the ball game 6-0.

**Oct. 23**—Although this was scheduled to be an open date, the Tennessee eleven took on a powerful Meadowview team, which proved to be stiff opposition, the Vikings winning 19-6.

**Oct. 30**—Seeking to break the long string of defeats at the hands of the Kingsport Indians, the home team fought their hearts out for four quarters, only to suffer a 26-12 defeat.

**Nov. 7**—Still displeased by the setback by Kingsport, the Viking squad invaded Morristown, seeking a win. The result was a 13-13 tie.

**Nov. 14**—The big day of the season finally came. Virginia and Tennessee were both in tip-top condition. When the final whistle blew, the Bearcats led the Vikings by the margin of one point, the score being 20-19.



# AT THE GAMES





# BASKET-BALL



## VARSITY SQUAD

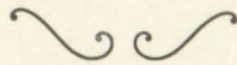
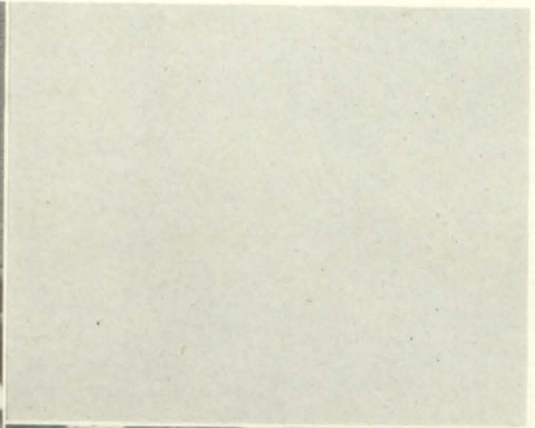
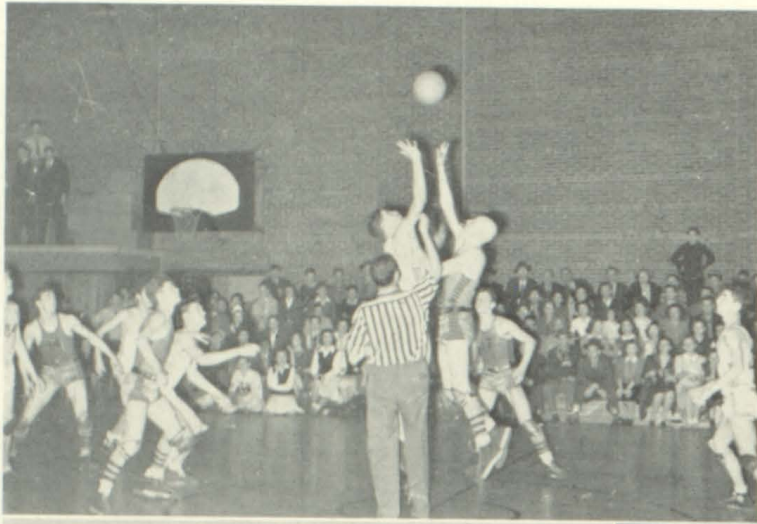
ARTHUR RIDDLE, CHARLES HARRIS, MAC PHIPPS, JULES SMYTHE, R. E. MCCLELLAN, CHARLES NEAL, JOE SKINNER, HERBERT SEAVEY, SAM LEE, MAC BRAY, WIMPY GRAY

## JUNIOR VARSITY SQUAD

JOE SKINNER, CHALMER BASHAM, DICK EASLEY, CHARLES WYATT, EDWARD CAMPBELL, EUGENE DONALDSON, H. R. BIBEE, JOHN ADAMS, JOHN DROKE, MAC BRAY, GEORGE FURGE, ALLAN FINKLE, JERRY RUCKER, ARTHUR RIDDLE







**SAM LEE**, Guard

**MAC PHIPPS**, Forward

**HERBERT SEAVEY**, Forward

**JULES SMYTHE**, Guard





### SEASON'S RECORDS

Dec. 12	Tennessee High	42	Wallace	19
Dec. 16	" "	24	Holston Valley	20
Dec. 19	" "	24	Johnson City	12
Jan. 9	" "	16	Knoxville High	40
Jan. 10	" "	23	Holston Valley	14
Jan. 13	" "	30	Elizabethton	32
Jan. 17	" "	21	Chattanooga	36
Jan. 23	" "	26	Erwin	25
Jan. 24	" "	30	Blountville	28
Jan. 30	" "	23	Kingsport	38
Jan. 31	" "	24	Johnson City	22
Feb. 7	" "	14	Bradley	28
Feb. 13	" "	33	Elizabethton	28
Feb. 14	" "	23	Bluff City	18
Feb. 16	" "	21	Blountville	24
Feb. 18	" "	39	Morristown	34
Feb. 19	" "	29	Knoxville	42
Feb. 20	" "	35	Chattanooga	45
Feb. 24	" "	44	Erwin	31
Feb. 28	" "	28	Kingsport	40

#### City Championship Games

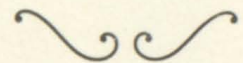
Jan. 26	Tennessee High	23	Virginia	21
Feb. 6	" "	22	Virginia	23
Feb. 26	" "	35	Virginia	26

#### Tournament

Mar. 3	Tennessee High	40	Mary Hughes	17
Mar. 6	" "	26	Blountville	28
Total	Tennessee High	573	Opponents	613



COACH MACKEY

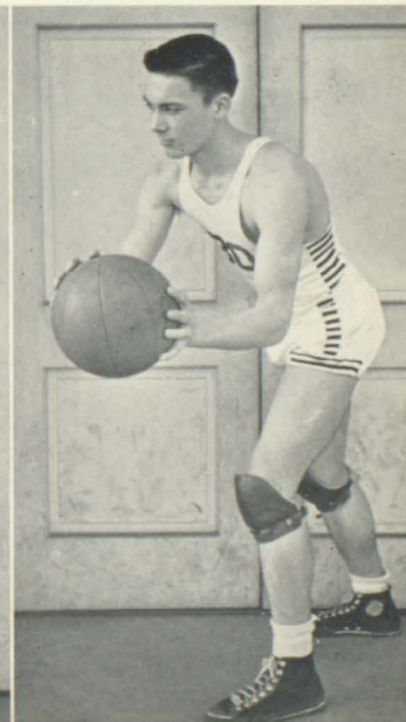
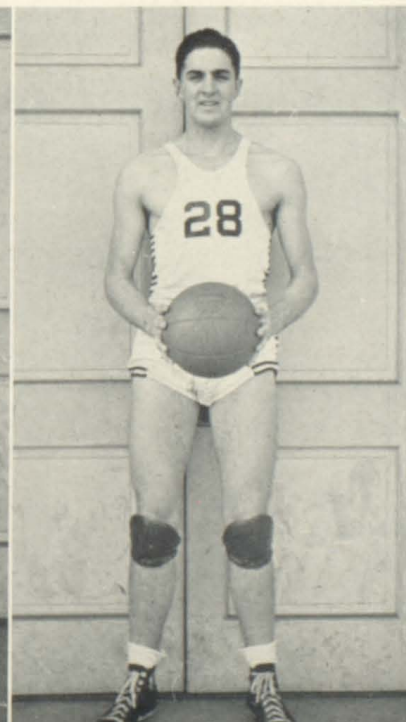
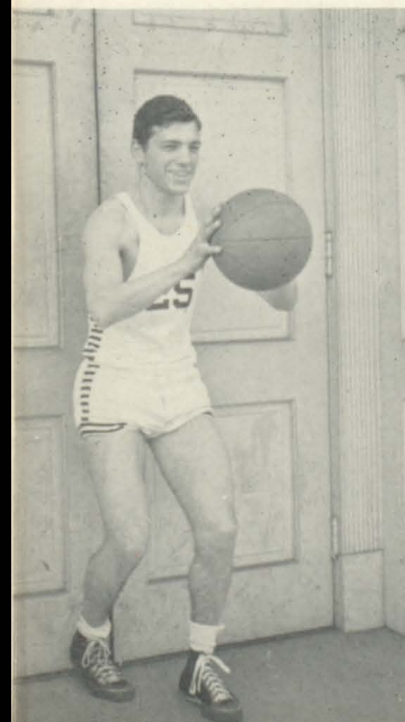


WIMPY GRAY, Guard

CHARLIE HARRIS, Forward

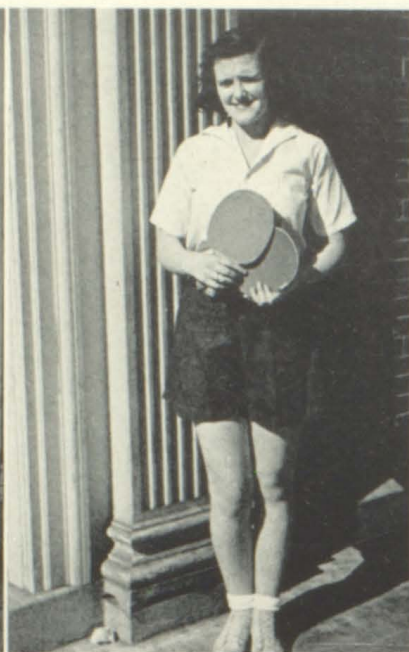
CHARLES NEAL, Center

R. E. McCLELLAN, Center





# GIRLS' ATHLETIC ASSOCIATION



**DORIS NEAL**

Basket-ball Manager

**BETTY BURROW**

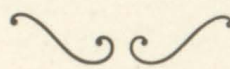
Ping-Pong Manager

**LOUISE HUNT**

Badminton Manager

**JANE BURROW**

Volley-ball Manager

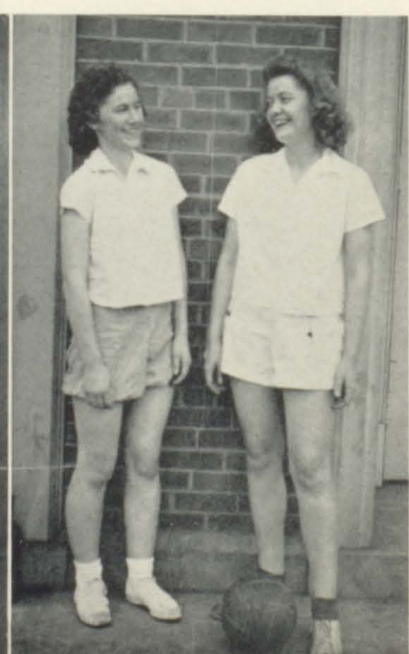


**VIRGINIA TEMPLETON**  
Foul Pitching Manager

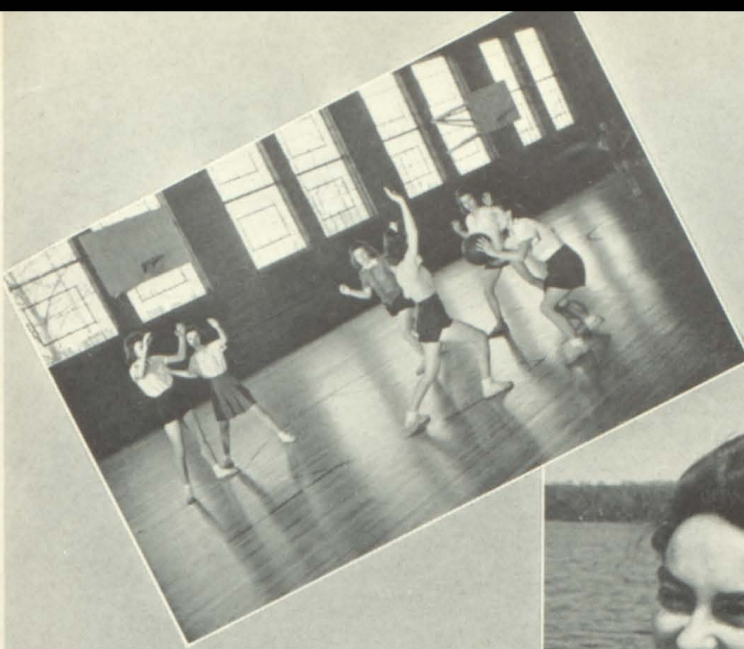
**SARA VANCE**  
Shuffleboard Manager

**JANE PHELPS**  
Softball Manager

**MARY LEE LYNCH, LOUISE HUNT**  
Volley-ball Officials







BASKET-BALL



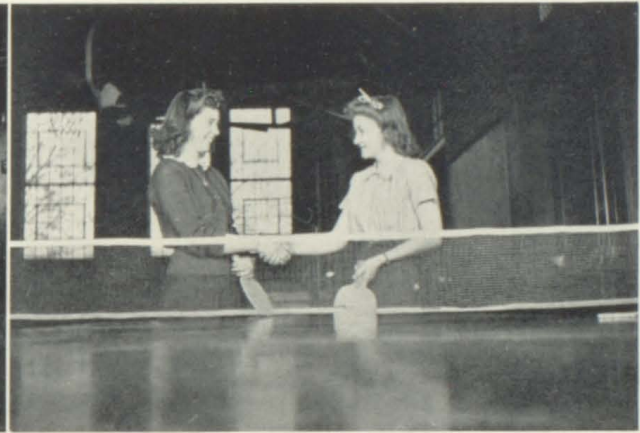
VOLLEY-BALL



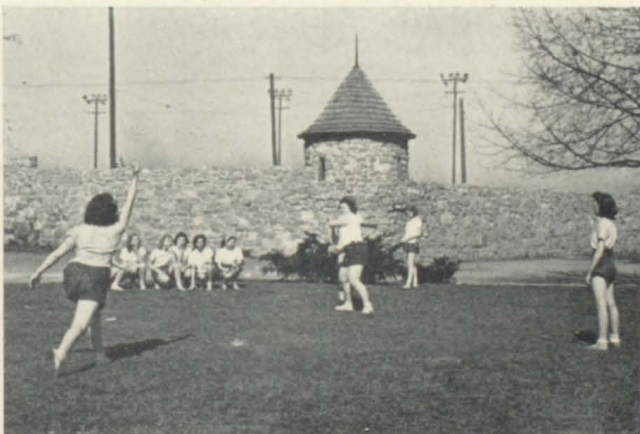
FRANCES E. COMBE  
Director of Girls' Physical  
Education Program



SHUFFLEBOARD



PING PONG



SOFTBALL



KICKBALL



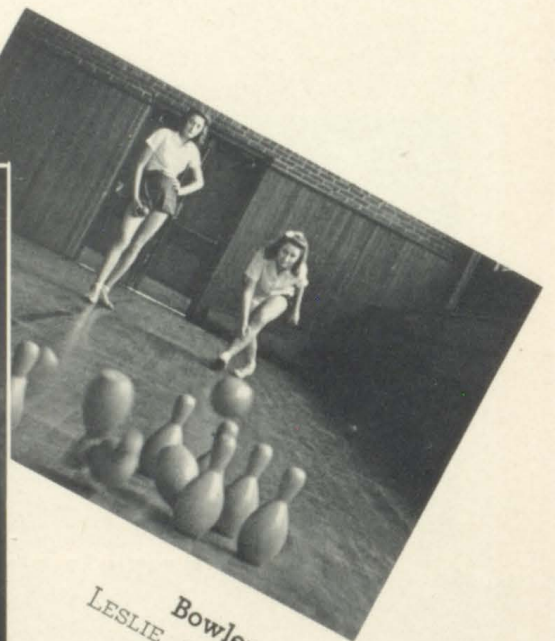


**CHAMPION SENIOR VOLLEY-BALL TEAM**

LOUISE HUNT, WYLMA OWEN, DORIS NEAL, BILLIE WININGER, WILMETH CARRIER, VIRGINIA TEMPLETON, Captain; ELINOR BOWERY; SARA VANCE



**Tumblers**  
SHOEMAKER AND BROGLIN



**Bowlers**  
LESLIE AND MORRIS



Top Center:  
**Pyramid Builders**  
BROGLIN, EVANS, GRAY,  
HAMMER, SHOEMAKER,  
CAMPBELL

Left:  
**First Aid**  
STICKLEY, MUNDIE,  
FLEENOR, FAUCETTE





*Martha Jean Hulsey*

*Features*





RISING TEMPERATURE



THANK YOU,  
COME AGAIN



"42er's"

JUNIORS GIVE US A FIT







CHOW TIME



FUTURE EINSTEINS







Blowing It Out

Lot of Brass

Noise Makers

Chantez-vous Francais?

Wonder If They Can Whistle?

Wood - - - Wind





KEEP 'EM FLYING



BIG BOSSES

"FURRINERS"  
ENTERTAIN US



TO KEEP US FROM  
BEING MORONS





# REMEMBER PEARL HARBOR

# SOCIAL BUTTERFLIES







*Buy*  
*Defense Bonds*  
*and*  
*Stamps*



Compliments of

STERLING *L* HOUSE





★  
C  
L  
A  
S  
S  
★



★  
1  
9  
4  
5  
★

1941 Graduates of Tennessee High at King College

**KING COLLEGE**  
**BRISTOL, TENNESSEE-VIRGINIA**

Cooperating with the Government in its defense program, high school students may enroll  
June 1 for regular work.

**An Excellent Four-Year Senior College, with Hundreds of Alumni in Bristol**

CATALOG ON REQUEST

**SHANKEL MILLING CO.**

Bristol, Va.



**Flour, Meal and Feed**

Compliments of



Ninth and State Sts.

Compliments of



607-609 State Street    :-    Bristol

"Furniture of Enduring Quality"

**FURROW ELECTRIC COMPANY**

Modern Methods of Safe Electric  
Wiring and Correct Lighting

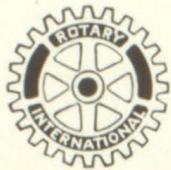
Lighting Fixtures  
Electrical Supplies

**"Everything Electrical"**

408 State Street    :-    :-    Phone 162



ROTARY CONGRATULATES



The Class of 1942

"Builders of Good  
Citizenship"



BRISTOL CIVITAN CLUB

**FLOWERLAND**

"We Design to Please"

Corner Sixth and Shelby Streets

Phone 1999

BRISTOL, TENN.

Compliments of

**COWAN-GRANT CO.**

BRISTOL, VIRGINIA

**SEVIER'S**

**DRY CLEANING  
LAUNDRY**

**PHONES  
44 AND 1444**

**EDGEMONT SERVICE STATION**

Phone 1298

BRISTOL, TENNESSEE

Compliments

**THE S. E. MASSENGILL CO.**

Manufacturing Pharmacists

Bristol, Tenn.-Va.

**BRISTOL FURNITURE CO., Inc.**

**"We Furnish the Home Complete"**  
Pay Us a Visit—The Store out of the High  
Rent District—Walk a Block and  
Save the Difference

Corner Sixth and Shelby Streets

Bristol, Tennessee

**PIANOS**

Band Instruments

Sheet Music

» «

**McCLISTER MUSIC CO.**



Compliments of



**HOLSTON SMALL LOAN COMPANY**



All Through the Years


**OLDSMOBILE**

The Oldest Name in American  
Motordom

**BRIGHTWELL-SPINKS, Inc.**

**GOOD GLASSES**  
IF YOU NEED THEM  
**GOOD ADVICE**  
IF YOU DON'T

**DR. J. L. McCORD**  
**OPTOMETRIST**



Eyes Examined      Glasses Fitted

592 State St. Phone 5 Bristol, Tenn.

FOR CLEAN Recreation  
**Visit the BRUNSWICK**  
12 Lee Street  
Bristol, Virginia

Compliments of  
**The Bristol Grocery Co., Inc.**  
Bristol, Virginia



Compliments of

**BALL BROTHERS, Inc.**

**FURNITURE**



**HUTCHESON STUDIO**

Photographs of Distinction

Bristol, Virginia

Our Motto: "Always the Best"

**BRISTOL FLORAL COMPANY**

534 STATE STREET



BRISTOL





You Are Always Welcome



**AT MINOR'S**

Compliments of

**W. T. GRANT CO.**

644 State St.      :-      Bristol, Tenn.

**HULSEY FLOOR SERVICE**

Inlaid Linoleum Floors Refinished

PHONE 2005

**KELLY & GREEN**

Photographic Merchandise & Service



514 Cumberland St.      :-      Bristol, Va.

*Easley* **THE BEST**  
**INSURANCE**

**ROBERT M. EASLEY**

Fire—Life—Casualty

Union Trust Bldg.

**SULLINS COLLEGE**

Is fully accredited and offers best advantages in preparation for University or for Remunerative positions.

The advantages in Music, Art, Expression, Dramatics, Home Economics and Secretarial Course are in keeping with the high literary standards. Confer with us at Sullins College for information in reference to any courses desired.

W. E. MARTIN, President

BUY

**HECHT'S**

Fine Bread, Cakes,  
and Pies

For Invisible Half-Soling  
and Shoe Renewing

Take Your Shoes To

**BOSTON SHOE SHOP**

702 State St.      :-      Bristol, Tenn.

Opposite Cameo Theatre

Phone 1768



**MOORE-EARHART COMPANY**  
**ATHLETIC EQUIPMENT AND LUGGAGE**

Outfitters of School and College Teams

647 STATE STREET

-:-

-:-

BRISTOL, VIRGINIA

**EYE IT**

**TRY IT**

**BUY IT**



**McCLURE MOTORS**

**KINNEY SHOE CO.**

Shoes for the Entire Family

504 State Street

Compliments of

**BRADLEY'S DRUG STORE**

**KEMBLE-COCHRAN CO., Inc.**

Foremost for Thirty-four Years

**Booksellers, Stationers, Office Outfitters**  
State Street -:- Bristol, Virginia

Compliments of

**HOTEL BRISTOL**

Bristol, Va.-Tenn.

"Where the Best Costs the Least"

**GLENWOOD—**  
**MOUNTAIN VIEW CEMETERIES**

"Modern Burial Parks"

*Perpetual Care*

PHONE 374

Offices: 7 Moore St., Bristol, Va.

"AHEAD AT THE FOOT" » » »

**Van Dervort's**  
SMART STYLES QUALITY SHOES PROPERLY FITTED

Smart Styles, Quality Shoes Properly Fitted

Paramount Building

-:-

-:-

Bristol, Tennessee



**JAMES M. BARKER, Jr.**  
Fire and Automobile Insurance  
BRISTOL, VA.-TENN

**STONE LUMBER COMPANY**

BUILDING MATERIAL

Phone 5134

--

--

Third Street

Compliments of  
**H. V. SMITH ESSO STATION**  
Corner Fifth and Anderson

**McKAMEY SHOE SHOP**  
For Better Shoe Repairing  
819 Moore Street

**CONGRATULATIONS**

To the members of the 1942 Class we extend our heartiest congratulations. Our very best wishes will follow you into whatever tasks you may now turn. And our service will be available to help you along the road to success.

**TROY LAUNDRY CO.**

INSURANCE REAL ESTATE  
**DICKEY INVESTMENT COMPANY**  
ERNEST H. DICKEY  
PHONE 90  
8½ Front Street -- Bristol, Va.-Tenn.

**WOPI**  
"The Station Most People  
Listen to Most"

THINK IT OVER!  
Your Best Investment Next to Education Is Your Personal Appearance  
We Can Help You With the Latter  
**BLAKLEY-MITCHELL COMPANY**



**FIFTY-THREE YEARS OLD . . . .**

**YET YOUNG IN IDEAS**

If "life begins at 40," we've a thirteen-year jump on life . . . and for those young folks who want things "young", we've the liveliest fashions for young life. For though we've served four generations and have attained our Golden Anniversary, we are entirely in tune with the lives and needs of the younger folk . . . and our stocks are filled with fashions expressly for them.

**THE H. P. KING COMPANY**

**BRISTOL OFFICE SUPPLY COMPANY**

OFFICE SUPPLIES AND EQUIPMENT

**All Makes of Typewriters Rebuilt, Overhauled and Repaired**

Moore Street

-:-

Bristol, Virginia

-:-

Phone 200

We Sell **Wayfarer Shoes** for  
The Entire Family



**BRISTOL HOME TRADE STORE**

MARION COWAN, Manager

Compliments of

**BASSETT'S DAIRY**

**PRODUCTS**

Compliments of

**GIBSON CANDY COMPANY**

CONFECTIONERS

BRISTOL, VA.-TENN.



Compliments of  
**APPALACHIAN HARDWOOD CASKET COMPANY**  
BRISTOL, TENNESSEE

**W. I. BOLLING MOTOR CO.**

=====  
GENERAL REPAIRS  
=====



Carbureter and Ignition Service

**BETTER CLEANING**

Renew the Beauty of Your Garments  
Our Cleaning Methods Will Do it...

**HOME DRY CLEANERS**

HATTERS—CLEANERS—DYERS

**Phone 1704**

16 Front St.            :-            Bristol, Va.

"LEARN IT RIGHT"

**Bristol Commercial College**

Bristol, Tenn.

Compliments of

**COX WHOLESALE CO.**

**Typewriter Sales & Service**

Exclusive ROYAL Representative  
Phone 746            :-            34 Moore St.  
R. L. FLEENOR, Mgr.

Compliments of

**ROBINETTE SERVICE STATION**

SINCLAIR PRODUCTS

Compliments of

**WATT'S BAKERY**



Compliments of

**BRISTOL DRUG**



WE ARE WITH YOU  
**Tennessee High**  
**HOLSTON HARDWARE COMPANY**

Phone 2036

:-

:-

120 State St.



**MOORE'S MANUFACTURING COMPANY**

Potato Chips, Peanuts, Popcorn, Peanut  
Butter Sandwiches, Candies

Compliments of

**FAUCETTE COMPANY**



**JOE LIPPO**

Home-Made Ice Cream  
and Pop Corn

**VIRGINIA INTERMONT**

AN ENDOWED JUNIOR COLLEGE

Accredited by the Southern Association of Colleges and all other agencies that accredit junior colleges, including the University of the State of New York.

**STANDARD COURSES:**

1. Classical two-year courses admitting to Junior Year in Senior Colleges and Universities. 2. General Cultural Courses (largely elective) for those not planning to spend more than two years in college. 3. Home Economics. 4. Business and Secretarial Courses. 5. Art. Fine and Applied Art including Costume Design, Interior Decoration and China Painting. 6. Speech and Dramatic Art. 7. Physical Education. 8. Music: Piano, Organ, Voice, Violin, Theory. 9. High School.

Sports for every student: Archery, basket-ball, field ball, gymnastics, hockey, horseback riding, riflery, swimming, tennis, track, tumbling, volley-ball

Beautiful new Day Students Social Center building constructed in 1940 contains study room, locker and powder rooms, large club room with knotty pine paneling, pegged floor, large stone fireplace and comfortable furnishings.

**For Catalogue and Full Information Apply to**

H. G. NOFFSINGER, President,  
VIRGINIA INTERMONT COLLEGE, Bristol, Virginia

Compliments of

**RALPH'S CONFECTIONERY**

Compliments of

**S. H. KRESS & CO.**

Where "Scholastic" Quality School  
Supplies Are Sold

**Complete Funeral Service**

**AKARD FUNERAL HOME**

Corner James and Cumberland Streets  
BRISTOL, VIRGINIA



# GRAY'S DAIRY

"Bristol's Leading Dairy"

## CAMEO and COLUMBIA THEATRES

We Wish for You Success and Happiness Through  
the Years to Come

**ROSES 5-10-25c STORE**  
School Supplies our Specialty



Eat at our Luncheonette and Fountain.  
MOST MODERN IN BRISTOL

Best Wishes to the Seniors  
For a Success



**GEORGE W. VANCE**  
COMMISSIONER OF FINANCE

Compliments  
of  
**BRISTOL STEEL & IRON WORKS**

**R. J. MOTTERN**  
Congratulations to Seniors of '42  
Commissioner of Streets and  
Public Property

Compliments of  
**HOME BENEFICIAL LIFE  
INSURANCE CO.**

Compliments of  
**RUTHERFORD FREIGHT LINES,  
Incorporated**  
BRISTOL, TENN.-VA.

The Smart, Well-Dressed Man is Outfitted  
By . . .

**ReMINE-GOBBLE, Inc.**  
PARAMOUNT BUILDING



Compliments of  
**PARAMOUNT AND STATE  
THEATRES**

Courtesy  
of  
**BLEVINS FUNERAL HOME**

Compliments of  
**BRISTOL DOOR & LUMBER CO.**  
Phone 1010

Compliments of  
**UNCLE SAM'S LOAN OFFICE**

Compliments of  
**CHAS. A. SCHIEREN CO.**

*Enjoy Southern Maid Ice Cream*  
"Made in Bristol"  
**SOUTHERN MAID, Inc.**  
Phone 5108      :-      Bristol, Va.

Gibson Electric Ranges and Refrigerators  
GOOD HARDWARE  
**Mitchell-Powers Hardware Co.**  
1880 (Sixty-two Years of Service) 1942

**D. B. RYLAND & CO.**  
—Jewelers—


"It Pays to Buy the Ryland Kind"

**MONCIER'S GROCERY**  
GROCERIES—MEATS  
Corner of Woodlawn and Edgemont  
Free Delivery      :-      Phone 59

**L. R. PETERS**  
(The Friendly Store)  
"Cafeteria No. 2"

Style Steps Out in  
**NEW FORD & MERCURY**  
**STATES MOTOR CO., Inc.**  
Sales & Service



For  
Graduation  
Gifts—See 

## McCHESNEY & LESTER

DIAMONDS, WATCHES, JEWELRY  
Ask About Our Weekly Payment Plan

WON'T YOU HAV-A-TAMPA

The Largest Selling Cigar in the South

**COWAN BROS.**

**SHELBY HILLS CEMETERY**

The Modern and Perpetually Kept  
Memorial Park

Compliments of

**PIGGLY-WIGGLY**

**KING ROGERS**

GROCERIES — MEATS

Phone 33      :-      900 Fifth Street

Learn to RUMBA—LA CONGA  
**Montgomery Dancing Studio**

512 Pennsylvania Avenue

**R**OCKETT  
REALTY  
COMPANY

17 Fifth Street  
Bristol, Tenn.

COMPLIMENTS OF

**PIEDMONT SERVICE STATION**

**SMITH FLORAL CO., Inc.**

714 State St.      :-      Bristol, Tenn.-Va.

"SAY IT WITH FLOWERS"

Phone 523      :-      Member FTD

**BUNTING'S DRUG STORE**

Candies

:-

:-

Soda

Kodaks

:-

Films

and Finishing



# ANNUAL CRAFTSMEN

## *Unusual Year-books*

*The* BUILDING OF A SUPERIOR YEAR-BOOK REQUIRES THE CLOSEST COOPERATION ON THE PART OF THE STAFF, THE PHOTOGRAPHER, THE ENGRAVER AND THE PRINTER. OUR CONNECTIONS AND YEARS OF EXPERIENCE ENABLE US TO RENDER A COMPLETE SERVICE. IF YOU WANT TO PRODUCE AN OUTSTANDING YEAR-BOOK, LET US HELP YOU. OUR EXPERT SERVICE WILL MINIMIZE MANY OF YOUR PUBLICATION PROBLEMS.



THE KING PRINTING CO.  
*Printers • Engravers • Bookbinders*  
BRISTOL, TENNESSEE



AUTOGRAPHS



AUTOGRAPHS



