



CADMEA  
for 1941







# DEER





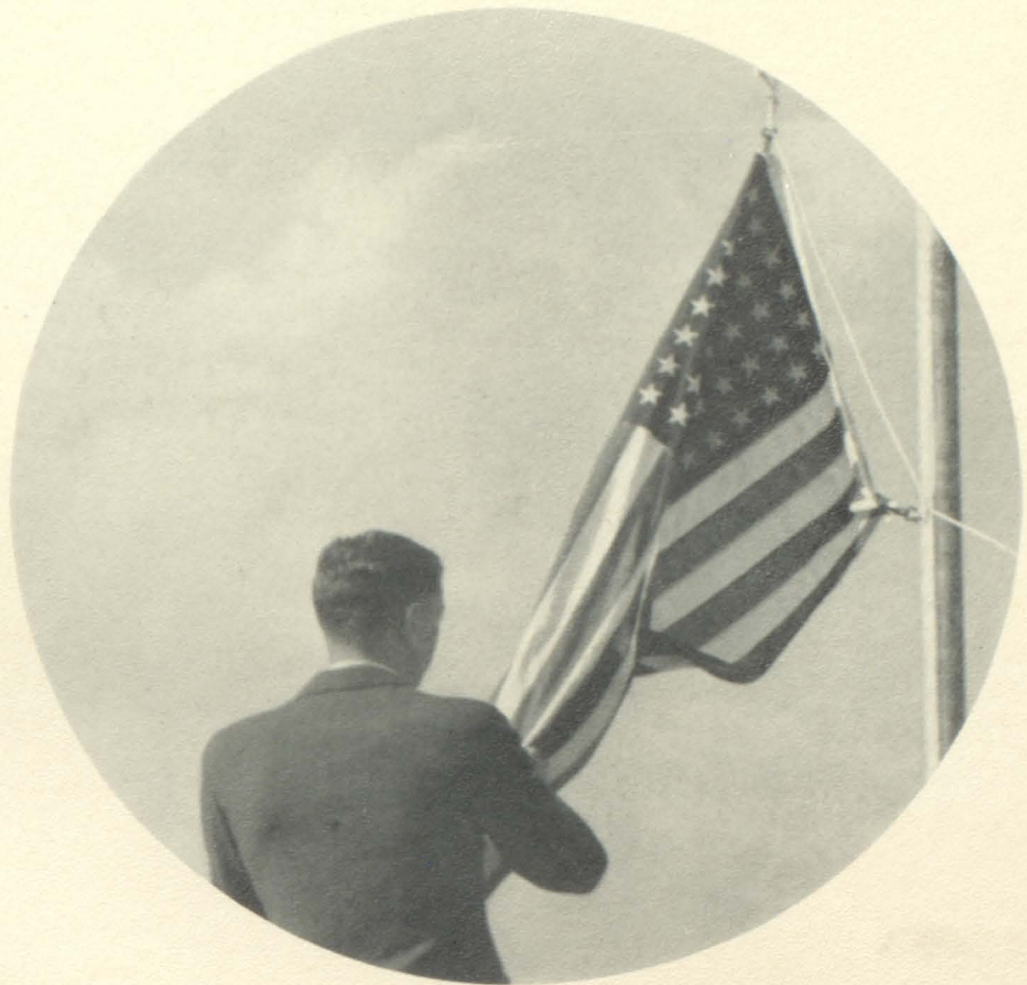


# TEACHER

- Smythe '41





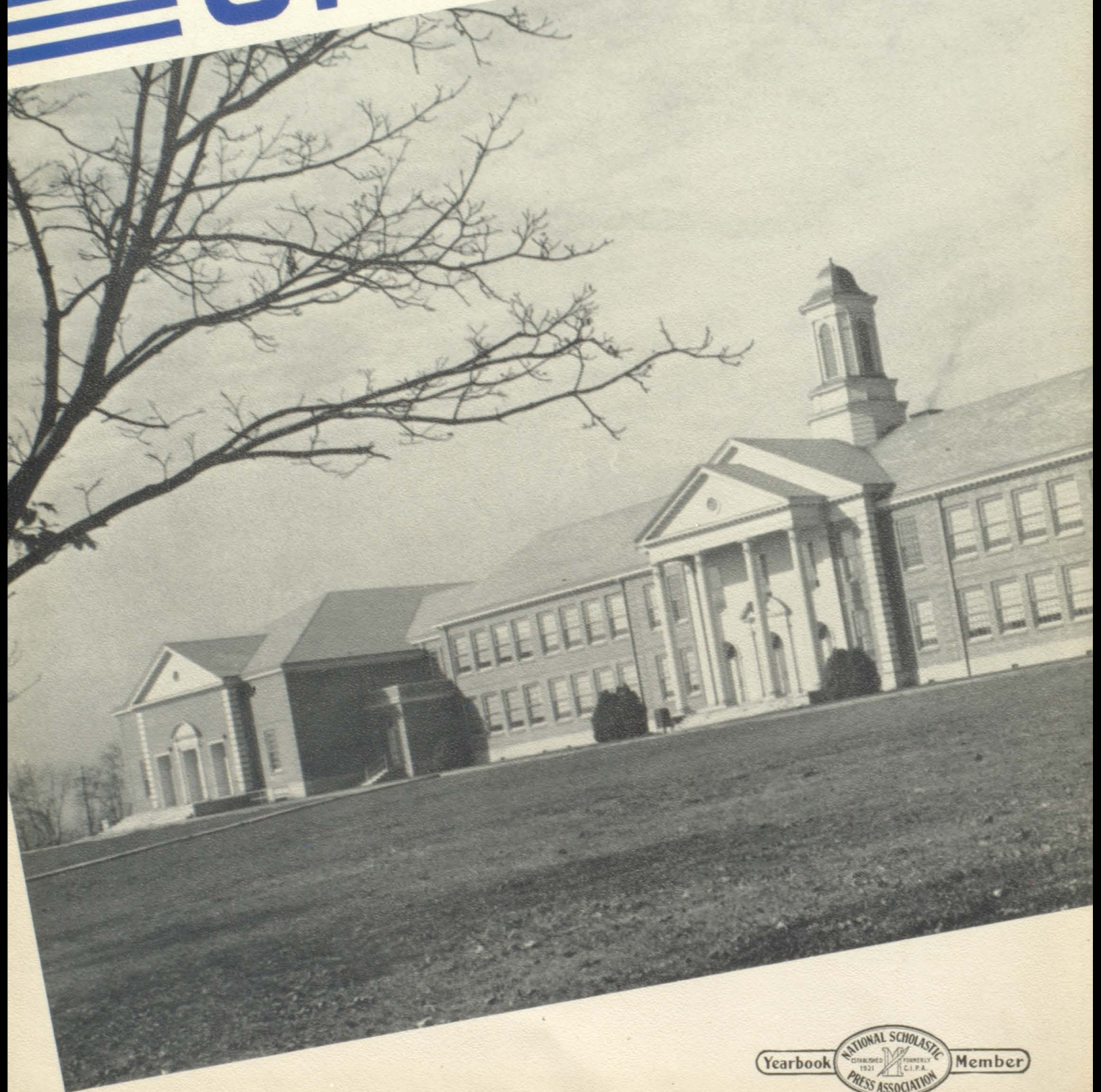


*The Cadmus Club*

*Presents...*

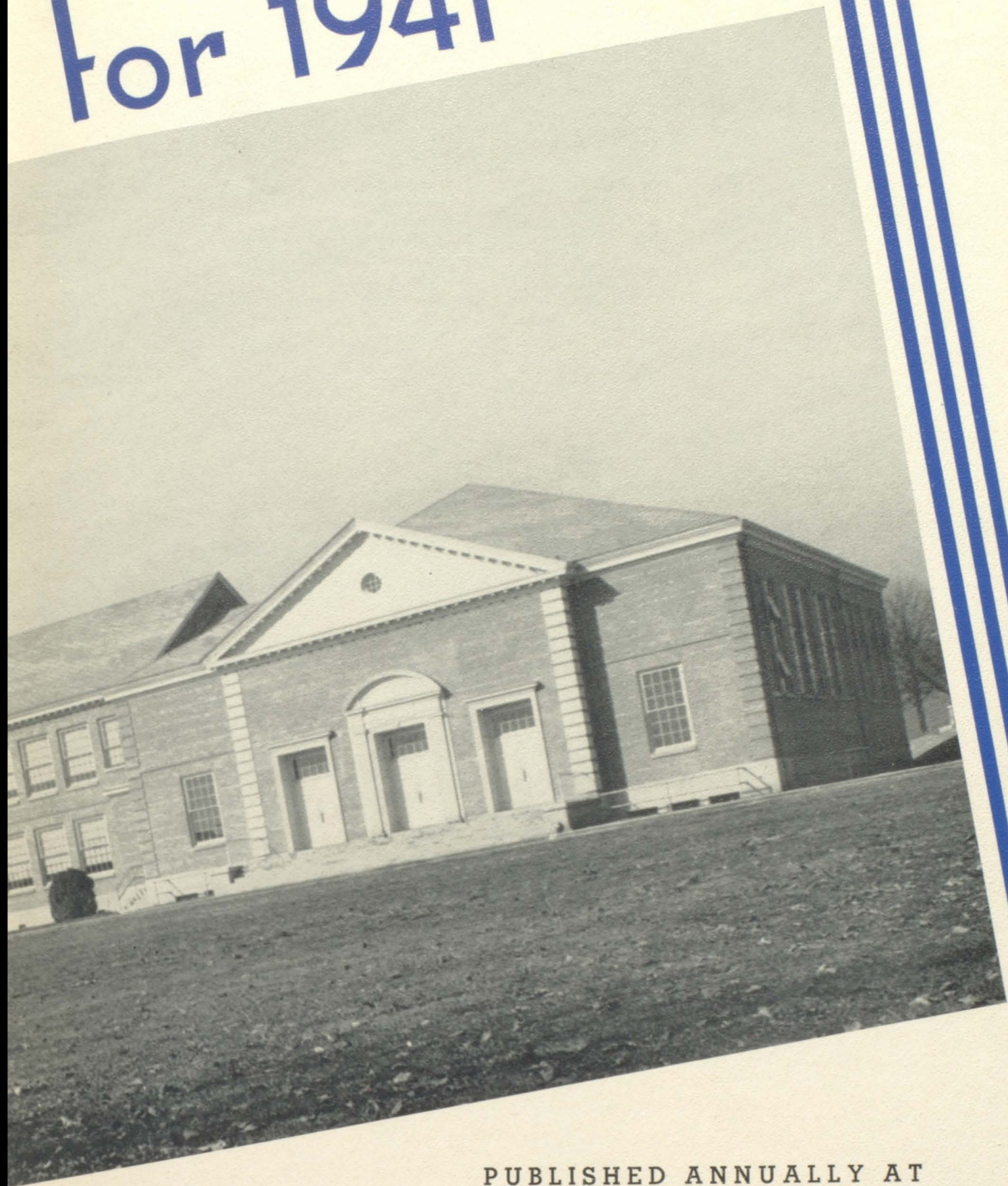


# CADMEA ★





for 1941



PUBLISHED ANNUALLY AT  
BRISTOL TENNESSEE HIGH SCHOOL

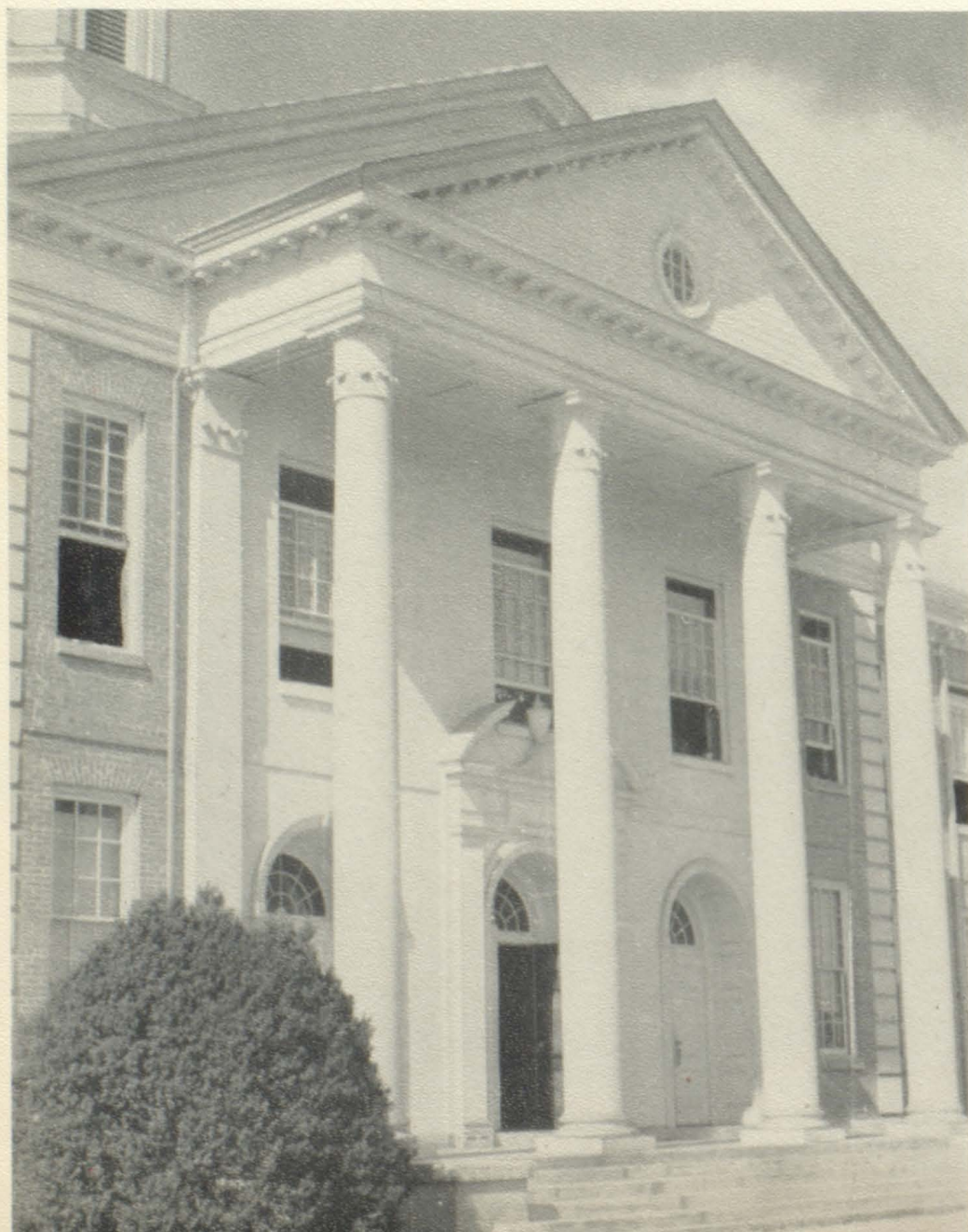


BILLY TURNER ..... Editor  
CHARLES REPASS ..... Business Manager  
JOE COMBS ..... Advertising Manager



# *Our Aim*

... in the CADMEA is to give the Seniors of 1941 a tangible, precise, complete picture of life as we have experienced it at Tennessee High. Between the covers of the CADMEA for 1941, we sincerely hope that the reader will envision those dearest memories of Auld Lang Syne.







## *We Honor*

### **MRS. FRANK W. DeFRIECE**

who through her untiring efforts has made Tennessee High a better place in which to learn. Her work as chairman of the school board has been outstanding, and it is to her that we dedicate the 1941 CADMEA.





*In Memoriam*

ELIZABETH HICKS FERGUSON

1898-1940

A Friend, A Teacher, A Guide





# T HE SCHOOL





# Administration



**JOHN H. ARRANTS, A.B., M. S.**  
SUPERINTENDENT

High School Teacher and Principal at Bledsoe County High School.

High School Teacher at South Pittsburg, Tennessee.

County Superintendent, Meigs County, Tennessee.

City Superintendent, South Pittsburg, Tennessee.

Supervisor of Elementary Schools, State Department of Education.

Teacher of Elementary Education, State Teachers College, Murfreesboro, Tennessee.

City Superintendent, Bristol, Tennessee.



**I. D. EGGERS, B.S., M.S.**  
PRINCIPAL

Principal of Elementary Schools, Johnson County, Tennessee.

Teacher and Assistant Principal of Elkhorn District High School, Switchback, West Virginia.

Teacher at Princeton High School, Princeton, West Virginia.

Assistant Principal of Tennessee High School, Bristol, Tennessee.

Principal of Tennessee High School, Bristol, Tennessee.



**BILLIE BAXTER, A.B.**

HISTORY

Stonewall Jackson, University of Tennessee.

Pet Like: Travel.

Pet Dislike: To lose a basketball game to Kingsport.



**BESS E. BROCE, B.S., A.B.**

ENGLISH

Sullins College, King College, University of Besoncon, George Peabody College, Johnson City State Teachers.

Pet Like: Radio.

Pet Dislike: (None).

**GENEVIEVE R. CALDWELL, B.S., M.A.**

ENGLISH and MATHEMATICS

University of Tennessee, King College.

Pet Like: Bunting's Chocolate Milk.

Pet Dislike: Incorrect English.



**HALLIE CARSON,**

**A.B. and A.B. in L.S.**

LIBRARY

Emory and Henry College, Emory University, University of Michigan.

Pet Like: Red Roses.

Pet Dislike: Smart Alecks.

**MILDRED CHAPMAN**

SECRETARY TO PRINCIPAL

Virginia Intermont College.

Pet Like: Music, blue eyes.

Pet Dislike: Loud noises.



**FRANCES E. COMBE, B.S.**

PHYSICAL EDUCATION, GIRLS

University of Tennessee.

Pet Like: Photography.

Pet Dislike: Long fingernails.

**PEARL WALLACE COWAN**

DIETICIAN

Sullins College, Agnes Scott.

Pet Like: Creamed Potatoes.

Pet Dislike: People who take two straws.



**ANNIE NEELD DRYDEN,**

**A.B., M. A.**

FRENCH, SPANISH, MATHEMATICS

Bryson College, Columbia University, University of Tennessee.

Pet Like: Football games.

Pet Dislike: Biting fingernails.

**EDWARD ESSER, A.B.**

CIVICS AND ASSISTANT COACH

King College.

Pet Like: None.

Pet Dislike: None.



**SARAH FORTUNE, B.S.**

HOME ECONOMICS

Maryville College, University of Tennessee.

Pet Like: Good food.

Pet Dislike: Playing basketball.

**OSBORNE FOUTCH, B.S.**

COMMERCIAL

Tennessee Tech.

Pet Like: Junior Civitans.

Pet Dislike: Short Pencils.



**WALTER GARLAND, B.S.**

INDUSTRIAL ARTS

Johnson City State Teachers.

Pet Like: Fishing and Travel.

Pet Dislike: None.



**GEORGE G. GILLINGHAM,  
A.B., M.S.**

HISTORY, ECONOMICS,  
SOCIOLOGY

Maryville College, University  
of Tennessee.

Pet Like: Economics.

Pet Dislike: Bad weather.

**MARY RUCKER MARNEY,  
B.S.**

MATHEMATICS

Johnson City State Teachers,  
Farmville State Teachers.

Pet Like: Violinists.

Pet Dislike: Blues singers.

**MARGARET O. NININGER,  
A.B., M.A.**

ENGLISH

Virginia Intermont College,  
University of Tennessee,  
Columbia University.

Pet Like: To step on starter  
and have motor "purr".

Pet Dislike: Having to hurry.

**G. MARION SADLER, Jr.,  
A.B., M.A.**

ENGLISH

Duke University.

Pet Like: English Literature.

Pet Dislike: Mathematics.

**ELMER E. SOLOMON, B.S.**

ATHLETIC DIRECTOR, COACH,  
PHYSICAL DIRECTOR OF BOYS

Milligan College, Vanderbilt,  
Johnson City State Teachers,  
Duke University.

Pet Like: Athletics.

Pet Dislike: Athletes who  
break training.

**NEIL H. WRIGHT, B.S.**

BAND AND GLEE CLUB

Vanderbilt, Peabody Col-  
lege.

Pet Like: Classical music.

Pet Dislike: Sour notes.



**MAURINE HAWKINS, A.B.**

TYPING AND ENGLISH

Carson - Newman College,  
University of Tennessee.

Pet Like: Fast typists.

Pet Dislike: People who say  
"Why?"

**MILTON E. MILLER, A.B.**

DIVERSIFIED OCCUPATIONS

Georgetown College (Ky.).

Pet Like: Banana pudding.

Pet Dislike: Lazy people.

**EVERETT L. ROWE, A.B.**

PHYSICS AND MATHEMATICS

Western Kentucky Teachers,  
University of Kentucky.

Pet Like: Fishing.

Pet Dislike: Jitterbug music.

**DELLE SMITH, B.S., M.S.**

BIOLOGY AND CHEMISTRY

University of Tennessee,  
University of Virginia,  
Columbia University,  
Mountain Lake, Virginia  
Biological School.

Pet Like: Horses and Cats.

Pet Dislike: Lack of scientific  
attitude.

**NANCY STERETT, A.B., M.A.**

LATIN

Western Kentucky State  
Teachers, Peabody Col-  
lege.

Pet Like: Chocolate Candy.

Pet Dislike: Chewing gum  
and violent perfume.

**REVELEY OWEN, A.B.**

GEOMETRY AND  
TRIGONOMETRY

Emory and Henry College,  
R. M. W. C., Sullins Col-  
lege, Columbia Univer-  
sity.

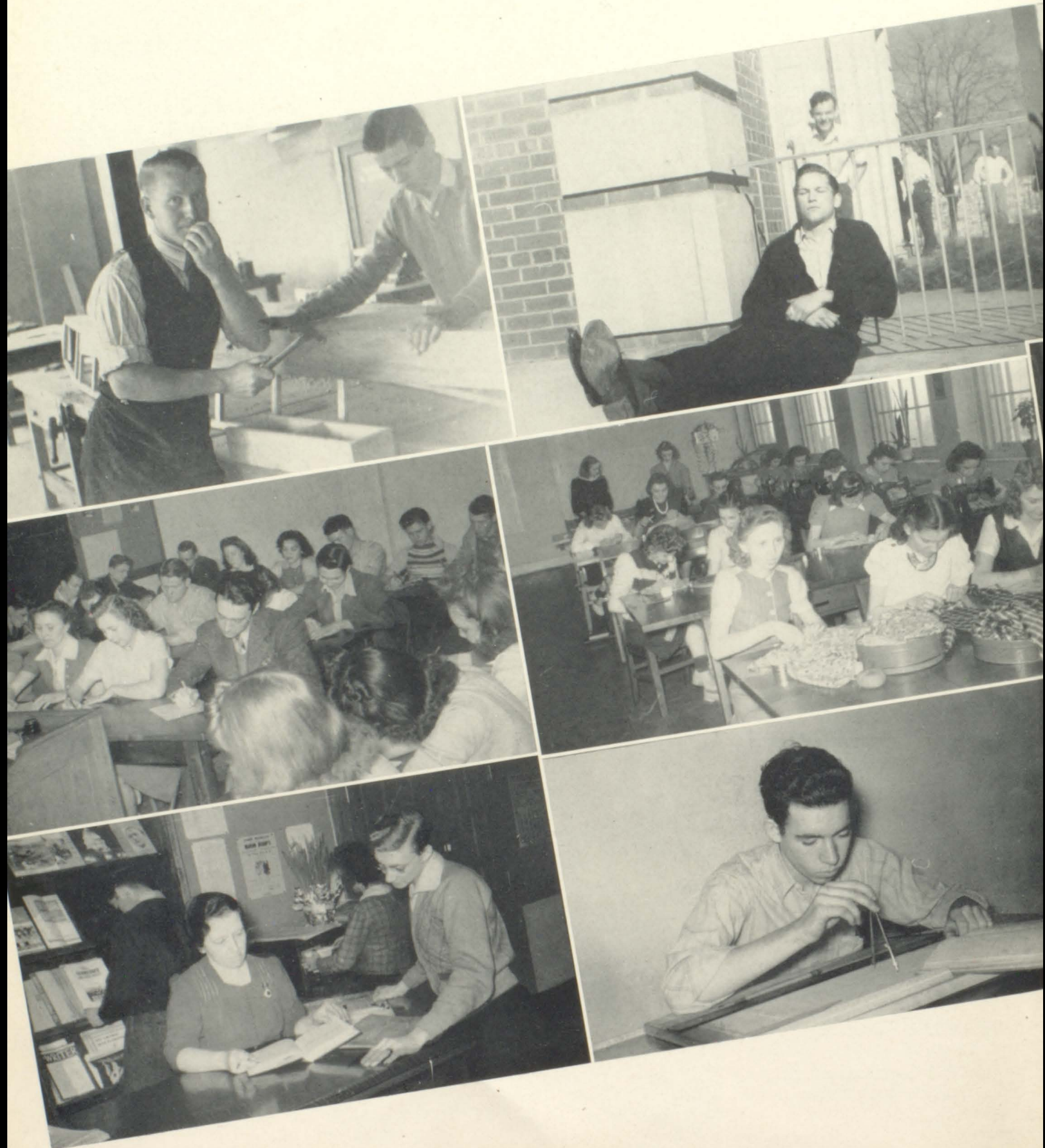
Pet Like: Football boys.

Pet Dislike: Selling tickets.

(Picture not shown).

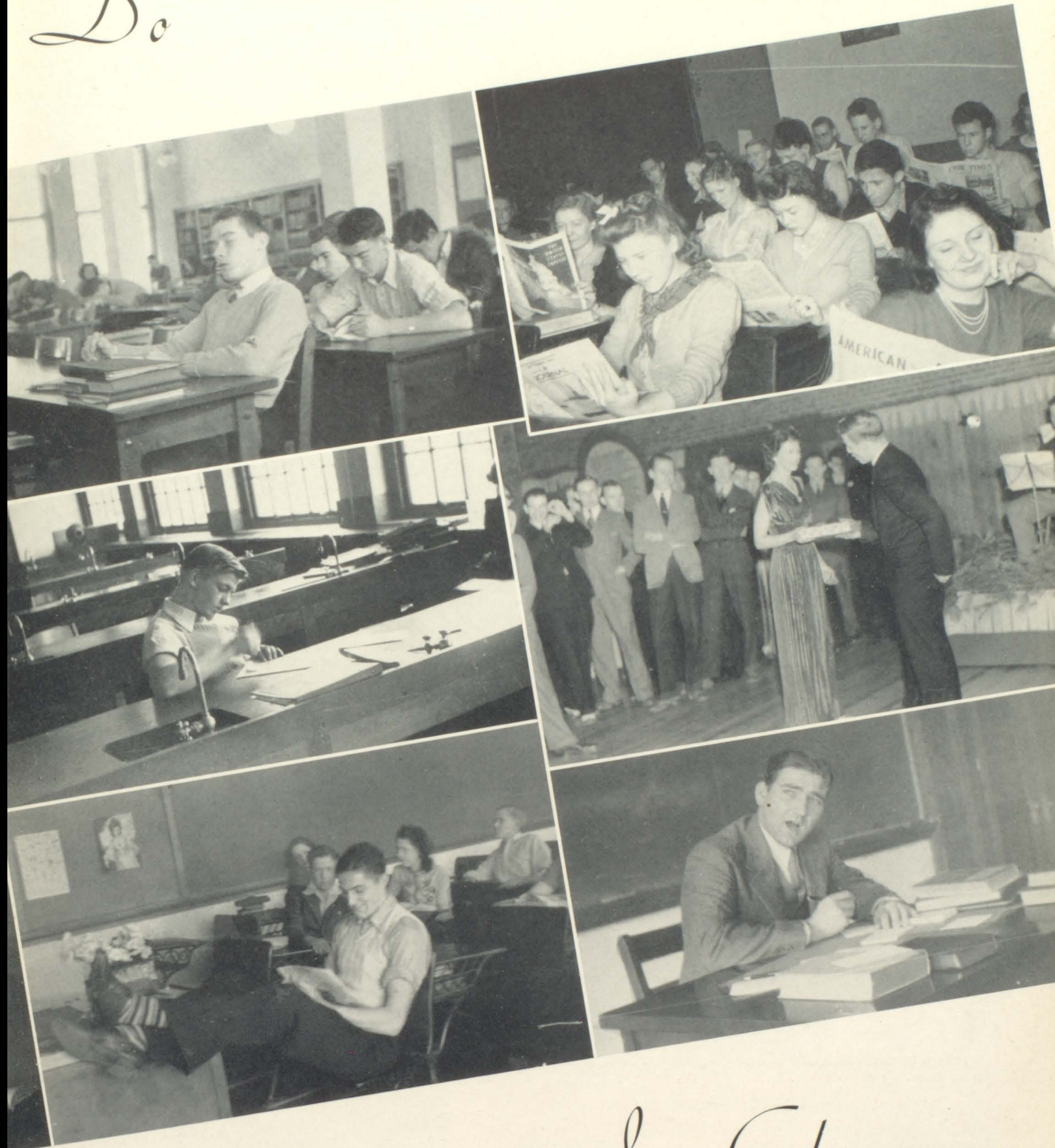


# Here's What We



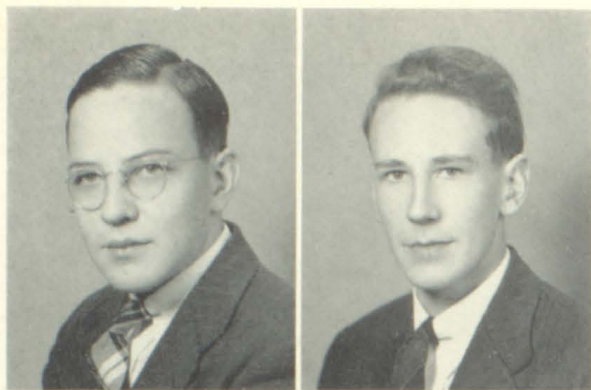


Do



In Classes



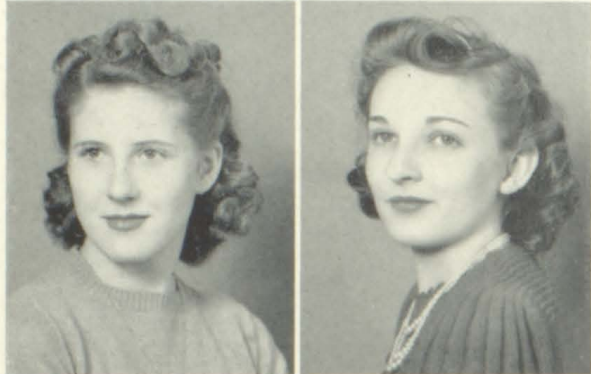


**EDWARD ARNOLD**  
POLYTECHNIC

Boys' Hi-Y '40-'41; Astronomy Club '39-'40; Commercial Club '40-'41; Audubon Society '37-'38; Bible Club '40-'41; French Club '39-'40.

**GORDON CURTIS ARNOLD, JR.**  
STATE

Operetta '37-'39; Astronomy Club '39-'40; Diversified Occupations Club.



**DOROTHY ASHBURNER**  
STATE

Alchemist Club; Home Ec. Club; Transferred from Isaac Litton High School, Nashville, Tenn.

**ANN CATHERINE BANE**  
COMMERCIAL

Civics Club '37; Commercial Club '40-'41; Alchemist Club '40-'41.



**HENRY MCKINNEY BARKER**  
POLYTECHNIC and STATE

Treasurer Student Body '40; Cheerleader '40-'41; Junior Class Play; Junior Civitan Club; Alchemist Club; Astronomy Club; T Club; MAROON & WHITE '39-'41.

**JAMES BARKER**  
POLYTECHNIC

Alchemist Club, President '40; Junior Civitan, President '40, Sergeant-at-Arms '41; MAROON & WHITE; Football '40; Astronomy Club '40-'41.

**JULIA GERTRUDE BAUMGARDNER**  
CLASSICAL

Civics Club '37 Home Ec. Club '38-'41; Girls' Hi-Y '39-'41; CAD-MEA '41; Alchemist Club '40-'41; Glee Club '37-'41; Speech Club '38-'40; Latin Club.

**SAM HAROLD BEARD**  
CLASSICAL

Advertising Manager CADMEA '38; Speech Club, Pres. '38, Treas. '37; Pres. Astronomy Club '39.

**ANN ALLEN BIRDWELL**  
POLYTECHNIC

Glee Club '36-'41; Bible Club '40-'41; Home Ec. '41; Commercial '39-'40.

**ALMA LEE BIXLER**  
GENERAL

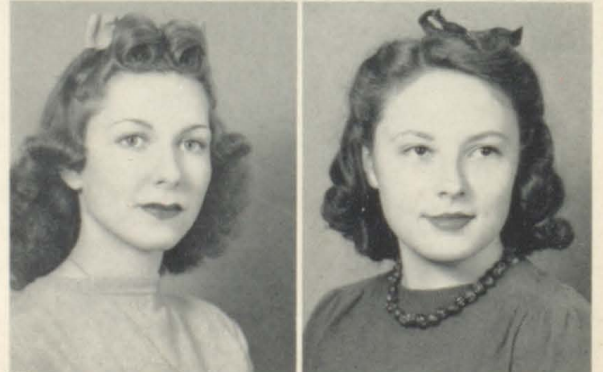
Home Ec. Club; Transferred from Southeastern High School, Detroit, Mich.

**JANE REEVE BOOHER**  
COMMERCIAL

Commercial Club; Audubon Club; Glee Club '38-'39; Dramatics Club.

**JULIA ERIS BRADDOCK**  
STATE

Speech Club '37-'40; Glee Club '37-'40; Dramatics Club '37-'41; Intramural Council '40, Secretary; Girls' Athletic Club '41; Alchemist Club '40-'41.





**CHARLES SCOTT BRAY**

STATE

Civics Club '37-'38, President '38; Alchemist Club '39-'40; French Club '39; Speech Club '39-'40; Audubon Club '38-'39.

**JAMES JACKSON BREEDING**

CLASSICAL

President Civics Club '36; Audubon Club '38; Alchemist Club '39; Football '37-'40; Junior V. Basket-ball '39; Junior Civitan Club '39-'41, Sergeant-at-Arms '39; Treasurer '40-'41.

**WILMA CHARLOTTE BREEDLOVE**

CLASSICAL and COMMERCIAL

Cheerleader '40-'41; Girls' Hi-Y, Treasurer; Glee Club; Home Ec. Club; Dramatics Club.

**PEGGY LUCILLE BROGLIN**

COMMERCIAL

Commercial Club '40-'41; Glee Club '37; Civics Club '37; Home Ec. Club '38-'40; Audubon Society '38.

**WILLIAM KARL BROWN**

STATE

Civics Club '37; D. O. Club '40-'41.

**CORINNE ALICE BUTTERWORTH**

CLASSICAL

Home Ec. Club '37-'38; Glee Club '37-'38; Band '38-'41; Speech Club '38-'41; French Club '39-'41; Secretary and Vice-President; Girls' Hi-Y '40-'41.



**EMALEE CALDWELL**

CLASSICAL

Queen Sophomore and Junior Classes; Speech Club, Treasurer '39-'40; Glee Club '39-'41; Hi-Y '39-'41; French Club, President; Band Sponsor '40-'41; Junior Play; Secretary Junior Red Cross '39-'41.

**POLLIE CARNAHAN**

POLYTECHNIC

Glee Club '39; Alchemist Club '40-'41; Girls' Hi-Y '40-'41.

**VIVIAN CARRIER**

JUNIOR

**JIMMY CASS**

GENERAL

Boys' Hi-Y '40-'41; D. O. Club.

**DOUGLAS COOKMAN CATHER**

CLASSICAL and POLYTECHNIC

Hi-Y '40-'41; Latin Club '39-'40; D. O. '40-'41; Civics Club '37; Alchemist Club '39.

**WILLIAM BENSON CATHER, JR.**

STATE

Bible Club, President '40-'41; Glee Club '37-'41; Baseball '36; Basket-ball Junior Varsity '37.





**DOROTHEIA LUCILLE DECK**  
STATE

Dramatics Club, '39-'40; Glee Club '37-'41; Commercial Club, '40-'41; Civics Club '38; Speech Club '40; French Club '39-'41.

**ALTA BEATRICE DENTON**  
STATE

Home Ec. Club '40; Audubon Club '38; Glee Club '36-'37; D. O. '40-'41; French Club '39-'40; Civics Club '37.

**CLARENCE EUGENE DISHNER**  
GENERAL

Alchemist Club; Civics Club; Audubon Club.

**MARY FLORENCE DOVE**  
STATE

D. O. '40-'41; Civics Club '38.

**JEAN PORTER DUTTON**  
POLYTECHNIC

Glee Club '37-'41; Speech Club '37-'38; Dramatics Club; French Club; Alchemist Club; Home Ec. Club; Hi-Y '40-'41, Treas. '41; Operetta '40-'41.

**ELEANOR FRANCIS EPPERSON**  
CLASSICAL

CADMEA '40-'41; Glee Club '38; Dramatics Club '39; V.-Pres. Soph. Class '39; Girls' Hi-Y '41; Operetta '37-'41; Cheerleader '39-'41; T Club '39-'41; Speech Club '39-'40; French Club '39-'41; Alchemist Club '40-'41; MAROON & WHITE '39-'40.

**DUKE DAVID COFFEY**  
POLYTECHNIC and STATE

President, Vice-President Senior Class; President, Vice-President Student Body; President Alchemist Club; President Astronomy Club; Vice-President Junior Class; Band '36-'37; Football '37-'40; Basket-ball '40; Hi-Y '40-'41; Latin Club '41; Kru Klub '41.

**JOSEPH LESLIE COMBS, JR.**  
POLYTECHNIC

CADMEA '40-'41; Vice-President Sub-Freshman Class; President Civics Club '38; Astronomy Club '38-'41; Alchemist Club '40-'41; Latin Club '39-'40; President Junior Civitan Club '39-'41.

**VIRGINIA ESTELLE COPPINGER**  
STATE

Girls' Athletic Club; Girls' Hi-Y; Dramatics Club; Secretary Senior Class; Alchemist Club; Home Ec. Club.

**HERBERT JACKSON DAVIDSON**  
GENERAL

Alchemist Club '39; Astronomy Club '39-'40; Civics Club '37; French Club '38-'41.

**HELEN DUTTON DAY**  
STATE

Glee Club '37-'41; Speech Club '37-'39; Dramatics Club '37-'39; Home Ec. Club '38-'39; English Club '37-'38; Civics Club '38; D. O. '40-'41.

**BETTY DEBORD**  
GENERAL

Transferred from Ashland, Kentucky.





**ROY LEE FAIDLEY**  
COMMERCIAL and MANUAL ARTS

Civics Club '36-'37; Commercial Club '36, '38; Kru Klub '39, '41; Boys' Hi-Y '39, '41; Sergeant-at-Arms '40; President '40-'41; Sergeant-at-Arms Senior Class '41; Track '39-'40; Varsity Football '37-'40; Junior Varsity Basket-ball '38, '40.

**LYDIA FARRIS**  
STATE

Girls' Hi-Y, Secretary '41; French Club '39; Alchemist Club '40; Glee Club '37.

**NAOMA EUFAUNE FAULKNER**  
CLASSICAL and STATE

Glee Club '36-'38; French Club '39-'41; Alchemist Club '40-'41; T Club '38-'41; Girls' Athletic Club '40-'41.

**ALLEN THOMAS FELTY**  
CLASSICAL and STATE

Football '38-'40; Basket-ball Manager '41; Alchemist Club; Basket-ball '39; Audubon Society '37; Boys' Hi-Y '40-'41; T Club '40; Kru Klub '40; Commercial Club '37.

**BETSY FERGUSON**  
STATE

CADMEA '40-'41; Treasurer, Sergeant-at-Arms; Speech Club; President Home Ec. Club; President Girls' Athletic Club; Secretary Girls' Hi-Y; Secretary Students' Council '40-'41; Tennis Team; Captain Junior Basket-ball Team; President, Secretary French Club; Intramural Manager '40-'41; T Club; Dramatics Club.

**ERNEST MOODY FISHER**  
CLASSICAL and COMMERCIAL

Operetta '39-'40; Boys' Hi-Y '40-'41; Glee Club '39-'40; Commercial Club '40-'41.



**BILLY FLEMING**  
STATE

Band '37-'41; Junior Civitan Club '40-'41; Junior Varsity Basket-ball '38; Dramatics Club '40.

**GEORGE ALLEN FLETCHER**  
CLASSICAL

Alchemist Club; French Club, Vice-President.

**JAMES S. FRANKLIN**  
GENERAL

Alchemist Club; Civics Club.

**ERNESTINE GARLAND**  
COMMERCIAL

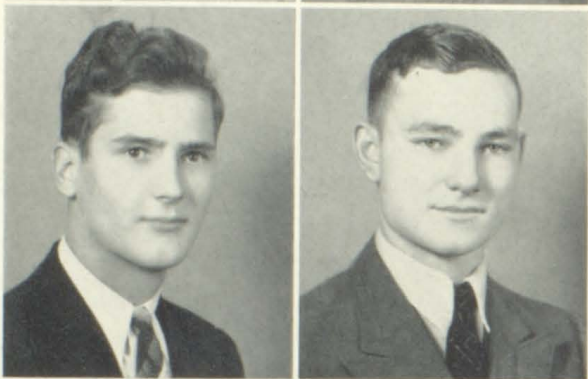
**EDITH GIESLER**  
COMMERCIAL

Commercial Club '40; Civics Club; Audubon Club '39.

**ARTHUR LEE GILLEY**  
POLYTECHNIC

Football '39-'40; Kru Klub '40-'41; Sargeant-at-Arms, Senior Class; Vice-President Boys' Hi-Y '41.





**WILLIE DAVIS HYDER**  
STATE

Athletic Club.

**MARGARET JENKINS**  
COMMERCIAL

Home Ec. Club.

**BASCOM JOHNSON**  
CLASSICAL and POLYTECHNIC

**NANCY JANE JOHNSTON**  
CLASSICAL

MAROON & WHITE '40-'41; Speech Club '39-'40; Dramatics '39-'40; Glee Club '40; Latin Club '39-'41; Alchemist Club '40-'41; Junior Red Cross '40-'41; Girls' Hi-Y '40-'41.

**DONNA RUTH KESNER**  
STATE

Glee Club; Commercial Club.

**BILLY N. KESTNER**  
POLYTECHNIC and STATE

Debating Club '35-'36; Vice-President Alchemist Club '39; MAROON & WHITE '39-'41; Boys' Hi-Y '40-'41; Astronomy Club '40-'41.

**DOROTHY GRIMES**  
STATE

Dramatics Club; Glee Club; Operetta.

**DORIS HAGEY**  
CLASSICAL

French Club '39-'41; Vice-President, Girls' Hi-Y '41; CADMEA '41; Spanish Club; Alchemist Club '41.

**O. D. HAMRICK, JR.**

Cheerleader '40; Junior Civitan Club.

**EUGENE LEE HARKLEROAD**  
COMMERCIAL and STATE

Civics Club '38; Audubon Society '38; Commercial Club '39-'41; Football '38-'39; Football Manager '40; Boys' Hi-Y '40-'41; Alchemist Club.

**CHARLES ROY HARRIS**  
STATE

Audubon Society '38-'39; Alchemist Club '39-'40; Junior Civitan Club '40-'41; Basket-ball '39-'41.

**ELIZABETH ANNE HARROP**  
CLASSICAL

CADMEA '40-'41; Glee Club '40-'41; Hi-Y '40-'41; Dramatics Club '39-'41; Alchemist Club '40-'41.





**ALBERT DEWEY KING, JR.**  
CLASSICAL and STATE

President Freshman Class; Vice-President Sophomore Class; Managing Editor MAROON AND WHITE '39-'40; Editor '40-'41; All Students Club '39-'41; Junior Class Play '39.

**NANCY JANE KING**  
CLASSICAL

Secretary Sub-Freshmen '37; Secretary Freshmen '38; Secretary Junior Class '39; Speech Club '36-'40, Secretary '40; Dramatics Club '38-'41; Band '37-'41; Alchemist Club '40-'41; Latin Club '39-'41; T Club '38-'41; MAROON AND WHITE '39-'41.

**GILBERT KYLE**  
GENERAL

Captain Football; Boys' Hi-Y; Vice-President Senior Class; Kru Klub.

**REBECCA LISANBY**  
CLASSICAL

Hi-Y '39-'40; Vice-President '40; Treasurer Junior Class; Treasurer Senior Class; Band Sponsor; Secretary Latin Club '39-'40; Assistant Manager of Intramural Council '39; Junior Class Play '39.

**FAY LONG**  
GENERAL

Glee Club '37.

**KATHRYN IRENE MARTIN**  
COMMERCIAL

Commercial Club; Junior Class Play; Operetta '41.



**SAM WOODS MARTIN**  
GENERAL

**DAVID WAUGH MASENGILL**  
CLASSICAL

Vice-President Freshman Class '38; Civics Club '38; Dramatics Club '38-'39; Band '38-'41; Latin Club '39-'40; MAROON AND WHITE '39-'41; Junior Civitan Club '39-'41; President '39; Vice-President '40; T Club '39-'40; Junior Class Play '39; President Junior Class '40; Alchemist Club '40, President '41; All-Students' Council '38-'41.

**MURRELL MAE MASSEY**  
COMMERCIAL

Glee Club '36-'37; Civics Club '37-'38; Commercial Club '39-'41; Girls' Athletic Club '40-'41.

**ROBERT LEWIS MAUK**  
POLYTECHNIC

Vice-President, Astronomy Club.

**RUTH MILBURN**  
STATE

Home Ec. Club; Alchemist Club; Bible Club; Dramatics Club.

**EDNA KATE MILLARD**  
COMMERCIAL

Glee Club '39.







**BEN ROBERTS McEWEN**  
POLYTECHNIC

Alchemist Club; Astronomy Club; Junior Civitan Club '40; Band.

**CHARLES MATTHEW McEWEN, JR.**  
CLASSICAL and POLYTECHNIC

Speech Club Treasurer '38, Vice-President '39, President '40, Treasurer '41; Astronomy Club '38; Band '37-'41; French Club '39-'41.

**WILLIAM F. MacMILLAN**  
CLASSICAL

Alchemist Club '39-'40; Speech Club '40; Astronomy '39-'40; Operetta '40; Junior Play '39; Latin Club '40.

**CHARLES QUESINBURY McNEW**  
CLASSICAL and POLYTECHNIC

Hi-Y; Band; French Club; Astronomy Club.

**STANLEY McNEW**  
STATE

**MARY ALICE NETHERLAND**  
COMMERCIAL

Glee Club '37-'41; Dramatics Club '37-'38; Speech Club '38-'39; Girls' Hi-Y '40-'41; D. O. '40-'41.

**WILLIAM PINK MITCHELL**  
POLYTECHNIC

Civics Club '37; Speech Club; French Club.

**GORDON COWAN MONTGOMERY**  
STATE

Operetta '38-'39.

**MARY KATHARINE MORGAN**  
STATE

Latin Club; Alchemist Club; Girls' Hi-Y, Volley-ball.

**KATHERINE ALICE MORTON**  
COMMERCIAL

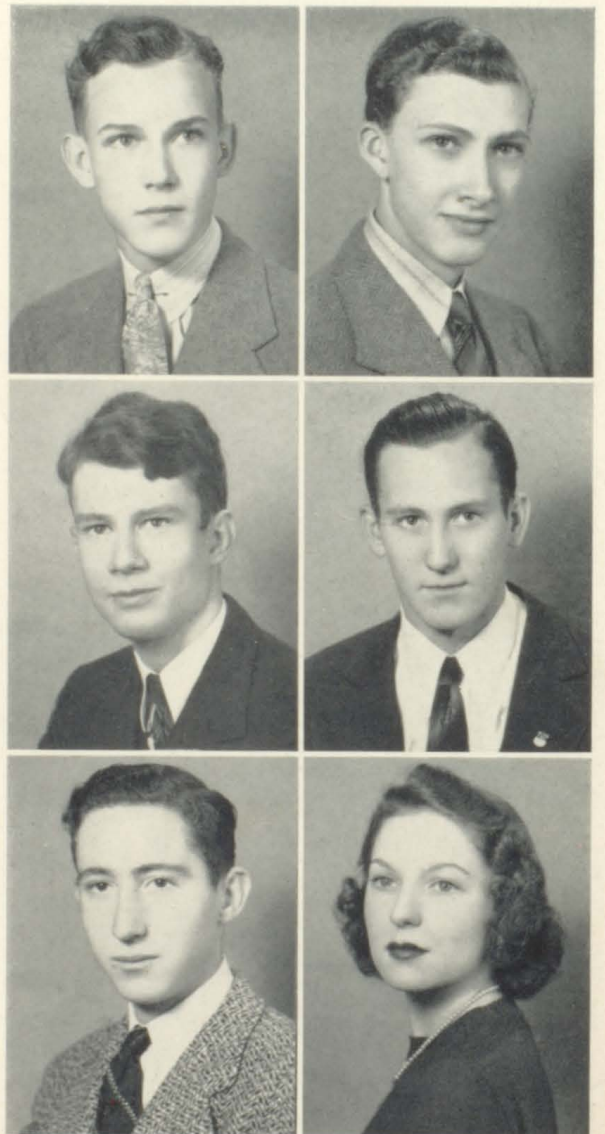
Civics Club '37-'38; Audubon Club '38-'39; Commercial Club '39-'41; Athletic Club '40-'41; Girls' Hi-Y '40-'41.

**MILDRED McCARY**  
POLYTECHNIC

Intramural Council; Audubon Club; Volley-ball.

**EVELYN LUCILLE McCLELLAN**  
CLASSICAL

Latin Club '39-'41; Girls' Hi-Y '40-'41; Intramural Council '37-'40; Athletic Club '40-'41; Home Ec. Club '38-'39.





**EDNA ELAINE OWEN**  
STATE

Glee Club '40-'41; All Students' Council '40-'41; Intramural Council '40; Vice-President Athletic Club '41; French Club.

**RALPH HERBERT PEARMAN**  
GENERAL

Boys' Hi-Y '40-'41.

**CHARLES BARNETTE PETERS, JR.**  
CLASSICAL, POLYTECHNIC, and COMMERCIAL

President Freshman Class; Secretary Sophomore Class; Junior Civitan Club; Alchemist Club; Vice-President Junior Class; Junior Class Play '39; Commercial Club '40; Astronomy Club '40; Audubon Club '37; President Sophomore Class '38.

**HERBERT PETERS**  
POLYTECHNIC

Junior Civitan Club; Cheerleader; Speech Club; Dramatics Club.

**NANCY ELIZABETH PYLE**  
CLASSICAL and STATE

CADMEA '40-'41; Glee Club '37-'40; Speech Club '39-'40; Home Ec. Club '39-'41; Alchemist Club '40-'41; Dramatics Club '41; Junior Class Play '40; Latin Club.

**FRANKLYN RAMSEY**  
CLASSICAL

Audubon Club; Glee Club '37-'38; Civics Club '38-'39; Commercial Club '39-'40; Operetta '37-'38.



**CHARLES SAMUEL REPASS**  
CLASSICAL and POLYTECHNIC

Audubon Club '39; CADMEA '40-'41; French Club '39-'41, President '39, Vice-President '40; Astronomy Club '39-'41; Boys' Hi-Y Treasurer, '40-'41, President '41; Alchemist Club '40-'41, Vice-President '41.

**TOM RILEY**  
STATE

Football '36-'39; T Club '38-'40; Kru Klub '39, Treasurer '39; Civics Club '36.

**MARTHA KATHERINE ROBERTSON**  
CLASSICAL

Glee Club '37-'41; Orchestra '38-'41; French Club '39-'41; Dramatics Club '40.

**CRAIG MIDDLETON ROCKETT**  
CLASSICAL

Speech Club '37-'41, Vice-President '41; Latin Club '39-'41; French Club '40-'41; MAROON AND WHITE '38-'41; Band '39-'41; Astronomy Club '40-'41.

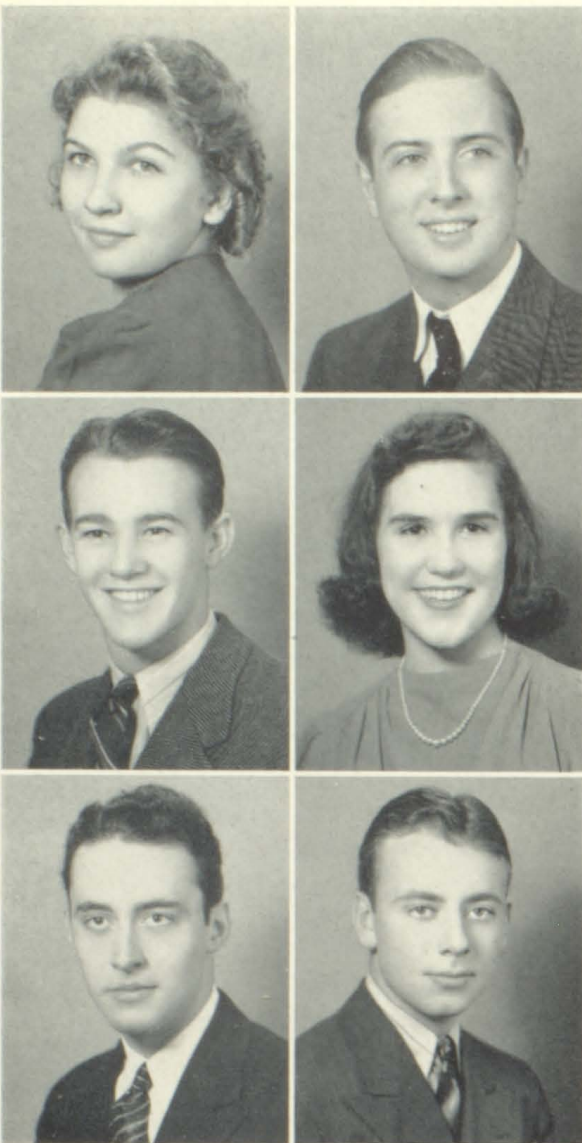
**WILLIAM H. SAYLES**  
CLASSICAL, STATE, and POLYTECHNIC

Audubon Club '39; Civics Club; French Club '39-'41; Alchemist Club '40-'41; Astronomy Club '38-'39; Basket-ball '39-'41; Boys' Hi-Y '39-'41, Secretary '40.

**JOSEPH EARL SHUPE**  
POLYTECHNIC and STATE

French Club; Alchemist Club; Boys' Hi-Y.





**LILLIAN SLAGLE**  
COMMERCIAL

Civics Club '37-'38; Audubon Club '38-'39; Alchemist Club '39-'40.

**WARREN LEE SLAGLE**  
CLASSICAL, POLYTECHNIC and STATE

CADMEA '40-'41; Band '37-'41; Astronomy Club '39-'40; French Club '39-'41; T Club '40-'41; Junior Class Play '39; Operetta '40; Junior Varsity '37-'38; Orchestra '39-'40.

**KARL THOMAS SMITH**  
STATE

CADMEA '40-'41 President Senior Class '41; Vice-President Student Council '41; President Junior Class '40; Treasurer Sophomore '38; Varsity Football '38-'40; Varsity Basket-ball '38-'41; T Club '38-'41; Commercial Club '40; French Club '39; Tennis Team '40-'41; Operetta '41; D. O. '40-'41.

**LUCILLE ROBERTS SMITH**  
CLASSICAL

French Club '39-'40; Dramatics Club '38-'39; Glee Club '37-'38; Operetta '38; Spanish Club '41.

**XAN RHEA SMYTHE**  
STATE

President D. O. Club '40-'41.

**CONLEY HALE SNOW**  
POLYTECHNIC

Civics Club '37; French '39-'40; Boys' Hi-Y '40-'41; Operetta '39.

**ROBERT SOUTHERN SOLOMON**

CLASSICAL, POLYTECHNIC and STATE

CADMEA '40-'41; Junior Civitan Club '39-'41; Band '37-'40, Twirling Major '40-'41; Basket-ball (Varsity) '40-'41; French Club '39-'41; Audubon Club '38-'39; Alchemist Club '39-'40; Civics Club '37-'38.

**FLORA ALVA SPICER**  
CLASSICAL

CADMEA '40-'41; Glee Club '37-'38; Latin Club '39-'41; Alchemist Club '38; Home Ec. Club '39; President Commercial Club '40; Secretary Senior Class '40, Treasurer '41; Girls' Hi-Y '40-'41.

**EARNEST LEE STOFFEL**  
CLASSICAL, POLYTECHNIC and STATE

Band '35-'41; Student Director '40-'41; MAROON AND WHITE '39-'41; Latin Club '39-'41; Speech Club President '41; Astronomy Club '38-'41; Alchemist Club; Audubon Club.

**KATHERINE EMERSON SWINEY**  
STATE

Glee Club; Girls' Hi-Y '40-'41.

**MARY ELIZABETH TALBERT**  
STATE

Glee Club '36-'37; Home Ec. Club '39; Commercial Club '39; D. O. '40-'41.

**ELIZABETH SUE TATE**  
COMMERCIAL and STATE

Transferred to B. T. H. S. 1938; Cheerleader '40-'41; Commercial Club '39; French Club '40-'41; Dramatics Club '39.





**LILLIAN CATHERINE THOMAS**  
COMMERCIAL

Civics Club '37-'38; Audubon Club '38; Glee Club '40-'41; Commercial Club '39-'40; Vice-President '40; Girls' Hi-Y '40-'41; Girls' Athletic Club '40-'41.

**FRANK THOMAS**  
STATE

Hi-Y; Basket-ball; D. O.

**MARY FRANCES THOMPSON**  
CLASSICAL

Girls' Hi-Y '39-'41, President '40; Glee Club '38-'41; Dramatics Club '39; Latin Club '39-'41; All Students' Council '40; Intramural Council '39; T Club '39; MAROON AND WHITE '39-'41.

**LUCY TOWNSEND**  
STATE

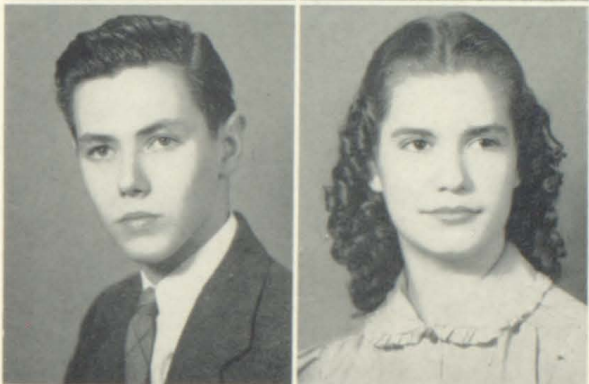
Home Ec. Club '40-'41; Latin Club '40-'41; Alchemist Club '40-'41; Glee Club '40-'41; Operetta '41; Girls' Hi-Y '40-'41.

**WILLIAM EDWARD TURNER**  
CLASSICAL, POLYTECHNIC and STATE

CADMEA '39-'41, Editor '41; Band '35-'41; First Chair Trombonist '40-'41; Speech Club '37-'40; Junior Civitan Club '39-'41, President '40; Alchemist Club '40-'41; French Club '39-'41; Astronomy Club '38-'41.

**JUNE WAMPLER**  
STATE

MAROON AND WHITE '40-'41; Commercial Club '39-'41; Home Ec. Club '40-'41; Bible Club '40-'41.



**ALICE LOUISE WATSON**  
STATE

Glee Club '36-'39; Latin Club '39-'40; D. O. '40-'41.

**ROY WEBB**  
STATE

Diversified Occupations Club.

**ELLEN KING WHITAKER**  
STATE

Dramatics Club '36-'40; Speech Club '39-'40; Alchemist Club '39-'40; Audubon Club '39; Glee Club '36-'41; Home Ec. Club, President '40; Junior Red Cross '39-'40; Commercial Club '39-'40; Girls' Hi-Y '40-'41; All Students' Council '40.

**JOHN WHITAKER**  
STATE

Industrial Arts.

**FLOYD A. (BUDDY) WILLIAMS, JR.**  
CLASSICAL and STATE

CADMEA '41; Speech Club, President '40; Dramatics Club '40; Civics Club '38; Latin Club '39-'41; Treasurer '39-'40; Operetta '40; All Students' Council '40.

**JIMMY WILSON**  
STATE

CADMEA '41; President Freshman Class '35-'36; Cheerleader '38-'40; T Club '38-'40; Vice-President Sophomore Class '38; President All Students' Council '40; Vice-President Boys' Hi-Y '40.





**MARY FRANCES WINGARD**  
STATE

Civics Club '37-'38; Audubon Club '38-'39; Glee Club '40-'41.

**JANE ELIZABETH WOLFORD**  
CLASSICAL and STATE

Girls' Hi-Y '39-'41; French Club '39-'41; Secretary '39; Glee Club '36-'38; Speech Club '37-'38.

**BASIL IRWIN WYATT**  
STATE

Alchemist Club '39-'40; Hi-Y '39-'41.

**GORDON ZORY**  
STATE

Operetta '36; Commercial Club, President '40; Operetta '40; Speech Club '41; Junior Play '39.

**SENIOR CLASS OFFICERS**

FALL

DUKE COFFEY ..... President  
GILBERT KYLE ..... Vice-President  
ALVA SPICER ..... Secretary  
REBECCA LISANBY ..... Treasurer  
ARTHUR GILLEY ..... Sergeant-at-Arms

SPRING

KARL SMITH  
DUKE COFFEY  
VIRGINIA COPPINGER  
ALVA SPICER  
ROY FAIDLEY

**COLORS:** Blue and Pink.

**FLOWER:** Rose.

**MOTTO:** "Trust Thyself: Every Heart Vibrates to That Iron String."

**CLASS POEM**

Our high school days are ended now—  
The sounds of locker door and bell,  
Of classrooms, music, games, and plays,  
Of all those things we know so well,  
Are gone; but in our hearts remains  
A spirit—loyal, steadfast, true—  
The spirit of the Vikings brave,  
Who boldly conquered fear and blight,  
Who never let their courage fail,

But ever embattled for the right.  
We, like them, must never lose  
The sight of greater things that stay  
Through tempest, peace, or feverish strife,  
When other things have passed away.  
So let us ever hold most dear  
Our courage and our will to do;  
And carry with us as we leave  
That Viking spirit ever true.

—MARY FRANCES THOMPSON.



# Last Will and Testament of the Class of '41

We, the Seniors of Tennessee High School of the city of Bristol of the county of Sullivan of the State of Tennessee in the United States of America in the year of our Lord nineteen hundred and forty-one, being of good health and sound mind, do hereby declare this to be our last will and testament in the form following:

FIRST: To our kind faculty we leave our deepest gratitude for your aid and your patience as we have traveled the long road of education.

SECOND: To our beloved sponsors, Miss Baxter, Miss Owen, Mr. Sadler, and Mr. Gillingham, our sincerest appreciation for the help you have given us during our many trials and tribulations as Seniors.

THIRD: To the Freshmen and Sophomores, we leave all the wisdom that we have acquired in our four years.

FOURTH: To the Juniors, our personal bequeaths:

We, Emalee Caldwell, Jean Dutton, and Nancy Johnston will our talent to exercise our vocal chords to Anita Smith and Doris Jane Leonard. I, Dorothy Ashburner, bequeath all my heart to Lon Lilley hoping he will treat it kindly. I, Karl Smith, bequeath my smooth line that wins the college girls to Stuart Ingram. I, Herbie Peters, will my secret way of slipping out of school to Jack Harris, hoping he can get away with as much as I have. I, Corinne Butterworth, leave my ability to get my man and hold him to Geraldine Stansberry. We, John Whitaker and Allen Felty, will our alarm clocks to Warren Phillippi so he won't be as late to school as we have been. We, Evelyn McClellan, Edna Owen, and Mildred McCary, will to Louise Hunt, Mary Jo Crenshaw, Wilma Owen, Doris Neal, and Ina Frazier our athletic abilities. We, Peggy Broglin, Pollie Carnahan, Katherine Swiney, and Bascom Johnson bequeath our excess weight to Ruth Mottern, Frances Shankel, and Donald Umberger hoping it will keep your dispositions as good as ours. We, Doris Hagey, Lydia Farris, and Alva Spicer, do will to Sarah Grimes our sweet dispositions. I, C. H. Snow, bequeath my long eyelashes and my ability to flirt with all the girls to Charles Neal. We, Mary Wingard, Betty deBord, Jimmy Cass, Charles Repass, Billy Mitchell, and Herbert Davidson, having an abundant share of silence, bequeath a portion of it to Sydney Moore

and Buddy McGhee. We, Gordon Arnold, John Paul Senter, and Lee Harkleroad will to Wimpy Gray our funny books to be read in Study Hall. We, Joe Combs, Billy Kestner, Lee Stoffel, Stanley McNew, and Craig Rockett, being the masterminds, will our knowledge to any Junior who will study. I, David Masengill, bequeath my good looks to Robert Boyd. I, Katherine Robertson, will my talent as a fiddler to Virginia Lee Templeton. We, Jimmy Breeding, Charles Peters, and Bobby Solomon, leave our reserved seats at the Rat House to Cary Gray and Billy Ruthersford. I, Ben McEwen, bequeath my ability to toot the trumpet to Clayton O'Dell. We, Gordon Montgomery, Warren Slagle, and Marvin Hawk will our cameras to Elmer Rexrode and Sam Lee. We, Nancy King, Mary Frances Thompson, and Albert King, bequeath our ways of winning friends and influencing people to Frances Harkleroad. We, Bill Sayles and Billy Turner, having what is known as a scientific attitude, bequeath it to Eugene Donaldson and John Furge. We, Mary Dove, June Wampler, Murrell Massey, Mary Elizabeth Talbert, and Edith Giesler, will our giggles in Judge's classes to Louise Warren, Elinor Bowery, Jane Allen, and Louise Royston. We, Helen Day and Ruth Kesner, will our secret of how to have beautiful hair to Sara Wolford and Mary Ruth Vance. We, Betsy Ferguson and Duke Coffey, will our many offices to Jules Smythe. We, David Parrish and Billy Fleming, seeing the humorous side of life, leave our wit to Patsy Patrick. I, Betty Harrop, leave my ever-present smile to John Reel, so his dimples will be seen. I, Virginia Coppinger, leave my knack for making eyes at the men to Jean Campbell. We, Frank Thomas and Jamie Barker, leave our technique with the femmes to Herbie Riordan and Billy Hamner. We, Edward Arnold, Charles Bray, Charles Harris, and J. E. Shupe, leave to Charles Crockett, Doug Leach, J. T. Williams, and Charles McCary our ability to misbehave in Study Hall without getting caught. We, Lucy Townsend and Mary Katherine Morgan, do hereby will our ability to stand up for our beliefs to any good debator. We, Nancy Pyle and Julia Baumgardner, leave our kind and helpful attitude to Linnie Burnett, Sara Vance, and Reba Bouton.

All the rest of us leave our empty, worn pocketbooks to the Juniors, who should start filling them now for next year.



# A Glimpse Into the Future

November 3, 1948.

Dear Susie:

From your last letter, I got the idea that the home town is still cooperating with Cupid. This is the thirteenth straight year for Doris Hagey and Billy Cox. Cupid may be slow, but he certainly is sure!

I went to the Modern Art Exhibit here last week and whom should I see there but George Fletcher and Buddy Williams. In talking to them, I discovered that George has been studying abroad, and that Buddy is the B. Williams whose work appears so often in **Madame**. They told me too that Albert King is the editor of **Madame**.

November 4.

My apologies for stopping so abruptly, but Eleanor Epperson called and asked me to lunch with her. You probably know that she has the dancing lead in a new musical opening the 15th of this month. While we were eating, Wilma Breedlove came in with the Jaydeecee Sisters, known to us as Nancy Johnston, Emalee Caldwell, and Jean Dutton. Wilma has the lead in the most popular drama of the season, and the critics are raving about her excellent work. Nancy, Em-

lee, and Jean are starring on a radio program with Herbie Peters' Band, which features Ben McEwen on the cornet. The program is sponsored by Laundry Service, Incorporated, of which Billy Turner is president. Corinne Butterworth decided she would rather lead a band-leader than a band.

I had a letter from Rebecca Lisanby last week. You knew that she is a nurse at the largest hospital in Chicago, didn't you? She said in the letter that Betsy Ferguson, the country's leading woman doctor, had just taken a position at the same hospital.

Oh dear, I guess I might just as well finish this because here comes Mary Frances Thompson with Lucy Townsend and Nancy King. Mary Frances is literary critic of **Madame**, and Virginia Coppinger is her secretary. Nancy and Lucy have recently published their second books. Nancy has written a novel entitled **David**, and Lucy's is a non-fiction work **England Forever**.

I'll write to you as soon as I have an opportunity, but please don't wait too long before you answer this.

Love,  
BETTY.







# Junior Class

The Junior Class of 1941 has done much to add to life at Tennessee High. In a colorful assembly program last Fall, the class officers and motto were introduced in formal style. Banners in the class colors, blue and gold, were proudly displayed, and when these banners were reversed, the school colors, maroon and white, were shown. Clifford Goldsmith's "What A Life" was presented as the Junior Class play, and, followed by the Junior-Senior party, which was heralded as one of the outstanding events of the year. The class has voted to use the money in their treasury to place a portrait of Mr. Eggers in the main hall.

Fall	OFFICERS	Spring
JULES SMTHE	President	CARY GRAY
CARY GRAY	Vice-President	CHARLES NEAL
ALENE LOGAN and BILLIE JO SHERWOOD	Secretaries	JACK WINDERS
MARION COLVARD	Sergeant-at-Arms	WARREN PHILLIPPI

**COLORS:** Blue and Gold **MOTTO:** "Work, Wait, and Win" **FLOWER:** Yellow Rose.





ANDREA ADAMS

JANE ALLEN

VIRGINIA BABB



LOIS BEATY

EVELYN BLEVINS

RUBY BOLLING



REBA BOUTON

ELEANOR BOWERY

ROBERT BOYD



LYNNIE BURNETT

JEAN CAMPBELL

BRUCE CAMPBELL



WILMETH CARRIER

MARION COLVARD

MARY JO CRENSHAW



CHARLES CROCKETT

EUGENE DONALDSON

LEWIS DULANEY



INA FRAZIER

STELLA FRYE

ALFRED GODSEY



CARY GRAY

SARAH GRIMES

BILLY HAMMER



FRANCES HARKLEROAD

MARTHA HAVENS

BILLY HILTON



CHARLES HORNE

MARTHA JEAN HULSEY

LOUISE HUNT



STUART INGRAM

BETTY JANES

LYLE JONES



HOPE KELLER

JACK KELSO

DOUGLAS LEACH



DORIS JANE LEONARD

MARY ELIZABETH LESLIE

LON LILLEY



ALENE LOGAN

EVELYN LOGGANS

BILL LOUDY







RITA MARKLAND

PEGGY MARTIN

LOUISE MOORE



GARNET McCALL

R. E. McCLELLAN

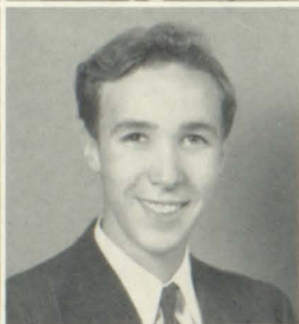
WAYNE McDONALD



KARL MCGHEE

CHARLES NEAL

DORIS NEAL



MYRA NETHERLAND

BOBBY NICAR

CLAYTON O'DELL



PRESTON O'DELL

PATSY PATRICK

HUGH POST



JOHN REEL

CONLEY RICHARDS

BILL RINGLEY



JACK RINGLEY

HERBIE RIORDAN

PAUL RIPLEY



LOUISE ROYSTON

BILL RUTHERFORD

FRANCES SHANKEL



BILLIE JO SHERWOOD

ANITA SMITH

GERALDINE STANSBERY



TED STAUFFER

DON STICKLEY

CLAUDE SWINEY



VIRGINIA TEMPLETON

GENEVIEVE THOMAS

MARY RUTH VANCE



SARA VANCE

CLYDE WAMPLER

LOUISE WARREN



DOUGLAS WATSON

LOUISE WIDENER

J. T. WILLIAMS



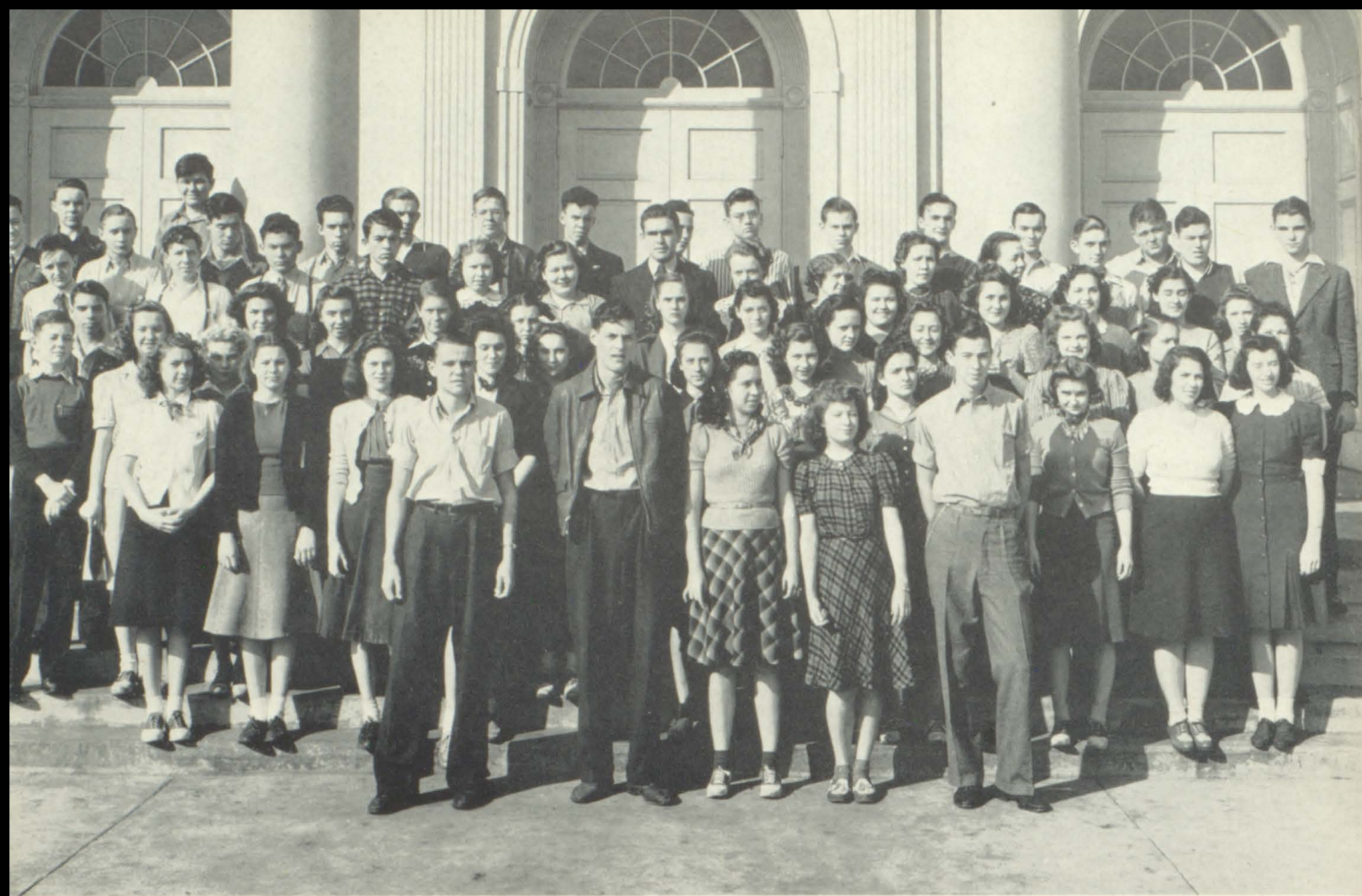
JACK WINDERS

BILLIE WININGER

SARA WOLFORD







**Row One:** B. WAYLAND, D. EASLEY, D. MAUK, C. SENTER, B. NICHOLS.

**Row Two:** A. O'DELL, B. CAMPBELL, J. BUCKLES, W. COMERFORD, J. MILLARD, A. DEBORD, R. BOAZ, D. CALHOUN, E. HAMRICK, J. BURROW, B. CLARK.

**Row Three:** J. RUCKER, M. HORNE, E. SIMCOX, R. JONES, E. J. MCCLELLAN, B. SMITH.

**Row Four:** C. MINOR, L. FLEENOR, B. CHILDRESS, S. REESE, D. ARNOLD, T. RATHER, G. COFFEY, H. GRAY, B. BOYD, E. PYLE, A. ARNOLD, G. PENDLETON, P. SMITH, R. JENKINS.

**Row Five:** K. HOOKS, A. RIDDLE, C. BAKER, J. ANDERSON, M. COMBS, I. DENTON, MR. GARLAND, MISS DRYDEN, MISS SMITH, MRS. MARNEY, MRS. CALDWELL.

**Row Six:** J. SNAPP, C. CLARK, B. FERGUSON, J. GROSECLOSE, R. MOTTERN, B. MILLER, J. SKINNER, H. ROBERTS, D. MACMILLAN, T. DRIVER, J. BRUMITT, C. FRANCISCO, E. HAGEY, B. FAUCETTE, T. HAYS, C. WYATT, W. LAMBERT, A. MEADOWS.

**Fall**

**OFFICERS**

**Spring**

BILL TOM WAYLAND	President	JAMES ANDERSON
DICK EASLEY	Vice-President	AUDREY MEADOWS
DORIS MAUK	Secretary	WILMA COMERFORD
CAROLINE SENTER	Treasurer	CHARLES BAKER
BILL NICKELS	Sergeant-at-Arms	LAWRENCE CARRIER

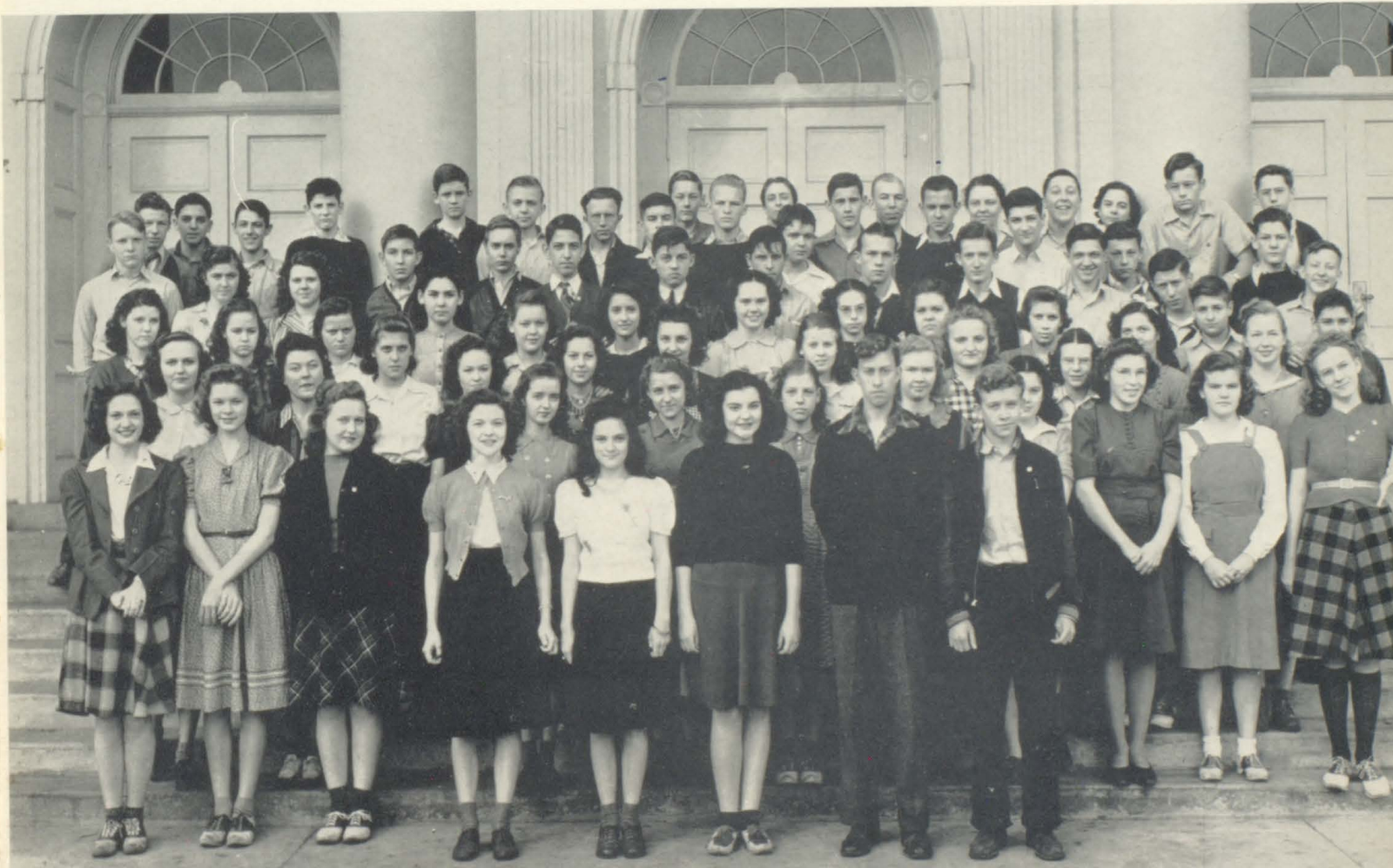
*Sophomore Class*



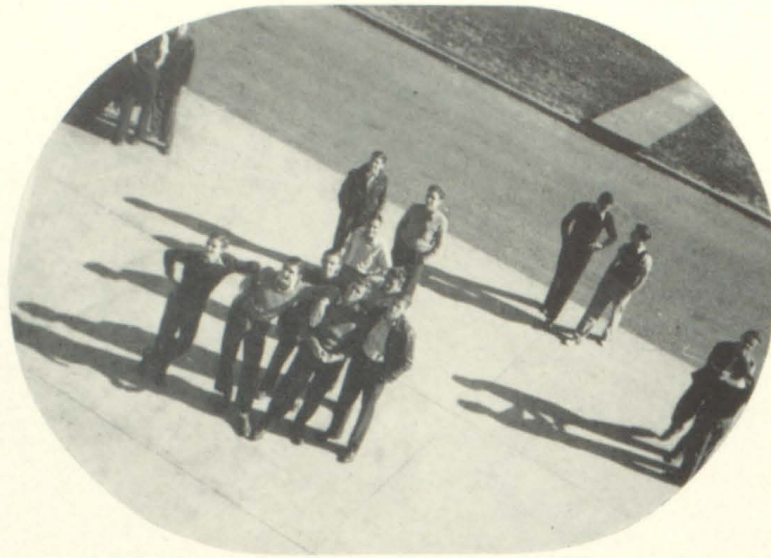
# Freshman Class

Fall	OFFICERS	Spring
MARY JANE POWERS	President	VICTOR OBENSHAIN
DOTTY CARMODY	Vice-President	BUDDY REYNOLDS
VIRGINIA FRANKLIN	Secretary	BETTY RUTH REEL
ALLEN MUMPOWER	Treasurer	CHARLES MOORE
RAY McCROSKEY	Sergeant-at-Arms	HAL LITTLEFORD

- Row One:** F. LANE, P. NICKELS, R. WOODWARD, V. FRANKLIN, D. CARMODY, M. J. POWERS, A. MUMPOWER, J. ADAMS.
- Row Two:** M. KESTNER, R. CORNELL, M. CALHOUN, M. A. FLETCHER, J. WILCOX, M. K. ELLER, M. O'DELL, A. BACHMAN, B. FRANCISCO, K. FLEENOR, S. FAUCETTE, J. BEIDLEMAN.
- Row Three:** A. MCKEE, J. ROCK, B. PHILLIPS, F. HICKS, M. CARTER, J. PHELPS, M. FISHER, M. HYATT, D. BULLOCK, M. MILLER, M. F. McCROSKEY, L. PATTON, L. DAVIDSON, G. WINEBARGER, H. MUNDIE, H. HARSBARGER, N. STICKLEY.
- Row Four:** L. LONG, B. R. REEL, C. CROWFORD, J. STONE, C. HELTON, B. J. COONTZ, G. MOORE, H. LITTERFORD, B. OVERMAN, R. BLEVINS, C. MOORE, J. EDWARDS, J. BLEVINS, N. COLLIS, J. GRUBBS, P. MORRELL, G. LONG.
- Row Five:** R. AUSTIN, N. HALL, E. MILBURN, M. FAIN, C. SCOTT, G. BARR, A. DAVIDSON, S. STEPHENSON, C. DENTON, M. BRAG, MISS STERETT, J. DROKE, MR. FOUTCH, C. SLAGLE, MISS HAWKINS, J. HULL, J. HUDDLE, MISS FORTUNE, H. BIBEE, R. BLEVINS, J. KUMMER.







## *Classes in Action*

The Senior Class of 1941, under the leadership of two capable presidents, Duke Coffey and Karl Smith, has made remarkable progress. One hundred twenty-four of the one hundred twenty-six Seniors are pictured in this annual. To finance its activities, the class has sold Curtis and Crowell publications, picture show tickets, and operetta tickets. The class of '41, the largest Senior Class Tennessee High has ever known, has in its membership many outstanding people.

The Junior Class of fifty-six boys and fifty-one girls has been the "life of the party". It has led in drives for school spirit, and the colorful Junior assembly program was an inspiration to all the other classes. The class play, "What A Life", was received as one of the best stage presentations at Tennessee High during the year, and the Junior-Senior party was more successful than any other class party has been in recent years.

The Sophomore Class this year has one hundred twenty-three members, of which fifty-nine are boys and sixty-four are girls. The outstanding class activity was the presentation in assembly of a program commemorating the one hundred fiftieth anniversary of the organization of the Southwest Territory. The pageant was received so well by the student body that it was repeated before the Parent-Teachers' Association and the Junior Red Cross.

One hundred fifty-five Freshmen make up the largest class in Tennessee High. The aim of most of the Freshmen is to be Sophomores and to wreak vengeance on next year's Freshmen. The Freshman Class presented a program of Virginia Intermont talent in assembly. This last class is, in a sense, the least. The Spring president, Victor Obenshain, stands only four feet nine and one-half inches, and weighs ninety-three pounds.



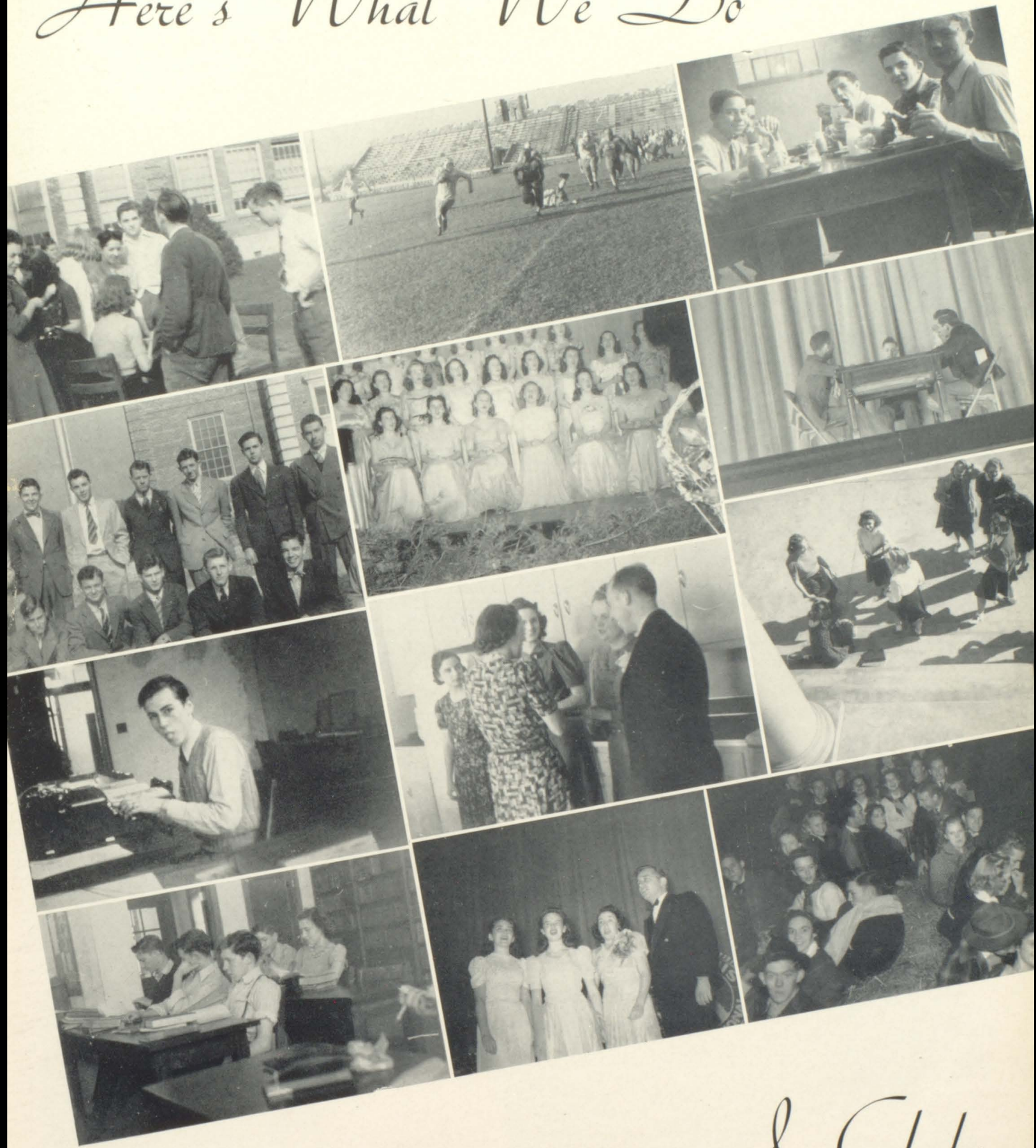


# ORGANIZATIONS



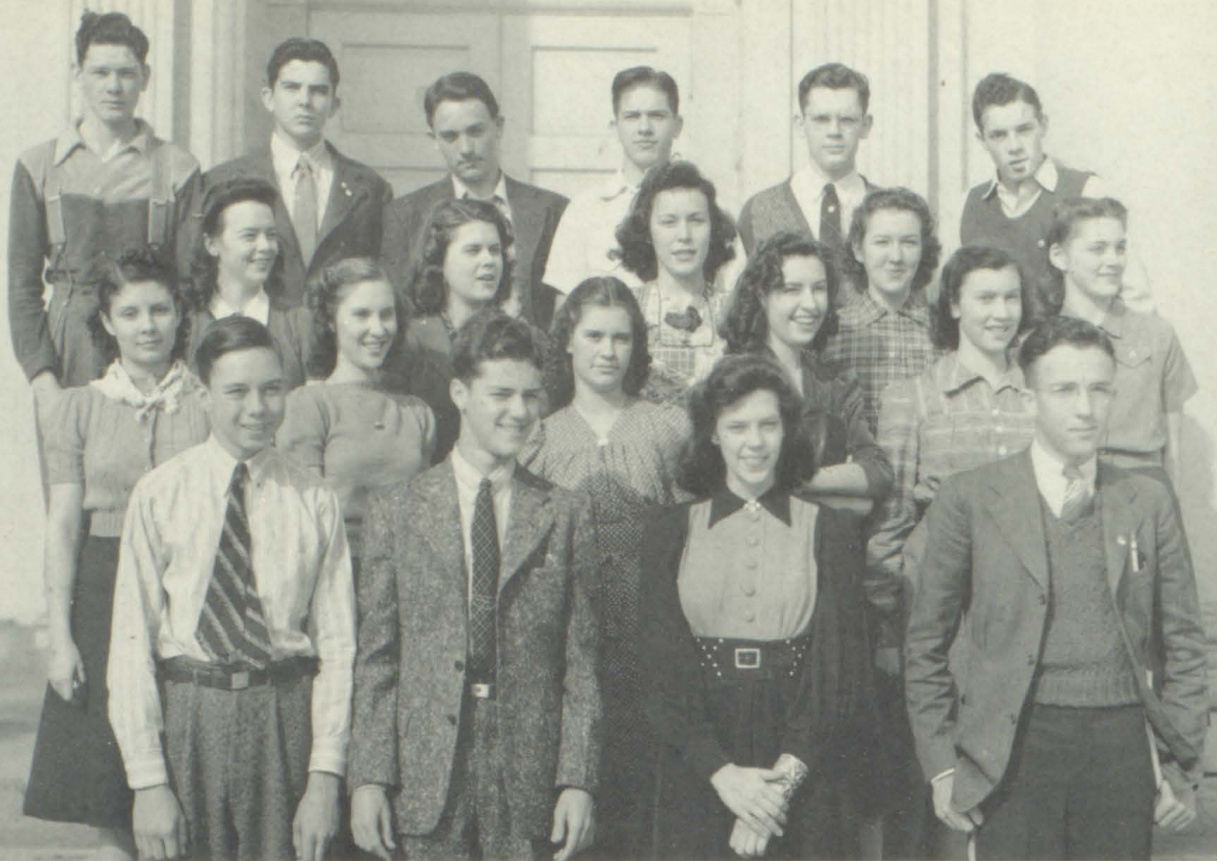


# Here's What We Do



In Clubs



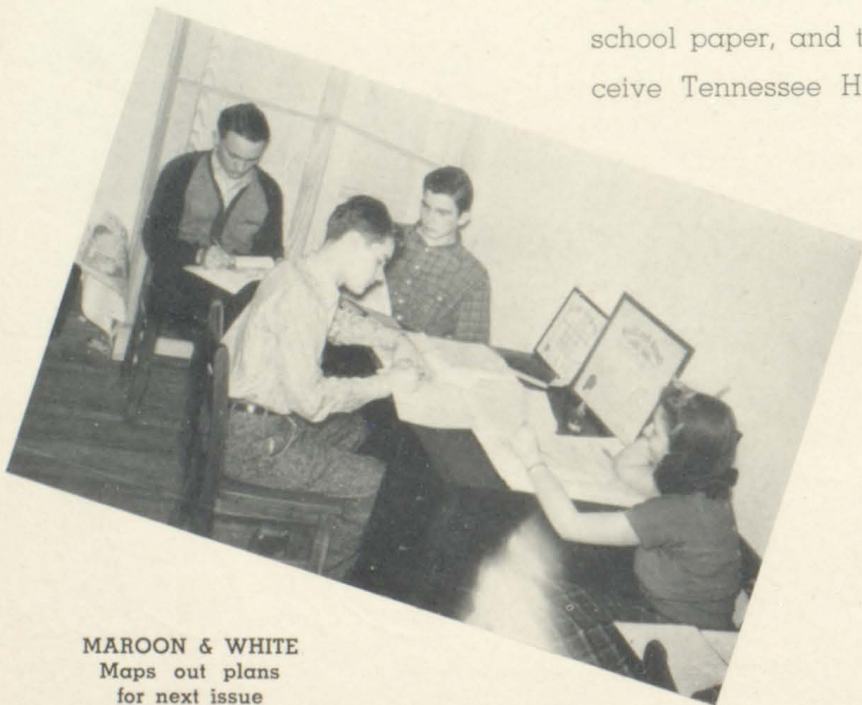


**Front Row:** HENRY BARKER, Associate Editor; ALBERT KING; NANCY KING, and LEE STOFFEL, Associate Editors.  
**Row Two:** WAYNE McDONALD, Circulation; EVELYN BLEVINS and JUNE WAMPLER, Typists; FRANCES HARKLEROAD, Exchange; ANDREA ADAMS, News.  
**Row Three:** EMALEE CALDWELL, News; MARY FRANCES THOMPSON, Sports; GLORIA BACHMAN, Features; BILLIE HAMM, News; NANCY JOHNSTON, Alumni.  
**Row Four:** STUART INGRAM, Sports; JAMIE BARKER and BILLY KESTNER, Managing Editors; LEWIS DULANEY, News; CRAIG ROCKETT, Literary; DAVID MASENGILL, Sports. Sponsor MISS BROCE.

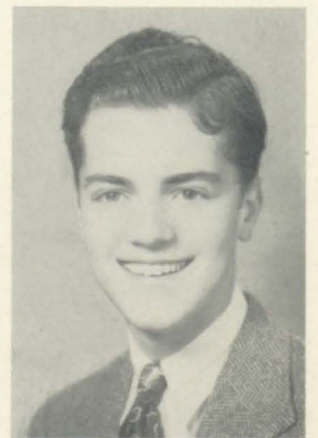
# Maroon & White

One of the most important of the many student organizations is the MAROON & WHITE. It publishes a first-rate, monthly school paper, and the MAROON & WHITE staff members receive Tennessee High's only available journalistic training.

The paper is financed through the sale of student activity tickets, basket-ball concessions, and through the Book Store.

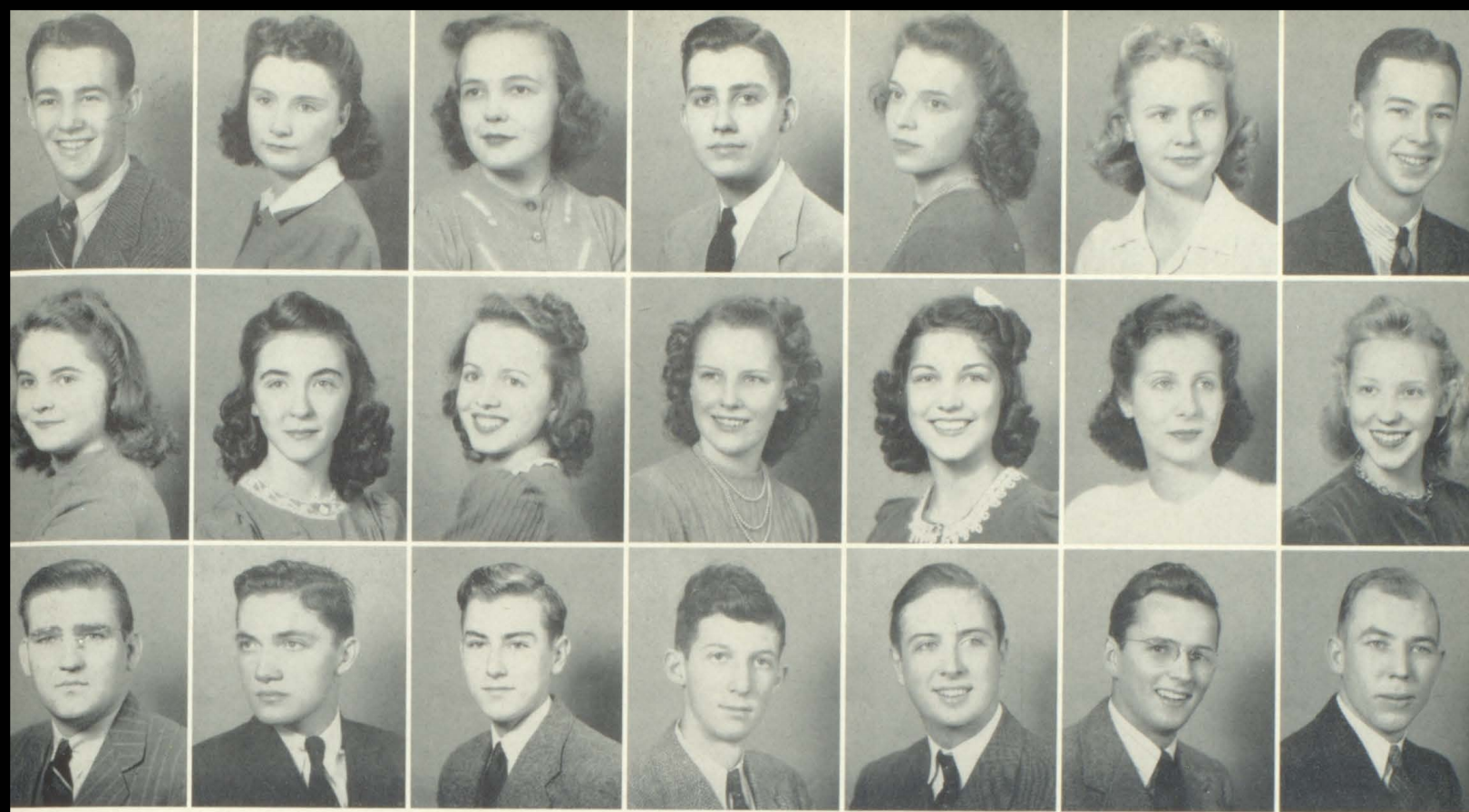


**MAROON & WHITE**  
 Maps out plans  
 for next issue



**EDITOR**  
**ALBERT KING**





**Row One:** KARL SMITH, Sports; BETSY FERGUSON, Sports; JULIA BAUMGARDNER, Literary; BUDDY WILLIAMS, Art; NANCY PYLE, Literary; REBECCA LISANBY, Literary; and BILLY NICKELS, Sports.

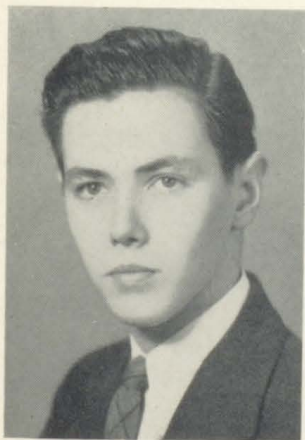
**Row Two:** EMMA HAMRICK, BILLIE CHILDRESS, DORIS HAGEY, ALENE LOGAN, ALVA SPICER, BETTY HARROP, and ELEANOR EPPERSON, all Typists.

**Row Three:** MR. SADLER, Sponsor; CHARLES REPASS, Business Manager; JOE COMBS, Advertising Manager; BOBBY SOLOMON, Advertising; WARREN SLAGLE and JIMMY WILSON, Snapshots; and MR. FOUTCH, Sponsor.

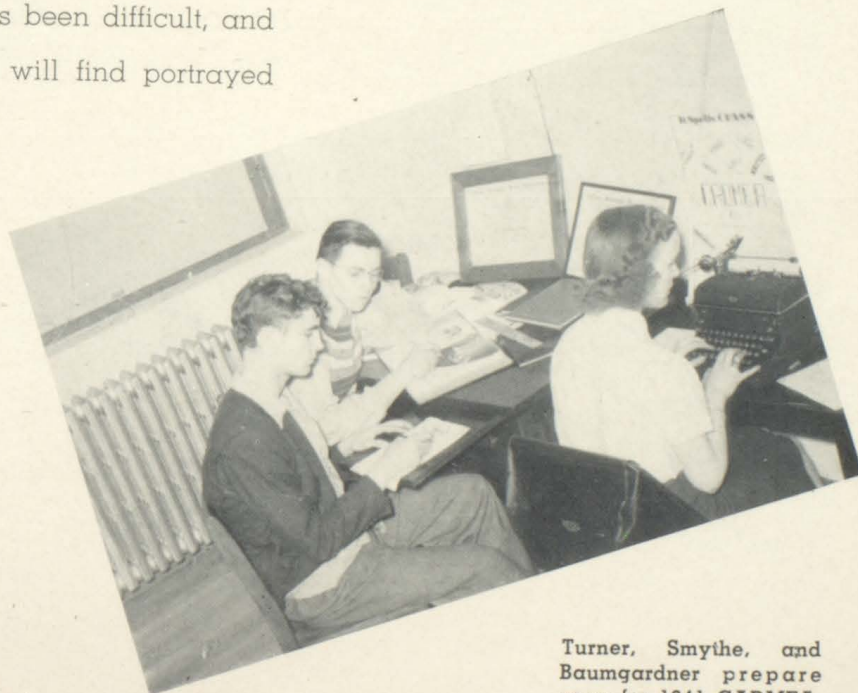
# The Cadmus Club

In presenting the CADMEA for 1941, the Cadmus Club endeavors to picture life at Tennessee High in such a way that it will not be soon forgotten. The task has been difficult, and the staff sincerely hopes that the reader will find portrayed

within these pages the true beauty and happiness in the life of a student of Tennessee High School, a VIKING.



EDITOR  
BILLY TURNER



Turner, Smythe, and Baumgardner prepare copy for 1941 CADMEA.



## ALCHEMIST CLUB

MISS SMITH ..... Sponsor

### PRESIDENTS

#### Fall

NANCY KING ..... Chem. I

CARY GRAY ..... Chem. II

#### Spring

WIMPY GRAY ..... Chem. I

DAVID MASENGILL ..... Chem. II



**Row One:** KING, GRAY, DONALDSON, COMBS, THOMPSON, FARRIS, JANES, WINDERS, GRAY, UMBERGER.

**Row Two:** FAULKNER, ALLEN, MILBURN, PYLE, HAGY, ASHBURNER, BAUMGARDNER.

**Row Three:** HARRIS, CRENSHAW, PATRICK, JOHNSTON, EPPERSON, CAMPBELL, CARNAHAN, HARROP, TOWNSEND.

**Row Four:** KELSO, MCCLELLAN, TURNER, PETERS, MISS DELLE SMITH, HAMRICK, KING, MASENGILL, MAUK, HARKLEROAD.

**Row Five:** INGRAM, RIORDAN, RICHARDS, DISHNER.

## OVER-RIPE HENFRUIT

The Alchemist Club, organized by the chemistry class of 1929, attempts to bring into the classroom interesting outside material which parallels current work. Bi-weekly programs include scientific news, chemical biographies, outside speakers, and model demonstrations of chemical processes used in American factories.

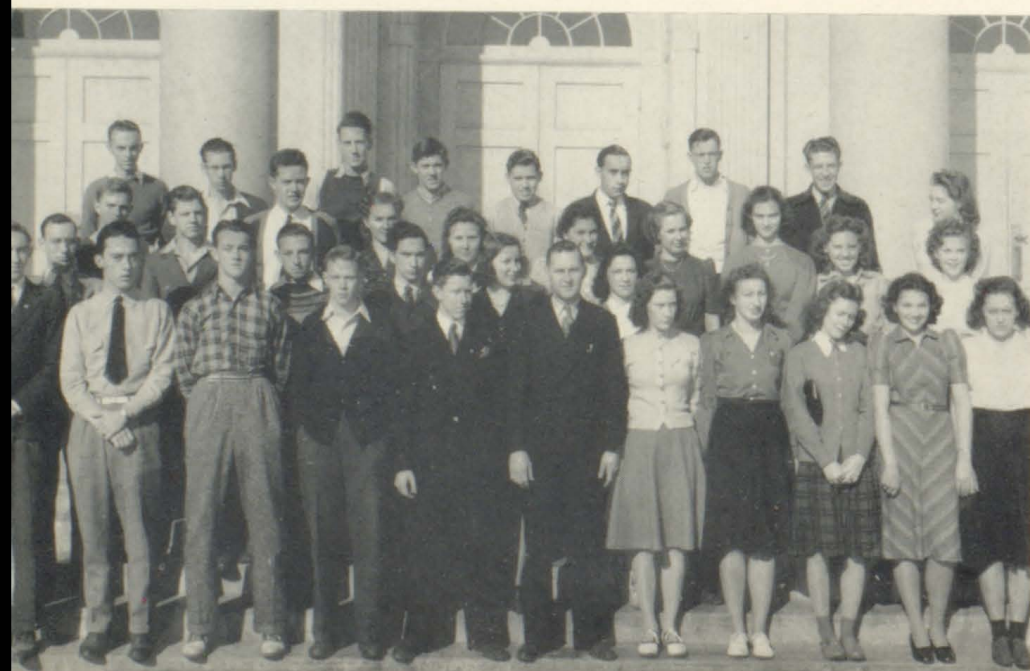
## HO-HUM! THIS WORKING WORLD

The membership of the Diversified Occupations Club consists of students who divide their time between school and work. Opportunity is given the student to work in the field in which his talent lies. This work gains credits toward graduation.

**Row One:** WARREN, X. SMYTHE, SMITH, RUTHERFORD, C. REXRODE, MR. MILLER, BOUTON, WATSON, BOOHER, VANCE, FREELS.

**Row Two:** D. WATSON, J. RINGLEY, E. REXRODE, THOMAS, BROWN, MILLARD, MONTGOMERY, STOFFEL, NETHERLAND, LESLIE, DAY, MCCARY, MOTTERN, MOORE, DOVE.

**Row Three:** B. RINGLEY, RAMSEY, ARNOLD, CASS, CATHER, JIM WARREN, LEACH, WEBB, MYRA NETHERLAND.



## D. O. CLUB

MR. MILLER ..... Sponsor

### OFFICERS

#### Fall

XAN SMYTHE ..... President

KARL SMITH ..... Vice-President

MARY RUTH VANCE ..... Sec.-Treas.

#### Spring

XAN SMYTHE ..... President

KARL SMITH ..... Vice-President

MARY RUTH VANCE ..... Sec.-Treas.



## ALL STUDENTS' COUNCIL

MR. EGGERS ..... Sponsor

### OFFICERS

#### Fall

JIMMY WILSON ..... President

DUKE COFFEY .... Vice-President

BETSY FERGUSON .... Secretary

HENRY BARKER ..... Treasurer

#### Spring

DUKE COFFEY ..... President

KARL SMITH .... Vice-President

BETSY FERGUSON .... Secretary

MARION COLVARD .... Treasurer



**Row One:** MR. EGGERS, BARKER, WILSON, FERGUSON, COFFEY.

**Row Two:** CATHER, A. KING, GRAY, THOMSON, N. KING, CHILDRESS, McDONALD, BRADDOCK, FRANKLIN.

**Row Three:** BOYD, FAIDLEY, ROCKETT, NICHOLS, STCKLEY, WHITAKER, SPICER, POWERS.

**Row Four:** WAYLAND, KYLE, BREEDING, SMYTHE, TURNER.

## CREAM OF THE CROP

The All-Students Council is the student government of Tennessee High. Membership is made up of presidents of all school organizations. The Council arranges assembly programs and officiates in activities which concern the entire student body.

## BIBLE WORKERS

The Bible Club was organized by students interested in studying the Bible and furthering religious activities in the school. The club has done excellent work in preparing chapel programs and presenting them every Tuesday.

**Row One:** CATHER, MILBURN, WINEBARGER, MOORE, ELLER, D. ARNOLD, WILSON.

**Row Two:** BIRDWELL, REED, WAMPLER, WARREN, VANHOOK, HARRISON, BEIDLEMAN.

**Row Three:** E. ARNOLD, MISS BROCE, MILBURN, BASHAM, DENTON, CLAYMAN, DAVIDSON.

## BIBLE CLUB

MISS BROCE ..... Sponsor

### OFFICERS

#### Fall

BILL CATHER ..... President

JIMMY WILSON .. Vice-President

GRACE WINEBARGER Sec.-Treas.

#### Spring

LOUISE MOORE ..... President

BILL CATHER .... Vice-President

RUTH MILBURN .... Sec'y.-Treas.





## COMMERCIAL CLUB

MISS HAWKINS and MR. FOUTCH,  
Sponsors.

### OFFICERS

#### Fall

ALVA SPICER \_\_\_\_\_ President  
ANITA SMITH \_\_\_ Vice-President  
ELLEN WHITAKER \_\_\_\_ Secretary  
SARA VANCE \_\_\_\_\_ Treasurer  
SAM LEE \_\_\_\_ Sergeant-at-Arms

#### Spring

ELINOR BOWERY \_\_\_\_\_ President  
EVELYN BLEVINS \_ Vice-President  
SAM LEE \_\_\_\_\_ Secretary  
LEWIS DULANEY \_\_\_\_\_ Treasurer  
EDWARD ARNOLD \_\_ Sgt.-at-Arms



Row One: WHITAKER, SPICER

Row Two: BOWERY, A. SMITH, VANCE, LEE.

Row Three: ALLEN, KESNER, BROGLIN, BLEVINS, BANE, WAMPLER.

Row Four: C. PETERS, WIDENER, CARRIER, FRAZIER, NEAL, DECK, LOGGANS, MARTIN, THOMAS, MASSEY.

Row Five: DULANEY, ARNOLD, MARKLAND, PATRICK, COPPINGER, MR. FOUTCH, GLOVER, MISS HAWKINS, CRENSHAW, ZORY, GRIMES, MORTON, HARRISON, WARREN, MOORE.

### TAKE A LETTER

The Commercial Club is designed to help students interested in business administration or secretarial work. Members learn much about their chosen vocations through demonstrations of business machines and field trips.

### T STANDS FOR TENNESSEE

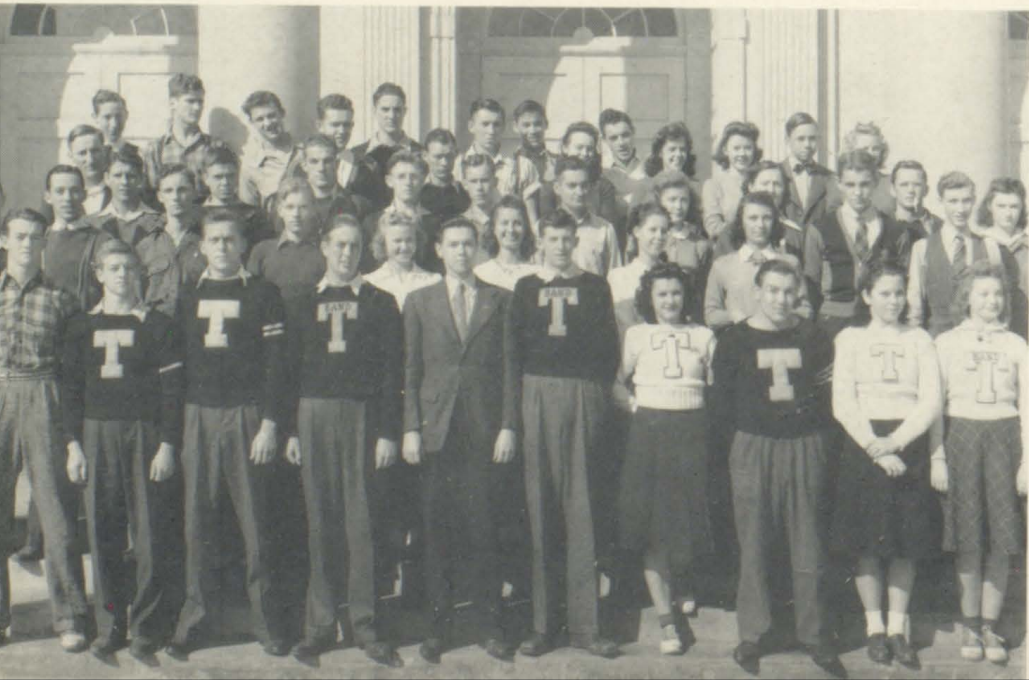
The T Club is a type of honorary society, its membership consisting solely of students who have earned T's in athletics, music, or public speaking.

Row One: SMITH, C. GRAY, COLVARD, SLAGLE, TURNER, SOLOMON, TATE, CARRIER, ZINT, BUTTERWORTH.

Row Two: HARRIS, COFFEY, SMYTHE, POST, LISANBY, BREEDLOVE, STANSBERRY, FAULKNER, MEADOWS, C. McEWEN.

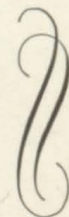
Row Three: FELTY, MCGHEE, LANE, KYLE, FLEMING, SMITH, B. McEWEN, O'DELL, HUNT, NEAL, WILSON.

Row Four: McNEW, HAMRICK, H. PETERS, THOMAS, C. NEAL, FAIDLEY, McCLELLAN, CALDWELL, MASENGILL, N. KING, PATRICK, BARKER, EPPERSON.



### T CLUB

The T Club has no officers.





## FRENCH CLUB

MISS DRYDEN ----- Sponsor

### PRESIDENTS

#### Fall

CRAIG ROCKETT ----- I  
 BETSY FERGUSON ----- III  
 JIMMY BREEDING ----- IV

#### Spring

JACK WINDERS ----- II  
 EMALEE CALDWELL ----- IV



**Row One:** BREEDING, HARKLEROD, ADAMS, HULSEY, BUTTERWORTH, FERGUSON, CAMPBELL, HAGY, SAYLES.  
**Row Two:** CALDWELL, JANES, McDONALD, SMITH, BLEVINS, WOLFORD, FARRIS, DAVIDSON.  
**Row Three:** FLETCHER, FLEENOR, CLARK, TATE, SMITH, ROBERTSON, FAULKNER, SHANKEL, KELSO, HENRY.  
**Row Four:** PARRISH, DUTTON, EPPERSON, MISS DRYDEN, DECK, KING, SNOW.  
**Row Five:** MITCHELL, SOLOMON, TURNER, WINDERS, McEWEN, SLAGLE, McNEW, REPASS.

### THESE FURRINERS

French Clubs are organized in each French class. In addition to studying the language, students learn something of the people, customs, history, and art of France through research reports. This year the French Clubs gave a French banquet which was enjoyed by all and will probably become an annual affair.

### FRY MINE SUNNY SIDE UP

The Home Economics Club is a member of the Sullivan County Council; Rebecca Lisanby was vice-president of the council. A club fellowship fund finances a Home Ec. course for three foreign girls. The members have given clothes to the Red Cross to be sent to Britain, have adopted Santa Pals, and have helped the Needlework Guild.

**Row One:** F. LANE, FURSE, SHERWOOD, LOGAN, CARMODY, PROFFITT, PHELPS, MAUK, WHITAKER, STICKLEY, FAUCETTE, FLEENOR, FRANCISCO, FRANKLIN, HICKS.  
**Row Two:** HORN, SIMCOX, GRAY, LISANBY, HUNT, BAUMBARDNER, HAVENS, CAMPBELL, REESE, WILCOX, WOODARD, FISHER, WARREN, WOLFORD, HARSHBARGER.  
**Row Three:** ROBINETTE, KESNER, PYLE, ASHBURNER, BACHMAN, BASHAM, BRAY, PROFFITT, POWERS.  
**Row Four:** LESLIE, MARTIN, WARREN, LEONARD, KELLER, EIXLER, CAMPBELL, ROCK, AUSTEN, BULLOCK, FLETCHER, TEMPLETON, TURNER, MUNDIE, ELLER.  
**Row Five:** CORRELL, BEIDLEMAN, KESNER, CRAWFORD, REEL, TOWNSEND, McKEED, WIDENER, LOGGANS, COMBS, SWINEY, BOYD, SMITH, BEATY, ARNOLD, PATTON, MISS FORTUNE.

## HOME EC. CLUB

MISS FORTUNE ----- Sponsor

### PRESIDENTS

#### Fall

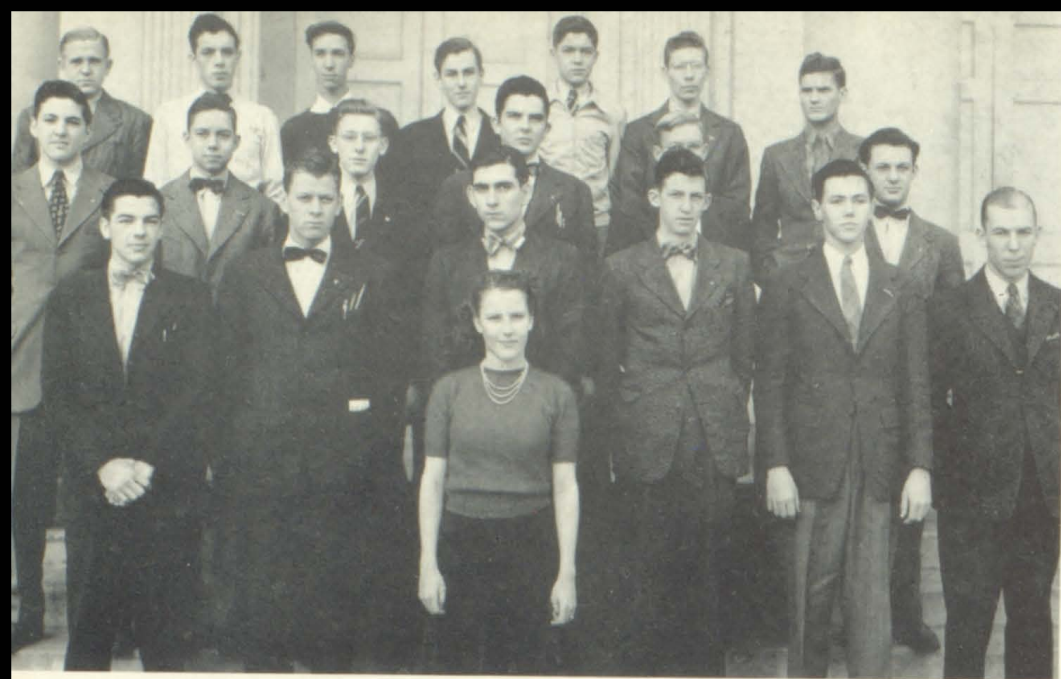
NANCY STICKLEY ----- I  
 VIRGINIA FRANKLIN ----- II  
 MARION HOGSETT ----- III  
 ELLEN WHITAKER ----- IV  
 PEGGY NICKELS ----- II

#### Spring

ELIZABETH REPASS ----- I  
 ALENE LOGAN ----- II  
 VIRGINIA FRANKLIN ----- III  
 BETSY FERGUSON ----- IV  
 SARA K. FAUCETTE ----- II







Row One: C. PETERS, BREEDING, BOYD, LOGAN, SOLOMON, TURNER, MR. FOUTCH.  
 Row Two: WINDERS, H. BARKER, FLEMING, J. BARKER, POST, H. PETERS.  
 Row Three: HARRIS, MASENGILL, NICAR, COMBS, RIORDAN, HAMMER, HAMRICK.

## JUNIOR CIVITAN

MR. FOUTCH ----- Sponsor

### OFFICERS

#### Fall

BILLY TURNER ----- President  
 BOBBY SOLOMON Vice-President  
 ROBERT BOYD ----- Secretary  
 JIMMIE BREEDING ----- Treasurer  
 CHARLES PETERS --- Sgt.-at-Arms  
 ALENE LOGAN ----- Sweetheart

#### Spring

JOE COMBS ----- President  
 BOBBY SOLOMON Vice-President  
 ROBERT BOYD ----- Secretary  
 JIMMIE BREEDING ----- Treasurer  
 JIMMY BARKER --- Sgt.-at-Arms  
 ALENE LOGAN ----- Sweetheart

## BUILDERS OF CITIZENSHIP

The Junior Civitan Club stands for good citizenship in the home, school, and community. Members must average 80% scholastically. Among the Junior Civitan projects have been the dedication of a flag and flag-pole, the publication of football programs, the helping of Santa Pals, and the donation of \$25 toward buying a school movie projector.

## MR. PRESIDENT, I MOVE

The Speech Club promotes speech work in lines such as debating, oratory, extemporé, declamation, and after-dinner speaking. Members have entered National Forensic League and Interstate Forensic League tournaments, and the club has presented a weekly radio program over WOPI.

Row One: BAKER, McEWEN, KING, WILLIAMS, DRIVER.  
 Row Two: E. PYLE, BOAZ, GRAY, HAMRICK, BABB, N. PYLE, CALHOUN.  
 Row Three: MRS. CALDWELL, REED, E. CALDWELL, BUTTERWORTH, THOMPSON, BAUMGARDNER, WHITAKER, GLOVER.  
 Row Four: MACMILLAN, POST, J. FAUCETTE, MEADOWS, B. FAUCETTE, ROCKETT.



## SPEECH CLUB

MRS. CALDWELL ----- Sponsor

### OFFICERS

#### Fall

BUDDY WILLIAMS ----- President  
 TOM DRIVER ----- Vice-President  
 NANCY KING ----- Secretary  
 CHARLES McEWEN ----- Treasurer  
 CHARLES BAKER --- Sgt.-at-Arms

#### Spring

LEE STOFFEL ----- President  
 CRAIG ROCKETT --- Vice-President  
 EMMA HAMRICK ----- Secretary  
 BUDDY WILLIAMS ----- Treasurer  
 BILL FAUCETTE ----- Sgt.-at-Arms



## LATIN CLUB

MISS STERETT ----- Sponsor

### OFFICERS

#### Fall

LEE STOFFEL ----- President  
DUKE COFFEY --- Vice-President  
MARY F. THOMPSON -- Secretary  
NANCY KING ----- Treasurer  
MISS STERETT ----- Sgt.-at-Arms

#### Spring

DUKE COFFEY ----- President  
EVELYN McCLELLAN ---  
Vice-President  
NANCY J. JOHNSTON -- Secretary  
MARY F. THOMPSON -- Treasurer  
BASCOM JOHNSON -- Sgt.-at-Arms



**Row One:** STOFFEL, THOMPSON, COFFEY, KING.  
**Row Two:** BEATY, LEONARD, TEMPLETON, LONG, JOHNSON.  
**Row Three:** ROCKETT, TOWNSEND, JOHNSTON, SPICER, R. E. McCLELLAN.  
**Row Four:** BEARD, WILLIAMS, E. McCLELLAN, MISS STERETT, MACMILLAN.

### HIC-HIC-HIC (!!)

The Latin Club, a class organization, calls "time out" to enjoy Cicero without too much undue translation. Especially featured are the Roman holiday customs, which the club incorporates into its own program. In this method, Cicero is taken in small doses, painlessly.

### HAR-R-R-D-D MEN!

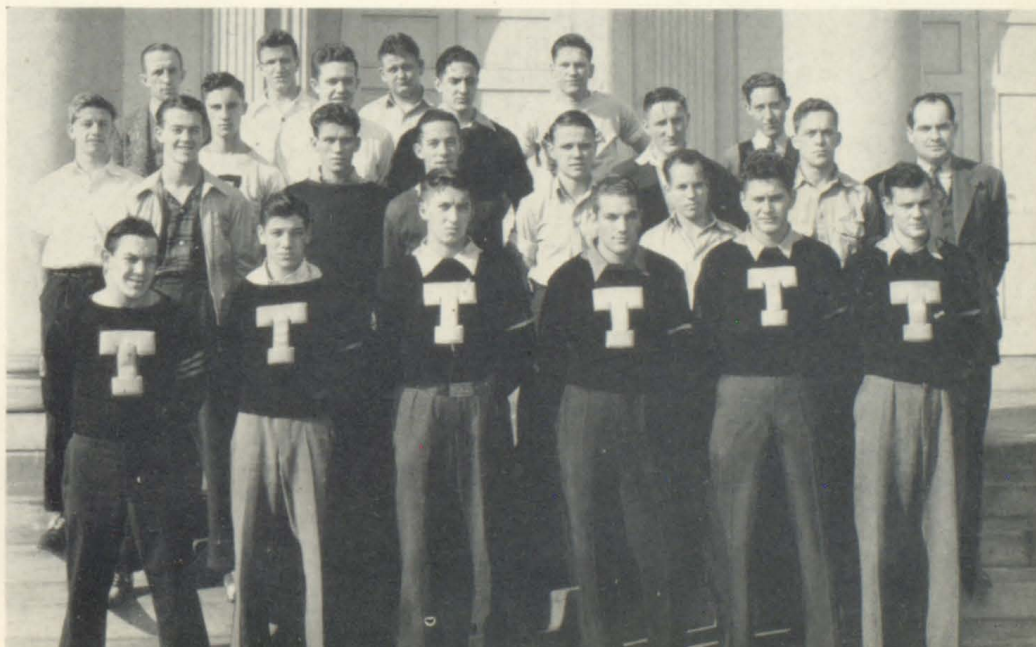
The Kru Klub is composed of boys who have earned their letters in football, basket-ball, or track. It has encouraged large-scale student participation in school athletics.

**Row One:** CARRIER, W. GRAY, FAIDLEY, KYLE, RILEY, CAMPBELL.  
**Row Two:** C. GRAY, SMITH, B. WYATT, COFFEY, WAYLAND, GILLEY, COLVARD, Coach COLOMON.  
**Row Three:** Coach ESSER, SMYTHE, STICKLEY, THOMAS, C. WYATT, NEAL, PARRISH, FELTY, McNEW.

## KRU KLUB

MR. SOLOMON and MR. ESSER  
Sponsors

The Kru Klub has no officers.







Row One: REPASS, COFFEY, McEWEN, NICKELS, KESTNER.  
 Row Two: BEARD, ROCKETT, MACMILLAN, BARKER, COMBS, STOFFEL, TURNER.

## ASTRONOMY CLUB

MISS OWEN ..... Sponsor

### OFFICERS

#### Fall

CHARLES REPASS ..... President  
 DUKE COFFEY .... Vice-President  
 CHARLES McEWEN ... Secretary  
 BILL NICKELS ..... Treasurer  
 BILLY KESTNER .... Sgt.-at-Arms

#### Spring

CHARLES REPASS ..... President  
 DUKE COFFEY .... Vice-President  
 CHARLES McEWEN ... Secretary  
 BILL NICKELS ..... Treasurer  
 BILLY KESTNER .... Sgt.-at-Arms

## IS MARS INHABITED? WHY?

The purpose of the Astronomy Club is to promote interest in mathematics and astronomy, and to prepare students for the study of astronomy in college. During the year, the club presented an interesting chapel program consisting of movies dealing with astronomical subjects.

## SHAKESPEARE DRAMATIZED ALSO

The members of the Dramatics Club have studied and produced one-act plays. Play production has also been studied.

Row One: HAVENS, HARKLEROAD, CHILDRESS, BURROW, McDONALD.  
 Row Two: FURSE, COMERFORD, CRENSHAW, BEATY, HUNT, BRADDOCK.  
 Row Three: BUCKLES, MILLARD, HAMM, BACHMAN, FLEENCR.  
 Row Four: MR. GILLINGHAM, CLARK, JENKINS, MISS STERETT.



## DRAMATICS CLUB

MR. GILLINGHAM and  
 MISS STERETT ..... Sponsors

### OFFICERS

#### Fall

BILLIE CHILDRESS .... President  
 JANE BURROW .... Vice-President  
 WAYNE McDONALD ... Secretary  
 FRANCES HARKLEROAD Treasurer  
 MARTHA HAVENS ... Sgt.-at-Arms

#### Spring

WAYNE McDONALD ... President  
 BILLIE CHILDRESS Vice-President  
 WILMA COMERFORD ... Secretary  
 JEAN BUCKLES ..... Treasurer



## JUNIOR RED CROSS

MISS HAWKINS \_\_\_\_\_ Sponsor

### OFFICERS

#### Fall

WAYNE McDONALD \_\_\_ President  
DAVID MASENGILL—

Vice-President

GLORIA BACHMAN \_\_\_\_\_ Secretary  
NANCY J. JOHNSTON\_\_\_ Treasurer

#### Spring

WAYNE McDONALD \_\_\_ President  
DAVID MASENGILL—

Vice-President

GLORIA BACHMAN \_\_\_\_\_ Secretary  
NANCY J. JOHNSTON\_\_\_ Treasurer



**Row One:** CARMODY, COFFEY, McDONALD, BACHMAN.

**Row Two:** BULLOCK, PROFFITT, STICKLEY, ADAMS, COPPINGER.

**Row Three:** MARKLAND, HICKS, LYNCH, SENTER.

**Row Four:** HOOKS, MISS HAWKINS, JOHNSTON, THOMPSON, MASENGILL.

## WE SERVE

The Junior Red Cross has been outstanding in the Red Cross, Tubercular, and Infantile Paralysis drives. The objective of this organization is to make Tennessee High 100% in helping those who are needy.

## GEMS OF THE GYM

All girls' sports at Tennessee High are under the jurisdiction of the Intramural Council. This year tournaments were held for the girls in basket-ball, volley-ball, ping-pong, foul-pitching, and baseball.

**Row One:** FAUCETTE, COPPINGER, FERGUSON, COFFEY, MISS COMBE.

**Row Two:** HUNT, MOTTERN, OWEN, MCCLELLAN, NEAL, HOGSETT.

## INTRAMURAL COUNCIL

MISS COMBE \_\_\_\_\_ Sponsor

### OFFICERS

#### Fall

BETSY FERGUSON \_\_\_\_\_ President  
EDNA OWEN \_\_\_\_\_ Vice-President  
VIRGINIA COPPINGER \_\_\_\_\_ Secretary  
GLADYS COFFEY \_\_\_\_\_ Treasurer

#### Spring

BETSY FERGUSON \_\_\_\_\_ President  
VIRGINIA COPPINGER \_\_\_\_\_ Secretary  
GLADYS COFFEY \_\_\_\_\_ Treasurer







Row One: RUTHERFORD, W. GRAY, CASS, CATHER, REPASS, SAYLES, FAIDLEY, WILSON, C. GRAY, GILLEY.  
 Row Two: SHUPE, KYLE, STICKLEY, ARNOLD, S. McNEW, B. KESTNER, FELTY, B. WYATT, SNOW.  
 Row Three: MR. MILLER, PARRISH, THOMAS, NEAL, C. McNEW, FISHER, HARKLEROAD, PEARMAN, COFFEY.

## BOYS' HI-Y

MR. MILLER \_\_\_\_\_ Sponsor

### OFFICERS

#### Fall

ROY FAIDLEY \_\_\_\_\_ President  
 JIMMY WILSON \_\_ Vice-President  
 BILL SAYLES \_\_\_\_\_ Secretary  
 CHARLES REPASS \_\_\_\_ Treasurer  
 DAVID PARRISH \_\_\_ Sgt.-at-Arms

#### Spring

CHARLES REPASS \_\_\_\_\_ President  
 ARTHUR GILLEY \_ Vice-President  
 BILLY KESTNER \_\_\_\_\_ Secretary  
 DOUGLAS CATHER \_\_\_\_ Treasurer  
 CARY GRAY \_\_\_\_\_ Sgt.-at-Arms

## CHARACTER BUILDERS

The Boys' and Girls' Hi-Y Clubs have as their objective the creation, maintenance, and extension throughout the school and community of a high standard of Christian character.

The Boys' Hi-Y has had several banquets, has taken Santa Pals, and has made a donation on the school movie projector. The Girls' Hi-Y has been a "Big Sister" to Freshman girls, and has filled stockings for underprivileged children.

Both Hi-Y Clubs have taken leading parts in the Tuesday Chapel programs.

Row One: MARY F. THOMPSON.  
 Row Two: LISANBY, FERGUSON.  
 Row Three: PYLE, BREEDLOVE, MORGAN.  
 Row Four: BAUMGARDNER, ADAMS, HAGEY, BABB.  
 Row Five: SPICER, M. R. VANCE, McDONALD, WOLFORD, NEAL, McCLELLAN.  
 Row Six: JOHNSTON, TOWNSEND, EPPERSON, CARNAHAN, SWINEY, SHERWOOD, COPPINGER, MORTON, WHITAKER.  
 Row Seven: CALDWELL, FARRIS, DUTTON, LOGAN, HARKLEROAD, KING, HARROP, THOMAS, NETHERLAND.



## GIRLS' HI-Y

MRS. MARNEY \_\_\_\_\_ Sponsor

### OFFICERS

#### Fall

MARY F. THOMPSON \_\_ President  
 REBECCA LISANBY \_\_\_ Vice-Pres.  
 BETSY FERGUSON \_\_\_\_\_ Secretary  
 WILMA BREEDLOVE \_\_ Treasurer

#### Spring

REBECCA LISANBY \_\_\_\_ President  
 DORIS HAGEY \_\_\_\_ Vice-President  
 LYDIA FARRIS \_\_\_\_\_ Secretary  
 JEAN DUTTON \_\_\_\_\_ Treasurer



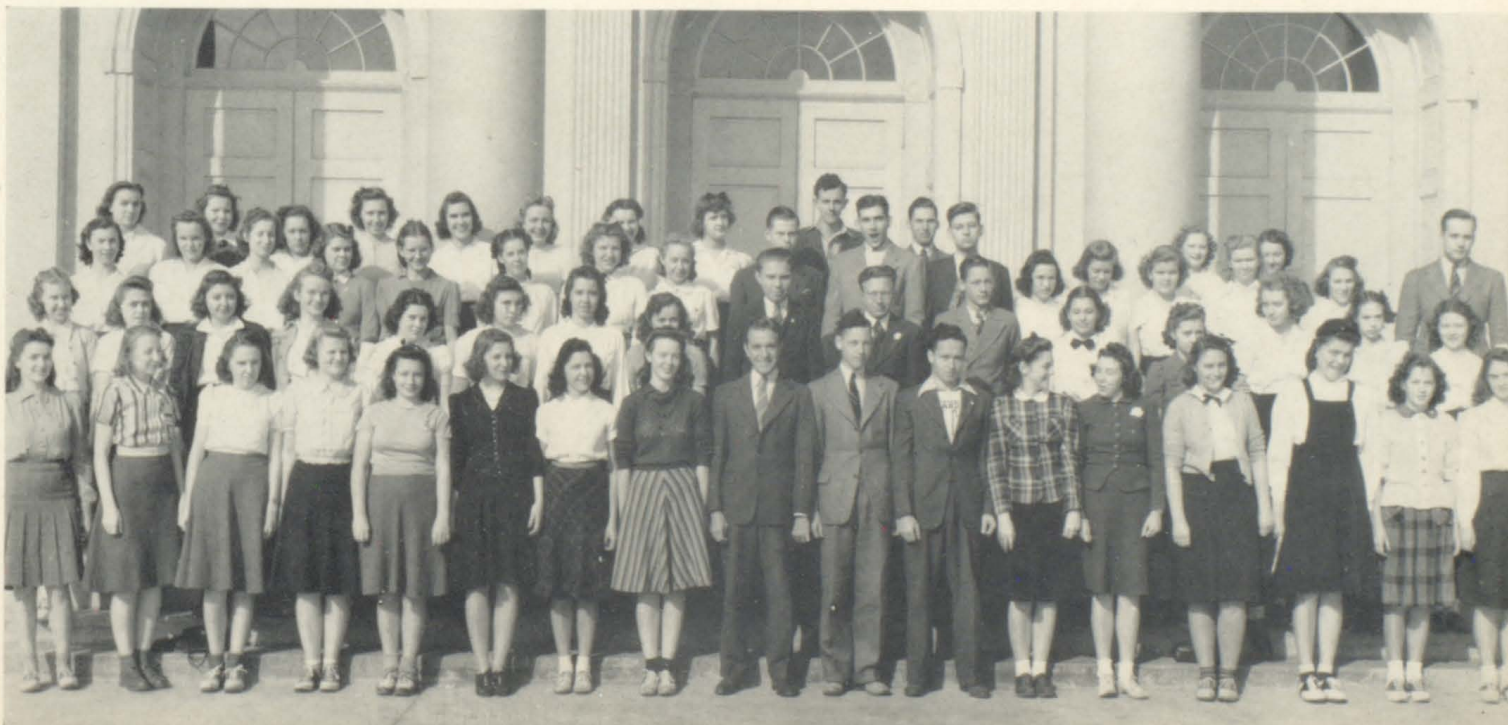


## Orchestra

**Row One:** GRAY, CARSON, DOAK, FAIDLEY, RUCKER, CRAWFORD, TEMPLETON, ROBERTSON, BOYD.  
**Row Two:** NICKELS, KELSO, OVERMAN, FRANCISCO, HELTON, STONE, DAVIDSON, O'DELL.  
**Row Three:** HILTON, BAKER, ALLEY, MACMILLAN, FERGUSON, POST, JONES, MR. WRIGHT.

## A Capella Choir

**Row One:** CALHOUN, MARTIN, GRIMES, BABB, PROFFITT, NETHERLAND, DAY, CALDWELL, HENRY, DRIVER, MCCALL, JOHNSTON, DUTTON, BRADDOCK, KOONTZ, RUTHERFORD.  
**Row Two:** WINGARD, BIRDWELL, TURNER, BEIDLEMAN, FRANCISCO, FLEENOR, MAUK, DEFRIECE, CLAYMAN, DAVIDSON, DENTON, CAMPBELL, MARTIN, SMITH, MCCROSKEY, FRANKLIN.  
**Row Three:** ADAMS, KESSEE, HARROP, THOMPSON, TOWNSEND, STANSBERY, OWEN, LEONARD, FRANCISCO, BOYD, BRUMITT, VANCE, LOGGANS, FAUCETTE, BACHMAN, BANE, MR. WRIGHT.  
**Row Four:** THOMAS, OWEN, FREELS, ROBERTSON, SMITH, HULSEY, WHITAKER, KELLER, KUHNERT, CATHER, BROYLES, SWINEY.







- Row One:** SOLOMON, BEWLEY, M. BARKER, K. BARKER, LISANBY, CALDWELL, KING, TURNER, STONE, ANDERSON, DRIVER, STOFFEL, JONES, INGRAM.
- Row Two:** OVERMAN, KELSO, McEWEN, MCGHEE, MASSENGILL, C. O'DELL, DAVIDSON, MEADOWS, STANLEY, PHILLIPS, REYNOLDS, R. ALLEY, LONG, STEVENSON, HELTON.
- Row Three:** MR. WRIGHT, SLAGLE, FLEMING, C. McEWEN, KUHNERT, NICKELS, PYLE, HOOKS, LEGGETT, HASHBARGER, ROCKETT, BAKER, BUTTERWORTH, HILTON.
- Row Four:** BOYD, McCALL, McCLELLAN, JONES, A. O'DELL, STANSBERRY, M. O'DELL, FERGUSON, POST, HENRY, FRANCISCO, CLAYMAN, MACMILLAN.

## Tennessee High Band

The Music Department of Tennessee High School consists of an orchestra that plays light classical music, an a capella choir, and a 60-piece band that marches during the football season, and turns to concert music in the Spring. On Friday, December 13, the orchestra, the choir, and the band appeared in a joint concert. The music was well rendered and well received. On the night of March 14, the operetta "On In A Blue Moon" was presented to a capacity audience. Both the band and the choir entered state-wide competition at Johnson City. The purchase of new musical instruments and the growth of student interest in music suggests that the Music Department will possibly make progress next year equal to or greater than the advancement made this year.



**NEIL H. WRIGHT**

Director of Tennessee Band, Choir and Orchestra

### BAND STAFF

BEN McEWEN	Sergeant, Trumpets
BILLY TURNER	Sergeant, Trombones
WARREN SLAGLE	Sergeant, Clarinets
GARNET McCALL	Sergeant, Basses
HUGH POST	Sergeant, Drums
STUART INGRAM	Field Major
BOBBY SOLOMON	Twirling Major
PHYLLIS BEWLEY, MARGARET BARKER, KATHERINE BARKER	Majorettes
EMALEE CALDWELL, REBECCA LISANBY	Sponsors



**LEE STOFFEL**

Student Director of Tennessee High School Band.





# A T H L E T I C S







**Row One:** R. CARRIER, CAMPBELL, C. WYATT, W. GRAY, B. WYATT, COFFEY, STICKLEY, R. FAIDLEY, K. SMITH, KYLE, GILLEY, C. GRAY, A. FELTY, PARRISH, COLVARD, V. CARRIER.  
**Row Two:** G. FELTY, WAYLAND, NICKLES, JONES, BRAY, BLEVINS, LESLIE, SKINNER, HAGY, R. SMITH, LAMBERT, DONALDSON, BARKER, HAYES, WINDERS, BREEDING, BIBEE, HARKLEROAD.  
**Row Three:** ADAMS, CONNER, S. FAIDLEY.

# Viking Football

The football season of 1940 was one of the most successful that Tennessee High School has enjoyed in the past decade. Playing against the strongest teams in this section, Coach Solomon's boys came through a ten-game schedule with seven victories and three defeats—a record that has not been equaled in the memory of the present student generation.

Under the leadership of Captain Kyle, the 1940 Vikings turned in victories over Jonesboro, Teachers' Freshmen, Erwin, Elizabethton, Knoxville Central, Morristown, and Virginia. Only Knoxville City, Kingsport, and Johnson City were able to defeat the maroon-clad warriors. In no game did Tennessee go scoreless; and when the final count was in, the Vikings had run up 187 points to their opponents' 70. Certainly Coach Solomon was not mistaken when he said, "This is the best football team I have ever coached—the best by two touchdowns."

And—lest we forget it—these Vikings gave Virginia her seventh straight licking, 28-0.



Top: COACH SOLOMON  
 Bottom: COACH ESSER





**BRUCE CAMPBELL**  
Fullback



**VIVIAN CARRIER**  
Fullback

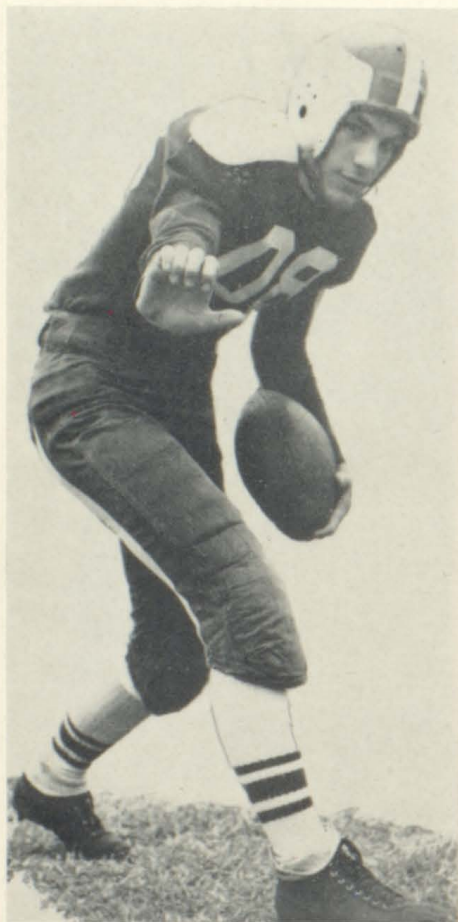


**DUKE COFFEY**  
Right End



**MARION COLVARD**  
Center

## *Our Lettermen*



**CAPTAIN GILBERT KYLE**  
Halfback

The most remarkable feature of 1940's football squad was the balance which characterized the team as a whole. Through ten difficult games, it was one for all, and all for one. The boys blocked, tackled, kicked, and passed as a unit, not as individuals. In every game they displayed that all important spirit of cooperation which is the basic factor in the makeup of any good football team. Tennessee High School's 1940 football squad was not built around the play of any one individual star; it was an efficient machine made up of some dozen and a half stars. A strong line, an able backfield, and ample reserve power were the essentials of the 1940 squad.

1941 will see the Vikings without the services of this year's most reliable men. Lost to the team are Captain Kyle, Bud Gilley, Karl Smith, Cary Gray, Duke Coffey, Basil Wyatt, Marion Colvard, Chink Faidley, Allen Felty, and All-East Tennessee Fullback Vivian Carrier. This does not mean, however, that Coach Solomon will be entirely without material upon which he may build. Warren Phillippi, who was not eligible in 1940, and Don Stickley will Captain the 1941 Vikings. Other returning lettermen are Dave Parrish, Charlie Wyatt, Wimpy Gray, Bill Tom Wayland, Bruce Campbell, and Clyde Smith.





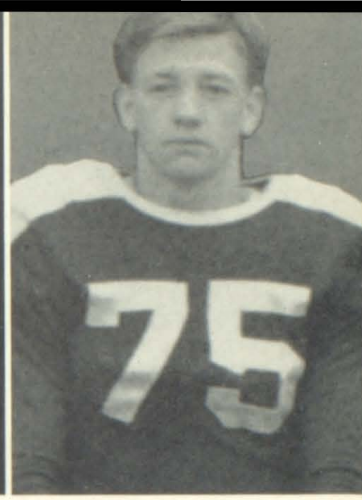
**ROY FAIDLEY**  
Right Guard



**ALLEN FELTY**  
Left Guard



**ARTHUR GILLEY**  
Halfback



**CARY GRAY**  
Halfback



**WIMPY GRAY**  
Left Guard



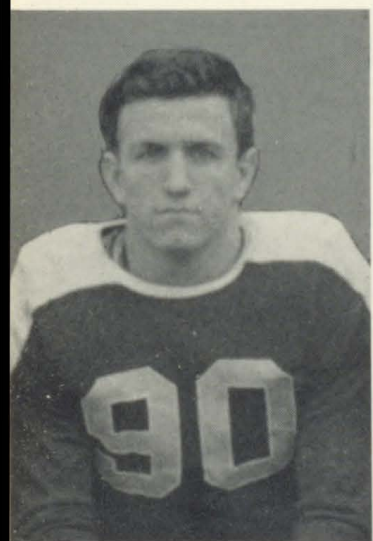
**DAVID PARRISH**  
Left Tackle



**CLYDE SMITH**  
Left Tackle



**KARL SMITH**  
Quarterback



**DON STICKLEY**  
Right Tackle



**BILL WAYLAND**  
Halfback



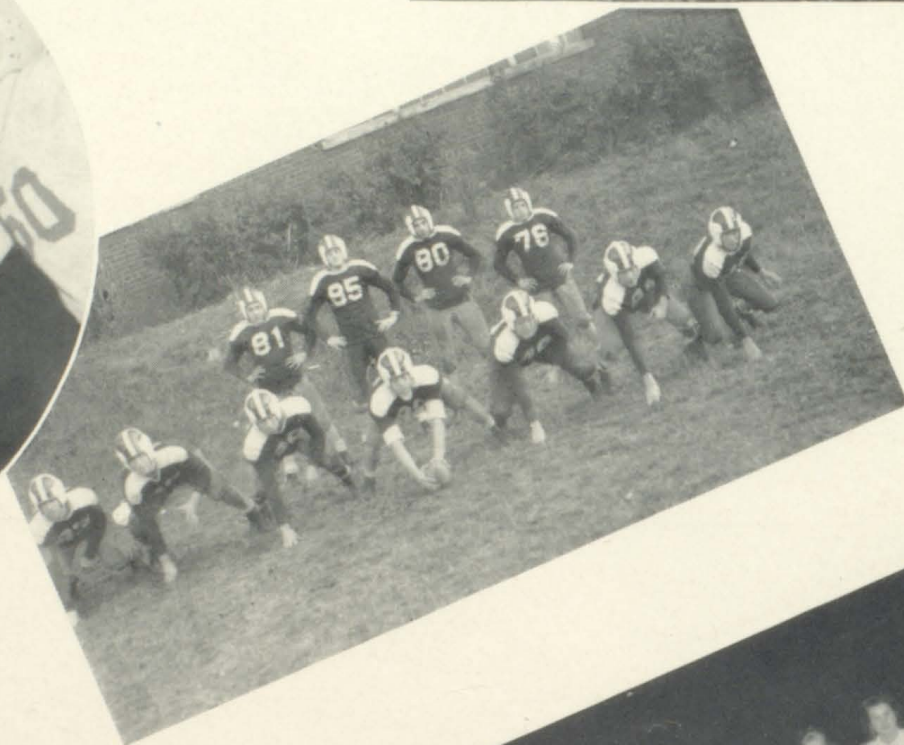
**BASIL WYATT**  
Left End



**CHARLES WYATT**  
Right Tackle



RIGHT: The staunch Viking forward wall holds Johnson City back from the double stripes. BELOW: Captain Kyle shakes hands with Captain Lance of Elizabethton before the first whistle sounds.



RIGHT ABOVE: Varsity Squad goes through its paces. RIGHT: Cheerleaders Patrick, Wilson, Barker, Epperson, and Tate lead the crowd in peppy cheers and salutes.





# 1940 Scores

Tennessee.....	60	Jonesboro .....	0
Tennessee.....	12	Teachers' Fr. ....	0
Tennessee.....	19	Erwin .....	6
Tennessee.....	13	Knoxville City .....	14
Tennessee.....	6	Johnson City .....	19
Tennessee.....	25	Elizabethton .....	6
Tennessee.....	1	Knoxville Central .....	0
Tennessee.....	7	Kingsport .....	13
Tennessee.....	28	Morristown .....	12
Tennessee.....	28	Virginia .....	0

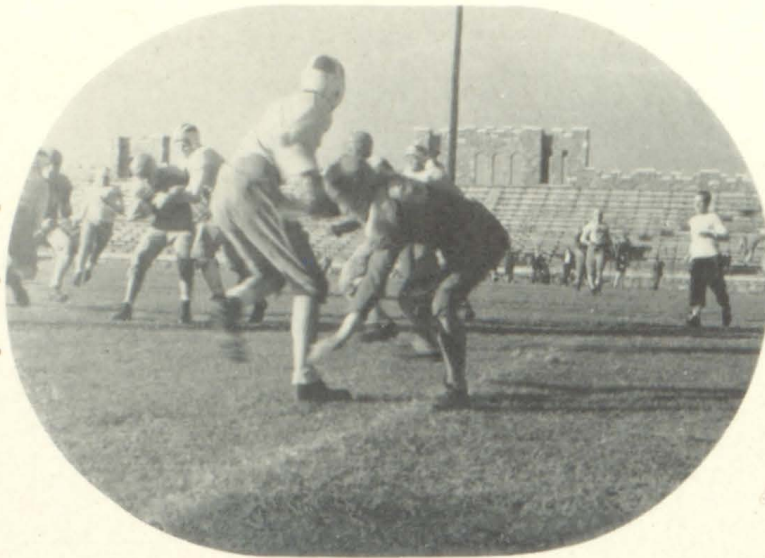


RIGHT: Band Sponsors Lis-anby and Caldwell proudly exhibit the Maroon and White. BELOW: Smith leads running attack against Johnson City Hilltoppers.



RIGHT: Gilley goes over standing to help defeat Morristown.





## Here's the Record

**September 9**—Tennessee ran up the curtain on the 1940 season in Municipal Stadium with a crushing 60-0 victory over the feeble, toothless Tigers from Jonesboro.

**September 13**—Playing twice within the week, the Vikings invaded the collegiate ranks to hand Johnson City Teachers' Freshmen a sound spanking to the tune of 12-0.

**September 20**—Running their string of victories to three, the maroon-clad boys drew their first Big Five blood of the season by administering Erwin a 19-6 defeat.

**September 27**—The breaks were bad, the luck was hard, and Knoxville City High carried off a heart breaker by edging out the fighting Tennesseans 13-14.

**October 4**—With three victories and one defeat behind them, the Vikings made their second Big Five bid against Johnson City. The Hilltoppers, however, carried off the bacon, 19-6.

**October 18**—Bounding back into the win column with a bang, the Vikings turned loose real power to gain a crushing victory over Elizabethton, 25-6.

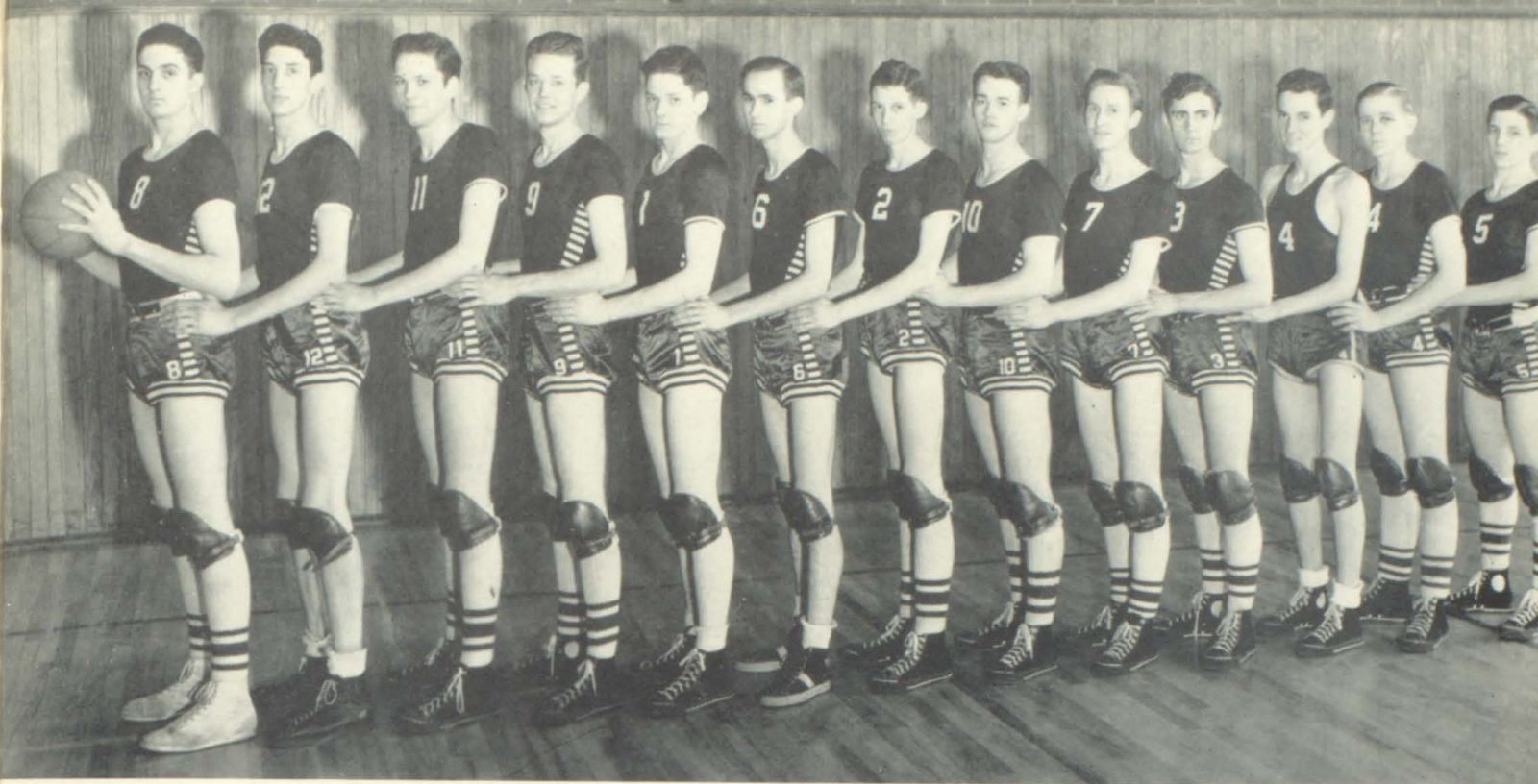
**October 25**—Knoxville Central outscored the Vikings, but when the smoke cleared away, it was found that the Knoxvilleians had used an ineligible man. The game went to Tennessee, 1-0.

**November 1**—For four thrilling quarters, Kingsport and Bristol fought up and down the field. When the ladies in the stands came to, they found that Kingsport had carried off a thriller, 13-7.

**November 8**—Angry about the Kingsport defeat, and hungry for victory, the fighting Vikings came back with a rush to avenge themselves on hapless Morristown, 28-12.

**November 15**—Virginia was all set to hand Tennessee her first city defeat in seven years; but the snow, freezing weather, and the Virginia efforts combined could not keep the Vikings from winding up their best season in years with a brilliant 28-0 victory.





CHARLES NEAL, BUD CLARK, DAVID PARRISH, FRANK THOMAS, STUART INGRAM, BILL SAYLES, BOBBY SOLOMON, KARL SMITH, SAM LEE, JULES SMYTHE, MAC PHIPPS, CHARLES HARRIS, WIMPY GRAY.

# Viking Basket-ball

In spite of injuries, ineligibilities, and various other forms of hard luck, the Viking basketball squad came through the 1941 season with a tiny bit of black ink showing in the ledger. Out of the thirty-three games played, the boys won eighteen and lost fifteen. They ran up 1,055 points against 1,016 for their opponents.

The season, however, was redeemed from mediocrity by the brilliant basket-ball the Vikings displayed in their three-game series with Virginia High. The Virginians got off to a good start with a 26-30 victory in the first game of the series, but the Vikings came back with a 34-31 win in the second game. When the third and final match came off, Virginia was forced to swallow a crushing 39-20 defeat. This gave the Vikings the city championship, and that always makes the season a success.



COACH ESSER



COACH SOLOMON



# Vikings On

**LETTERMEN:** WIMPY GRAY, Guard;  
CHARLES HARRIS, Guard; SAM LEE,  
Guard; CHARLES NEAL, Center.



SMITH and PARRISH lead attack  
against Bradley County.

Dec. 5	Tenn. 17	Mary Hughes	22	Jan. 14	Tenn. 40	Erwin	31
Dec. 7	Tenn. 32	Bluff City	30	Jan. 17	Tenn. 7	Bradley County	41
Dec. 10	Tenn. 20	Emory Frosh	25	Jan. 24	Tenn. 32	Elizabethton	34
Dec. 12	Tenn. 28	Blountville	15	Jan. 25	Tenn. 32	Chattanooga	36
Dec. 14	Tenn. 23	Bluff City	30	Jan. 28	Tenn. 32	Johnson City	27
Dec. 17	Tenn. 21	Blountville	20	Jan. 31	Tenn. 59	Redlands, Fla.	34
Dec. 19	Tenn. 39	Mary Hughes	22	Feb. 1	Tenn. 32	Knox Central	27
Jan. 10	Tenn. 21	Knox City	29	Feb. 4	Tenn. 33	Holston Valley	32

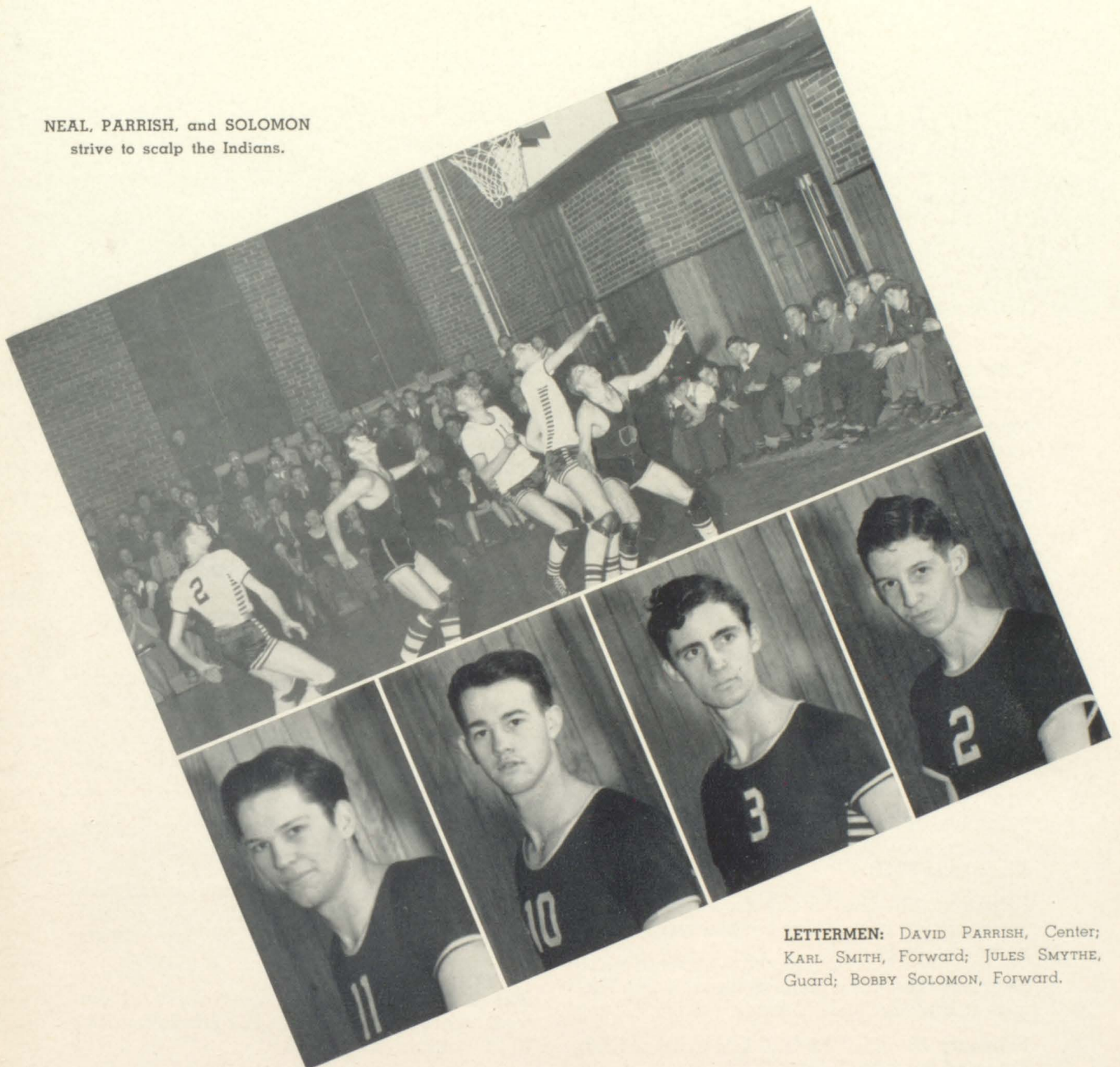


# The Hardwood

Feb. 7	Tenn. 31	Kingsport	36
Feb. 8	Tenn. 31	Elizabethton	21
Feb. 10	Tenn. 26	Virginia	30
Feb. 12	Tenn. 44	Morristown	31
Feb. 12	Tenn. 17	Knox Central	27
Feb. 13	Tenn. 22	Knox City	45
Feb. 14	Tenn. 37	Chattanooga	34
Feb. 14	Tenn. 36	Bradley County	46
Feb. 15	Tenn. 34	Mosheim	36

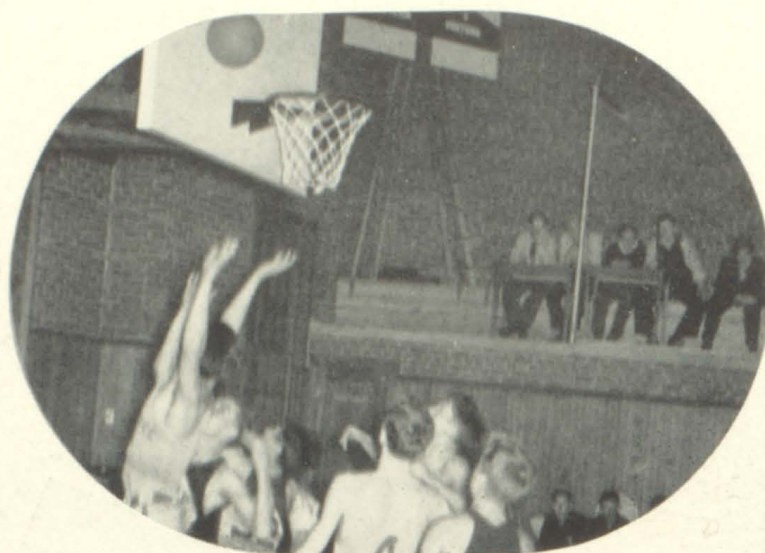
Feb. 18	Tenn. 40	Erwin	32
Feb. 21	Tenn. 65	Morristown	32
Feb. 22	Tenn. 34	Virginia	31
Feb. 25	Tenn. 31	Johnson City	36
Feb. 28	Tenn. 34	Kingsport	44
Mar. 1	Tenn. 42	Holston Valley	36
Mar. 4	Tenn. 22	Sullivan	24
Mar. 13	Tenn. 39	Virginia	20
Totals	1055		1016

NEAL, PARRISH, and SOLOMON  
strive to scalp the Indians.



LETTERMEN: DAVID PARRISH, Center;  
KARL SMITH, Forward; JULES SMYTHE,  
Guard; BOBBY SOLOMON, Forward.





## Scorebook Notes

**January 10**—The Knox High Trojans handed the Vikings their first major defeat 29-21.

**January 14**—Karl Smith led the Tennesseans over Erwin with 17 points. The score, 40-31.

**January 17**—The worst defeat in years was administered the Vikings by Bradley, 41-7.

**January 24**—A field goal in the final minutes gave Elizabethton a 34-32 victory.

**January 25**—The Chattanooga Central Purple V. C. Pounders outshot the Vikings 36-32.

**January 28**—Led by Neal the Vikings beat Johnson City, 32-27.

**February 1**—The Vikings, handling the ball like professionals, defeated the Knox Central Bobcats, 32-27.

**February 4**—The Vikings won a poorly played game from Holston Valley by a single point, 33-32.

**February 7**—Kingsport won a hard fought game as Tennessee went down 36-31.

**February 10**—Playing in the dark hole of Calcutta, the Vikings were defeated by the Virginians 26-30.

**February 12**—The Morristown Hurricanes were blown into defeat by the rangy Tennesseans, 44-31.

**February 12**—Knox Central handed the Vikings a bruising 27-17 defeat.

**February 13**—Bill Wright & Co. of Knox High defeated the Bristol boys 45-22.

**February 14**—Charlie Neal, scoring 17 points, upset the highly touted Chattanooga Central quintet 37-34.

**February 15**—A field goal in the closing seconds gave Moseheim a victory over Coach Solomon's boys 36-34.

**February 18**—Neal and Smythe, dividing 27 points, set a hot pace as Erwin was defeated 40-32.

**February 21**—Morristown was snowed under by the Vikings 65-32.

**February 22**—The Vikings evened the City Series by defeating Virginia High 34-31. Neal, Harris, and Solomon were high pointers for the night.

**February 25**—The Vikings, definitely having an off night, were defeated by Johnson City 31-36.

**February 28**—Kingsport was a bit too good. The score, 44-34.

**March 1**—Tennessee put the heat on Holston Valley with a bruising defeat of 42-36.

**March 4**—Coming from 16 points behind, the Vikings fell 2 points short of a victory and were eliminated in the District Tournament by Sullivan High, 24-22.

**March 13**—Playing their best game of the year, the Vikings took the city championship from Virginia, 39-20.





**Top:** A smash in volley-ball, KATHERINE MORTON practices foul-pitching.  
**Bottom:** Ping pong doubles, basket-ball teams in action.  
**Insert:** FRANCES E. COMBE, Director of Girls' Physical Education.

## Gym Femmes

Among the outstanding girls' sports at Tennessee High, and one in which all may compete, is the foul-pitching tournament. Leon Fleenor, a guard, placed first in this tournament, Gladys Coffey second, and Betsy Ferguson third.

Other tournaments are held for the girls in volley-ball, ping pong, basket-ball, and baseball. This year the Juniors won the laurels in both the basket-ball and volley-ball tournaments. For the first time in the history of Tennessee High, one of our girls' basket-ball teams defeated the team from Virginia Intermont College in a practice game.

Other activities included in the athletics program for girls are folk rhythms, tap-dancing, paddle badminton, deck tennis, and the minor sports of bowling and tinikoits. The department provides an active and an inactive program so that all girls will be able to participate in physical education without injury to their health.





**Top:** DORIS NEAL, Basket-ball Manager; GLADYS COFFEY, Foul Pitching Manager; BETSY FERGUSON explains fundamentals of softball to Girls' Athletic Club; BETTY BELL BURROW and ANN BACHMAN, Ping Pong Managers; BETTY CAMPBELL, Volley-ball Manager.

**Bottom:** Junior Volley-ball Champs; MARY LEE LYNCH, Official Volley-ball Referee; Senior Volley-ball Team, Runners-up in Tournament.

## *Muscle Builders*

This year there was formed in the Physical Education Department one of the new and outstanding clubs of Tennessee High—the Girls' Athletic Club. This club fosters girls' participation in athletics, and organizes and manages all girls' intramural activities. The officers are: Betsy Ferguson, President; Evelyn McClellan, Vice-President; Virginia Copping-er, Secretary; and Gladys Coffey, Treasurer. The club membership numbers forty-five. The Girls' Athletic Club has helped to make this year one of the best in the history of girls' sports at Tennessee High. This club promises to take its place among the top-ranking organizations of B. T. H. S.





F  
E A T U R E S





# Some Seniors We Know



**FALL OFFICERS**

GILLEY, LISANBY, SPICER, COFFEY.



**UP A TREE**

NANCY KING



**SPRING OFFICERS**

COPPINGER, FAIDLEY, SPICER, K. SMITH



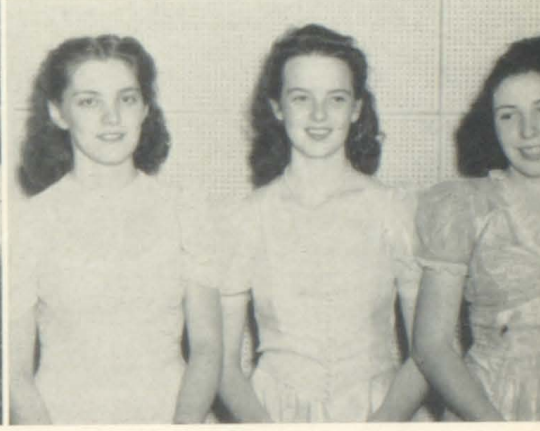
**7492x6185 IS . . . ?**

J. BARKER, KESTNER, B. McEWEN



**GOOD FOR LUMBAGO**

ELEANOR EPPERSON



**MUSICAL MISSES**

JOHNSTON, CALDWELL, DUTTON



**YOU SAID IT, TAXPAYER**

BILLY TURNER



**TIME OUT**

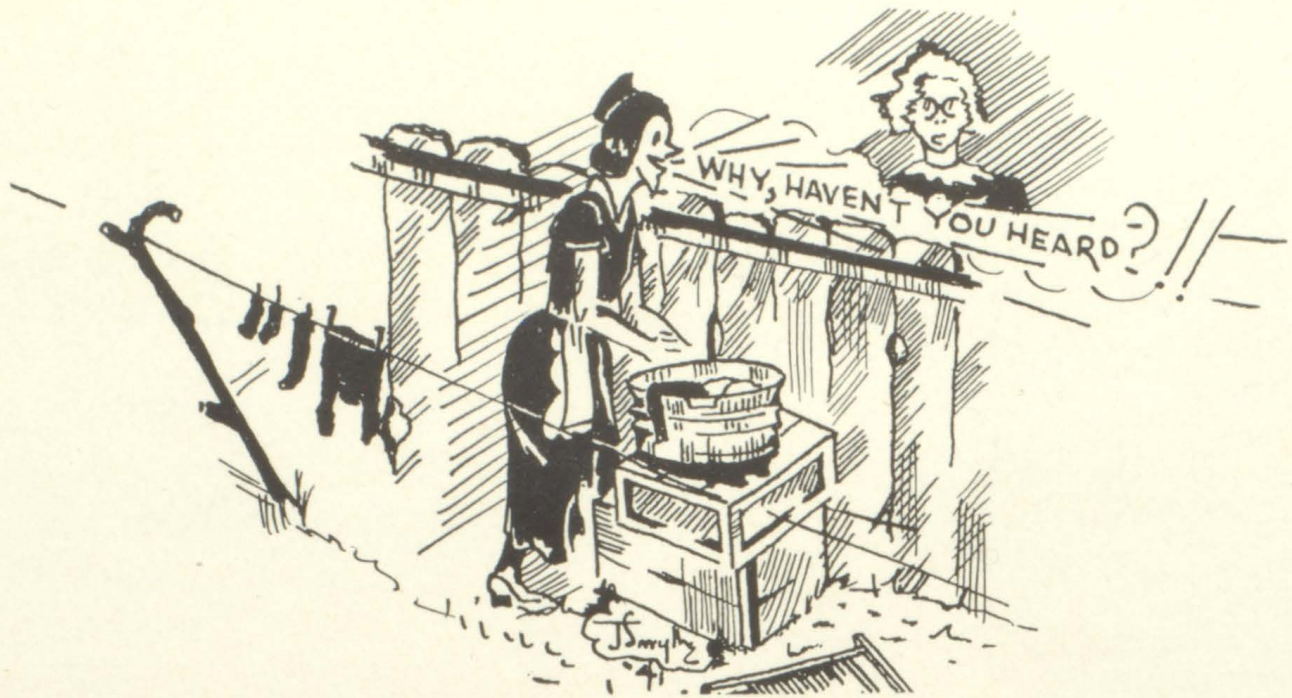
DAVID PARRISH



**A FRAME-UP**

JIMMY WILSON





Mr. Fouch is expecting a call any moment from Uncle Sam to join the boys in the "cacky britches". Craig Alexander Middleton Rockett III hopes someday to become a United States senator. In the basket-ball game between the Boys' Hi-Y and the Faculty, Mr. Eggers scored the first two points. Ben McEwen and Warren Slagle represented Tennessee High in the annual band clinic January 22-25 at Little Rock, Arkansas. According to Cary Gray, Dr. L. R. Carrier has been actively engaged during the past few months in research work on the horrible disease, "lugubritis."

A snake which Theodore Cardwell brought to school with him escaped in Assembly. Miss Owen likes to stand at her classroom window and watch stray dogs playing on the school lawn. David Parrish contracted a chronic case of "pink eye" from reading the **Police Gazette**. Don Stickley's hitch-hiking trip to the Sugar Bowl game ended at Johnson City. Billy Turner, Joe Combs, and Albert King represented Tennessee High at Volunteer Boy's State last year . . . Jules Smythe, Herbert Riordan, Robert Boyd, Lyle Jones, and John White will go this year. Alva Spicer christened a flagship of the Pennsylvania Central Airlines at the Tri-City Airport.

"Doctor" Bob Mauk is working for his M. A. in Mr. Sadler's English literature class. Ben McEwen plays first trumpet in Erman Vick's orchestra; Billy Turner was trombone soloist in the Peabody Clinic Band last summer. Mr. Sadler goes in for aviation; Miss Fortune and Miss Baxter are enthusiastic bowlers; Mr. Gillingham sells insurance. Mary Frances Thompson and Henry Barker are the youngest Seniors. Two members of the class of 1940, Kathryn Hill and Ann Spargur, are engaged; Claudine Herron and Nell Blackley are married. Rebecca Lisanby doesn't like to be called "Goldie". Buddy Williams and George Fletcher aspire to become artists.

Evamay Furse caught a baby shark at Folly Beach, S. C. last summer. Robert Boyd, a baritone, sang tenor in **Once in a Blue Moon**. Marthina De Friece, former Tennessee High scholar, now boards at Sullins. Jean Dutton and Doris Mauk have never been kissed (?). Pat Repass doesn't like girls, but they get along all right with him. Wayne McDonald and Evamay Furse curled their eyelashes in the display window of Home Furniture Company. Nancy King sold a B. T. H. S. sticker for a meal ticket. Charles McEwen and Sam Beard are announcers for WOPI. Jules Smythe drew the caricatures in the front and back of this CADMEA. Six different people wrote the material on this page.



# The Photogenic Tennessee High



"Hello, folks! This is your CADMEA photographer talkin'. You know, the other night as I was looking over the snapshots I have taken this year, the thought hit me that **you** might like to see them too; and that you might even like to hear the story behind them. So here 'tis . . ."

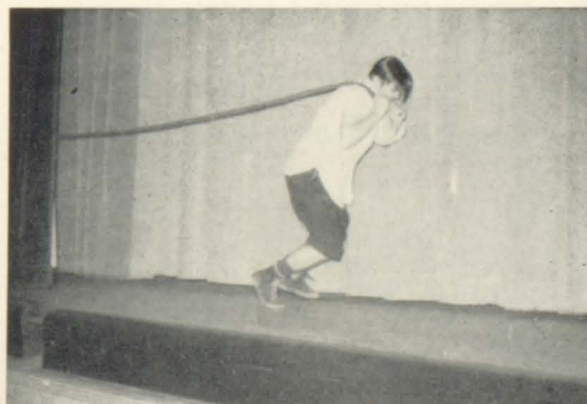
"Well, when we came back to our beautiful school last September, one of the first things of importance was the dedication of a big flag and flagpole by the Junior Civitans. Soon after that, we got lockers, assembly programs began, and things really started going."



"Our best football season in the last decade started off in a big way with pep meetings and school spirit drives. Band students started taking individual lessons, and the band as a whole sure did us up proud on the gridiron this year."



"As the year progressed, we had every imaginable type of entertainment presented in assembly, some educational, some merely entertainment."







"You know, we claim to have one of the best educational systems in the state. Some of my snaps should go a long way in proving that claim."

"Our Diversified Occupations program was first initiated into Tennessee High three years ago. I believe that this department



has made more progress this year than ever before. The D. O. courses afford students the opportunity of working in the field they will probably choose later, and, at the same time, they receive credit toward graduation. D. O. students take two subjects and their work is counted as two others.

"Diversified Occupations students work in practically every line. Tennessee High stu-



dents mend ailing cars, manufacture clothing, practice secretarial work, and even go in for radio engineering."



"The buzz of sewing machines and the crashes of cooking utensils divert our at-



tention to the Home Economics department, where Tennessee High girls learn how to become good wives."



"Crash! Rip! Bang, bang! Noises such as these draw our attention to the wood-working shop, where boys learn how to create objects of beauty from wood. Courses



in mechanical drawing and shop are open to all students, but, as a rule, the boys are dominant in these classes."

"At the middle of the year when every



"Most of the rest of my snaps are class pictures. The braver Seniors found out that they weren't so brave after all when they started chemistry and physics. Students



whose intellectual tendency lies in a scientific line receive up-to-date training and instruction in modern, well-equipped laboratories."



organization was in full swing, the music department presented the band, choir, and orchestra in a joint concert. On the night of December 13, the 55-piece choir rendered Christmas music. Interspersed with the choral music was the playing of stirring marches and overtures by the 60-piece Tennessee High Band."







"In vacant periods, students have the opportunity of using a library well equipped with reference books and popular magazines. In Latin classes we studied grammar and read of the exploits of the Roman heroes. In the Business De-

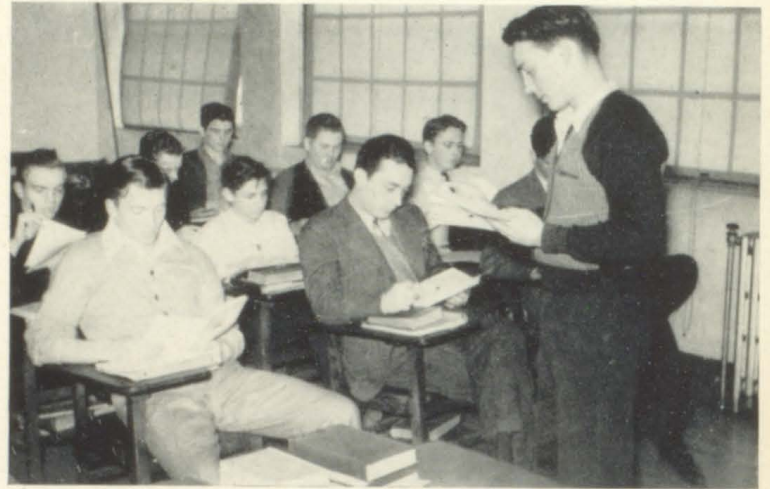


partment, Tennessee High students receive instruction in typing, book-keeping, and shorthand. In another section of the language department, students are able



to study French and Spanish. In economics class they study government and finances."

"Well, that's just about all of my snapshots, folks. Every time I turn through them,



I become more conscious than ever before of the physical and incorporeal beauty of that institution for learning we call Tennessee High School. Do you?"





•  
C  
L  
A  
S  
S  
•



•  
1  
9  
4  
4  
•

1940 Graduates of Tennessee High at King College

## KING COLLEGE

BRISTOL, TENNESSEE-VIRGINIA

An Excellent Four-Year Senior College, with Hundreds of Alumni in Bristol

CATALOG ON REQUEST

---

### DEAR DIARY....

**Sept. 9**—Half the students reported; the other half must have forgotten they ever went to school.

**Sept. 11**—Classes really got under way today, but we are still changing our schedules.

**Sept. 12**—The Junior Civitans dedicated a big flag-pole and flag to the school this morning. Thanks, we appreciate it!

**Sept. 13**—The Seniors were visited by their **second** magazine salesman. I wonder why Charles P. likes them?

**Sept. 16**—The Girls' Hi-Y held its first meeting; watch out for us later.

**Sept. 17**—Lockers were finally given out . . . Ugh! What a long wait we had.

**Sept. 18**—Don't you think Dot Pair wears the snappiest clothes to school?

**Sept. 19**—More new girls! Have you seen Betty and Adrienne de Bord and Dorothy Ashburner?

**Sept. 20**—By beating Erwin 19-6, Tennessee High reached a new level—and so did Eleanor's skirt.

---

### RALPH'S CONFECTIONERY

Corner State Street and Penn. Avenue

"Ralph's Better Popcorn"

## Sure!

Insure In Sure  
Insurance

**ROBERT M. EASLEY**

FIRE-LIFE-CASUALTY

Union Trust Building



## VIRGINIA INTERMONT

### AN ENDOWED JUNIOR COLLEGE

Accredited by the Southern Association of Colleges and all other agencies that accredit junior colleges, including the University of the State of New York.

#### STANDARD COURSES:

1. Classical two-year courses admitting to Junior Year in Senior Colleges and Universities. 2. General Cultural Courses (largely elective) for those not planning to spend more than two years in college. 3. Home Economics. 4. Business and Secretarial Courses. 5. Art. Fine and Applied Art including Costume Design, Interior Decoration and China Painting. 6. Speech and Dramatic Art. 7. Physical Education. 8. Music: Piano, Organ, Voice, Violin, Theory. 9. High School.

Sports for every student: Archery, basket-ball, field ball, gymnastics, hockey, horseback riding, riflery, swimming, tennis, track, tumbling, volley-ball.

Beautiful new Day Students Social Center building constructed in 1940 contains study room, locker and powder rooms, large club room with knotty pine paneling, pegged floor, large stone fireplace and comfortable furnishings.

#### For Catalogue and Full Information Apply to

H. G. NOFFSINGER, President,  
VIRGINIA INTERMONT COLLEGE, Bristol, Virginia

---

#### DEAR DIARY....

- Sept. 24**—We had our first chapel program today; it went over swell. It was sponsored by the Bible Club.
- Sept. 25**—It rained all day.
- Sept. 26**—Hm-m-m. Visitors from Greeneville to see what our new school looks like.
- Sept. 30**—CADMEA drive gets under way. Have you bought your heart's desire yet?
- Oct. 1**—Miss Smith said you can put 18 baby kangaroos in a tablespoon. Must be a pretty large spoon.
- Oct. 3**—We had explosions in Chemistry, but they weren't nearly loud or effective enough.
- 

#### FIFTY-TWO YEARS OLD . . . .

#### YET YOUNG IN IDEAS

If "life begins at 40," we've a twelve-year jump on life . . . and for those young folks who want things "young", we've the liveliest fashions for young life. For though we've served four generations and have attained our Golden Anniversary, we are entirely in tune with the lives and needs of the younger folk . . . and our stocks are filled with fashions expressly for them.

**THE H. P. KING COMPANY**



## A WORD TO SENIORS

. . . . Many of you are going out into life. Some of you are entering college. Regardless of which, always remember that you are judged by your appearance . . . . and nothing aids your appearance more than clean clothes.

LAUNDRY

***Troy***

DRY CLEANING

---

The Smart, Well-Dressed Man is Outfitted  
By . . .

**ReMINE-GOBBLE, Inc.**

Paramount Building

---

### DEAR DIARY....

Oct. 4—A wonderful pep meeting, but J. C. beat us 19-6.

Oct. 7—Another "Blue Monday" and a Hi-Y meeting.

Oct. 9—Heard Seniors will have "I. Q." tests tomorrow.

Oct. 10—Hours and hours of Senior "I. Q." tests.

Oct. 11—We had a nice assembly program today. It dealt with the early history of Tennessee.

Oct. 14—Girls Hi-Y begins initiation today. What frightful looking creatures we will see tomorrow!

Oct. 15—No school. Yippe!

---

**FIELD'S  
STUDIO**

of

**BEAUTIFUL PORTRAITS**

Bristol, Tennessee

Compliments of

**THE LITTLE STORE**

6-8-10 PENN. AVE.

"Where Bristol Saves"

---

"LEARN IT RIGHT"

**Bristol Commercial College**

Bristol, Tenn.



Congratulations and Best Wishes for Your Future

**DUTTON & DUTTON**

General Contractors

WHEN ITS TO BE BUILT OR REMODELED

Call 1337-W

SHELBY STREET

BRISTOL, TENN.

**R. J. Mottern**

Congratulations to Seniors of '41

Commissioner of Streets and  
Public Property

Best Wishes to the Seniors  
For a Success

**George W. Vance**

COMMISSIONER OF FINANCE

**DEAR DIARY....**

Oct. 16—It is said that "anyone can blow it out"

Oct. 18—Juniors introduced their class officers, class colors, motto, and their class queen in assembly.

Oct. 23—The Boys' Hi-Y organized a club at Holston Institute today. Report cards.

Oct. 24—Today Miss Smith said, "Ah, Christmas has come at last."

Oct. 25—Band went to Knoxville with team. The team and band stayed until Saturday to see U. T. Florida game.

Oct. 30—K. Robertson, J. Dutton, and C. Crawford went to Knoxville this morning to represent Tennessee High in the All East Tennessee Chorus.

Compliments of

**BALL BROTHERS, Inc.**

**FURNITURE**

**Furrow Electric Co.**

Modern Methods of Safe Electric  
Wiring and Correct Lighting

Kelvinator Refrigerators  
Electric Ranges

**"EVERYTHING ELECTRICAL"**

408 State St.

Phone 162

**McChesney & Lester**

JEWELERS

Gifts for Graduation



You Are Always Welcome  
AT MINOR'S

EYE IT

TRY IT

BUY IT



McCLURE MOTORS

DEAR DIARY....

Nov. 1—Yippel! Out of school again—teachers meeting in Knoxville.

Nov. 4—The Boys' Hi-Y goes on a hay-ride tonight. Oh-h-h, I can feel that hay coming through.

Nov. 5—Do you know what equation and valence is all about? Who invented the stuff anyway?

Nov. 8—We beat Morristown 28-12. The new members of the G. Hi-Y had to dress up and run a foot race at the game.

Nov. 11—A delightful Armistice Day Program was presented. General Howell was our distinguished guest.

Compliments of

**HOLSTON SMALL  
LOAN CO.**

**KINGSPORT OFFICE SUPPLY CO.**

OFFICE EQUIPMENT

Machines and Supplies

Kingsport, Tennessee

Our Motto: "Always the Best"

**BRISTOL FLORAL COMPANY**

534 STATE STREET

BRISTOL



## MOORE'S MANUFACTURING COMPANY

Potato Chips, Peanuts, Popcorn, Peanut  
Butter Sandwiches, Candies

---

## BUNTING'S DRUG STORE

Candies

Soda

Kodaks

Films

and Finishing

---

### DEAR DIARY....

**Nov. 13**—Dorothy Ashburner and Karl Smith both came to school with scratches on the right sides of their faces.

**Nov. 14**—What happens when you add nitric acid to a mixture of zinc and sodium hydroxide with hydrochloric acid???

**Nov. 15**—What a day for football! Snow! It's wonderful! We beat Virginia High 28-0.

**Nov. 18**—We haven't recovered from the effects of the football Friday night. Oh, what a game!

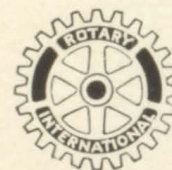
---

"Builders of Good  
Citizenship"



**BRISTOL CIVITAN CLUB**

ROTARY CONGRATULATES



**The Class of 1941**

---

## BRISTOL OFFICE SUPPLY COMPANY

Office Supplies and Equipment

**All Makes of Typewriters Rebuilt, Overhauled and Repaired**

Moore Street, Bristol, Virginia

Phone 200

---





# DEER







# TEACHER

- Smythe '41





