

THE CADMEA OF

NINETEEN HUNDRED THIRTY NINE





Ex Libris



The

CADMECA

Editor



JACK COWAN

Business Manager

FRANK DEFRIECE


Sponsor

BERNEY BURLESON

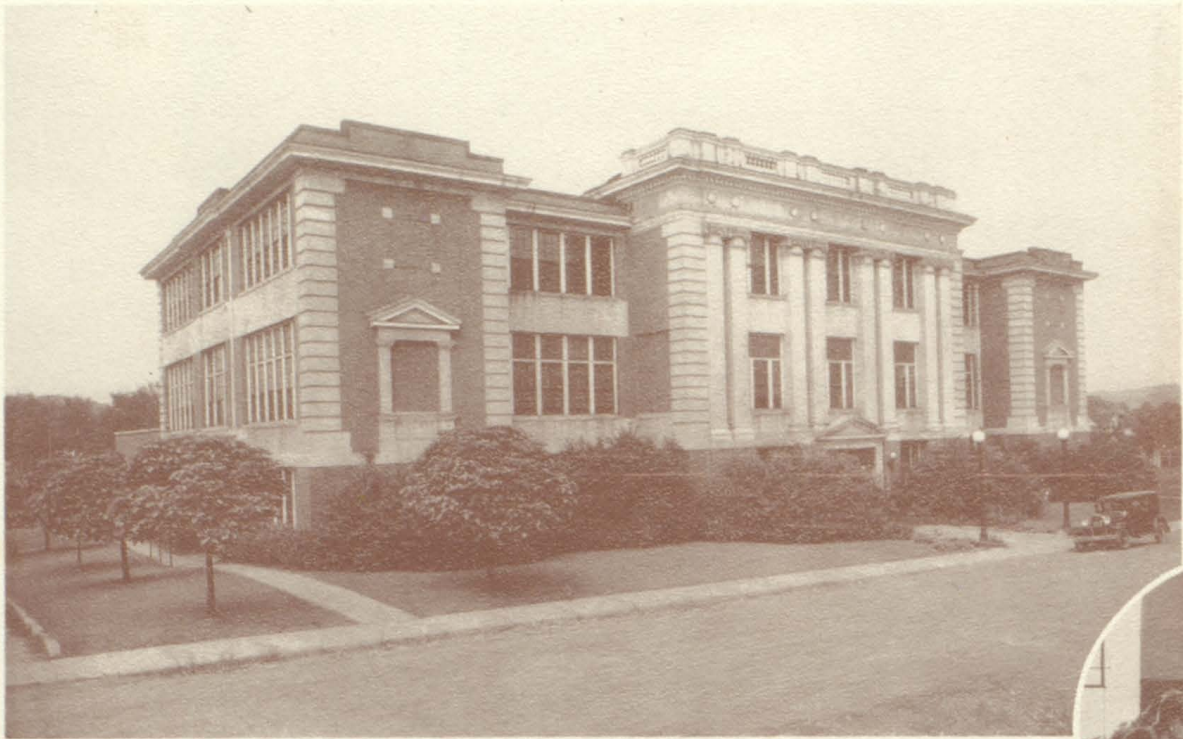


tor 1939

Published at
BRISTOL, TENNESSEE
by the
SENIOR CLASS
of
TENNESSEE HIGH SCHOOL



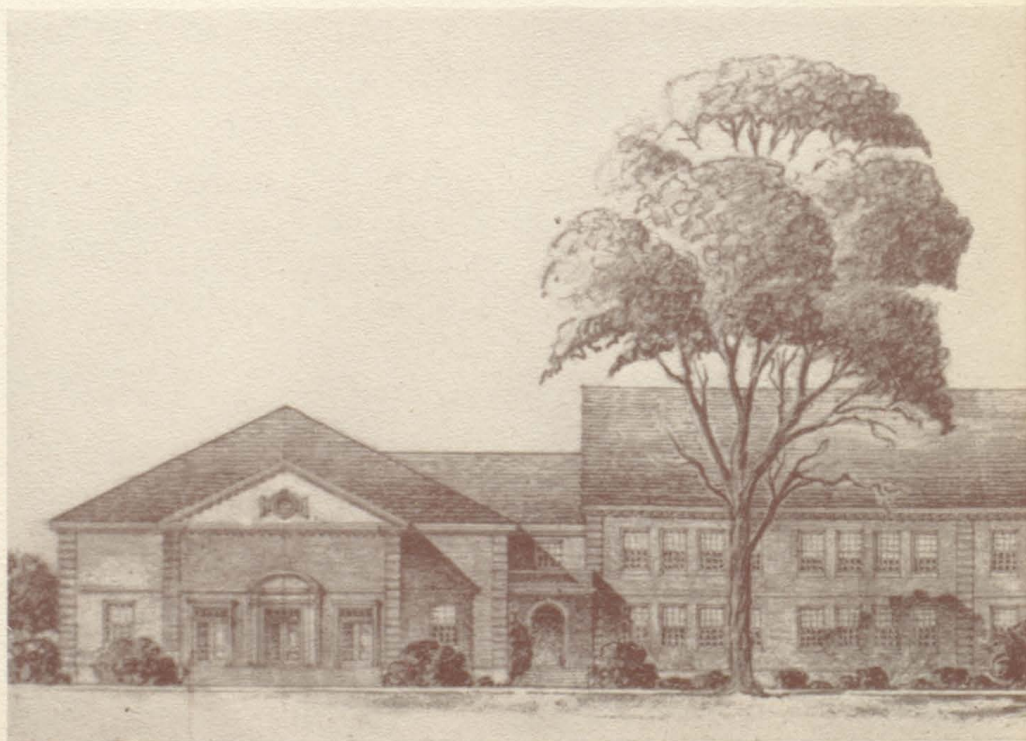
F O R E W O R D



THE old school will bring back pleasant memories to the host of graduates who here have spent five years—years packed with work and play, joy and sorrow, success and failure, disappointment and triumph.

Its image is stamped on the heart of each true Viking; the Viking spirit has been a light to guide those treading the paths of life upon whom its beams have shone.

The old school will never be forgotten, but progress must continue.

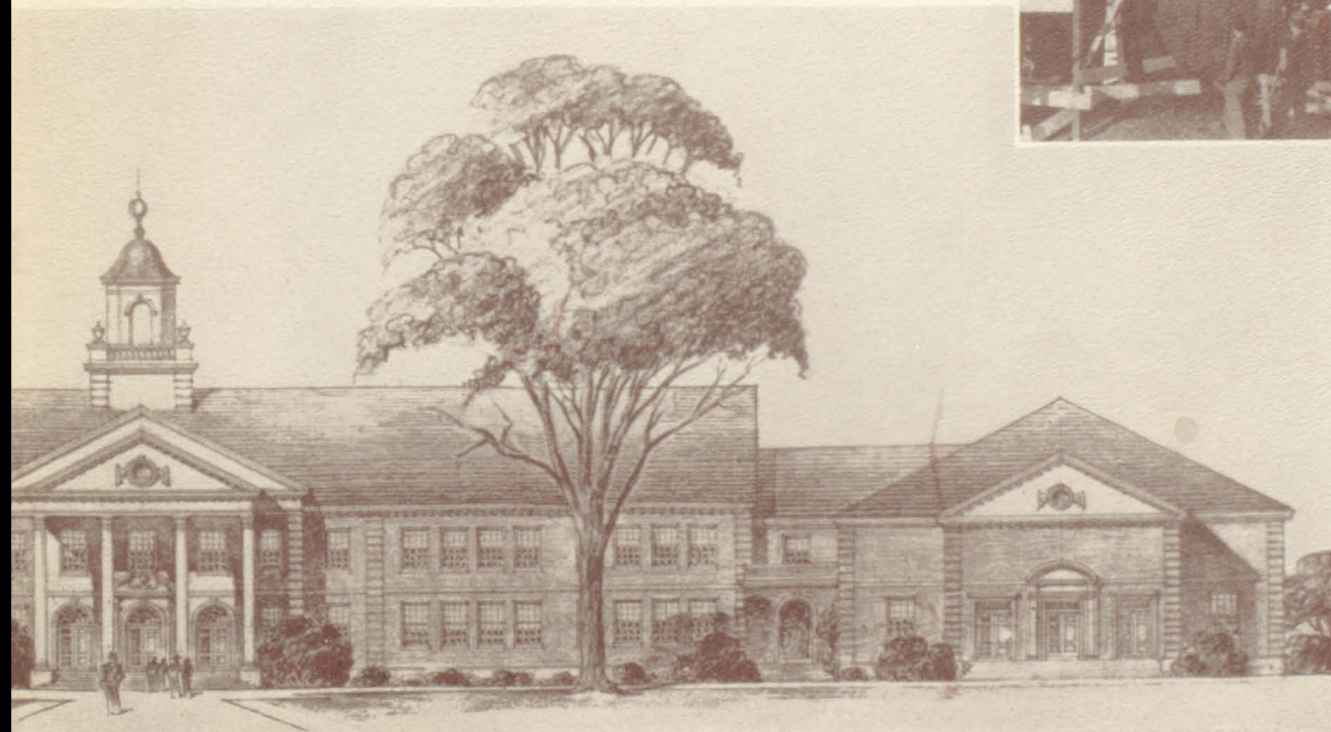


DEDICATION



WE know that in our new school the students will find the inspiration for the attainment of the highest and noblest ideas. As the world moves on, bigger and better things must be accomplished; they can be, with the best efforts of the future bearers of the Viking standard.

The students who are privileged to come within its walls must find a new and greater spirit in the new Tennessee High, for which we have great dreams, great hopes, and great aspirations. When our dreams become realities, there will be a stronger and greater Tennessee High. . . . We leave the Viking ship in the hands of a new crew with best wishes for success in the future voyages.



C
O
N
T
E
N
T
S



C L A S S E S
O R G A N I Z A T I O N S
A T H L E T I C S
F E A T U R E S



CLASSES

ADMINISTRATION

I. D. EGGERS, B. S., M. S.

PRINCIPAL

—«—

Principal of Elementary Schools, Johnson County, Tennessee

Teacher and Assistant Principal of Elkhorn District High School, Switchback, West Virginia

Teacher at Princeton High School, Princeton, West Virginia

Assistant Principal at Tennessee High School, Bristol, Tennessee

Principal of Tennessee High School, Bristol, Tennessee



JOHN H. ARRANTS, A. B., M. S.

SUPERINTENDENT

—«—

High School Teacher and Principal at Bledsoe County High School

High School Teacher at South Pittsburg, Tennessee

County Superintendent, Meigs County, Tennessee

City Superintendent, South Pittsburg, Tennessee

Supervisor of Elementary Schools, State Department of Education

Teacher of Elementary Education, State Teachers College, Murfreesboro, Tennessee

City Superintendent, Bristol, Tennessee



McBERNEY BURLESON, B. S.
ENGLISH

Johnson City State Teachers College

BESS E. EROCE, B. S., A. B.
ENGLISH

Sullins, King College, University of Besoncon,
Johnson City State Teachers College,
George Peabody College

GENEVIEVE R. CALDWELL, B. S., M. A.
MATHEMATICS

University of Tennessee, King College

HALLIE CARSON, A. B., A. B. in L. S.
LIBRARY

Emory and Henry, Emory University,
University of Michigan

FRANCIS A. CLARK, B. S., M. S.
SECRETARY—REGISTRAR

Tennessee Tech, Washington University

JOHN R. COVINGTON, B. S.
RELATED SUBJECTS

University of Michigan, Western State
Teachers, Kalamazoo, Michigan

GEORGE N. DOVE, A. B., M. A.
ENGLISH

Western Reserve

PEARL WALLACE COWAN
DIETICIAN

Sullins, Agnes Scott

ELIZABETH HICKS FERGUSON, B. S.
HISTORY—CIVICS

State Teachers College, George Peabody
College, University of Tennessee

ANNIE NEELD DRYDEN, A. B.
FRENCH—MATHEMATICS

Bryson College, University of Tennessee,
Columbia University

EDWARD ESSER, A. B.
SCIENCE—ASSISTANT COACH

King College

GEORGE G. GILLINGHAM, A. B., M. S.
HISTORY—ECONOMICS

Maryville College, University of Tennessee

SARAH FORTUNE, B. S.
HOME ECONOMICS

Maryville College, University of Tennessee



FACULTY



MAURINE HAWKINS, A. B.

TYPING—LATIN

Carson-Newman, University of Tennessee

CARLETON A. JOHNSON, A. B.

BAND—GLEE CLUB

University of Iowa, Waukon Junior College

ANNA BELLE LYNN, A. B.

MATHEMATICS

Sullins College, King College

MARY RUCKER MARNEY, B. S.

JUNIOR HIGH SCHOOL LATIN—ENGLISH

Johnson City State Teachers College, Farmville, State Teachers College, King College, Emory and Henry

JAMES I. MOONEY, B. S.

INDUSTRIAL ARTS

Johnson City State Teachers College, University of Tennessee

MARGARET O. NININGER, A. B.

ENGLISH

Virginia Intermont, University of Tennessee, Columbia University

EVERETT L. ROWE, B. S.

PHYSICS—SOCIAL SCIENCE

Western Kentucky Teachers College, University of Kentucky

REVELEY OWEN, A. B.

ALGEBRA—GEOMETRY—TRIGONOMETRY

Emory and Henry, R. M. W. C., Sullins College, Columbia University

NANCY STERETT, A. B., M. A.

LATIN

Western Kentucky State Teachers College, Peabody College

DELLE SMITH, B. S., M. A.

BIOLOGY—CHEMISTRY

University of Tennessee, University of Virginia, Columbia University, Mountain Lake, Virginia Biological School, Emory and Henry

E. E. SOLOMON, B. S.

ATHLETIC DIRECTOR—COACH

SOCIAL SCIENCE

Milligan College, Johnson City State Teachers College, Duke University, Vanderbilt

LUCILE WYMAN, B. S.

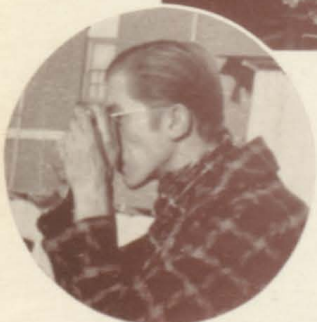
PHYSICAL EDUCATION

Virginia Intermont, University of Michigan

EDITH TAYLOR, B. S.

COMMERCIAL

Murfreesboro State Teachers College, University of Chicago



S N A P S

SENIOR CLASS



MARGARET NAOMI ANDERSON

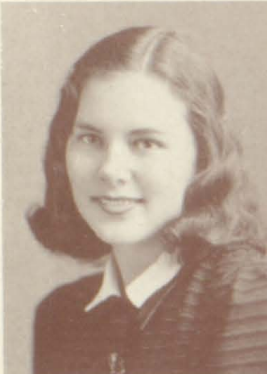
STATE AND COMMERCIAL

Civics Club, '35-'36; Dramatics Club, '36-'39; Alchemist Club, '38-'39, Reporter, '39; Junior Red Cross Representative, '37-'38, Secretary, '37-'38; MAROON AND WHITE, '38-'39.

MARY LYNN BABB

CLASSICAL AND STATE

Commercial Club, '36-'37; Dramatics Club, '36-'38; French Club, '36-'38; Alchemist Club, '38-'39; Glee Club, '36-'38; MAROON AND WHITE, '36.



DOROTHY JUNE BAKER

STATE

Dramatics Club, '36-'39; French Club, '37-'38, Vice-President, '38, President, '39; Civics Club, '35-'36, Treasurer, '36; Secretary Sophomore Class, '36; Alchemist Club, '38-'39; Scout, '39; Vice-President, '38; Basket-ball, '36-'37; Volley-ball, '36-'37; MAROON AND WHITE, '38-'39.

SHIRLEY JANE BAUMGARDNER

CLASSICAL AND POLYTECHNIC

Commercial Club, '36-'37; Secretary, '36; Debate Club, '37-'38; Secretary, '37; Treasurer, '38; Speech Club, '38-'39; Secretary, '38; MAROON AND WHITE, '38-'39; Amusement Editor, '38; Alchemist Club, '38-'39; Reporter, '38.



DORIS CARLTON BEWLEY

CLASSICAL

Glee Club, '38-'39; Dramatics Club, '37-'39; French Club, '37-'38; Alchemist Club, '38-'39; Girls' Hi-Y, '37-'39; CADMEA, '38-'39.

KATHRYN BONDURANT

CLASSICAL

Glee Club, '35-'38; French Club, '37-'39; Alchemist Club, '38-'39; Girls' Hi-Y, '37-'39; Commercial Club, '36-'37; Audubon Club, '36-'37; Tennis Club, '35-'36; Operetta, '36-'37.



CLAIRE EVELYN BOYD

CLASSICAL

Glee Club, '34-'39; Secretary, '37-'38; Librarian, '38-'39; Commercial Club, '36-'37; Public Speaking Club, '36-'37; Dramatics Club, '38-'39; Alchemist Club, '37-'38; Junior Classical League, '38; Girls' Hi-Y, '38-'39.

DOROTHY JEAN BRISCOE

CLASSICAL

Dramatics Club, '35-'39; French Club, '37-'39; Alchemist Club, '38-'39.



WALTER BUCKLES, JR.

POLYTECHNIC, CLASSICAL AND STATE

Alchemist Club, '36-'37; Vice-President, '36; French Club, '36-'39; Vice-President, '36-'37; Dramatics Club, '38-'39; President, '38; Glee Club, '35-'37; Audubon Club, '35; All Students' Council, '38; Boys' Hi-Y, '38-'39; Operetta, '38.

EVA KATHARINE BUSH

GENERAL

Civics Club, '35-'36; Treasurer, '36; Dramatics Club, '36-'38; Commercial Club, '36-'37; Queen of Freshman Class, '35; Alchemist Club, '37-'38; Treasurer, '38; Volley-ball Team, '35; Basket-ball, '35-'37; Girls' Hi-Y, '37-'39; Band Sponsor, '36-'38; Junior Class Shield Bearer, '38.

CRAIG HAWLEY CALDWELL

CLASSICAL AND POLYTECHNIC

Commercial Club, '35-'36; Audubon Club, '36-'37; Junior Play, '37; Debate Club, '37-'39; President, '37; Vice-President, '38, Publicity Secretary, '38-'39; Boys' Hi-Y, '37-'39; Vice-President, '38; President, '38-'39; "T" Club, '38-'39; Treasurer All Students' Club, '38-'39; Alchemist Club, '38-'39; Junior Classical League, '38-'39.

DUANE C. CALHOUN

CLASSICAL, POLYTECHNIC AND STATE

Audubon Club, '36-'37; Civics Club, '35-'36; Sergeant-at-Arms Junior Class, '37-'38; Junior Classical League, '38-'39; Junior Class Play, '37-'38.



SENIOR CLASS

LOIS VEIGH CALHOUN

POLYTECHNIC AND CLASSICAL

Dramatics Club, '36-'37; Alchemist Club, '38-'39; Commercial Club, '36-'37; CADMEA, '38-'39; Junior Red Cross Council, '38-'39; Junior Classical League, '38-'39; Girls' Hi-Y, '38-'39.

FLORENCE EVELYN CONNER

STATE

Civics Club, '35-'36; Glee Club, '36-'37; Dramatics Club, '38-'39; French Club, '37-'39.

MARION CAROLYN COWAN

CLASSICAL

Glee Club, '35-'38; Dramatics Club, '35-'39; Vice-President, '36; Queen Sub-Freshman Class, '35; French Club, '37-'39; Secretary, '38; Alchemist Club, '37-'38; Secretary, '38; Secretary Sub-Freshman Class, '35; MAROON AND WHITE, '37-'38; Photograph Editor, CADMEA, '38-'39; Cheerleader, '38-'39; Girls' Hi-Y, '37-'39; Secretary, '38; Queen of School, '35; Junior Class Play, '37; Operetta, '36-'39; Secretary, All Students Council, '39.

NELL LUCILE CROCKETT

STATE

Civics Club, '34; Glee Club, '34-'36; Dramatics Club, '38; French Club, '38; Audubon Club, '35.

TED DAVIS

POLYTECHNIC AND STATE

Civics Club, '34; French Club, '37-'39; Audubon Club, '37.

JANE LOCHIEL DeVAULT

POLYTECHNIC AND STATE

Civics Club, '35-'36; Glee Club, '37-'39; French Club, '36-'38; Operetta, '37-'38; Dramatics Club, '38-'39.

CARMACK CARRIER

STATE AND MANUAL ARTS

Civics Club, '35; Future Craftsmen, '35-'36; Basket-ball, '35-'36; Manager, Football, '37; Audubon Club, '36-'37.

JACK COWAN

POLYTECHNIC AND STATE

Boys' Hi-Y, '37-'39; Alchemist Club, '38-'39; Reporter, '39; French Club, '36-'39; President, '38; Civics Club, '35; Audubon Club, '36-'37; Junior Play, '37; Treasurer Junior Class, '38; CADMEA, '37-'38; Editor, CADMEA, '38-'39; Staff Artist, '37-'39.

ROBERT L. CRENSHAW

POLYTECHNIC AND STATE

Commercial Club, '35-'36; Audubon Club, '36-'37; Junior Red Cross Council, '38; Speech Club, '38-'39; Alchemist Club, '38-'39; President, '38; Boys' Hi-Y, '38-'39.

MARY ELLEN DAVIS

STATE

Glee Club, '37-'39; Dramatics Club, '37-'39; MAROON AND WHITE, '38-'39; Audubon Club, '36; President, '36; Alchemist Club, '38-'39; Civics Club, '36; Basket-ball, '36; Other Intramural Activities, '36; Girls' Hi-Y, '38-'39.

FRANK DeFRIECE, Jr.

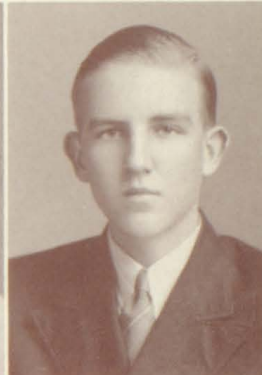
CLASSICAL, POLYTECHNIC AND STATE

Boys' Hi-Y, '38-'39; Alchemist Club, '38-'39; French Club, '37-'39; Civics Club, '35-'36; Audubon Club, '36-'37; Business Manager and Staff Photographer, CADMEA, '38-'39.

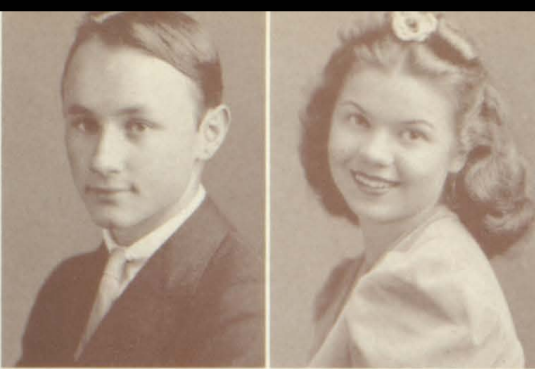
MELVIN EARL DISHNER

STATE AND MANUAL ARTS

Treasurer, Freshman Class, '36; Speech Club, '37; Boys' Hi-Y, '38-'39.



SENIOR CLASS



HENRI DORIOT

CLASSICAL

Dramatics Club, '38-'39; Alchemist Club, '38-'39; President, '38; Boys' Hi-Y, '38-'39; Audubon Club, '37; President, '37; Civics Club, '35-'36; Operetta, '38; Junior Classical League, '38-'39; Sergeant-at-Arms, Junior Class, '37.



FRED EVERETT

POLYTECHNIC AND STATE

Alchemist Club, '38-'39; Dramatics Club, '39; Audubon Club, '37; All Students' Council, '34-'38; "T" Club, '38-'39; Latin Club, '38-'39; Boys' Hi-Y, '38-'39; Football, '36-'38; Junior Class Play, '38; President, Sub-Freshman Class, '35; Secretary, Sophomore Class, '36; Vice-President, Junior Class, '37; Sergeant-at-Arms, Junior Class, '38; President, Senior Class, '38.



SARAH ELIZABETH EPPERSON

CLASSICAL

Glee Club, '35-'38; Dramatics Club, '35-'39; Alchemist Club, '37-'38; Scout, '37-'38; French Club, '37-'39; Secretary, '37-'38; Girls' Hi-Y, '37-'39; Treasurer, '38-'39; CADMEA, '38-'39; MAROON AND WHITE, '37-'38; Speech Club, '38-'39; Junior Class Play, '37; Operetta, '36-'38; Cheerleader, '38.



JEWELL LOUISE FAIDLEY

COMMERCIAL

Civics Club, '34; Audubon Club, '35.



EDYTHE LORRAINE FLEENOR

STATE

Civics Club, '35-'36; Commercial Club, '36-'37; Glee Club, '36-'38; Dramatics Club, '36-'38; Operetta, '37-'38; French Club, '37-'39; Audubon Club, '36-'37.



THEDA GAYNELLE FLEENOR

POLYTECHNIC

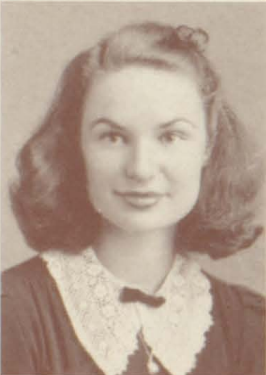
Glee Club, '36-'37; Civics Club, '36-'37; Commercial Club, '36-'37; Girls' Hi-Y, '37-'39; Dramatics Club, '36-'39; Alchemist Club, '37-'38; French Club, '37-'39; MAROON AND WHITE, '37-'39; Operetta, '37-'39.



MARY ELIZABETH FLEMING

CLASSICAL

Secretary, Sub-Freshman Class, '35; Commercial Club, '36-'37; Secretary, '35; Glee Club, '35-'39; President, '37; Secretary, '38; French Club, '37-'38; Girls' Hi-Y, '37-'39; President, '39; Alchemist Club, '37-'38; All Students' Council, '37-'38; MAROON AND WHITE, '37-'39; Operetta, '36-'39.



ALICE CARMINE FOGARTY

STATE

Civics Club, '34-'35; Dramatics Club, '37-'38; Glee Club, '36-'37; MAROON AND WHITE, '37-'38; Alchemist Club, '38-'39; Operetta, '37-'38; Girls' Sports, '34-'37.



WADE FOSTER

MANUAL ARTS AND STATE

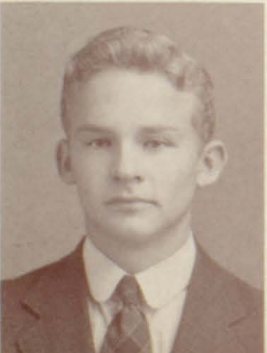
Civics Club, '34-'35; Glee Club, '35-'37; French Club, '36.



MARJORIE FREELS

STATE

Transferred from Knoxville High; Girls' Hi-Y, '38-'39; French Club, '38-'39; Speech Club, '38-'39; Dramatics Club, '38-'39.



BENNY GOODMAN

POLYTECHNIC AND STATE

Civics Club, '35-'36; Commercial Club, '35-'36; Band, '34-'37; Alchemist Club, '37-'38; French Club, '37-'39; Boys' Hi-Y, '38-'39.



CATHARINE GRAY

STATE

Civics Club, '34-'35; French Club, '37-'38; Dramatics Club, '37; Junior Class Play, '38; Volley-ball Team, '34-'35; Basketball Team, '34-'37; Freshman Relay Team, '35; Kick-ball Team, '34-'35; Baseball Team, '34-'35; Tumbling Team, '35-'37.

SENIOR CLASS

MARY DIXIE GREER

COMMERCIAL

Civics Club, '34-'35; Glee Club, '35-'36; Audubon Club, '37; Commercial Club, '37; Dramatics Club, '37-'38; Operetta, '37; Girls' Sports, '34-'35; Girls' Hi-Y, '38-'39.

RUBY MARSH HAMM

STATE

Alchemist Club, '38-'39; Scout, '38; Dramatics Club, '38-'39; Glee Club, '36-'39; Junior Classical League, '38-'39; Johnson City National Junior Honor Society, '35; Orchestra, '35; Latin Club, '35.

ELIZABETH LOUISE HAWK

COMMERCIAL

Civics Club, '35; Audubon Club, '36; Basket-ball, '36-'37.

ROY L. HENNIGER

CLASSICAL AND POLYTECHNIC

Civics Club, '35-'36; Audubon Club, '36-'37.

MARJORIE ELIZABETH HOUSER

CLASSICAL

Dramatics Club, '37-'39; Girls' Hi-Y, '38-'39; Alchemist Club, '38-'39; CADMEA, '38-'39; Secretary, Freshman Class, '36; Queen, Junior Class, '37; Audubon Club, '37; Junior Classical League, '38-'39; Junior Red Cross Council, '38-'39.

MARY HUNTER JOHNSTON

POLYTECHNIC AND STATE

Transferred from Kingsport, Tenn.; Glee Club, '34-'35; Treasurer, '35; Girls' Hi-Y, '37-'39; MAROON AND WHITE, '37-'38; CADMEA, '38-'39; Secretary, '38-'39; Audubon Club, '36-'37.

CAROLYN ELAINE GRUBBS

COMMERCIAL AND STATE

Glee Club, '34-'39; Librarian, '36-'37; Operetta, '34-'38; Commercial Club, '35-'36; Civics Club, '34-'35; Audubon Club, '36-'37.

HARRIET ANN HAMMER

POLYTECHNIC AND STATE

Glee Club, '34; Secretary, Freshman Class, '35; Civics Club, '35-'36; Commercial Club, '36; Dramatics Club, '36-'39; Secretary of Sophomore Class, '37; Queen of Sophomore Class, '37; MAROON AND WHITE, '37-'38; Vice-President, Dramatics Club, '37; French Club, '37-'39; President, '37; Secretary, '38; Secretary, Junior Class, '38; Girls' Hi-Y, '37-'39; President, '38; Vice-President, '39; CADMEA, '38-'39; Treasurer, Senior Class, '38-'39; Alchemist Club, '38-'39; All Students' Council, '38.

ADA LYNN HAWKINS

COMMERCIAL

Civics Club, '35; Intramural Council, '36-'39; Basket-ball, '35-'39; Baseball, '35-'39; Volley-ball, '35-'39; Manager, Intramural Council, '37-'38; Kickball, '35-'38; Audubon Club, '36; CADMEA, '38-'39; Girls' Hi-Y, '38-'39; "T" Club, '36-'39.

NANCY JANE HILT

STATE

Dallas, Texas, Speech Club, '35-'36; Glee Club, '35-'36; Spanish Club, '36-'37; National Honor Society, '36-'37; Bristol, Tennessee, Audubon Club, '38-'39; Alchemist Club, '38-'39; Girls' Hi-Y, '38-'39.

MARY VIRGINIA JANES

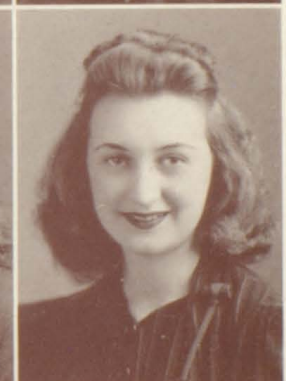
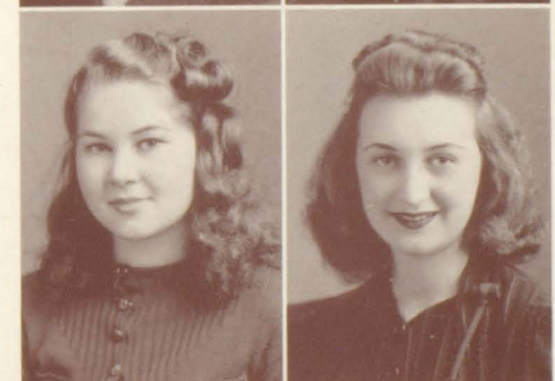
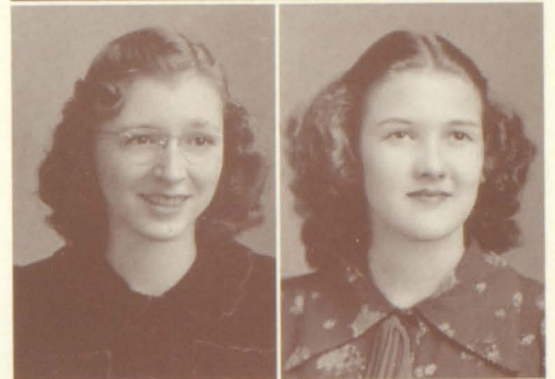
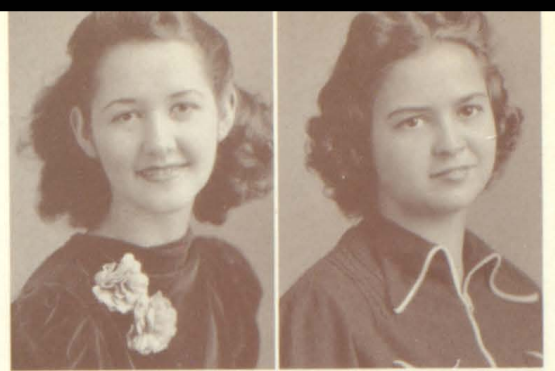
CLASSICAL

Glee Club, '36-'37; Alchemist Club, '37-'38; French Club, '37-'39; Civics Club, '35-'36.

DORIS INEZ KEESLING

STATE

Civics Club, '35-'36; Girls' Hi-Y, '38-'39; French Club, '37-'39; Girls' Sports, '36-'39; Commercial Club, '38-'39; Dramatics Club, '38-'39; Audubon Club, '36-'37.



SENIOR CLASS



ALMA ARNETA LEONARD

COMMERCIAL

Civics Club, '35; Audubon Club, '37; Glee Club, '34-'39; Operetta, '37-'39.

CARMEN LEON LILLEY

COMMERCIAL

Civics Club, '35; President, '35; Audubon Club, '36; Commercial Club, '36-'37; Treasurer, '36; Dramatics Club, '38-'39; Secretary, '38; "T" Club, '36-'39; Cheer Leader, '36-'39; Girls' Hi-Y, '37-'39; Intramural Activities, '35-'39.



DELILAH ELIZABETH LOWE

CLASSICAL AND STATE

Glee Club, '34-'39; Dramatics Club, '35-'36; Operetta, '34-'39; Kickball, '35; French Club, '37-'39.

ADELAIDE MAHONEY

CLASSICAL AND POLYTECHNIC

Glee Club, '34-'37; President, '37; Dramatics Club, '36-'38; President, '38; MAROON AND WHITE, '37-'39; Assistant Editor, '37-'38; Editor-in-Chief, '38-'39; Girls' Hi-Y, '37-'39; Secretary, '39; Vice-President, '38; Cheer Leader, '37-'39; Alchemist Club, '38-'39; Secretary, '39; "T" Club, '37-'39; Secretary, Junior Class, '37; Secretary, Senior Class, '38-'39; Secretary, Student Body, '38; Treasurer, Student Body, '39; Vice-President, Junior Classical League, '38.



HARRIETTE LOUISE MANN

CLASSICAL

French Club, '36-'38; Audubon Club, '37-'38.

WILLIEBELL MARCY

POLYTECHNIC AND STATE

Civics Club, '35-'36; Commercial Club, '35-'36; Glee Club, '36-'39; MAROON AND WHITE, '38-'39; French Club, '37-'39; Dramatics Club, '36-'39; Speech Club, '38-'39; Audubon Club, '37-'38.



MARGARET JOYCE MARION

POLYTECHNIC

Glee Club, '36-'37; Civics Club, '35; French Club, '37-'39; Audubon Club, '35.

ELLEN JANE MARTIN

STATE AND POLYTECHNIC

Johnson City, Tennessee, Latin Club, '35-'36; Dramatics Club, '35-'36; Glee Club, '35-'36; National Junior Honor Society, '36; Travel Club, Reporter, '37; Tennessee High Audubon Society, '36-'37; Glee Club, '36-'37; Debate Club, '37; Alchemist Club, '38-'39.



ELIZABETH KATHERINE MOORE

CLASSICAL, POLYTECHNIC AND STATE

Alchemist Club, '38-'39; Secretary, '38; Audubon Club, '36-'37; Girls' Hi-Y, '38-'39; Junior Classical League, '38-'39.

HARTSELL A. MORRELL

CLASSICAL

Civics Club, '35-'36; Commercial Club, '36-'37; French Club, '36-'39; Football, '35-'37; Basket-ball, '35-'39; Audubon Club, '36-'37; "T" Club, '36-'39.



MARY ALICE MOTTERN

POLYTECHNIC

Civics Club, '35; Commercial Club, '36; French Club, '37-'39; Glee Club, '39.

RIDDICK McANGE

STATE AND POLYTECHNIC

Civics Club, '35-'36; Commercial Club, '36-'37; Future Craftsman's Club, '36-'37; CADMEA, '37-'38; French Club, '37-'39; Boys' Hi-Y, '38.

SENIOR CLASS

MARGARET VANCE McCARY

STATE

Band, '35-'39; Intramural Sports, '34-'39; Soccer Manager, '37-'38; Basket-ball Manager, '38-'39.

DOROTHY ANNE McCLELLAN

CLASSICAL

Glee Club, '36-'37; Girls' Hi-Y, '38-'39; Audubon Club, '35; Junior Classical League, '38.

DOROTHY ANNE McGHEE

CLASSICAL AND STATE

Glee Club, '34-'39; Band, '35-'39; Dramatics Club, '34-'36; Basket-ball, '34-'39; French Club, '37-'39; Alchemist Club, '38-'39; MAROON AND WHITE, '36-'39; Managing Editor, '37-'38; Assistant Editor, '38-'39; Commercial Club, '36-'37; Operetta, '36-'39.

DAVID McKEE

CLASSICAL AND STATE

"T" Club, '38-'39; Civics Club, '35-'36; Operetta, '38; Alchemist Club, '38-'39; Boys' Hi-Y, '38-'39; Treasurer, '38; Audubon Club, '36-'37; Manager Football, '38; Sergeant-at-Arms, Senior Class, '38; Sergeant-at-Arms, Alchemist Club, '38; Latin Club, '38-'39.

REX C. NEWMAN

COMMERCIAL

Civics Club, '35; Commercial Club, '35-'36; Boys' Hi-Y, '38-'39.

VIRGINIA LEE O'DELL

CLASSICAL AND STATE

Glee Club, '37-'39; Dramatics Club, '36-'39; Debating Club, '36; Audubon Society, '36; French Club, '37-'39; Commercial Club, '36; French Classical League, '38-'39.

FRANCES ELIZABETH PAIR

COMMERCIAL

Civics Club, '36; Dramatics Club, '35-'37; Glee Club, '35-'38; French Club, '38; Commercial Club, '36.

ERSKINE PARKS

CLASSICAL AND STATE

Civics Club, '35-'36; President, '36; Audubon Society, '36-'37; Operetta, '38; Alchemist Club, '38-'39; Boys' Hi-Y, '38-'39; Latin Club, '38-'39; Dramatics Club, '38-'39.

WILLIAM BERNARD PETERS

POLYTECHNIC AND STATE

French Club, '36-'39; Boys' Hi-Y, '38-'39; Dramatics Club, '38-'39; President, '39.

MARGARET INEZ PHILLIPPI

COMMERCIAL

Civics Club, '34; Audubon Club, '35; Intramural Council, '36; Girls' Hi-Y, '37-'38; Basket-ball, '35-'37.

SARAH FRANCES POORE

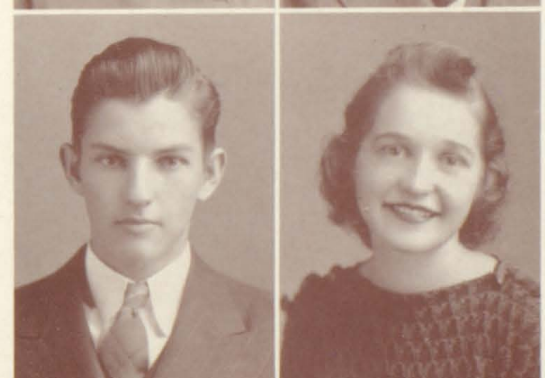
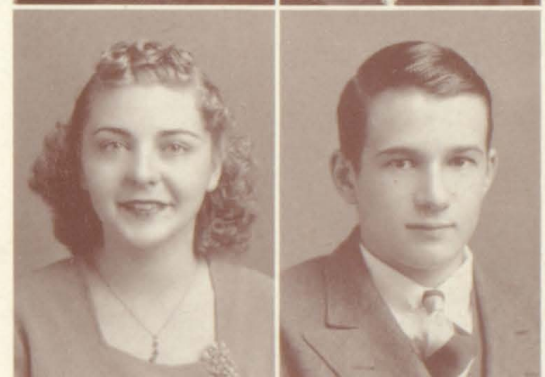
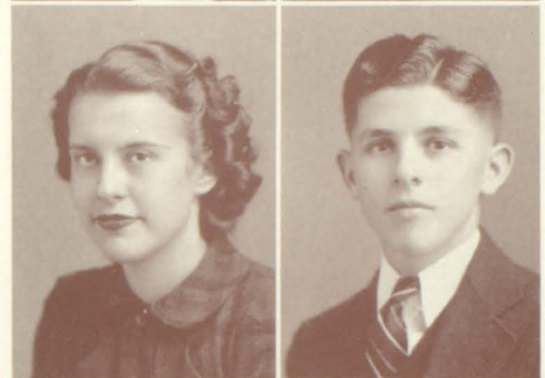
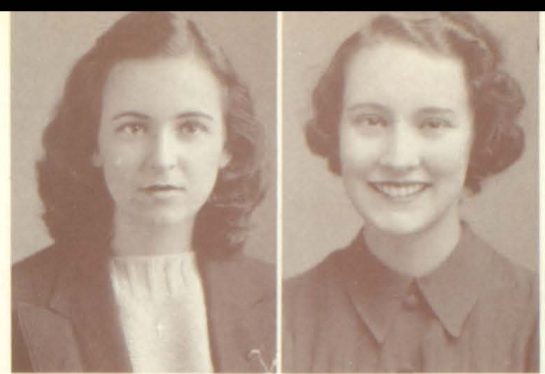
COMMERCIAL AND STATE

Audubon Club, '36; Commercial Club, '36-'37; Civics Club, '35-'36; Glee Club, '34.

MARTHA FRANCES POST

CLASSICAL

Band, '35-'38; Glee Club, '35-'39; Secretary, '36-'37; Vice-President, '37-'38; Speech Club, '36-'39; President, '37; Vice-President, '38; Alchemist Club, '37-'38; French Club, '37-'39; Girls' Hi-Y, '38-'39; Treasurer, '39; CADMEA, '38-'39; All-Students' Council, '37-'38; Operetta, '36-'39.



SENIOR CLASS



CAROLEAN PYLE

STATE

Civics Club, '35; Glee Club, '35-'36; French Club, '36-'38; Alchemist Club, '37; Audubon Society, '36-'37.

MARY FRANCES QUILLEN

CLASSICAL AND POLYTECHNIC

Glee Club, '35-'39; Dramatics Club, '35-'39; Alchemist Club, '37-'38; French Club, '37-'39; CADMEA '38-'39; Girls' Hi-Y, '38-'39; Basketball and Other Intramural Activities, '35-'39; Junior Play, '38; Operetta, '37-'38.



LOIS FRANCES REMSEN

STATE AND COMMERCIAL

Civics Club, '34-'35; Commercial Club, '34-'35; Glee Club, '38; Dramatics Club, '38; Audubon Society, '35-'36.

VIRGINIA PEARL RICHARDS

STATE AND COMMERCIAL

Civics Club, '35-'36; Commercial Club, '36-'37; Audubon Society, '36.



MARGARET ELEANOR ROBERTS

COMMERCIAL AND STATE

Dramatics Club, '35-'39; President, '37; Vice-President, '38; Glee Club, '35-'37; French Club, '38-'39; Secretary, '38; Civics Club, '36; All-Students' Council, '38; Audubon Society, '36; Junior Class Play, '38; Girls' Hi-Y, '38-'39; Secretary, Sophomore Class, '36.

ELLEN VIRGINIA ROLLINS

CLASSICAL AND STATE

MAROON AND WHITE, '36-'38; Dramatics Club, '35-'39; Glee Club, '35-'37; Alchemist Club, '37-'38; French Club, '37-'39; Girls' Hi-Y, '37-'39; CADMEA, '38-'39; All Students' Council, '38-'39; Operetta, '35-'38; Junior Play, '36; Vice-President, Dramatics Club, '38; President, French Club, '38; Vice-President, Sophomore Class, '37.



SUE ELLEN ROGERS

COMMERCIAL AND STATE

Glee Club, '34-'35-'39; Civics Club, '34.

DOROTHY LYNNE RUTHERFORD

CLASSICAL AND STATE

French Club, '37-'39; Alchemist Club, '37-'39; Glee Club, '35-'36; Dramatics Club, '35-'36; Audubon Society, '35-36.



JOHN PAUL SENTER

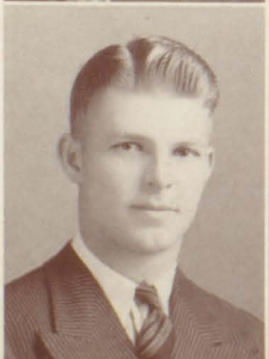
CLASSICAL AND STATE

French Club, '36-'39; Alchemist Club, '38-'39.

ALMA SIMMONS

CLASSICAL AND STATE

Dramatics Club, '38-'39; French Club, '38-'39; Alchemist Club, '39; Commercial Club, '36; Girls' Hi-Y, '38-'39; Secretary, Alchemist Club, '39; Vice-President, French Club, '39.



JULIAN ELMER SISLER

STATE

Civics Club, '35; Manual Arts Club, '35-'36; Commercial Club, '36; Alchemist Club, '38-'39; Band, '34-'39; Football, '38; Latin Club, '34; Operetta, '36-'37; Orchestra, '37.

GAYNELLE SMITH

STATE

Glee Club, '35-'36; Civics Club, '35; Dramatics Club, '36; French Club, '36-'38; Alchemist Club, '37-'38; Secretary, Civics Club, '36; Secretary, French Club, '38.

SENIOR CLASS

HERBERT EUGENE SMITH, Jr.

POLYTECHNIC AND STATE

Civics Club, '34; Glee Club, '36-'39; Dramatics Club, '38-'39; French Club, '36-'38; Operetta, '38.

NEAL SMITH

POLYTECHNIC AND STATE

Civics Club, '35; Band, '34-'39; Alchemist Club, '37-'39; Operetta, '37; Orchestra, '37; French Club, '37-'39; Audubon Club, '37.

RUBY TANIA SMITH

STATE

Civics Club, '36-'37; Speech Club, '36-'37; Glee Club, '35-'37; Alchemist Club, '38-'39; French Club, '38-'39; Audubon Club, '36-'37.

WILLIAM M. SNODGRASS

STATE

Civics Club, '35-'36; Golf, '38-'39; French Club, '37-'39; Alchemist Club, '37-'38; "T" Club, '38-'39.

MARY VIRGINIA STEWART

POLYTECHNIC AND STATE

Elizabethton, Tennessee, Aristotle Club, '34-'36; Home Economics Club, '35-'37; Girls' Hi-Y, '36-'37; Second Vice-President, '36-'37; Tennessee High School Alchemist Club, '38-'39; Glee Club, '38-'39.

WINFIELD SCOTT STICKLEY

POLYTECHNIC AND STATE

Civics Club, '34-'35; Treasurer, Sophomore Class, '36; Audubon Club, '35-'36; Junior Varsity Basketball, '34-'37; Junior Class Play, '36-'37; Alchemist Club, '36-'37; "T" Club, '37-'39; French Club, '37-'38; President, '37; Treasurer, '38; Dramatics Club, '36-'39; Football, '35-'38; Boys' Hi-Y, '38-'39; Secretary, '38; All Students' Council, '37.

HELEN FRANCES STOVER

CLASSICAL AND STATE

Alchemist Club, '37-'39; Sergeant-at-Arms, '38; Glee Club, '34-'39; French Club, '36-'37; Dramatics Club, '35-'39; Girls' Hi-Y, '38-'39; Tennis Club, '34-'35.

DORIS SULLIVAN

Transferred from Cumberland College, Williamsburg, Kentucky.

BETSY SUTHERLAND

STATE AND COMMERCIAL

Commercial Club, '35-'36; Dramatics Club, '36-'39; Glee Club, '39; Civics Club, '35-'36; Audubon Club, '36-'37.

BILLY THOMAS

STATE AND MANUAL ARTS

Varsity Football, '35-'38; Junior Varsity Football, '34; Junior Varsity Basketball, '35-'36; Boys' Hi-Y, '37-'38; Varsity Track, '34-'39; "T" Club, '34-'38.

FRED VANCE

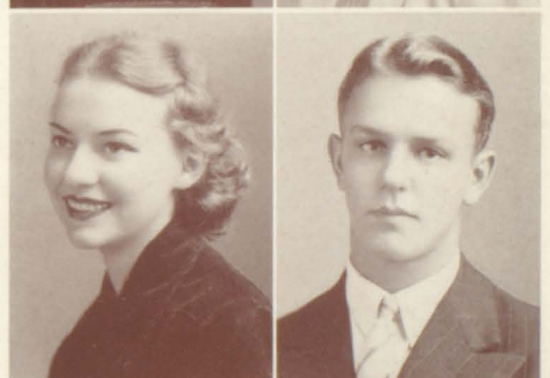
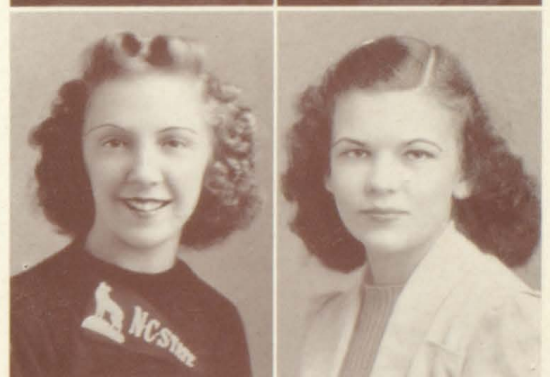
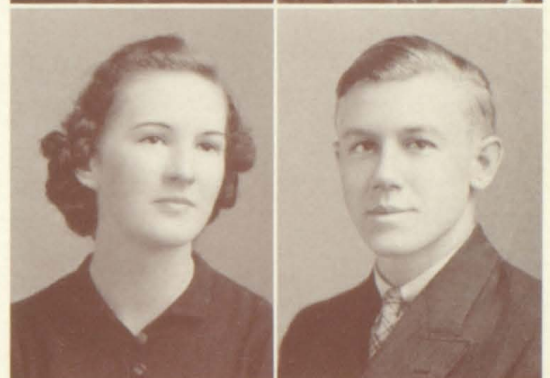
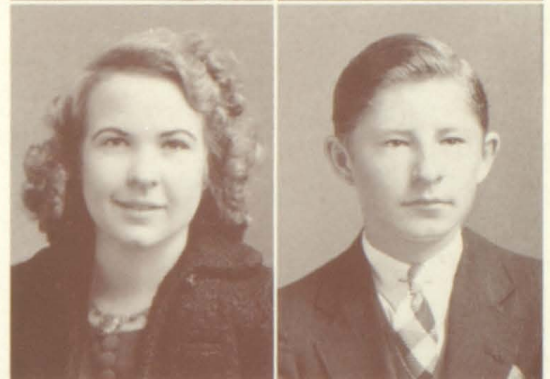
CLASSICAL AND STATE

Civics Club, '35-'36; Operetta, '33; Alchemist Club, '38-'39; Boys' Hi-Y, '37-'39; Audubon Club, '36-'37; "T" Club, '37-'39; Latin Club, '38-'39; Football, '36-'38; Junior Varsity Basketball, '35-'37; Track, '38-'39; Varsity Basketball, '37-'39; President, Sub-Freshman Class, '35; President, Freshman Class, '36; President, Sophomore Class, '36; President, Junior Class, '37; President, Student Body, '38; Treasurer, Alchemists Club, '38; Vice-President, Senior Class, '38; President, Senior Class, '39.

MARGARET ELIZABETH THOMAS

STATE

Glee Club, '36-'37.





SENIOR CLASS

IVA LOUISE VAUGHT

COMMERCIAL AND STATE

—**—**
Civics Club, '35-'36; Glee Club, '36-'38; Dramatics Club, '38.

ANNE WAYLAND

STATE

—**—**
French Club, '37-'39; Civics Club, '35-'36; Audubon Club, '36-'37; Girls' Hi-Y, 38-'39.



EDWARD STEPHEN WHITAKER

CLASSICAL AND STATE

—**—**
Debate Club, '36-'39; Vice-President, '37-'38; "T" Club, '36-'39; Alchemist Club, '38-'39; French Club, '37-'39; Civics Club, '35; Audubon Club, '37-'38.

BARBARA SUE YANCY

CLASSICAL AND STATE

—**—**
French Club, '37-'39; Commercial Club, '36-'37; Glee Club, '36-'37; Alchemist Club, '38-'39.

SENIOR CLASS SONG

Our Senior year draws to its close,
And parting time has come.
With saddened hearts we bid farewell
To our dear high school home.

For four long years these classic rooms
and halls
Have echoed to our tread.
In mingled sunshine and in shower
A happy life we've led.

At times we've dreamed our eager dreams,
With bouyant hearts and light,
But then we've bowed our heads in shame
Defeated in the fight.

But as we pass the threshold o'er
As sons and daughters true,
We pledge our lifelong loyalty,
Oh, Tennessee, to you.

—MARTHA POST and ELIZABETH FLEMING.

COLORS: Blue and White

FLOWER: Rose

HISTORY

In the fall of 1934 a group of happy boys and girls marched proudly on their way to B. T. H. S. They had achieved their greatest ambition; they were going to high school! . . . We, the Seniors of 1939, composed that extremely self-confident group. The next day, however, some of our confidence was destroyed, when we found ourselves in the wrong classrooms and at the end of the lunch line.

In the spring our confidence was partially restored when our sub-freshmen queen, Carolyn Cowan, was crowned queen of the school.

The next year our confidence was really established when we attained the status of a freshman. Among our many experiences that year, was taking one of Miss Broce's weekly tests (twenty-five minus for one mistake).

In our Sophomore year our attention was centered upon mastering our subjects, including biology, geometry, and Caesar, which were much harder. Anyway, typing to the music of a victrola was a lot of fun.

The fall of 1937—Juniors—at last we were up in the world! Fully aware of our importance, we held our heads high, demanding the respect due us as upperclassmen.

One of the most outstanding events of the year for us, was our Junior Play, "The Professor's Mummy", which was presented under the direction of Miss Nininger. After the play, the Juniors had a party at Hotel Bristol.

At the end of the year, Fred Vance was elected President of the Student Body for the following semester.

In the Senior election at the beginning of the year, Fred Everett was chosen President; Fred Vance, Vice-President; Adelaide Mahoney, Secretary; Harriet Hammer, Treasurer; and David McKee, Sergeant-at-Arms. Spring officers are President Fred Vance, Vice-President Craig Caldwell, Secretary Adelaide Mahoney, Treasurer Harriet Hammer, and Sergeant-at-Arms David McKee.

We sponsored a movie at the Paramount during the early part of the first semester. In fact, after selling magazine subscriptions and tickets for the Senior Play, we go into the world, heedless of the unemployment situation; we feel well qualified to become salesmen for the Fuller Brush Company.

One of the Senior projects for the year was the sending of favors for Thanksgiving to sixty of the soldiers at the Veterans' Hospital in Johnson City.

The President of the Student Body for the second semester was Frank Nidiffer.

In the spring our Senior Play received much favorable comment due to the very able direction of Mr. Gillingham, and the splendid performances of Carolyn Cowan, Ellen Rollins, Doris Bewley, Craig Caldwell, and Robert Crenshaw.

One of the crowning achievements of our high school days is the fact our football team has won the city championship each year.

It is with reluctance that we, the last and the largest graduating class of the old Tennessee High, say goodbye to scenes which have become dear to us through long association.

CLASS WILL

We, the Class of Nineteen Hundred Thirty-nine of Tennessee High School, City of Bristol, County of Sullivan, realizing the nearness of our departure and our importance as Seniors of this denomination, do hereby declare this our last will and testament.

FIRST, to the faculty we leave our deepest gratitude and kindest feelings for their faithful guidance along the road of education.

SECOND, to our beloved sponsors, Mrs. Ferguson, Miss Owen, and Mr. Burleson we leave our sincerest appreciation for the aid they have rendered us during our trials and tribulations.

THIRD, to the Sophomores, Freshmen, and Sub-Freshmen, we leave the general characteristics of the Seniors and the hope they, too, will be inspired by their last year in this worthy institution.

FOURTH, to the Juniors, our personal bequests are as follows:

I, Frances Quillen, with a great deal of reluctance, bequeath my spontaneous giggles and ability to squeal to Mary Anne Cassidy.

We, Chester Butterworth, Ted Davis, Henri Doriot, and Duane Calhoun willingly leave our shyness and ability to blush to Jock Logan, Edmund Cass and Bill Sparger with hopes that they will win sympathy from the ladies.

We, Marjorie Freels and Katherine Bush, leave our charming personalities to Florence Lane and Mildred Bibee.

I, Helen Frances Stover, will my famous question, "What'll I do?" to Rosina Rainero, hoping some kind friend will present the correct answer.

We, Alice Fogarty, Mary Dixie Greer, Sue Yancy and Ruby Smith, bequeath our various hair styles to June Gray, Edna Ruth Hickham, Mary Ann Torbett, Evelyn Winger and Janice Vanhook.

We, Catharine Gray, Ada Lynn Hawkins, Edythe Fleenor, Margaret McCary and Elizabeth Thomas, leave our athletic talents to June Godsey, Ruth Crawford, Frances Arnold and Marjorie Mercer with three cheers for future gym classes.

We, Jewell Faidley, Frances Poore, Louise Vaught, Louise Mann and Margaret Marion, leave our modest simplicity to Ella Lee, Margaret Furge and Kathleen Feagins.

I, Melvin Dishner, leave to Eugene Phipps, William Overby, Ernest Fisher and Richard Tankersley, one good T-model Ford to furnish transportation to and from school, next year.

We, Carmack Carrier, Brandon Hagey, and John Paul Senter, leave to Conley Cowan, Clyde Rader, James McNew and Don Shumaker our desire to seek knowledge, hoping they will prove more successful than we.

I, Betsy Sutherland, bequeath my daily ride to school to any Junior girl who might be interested.

We, Gaynelle Smith, Dorothy Rutherford, Frances Pair and Mary Alice Mottern, will our art of applying make-up to Claudine Herron, Helen Moore, Jeanette McCroskey, Ada Grimes and Mary Smith.

We, Katherine Bondurant, Evelyn Conner, Elizabeth Houser, Doris Sullivan, Alma Simmons and Arnetta Leonard, leave our sweet dispositions to Helen Emmert, Mildred Cole, Elizabeth Dix, Wahnita Droke and Evelyn Spicer.

I, Ellen Jane Martin, being the tiniest of the Seniors, will my position to Katherine Pyle, hoping she won't be mangled in the halls during the changing of classes.

We, Virginia O'Dell, Margaret Phillippi, Carolean Pyle and Ruby Hamm, possessing a cheerfulness that has won us many friends, leave it to Elizabeth Hughes, Alice Heninger, Mary Nelle Rhea and Elizabeth Rutherford.

We, William Snodgrass and Neal Smith, known for our misfortune in French class, bequeath it to Thomas Morgan and Haskell Webb.

I, Rex Newman, will some of my surplus energy to all weary Juniors, especially during Senior exams.

We, Bill Thomas, Jim Newton and John Peoples, leave to Jimmy Fulwider, Roy Faidley, Robert Koontz, Frank Taylor and Douglas Owen our ability to play football.

I, Elizabeth Fleming, leave to Katherine Carson my ability to tickle the ivory tusks.

We, Walter Buckles and Robert Crenshaw, leave to George Legg and Margaret Harkins our unusually good scientific attitude so that they might serve as compensators to Miss Smith after our departure.

We, Fred Frazier, Wade Foster and Winfield Stickley, leave our dignity and seriousness to Eugene Reynolds, Veta Stout and Bruce Dougherty.

I, Sue Rogers, will my love for quoting memory work in Mr. Burleson's English class, to Evelyn Carrier, Ada Smith and Mary Heninger.

We, Shirley Baumgardner, Lois Calhoun, Mary Lynn Babb, Virginia Richards, Dorothy McClellan and Virginia Stuart, being the feminine sharks in all subjects, bequeath our brilliance to Betty Jo Brown, Louise Bush and Charlotte Crenshaw, urging them to continue carrying the honors.

We, Clarence Jones and Haskell Morris, will and bequeath our interest in sports to Robert Shoaf, Robert Tester and William Thompson, with hopes that they will be as effulgent fans as we have been.

I, David Powers, leave my interest in and knowledge of leading novels to Richard Shinn.

We, Ed Whitaker and Herbert Smith, leave our positions as school sheiks to Daniel Miller, Albert Peoples, Carl Loggans and James Baird, provided they will prove more successful in making feminine hearts flutter.

I, Riddick McAnge, will my many dates at the institutions of elevated learning to Hugh Powers.

I, Claire Evelyn Boyd, leave to Morris Ross all memories of a fine romance.

We, Fred Everett, Jack Cowan, Craig Caldwell and Adelaide Mahoney, will and bequeath our popularity and various offices to Frank Nidiffer, S. L. Wilkerson, Jess Worley and Mary Betty Huff.

I, Sarah Elizabeth Epperson, leave my love for making eyes at the men to Ardella Young.

We, George Brown and Benny Goodman, bequeath a small amount of our musical technique to Lynnwood Rhea and Billy Birdwell, provided they will be jitterbugs at future pep meetings.

We, Carolyn Cowan and Fred Vance, Dorothy Baker, and Benard Peters, will some fidelity to Jimmy Wilson and Donald DeVault, hoping it will prove useful after the departure of two well-known lady Seniors.

We, Julian Sisler and Hartsell Morrell, bequeath to Donald White and Lee Harkle road our seats in assembly so they, too, can sleep without being disturbed.

We, Margaret Anderson, Jean Briscoe, Mary Ellen Davis, Jack Kestner, and Roy Heninger, will our ability of winning friends to Margaret Blevins, Evelyn Arnold and Margie O'Dell.

I, Eleanor Roberts, possessed with poetical talent, leave it to Alvin Combs, so his future writings will be more than blank verse.

We, Nell Crockett, Nancy Hilt, Mary Janes, Elizabeth Moore, and Erskine Parks, bequeath our quietness to Joe Hicks, Marvin Hawk, James Hawk, Frank Thomas and Dungan Kaylor, so the study halls will be much quieter.

I, David McKee, will my nickname, "Whiskey", to any Junior who can prove his fitness for the name.

We, Doris Bewley, Delilah Lowe and Carolyn Grubbs, leave to Virginia Ash and Eleanor Keeble our melodious voices with hope of continued success in future school productions.

I, Hunter Johnston, bequeath my stylishness to Kathryn Hill.

We, Gaynelle Fleenor, Williebell Marcy, Martha Post, Lois Remsen and Jane DeVault, leave our varied collection of Abingdon, King College and Johnson City boys to Dorothy Pair, Jane Broglin, Nell Blackley, reminding them that foreign talent can prove to be interesting, but there is no place like home.

I, Carmen Lilley, leave my pep and school spirit to Judy Smith.

We, Ellen Rollins, Doris Keesling and Frank DeFriece, leave to Joe Bachman parts of our witty personalities, in hope that he, too, will become a wit.

I, Dorothy McGhee, will my ability to skip classes to Thad Slack.

Witnesses:

FRED EVERETT, Fall President
FRED VANCE, Spring President
MR. BERNEY BURLESON, Sponsor
MRS ELIZABETH FERGUSON, Sponsor
MISS REVELY OWEN, Sponsor

Signed:

HARRIET HAMMER,
Legator of Senior Class.

PROPHECY

It's a cold and sunny day—just right for a football game. From my seat in the press box, I can see the bands marching on the field and I can hear the crowds yelling excitedly. Tennessee High's homecoming game is a big success. It is especially successful because it is the scene of the reunion of the Class of '39.

Well do I remember that class—my class. Even now I can see before me each and every member of it. One by one their faces flash before my eyes, and I see—

Margaret Anderson still looking for a certain "Popeye" down at Myrtle Beach. . . . George Brown leading Army's band at the Army-Navy game. Watch him strut! . . . Benny Goodman stand-in for the "King of Swing." . . . Ted Davis trying to get his ancient T-model to start. The last time it WENT was in 1938. . . . Hartsell Morrell following in his brothers' footsteps. Now he's the state's finest basket-ball star. . . . Lois Calhoun making straight A's in college. . . . Bill Thomas seeing the world in eighty days. He's running his way around. . . . Ed Whitaker modeling in a fashion show for men. . . . Riddick McAnge moving to Greeneville "where there are some good looking girls". Unquote. . . . Alice Fogarty one of the most efficient nurses at Johns-Hopkins. . . . Jack Cowan running the country's best commercial artists out of business. . . . Jim Newton captain of the leading Rose Bowl contender this year. . . . Dorothy Baker, Jean Briscoe, Ruby Smith, and Alma Simmons taking their annual trip to the beach at South Carolina. . . . Helen Frances Stover sighing despondently, "I'm in such a mess. I gave Julian a date for tonight and I've already got one." . . . Clarence Jones managing King's Tornado. . . . Lois Remson and Jane DeVault as inseparable friends as they were in high school. . . . Duane Calhoun wondering what his weight really is. He's broken every pair of scales in town trying to find out. . . . Ada Lynn Hawkins Tennessee High's newest gym teacher. . . . Frances Quillen owner of a nationally known giggle. NBC finally has taken it over. . . . Delilah Lowe with a broken ankle. Who will Carrier? . . . Elizabeth Moore sailing for England on a large ocean liner. . . . Virginia O'dell carrying on after the retirement of Gracie Allen. . . . Frances Pair the big attraction in a Broadway floor show. What do gentlemen prefer, anyway? . . . Ellen Jane Martin designing size 10 clothes for women. Who wants to have to buy in the children's department? . . . Fred Vance breaking the record of Rip Van Winkle. Didn't we always say he liked to sleep? . . . Mary Janes still trying to convince people that the name is Janes, not James. . . . Craig Caldwell debating at Columbia University. . . . Adelaide Mahoney the first woman editor of the "New York Times". . . . Dorothy McGhee playing in the tennis finals at Forest Hills. . . . Jack Kestner writing a dictionary of his own. What does Mr. Webster know about it that he doesn't? . . . Haskell Morris talking like Popeye. . . . Bernard Peters the cinema's No. 1 glamour boy. . . . Doris Keesling showing a group of girls how to break up classes. Results guaranteed. . . . Elizabeth Houser, Dorothy McClellan, Margaret Marion, and Virginia Richards shouting at a football game. And I DO mean shouting! . . . Margaret McCary winning a "beautiful mouth" contest. Elizabeth Fleming one of King College's co-eds. . . . William Snodgrass accepting a silver cup for the world's golf championship. . . . Gaynelle Smith, Doris Sullivan, and Sue Yancy seeing who can chew chewing gum the hardest. . . . Erskine Parks managing Parks-Belk Company. . . . John Paul Senter joining the navy. . . . Nancy Hilt's dimpled smile adorning a magazine cover. . . . Dorothy Rutherford modeling clothes in New York. . . . Neal Smith a drummer in the United States Marine Band. . . . Mary Ellen Davis hostess on a transcontinental plane. . . . Katherine Bush still "Swede's" One and Only. . . . Fred Frazier managing his own grocery store. . . . David Powers author of the year's best seller. . . . Eleanor Roberts studio pianist in a New York broadcasting station. . . . Harriet Hammer "Clarking" in a store. . . . Carmen Lilley refereeing a basket-ball game. . . . Frank DeFriece still pointing a camera in many and sundry directions. . . . Williebell Marcy attending a dance. Ah me, this social whirl! . . . Louise Vaught, Frances Poore, and Jewell Faidley three of the town's most capable secretaries. . . . Melvin Dishner crossing the country in his 1920 model Ford. By now he's almost to Podunk. . . . Mary Dixie Greer happily married to a former Emory student. . . . Dr. David McKee hanging out his shingle. . . . Sarah Epperson designing clothes for women. . . . Fred Everett with a girl in every port. He's in the navy now! . . . Rex Newman selling shoes to half of Bristol. What a salesman! . . . Doris

Bewley singing over the radio. . . . Walter Buckles trying to charge for air. Who said HE could run a filling station? . . . Evelyn Conner, Petty's newest model for legs. . . . Kathryn Bondurant, Katherine McKamey, and Virginia Stewart teaching school. . . . "Pa" Sisler rounding up his family. . . . Carolyn Cowan cheerleading in an Eastern college. . . . Hunter Johnston sighing whenever she hears "Stardust". It's HIS favorite song. . . . Sue Rogers the wife of the Chief of Police. . . . Elizabeth Thomas seen frequently with visitors from Kingsport. . . . Winfield Stickley the owner of a dairy. . . . Mary Lynn Babb pianist in a local church. . . . Shirley Baumgardner driving a Greyhound bus. . . . Ruby Hamm now a graduate nurse. . . . Edith Fleenor selling typewriters to people who don't need them. . . . Claire Evelyn Boyd chauffeuring Mr. Ross around. . . . Gaynelle Fleenor dating some Johnson City boys. . . . Brandon Hagey in a six-day bicycle race. . . . Chester Butterworth an authority on styles for women. . . . Herbert Smith being crowned Mr. America. . . . Marjorie Freels social secretary for a famous society woman. . . . Henri Doriot endorsing Palmolive—"for that schoolboy complexion". . . . Mary Alice Mottern hostess of a large hotel. . . . Roy Heninger building a house—all by himself, too. . . . Carolyn Grubbs practicing her piano lesson. . . . Wade Foster leader of a group of Junior G-men. . . . Catharine Gray throwing dishes at her husband. . . . Elizabeth Hawk, Armeta Leonard, and Louise Mann going around the world together. . . . Carolean Pyle a telephone operator. . . . Robert Crenshaw and Carmack Carrier still trying to figure out what chemistry is all about. . . . Martha Post writing songs. . . . Margaret Phillippi conducting a cooking school. . . . Anne Wayland in charge of a kindergarten. . . . Nell Crockett modeling for Walt Disney's "Snow White Returns". . . . Betsy Sutherland editor of a magazine.

As the last face fades away I am aroused by a wild cheer from the crowd. Here are the teams returning to the field—returning to win the game for Tennessee High and for the Class of '39.

CLASS POEM TO GRADUATION

Laugh and be gay—
We've achieved our goal,
And it's a wonderful time of our lives.
Seniors we've always envied,
But now that we're here—
We seem to regret—

For it means leaving the bells, and the
friendly halls
The mad rush and locker keys—
And yet—
We're going forward—we can't be stop-
ped—
To other halls, and bells, and keys.

Regret ?
I do—
In a way.

—MARGARET ANDERSON.



JUNIOR CLASS

EVELYN ARNOLD
 FRANCES ARNOLD
 JOE BACHMAN

JAMES BAIRD
 MILDRED BIBEE
 BILL BIRDWELL

NELL BLACKLEY
 MARGARET KATE BLEVINS
 JANE BROGLIN

BETTY JO BROWN
 LOUISE BUSH
 EVELYN CARRIER

KATHERINE CARSON
 MILDRED COLE

BILLY COX
 MARY ANN CASSIDY
 CHARLOTTE CRENSHAW

ELIZABETH DIX
 RUTH CRAWFORD
 WAHNITA DROKE

JUNIOR CLASS

KATHLEEN FEAGINS
 ROY FAIDLEY
 BETSY FERGUSON

ERNEST FISHER
 JIMMY FULWIDER
 MARGARET FURGE

JUNE GODSEY
 JUNE GRAY
 LUCILE GRIMES

MARGARET HARKINS
 ALICE HENNIGER
 EILEEN HENNIGER

CLAUDINE HERRON
 EDNA RUTH HICKHAM

KATHRYN HILL
 JOE HICKS
 ELIZABETH HUGHES

PAT JOHNSON
 JANICE VAN HOOK
 DUNGAN KAYLOR



JUNIOR CLASS

ELEANOR KEEBLE

FLORENCE LANE

ILLA LANE

BERNICE LEE

HOWARD LILLEY

JACK LOGAN

HELEN MOORE

MARJORIE MERCER

JEANNETTE McCROSKEY

MARGIE O'DELL
KATHARYN McKAMEY

DOROTHY PAIR

KATHARINE PYLE

EUGENE PHIPPS

ROSINA RAINERO

BUCKLEY RADER

WAYNE RADER

MARY NELL RHEA

EUGENE REYNOLDS

JUNIOR CLASS

MORRIS ROSS
 ELIZABETH RUTHERFORD
 DICK SHINN

ROBERT SHOAF
 DONALD SHUMAKER
 JUDY SMITH

VIRGINIA SMITH
 EVELYN SPICER
 VETA STOUT

ROBERT TESTER
 FRANK TAYLOR
 FRANK THOMAS
 MARY ANNE TORBETT

BUDDY THOMPSON
 S. L. WILKERSON
 HASKELL WEBB

DONALD WHITE
 ARDELLA YOUNG
 JESS WORLEY





SOPHOMORE CLASS OFFICERS

FALL

MORRIS COLLINS ---- Pres.
ALBERT KING ---- V.-Pres.
CHARLES PETERS --- Secy.
NELWYN KING ---- Treas.

SPRING

CHARLES PETERS --- Pres.
ELEANOR EPPERSON
V.-Pres.
NELWYN KING ----- Secy.
KARL SMITH ----- Treas.



FRESHMAN CLASS OFFICERS

FALL

STUART INGRAM --- Pres.
ROBERT BOYD ---- V.-Pres.
WARREN PHILLIPPI -- Secy.
PRESTON O'DELL --- Treas.

SPRING

DON STICKLEY ----- Pres.
WILFORD GRAY -- V.-Pres.
WAYNE McDONALD . Secy.
JAMES ATKINS ---- Treas.
MARION COLVARD
Sgt.-at-Arms



SUB-FRESHMAN CLASS OFFICERS

FALL

BUD CLARK ----- Pres.
JEAN BUCKLES --- V.-Pres.
ROSEMARY JONES -- Secy.
DICK EASLEY --- Treas.

SPRING

JAMES ANDERSON --- Pres.
FAYE LANE ----- V.-Pres.
MARY JANE POWERS Secy.
ALONZO HENRY --- Treas.

SPONSORS

Sophomore Class: MISS SMITH, MR. MOONEY, MISS DRYDEN.

Freshman Class: MISS FORTUNE, MISS TAYLOR, MR. SOLOMON.

Sub-Freshman Class: MRS. MARNEY, MISS WYMAN, MR. ESSER, MISS LYNN.

SOPHOMORE CLASS

- 1st Row:** V. GRAHL, P. CARNAHAN, J. BOOHER, B. HARROP, J. BRADDOCK, D. REAVES, N. JOHNSTON, C. BUTTERWORTH, L. WATSON, M. A. NETHERLAND.
- 2nd Row:** B. TAIT, K. MORGAN, R. LISANBY, M. F. THOMPSON, N. KING, E. CALDWELL, W. BREEDLOVE, E. MCCLELLAND, J. WOLFORD, M. PETERS, D. HAGY.
- 3rd Row:** J. BREEDING, C. PTERS, C. HARRIS, B. WILLIAMS, A. KING, M. DEFRIECE, B. TURNER, C. REPASS, C. MCEWEN, G. ZORY, K. THOMAS, A. SPARGER.
- 4th Row:** D. CATHER, B. MITCHELL, J. COMBS, H. DAVIDSON, A. FELTY, B. WYATT, P. RIPLEY, O. D. HAMRICK, H. PETERS, B. MCEWEN.
- 5th Row:** V. CARRIER, M. COLLINS, J. E. SHUPE, B. JOHNSON, D. PARRISH, R. PEARMAN, C. DISHNER, D. MASSINGILL, F. RAMSEY.

FRESHMAN CLASS

- 1st:** MISS FORTUNE, L. BEATTY, D. GRIMES, M. J. CRENSHAW, G. BUCKLES, MISS TAYLOR, B. HAGY, R. BOYD, B. NICAR, S. INGRAM, B. RUTHERFORD, C. HORNE.
- 2nd:** R. BOUTON, H. KELLAR, D. NEEL, V. BABB, J. BAUMGARDNER, E. LOGAN, A. LOGAN, C. ROCKETT, B. HAMMER, G. STANSBERRY, W. McDONALD.
- 3rd:** M. GLOVER, M. R. VANCE, V. LYNCH, N. WEAVER, L. HUNT, D. ARNOLD, P. O'DELL, J. ATKINS, J. REEL.
- 4th:** F. HARKLEROAD, A. ADAMS, L. BOWERY, L. HARR, A. SMITH, B. JANES, M. J. HULSEY, C. MCCROSKEY, W. GRAY.
- 5th:** G. WINEBARGER, N. MCCROSKEY, L. HODGES, S. WOLFORD, W. CARRIER, G. THOMAS, I. FRAZIER, A. SLUSS, C. GRAY, B. LOUDY, B. J. LANE, S. LEE, C. BASHAM, B. MCGHEE.
- 6th:** B. HILTON, L. JONES, MR. SOLOMON, J. SMYTHE, L. DULANEY, C. W. JONES, J. RINGLEY, D. STICKLEY, C. O'DELL, C. CROSS, H. BARGER, E. COMBS, J. L. BOLLING.

SUB-FRESHMAN CLASS

- 1st:** D. EASLEY, B. CLARK, J. BUCKLES, R. JONES.
- 2nd:** S. REECE, M. COLVARD, J. REED, R. B. JENKINS, M. HAVENS, C. SENTER, L. FLEENOR, J. DEFRIECE, B. CAMPBELL, J. MILLARD.
- 3rd:** R. ALLEY, N. HAGGEN, J. W. STEVENS, J. SNAPP, W. COMERFORD, B. HAMM, G. BACHMAN, D. MAUK, H. GRAY.
- 4th:** B. FRAZIER, E. MOORE, B. BOYD, M. GLOVER, D. SAPOGOTTI, E. MCCLELLAND, M. HORNE, A. WARREN, N. BRUBAKER, H. BROWN, M. COMBS.
- 5th:** J. BLEVINS, H. ROBERTS, C. BAKER, P. DOUGHERTY, E. VIRES, B. COFFEY, B. YOUNG, E. ARRANTS, B. RHYMER, C. BUCKLES, T. DRIVER, B. BASHAM, J. FAUCETTE, J. RUCKER, J. ANDERSON.
- 6th:** B. LOVE, B. FAUCETTE, C. FRANCISCO, K. HOOKS, W. C. LAMBERT, E. HAGY, R. AUSTIN, J. HARKLEROAD, B. LESLIE, W. HENNINGER, B. JANES, E. ELLIOT, J. WARREN, R. BARNETTE, L. THOMPSON, J. SKINNER, C. HARRIS, A. RIDDLE, L. R. BOYD, O. WHITE, R. MOTTERN.

SAIL ON, VIKING SHIP!

If Tennessee were a great big ship
And the Junior class were seamen,
On the ocean of knowledge we'd take a trip
With our colors gaily streamin'.

We'd sail right into the Senior Port
And fill our cargoes with knowledge,
And then we'd sail right out again
To the port of some great college.

Then we'd leave our ship to another crew
Though—until Eternity's dawn
We'll say to our good ship Tennessee High
Sail on—Sail on—Sail on!

—MARY BETTY HUFF

JUNIOR CLASS SONG

We ascend into our Viking launch,
Large and strong and firm and staunch.
Juniors, we, of Tennessee High
Ready for her to do or die.

The Ship is prepared and ready to sail—
And ready to face the fiercest gale, oh!
Many are the dangers we can bold
For waving above us is the blue and gold.

The voyage is over, and the work is done,
Our ship will have reached the setting sun.
So let's pledge our loyalty in the coming year
To Tennessee High, Alma Mater dear.

—BUDDY THOMPSON

COLORS: Blue and Gold

FLOWER: Talisman Rose

MOTTO: "Work and Win"

JUNIOR OFFICERS

FALL

JESS WORLEY President
S. L. WILKERSON Vice-President
FLORENCE LANE Secretary
JOE BACHMAN Treasurer
DOUGLAS OWEN Sergeant-at-Arms

SPRING

ALBERT PEOPLES
KATHRYN HILL
JUDY SMITH
BUDDY THOMPSON
ROBERT KOONTZ



Organizations

THE CADMEA STAFF 1939



WINFIELD
STICKLEY
ATHLETICS

BERNEY
BURLESON
SPONSOR

SAM
BEARD
BUSINESS

CRAIG
CALDWELL
ADVERTISING

ELLEN
ROLLINS
TYPIST

HUNTER
JOHNSTON
SECRETARY

HARRIET
HAMMER
TYPIST

CAROLYN
COWAN
SNAPSHOTS

FRANCES
QUILLEN
TYPIST

SARAH
EPPERSON
ADVERTISING

ELEANOR
KEEBLE
TYPIST

DORIS
BEWLEY
TYPIST

MARTHA
POST
SECRETARY

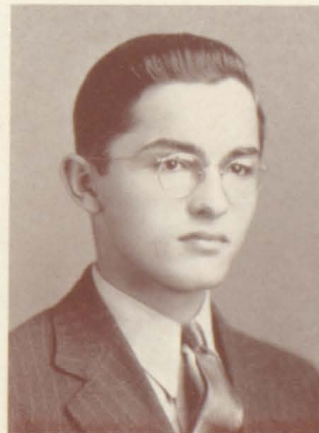
LOIS
CALHOUN
LITERARY

ADA LYNN
HAWKINS
SPORTS

ELIZABETH
HOUSER
LITERARY

JACK
COWAN
EDITOR

FRANK
DEFRIECE
BUSINESS
MANAGER





OFFICERS

ALVIN COMBS ----- Pres.
 MARTHA POST --- V.-Pres.
 ELIZABETH FLEMING
 Secy.-Treas.
 CLAIRE E. BOYD Librarian

GLEE CLUB

- 1st Row:** F. QUILLEN, W. MARCY, V. O'DELL, M. E. DAVIS, C. GRUBBS, E. FAULKNER, A. LEONARD, G. BUCKLES.
- 2nd Row:** A. O'DELL, M. FURGE, A. HENNINGER, E. R. HICKAM, E. FLEENOR, F. LONG, F. ARNOLD.
- 3rd Row:** M. MERCER, R. LISANBY, H. F. STOVER, M. A. MOTTERN, R. HAMM, M. BIBEE, D. LOWE, R. REEVES.
- 4th Row:** A. SPICER, E. SPICER, M. COLE, C. HERRON, M. JANES, J. BRADDOCK, K. SWINEY.
- 5th Row:** MISS NININGER, D. CALHOUN, L. REMSON, J. DeVAULT, B. R. FREELS, E. FLEMING, L. SMITH, S. GRIMES, B. J. SHERWOOD.
- 6th Row:** C. FRAZIER, V. STUART, R. SOPHAGOTTI, M. POST, D. MCGHEE, M. DEFRIECE.
- 7th Row:** MR. JOHNSON, B. CATHER, D. KAYLOR, J. HILLARD, E. FISHER, H. SMITH, A. HENRY, V. CARRIER.



INTRAMURAL COUNCIL

- 1st Row:** J. GODSEY, R. LISANBY.
- 2nd Row:** J. ZINT, G. BUCKLES, N. KING.
- 3rd Row:** D. NEAL, E. OWEN, MARGARET McCARY.
- 4th Row:** MILDRED McCARY, MISS WYMAN, M. R. VANCE.
 Miss WYMAN, Sponsor

There are no officers selected for the Intramural Council.



OFFICERS

President—
 HARRIET HAMMER
 ELIZABETH FLEMING

Vice-President—
 ADELAIDE MAHONEY
 HARRIET HAMMER

Secretary—
 CAROLYN COWAN
 ADELAIDE MAHONEY

Treasurer—
 SARAH ELIZABETH
 EPPERSON
 MARTHA POST

Sponsor—
 MRS. MARNEY



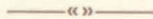
GIRLS' HI-Y

Left to Right, 1st Row: C. COWAN, H. HAMMER, S. EPPERSON, A. MAHONEY.

2nd Row: D. KEESLING, H. JOHNSON, F. QUILLEN, F. LANE, E. ROLLINS, H. F. STOVER, M. D. GREER, A. SIMMONS, E. HOUSER.

3rd Row: J. SMITH, R. RAINERO, D. MCCLELLAND, L. CALHOUN, E. MOORE, A. WAYLAND, C. LILLEY, E. ROBERTS, M. FREELS, M. E. DAVIS.

4th Row: C. CRENSHAW, B. J. BROWN, M. B. HUFF, M. POST, E. FLEMING, G. FLEENOR, K. BONDURANT, N. HILT, D. BEWLEY, E. KEEBLE.



"T" CLUB

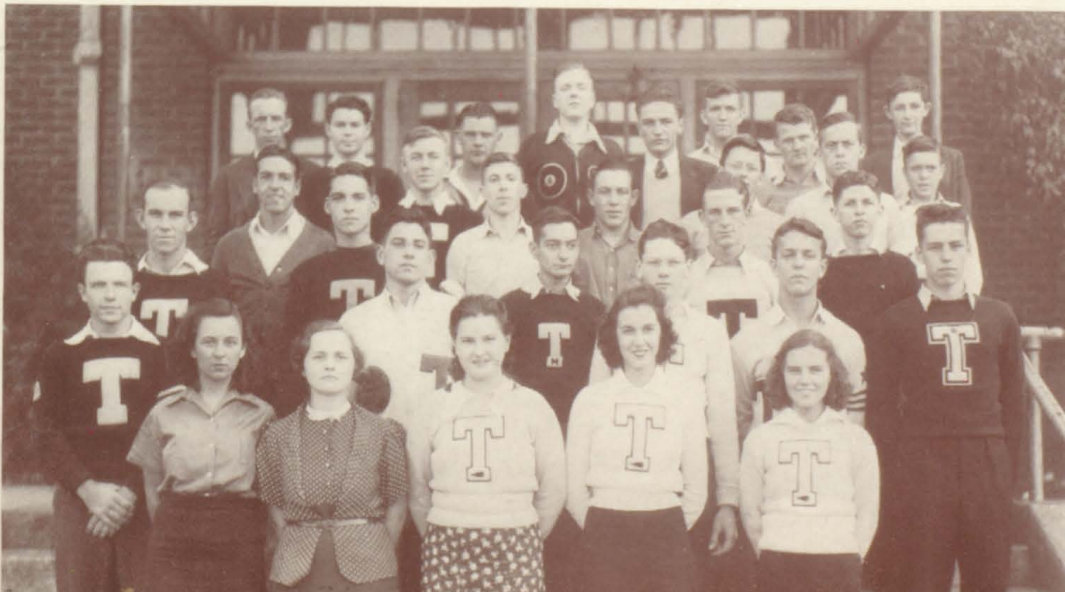
1st Row: M. McCARY, S. BAUMGARDNER, A. MAHONEY, C. COWAN, C. LILLEY.

2nd Row: D. OWEN, J. PEOPLES, P. O'DELL, S. INGRAM, B. THOMAS, H. MORRELL.

3rd Row: J. NEWTON, F. VANCE, F. EVERETT, D. McKEE.

4th Row: F. NIDIFFER, W. STICKLEY, A. PEOPLES, V. CARRIER, J. WILSON, M. COLVARD, B. J. LANE.

5th Row: MR. ESSER, E. WHITAKER, M. COLLINS, T. SLACK, M. ROSS, D. STICKLEY, C. CROSS, B. HAGY.



OFFICERS

FRANK NIDIFFER ---- Pres.
 JAMES NEWTON -- V.-Pres.
 ALBERT PEOPLES
 Secy.-Treas.
 DOUG OWEN - Sgt.-at-Arms
 COACH SOLOMON,
 COACH ESSER -- Sponsors



OFFICERS

FALL

Presidents

French IV - ELLEN ROLLINS
 French III FRANK NIDIFFER
 French II DOUGLAS OWEN
 French I MARY BETTY HUFF

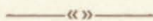
SPRING

Presidents

French IV
 HARTSELL MORRELL
 French III DOROTHY BAKER
 French II ELEANOR KEEBLE
 French I
 CHARLOTTE CRENSHAW
 Sponsor
 MISS DRYDEN

FRENCH CLUB

- 1st Row:** E. ROLLINS, F. NIDIFFER, M. B. HUFF.
- 2nd Row:** M. FREELS, MISS DRYDEN, D. MCGHEE, D. KEESLING, F. QUILLEN, H. HAMMER, F. LANE, D. RUTHERORD, W. MARCY, M. A. MOTTERN, R. SMITH.
- 3rd Row:** M. POST, E. FLEMING, G. FLEENOR, D. BEWLEY, M. JANES, A. SIMMONS, M. A. CASSIDY, J. BROGLIN, M. S. SMITH, V. ASHE.
- 4th Row:** J. SMITH, K. PYLE, K. BONDURANT, R. RAINERO, L. BUSH, B. J. BROWN, J. BRISCOE, V. O'DELL, D. BAKER, F. ARNOLD, E. FLEENOR, M. L. BABB, C. GRAY, M. MARION, D. LOWE.
- 5th Row:** V. STOUT, M. FURGE, M. A. TORBETT, C. CRENSHAW, M. N. RHEA, E. CARRIER, J. GODSEY, M. BIBEE, E. KEEBLE, A. WAYLAND.
- 6th Row:** B. THOMPSON, N. BLACKLEY, R. SHINN, J. GRAY, K. CARSON, E. RUTHERFORD, J. WILSON, D. KAYLOR, W. DROKE, B. PETERS, W. STICKLEY, B. GOODMAN, E. CASS.
- 4th Row:** E. WHITAKER, R. MCANGE, F. DEFRIECE, J. LOGAN, T. DAVIS, T. MORGAN, W. BUCKLES, M. ROSS, N. SMITH, J. KESTNER, R. SHOAF, J. HICKS, J. P. SENTER, H. MORRELL.



BAND

- 1st Row:** Sponsor, M. BIBEE, N. JOHNSTON, N. SMITH, B. SOLOMON, H. POST, H. ROBERTS, L. STOPHEL, C. MCNEW, B. TURNER, L. RHEA, PROFESSOR JOHNSON, Sponsor, K. HILL, G. BROWN.
- 2nd Row:** M. McCARY, C. McEWEN, A. WALLACE, M. POST, C. BUTTERWORTH, C. HELTON, A. MEADOWS, D. MASSINGILL.
- 3rd Row:** W. SLAGEL, B. FLEMING, J. LOGAN, B. McEWEN.
- 4th Row:** H. BROWN, J. SISLER, B. MCGHEE.

MR. JOHNSON
 Director

There are no elected officers in the Band.



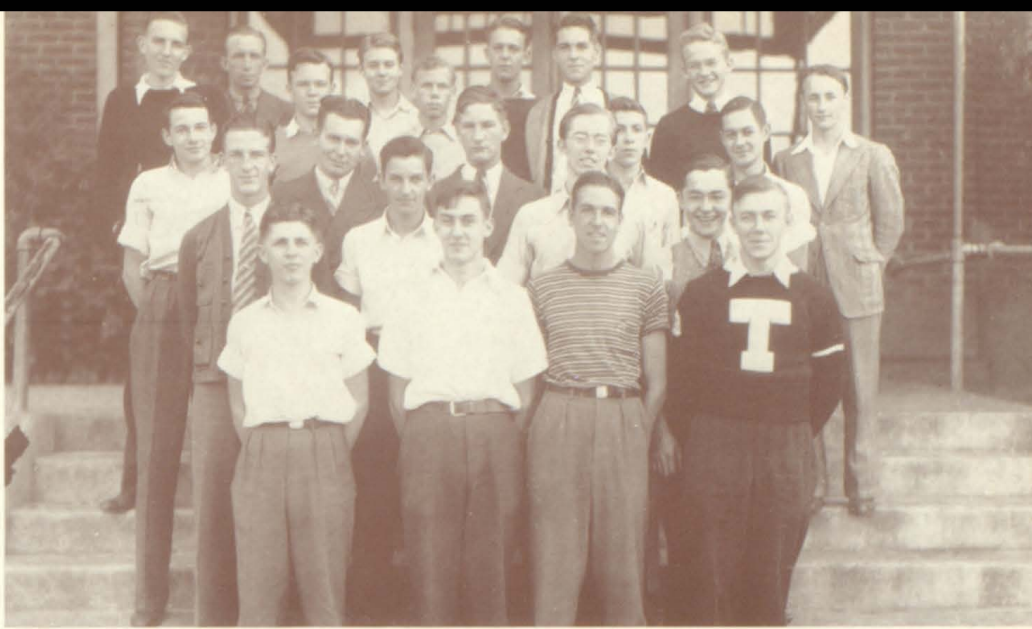
OFFICERS

FALL

CRAIG CALDWELL -- Pres.
WINFIELD STICKLEY
V.-Pres.
FRANK NIDIFFER --- Secy.
DAVID MCKEE ----- Treas.
DOUG OWEN - Sgt.-at-Arms

SPRING

WINFIELD STICKLEY - Pres.
FRED VANCE ----- V.-Pres.
HENRI DORIOT ---- Treas.
DAVID MCKEE ----- Secy.
FRED EVERETT
Sgt.-at-Arms
Sponsor
MR. ESSER



BOYS' HI-Y

1st Row: D. MCKEE, C. CALDWELL, F. NIDIFFER, W. STICKLEY.
2nd Row: F. EVERETT, B. PETERS, F. DEFRIECE, J. COWAN.
3rd Row: E. PARKS, M. DISHNER, R. MCANGE, A. PEOPLES, W. BUCKLES.
4th Row: R. CRENSHAW, MR. ESSER, J. WORLEY, B. THOMPSON, J. BACHMAN, B. THOMAS, F. VANCE,
B. GOODMAN, H. DORIOT.

«»

SPEECH CLUB

1st Row: MRS. CALDWELL, M. B. HUFF, M. POST, S. BAUMGARDNER, S. BEARD, C. CALDWELL, MR. DOVE.
2nd Row: J. KESTNER, E. CASS, C. MCEWEN, B. TURNER, J. BAIRD, E. WHITAKER, P. DOUGHTERY,
T. DRIVER, D. KAYLOR, B. WILLIAMS, H. POST.
3rd Row: B. GLOVER, H. HOGAN, M. FREELS, W. MARCY, E. CALDWELL, N. KING, E. EPPERSON, M. F.
THOMPSON, J. WOLFORD, J. MCCROSKEY, J. DUTTON, D. CALHOUN.



OFFICERS

FALL

MARY BETTY HUFF -- Pres.
MARTHA POST --- V.-Pres.
SHIRLEY BAUMGARDNER
Secy.
SAM BEARD ----- Treas.

SPRING

SAM BEARD --- Pres.
CRAIG CALDWELL - V.-Pres.
SHIRLEY BAUMGARDNER
Secy.
BETSY FERGUSON -- Treas.
Sponsors
MR. DOVE and
MRS. CALDWELL

OFFICERS

FALL

Presidents
BOB CRENSHAW
HENRI DORIOT

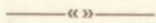
SPRING

LYNNWOOD RHEA
ERSKINE PARKS
Sponsor
MISS DELLE SMITH



ALCHEMIST CLUB

- 1st Row: F. VANCE, N. HILT, R. SMITH, S. YANCY, E. MOORE, D. BAKER, H. DORIOT, L. RHEA.
2nd Row: E. J. MARTIN, S. MCGHEE, A. MAHONEY, E. HOUSER, A. SIMMONS, M. E. DAVIS, A. FOGARTY.
3rd Row: S. BAUMGARDNER, D. BEWLEY, L. CALHOUN, K. BONDURANT, R. CRAWFORD, M. L. BABB,
V. STOUT, E. DIX, R. HAMM, J. BRISCOE, MISS SMITH, H. HAMMER.
4th Row: F. EVERETT, C. BUTTERWORTH, E. CASS, J. COWAN, T. MORGAN, J. SISLER.
5th Row: A. FELTY, E. PARKS, F. DEFRIECE, E. WHITAKER, C. CALDWELL, D. MCKEE.



MAROON AND WHITE

- 1st Row: K. CARSON, S. MCGHEE, A. MAHONEY, R. RAINERO.
2nd Row: K. PYLE, W. MARCY, D. BAKER, M. ANDERSON, M. E. DAVIS.
3rd Row: C. CRENSHAW, B. J. BROWN, S. BAUMGARDNER, G. FLEENOR, E. FLEMING, F. LANE.
4th Row: B. SOLOMON, B. THOMPSON, F. NIDIFFER, J. WORLEY.



OFFICERS

Editor
ADELAIDE MAHONEY
Business Managers
KATHERINE CARSON
and
ROSINA RAINERO
Sponsor
MISS BROCE



OFFICERS

FALL

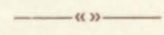
WALTER BUCKLES -- Pres.
 ELLEN ROLLINS -- V.-Pres.
 DORIS BEWLEY ---- Secy.
 JIMMY WILSON ---- Treas.

SPRING

BERNARD PETERS --- Pres.
 WALTER BUCKLES - V.-Pres.
 DORIS BEWLEY ---- Secy.
 ERSKINE PARKS ---- Treas.
 Sponsor
 MR. GILLINGHAM

DRAMATICS CLUB

- 1st Row:** D. KEESLING, D. BEWLEY, M. D. GREER, W. MARCY, H. STOVER, F. QUILLEN, S. EPPERSON, E. ROLLINS, F. LANE, W. BUCKLES, J. WILSON, G. STANSBERRY.
- 2nd Row:** C. LILLEY, E. HOUSER, F. ARNOLD, A. SIMMONS, V. O'DELL, D. REEVES, C. E. BOYD, H. HAMMER, C. COWAN, K. HILL, D. LEONARD, E. LOGGANS.
- 3rd Row:** M. FREELS, B. J. BROWN, R. RAINERO, L. BUSH, M. E. DAVIS, D. BAKER, M. ANDERSON, R. HAMM, E. FLEENOR, J. BAIRD.
- 4th Row:** A. MAHONEY, W. BREEDLOVE, M. L. BABB, L. SMITH, L. REMSON, J. DeVAULT, B. R. FREELS, M. N. RHEA, E. RUTHERFORD, M. DEFRIECE.
- 5th Row:** K. PYLE, D. GRIMES, J. McCROSKEY, E. EPPERSON, J. BOOHER, E. WHITAKER, C. CRENSHAW, J. GRAY, J. SMITH, MR. GILLINGHAM, H. DORIOT.
- 6th Row:** D. KAYLOR, E. PARKS, B. PETERS, M. ROSS, H. SMITH, W. STICKLEY, J. BACHMAN, D. MAS-SINGILL, J. WORLEY, B. HAMMER.



ALL-STUDENTS CLUB

- 1st Row:** C. CALDWELL, F. NIDIFFER, F. VANCE, A. MAHONEY.
- 2nd Row:** B. CLARK, S. INGRAM, J. COWAN, H. HAMMER, E. ROLLINS, M. B. HUFF.
- 3rd Row:** F. EVERETT, W. BUCKLES, R. CRENSHAW, M. COLLINS, H. DORIOT, J. WILSON, J. WORLEY.

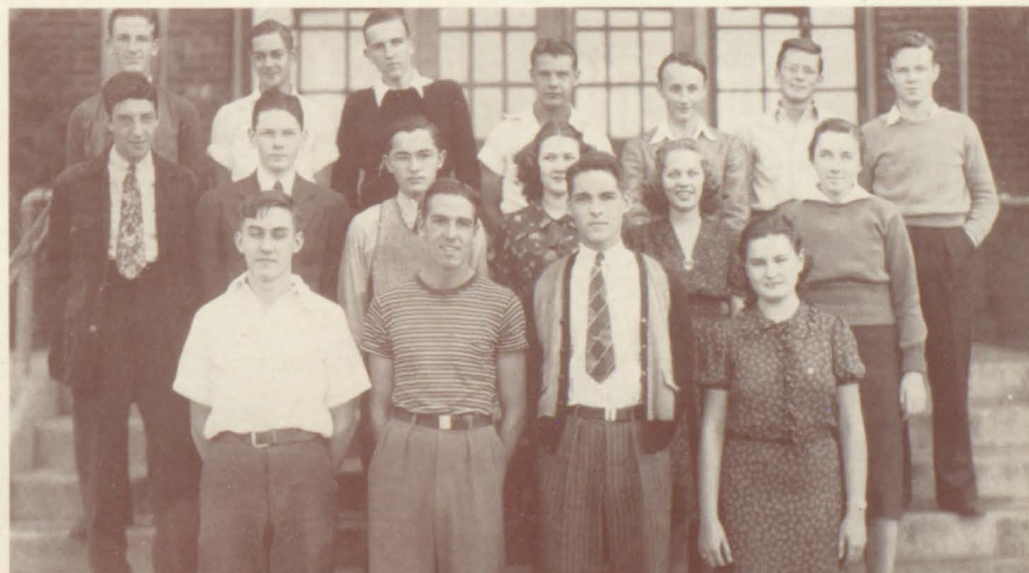
OFFICERS

FALL

FRED VANCE ----- Pres.
 FRANK NIDIFFER -- V.-Pres.
 ADELAIDE MAHONEY Secy.
 CRAIG CALDWELL -- Treas.

SPRING

FRANK NIDIFFER --- Pres.
 FRED VANCE ----- V.-Pres.
 CAROLYN COWAN -- Secy.
 ADELAIDE MAHONEY Treas.



REVIEW OF YEAR'S CLUB ACTIVITIES

In reviewing the club aims, entertainments, and accomplishments, the Cadmus Club is proud, with the rest of the school, in recognizing the many and varied activities of the thirteen organizations. For itself, the Cadmus Club sadly looks to the future faced with a lack of such an accomplished artist-editor as Jack Cowan and the graduation of an efficient and cooperative staff that has helped place the CADMEA among the first class ones in the nation, as rated by the National Scholastic Press Association.

The band has been very active throughout the past year. The members of the band provided music for all of Tennessee's home football games, and several basket-ball games. They played in short concerts before the Junior play and before the operetta, and for pep meetings in chapel. The entire band went to Knoxville on April 15 to participate in High School Day, which was held at the University of Tennessee. The prospects are promising for a larger membership next year according to Mr. Johnson, the director.

The Alchemist Club has as a purpose the continuation of work which has proved interesting in the classroom. The activities of the club include experiments, reports, and several short plays. One play, *THE LIFE OF MADAME CURIE*, was presented in chapel under the sponsorship of Miss Smith. The members of the club went to Mendota to visit a natural gas well.

The purpose of the Speech Club is to provide an opportunity for participation in speech activities. During the past year the Speech Club has entered five debate tournaments and has sponsored several radio programs. Under the supervision of Mr. Dove and Mrs. Caldwell trips were made to debates in Bluefield, Kingsport, and Johnson City.

The All Students' Council was formed to take charge of all activities in which the student body as a whole is concerned and to arouse the loyalty of the students. The Council planned entertaining and helpful chapel programs for the year, and helped arouse school spirit among the students. Outstanding was the work of Fred Vance and Frank Nidiffer, presidents of the Council.

The Girls' Hi-Y, sponsored by Mrs. Marney, has as a purpose to maintenance and extension throughout the school and community, high ideals of Christian living. The club members assisted the American Legion in the selling of tickets for the Legion Circus, renewed a Spirit Drive, and helped the Blue Stocking Club at Society Day. In the fall the members and guests attended an outing at Cherokee and a banquet was held during the spring term.

Intra-Mural Council, directed by Miss Wyman, which provides athletics for girls within the school, offered various activities including basket-ball, volley-ball, soccer, tumbling, table tennis, tennis, baseball, hiking and skating.

The Dramatics Club was formed to develop in pupils an appreciation of drama and the production of plays and to furnish training along lines of writing and acting modern dramas.

Semi-monthly meetings with Mr. Gillingham and Miss Sterett throughout the year have furnished training and entertainment for seventy-five members of the dramatics club. The casts for Junior and Senior plays are taken from the membership of this club.

The following have for four years made the Dramatics Club one of the leading clubs of the school: Winfield Stickley, Carolyn Cowan, Ellen Rollins and Doris Bewley.

The French Club has as its purpose a better understanding of the customs, history, and people of France in order to gain the knowledge of the place France has in world history.

The French Club, sponsored by Miss Dryden, has had regular class programs every two weeks, and the annual assembly program. During the course of the year very interesting and varied programs have been given about the country of France, by the students and instructors from near-by colleges. For the first time the French Club of Tennessee High School is entering the State French Examination at Johnson City.

During the past year the Boys' Hi-Y has given assembly programs, one of especial interest—that dealing with the hobbies of the members. The club meetings have been featured by programs and talks. Mr. Esser states that the purpose of this organization is to create, maintain, and extend throughout the school and community high standards of Christian character. At Christmas time the Boys' Hi-Y gave three Santa Pals a happy holiday. Throughout the year members have been entertained with outings and banquets. This organization gave assistance to Girls' Hi-Y in Adelaide Mahoney's *MAROON AND WHITE* spring school spirit surge.

Miss Broce, who sponsors the *MAROON AND WHITE*, informs the CADMEA that the school paper, a monthly publication, is a member of the Quill and Scroll and holds a first class rating by the National Scholastic Association. Staff members Dorothy McGhee and Frank Nidiffer have been recommended for the Quill and Scroll, which means national recognition. The *MAROON AND WHITE* has ever as its purpose a contribution that will help mold a better Tennessee High.



Athletics

1938 VIKING FOOTBALL

SEASON'S SUMMARY

The Vikings closed the season with a record of six won and four lost. The opposition scored 127 points while our team ran up 230 points. Captain Billy Thomas and John Peoples led the scoring. In finishing the '38 season five boys, John Peoples, Billy Thomas, Captain Jim Newton, Fred Vance, Fred Everett, and Winfield Stickley rounded out their high school football careers.

Douglas Owen, a Junior who plays a very aggressive game at guard, will captain the team next season. Returning lettermen are Tom Riley, Bob Koontz, Cary Gray, Frank Nidiffer, Clayton Cross, Vivian Carrier, Marion Colvard, Morris Collin and Captain Owen.

Several likely-looking prospects who should see plenty of action next season are Warren Phillippi, Frank Taylor, Carl Smith, Roy Faidley, Hugh Barger, Gilbert Kyle, Jimmy Fullwider, Duke Coffee, Billy Sparger, Lee Harkleroad and Don Stickley.

Thursday, September 15—Tennessee High Vikings started the season in great style by generally outplaying a fighting Newport eleven by a 33-0 score. The play of the Vikings was ragged at times but at other times they blocked, tackled, and ran the ball as a team should.

Friday, September 23—The Vikings went to Erwin where they lost a hard-fought game 12-6. Erwin scored their first touchdown soon after the game began and from there until the half they fought on even terms. Both teams scored in the last half and the Vikings were defeated chiefly through inability to cope with the strong Erwin line.

Friday, September 30—Jonesboro presented a light but scrappy team that was overpowered 46-0. The team was clicking well as the Vikings' spirited line blocked well and rushed the Jonesboro backfield throughout the game.

Friday, October 7—Johnson City came to town with a team which was supposed to beat us by as much as two touchdowns. In displaying the most vicious blocking and tackling and the most aggressive team play that a Tennessee team has shown in ages the Vikings upset the Hill-Toppers 33-6.

(Continued on Page 48)

CITY CHAMPIONS VARSITY FOOTBALL SQUAD

- 1st Row:** C. GRAY, D. STICKLEY, C. CROSS, F. EVERETT, J. NEWTON, J. PEOPLES, D. OWEN, M. COLVARD, V. CARRIER.
- 2nd Row:** T. RILEY, R. KOONTZ, M. COLLINS, F. TAYLOR, D. PARRISH, J. SISLER, K. SMITH, F. VANCE, F. NIDIFFER, B. THOMAS.
- 3rd Row:** COACH SOLOMON, J. FULWIDER, R. FAIDLEY, W. STICKLEY, H. BARGER, G. KYLE, L. HARKLEROAD, D. COFFEY, B. SPARGER, COACH ESSER.
- 4th Row:** B. J. LANE, P. O'DELL, B. HAGY, R. TEESTER, D. MCKEE.



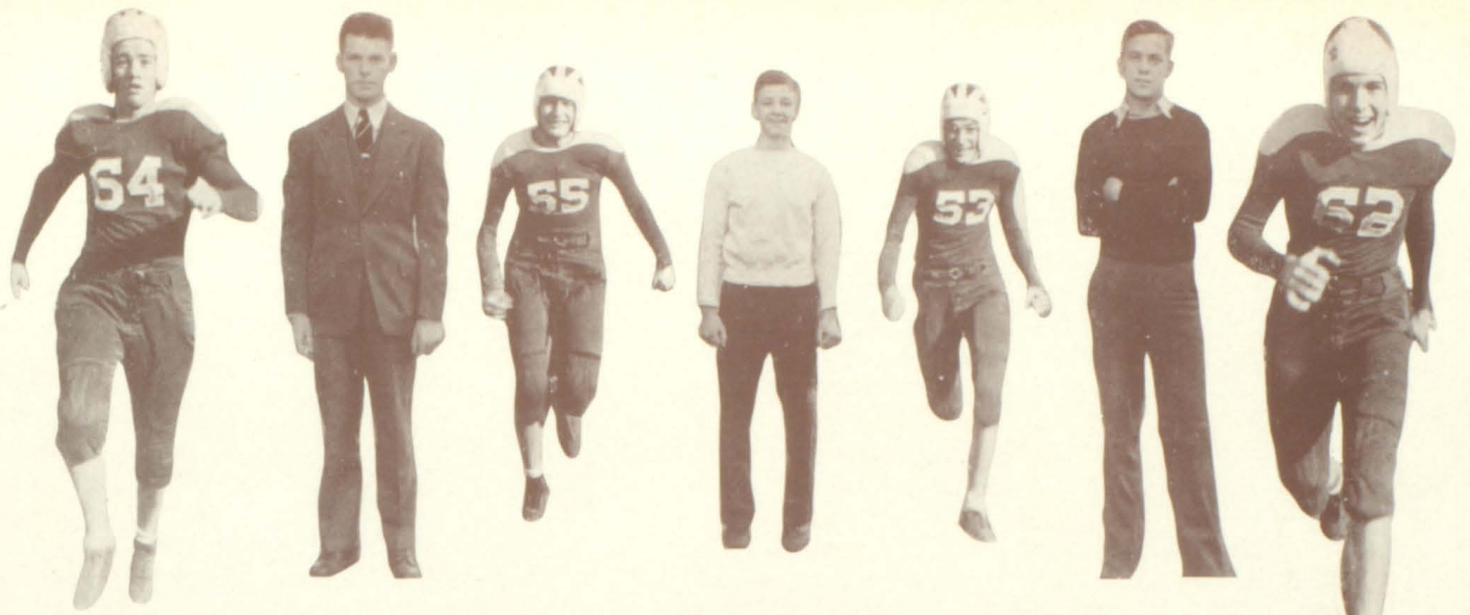


CHEERLEADERS: EPPERSON, COWAN, ROSS, INGRAM, MAHONEY, LILLEY

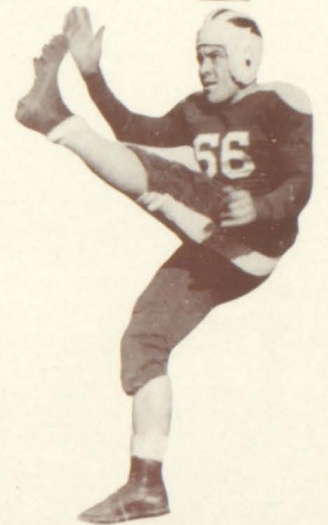
INDIVIDUAL NOTATIONS

Counterclockwise: John Peoples—Senior, fullback; carries the ball low and hard on line plays, a hard blocker and dependable man on laterals and passes . . . Frank Taylor—Junior, end; came here as a Junior from Norton and has shown promise both as a defensive and offensive end . . . Hugh Barger—Freshman, tackle; has weight to spare and should be a "bull" on defense . . . Morris Collins—Sophomore, halfback; a really great line plunger who is hard to stop. Brings back punts with plenty of power. Better than the average punter, passer and defensive player. . . Cary Gray—Sophomore, quarterback; a sure and hard blocker and tackler, has shown great promise with his weaving punt returns and drive on line plays. . . Don Stickley—Freshman, guard and tackle; has plenty of weight and should develop into a real player as a blocker and defensive player. . . Clayton Cross—Sophomore, guard; good blocker and defensive player, has plenty of fight and spirit. . . Bill Thomas—Senior, Co-Captain; very fast, shines on end runs, pass receiving and pass throwing. Also a good broken field runner and placement kicker. . . Duke Coffey—Freshman, back; good runner and shows promise as a punter and passer. . . Billy Sparger—Junior, halfback; good blocker, passer and runner. . . Douglas Owen—Junior, tackle and guard; vicious blocker and tackler; outstanding on defense. . . Bob Koontz—Junior, halfback; has plenty of drive and power and is a fine kicker. . . Roy "Chink" Faidley—Sophomore, guard; shows plenty of ability to fight hard and keep taking punishment; already as good as the average guard. . . Frank Nidiffer—Junior, end; fine pass receiver, fast on covering punts and among the best on defense. . . Fred Everett—Senior, guard; a very hard tackler and a fighter.





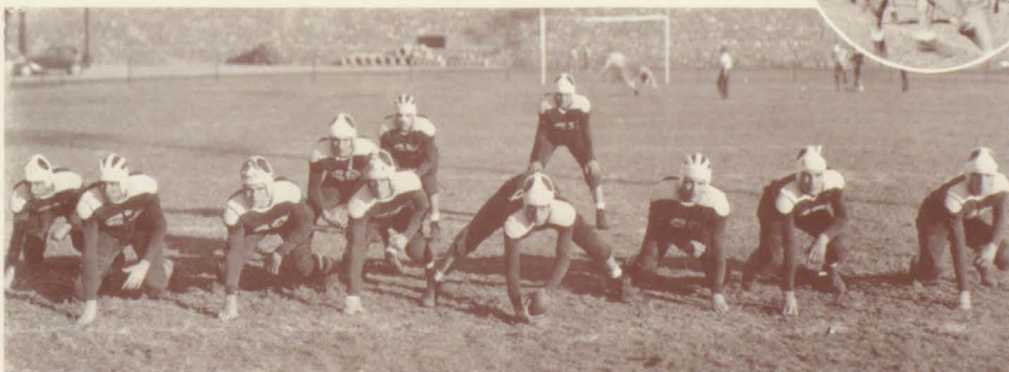
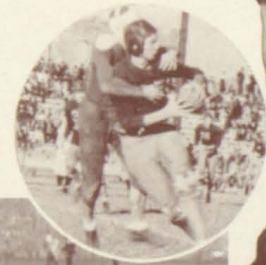
Lower Left, Moving Clockwise: Jim Newton—Senior, Captain and end; great defensive player and pass receiver. . . Winfield Stickley—Senior, tackle; capable defensive player and blocker. . . Karl Smith—Freshman, fullback; has plenty of power and needs only experience to become a first-class passer, punter, and ball carrier. . . Julian Sisler—Senior, tackle and guard; has shown much ability and fight in his first year of football. . . Tom Riley—Sophomore, tackle and end; his specialty is breaking up the opposition's end runs and off-tackle plays. Excellent pass receiver. . . Gilbert Kyle—Sophomore, guard; a promising linesman with plenty of fight and can diagnose plays quickly and tackles hard. . . Marion Colvard—Sophomore, center; one of the most consistent and dependable; hard tackler and centers the ball with the best. . . Fred Vance—Senior, tackle and end; dependable on punts, good defensive player and pass receiver. . . Vivian Carrier—Junior, guard and halfback; good defensive player who is hard to block out. Can carry the ball with plenty of power in the backfield. . . Dave Parrish—Sophomore, center; is already very accurate on his passes from center and is learning fast on defense in the line. . . Jimmy Fulwider—Junior, quarterback; though he is the lightest man on the squad, he is one of the surest and hardest tacklers, good on punt returns, has plenty of pep and lacks weight only. . . Through an inadvertent mistake, pictures are not here shown of Marvin Hawk—Junior, halfback; hard blocker and tackler, good defensive back and runner. . . Jake Phillippi—Sophomore, end and guard; who has already shown great defensive ability by breaking up most of the plays that come his way . . . and Lee Harkleroad—Sophomore, end, who should develop into a good end both offensively and defensively.



STARTING SQUAD

1st Row: F. NIDIFFER, D. OWEN, F. EVERETT, M. COLVARD, V. CARRIER, F. VANCE, J. NEWTON.

2nd Row: B. THOMAS, R. KOONTZ, J. PEOPLES, M. COLLINS.



Season's Summary (Continued on Page 45)

Friday, October 14—In a game in which players of both teams showed more fight than in any other game of the season Tennessee beat Greeneville 12-6. It was an especially sweet victory since Greeneville used to be Coach Solomon's home town.

Friday, October 21—Elizabethton, with one of the smoothest, best balanced teams to be found in this section, finally overcame Tennessee 41-7. The Vikings scored on a pass and it was an honor to even score on a team which finally proved to be the best in the state.

Friday, October 28—With substitutes and second stringers playing much of the game Tennessee swamped Rogersville 38-0. The boys fought hard and several of the younger players had a chance to show their ability under fire.

Friday, November 4—The Vikings showed the much-heard-of Bobby Cifers and the other Kingsport Indians no respect what-so-ever in the first half but finally were overcome 41-0 chiefly through the work of Cifers in the last half.

Friday, November 11—After fighting to a 7-7 tie at the half Tennessee was unable to match a last-half Morristown touchdown and thus lost 13-7.

Friday, November 18—The game of games was here! Tennessee rose to Virginia High's challenge and beat them 48-7. Sweeping end runs, passes, pass interceptions and off-tackle plays featured as the whole team played commendable ball in crushing the Orange team by the second largest score a Virginia-Tennessee game has been won by.

1938 FOOTBALL SCHEDULE

Sept. 15	Tennessee	33	Newport	0
Sept. 23	Tennessee	6	Erwin	12
Sept. 30	Tennessee	46	Jonesboro	0
Oct. 7	Tennessee	33	Johnson City	7
Oct. 14	Tennessee	12	Greeneville	6
Oct. 21	Tennessee	7	Elizabethton	41
Oct. 28	Tennessee	38	Rogersville	0
Nov. 4	Tennessee	0	Kingsport	41
Nov. 11	Tennessee	7	Morristown	13
Nov. 18	Tennessee	48	Virginia	7
Total		230		127



COACH SOLOMAN



ASST. COACH ESSER

VIKING BASKET-BALL

1938-1939

SEASON'S SUMMARY

The 1939 basket-ball team finished a very successful season with a record of 17 games won and 5 games lost. Three of the games were lost to the same team. Tennessee scored 925 points against 648 for the opponents.

This is an impressive record for any team but it is even more impressive since only six first-string players were available. Morrell and Peoples were outstanding offensively but a great amount of credit must be given to the steady, reliable rebound games of Thomas and Nidiffer and the effective guarding of Vance and Collins.

Captain Morrell, Fred Vance, and Morris Collins closed their high school basket-ball careers with the '39 season, leaving Frank Nidiffer, Albert Peoples and Frank Thomas along with several promising Junior Varsity boys to carry on next year.

Beginning the 1939 season with a rush, the Vikings defeated Blountville 39-16 with Morrell scoring fifteen points to lead the way. The boys showed much promise of developing into a first class team.

Tennessee took its first Big Six game by outscoring Johnson City 38-29 with Captain Morrell scoring twelve points to again lead the team offensively. They were beginning to handle the ball smoothly and work together well.

With Albert Peoples scoring seven points the Vikings pulled out of a very close game and beat Sullivan 20-18. The team showed that it could play under pressure by beating a team that was almost evenly matched with them.

In a scoring duel with the 1937 Alumni State Champion Team Tennessee won a 44-42 game which saw Morrell sink seventeen points. Again the Vikings showed they could play under pressure and also that they could score points when they were needed.

Tennessee topped the Hill-Toppers 31-23 as Peoples and Morrell scored nine and eight points respectively.

A field goal by Albert Peoples in the last thirty seconds of play won another close game over Sullivan in a fighting finish after Sullivan had led the game from the outset.

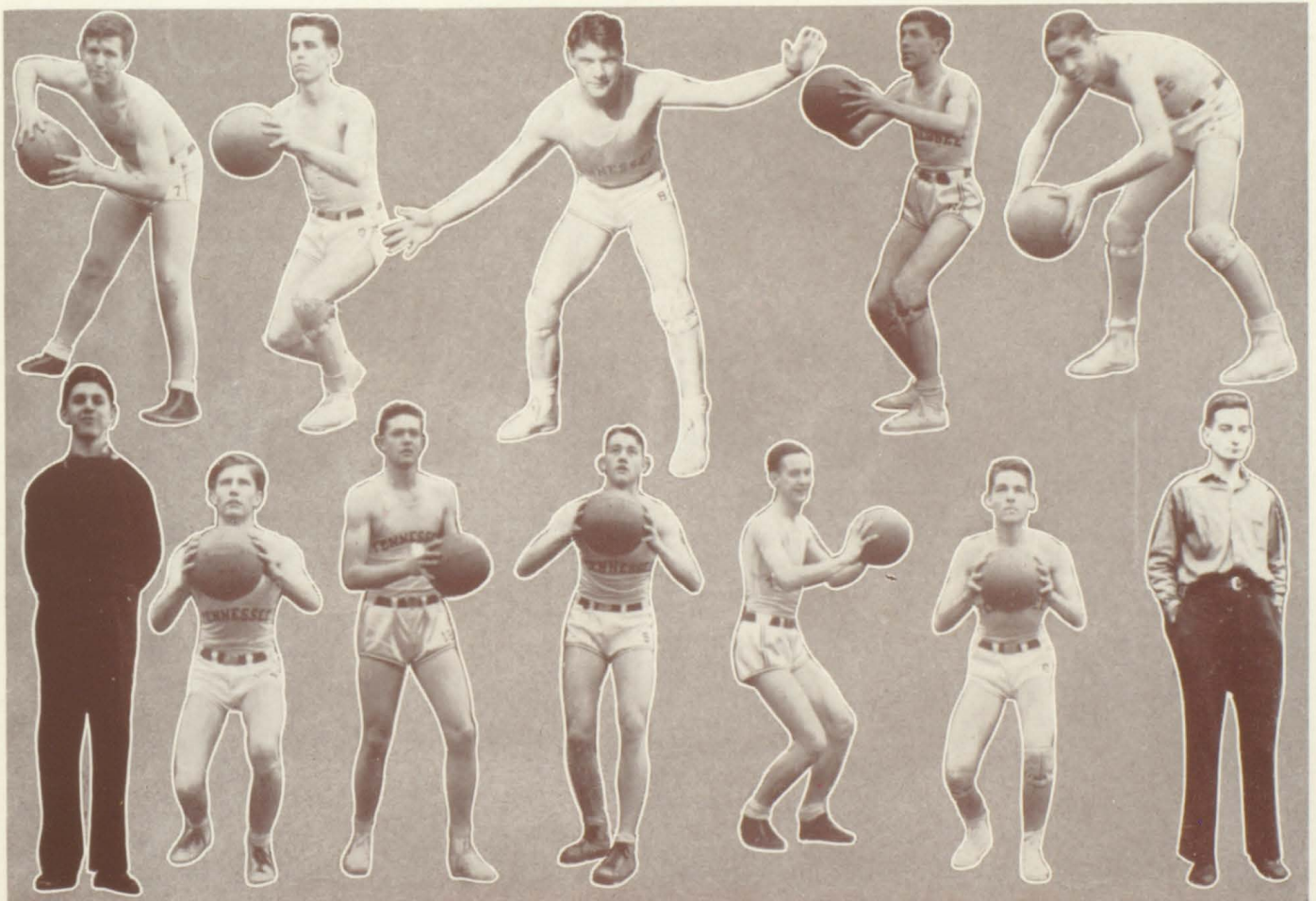
Vance, Peoples, and Frank Thomas, a tall, lanky substitute scored thirteen, twelve, and ten points respectively as Elizabethton fell before a 45-27 scoring rush by the Vikings.

Top Row

GUARD DON STICKLEY, FORWARD HARTSELL MORRELL, GUARD MORRIS COLLINS, FORWARD ALBERT PEOPLES, CENTER FRANK NIDIFFER

Bottom Row

MANAGER DAVID MCKEE, FORWARD FRANK TAYLOR, GUARD KARL SMITH, GUARD RICHARD SHINN, FORWARD FRED VANCE, MANAGER PRESTON O'DELL.





Left to Right
 CAPTAIN MORRELL
 FRANK THOMAS
 FRED VANCE
 FRANK NIDIFFER
 KARL SMITH
 FRANK TAYLOR
 ALBERT PEOPLES
 MORRIS COLLIN
 DON STICKLEY
 RICHARD SHINN



CHAMPION CITY VARSITY SQUAD

Taking their fourth Big Six game, the Vikings again won over Elizabethton, this time 50-36. Vance, Morrell, and Nidiffer led the scoring. It was beginning to look as if Tennessee would be in the thick of the Conference fight for the first time in many years.

In winning their ninth straight game the Vikings surprised a favored Chattanooga Central High team and won 31-13. Nidiffer featured in this game by holding the Chattanooga center almost scoreless and contributing several points to his own cause.

Tennessee was beaten by a well-balanced Erwin team 31-26 as we lost the first game in ten starts.

In a defensive battle with the Kingsport High Indians, Tennessee lost 25-20. The play of Collin and Vance, guards, was outstanding in this game.

Hitting their stride again after losing two straight games, the Vikings overwhelmed Virginia High 52-24 while Albert Peoples went on a spree, potting twenty-four points.

In proving that we did have a better team than Erwin the Vikings played smooth ball to come out ahead 39-31. Peoples and Morrell led the offensive, but Nidiffer, Collin, Vance, and Thomas all played splendid games.

In the first battle with a strong Morristown quintet, Tennessee won 39-26. Vance, Captain Morrell, and Albert Peoples set the pace in the point-making.

The 1939 City Championship went to Tennessee with a 45-24 win over Virginia as Thomas, Vance, and Morrell scored most of the points. The city series was won by the largest scores of any previous series.

Starting a three-day road trip the boys from B. T. H. S. conquered Morristown 40-31. Team play rather than any individual playing featured the victory.

In making up for their earlier defeat at the hands of the Vikings, Chattanooga Central beat them 32-25. The game was close throughout and a late rally failed to bring victory for the Vikings.

Tennessee High finished their roadwork by taking a hard fought 43-33 decision from Mosheim, Coach's "home town" team. The Vikings led all the way but pulled safely out in front only in the last quarter.

Kingsport again beat our team, this time by a 49-39 margin. After Vance fouled out in the third quarter no one was able to effectively hold Crawford and therein lay the story.

In their first encounter in the District Tournament Tennessee swamped Holston 63-34 with Thomas hitting seventeen points to set the pace.

With substitutes playing much of the game and accounting for themselves well, Tennessee won their second round of tournament play by beating Holston Valley 53-33. Smith led the scoring and Shinn, Taylor, Smythe and Stickley filled in well for the regulars. Thomas went out in the third quarter with a sprained ankle which dampened our hopes for further tournament conquests.

Kingsport eliminated Tennessee from the tournament by a 38-29 score. The Vikings took an early lead and were very much in the game all the way. Vance featured defensively by holding Crawford to one of his lowest scores of the year. Peoples led the scoring.

1939 BASKET-BALL SCHEDULE

Dec. 12.....	Tenn.	39	Blountville	16
Dec. 16.....	Tenn.	38	Johnson City	29
Dec. 23.....	Tenn.	20	Sullivan	18
Dec. 31.....	Tenn.	44	All-Staters	42
Jan. 6.....	Tenn.	31	Johnson City	23
Jan. 7.....	Tenn.	34	Sullivan	33
Jan. 13.....	Tenn.	45	Elizabethton	27
Jan. 14.....	Tenn.	50	Elizabethton	36
Jan. 21.....	Tenn.	31	Chattanooga	13
Jan. 27.....	Tenn.	26	Erwin	31
Feb. 3.....	Tenn.	20	Kingsport	25
Feb. 6.....	Tenn.	52	Virginia	24
Feb. 10.....	Tenn.	39	Erwin	31
Feb. 11.....	Tenn.	39	Morristown	26
Feb. 13.....	Tenn.	45	Virginia	24
Feb. 16.....	Tenn.	40	Morristown	31
Feb. 17.....	Tenn.	25	Chattanooga	32
Feb. 18.....	Tenn.	43	Mosheim	33
Feb. 24.....	Tenn.	39	Kingsport	49
March 7.....	Tenn.	63	Holston Institute	34
March 8.....	Tenn.	53	Holston Valley	33
March 10.....	Tenn.	29	Kingsport	38

«»

JUNIOR VARSITY SQUAD

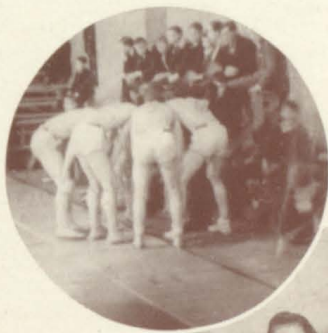
Standing

ED HAGY
JAMES ANDERSON
WIMPY GRAY
CARY GRAY

B. F. RUTHERFORD
SAM LEE
DAVE PARRISH
BILLY HAGY

Seated

JULES SMYTHE
MORRIS ROSS
ROY FAIDLEY
BILL SAYLES
BRUCE CAMPBELL
BASIL WYATT



VIKING TRACK

Although all prospects have not yet reported, the outlook for a winning track team is anything but bright. Bereft of practically all the members of a mediocre '38 team, the track coach starts the spring grind hoping for the best.

The major deficit will be the loss of the services of the wing-footed Bill Thomas, a one-man track team in himself. The burden of replacing this Mercurian will probably fall on the shoulders of Morris Collin, who is quite an all-round performer.

Other boys expected to contribute service to the 1939 team are Bill Sparger, Gilbert Kyle, and Herbert Davidson in the dashes; Freddy Vance and Bob Koontz in the high jump; and Hugh Barger and Don Stickley in the weights. The Vikings are entered in several dual engagements with Big Six teams before taking part in the Conference Meet at Johnson City later in the season.

The 1938 cinder artists defeated the Unicoi County High tracksters by a comfortable margin, finished second in the Tennessee-Erwin-Kingsport triangular meet, won a fifth place as a team in the East Tennessee track meet at Johnson City, and finished the season in the Big Six Track Meet at Municipal stadium.

VIKING GOLF

The golf team of 1938 first met and defeated Kingsport by the score of 15-3, or three of the four matches. On last April 17 we played Johnson City and won 11½-7½. A practice game with King College was next in order; the Viking golfers were fortunate in winning this unofficial game. Seventeen points was the overwhelming margin by which golfers Kenneth Messerole, Stanley McNew, and Bill and Henry Snodgrass defeated Elizabethton. May 12 witnessed a defeat for the Tennesseans at the hands of Morristown. On the thirteenth of May, William Snodgrass was low-scorer for B. T. H. S. at the state tournament held in Morristown.

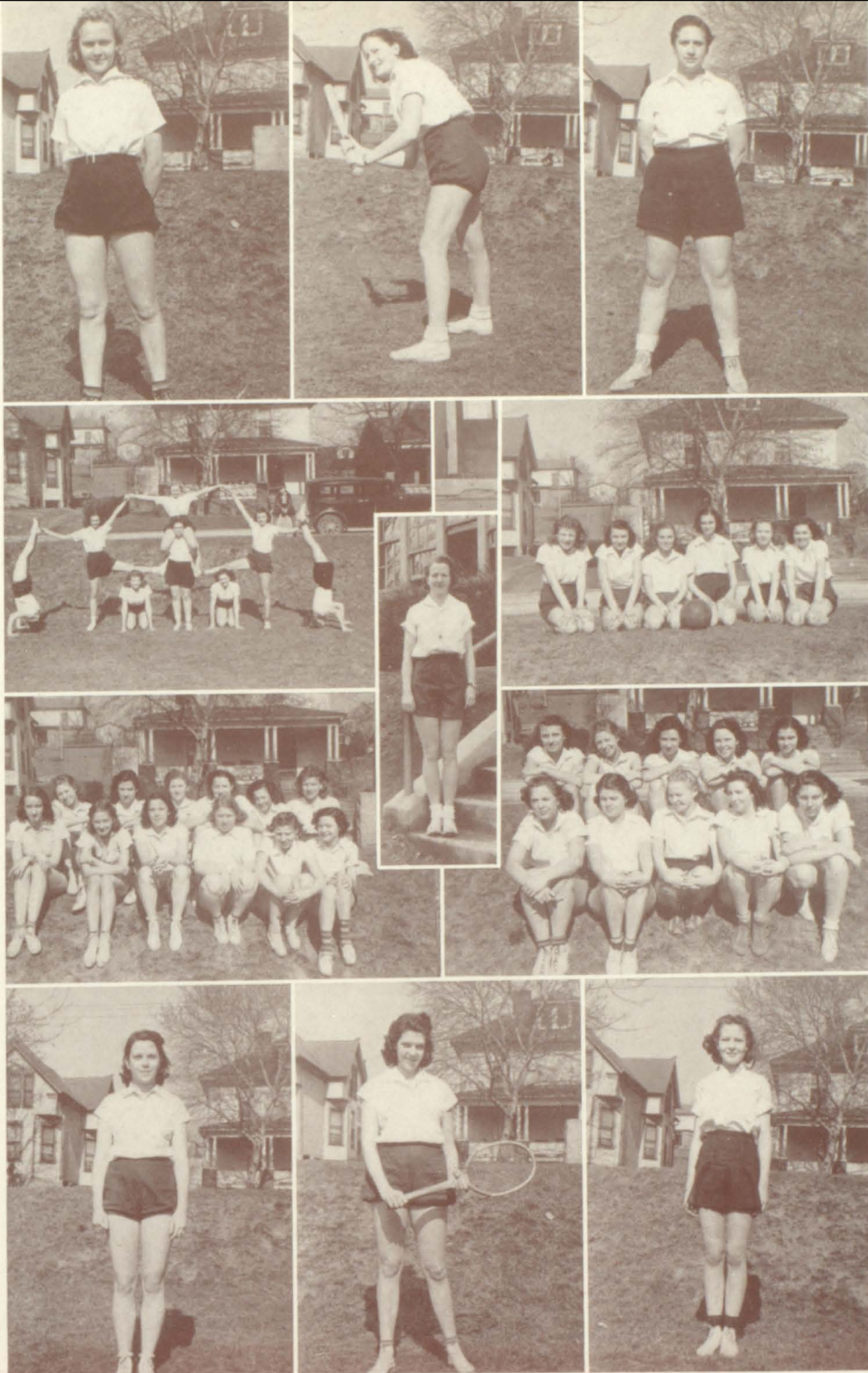
The graduation of number-one-man Kenneth Messerole and utility men Dub Hardin and Brandon Hagy leaves a gap in the 1939 green group. Bill Snodgrass and Stanley McNew must depend upon first year men for support in the present seasons.

VIKING TENNIS

Once again Tennessee High should step out with a formidable array of racqueteers. With two lettermen returning, the tennis team starts the season with only Jimmy Worley missing. However, his loss will be heavily felt, for he was one of the best netmen in this section.

Sammy Lee and "Dedie" Nidiffer are the two veterans, but they are sure to receive support from a coming crop, among whom are Freddie Vance, Billy Joe Lane, James Newton, Albert Peoples, Tom Morgan, and Buddy Thompson.

Work has already been started to get the courts in tip-top shape and they should be in that condition by the initial tennis match. Coach Esser has announced that a Big Six Schedule will be undertaken, and there is a possibility of tournament entrances.



INTRAMURALS

REBECCA LISANBY
Assistant Manager

PYRAMID

MOTTERN, LISANBY, VANCE, E. OWEN
FAULKNER, GODSEY, ZINT, W. OWEN

DORIS NEAL
Baseball Manager

WYMAN—Coach
SOCCER

JUNE GODSEY
Manager

BASKET-BALL

W. OWEN, FAULKNER, LILLEY
MOTTERN, E. OWEN, VANCE

2nd: M. SALLEY, PHIPPS, LYNCH, NEAL, CARRIER, W.
OWEN

1st: HOGSETT, L. SALLEY, ZINT, COMBS, BUCKLES,
FRANKLIN

JUANITA ZINT
Volley-ball Manager

NANCY JANE KING
Tennis Manager

EDNA OWEN
Soccer Manager

2nd: FAULKNER, M. SALLEY, PHIPPS, ZINT, MOTTERN

1st: MCCARY, THOMPSON, LISANBY, DUTTON, MCCLELLAN

VOLLEY-BALL

INTRAMURALS REVIEW

It is with deep regret that we see June, 1939, roll around to end the very last year of intramural athletics at this school building. Especially is this true of we who are being graduated, finishing our last year at dear old Tennessee.

Under the efficient direction of Coach Lucile Wyman, the program for girls' athletics has been successfully carried out. As usual, a manager and assistant manager were selected by popular vote of students to head a council to direct athletics. June Godsey was selected to act as the manager, and Rebecca Lisanby became the assistant manager.

Their first job was to assist Coach Wyman in selecting a suitable girl to head each sport. Their selections were: soccer, Edna Owen; volley-ball, Juanita Zint; basketball, Margaret McCary; tennis and ping pong, Nancy Jane King; baseball, Doris Neal; tumbling, Mary Ruth Vance; individual sports, Myra Netherland; Secretary of the Council, Mildred McCary. Then, they devised a system for T's to be awarded those who earn seven hundred points. Points are given for class teams and for individual sports.

Kickball became the center of attention as the year began. But that's an easy game, so we tried something harder—soccer; and if you know very much about that game you can imagine what happened when such athletes as Phipps, Salley, little Furge, Neal, and others started playing. Fortunately, no one was seriously injured in classes, so a tournament was held with enough girls reporting to compose three teams. These were captained by Neal, King, and Caldwell. Under the supervision of Edna Owen, the games were played on Elmore Field. Everyone made the best of those games, for the construction of the new grammar school building has taken our playing field. In the course of several thrilling games, Neal's team won the championship.

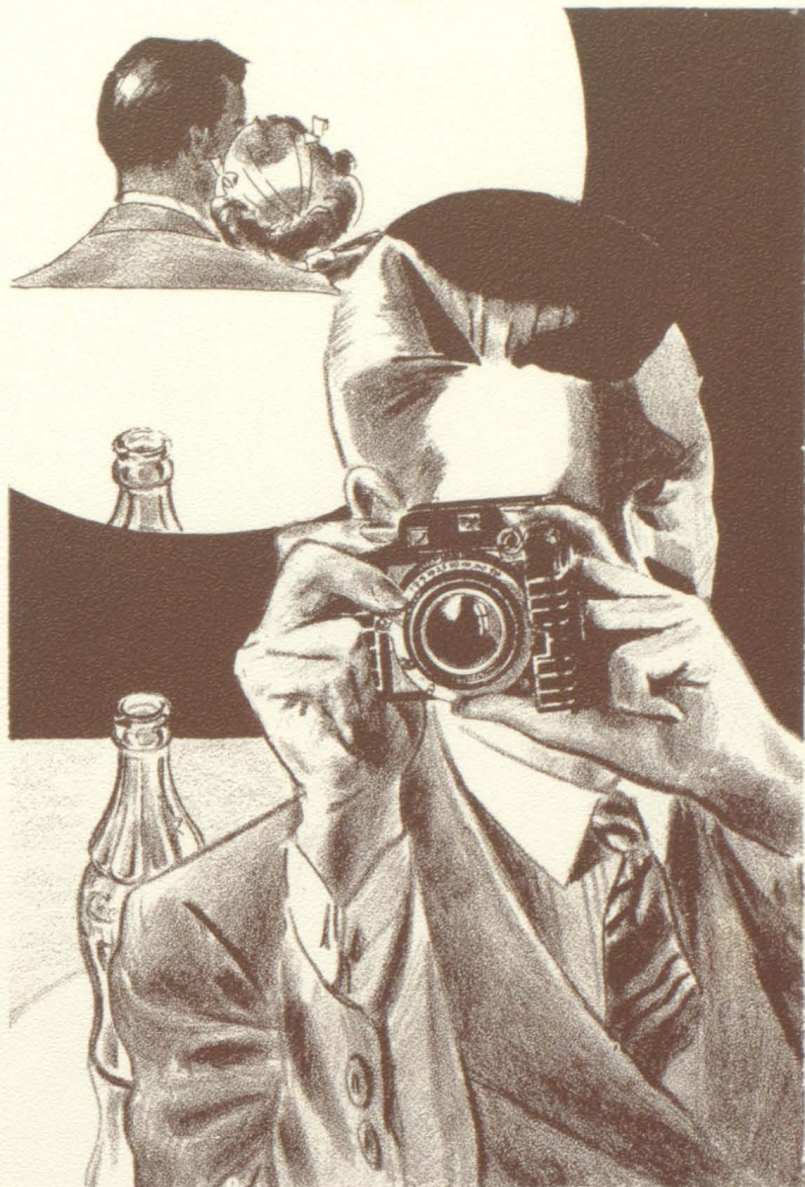
Regretfully, we came inside for a session in volley-ball. A class tournament, directed by Juanita Zint, was started, but it remains unfinished to date. The Sophomore class was ahead at the close of the season with no losses.

This year Coach Wyman tried something new in Tennessee High intramural basketball. A practice was held in the school gymnasium, and the girls were divided into four teams which were as evenly matched as they possibly could be. Of course, the games were not as hotly contested as the class teams would have been, but the scores were undoubtedly closer due to the evenly matched teams. The four teams and membership were as follows: Black Annies, who selected Frances Quillen, forward, for captain; Volunteers, with young Myra Netherland, guard, captain; Jumpers, captained by a forward, Juanita Zint; and the Ferdinands, captained by a sensational guard, Carmen Lilley. Two games were played each week, and Lilley's team outclassed all rivals to become the champions, with five wins, no losses, and but one tie. The tie came at the hands of Zint's Jumpers, but in a later game between the two teams, Lilley proved too strong for the Jumpers, winning by a score of 27-18.

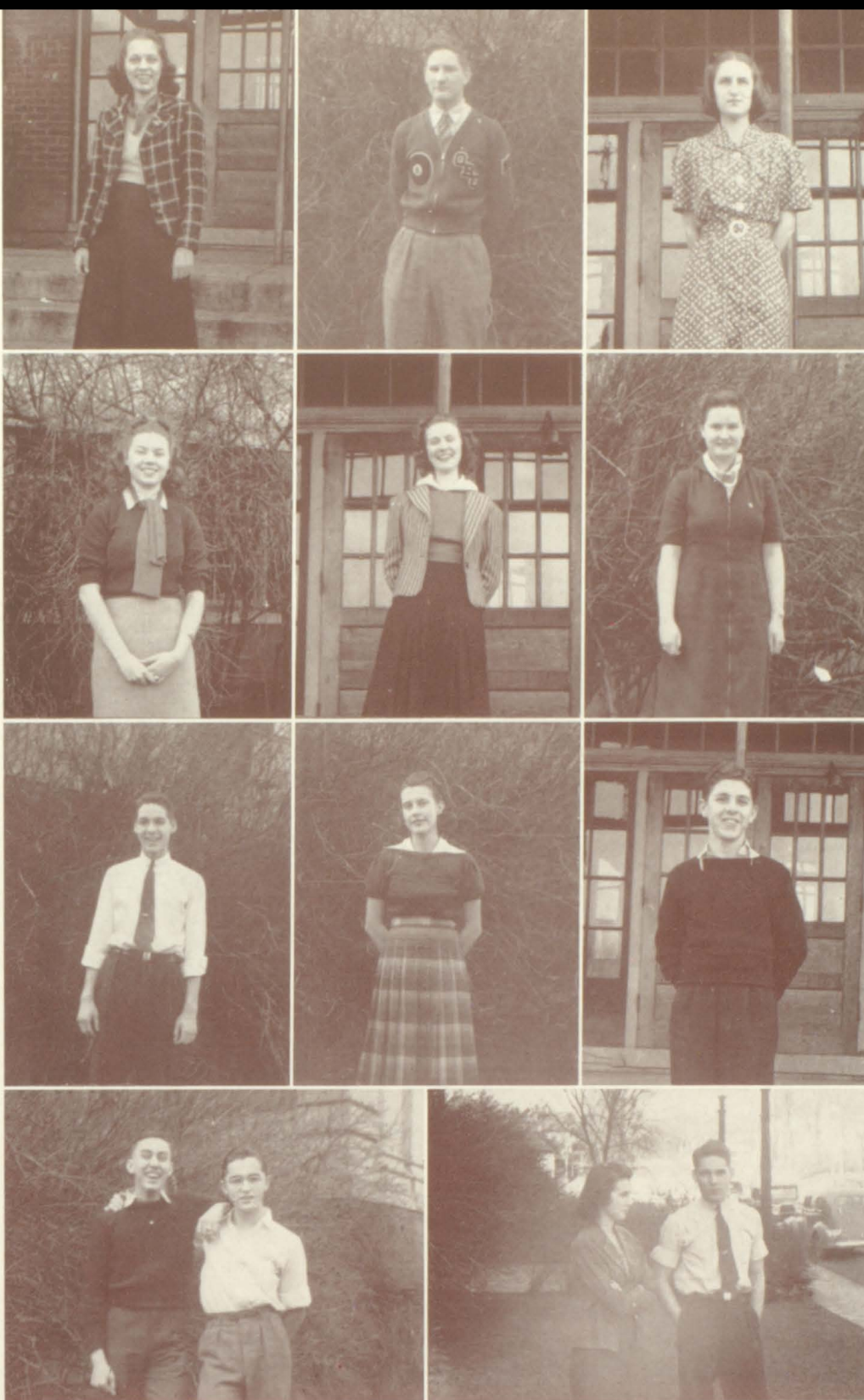
Final standings of the teams were, in order: Lilley, Quillen, Zint, and Netherland. The championship team traveled to Virginia Intermont College and played a fast college sextet, and were downed by a margin of eighteen points. Edna Owen was high scorer in the school with sixty-four points, made in five games, and June Godsey had the second highest number of points.

All this behind us, we started playing baseball and tennis. A baseball tournament was held under the direction of Manager Doris Neal, and those who wished to, entered the tennis tournament under the direction of Nancy Jane King.

Another year has ended very successfully, and we hope future years will be just as successful.



Features



SENIOR SUPERLATIVES

ELLEN ROLLINS
Wittiest

SARAH EPPERSON
Cutest Girl

FRED VANCE
Best All-round Boy
Most Polite

CRAIG CALDWELL
JACK COWAN
Most Energetic

RIDDICK McANGE
Best-Dressed Boy

ELIZABETH FLEMING
Best-Dressed Girl

DOROTHY MCGHEE
Loudest

LOIS CALHOUN
Best Student

ADELAIDE MAHONEY
Most School Spirited
Best All-round Girl

DAVID McKEE
Laziest

FRED VANCE
CAROLYN COWAN
Cutest Couple





DID YOU KNOW THAT . . .

While in grammar school Fred Vance had a perfect attendance record, being neither absent nor tardy. . . . The new high school auditorium will have the largest seating capacity in Bristol. . . . One of the B. T. H. S. professors has a weakness for dimples. . . . Kathryn Hill will work for Paul Hesse, the famous commercial artist, in New York this summer. . . . At least six Senior girls have a desperate "crush" on Hartsell Morrell. They call him "Fascination." . . . Fred Everett has a twin brother in the Navy. . . . Jack and Bill Faucette are identical twins, the only difference being ONE of them has a mole behind his ear. . . . Cary Gray's only ambition is to follow in the footsteps of Coach Esser. . . . Miss Fortune has a witty personality. . . . Mr. Dove went to college with John Howard, the famous movie actor. . . . Dotty Rutherford dates on the average of six nights each week. . . . Helen Frances Stover has the longest eye lashes of anyone in school. . . . Ellen Rollins is an expert bridge player. . . . Billy Hagy's secret passion is Martha Post. . . . Miss Smith is the proud owner of twenty kittens and cats. . . . Melvin Dishner is handy with the guitar and can give a melodious impersonation of Gene Autry. . . . Winfield Stickley prefers to be called "Scotty." . . . Mary Dixie Greer is engaged to an Emory student. . . . Elizabeth Moore spends part of every summer in Nova Scotia. . . . Erskine Parks is owner of a regulation pool table, which occupies half of his bed room. . . . Delilah Lowe and Vivian Carrier have been going together for nine years. . . . Julian Sisler has been dubbed "Mr. Esquire" because of the clothes he wears. . . . Mary Betty Huff and Robert Shoaf have been determined one of the school's most devoted couples. . . . Rosina Rainero went to Italy when she was eleven. . . . Dewey King is the author of a play. . . . Frank DeFriece once built a miniature automobile. . . . Wade Foster is the tallest and Ellen Jane Martin the shortest in the Senior class. . . . Margaret Anderson is a talented writer of poetry. . . . Herbie Peters is the Drum Major of the Drum and Bugle Corps. . . . Billy Birdwell is the school's orchestra leader. . . . Frances Quillen is taking an art correspondence course. . . . David Massengill is a heart breaker—and at his age. . . . Sam Lee is going to be a second Don Budge. . . . Rex Newman's brother designed the interior of the State Theater. . . . Roy Webb has finger nails half an inch long. . . . Mrs. Cowan's hobby is entering contests. . . . Jack Cowan did all the art work in the annual this and last year. . . . There are sixty-seven girls in the Senior class. . . . Dorothy McGhee goes home between classes. . . . Mr. Gillingham is fond of all day suckers. . . . Julia Braddock is a blues singer. . . . Hunter Johnston has the most original hair styles. . . . Three or four of the Senior girls had a perfect attendance record at all football and basket-ball games. . . . Florence Lane has the cutest dimples in school. . . . Emily Caldwell never uses make-up. . . . George Legg is the second Fred Astaire. . . . Sam Beard has the best speaking voice of any student. . . . Graig Caldwell can ski. . . . O. D. Hamrick wears the loudest shirts in school. . . . Bernard Peters has the bluest eyes of anyone in school. . . . Mr. Eggers has twin daughters. . . . Albert and Oran Peoples are twins. . . . ????

FIFTY YEARS OLD

yet **YOUNG** in Ideas

If "life begins at 40," we've a ten-year jump on life . . . and for those young folks who want things "young", we've the liveliest fashions for young life. For though we've served four generations and have attained our Golden Anniversary, we are entirely in tune with the lives and needs of the younger folk . . . and our stocks are filled with fashions expressly for them.

THE H. P. KING CO.

CALENDAR

Sept. 12—School starts off with a bang! Tho' we afterwards regretted the bang . . . ?!?

Sept. 13—We had more fun in classes today. We didn't have any lessons.

Sept. 14—The Subs are getting smaller and wetter every year.

Sept. 15—Walloped Newport 33-0. Everyone wonders why Mr. Burleson sat on a towel. Was it the weather, his new suit, or is he just pessimistic?

Sept. 16—Bored already.

Sept. 19—"Small Fry" Whitaker appeared in "britches" up under his armholes. The tops—we mean!!!

Sept. 20—Oh! How we hate to get up in the morning!

Sept. 21—Two "Sig" shirts appeared. Don't your names look good in sewing?

Sept. 22—Maroon and White statistics taken. Don't stuff the ballot box, my friends.

Sept. 24—Marthina tried to "set-up" the team to hot dogs at the Erwin game. Don't it awful?

Sept. 26—Harriet Hammer elected president of the Girls' Hi-Y.

Sept. 27—Aren't you glad you live in America?

Sept. 28—The Vandal Club ruined a poster.

Sept. 29—Mrs. Ferguson had a radio in her room. We all enjoyed the newscasts, AND the music!!

Sept. 30—We beat Jonesboro 46-0!—and the band played Alexander's Ragtime Band.

Oct. 3—Everyone welcomed Mrs. Marney back today.

Compliments of

H. J. HILL

EDGEMONT SERVICE STATION

SULLINS COLLEGE

Is fully accredited and offers a SCHOLARSHIP to every girl who graduates in the Bristol Schools.

The advantages in Music, Art, Expression, Dramatics, Home Economics and Secretarial Course are in keeping with the high literary standards. Confer with us at Sullins College for information in reference to any courses desired.

W. E. MARTIN, President.

CALENDAR

Oct. 4—Tin pans and hot water bottles seem to be the latest thing in headgear. Aren't these Hi-Y initiations gruesome!?!?

Oct. 5—Wanna buy an annual?

Oct. 6—Fred Everett elected President of the Senior Class.

Oct. 7—We were given a peppy pep meeting today. All the girls were yelling for "Whiskey"—McKee.

Oct. 8—The Vikings sailed over Johnson City for the first time in six years with a score of 33-6.

Oct. 10—Fred Vance got to school on time.

Oct. 12—Mr. Mooney paraded through Dramatics Club meeting with his wife and daughter. We think they're pretty, too, Professor.

Oct. 14—A Thanksgiving poster adorns our wall—and Hallowe'en isn't yet?!

Oct. 15—The football game at Greeneville turned into a free-for-all wrestling match. So that's why so many members of the faculty kept their hands in their pockets.

Oct. 16—Tennessee High tramped over Greeneville with a score of 12-6. Greeneville tramped over Tennessee High with Coca-Cola bottles and flying fists.

Oct. 17—The school buzzed with the beautiful picture of Kathryn Hill that appeared on several leading magazine covers.

Oct. 18—The Glee Club had charge of the chapel program. The Rev. George West was the guest-speaker.

Oct. 19—All the teachers gave six weeks tests on the same day.

Speedometer Service and Repairs
Stromberg-Carlson Radios
Columbia and Sterling Bicycles

E. H. Hammer & Co., Bristol, Tenn.

LIVE AND LET LIVE SHOE SHOP

406 STATE STREET

BRISTOL, TENN.

Compliments of

United
FURNITURE STORES, INC.

Compliments of

RUTHERFORD FREIGHT LINES,
Inc.

BRISTOL, TENN.

KING COLLEGE

(RIGHT HERE IN BRISTOL)

Offers you—

- A standard four-year Liberal Arts Course leading to the A. B. Degree.
- Approved pre-professional courses.
- Courses in Business Administration including shorthand and typewriting.
- A program of extra-curricular activities including athletics, music, the press and religious services.
- A loyal group of alumni from Tennessee High and King for continuing fellowship.
- And all at a price you can easily afford.

PLAN TO JOIN YOUR FRIENDS AT KING COLLEGE

CALENDAR

Oct. 20—The bell broke today. Who did they think they were calling—cows??

Oct. 21—The Allens and Dr. Thompson entertained us lavishly in our SECOND chapel program of the week.

Oct. 24—The operetta, **Stephen Foster**, was a great success.

Oct. 25—Adelaide Mahoney typed all period and didn't even get ONE perfect copy.

Oct. 26—The Fogarty-Burleson feud started off with a bang!!!

Oct. 27—The Juniors had charge of the chapel program and Alumnus Earnest Ford led the singing.

Oct. 28—No school on account of the teachers went to Knoxville.

Nov. 4—Maybe we were scalped by the Indians at Kingsport but we certainly held them in the chapel program.

Nov. 7—The Seniors went over the top first in the Red Cross Drive.

Nov. 9—We wonder why Fred Vance, David McKee and "Dedi" Nidiffer didn't go home for lunch today. Esquire certainly must be an interesting magazine.

Nov. 10—Seniors started magazine-selling drive.

Nov. 11—Water Boy Hagy stole the show at the Morris-town game when he stumbled across the field and broke the bottles.

Nov. 14—Who was it that had the music-box in fourth study hall? I always did like **A Tavern in the Town**.

Compliments of

INTERSTATE BODY WORKS

1116 W. STATE ST. BRISTOL, TENN.

Compliments of

W. T. GRANT CO.

644 STATE ST. BRISTOL, TENN.

Compliments of

Watt's Bakery

Bakers of

Jumbo Bread

and

Parker House Rolls

Compliments of

Bristol Drug Corporation

633 STATE ST.

DRUGS, PRESCRIPTIONS, SODA

Won't You

Hav-a-Tampa

The Largest Selling Cigar in the South

COWAN BROS.

Compliments of

R. J. HICKS

GROCERIES

"HICKS TURN"

Compliments of

STONE LUMBER COMPANY

CALENDAR

Nov. 15—The Girls' Hi-Y took in some new members. Now we can see how eleven more girls look without their warpaint!?!?

Nov. 16—The school blossomed out in maroon and white. Come on, team, beat Virginia High!

Nov. 17—I wonder how Judy Smith manages to sit down with those coathangers on her cincture.

Nov. 18—We peeled the Orange 48-7!!!! That was a grand game to be our last one, eh, Seniors?

Nov. 21—What's all this about "calling at Locker No. 70"?

Nov. 22—Did you see Helen Moore's little twin cousins? My, aren't they cute?

Nov. 23—We had a very inspiring chapel program. Thanksgiving was the theme.

Nov. 24—Whoopee! No school on account of it's Thanksgiving!

Nov. 28—I wonder where all these pictures from Esquire are coming from?

Nov. 29—Adelaide, my honey, you were almost late today. You'd better get up a little earlier.

Nov. 30—A diary is pretty hard to keep. I think I'll take a rest for today.

Dec. 1—Only twenty more shopping days 'til Christmas.

Dec. 2—The annual Football banquet was held, and a good time was had by all.

Dec. 5—Our basket-ball season got off to a fine start when Tennessee beat Blountville 39-16. Nice going boys!!

Ralph English Confectionery

RALPH'S

"Home Made Ice Cream"

Compliments of

S. H. KRESS CO.

5-10-25c Store

The firms purchasing advertising space on these pages have materially aided in the production of this year book. Tennessee High students may express their appreciation by patronizing these advertisers.

For Graduation

The Exchange of Photographs Keeps the Memories,
Binds the Friendships of Happy School Days

HUTCHESON STUDIO

Photographs of Distinction

Stay in the Low Price Field—but

Step up to the V-8 Class

STATES MOTOR COMPANY

CALENDAR

Dec. 7—The Girls' Hi-Y gave a happy Christmas to many under-privileged children at the Friendship House.

Dec. 9—Convention **Go Hang**, the Junior class play, was a hit. And the dance following the play at Hotel Bristol was a knockout!

Dec. 14—I thought the war was in China! Or was that just some scholar celebrating with fireworks!?!

Dec. 15—Seems like a "home-coming" with so many alumni home from school for the holidays visiting their Alma Mater.

Dec. 16—The Girls' Hi-Y presented its annual Christmas assembly program with Dr. J. E. Hicks as guest speaker.

Jan. 2—How we dreaded having to come back to school after the glorious holidays.

Jan. 3—Half the students slept thru their classes. But there was an early dismissal in order that we could hear the bowl game broadcasts.

Jan. 6—The Senior Class had charge of chapel. The V. I. girls entertained us with various readings. One girl really brought down the house.

Jan. 7—Half of Tennessee High went to see **Dracula** and **Frankenstein** at the Columbia Theater. The Boys' Hi-Y was there in full attendance.

Jan. 10—Vivian was absent—and did Delilah look lonesome!

Jan. 11—Mr. Dove surely has ONE terrible job—keeping the halls quiet sixth period. Your faithful female followers just won't leave you alone, will they, Mr. Dove?

SEVIER'S LAUNDRY

39 Years of Laundry Leadership

Make Our Store Your

Gift Headquarters

McCHESNEY AND LESTER

Jewelers and Optometrists



BRISTOL, VA., and ABINGDON, VA.

W. I. BOLLING MOTOR CO.

GENERAL REPAIRING

210 MOORE ST.

IGNITION

PHONE 316

ELECTRICAL WORK

BRISTOL, VA.

THINK IT OVER

Your best investment next to Education is your Personal Appearance.

We can help you with the latter.

BLAKELY-MITCHELL COMPANY

MOORE-EARHART COMPANY

Athletic Equipment and Luggage

647 STATE STREET

Outfitters of School and College Teams

BRISTOL, VA.

CALENDAR

Jan. 12—There's nothing like term reports for hard work—and do they keep us busy!!!

Jan. 13—Gee, Friday the thirteenth! The French Club gave a play and the curtain stole the show!

Jan. 30—Everyone came to get his report card. Also, Tennessee High was defeated in basket-ball for the first time this year.

Jan. 31—There are 825 pupils attending Tenn. High and the school was built for 500.

Feb. 1—They had to hold off the bell in second lunch period today. There was such a hungry mob that they couldn't get thru the line.

Feb. 3—Does everyone know who Mr. Yenreb Noselrub is?

Feb. 6—Oh-Gee! Is EVERYone bloated? That seems to be all you hear these days—especially from Bobby Havens and Morris Ross.

Feb. 7—No Cadmus Club—Oh Boy!

Feb. 8—Dramatics Club elected officers today. Since Bernard Peters has been elected president, a lot of new girls have joined.

Feb. 9—"Dedi" Nidiffer got it for president of the Student Body.

Feb. 10—Tenn. High beat Erwin 39-31. Boy, that really was some game.

Feb. 13—The new Student Body officers were installed and we had a fire drill while in the auditorium.

Compliments of

BALL BROTHERS, Inc.

SINCE 1905

EASY TERMS

506-510 STATE STREET

BRISTOL, TENN.-VA.

Oldest Furniture Store
in Bristol

Compliments of

W O P I

"The Voice of the Appalachians"

On Daily 6:00 A. M. to 10:00 P. M.

Our Programs

Are

CONSTRUCTIVE

EDUCATIONAL

and

ENTERTAINING

"Learn It Right"
Bristol Commercial College
BRISTOL, TENN.

Compliments of
Southern Maid Dairies, Inc.

Compliments of
Boston Shoe and Repair Shop

MITCHELL-POWERS
Since 1880

McCROSKY'S
713 STATE STREET
BRISTOL, VIRGINIA

Compliments of
BRISTOL CANDY CO.

CALENDAR

Feb. 14—Valentine's Day and Vivian and Delilah were ringing wedding bells in first Study Hall. (Or was it REALLY just a charm bracelet?)

Feb. 16—The basket-ball team left for its three-day trip. They beat Morristown, first. Who's next, I wonder?

Feb. 17—Wasn't it lonesome today with everybody gone to Chattanooga. I bet there's a hot time in THAT town tonight!!!!!!

Feb. 20—The Seniors and Juniors had to take achievement tests today. Personally, I think they're more like endurance tests!

Feb. 21—The president of our student body came down with the "flu." We surely did miss you, "Dedi."

Feb. 22—Adelaide was so anxious to see that the **Ma-roon and White** got out that she came to school with a curler in her hair!

Feb. 27—"School Spirit" Drive starts today!

Mar. 1—March blustered in like a little lamb.

Mar. 6—Why do we have to have Mondays? And since we do, why do they have to be blue? There's something so depressing about having another whole school week ahead of you.

Mar. 8—This is the week set aside for six weeks tests. You should see the people studying!

Mar. 9—Who started this yen for pointless jokes, any-hoo?

Mar. 10—The Junior Class had charge of the chapel program and they put on a musical one. Evan Roberts surely did make a hit with the audience.

PARAMOUNT THEATRE

"Bristol's Showplace"

STATE THEATRE

"Bristol's Family Theatre"

D. B. RYLAND CO.

JEWELERS

GIFT SHOP

WATCHES

HAMILTON — ELGIN — LONGINES
BULOVA and GRUEN

DIAMONDS

REPAIRS

"A Gift from Ryland's Means
More"

KELLY AND GREEN

514 CUMBERLAND ST.

Offer You

The World's Finest Snapshots

Insist Upon

"Silverglo" Process Dated
Snapshots

Compliments of
PIEDMONT SERVICE STATION

CAMEO AND COLUMBIA THEATRES

We wish for you success and happiness through the years to come.

MODERN METHODS OF CORRECT LIGHTING
FURROW ELECTRIC CO., Inc.

Fixtures

408 STATE ST., BRISTOL

"Everything Electrical"

Appliances

PHONE 162

CALENDAR

blossom on our noses!!!!

Mar. 15—Receiving report cards today sent many a studious one to sixth study hall.

Mar. 16—Well, the practice for the operetta is getting under way. Dot McGhee has the lead and the name of it is **The Willow Plate**.

Mar. 17—Blimey! It's the good St. Patrick's Day. And Virginia High put on a perfectly splendid chapel program for us.

Mar. 20—The tryouts for the Senior play are beginning today. Here's to you, my friends.

Mar. 21—The first day of spring!! The Tennessee High scholars are showing signs of spring fever already.

Mar. 13—Blue Mondays seem to stand out like a rum

Mar. 22—Hand bills are being given out everyday to further the school spirit drive. Jack Cowan has been doing the drawing. You know, he's a wonderful thing. Some day we can say we knew him when!

Mar. 23—The Dramatics Club finally had their play, after a postponement of about three weeks. Erskine Parks got sick and couldn't fulfill his part of "Pa", but the cast continued bravely on.

Mar. 24—Spring football practice is going on full swing and all of the boys are walking at angles. What those boys go through so that they can be football heroes!!

Mar. 27—How in this world do those students manage to manufacture such horrible odors in Chemistry class? If THAT'S Chemistry, I'll take PHYSICS, any day!

Compliments of

H. D. Connelly Esso Station

Compliments of

BASSETT'S DAIRY PRODUCTS

Compliments of
McCLURE MOTORS

Chevrolet

Cadillac

La Salle

Compliments of
Bristol Steel and Iron Works, Inc.

"SAY IT WITH FLOWERS"
SMITH FLORAL COMPANY
PHONE 523 BRISTOL, TENN.

We Sell Wayfarer Shoes for the
Entire Family
Bristol Home Trade Store

Compliments of
PIGGLY-WIGGLY

Buy HECHT'S!
Fine Bread and Cakes

Visit Our Modern Fountain
and Luncheonette
ROSES 5-10-25c Stores

CALENDAR

Mar. 28—Well, it seems that Miss Sterett, Mrs. Caldwell and Mr. Burluson don't know what a "hemi-demi-semi-quaver" is. It's a one-sixty-fourth note, in case you're interested.

Mar. 29—My, how we do have to work to get this annual off to press.

Mar. 30—I always like Thursday because the next day is Friday and that means no more school until Monday—!

Mar. 31—Well, tomorrow's April Fool's Day. Aren't we all?

Apr. 3—Seniors, as you read this calendar, don't you wish you were back in April and still had another month or two of school? It makes me want to weep!

Apr. 4—I wonder if they will ever have dances at this school? More power for a good cause to those that are left.

Apr. 5—School surely is a good place to fall in love. And then Spring only goes to help the cause along.

Apr. 6—Did you hear the one about the man who had his leg off and lost his understanding?

Apr. 7—Sixth period conferences in the auditorium are becoming quite the fad.

Apr. 8—Jimmy Wilson came to school today with his hair full of bubbles. He thought some shampoo was hair tonic, but it didn't turn out that way!

Apr. 12—There's nothing like April showers to keep a person in the dumps! Oh! How I hate rain!

BRISTOL OFFICE SUPPLY COMPANY, Inc.

Office Supplies and Equipment

All Makes of Typewriters Rebuilt, Overhauled and Repaired
MOORE STREET, BRISTOL, VIRGINIA PHONE 200

Compliments of
GIBSON CANDY CO., Inc.
Confectioners
BRISTOL, VA.-TENN.

Eye Examinations
DR. J. L. McCORD
Optometrist
526 STATE ST. BRISTOL, TENN.
PHONE 5

Compliments of
FAUCETTE COMPANY

Compliments of
COWAN-GRANT CO.

Compliments of
J. B. DENTON and H. H. WORRELL
GROCERIES AND MEATS

19 COMMONWEALTH

PHONE 5115

Compliments of
S. E. MASSENGILL CO.

CALENDAR

Apr. 13—Eleanor Roberts and Donald DeVault are STILL going strong. They're a remarkable couple, don't you think?

Apr. 14—That was a nice chapel program we had today. There's still a vacant space in the midst of the Senior section, though.

Apr. 17—Morris Collins and Martha Jean Hulsey make an awfully cute couple, don't you think?

Apr. 18—It's one of the most depressing things in the world to see our last days at old B. T. H. S. go fleeting by. Would that we could turn back the clock.

Apr. 19—How can anyone expect us to study on beautiful days like these?

Apr. 20—The Senior cards have returned from the printer's and there is quite a to-do with all the Seniors exchanging them and such.

Apr. 21—The new school is coming on in a big way. That certainly is going to be one beautiful building.

The Smart, Well-Dressed Man Is Outfitted
by

ReMINE-GOBBLE, Inc.
PARAMOUNT BLDG.

MINOR'S DRUG STORE

PHONE 24

Home-Made Ice Cream

Our Motto: "Always the Best"
BRISTOL FLORAL COMPANY

534 STATE ST.

BRISTOL

VIRGINIA INTERMONT

AN ENDOWED JUNIOR COLLEGE

Accredited by the Southern Association of Colleges and all other agencies that accredit junior colleges, including the University of the State of New York.

Standard Courses:

1. Classical two-year courses admitting to Junior Year in Senior Colleges and Universities.
2. General Cultural Courses (largely elective) for those not planning to spend more than the two years in college.
3. Home Economics.
4. Business and Secretarial Courses.
5. Art. Fine and Applied Art including Costume Design, Interior Decoration and China Painting.
6. Speech and Dramatic Art.
7. Physical Education.
8. Music: Piano, Organ, Voice, Violin, Theory.
9. High School.

Sports for every student: Archery, basket-ball, field ball, gymnastics, hockey, horseback riding, riflery, swimming, squash racquets, tennis, track, tumbling, volley-ball.

For catalogue and full information apply to

H. G. NOFFSINGER, President,
VIRGINIA INTERMONT COLLEGE,
Bristol, Virginia.

BUNTING'S DRUG STORE

Candies

Soda

Kodaks

Films

And

Finishing

ANNUAL
Craftsmen

Unusual Year-books

THE BUILDING OF A SUPERIOR YEAR-BOOK REQUIRES THE CLOSEST COOPERATION ON THE PART OF THE STAFF, THE PHOTOGRAPHER, THE ENGRAVER AND THE PRINTER. OUR CONNECTIONS AND YEARS OF EXPERIENCE ENABLE US TO RENDER A COMPLETE SERVICE. IF YOU WANT TO PRODUCE AN OUTSTANDING YEAR-BOOK, LET US HELP YOU. OUR EXPERT SERVICE WILL MINIMIZE MANY OF YOUR PUBLICATION PROBLEMS . .

THE KING PRINTING COMPANY

Printers « Engravers » Bookbinders

B R I S T O L , T E N N E S S E E

Autographs

Autographs

