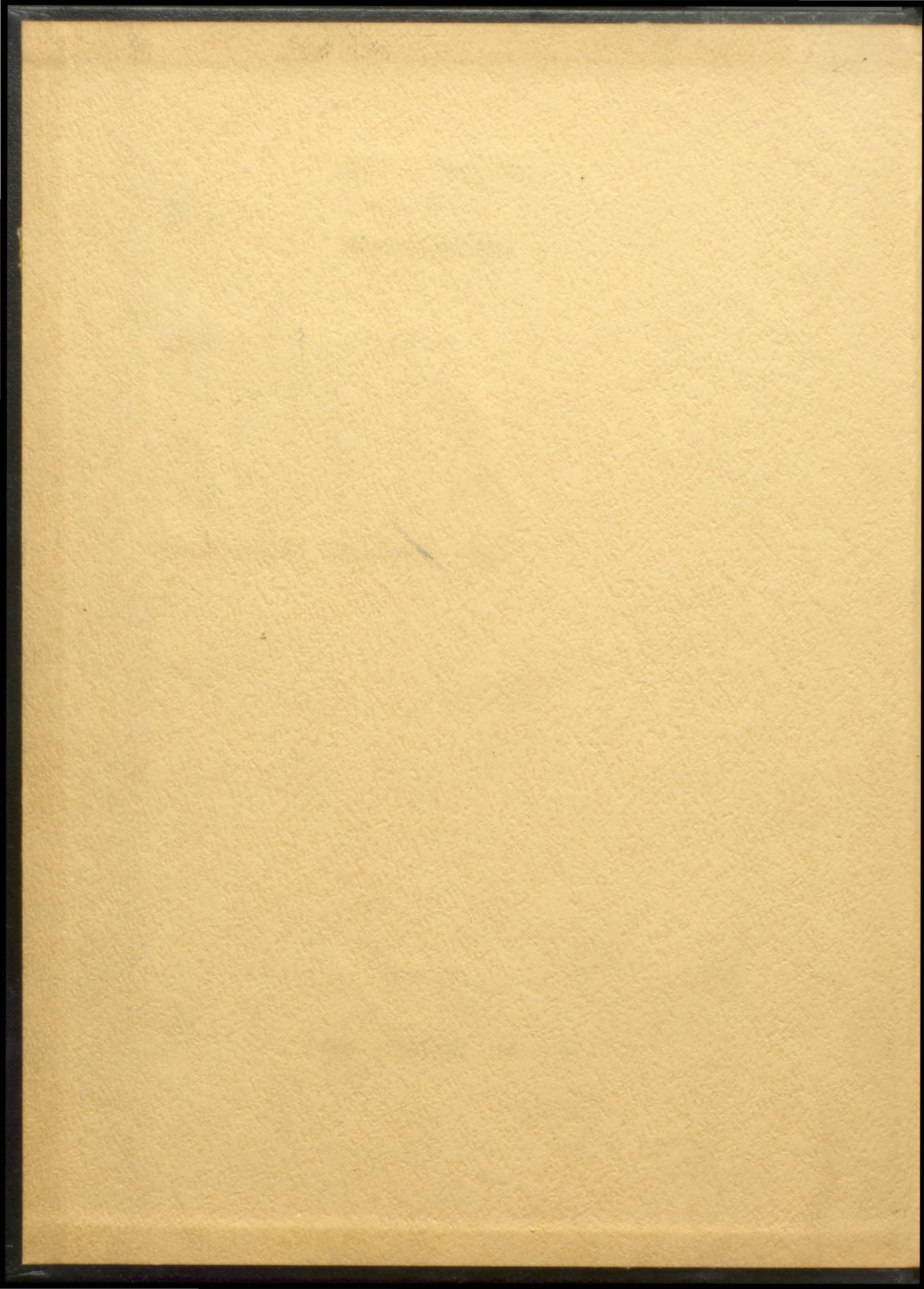


THE

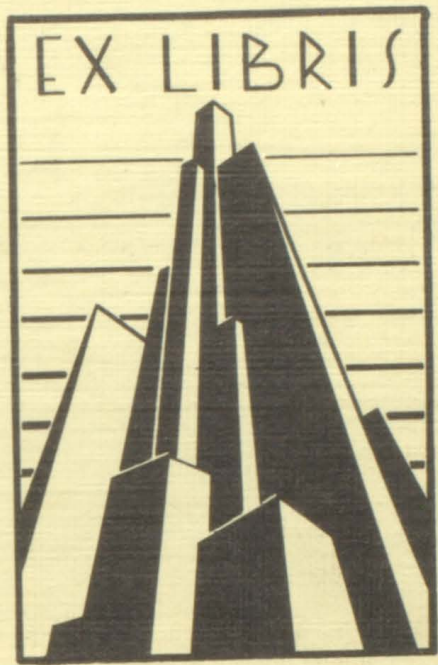
ADME

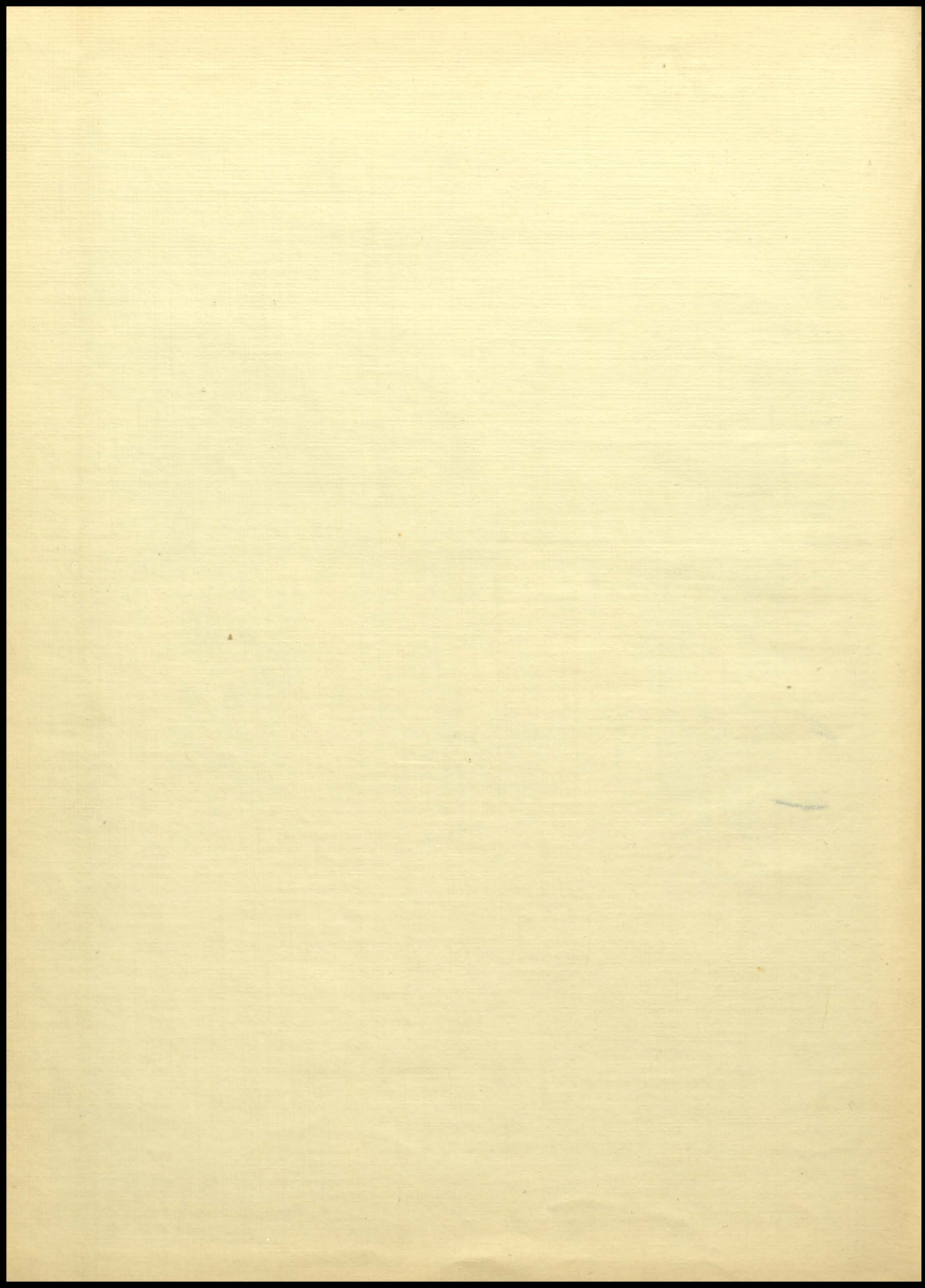
1934













THE

ADVICE

1934





CONTENTS

Dedication . . . . .	5
Officers of Administration . . . . .	6
Faculty . . . . .	7
Cadmus Club . . . . .	8
Senior Section . . . . .	9
Officers and Poem . . . . .	10
Seniors . . . . .	11
Class History . . . . .	21
Last Will and Testament . . . . .	23
Class of Thirty-Four . . . . .	25
Features . . . . .	27
Classes . . . . .	33
Athletics . . . . .	41
Clubs . . . . .	51
Autographs . . . . .	70





THE CADMEA OF 1934 IS DEDICATED  
TO ONE  
WHOSE GUIDANCE HAS DEMONSTRATED HER WISDOM  
WHOSE PATIENCE HAS ENGENDERED HOPE  
WHOSE LOYALTY BESPEAKS HER  
DEVOTION  
MRS. GENEVIEVE RICE CALDWELL  
SPONSOR OF THE SENIOR CLASS





RALPH BURTON RUBINS  
B. A., M. A.

Ohio Wesleyan University  
University of Chicago  
Superintendent of Public Instruction  
Bristol, Tennessee

ISAAC DELANEY EGGERS  
B. S.

State Teachers' College  
University of Tennessee  
Principal Tennessee High School





FACULTY

FAN LIN BAUMGARDNER  
Bristol Commercial College  
State Teachers College  
Columbia University  
Registrar

BESS BROCE  
Sullins College  
B. A., King College  
English

CLYDE EDWIN BURNS  
B. A., Milligan College  
B. S., State Teachers College  
Industrial Arts

GENEVIEVE RICE CALDWELL  
B. S., University of Tennessee  
M. A., University of Tennessee  
English

HALLIE HOUSTON CARSON  
A. B., Emory and Henry College  
A. B. in L. S., Emory University  
Librarian

ROSARIO CATALDO  
Naples College, Naples, Italy  
Conductor of Band

PEARLE WALLACE COWAN  
Sullins College  
Agnes Scott College  
Dietitian

ANNIE NEELD DRYDEN  
A. B., University of Tennessee  
Columbia University  
French and Algebra

JAMES WILLIAM ELMORE  
LL. B., University of Tennessee  
Physical Education  
History

CELIA FEINSTEIN  
A. B., Mississippi S. C. for Women  
Columbia University  
Typewriting

ELIZABETH HICKS FERGUSON  
B. S., Peabody College  
State Teachers College  
Civics and History

GEORGE GARDNER GILLINGHAM  
A. B., Maryville College  
University of Tennessee  
Economics and History

KATHRYN ANN GRISARD  
B. S., University of Tennessee  
Tennessee College  
Social Science  
Physical Education

ZONA WILSON HAGGARD  
B. S., University of Tennessee  
Home Economics

VERLIE COFFMAN KOLTINSKY  
A. B., Bowling Green College  
Western Kentucky Teachers College  
Commercial Education

ROBERT LEE LADD  
B. A., Carson-Newman College  
M. A., George Peabody College  
Vanderbilt University  
University of Alabama  
Latin

ANNA BELLE LYNN  
B. A., Rogersville College  
Sullins College  
Mathematics

MARY RUCKER MARNEY  
S. T. C., Farmville, Va.  
Emory and Henry College  
S. T. C., Johnson City, Tenn.  
English and Latin

ROBERT EUGENE McCLELLAND  
B. A., Emory and Henry College  
Social Science

MARGARET OAKLEY NININGER  
A. B., University of Tennessee  
Virginia Intermont College  
Columbia University  
English

FRANCIS REVELEY OWEN  
B. A., Emory and Henry College  
Sullins College  
Randolph Macon Woman's College  
Columbia University  
Mathematics

EVERETT LEE ROWE  
B. S., Western Kentucky S. T. C.  
Physics

DELLE DULANEY SMITH  
B. S., University of Tennessee  
M. S., University of Virginia  
Science and History





Helen Baker  
Editor-in-Chief



Gaynelle Combs  
Business Manager



Edwin Powers  
Photographic Editor



Mildred Arnold  
Assistant Editor



Harold Roberts  
Boys' Athletic Editor



Catherine Dorot  
Snapshot Editor



Martha Blades  
Art Editor



Claudia Woodard  
Secretary



Robert Clark  
Assistant Art Editor



James Dougherty  
Literary Editor



Mary Ashley  
Literary Editor



Hazel Moore  
Girls' Athletic Editor



Kelly McKee  
Literary Editor



Elsie Whittaker  
Literary Editor



George Galliher  
Literary Editor



Linda Marshall  
Literary Editor

CLAMUS

CLUB



# SENIORS



SENIOR CLASS

Mrs. Caldwell, Sponsor

Fall Term

David Peoples, President  
Mitchell Allen, Vice-President  
Ethel Riordan, Secretary  
Guy Francis, Treasurer

Spring Term

Taylor Cowan, President  
Herbert Marcy, Vice-President  
Fred Dulaney, Secretary  
Ida Rutherford, Treasurer

Alpha and Omega

Ah, well we remember that morn of September  
The yellowing sun from its smoldering ember  
Began with its light a dark sky to caress,  
When thirsting for knowledge we sought T. H. S.

So swiftly the days and the months flew by  
While each one was whispering "Win, do try."  
Then strode we along with measur'd delight;  
On high was the banner, Maroon and White.

We'll never regret with remorse nor fear  
The standards upheld of our school so dear.  
We've sated ourselves in work, play, and fun.  
The battle is o'er our vict'ry is won.

Our schooldays are over; life to us calls  
No more shall we enter--Tennessee's halls.  
The twilight is stealing swift o'er our way,  
We've come to the end of a perfect day.

Mildred Arnold, Poet



KATHERINE O'RY EVERSOLE  
Classical

"Not too serious, not too gay,  
But a rare, good girl when it  
comes to play."

ROBERT HUGH LESLIE  
Classical

"To those who know thee not,  
No words can paint;  
And those who know thee, know  
All words are faint."

BURDETTE KAYLOR  
Manual Arts

"Happy am I; from care I'm free!  
Why aren't all contented like me?"

MARY JUNE SMITH  
Home Economics

"Better be small and shine  
Than large and cast a shadow."

HELEN RUE BAKER  
Classical  
Polytechnic

"A living definition of a perfect  
personality."

SAMUEL FIELDS SHANKEL  
Classical

"The reason firm, the temperate will,  
Endurance, foresight,  
strength, and skill."

KERMIT CARTRIGHT LINDAMOOD  
Manual Arts

"With a pleasing personality and  
a winsome way.  
He makes others happy every hour  
of the day."

IDA MAE STATZER  
Home Economics

"She is gentle and modest,  
retiring and good,  
Always acting as a lady should."







HERBERT McLEAN FURLOW  
Polytechnic

"Naught venture, naught have."

MILDRED FAYNE ARNOLD  
Commercial

"Her pencil was striking,  
resistless, and grand,  
Her manners were gentle,  
complying, and bland."



CLAUDIA ESTHER WOODARD  
Commercial

"Who knows her knows a friend."

EDWARD MATHESON ROLLINS  
Classical

"Just a good fellow with a mind  
supreme,  
Nothing impossible is Edward's  
theme."



DAVID STUART PEOPLES  
Classical  
Polytechnic

"A friend, a pal, a comrade rare  
A boy who's always fair and square."

MARJORIE THOMAS WHITTAKER  
Polytechnic

"A friend who knows and dares to say,  
The brave, sweet words that cheer  
the way."



MARY GAYNELLE ASHLEY  
Classical

"Grace was in her steps, heaven  
in her eyes,  
In every gesture love."

HAROLD GRAHAM ROBERTS, JR.  
General

"Time, I dare you discover,  
Such a youth, and such a lover."



DAN MATTHEW KING  
Manual Arts

"Need was, need is, and need will  
ever be,  
For him and such as he."

ETHEL CAROLYN RIORDAN  
Commercial

"She was our queen."

GAYNELLE COMBS  
Classical  
Polytechnic

"Forever dear, forever loved  
forever her friend's delight."

FRED DULANEY  
Classical  
Polytechnic

"...full of valor as of kindness."

JAMES THOMAS CARTER  
Classical  
Polytechnic

"Such men as he  
be never at heart's ease  
Whilst they behold a greater than themselves."

ALICE TARVER CALDWELL  
Polytechnic

"It is nice to be natural,  
when you are naturally nice."

EVELYN LOUISE SOLOMON  
Commercial

"A cheery smile, a pleasant way,  
We'd like to meet her everyday."

GEORGE SMALLING  
Polytechnic

"A kinder gentleman treads not  
the earth."







BETTY LOU ARBUCKLE  
Commercial

"There's nothing so becomes a girl  
as modest stillness."

WILLIAM WOODROW DISHNER  
Classical

"Unforced with punishment,  
unawed by fear,  
His words were single  
and his soul sincere."



ROBERT WENDELL CLARK  
Polytechnic

"An ounce of wit is worth a  
pound of sorrow."

ELEANOR LOIS SOLOMON  
Commercial

"Endeavoring to make the world  
a little brighter  
because she lives in it."



MARY KATHLEEN RUTHERFORD  
Home Economics

"Jolly, clever, athletic, care-free--  
That's Kathleen."

HERBERT GEORGE CROSS  
Commercial

"He set his heart upon the goal,  
Not on the prize."



HAROLD DULANEY HAGY  
Classical

"I'll be merry and free  
I'll be sad for nae-body."

BEULAH MAE WITT  
Home Economics

"Laugh and the world laughs  
with you."



GUY WOODROW FRANCIS  
Commercial

"Wise to resolve,  
and patient to perform."

CATHERINE MARIE DORIOT  
Classical

"Her life is a bubbling stream,  
Overflowing with enthusiasm."

MARTHA LOUISA BLADES  
Classical

"Some win by beauty and grace,  
they say,  
But she by her own demire little way."

JOHN ISAAC BARRON  
Polytechnic

"An unassuming boy in truth,  
a lad of decent parts,  
and good repute."

WILLIAM ERNEST STULTZ  
Polytechnic

"Whatsoever is worth doing is  
worth doing well."

CUSTIS IRENE BELL  
Commercial

"She does her task from day to day,  
And meets whatever comes her way."

SARAH ELIZABETH SHELL  
Polytechnic

"Those about her  
From her shall read the perfect ways  
of honor."

JAMES DALTON  
Commercial

"A heart with room for every joy."







MITCHELL REEVE ALLEN  
Commercial

"Her every tone is music's own  
Like those of morning birds,  
And something more than melody  
Dwells ever in her words."

JAMES JOSEPH DOUGHERTY  
Classical  
Polytechnic

"None but himself can be  
his parallel."



LOUISE FRANKLIN  
Home Economics

"The fair, the chaste, and  
unexpressive she."

VIRGINIA LEE GURLEY  
Commercial

"'Tis the song you sing  
and the smile you wear  
That makes the sunshine everywhere."



HUGH FREDERICK ASH  
Polytechnic

"Devout yet cheerful, active yet  
restrained."

ELIZABETH MARGARET O'DELL  
Home Economics

"A smiling friend, a true friend,  
a friend to all."



MILDRED STONE  
Home Economics

"...her face  
Made sunshine in the shady place."

NEAL DARIUS PRESLEY, JR.  
Polytechnic

"A merry heart, both good and kind,  
A truer friend 'tis hard to find."



WOODROW WILSON BOOHER  
Commercial

"The force of his own merit makes his  
way."

MARIAN GRACE THOMAS  
Commercial

"What e'er befell her she smiled."

HELEN MAURINE BARKER  
Commercial

"...steadfast in joy and in sorrow,  
...dearer today and tomorrow."

DENVER CLARENCE DISHNER  
Manual Arts

"And I have oft heard defended,--  
Little said is soonest ended."

CARL O'DELL  
Commercial

"Men of few words are the best men."

MARJORIE ELIZABETH POE  
Classical

"Faithful and true; without a doubt  
she will succeed."

HAZEL BEATRICE MOORE  
Home Economics  
Commercial

"Always willing to lend a hand."

HERBERT MARCY  
Commercial

"Gentle and thoughtful, kind and true,  
ready to do his share,  
A boy to be relied upon at school  
and everywhere."







WILLIAM MACK BOYD  
General

"In ev'ry inch a sportsman,  
Unrivald by the hardest foe."

ELSIE BROWN WHITTAKER  
Classical

Thy modesty's a candle to thy merit."



FRANCES KENSINGER  
Classical

"What's true beauty but fair virtue's  
face  
Virtue made visible in outward grace."

EDWIN REEDER POWERS, JR.  
Polytechnic

"He is complete in features and mind  
With all good to grace a gentleman."



JAMES KENNETH WOLFORD  
Polytechnic

"The heart to conceive,  
the understanding to direct,  
or the hand to execute."

MARGARET MAY HUFF  
Home Economics

"There is a chord in the music  
that is missed when you  
are away."



ELIZABETH CHRISTINE ARNOLD  
Commercial

"More is thy due than more  
than all can pay."

TAYLOR OLYNTHEUS COWAN  
Polytechnic

"He hath a daily beauty in his life  
That makes me ugly."



IDA ISABELLE RUTHERFORD  
Commercial

"A maiden never bold,  
A spirit still and quiet."

GEORGE MERRIMAN SMITH  
Commercial

"A quiet unassuming chap of  
inestimable worth."

REEVE COWAN BOY  
Manual Arts

"His words are bombs,  
his oaths are oracles;  
His love sincere,  
his thoughts immaculate."

ALICE KING COMBS  
Classical

"Her modest manners and graceful air  
Shows her wise and modest  
as she is fair."

LINDA REEVE MARSHALL  
Classical  
Polytechnic

"True merit's like a river, the deeper  
it is, the less noise it makes."

KELLY TILSON McKEE  
Classical  
Polytechnic

"Few things are impossible  
to diligence and skill."

CLARA RUTH EMMERT  
Commercial

"Infinite riches in a little room."

IRMA ESTELL MILLARD  
Home Economics

"Of softest manners, unaffected mind;  
Lover of peace and friend of  
humankind."







WILLIE JOE MATTOX  
Commercial

"Once a friend always a friend."

EDITH CECIL O'DELL  
Commercial

"Modesty is the life of her,  
Friendliness is her theme."



CHESTER KENNETH FINE  
Commercial

"Good nature and good sense  
Are usually good companions."

PEARLE WILSON  
Commercial

"Where hearts are true,  
Few words will do."

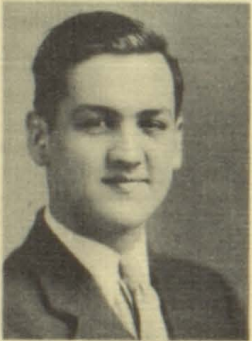


ISABELLE NEALE  
Commercial

"The world were not so bitter,  
but a smile could make it sweet."

CARRIE VICTORIA PAINTER  
Polytechnic

"To say little and perform much  
Is the character of true greatness."



ROY LEWIS STOCKTON  
Polytechnic

"Sport that wrinkled Care derides,  
And laughter holding both her sides."

MARTHA EDNA BARR  
Polytechnic

"A soul as white as heaven."



JOYCE PAULINE YANCEY  
Classical

"A friend to all who know her."

GEORGE HOKE GALLIHER  
Classical

"Elegant as simplicity  
Warm as ecstasy."



## CLASS HISTORY

We should have known:

They had always told us that some day it must end, but we did not believe them. Then came a day of realization for each one of us-----a day of realizing that we were nearing the end, that soon we were to leave as fledglings the motherly protection of old Tennessee, that soon we were to try our wings.

Five years. Has it really been five years? It seems such a short time and yet such a long time. So many things have happened. So many changes, so many good times, so many laughs. A few tears, too---it all wouldn't have been real without some sadness.

Eagerly, though fearfully, we approached high school life as pilgrims approach a holy place. Awe. We certainly had awe, whether we had much else or not. Most of us were rather dazed during all that first year. The mysteries that were unfolded to us! Latin! the word was terrifying. Algebra! was it true that you could add and subtract letters of the alphabet?

Returning the next year as Freshmen, we felt that we had reached the heights of Olympus. Men and women of the world. What a thrill to descend from the auditorium balcony to seats downstairs for assembly! That was the one "comedown" that we didn't mind in the least.

Sophomores! So we had reached the "silly age." But what if we were a little rowdy? After all what did it matter? What did anything matter except that we were Sophomores and happy? The big event of the year was the first annual Mardi Gras.

Was it possible that we had at last become Juniors, that we were upper-classmen? When it had fully dawned on us, we began to acquire a little dignity by which we might be recognized as superior creatures. One of our major calamities descended upon us--we were to have no Junior play. Those histrionically inclined were forced to subdue their wild desires to act. The Junior-Senior banquet and dances were social highlights of the year. The climax came when we became Seniors on class night. The pinnacle had been reached.

All summer we had so called "illusions of grandeur." We were on the threshold of our Senior year! When school at last started, our inferiors had no trouble detecting a marked change in each of us. That "certain Senior something" had taken possession of each of us.

We were jubilant to find that Mrs. Genevieve Caldwell was to be our sponsor. On September 18 and 19, we met to elect officers for the fall term. Those honored were: David Peoples, president; Mitchell Allen, vice-president; Ethel Riordan, secretary; and Guy Francis, treasurer. On October 20 we met to make plans for our annual, the Cadmea.

Then came the CWA. We left school on November 29 for the Thanksgiving holidays, little dreaming that we were not to return until January 2 because of repair work on the building. On January 9 we elected Bob Clark as our prophet, Margaret Huff as our giftorian, and Marjorie Whittaker as the author of our last will and testament.



Then came real work-----getting up our Mardi Gras. Finally, on January 26 the big event took place and was a tremendous success. On February 16 we elected the following officers for the spring term: Taylor Cowan, president; Herbert Marcy, vice-president; Fred Dulaney, secretary; and Ida Rutherford, treasurer.

On March 2 came the highlight of highlights-----The Fire! Although we had had eleven years of fire drills we had never dreamed of having a fire. During those minutes that the flames were flaming and the smoke smoking, we Seniors felt our hearts sink within us--what if we shouldn't graduate this year after all?

April 20 saw the presentation of the annual Hi-Y operetta, The Sunbonnet Girl, with the following Seniors taking leading parts: Mitchell Allen, Mack Furlow, Ed Powers, Harold Roberts, Gaynelle Combs, Helen Baker, and your chronicler.

The remaining events of the year and of our high school life are recorded in our memories only, because--well, you know how these printers are.

It's hard, so hard, to leave. But is our leaving so absolutely complete, so final? We feel that we are leaving something with old Tennessee, something that those coming after us will not let die----a glowing flame of sincere love of our Alma Mater that the years will not dim.

And so, dear Tennessee, farewell---farewell.

Edward Rollins, Historian



## LAST WILL AND TESTAMENT

We, the Senior Class of Tennessee High School, in the City of Bristol, County of Sullivan, State of Tennessee, on this the day of the fifteenth of June in the year of our Lord, Nineteen Hundred Thirty-four, being of unsound mind and hopeless judgment, do hereby declare this our last will and testament to be carried out as follows:

### SECTION I

- Item I. To Mr. Eggers and Mr. Rubins who patiently, but with great discouragement, have endured tardies, unexcused absences, withdrawals, etc.--the Senior Class being unusually puny this year--we bequeath happy and more restful years.
- Item II. To the faculty we leave our many thanks for their not entirely unsuccessful effort to "learn" us something.
- Item III. To Mrs. Caldwell, our beloved and patient sponsor, we bequeath our deepest appreciation for her untiring work with said class.
- Item IV. To the "Subs" we leave great pleasure in the thought that someday they also may be dignified Seniors, and there will be more "Subs", and also good showers with nice cold water--when that time comes you will understand and forgive.
- Item V. To the Senior Class of '35 we hereby bequeath our perfect dignity, our agile (?) minds, and our wonderful times at Tennessee High.
- Item VI. To the Band, of which we are very proud, we bequeath a sound-proof hall for practice. May they blast away!
- Item VII. To the janitors we wish to reveal a little secret and impart advice-----we were not the ones who did all of that paper-throwing in study hall-----watch the Juniors!

### SECTION II

Our remaining personal bequests are as follows:

- Item I. We, Hugh Ash and Reeve Boy, leave our scientific attitude to Charles Cowan.
- Item II. We, Mary Ashley, Catherine Doriot, and Katherine Eversole, leave our effervescent dispositions with Edythe Webb.
- Item III. We, John Barron, Clarence and Woodrow Dishner, Helen Barker, Sarah Shell, Pearle Wilson, Elizabeth O'Dell, knowing that silence is golden do bequeath some of it to Alex Andersen--perhaps he may have use for it sometime.
- Item IV. We, Kathleen Kutherford, Marjorie Poe, Ed Rollins, Kenneth Fine, and Beulah Witt, leave our garrulity to Bradley Senter, hoping that he will run down some day.
- Item V. I, Taylor Cowan, bequeath my art at writing love letters to H. L. Love, with best wishes for success.
- Item VI. We, Lewis Stockton and Darius Presley, bequeath to Eugene Fleenor our feeble (?) efforts to make ourselves heard.
- Item VII. We, Mildred Stone, Martha Blades, Alice Combs, and Elizabeth Arnold, leave to Salome Hagan, our sweet dispositions, with the understanding that she doesn't melt.
- Item VIII. I, "Babe" Roberts, do leave my appearance of overwork to George Trammell.
- Item IX. I, Ed Powers, do bequeath to James Ringley that hidden formula for turning feminine hearts into tail-spins, provided he will put aforesaid legacy to immediate and constant use.
- Item X. I, Ethel Riordan, bequeath my "swankiness" to Catherine Lynch.
- Item XI. We, Mack Furlow and James Wolford, bequeath to Frank Watson, our skill in making public speeches and announcements.
- Item XII. I, Dan King, leave my motorcycle to Catherine McGhee in order that she may get to school on time once in a while.
- Item XIII. We, Kelly McKee and Sam Shankel, do leave our "personality plus" to Dewey Eastridge.
- Item XIV. I, Woodrow Bocher, endowed with an argumentative nature, do leave a book of my victories to Joe Leslie.
- Item XV. We, Elsie Whittaker, Evelyn Solomon, and Ida Rutherford, bequeath to Mabel Taylor our ability to ask questions.



- Item XVI. I, David Peoples, being possessed of dancing feet, do hereby bequeath to Howard Shoemaker my famous "dancing reputation," with the provision that he does not "fall down" on the job.
- Item XVII. We, Alice Caldwell and George Smalling, leave to Miss Owen our pictures for her well known "Rogues Gallery."
- Item XVIII. We, Isabelle Neal, Grace Quales, Virginia Gurley, Carrie Painter, Louise Franklin, Ruth Emmert, Custis Bell, and James Carter, leave to T. H. S. pleasant memories and good records of ourselves.
- Item XIX. I, Mitchell Allen, bequeath to the Glee Club one canary to compensate for my absence.
- Item XX. We, George Smith and Hazel Moore, leave the honor of carrying on the fame made by our curly "red tops", to Ruth Buckles.
- Item XXI. I, Irma Millard, leave to Mrs. Koltinsky, fifteen gray hairs.
- Item XXII. We, Betty Arbuckle, Bob Leslie, Claudia Woodard, Eleanor Solomon, Mildred Arnold, and Grace Thomas, wish to leave to Marguerite Parks our position as Tennessee High advertising agent for the Thermique Permanent Wave.
- Item XXIII. We, Kermit Lindamood, Edith O'Dell, Willie Joe Mattox, Martha Barr, and Ida Mae Statzer, do hereby leave to Miss Smith two cases of those small American History Books, which have been in such a great demand, with the provision that she distribute them among the members of the class.
- Item XXIV. We, Guy Francis, Carl O'Dell, and Ernest Stultz, leave our famous ability to blush to John Caldwell.
- Item XXV. We, Fred Dulaney and Herbert ("nuts" to you) Marcy, our special gift being sarcasm, hereby leave a book of new remarks to Ina Sparger.
- Item XXVI. I, George Galliher (Patrick Henry the Second), bequeath to Miss Nininger a new speech for some of the other Patrick Henrys.
- Item XXVII. I, Margaret Huff, "the fairest of the fair," leave to Pollie Johnston the above title.
- Item XXVIII. We, Herbert Cross and Jim Dalton, leave to Mr. Elmore a case of Brown's Mule--under one condition--that he provide a "chew" for each member of the team.
- Item XXIX. I, Pauline Yancy, leave my "goldie locks" to Louise Smith.
- Item XXX. We, Harold Hagy and Burdette Kaylor, hereby bequeath our well known swagger to Billy Neal.
- Item XXXI. We, Bill Boyd and June Smith, bequeath our ability to shoot goals to Evan Roberts and Catherine Wolfe.
- Item XXXII. We, Gaynelle Combs and Helen Baker, bequeath our beautiful friendship to Jane Wood and Josephine Snodgrass.
- Item XXXIII. I, Frances Kensinger, being dubbed one of the "cutest of our class", do hereby bestow upon Evelyn Byrd the above title.
- Item XXXIV. We, Linda Marshall and Bob Clark, bequeath our artistic ability to Ralph Baker.
- Item XXXV. I, Marjorie Whittaker, knowing that all bad things must end sometime, do hereby bequeath my numerous titles, such as "Shorty", "Stumpy", "Half-pint," and all such endearing terms, to Ada Rutherford.

Marjorie Whittaker, Attorney-at-Law.

Signed:  
Taylor Cowan, President Senior Class



THE CLASS OF THIRTY-FOUR

Come, dear old Class of '34,  
Let's get together and ponder o'er  
Our future, whether it be grave or gay.  
We'll consult the Oracle and hear it say  
What Fate has in store for each and all.

What do we see there in the future dim,  
Joy and success, or woe and failure grim?  
As the years of Time march on a score,  
We see great changes from days of yore.

One of our number attains a chair at Yale--  
Several are farmers, hearty and hale.  
Crooners? We've two who live in a whirl,  
Radio's gift to the American girl.

Over there is that "sentimental son of the South."  
Who sings Dixie's praise by word of mouth.  
He, at last, has written a poem or two,  
That have been commended in the Literary Review.

One of the sweet girls on my right  
Has become a matron of power and might,  
Reigning in Halls of Congress--a queen.  
'Tis hard to believe she once skipped on the green.

Put spectacles on that stripling's nose,  
Broaden his waist and what do you s'pose?  
A learned philosopher is he now,  
With stately tread and furrowed brow.

On my left you see a maiden fair,  
Happy and bright, without a care.  
She becomes a nurse whose tender skill  
Comforts the dying, heals the ill.

And there is the lad so neat and clean,  
Who meets his doom in a flying-machine.  
The plump girl next him, as long as she's able,  
When keeping her house, will set a fine table.

You see the tall chap, so graceful and lean,  
(The one over there is the fellow I mean.)  
He becomes the man with the voice sonorous,  
Who directs the band and sings the chorus.

And that fair maid with grave intention,  
Leads a career too gloomy to mention.  
She should have changed her vocation and wed,  
And made home happy--that's enough said.



Among this group there are men of great skill,  
Who doctor the people and send in their bill.  
There's an osteopath strenuous, who rubs with a will.  
He feeds patients on spinach and gives never a pill.

There's a dentist adept, who "pulls without pain,"  
He plugs up the cavities--often in vain.  
If teeth ever wear out in spite of his work,  
He furnishes false ones--he's not one to shirk.

Among other Medicos evolved from this class,  
Is that meek young student who's grown bold at last.  
He doses animals, both wild and tame,  
And calls each disease by its Latin name.

A worthy of note is the noble D. D.  
Good deeds are his principal hobby, you see.  
If you list to his sermons your soul he will save.  
He'll help you through life and pray o'er your grave.

Now we behold as we peer in the ball,  
Some of our number who chose best of all.  
They are the ones who're the "salt of the earth,"  
Mothers grown careworn from labors of worth.

Then there're the teachers, so firm and yet kind.  
(They have no trouble to make children mind.)  
As up the steep path of knowledge they lead,  
The students will follow and their precepts heed.

So I could proceed till the morrow should dawn,  
If the curtain from each life's future were drawn,  
But I very much fear you would vote me a bore--  
Give me the razzberry--show me the door.

It sufficeth to say that each of the class,  
From the ugliest boy to the most winsome lass,  
Faithful will prove in the battle of life,  
Whether fighting alone, or with husband or wife.

We know that when we are wrinkled and gray,  
When youth is gone with its pleasures so gay,  
For our classmates we often will long for a sight,  
When we sit in the firelight and think of this night.

Though we may live to be four score and ten,  
With folk we love vanishing soon from our ken,  
We'll never forget through the years as they pass,  
Old Tennessee High--Nineteen-thirty-four Class!

--Robert Clark, Prophet



# OUR QUEENS



JOSEPHINE SNODGRASS  
JUNIOR QUEEN



ETHEL RIORDAN  
SENIOR QUEEN



DOROTHY COUNTS  
SUB-FRESHMAN QUEEN  
QUEEN OF MARDI GRAS

MARY ANN MORISON  
FRESHMAN QUEEN



RUTH MORTON  
SOPHOMORE QUEEN





OUR RECORD IN TENNESSEE HIGH

MITCHELL ALLEN

Athletic Council, '32; V-President Senior Class, '33; V-President Girls' Hi-Y, '33; V-President Glee Club, '33; Historian Glee Club, '34; Secretary-Treasurer Civics Club, '30; Tennis Club, '32; Commercial Club, '30.

BETTY ARBUCKLE

Civics Club; Secretary Commercial Club, '34; Science Club.

ELIZABETH ARNOLD

V-President Commercial Club, '34; Civics Club; Science Club.

MILDRED ARNOLD

Girls' Hi-Y, '33, '34; Associate Editor Cadmus Club, '33, '34; Glee Club; Maroon and White, '31, '32, '33, '34.

HUGH ASH

Alchemist Club; Speak Easy Club; Manual Arts Club; President Debating Club, '34.

MARY ASHLEY

Girls' Hi-Y, '33, '34; French Club, '33; Alchemist Club, '33, '34; Literary Editor Cadmus Club, '33, '34.

HELEN BAKER

Treasurer Glee Club, '31; Glee Club, '31, '32; Tennis Club, '32; Dramatics Club, '32, '33, '34; Varsity Basketball, '33; Athletic Council, '33; Intra-Mural Basket Ball, '32, '34; All Students' Council, '33, '34; Editor-in-Chief Cadmea, '33, '34; Girls' Hi-Y, '32, '33, '34.

HELEN BARKER

Civics Club, '30; French Club, '33, '34; Commercial Club, '33, '34.

MARTHA BARR

Girls' Chorus, '31, '32; Alchemist Club, '32, '33, '34.

JOHN ISAAC BARRON

Boys' Hi-Y, '33, '34; Basketball; Football, '33.

CUSTIS BELL

Science Club, '31; Commercial Club, '31, '32, '33, '34; Glee Club, '31.

MARTHA BLADES

Girls' Chorus, '30, '31; Alchemist Club, '33; Tennis Club, '32; Art Editor Cadmus Club, '33, '34; Dramatics Club, '33, '34

WOODROW BOOHER

Oratory and Debating, '32, '33.

REEVE BOY

Science Club, '32, '33, '34; Boys' Hi-Y, '33, '34; Band, '31, '32, '33, '34; Secretary-Treasurer Manual Arts Club, '32; President Manual Arts Club, '33; Manual Arts, '30, '31, '32, '33; President Science Club, '34.

WILLIAM BOYD

Boys' Hi-Y; Basketball, '32, '33, '34.

ALICE CALDWELL

Girls' Chorus, '30, '31, '32; Treasurer Girls' Chorus, '30; Dramatics Club, '33, '34; Alchemist Club, '33, '34; Athletic Council, '33; Tennis Club; Secretary 8A Class, '29.

ROBERT CLARK

Cadmus Club, '34.

ALICE COMBS

Girls' Chorus, '30, '31; Alchemist Club, '32; Girls' Hi-Y, '32, '33, '34; Maroon and White, '32, '33, '34.



GAYNELLE COMBS

Secretary Glee Club, '31; Librarian Glee Club, '31; Treasurer Glee Club, '32; Intra-Mural Basket-ball, '33; Tennis Club, '32; Athletic Council, '33; Girls' Hi-Y, '32, '33, '34; Business Manager Cadmea, '33, '34; Treasurer Girls' Hi-Y, '33.

HERBERT CROSS

V-President Sophomore Class, '32; Boys' Hi-Y, '33, '34; President Junior Class, '33; Manual Arts Club, '32, '33; Football, '32, '33; Captain Football, '33.

TAYLOR COWAN

French Club, '33, '34; President French Club, '33; Boys' Hi-Y, '33, '34; President Senior Class, '34; Public Speaking Club, '32; Manual Arts Club, '32, '33; Band, '30, '31, '32, '33, '34.

JAMES DALTON

Track, '32, '33; Varsity Football, '30, '31, '32, '33; Varsity Basketball, '33, '34.

CLARENCE DISHNER

Junior Varsity Basketball, '34.

CATHERINE DORIOT

V-President Freshmen Class, '31; Cadmus Club, '33, '34; Dramatic Club, '33, '34; Basketball, '30, '31; Girls' Hi-Y, '33, '34; Secretary Girls' Hi-Y, '34; Girls' Chorus.

JAMES DOUGHERTY

Boys' Hi-Y; Alchemist Club; Cadmus Club, '33, '34; Athletic Council.

FRED DULANEY

French Club, '32, '33, '34; V-President Junior Class, '33; Public Speaking Club, '33; Secretary Senior Class, '34; Boys' Hi-Y, '33, '34; Maroon and White Staff, '33, '34; Athletic Council, '32, '33.

RUTH EMMERT

Treasurer Commercial Club, '34; Secretary Civics Club, '34.

KATHERINE EVERSOLE

Intra-Mural Council, '33; Athletic Council, '31, '32; Tennis Club, '32; French Club; Secretary Girls' Hi-Y, '33; Girls' Hi-Y, '32, '33, '34.

KENNETH FINE

Commercial Club; Alchemist Club; Manual Arts Club.

GUY FRANCIS

Treasurer Junior Class; Treasurer Senior Class.

LOUISE FRANKLIN

Glee Club, '33; Dramatic Club, '32; Commercial Club, '32, '33.

MACK FURLOW

President All Students' Club, '33; French Club, '31, '32; Treasurer All Students' Club, '32; Varsity Basketball, '30, '31, '33, '34; Band, '30, '31, '32, '33, '34; Alchemist Club, '32, '33; All Students' Club Council, '32, '33, '34; V-President All Students' Club, '34; Commercial Club, '30; Assistant Manager Football, '30; V-President Debating Club, '33, '34; Boys' Hi-Y, '33, '34; Sports Editor Maroon and White, '30, '31, '32, '33, '34; Dramatic Club, '32, '33, '34.

GEORGE GALLIHER

Commercial Club, '34; French Club, '32, '33, '34; Alchemist Club, '34; Literary Editor Cadmus Club, '33, '34; Speak Easy Club, '34.

VIRGINIA GURLEY

Commercial Club, '32, '33; Girls' Hi-Y, '33, '34; Alchemist Club, '33, '34.



MARGARET HUFF

Basketball, '29, '30, '31; Secretary All Students' Club Council, '33; V-President Sophomore Class, '32; French Club, '31; V-President French Club, '33; Treasurer All Students' Club Council, '34; V-President Dramatic Club, '33; Athletic Council, '33; Dramatics Club, '32, '33, '34.

BURDETTE KAYLOR

Industrial Arts Club, '30, '31, '32, '33

FRANCES KENSINGER

Treasurer Junior Class; President French Club; Dramatics Club.

DAN KING

President 8A Class, '28; President Boys' Hi-Y, '30; All Students' Club, '31; Band, '30, '31, '32, '33; Sergeant-at-Arms Hi-Y, '30; V-President Freshman Class, '29; Boys' Hi-Y, '29, '30, '31; Football, '29, '30, '31; Manager Football, '33.

ROBERT LESLIE

Debating Club, '31, '32, '33, '34; President Debating Club, '33; Treasurer Dramatics Club, '32, '33, '34; French Club, '32, '33; V-President Junior Class, '32; Band, '30, '31, '32, '33, '34; Dramatics Club '32, '33, '34; Secretary-Treasurer French Club, '33; Maroon and White, '32, '33, '34; V-President Debating Club, '33

KERMIT LINDAMOOD

Football, '32, '33; Track, '31; Athletic Council, '31, '32; Public Speaking; Manual Arts, '33, '34.

HERBERT MARCY

Civics Club, '29; Boys' Hi-Y, '33, '34; Science Club, '32, '33; Basketball, '32, '33, '34; Football, '32, '33.

LINDA MARSHALL

Girls' Hi-Y, '33, '34; Tennis Club, '32; Girls' Chorus, '30, '31; Glee Club, '33; Dramatics Club, '32, '33, '34; Literary Editor Cadmus Club, '33, '34.

WILLIE JOE MATTOX

Science Club, '31; Basketball, '32; Dramatics Club, '33, '34; Commercial Club, '32, '33, '34.

KELLY McKEE

Manual Arts Club, '31; Literary Editor, Cadmus Club, '33, '34; Boys' Hi-Y, '33; Secretary-Treasurer Boys' Hi-Y, '32; Alchemist Club, '32; Dramatics Club, '32, '33, '34; Treasurer Sophomore Class; Maroon and White, '31, '32.

IRMA MILLARD

Civics Club, '32; Girls' Hi-Y, '33, '34; Speak Easy Club, '33, '34.

HAZEL MOORE

Girls' Athletic Editor Cadmus Club, '33, '34; Commercial Club, '32, '33, '34; All Students' Club Council, '34; Maroon and White, '32, '33, '34; President Commercial Club, '34.

ISABELLE NEAL

Civics Club, '30, '31; Commercial Club, '31, '32, '33; Glee Club, '31, '32.

CARL O'DELL

Commercial Club, '32, '33, '34; All Student Club Council, '33; Boys' Hi-Y, '32; President Commercial Club, '33.

EDITH O'DELL

Commercial Club, '32, '33; Civics Club, '31; Dramatics Club, '33, '34.

ELIZABETH O'DELL

Civics Club

CARRIE PAINTER

Science Club, '32; Glee Club, '32, '33, '34; Girls' Hi-Y, '33, '34.



DAVID PEOPLES

V-President French Club, '32; President Senior Class, '33; Boys' Hi-Y, '33, '34; President Junior Class, '33; Maroon and White, '33, '34; Athletic Council, '31, '32; Alchemist Club; President Dramatics Club, '34; Varsity Basketball, '34; All Students' Club Council, '32, '33, '34.

MARJORIE POE

Athletic Council, '34; Intr-Mural Council, '33, '34.

EDWIN POWERS

Maroon and White, '30, '31; Cadmus Club, '33, '34; President Boys' Hi-Y, '32; All Students' Club Council, '32; Speak Easy Club, '33, '34; President All Students' Club, '33; V-President Boys' Hi-Y, '32; Secretary Sophomore Class, '31; Basketball, '32, '33; Football, '31, '32; Sergeant-at-Arms Boys' Hi-Y, '33; President Speak Easy Club, '33; Athletic Council, '32; Boys' Hi-Y, '34.

ETHEL RIORDAN

Commercial Club, '32, '33, '34; Alchemist Club, '33, '34; Secretary and Treasurer, '34; President Girls' Hi-Y, '34; Girls' Hi-Y, '33, '34; Secretary Junior Class; Maroon and White, '33, '34; Secretary Senior Class.

HAROLD ROBERTS

Dramatics Club, '32, '33; Football, '29, '30, '31, '32, '33; Track, '29; V-President Boys' Hi-Y, '33; Boys' Hi-Y, '32, '33, '34; Boys' Athletic Editor Cadmea; Basketball, '29, '30, '33, '34.

EDWARD ROLLINS

Boys' Hi-Y, '33, '34; Maroon and White, '33, '34; Treasurer Dramatics Club, '33, '34; Dramatics Club, '31, '32, '33, '34; Historian Senior Class, '33, '34; Managing Editor, Maroon and White, '32, '33; Track, '34; Editor-in-Chief, Maroon and White, '33, '34; Debating, '33; Athletic Council, '31, '32; V-President Dramatics Club, '33, '34; All Students' Club Council, '33, '34; Science Club, '33; President Employment Bureau, '34.

IDA RUTHERFORD

Maroon and White, '33, '34; Girls' Hi-Y, '33, '34; Secretary-Treasurer Alchemist Club, '33; Treasurer Senior Class, '34; Commercial Club, '32, '33, '34; Alchemist Club; Treasurer Girls' Hi-Y, '34.

KATHLEEN RUTHERFORD

V-President Freshman Class, '30, '31; V-President Athletic Council, '33; Secretary Sophomore Class, '32; Basketball, '30, '31; Intra-Mural Council, '32, '33, '34; Manager Intra-Mural Athletics, '33, '34; Athletic Council, '30, '33; Secretary Commercial Club, '33.

SAM SHANKEL

Athletic Council, '32, '33; Manual Arts Club, '31.

SARAH SHELL

Girls' Hi-Y, '32, '33, '34; Glee Club, '31, '32; Alchemist Club, '34.

GEORGE SMALLING

Alchemist Club, '32; President Alchemist Club, '32; Oratory - Debating Club, '32; Varsity Debate, '32; Secretary Debating Club, '33; French Club, '32, '33; Manual Arts, '31; Band, '31, '32, '33, '34; All Students' Club Council, '33; Dramatics Club, '34; Athletic Council, '32.

GEORGE SMITH

Secretary Manual Arts, '34; Manual Arts, '33, '34; Alchemist Club, '32, '34; Commercial Club, '32, '33, '34.

JUNE SMITH

President Girls' Hi-Y, '33; Tennis Club, '32; Varsity Basketball, '27, '28, '29; Head Cheerleader, '32, '33, '34; Intra-Mural Council, '32, '33, '34; Secretary All Students' Club Council; Treasurer All Students' Club Council; Athletic Council, '31, '32, '33, '34; Treasurer Sophomore Class; Secretary Junior Class; President Athletic Council; V-President Freshman Class; Secretary Sophomore Class.



ELEANOR SOLOMON

Civics Club, '29; French Club, '31, '32;  
Commercial Club, '31, '32; Girls' Hi-Y,  
'33, '34; Glee Club, '29, '30, '31, '32;  
Athletic Council, '33.

EVELYN SOLOMON

French Club, '31, '32, '33; Girls' Hi-Y,  
'33, '34; Civics Club, '29; Speak Easy  
Club, '33, '34; Science Club, '33, '34;  
Commercial Club, '31, '32, '33.

IDA MAE STATZER

Science Club, '31, '32, '33, '34; Civics  
Club, '30, '31.

LEWIS STOCKTON

French Club, '32, '33; Manual Arts Club,  
'33; Alchemist Club, '32, '33; V-Presi-  
dent Alchemist Club, '33; Athletic Coun-  
cil, '32, '33; Dramatics Club, '32, '33,  
'34.

MILDRED STONE

Intra-Mural Council, '33; Secretary Ath-  
letic Council, '33; Secretary Alchemist  
Club, '31; Treasurer All Students' Club  
Council; Athletic Council, '31, '32, '33

ERNEST STULTZ

Public Speaking Club; Band; Manual Arts  
Club; Alchemist Club.

GRACE THOMAS

Commercial Club, '33, '34; Civics Club.

ELSIE WHITTAKER

Athletic Council, '32, '33; French Club,  
'32, '33, '34; Glee Club, '30, '31, '32,  
'33, '34; Cadmus Club, '33, '34.

MARJORIE WHITTAKER

Dramatics Club, '32, '33, '34; Alchemist  
Club, '32, '33; V-President Girls' Hi-Y,  
'34; Treasurer Freshman Class, '31; Ath-  
letic Council, '31, '32.

CLAUDIA WOODARD

Commercial Club, '32, '33, '34; Girls'  
Hi-Y, '34; Secretary Cadmus Club, '33,  
'34; French Club, '32; Treasurer Com-  
mercial Club, '33.

PAULINE YANCY

Alchemist Club, '33, '34; French Club,  
'33, '34.



# CLASSES



JUNIORS

Miss Haggard, Sponsor

Fall Term

James Ringley, President  
Frank Watson, Vice President  
Eloise Wyman, Secretary  
Catherine McGhee, Treasurer

Spring Term

Frank Watson, President  
Catherine Lynch, Vice President  
Edythe Webb, Secretary  
Evan Roberts, Treasurer

Andersen, Alex  
Anderson, Edith  
Arnold, Erma  
Baker, Ralph  
Bell, Lester  
Blackley, Louise  
Blevins, Charles  
Booher, Margaret  
Boy, Margaret  
Brown, Glenna Bell  
Buckles, Mary De  
Buckles, Ruth  
Byrd, Evelyn  
Caldwell, John  
Campbell, Bernard  
Cawood, Marion  
Childers, Frances  
Combs, Mildred  
Cowan, Charles  
Darter, Howard  
Eastridge, Dewey  
Faust, W. B.  
Fleenor, Earl  
Fleenor, Eugene  
Ford, Stanley  
Glover, Billy  
Hagan, Salome  
Harkleroad, Adrian  
Harr, Clifton  
Harr, Ruth  
Hart, Margaret  
Hawks, Georgie Lee  
Hicks, Kenneth  
Howard, Lafitte  
Hull, LeRoy  
Johns, Julia  
Johnston, Pollie  
Kelly, Margaret  
King, Clyde  
King, Hugh  
Latture, Ann  
Legg, Mildred  
Leslie, Joe  
Lindamood, Verna  
Loving, H. P.  
Love, H. L.  
Lynch, Catherine  
Martin, Elizabeth  
McGhee, Catherine  
McGhee, Barclay  
McNew, Charles

McNew, T. C.  
Miller, Eugene  
Moore, Hazel  
Moreland, Louise  
Morrell, William  
Neal, Billy  
Neel, Louise  
Owen, Buel  
Parks, Marguerite  
Pershing, Jeanette  
Phillippi, Virginia  
Phipps, Louis  
Poore, Leona  
Ray, Leola  
Repass, James  
Richards, Frances  
Ringley, James  
Roberts, Evan  
Rollins, Elizabeth  
Ross, Bella  
Rutherford, Ada  
Sells, Margaret  
Senter, Bradley  
Shankel, Virginia  
Shell, Anna Laura  
Shell, Dorothy  
Smith, Helen  
Snodgrass, Josephine  
Solomon, Dorothy  
Sparger, Jack  
Sparger, Ina  
Statzer, Iona  
Stauffer, Mary Jane  
Stickley, Jean  
Stophel, J. L.  
Swiney, Geneva  
Tankersley, W. S.  
Taylor, Mabel  
Thomas, Mary Virginia  
Trammel, George  
Vineyard, Glenn  
Watson, Frank  
Weaver, Margaret  
Webb, Edythe  
White, Thomas  
Whiteaker, Marie  
Wilkerson, James  
Williams, James  
Wolfe, Catherine  
Wood, Jane  
Wyman, Eloise



SOPHOMORES

Mr. Gillingham, Sponsor

Fall Term

Pollie Johnston, President  
Justin Orfield, Vice President  
Jean Stickley, Secretary  
Margaret Torbett, Treasurer

Spring Term

John Anderson, President  
Charles McClelland, Vice President  
Tom Ingram, Secretary  
Justin Orfield, Treasurer

Adams, A. C.  
Ager, Lewis  
Allison, James  
Anderson, John  
Ash, Margaret  
Ashley, Katherine  
Baird, Mary  
Baumgardner, Frances  
Beard, James  
Bell, Pat  
Bennett, William  
Boling, Mildred  
Boy, Louise  
Boyd, Mildred  
Braddock, David  
Brosius, Katherine  
Brown, Edith  
Caldwell, Melinda Ann  
Callahan, Elizabeth  
Carrier, Wallace  
Cass, Louis  
Cecil, Josephine  
Childress, Margaret  
Combs, Austin  
Covey, Frank  
Cross, Mary Lynn  
Cuddy, Ruby  
Davis, Jane  
Dougherty, Nell  
Driver, Russell  
Dutton, Elton  
Earhart, Etta  
Faidley, Catherine  
Fletcher, Eugene  
Fogarty, Thomas  
Furlow, Billy  
Francis, Gladys  
Godsey, Ivan  
Goodman, Farra  
Grayson, Stacy  
Greer, Pauline  
Hagy, Marvin  
Harkleroad, Helen  
Hawkins, Charles  
Hayes, Haskell  
Hayes, Mary Elizabeth  
Hicks, R. J.  
Hobbs, Vernon  
Hodge, Jane  
Hunt, Helen

Ingram, Tom  
Jarrett, Mary  
Johnson, Victor  
Jones, Helen  
Keesling, Gladys  
King, Nancy  
Koontz, Myrtle  
Lee, Mary  
Leslie, Evelyn  
Lewis, Earl  
Lewis, Edna  
Lowe, Earl  
Lowe, Evelyn  
Lowe, Haven  
Lowry, Chess  
Lowry, Mary Eleanor  
Massengill, Norman  
McClelland, Charles  
McClellan, Dorothy  
McCormick, Minnie  
Miller, Charles  
Moore, Margaret

Morrell, T. F.  
Morton, Ruth  
Morton, Ruth Mercer  
Myers, Mary Ellenor  
Neal, Mary Ruth  
Nidiffer, Fred  
O'Dell, Sam  
Odum, Margaret  
Orfield, Justin  
Owen, Gay  
Parrish, Virginia  
Peters, Frances  
Phipps, Beryl  
Phipps, Hugh Jr.  
Poe, Maxie  
Post, Rollin  
Rawn, Ruth  
Rhea, James  
Richard, Evelyn  
Richardson, Hampton  
Ringley, Lucille  
Roberts, Isabel  
Roberts, Louise  
Rutherford, Bruce  
Rutherford, Dorothy  
Russell, Evelyn  
Scherer, Britton  
Shinn, Elizabeth  
Shirreffs, Isabelle  
Smith, Hal  
Spargur, Ellen  
Stone, Ida  
Stone, Marion  
Swiney, Lucile  
Thomas, Elizabeth  
Thomas, Helen  
Thomas, John  
Thomas, Una  
Torbett, Margaret  
Wagner, Earl  
Weaver, Clare  
Weaver, Kenneth  
Whitaker, Sidney  
Whitaker, Mildred  
Whitaker, Robert  
Wilson, Edwin  
Wolfe, Mae  
Woolsey, Carol  
Wyatt, Mary Helen  
Wyman, George



FRESHMEN

Mrs. Ferguson, Sponsor

Fall Term

John Anderson, President  
Edwin Wilson, Vice President  
Fred King, Secretary  
Emma Kate Vance, Treasurer

Spring Term

James Shipley, President  
Charlotte Senter, Vice President  
Mary Ann Morison, Secretary  
Emma Kate Vance, Treasurer

Arrants, Margaret  
Babb, Mary Lynn  
Bains, Ernest  
Bains, Nora  
Baker, Eugene  
Barron, Evelyn  
Bibee, Florine  
Blackley, Dorothy  
Blades, William  
Blevins, Winford  
Booher, May Elizabeth  
Boy, Douglas  
Buckles, Ernest  
Burrow, Juliet  
Britt, Clyde  
Brown, George  
Brown, Marie  
Cardwell, Helen  
Cataldo, Angeline  
Clark, Johnyne  
Cole, D. Ensor  
Counts, Dorothy  
Counts, Edward  
Cowan, Benny  
Cowan, Charles  
Cowan, Robert  
Crafton, Christine  
Darter, Irene  
Delaney, Sarah  
Dix, William  
Dixon, Ralph  
Doriot, Edmond  
Dykes, Alexandria  
East, Charles  
Faivre, Alfred  
Fine, Claude  
Fleenor, Billy  
Fleenor, Christine  
Fogarty, Katherine  
Ford, Ernest  
Foster, Wade  
Franklin, Wray  
Frazier, Fred  
Frye, Leona  
Fulwider, Clarence  
Furse, Jenina  
Galliher, Tom  
Giesler, Anna  
Glover, Mildred  
Godsey, Alma

Graham, Vance  
Gray, Mildred  
Hagler, T. L.  
Hagy, Evelyn  
Hardin, W. C.  
Harkins, Louis  
Harr, Helen  
Hawkins, Jimmy  
Hayes, Ruby  
Helton, Mose  
Heninger, David  
Heninger, Donald  
Heninger, Elizabeth  
Heninger, Harold  
Hensley, Marguerite  
Hess, Gustave  
Hickam, Imogene  
Hicks, Paul  
Hogsett, Charles  
Holloway, Christine  
Horner, Lucille  
Hunt, Curtis  
Jones, Harold  
Kaylor, Arthur  
Kaylor, Virginia  
Kensinger, Janice  
Kensinger, Pauline  
Kelly, Robert  
Kesner, Clifford  
King, Fred  
King, James  
Kyle, Loraine  
Lambert, Edith  
Lane, Doris  
Lee, James  
Loggans, Carl  
Loving, Morgan  
Lunsford, Eileen  
Martin, Marie  
Malcolm, Tom  
McCary, William  
McClellan, Sherman  
McClistter, Cecil  
McCorkle, Elizabeth  
McCorkle, Walter  
McIntyre, George  
McNew, Ruth  
McReynolds, Troy  
Mercer, Clarence  
Moore, Ardis



FRESHMEN--Continued

Moore, James  
 Morison, Mary Ann  
 Morison, Kyle  
 Morris, Edythe  
 Morris, Haskell  
 Morris, Joe  
 Moss, Ben  
 Moyer, Louise  
 Neel, James  
 Newton, James  
 Parker, Alice  
 Patrick, Evangeline  
 Peltier, Mildred  
 Perry, Harry  
 Peters, Leona  
 Phelps, William  
 Phipps, Carl  
 Phipps, Harry  
 Phipps, J. C.  
 Powers, Dorothy  
 Purvine, Evelyn  
 Reed, Jimmy  
 Rhea, Grace  
 Richard, Marion  
 Richards, Carolyn  
 Riddle, Carolyn  
 Rogers, Sue  
 Rutherford, Golda  
 Rutherford, Woodrow  
 Sawyer, Lois  
 Sawyer, Louise  
 Sayles, Dorothy  
 Senter, Charlotte  
 Shipley, James  
 Shoaf, M. R.  
 Shuler, Helen  
 Shumaker, Howell  
 Sims, Ben  
 Slack, Munsey

Slagle, Janie  
 Smith, C. L.  
 Smith, Henry  
 Smith, Louise  
 Smith, Martha  
 Snapp, Margaret  
 Snodgrass, Henry  
 Sutherland, Evelyn  
 Sproles, Norman  
 Stansberry, Charles  
 Stophel, Mary Alice  
 Stultz, Earl  
 Swiney, Allen Jr.  
 Swiney, Carl  
 Thomas, Joseph  
 Thomas, Katherine  
 Thompson, Howard  
 Torbett, William  
 Tousley, Martha Anne  
 Vance, Emma Kate  
 Vance, George  
 Vance, Graham  
 Vance, Wilma  
 Vaught, Irene  
 Vires, A. C.  
 Wagner, Edna  
 Wallace, Robert  
 Wampler, Charles  
 Warren, Eleanor  
 Watkins, Sara  
 Wilson, Ray  
 Wilson, Ruby  
 Williams, Frances  
 Wolfe, Edna  
 Wolford, Herbert  
 Wolford, James  
 Wood, Henry  
 Young, Billy  
 Zory, Sam



SUB-FRESHMEN

Mr. McClelland, Sponsor

Fall Term

Fred Carrier, President  
Gerald Clark, Vice President  
Juanita Patrick, Secretary  
Benny Cowan, Treasurer

Spring Term

Jesse Hale, President  
Rowe Driver, Vice President  
Dorothy Rutherford, Secretary  
Billy Hagy, Treasurer

Abercrombie, Junior  
Ashley, Mary Lee  
Bachman, Agnes  
Bachman, Ruth  
Bains, Charles  
Baker, Charles  
Baumgardner, John  
Bourne, John  
Birdwell, Billy  
Blevins, Doris  
Blevins, Thelma  
Boggs, Rosalind  
Bondurant, Katheryn  
Boyd, Evelyn  
Brosius, Mary Helen  
Buckles, Walter  
Buckley, Edythe  
Cage, Roy  
Caldwell, Craig  
Calhoun, Duane  
Callahan, Ernestine  
Carrier, Fred  
Carrier, Carmack  
Carrier, Leon  
Carter, Bonnie  
Cassidy, Billy  
Cawood, James  
Childers, Pat  
Clark, Gerald  
Clayman, Julia  
Combs, Arthur  
Comerford, Billie  
Cooper, Ruth  
Counts, James  
Cowan, Conley  
Cowan, Jack  
Cowan, Robert  
Crawford, Ruth  
Crenshaw, Robert  
Crockett, Nelle  
Davis, Ted  
Denton, H. M.  
DeVault, Jane  
Droke, Lucille  
Driver, Rowe  
Dykes, Sam  
Everett, Fred  
Faidley, Jewell  
Fleming, Elizabeth  
Fogarty, Alice

Goodwin, Marjorie  
Gratz, Carolyn  
Gratz, James  
Gray, Catherine  
Gray, Jessie Lynn  
Greer, Jack  
Greer, Mary Dixie  
Grimes, Thelma  
Hagy, Billy  
Hagy, Brandon  
Hale, Jesse  
Harkins, Frank  
Harris, Lois  
Hawk, Elizabeth  
Hawk, Mabel  
Hawkins, Ada Lynn  
Henninger, Roy  
Hiles, Thompson  
Hodge, Etta Jane  
Hunigan, Lyle  
Jenkins, Jeanette  
Johnson, Charles  
Johnson, Hazel  
Johnson, Herbert  
Jones, Clarence  
Jones, Evelyn  
King, Katherine  
Laird, Howard  
Legg, George  
Leonard, Arnetta  
Lilley, Carmen  
Lockett, Robert  
Loggans, James  
Lowe, Delilah  
Mahoney, Adelaide  
Mann, Louise  
Marion, Lynn  
Marion, Margaret  
Mashburn, Dewey  
McBroom, Martha  
McCary, Vivian  
McClellan, Dorothy  
McCroskey, Edith  
McKamey, Kathryn  
McNew, Eloise  
Miller, Daniel  
Miller, Mildred  
Moreland, Haygood  
Moreland, Margaret  
Mottorn, Mary Alice



SUB-FRESHMEN--CONTINUED

Mottern, Wayne  
Neal, Walter  
Nye, Thelma  
Odum, Gladys  
Osborne, Zeb  
Patrick, Juanita  
Peters, Kathleen  
Phillipi, Margaret  
Post, Martha  
Powers, Hugh  
Pyle, Carolean  
Rader, Robert  
Richards, Mark  
Richardson, William  
Riddle, LaVerne  
Roberts, Eleanor  
Rogers, Olen  
Rutherford, Dorothy  
Scott, Olive  
Sells, Sibyl  
Seneker, Nancy  
Senter, John Paul  
Shelley, Howard  
Shelley, Roby Jr.  
Shepherd, Roberta  
Shipley, Hazel  
Sisler, Julian  
Smith, Billie Jean  
Smith, Gaynelle

Smith, Herbert  
Snodgrass, William  
Sproles, Mamie  
Stone, Eileen  
Stout, James  
Stout, Margaret  
Stover, Helen Francis  
Thomas, Billy  
Thomas, Charles  
Thomas, Susan  
Trammell, Lois  
Treadwell, Billy  
Trinkle, Mildred  
Vance, George  
Vance, Mary  
Vance, Naomi  
Vance, Rosena  
Vance, Verlie  
Wayland, Ann  
Weaver, Martin  
White, Denver  
White, Owen  
Whiteaker, Hazel  
Williams, Mary Francis  
Williams, Romulus  
Willis, Virginia  
Wolford, David  
Wood, Rogan  
Young, Ardella







# ATHLETICS





FOOTBALL SQUAD

Scores

Tennessee.....	33	Blountville.....	0
Tennessee.....	7	Emory and Henry Frosh.....	21
Tennessee.....	6	Erwin.....	0
Tennessee.....	6	Johnson City.....	23
Tennessee.....	6	Greeneville.....	25
Tennessee.....	0	Elizabethton.....	7
Tennessee.....	6	Mountain City.....	0
Tennessee.....	0	Kingsport.....	7
Tennessee.....	0	Virginia.....	28

LETTERMEN

James Shipley  
 R. J. Hicks  
 Kermit Lindamood  
 Herbert Marcy  
 Lewis Phipps  
 James Dalton  
 Herbert Cross, Captain  
 Charles McClelland  
 Joe Morris

Earl Lowe  
 Babe Roberts  
 Jimmy Reed  
 Cyril Coffey  
 Jack Cash  
 John Anderson  
 Carl Phipps  
 Lewis Harkins  
 Dan King, Manager



## FOOTBALL REVIEW

Football practice began on the first of September; and about fifty men answered Coach Elmore's call for candidates. Among these were eight monogram wearers from the previous year. Despite this handicap, there were many who proved their worth before many games were over. Every fellow began at once to prepare himself for the hard season that was ahead of us, not knowing what to expect from our opponents.

We played our first game September 15 with Blountville, and after a hard day we came out with the big end of a 33-0 score.

On the twenty-second of September we met the highly tutored Emory-Freshmen team, and we lost a hard fight 21-7.

Next came Erwin on September 29. Our team was greatly crippled, but we nosed out the strong Erwinites 6-0.

On the thirteenth of October, after resting over a week because of an open date, we journeyed to Johnson City, and we were completely outplayed and lost by a score of 23-6.

Next in line on the twentieth of October we met Greeneville here. They sprang a great surprise on us, and we were defeated 25-6.

After Greeneville came the Elizabethton game at Elizabethton. We will all remember this game (especially Dan). It was a great game, and we should have won but Lady Luck thought otherwise. Score: Tennessee 0--Elizabethton 6.

The following Friday, Tennessee High rose to its heights to defeat a great Mountain City team 6-0.

Kingsport invaded Bristol on the night of November 10. With bands playing, they stormed out on the field and took us to town for a 6-0 count. Nevertheless, it was a great game and will always be remembered.

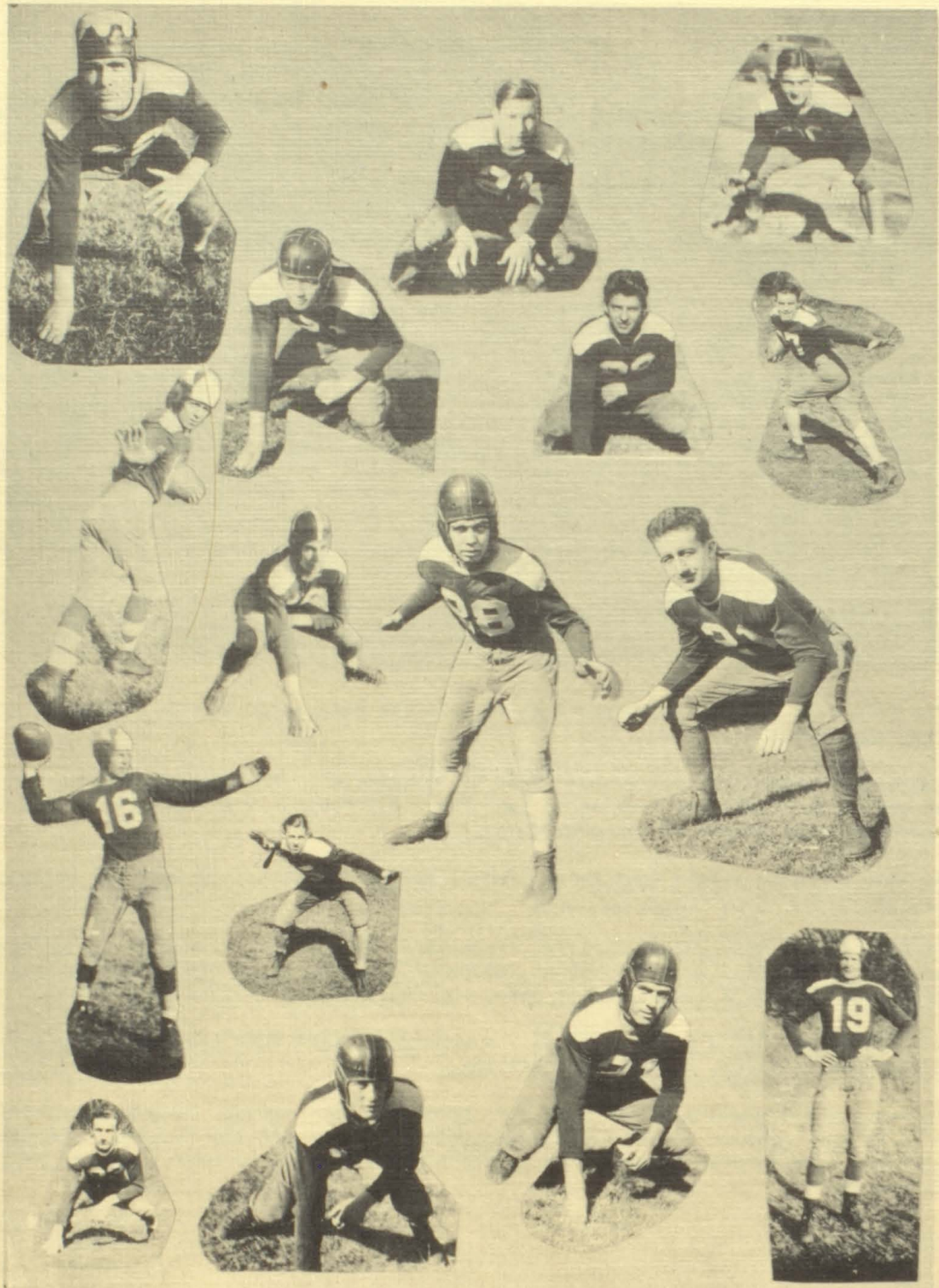
We then began to settle down to hard work, forget our past, and think of nothing but Virginia High.

Finally the eventful night arrived. The stands were packed with hundreds of enthusiastic fans. After an early threat, we never came within scoring range and were defeated 28-0. It was a tough game to lose, but every one took it in fine spirit.

Our season was not a great success. A number of games were lost, but we always won in the game of clean, honest, hard playing.

In January the members of the team were honored by the annual banquet sponsored by the P. T. A. Letters were awarded to seventeen players and the manager. Charles McClellan and John Anderson were named to captain the Vikings in 1934. Luck to you, Charles and John!









LETTERMEN

C. Phipps  
 D. Peoples  
 J. Orfield, Captain  
 F. Nidiffer  
 H. Marcy  
 B. Boyd



James W. Elmore, Coach

J. Dalton  
 H. Roberts  
 F. Covey, Manager  
 J. C. Phipps  
 E. Roberts  
 M. Furlow



## BASKET BALL REVIEW

Graduation played havoc with the Tennessee basket ball squad. Coach Elmore had only three or four experienced lettermen on which to build his team. These were led by Captain Orfield. Practice was held at the Y. M. C. A. during our long vacation.

School began and regular practice was resumed under the able instruction of Acting Coach Gillingham substituting for Coach Elmore who was stricken with appendicitis during vacation.

We opened with Gate City, took them into camp by a large score. Next we played Mountain City. This game also went our way by a big score. After the Mountain City game we journeyed to Elizabethton. There luck was again in our favor, and we won 32 to 21.

Coach Elmore returned to school and took over his position, finding that Coach Gillingham had nobly filled his shoes. After a week of practice, we went to Johnson City and won another game by a ten point lead.

The next Friday night, we played Elizabethton at home and again defeated them. Next in line came Holston. This game was won by a three point margin. After Holston we caught Johnson City for a return engagement, and again defeated them 28-17.

After Johnson City, we entertained Cove Creek in our gym and in turn came out ahead 52-14.

Examinations started, and every one was scared stiff. We went to Gate City and came within an ace of getting trimmed. At the final whistle, we were leading by three points.

The team suffered a severe loss in J. C. Phipps, stellar guard, who was declared ineligible after exams, but his place was taken by ex-captain Bill Boyd, who returned to school the new term.

We lost a close game to Erwin and the following night lost another to Kingsport. We then journeyed to Erwin and lost another to the Snyder Boys.

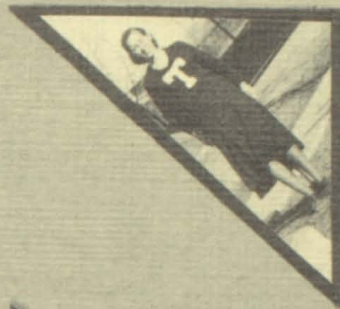
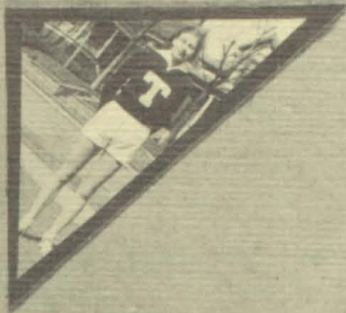
After Erwin, we met Virginia High and lost the first of the city series games by six points.

Next came Kingsport in the Tennessee gym. Again we were losers by a close score.

The second game of the city series was played in our gymnasium, and the Vikings lost the city championship for the first time in years. The score was, Virginia 28--Tennessee 24.

In the East Tennessee Tournament held at Kingsport this year, we defeated Mountain City and Happy Valley, being eliminated by Bluff City in the quarter finals.





WOLFE  
 WYMAN  
 SMITH  
 HARKLEROAD



HART  
 SHELL  
 NEEL  
 RUTHERFORD



# LETTER GIRLS





JUNIOR-SENIOR VOLLEY BALL



DOROTHY SHELL  
HORSESHOE PITCHING



EILEEN STONE  
INDIVIDUAL  
RACES



JUNIOR-SENIOR KICK BALL



MISS GALSARD  
COACH



CATHERINE WOLFE  
FOUL PITCHING



JUNIOR BASKETBALL



## GIRLS' ATHLETIC REVIEW

Under the able supervision of our coach, Miss Kathryn Grisard, the intra-mural program has again proved successful.

Girls' athletics started off with plenty of keen competition between individual class teams. Kick-ball headed the list of games to be played. It was a close race between the Sophomore team and the Junior-Senior team. However, the Junior-Senior team, captained by Dot Shell, outplayed the Sophomores and won the tournament.

Immediately following the kick-ball season, we began to prepare for the volleyball tournament. Then came our long vacation and during that time we played the volleyball tournament. Again, the combined Junior-Senior team went over the top with Beulah Witt acting as captain. The Sophomores won second place.

On our return to school in January, we started practicing basket-ball. This was our most interesting season, and many "would be" stars reported to the gym for practice. We played an elimination tournament in which the Juniors led, with Eloise Wyman acting as their captain. The Seniors won second place.

Catherine Wolfe, Junior, shot at the stars in the sky and won the foul-pitching tournament with Margaret Hart, Sophomore, coming in as a close second.

The indoor relay carnival was held in our gymnasium with the Sophomore team winning first place. In the individual races Eileen Stone, sub-freshman, was victor.

In the near future the teams will compete in horseshoe-pitching, stunts, tennis, base-ball, and track. There is plenty of good material to work with in the classes, and the games promise to be plenty exciting. May the best teams win.

The preparations are now being made for the May Day program and Field Day. These will be combined this year, and we are promised some first-class entertainment.

The girls who are working for letters are looking forward to the banquet which is to be given in their honour.

### INTRA-MURAL LINE-UPS

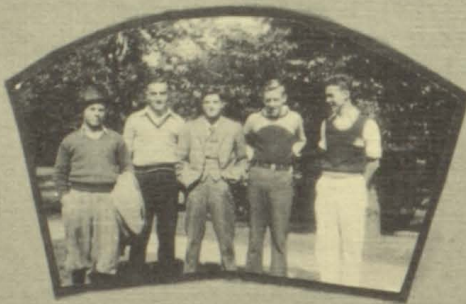
Junior-Senior Kick-ball Team  
Dorothy Shell, Captain  
Kathleen Rutherford, Manager  
Marjorie Poe  
Eloise Wyman  
Anna Laura Shell  
Catherine Wolfe  
Beulah Witt  
Mary Brown

Junior Basket-ball Team  
Eloise Wyman, Captain  
Anna Laura Shell, Manager  
Hazel Moore  
Dorothy Shell  
Catherine Wolfe  
Glenna Brown  
Evelyn Byrd

Junior-Senior Volley-ball Team  
Beulah Witt, Captain  
Marjorie Poe, Manager  
Dorothy Shell  
Hazel Moore  
Eloise Wyman  
Anna Laura Shell  
Kathleen Rutherford  
Catherine Wolfe  
Katherine Eversole  
Mary Brown

Sophomore Relay Team  
Helen Hunt  
Tubby Stone  
Ruth Morton  
Margaret Moore  
Helen Harkleroad







# CLUBS





BOYS' HI-Y CLUB

Mr. Eggers, Faculty Adviser  
Eugene Thompson, Sponsor

Fall Term

James Wolford, President  
Harold Roberts, Vice President  
James Ringley, Secretary and  
Treasurer  
Edwin Powers, Sergeant-at-Arms

Andersen, Alex  
Barron, John  
Boy, Reeve  
Cowan, Taylor  
Cross, Herbert  
Dougherty, James  
Dulaney, Fred  
Furlow, Mack  
King, Hugh  
Marcy, Herbert  
McClellan, Charles

Spring Term

James Ringley, President  
Frank Watson, Vice President  
Kelly McKee, Secretary and  
Treasurer  
James Wolford, Sergeant-at-Arms

McKee, Kelly  
Moss, Norman  
Peoples, David  
Powers, Edwin  
Ringley, James  
Roberts, Harold  
Rollins, Edward  
Swiney, Edgar  
Watson, Frank  
Wilkerson, James  
Wolford, James





ALL STUDENTS' CLUB COUNCIL

Mr. Eggers, Sponsor

Fall Term

Mack Furlow, President  
 Edwin Powers, Vice President  
 Margaret Huff, Secretary  
 June Smith, Treasurer

Spring Term

James Wolford, President  
 Mack Furlow, Vice President  
 June Smith, Secretary  
 Margaret Huff, Treasurer

Baker, Helen  
 Boy, Reeve  
 Braddock, David  
 Byrd, Evelyn  
 Furlow, Mack  
 Huff, Margaret  
 Johnston, Pollie  
 King, Hugh  
 Leslie, Robert  
 O'Dell, Carl

Peoples, David  
 Powers, Edwin  
 Richards, Frances  
 Ringley, James  
 Roberts, Evan  
 Rollins, Edward  
 Smalling, George  
 Smith, June  
 Whittaker, Marjorie  
 Wolford, James





GIRLS' HI-Y CLUB

Mrs. Marney, Sponsor

Fall Term

June Smith, President  
 Mitchell Allen, Vice President  
 Katherine Eversole, Secretary  
 Gaynelle Combs, Treasurer

Allen, Mitchell  
 Arnold, Mildred  
 Ashley, Mary  
 Baker, Helen  
 Blades, Martha  
 Combs, Alice  
 Combs, Gaynelle  
 Doriot, Catherine  
 Gurley, Virginia  
 Marshall, Linda  
 Millard, Irma  
 Moreland, Louise

Spring Term

Ethel Riordan, President  
 Marjorie Whittaker, Vice President  
 Catherine Doriot, Secretary  
 Ida Rutherford, Treasurer

Painter, Carrie  
 Riordan, Ethel  
 Rollins, Elizabeth  
 Shell, Sarah  
 Smith, June  
 Snodgrass, Josephine  
 Solomon, Eleanor  
 Solomon, Evelyn  
 Webb, Edythe  
 Whittaker, Marjorie  
 Wolfe, Catherine  
 Wood, Jane

Wyman, Eloise





DRAMATICS CLUB

Mr. Gillingham, Sponsor

Fall Term

Marjorie Whittaker, President  
 Margaret Huff, Vice President  
 Julia Johns, Secretary  
 Edward Rollins, Treasurer

Allison, J. R.  
 Baker, Helen  
 Blades, Martha  
 Booher, Margaret  
 Caldwell, Alice  
 Caldwell, Melinda Ann  
 Combs, Gaynelle  
 Darter, Irene  
 Doriot, Catherine  
 Dougherty, Nell  
 Faust, W. B.  
 Hawkins, Elizabeth  
 Huff, Margaret  
 Johns, Julia  
 Latture, Ann

Lee, Mary  
 Leslie, Robert  
 Marshall, Linda  
 Mattox, Willie Joe  
 McGhee, Catherine  
 McKee, Kelly  
 Morton, Ruth  
 O'Dell, Edith  
 Peltier, Mildred  
 Peoples, David

Spring Term

David Peoples, President  
 Margaret Booher, Vice President  
 Edythe Webb, Secretary  
 Marjorie Whittaker, Treasurer

Roberts, Louise  
 Rollins, Edward  
 Rollins, Elizabeth  
 Rutherford, Ada  
 Snodgrass, Josephine  
 Spargur, Ellen  
 Statzer, Iona  
 Stickley, Jean  
 Swiney, Lucile  
 Torbett, Margaret  
 Tousley, Martha Anne  
 Vance, Emma Kate  
 Webb, Edythe  
 Whittaker, Marjorie  
 Wood, Jane





INTRA-MURAL COUNCIL

Miss Grisard, Sponsor

Kathleen Rutherford, Manager

Byrd, Evelyn  
Eversole, Katherine  
Harkleroad, Helen  
Hart, Margaret  
Holloway, Christine  
Jenkins, Jeanette  
Morton, Ruth  
Neel, Louise  
Rutherford, Kathleen  
Shell, Dorothy  
Shuler, Helen  
Smith, Helen  
Wolfe, Catherir  
Wyman, Eloise





CIVICS CLUB

Mrs. Ferguson, Sponsor

Fall Term

Kenneth Weaver, President  
 Fred King, Vice President  
 Nell Dougherty, Secretary  
 Jimmy King, Treasurer

Spring Term

Jenina Furse, President  
 George McIntyre, Vice President  
 Emma Kate Vance, Secretary  
 Tom Malcolm, Treasurer

Ashley, Katherine  
 Baker, Eugene  
 Burrow, Juliet  
 Clark, Johnyne  
 Combs, Austin  
 Covey, Frank  
 Crafton, Christine  
 Darter, Irene  
 Dougherty, Nell  
 Barnhart, Etta  
 Faidley, Katherine  
 Furse, Jenina  
 Holloway, Christine  
 Johnson, Victor  
 Kensinger, Janice

Kesner, Clifford  
 King, Bob  
 King, Fred  
 Kyle, Loraine  
 Lowry, Eleanor  
 Malcolm, Tom  
 McIntyre, George  
 McCary, Leola  
 McClister, Cecil  
 McCorkle, Elizabeth  
 McNew, Ruth  
 Morison, Kyle  
 Morris, Edythe

Myres, Ellenor  
 Poe, Maxie  
 Purvine, Evelyn  
 Roberts, Isabel  
 Shuler, Helen  
 Snapp, Margaret  
 Stone, Ida  
 Torbett, Billy  
 Vance, Emma Kate  
 Vance, Graham  
 Weaver, Kenneth  
 Weaver, Margaret  
 Wolfe, Edna  
 Woolsey, Carol  
 Wyman, George





MAROON AND WHITE

Editorial Staff

Edward Rollins.....Editor-in-Chief  
 Robert Leslie.....Associate Editor  
 Miss Bess Broce.....Faculty Advisor

News Staff

Fred Dulaney, Taylor Cowan, Julia Johns, Hal Smith.....News Writers  
 Mack Furlow.....Sports Editor  
 Alex Andersen.....Assistant Sports Editor  
 Eloise Wyman.....Girls' Sports Editor  
 David Peoples, James Williams, Lafitte Howard,  
 Tom Ingram, Frances Childers.....Feature Writers  
 Marjorie Whittaker.....Personal Editor  
 Mabel Taylor.....Alumni Editor  
 Mary Lee.....Joke Editor  
 Charlotte Senter.....Literary Editor  
 Margaret Hart.....Exchange Editor

Secretarial Staff

David Braddock.....Business Manager  
 Ida Rutherford, Ethel Riordan, Hazel Moore, Mildred Arnold.....Typists





ALCHEMIST CLUB

Miss Smith, Sponsor

Fall Term

George Smalling, President  
 Lewis Stockton, Vice President  
 Ida Rutherford, Secretary and  
 Treasurer

Arbuckle, Betty  
 Arnold, Elizabeth  
 Ash, Hugh  
 Barr, Martha  
 Booher, Margaret  
 Boy, Reeve  
 Buckles, Ruth  
 Byrd, Evelyn  
 Caldwell, Alice  
 Caldwell, John  
 Campbell, Bernard  
 Cawood, Marion  
 Cowan, Charles  
 Dougherty, James  
 Driver, Russell

Fine, Kenneth  
 Gurley, Virginia  
 Hawkins, Charles  
 Hicks, Kenneth  
 Massengill, Norman  
 McGhee, Barclay  
 McGhee, Catherine  
 McNew, Charles  
 Miller, Eugene  
 Moreland, Louise  
 Riordan, Ethel  
 Rutherford, Ada  
 Rutherford, Ida  
 Shankel, Virginia

Spring Term

Reeve Boy, President  
 Barclay McGhee, Vice President  
 Ethel Riordan, Secretary and  
 Treasurer

Smalling, George  
 Smith, George  
 Snodgrass, Josephine  
 Solomon, Evelyn  
 Sparger, Jack  
 Statzer, Ida Mae  
 Statzer, Iona  
 Stockton, Lewis  
 Stultz, Ernest  
 Webb, Edythe  
 Whiteaker, Marie  
 Whittaker, Sidney  
 Wilson, Pearle  
 Wood, Jane  
 Yancy, Pauline





ATHLETIC COUNCIL

Miss Owen, Sponsor

Fall Term

Evan Roberts, President  
 Kathleen Rutherford, Vice President  
 Mildred Stone, Secretary and Treasurer

Burrow, Judy  
 Dougherty, James  
 Graham, Vance  
 Hagan, Salome  
 Hawkins, Elizabeth  
 Holloway, Christine  
 Howard, Lafitte  
 King, Hugh  
 King, Nancy  
 McClellan, Sherman  
 Poe, Marjorie  
 Post, Rollin

Roberts, Evan  
 Rutherford, Kathleen  
 Shankel, Sam  
 Smith, Helen  
 Smith, June  
 Solomon, Eleanor  
 Stockton, Lewis  
 Stone, Mildred  
 Williams, Frances  
 Williams, Mary Frances  
 Williamson, James  
 Witt, Beulah





FRENCH CLUB

Miss Dryden, Sponsor

Fall Term

Evelyn Byrd, President  
 Ruth Buckles, Vice President  
 Mildred Legg, Secretary  
 Taylor Cowan, Treasurer

Arnold, Erma  
 Barker, Helen  
 Boy, Margaret  
 Buckles, Ruth  
 Byrd, Evelyn  
 Caldwell, John  
 Cappel, Peggy  
 Cowan, Taylor  
 Dulaney, Fred  
 Eversole, Katherine  
 Hagan, Salome  
 Hicks, Kenneth  
 Kensinger, Frances  
 King, Hugh

Spring Term

Catherine Lynch, President  
 Eloise Wyman, Vice President  
 Louise Neal, Secretary and  
 Treasurer

Legg, Mildred  
 Loving, H. P.  
 Lynch, Catherine  
 Lynch, Martin  
 Martin, Elizabeth  
 Moreland, Louise  
 Neal, Louise  
 Phipps, Beryl  
 Repass, James  
 Smalling, George  
 Stockton, Lewis  
 Whittaker, Elsie  
 Wolford, James  
 Yanoy, Pauline





MANUAL ARTS CLUB

Mr. Burns, Sponsor

Fall Term

Reeve Boy, President  
 James Wilkerson, Vice President  
 Charles Hawkins, Secretary and  
 Treasurer

Boy, Reeve  
 Britt, Clyde  
 Darter, Howard  
 Hawkins, Charles  
 Kaylor, Burdette  
 Lindamood, Kermit  
 McNew, T. C.  
 O'Dell, Sam  
 Phipps, Hugh

Spring Term

James Wilkerson, President  
 Glenn Vineyard, Vice President  
 George Smith, Secretary  
 Charles Hogsett, Treasurer

Phipps, Louis  
 Ringley, James  
 Smith, George  
 Stockton, Lewis  
 Swiney, Edgar  
 Vineyard, Glenn  
 Watson, Frank  
 Wilkerson, James  
 Wolford, James





COMMERCIAL CLUB

Mrs. Koltinsky, Sponsor

Fall Term

Carl O'Dell, President  
 Ada Rutherford, Vice President  
 Betty Arbuckle, Secretary  
 Claudia Woodard, Treasurer

Spring Term

Hazel Moore, President  
 Elizabeth Arnold, Vice President  
 Leola Ray, Secretary  
 Ruth Emmert, Treasurer

Arbuckle, Betty  
 Arnold, Elizabeth  
 Barker, Helen  
 Bell, Custis  
 Cash, Jack  
 Emmert, Ruth  
 Fine, Kenneth  
 Mattox, Willie Joe  
 O'Dell, Carl

O'Dell, Edith  
 Ray, Leola  
 Rutherford, Ada  
 Smith, George  
 Solomon, Eleanor  
 Statzer, Iona  
 Thomas, Grace  
 Wilson, Pearle  
 Woodard, Claudia





DEBATING CLUB

Mr. Burns, Sponsor

Fall Term

Robert Leslie, President  
 Mack Furlow, Vice President  
 George Smalling, Secretary  
 Hal Smith, Treasurer

Spring Term

Hugh Ash, President  
 Robert Leslie, Vice President  
 Thomas White, Secretary  
 Hal Smith, Treasurer

Andersen, Alex  
 Ash, Hugh  
 Furlow, Mack  
 Leslie, Robert  
 Rhea, James  
 Scherer, Britton  
 Smalling, George  
 Smith, Hal  
 White, Thomas





SPEAK EASY CLUB

Miss Nininger, Sponsor

Fall Term

Edwin Powers, President  
 Joe Leslie, Vice President  
 Edna Lewis, Secretary  
 David Braddock, Treasurer

Spring Term

Alex Andersen, President  
 Joe Leslie, Vice President  
 Edna Lewis, Secretary  
 David Braddock, Treasurer

Andersen, Alex  
 Ash, Hugh  
 Beard, James  
 Braddock, David  
 Burrow, Judy  
 Campbell, Bernard  
 Carrier, Wallace  
 Driver, Russell  
 Galliher, George  
 Graham, Bruce  
 Grayson, Stacy  
 Kesner, Clifford  
 Leslie, Joe  
 Lewis, Edna

Graham, Vance, Honorary Member  
 McIntyre, George, Honorary Member

Lowe, Haven  
 Massengill, Norman  
 McGhee, Barclay  
 McNew, Charles  
 Millard, Irma  
 Post, Rollin  
 Powers, Edwin  
 Rhea, James  
 Rutherford, Edith  
 Smith, Hal  
 Solomon, Evelyn  
 Watson, Frank  
 White, Thomas  
 Whiteaker, Marie





BAND

Mr. Cataldo, Conductor

Adams, Sonny  
 Baker, Eugene  
 Boy, Reeve  
 Brown, George  
 Carrier, Wallace  
 Cataldo, Angeline  
 Cowan, Taylor  
 Cross, Clayton  
 Driver, Rowe  
 Driver, Russel  
 Faust, W. B.  
 Fleming, Billy  
 Ford, Ernest  
 Hawkins, Charles

Hayes, Mary Elizabeth  
 Hicks, Kenneth  
 Jones, Helen  
 King, Jimmie  
 Leslie, Robert  
 Logan, Jack  
 Lowe, Evelyn  
 Lowe, Haven  
 Massengill, Norman  
 McClister, Cecil  
 McGee, Carl  
 Miller, Charles  
 Moore, James  
 Peoples, Orah

Phipps, Beryl  
 Post, Rollin  
 Repass, James  
 Richardson, Hamp  
 Scherer, Britton  
 Sisler, Julian  
 Smalling, George  
 Smith, Hal  
 Thomas, Joe  
 Whitaker, Sidney  
 Wolford, James  
 Wolford, James Jr.  
 Wolford, Dave  
 Wynnan, George





Y'S AND OTHER Y'S CLUB

Alice Combs, Sponsor

Fall Term

Frances Richards, President  
 Virginia Parrish, Vice President  
 Lucille Ringley, Secretary  
 Una Thomas, Treasurer

Spring Term

Lucille Ringley, President  
 Mary Jarrett, Vice President  
 Virginia Parrish, Secretary  
 Elizabeth Shim, Treasurer

Brown, Glenna Bell  
 Cawood, Marion  
 Davis, Jane  
 Earhart, Etta  
 Furse, Jenina  
 Harkleroad, Helen  
 Hunt, Helen  
 Jarrett, Mary  
 King, Nancy  
 Parrish, Virginia  
 Phillippi, Virginia  
 Richards, Frances  
 Ringley, Lucille  
 Shinn, Elizabeth  
 Swiney, Geneva  
 Thomas, Mary Virginia  
 Thomas, Una





GLEE CLUB

Mrs. Hayes, Director

Mrs. Marney,  
Sponsors  
Miss Nininger

Fall Term

Hugh King, President  
Mitchell Allen, Vice President  
Edythe Webb, Secretary  
Mary Ann Morison, Treasurer  
Catherine Wolfe, Librarian  
Charles McClelland, Sergeant-at-Arms

Charles Hawkins, President  
Catherine Wolfe, Vice President  
Eloise Wyman, Secretary  
Catherine Lynch, Treasurer  
Catherine Wolfe, Librarian  
Hugh King, Sergeant-at-Arms

Allen, Mitchell  
Allison, J. R.  
Ash, Hugh  
Barron, Evelyn  
Bibee, Florine  
Blackley, Louise  
Bocher, Margaret  
Boy, Margaret  
Buckles, Ruth  
Carrier, Wallace  
Coffey, William

Combs, Austin  
Cross, Mary Lynn  
Darter, Irene  
Delaney, Sara  
Earhart, Etta  
Faust, W. B.  
Fleenor, Christine  
Ford, Stanley  
Franklin, Louise  
Graham, Bruce  
Hagan, Salome



Hagy, Evelyn  
Hawkins, Charles  
Hawkins, Elizabeth  
Hayes, Mary Elizabeth  
Hicks, R. J.  
Holloway, Christine  
Jarrett, Mary  
Jones, Helen  
Kensinger, Janice  
Kesner, Clifford  
King, Hugh  
Legg, Mildred  
Leslie, Joe  
Lowe, Delilah  
Lynch, Catherine  
Marshall, Linda  
McClelland, Charles  
McNew, Charles  
Moreland, Louise

Wyman, Eloise

Morison, Mary Ann  
Neel, Louise  
Painter, Carrie  
Parks, Marguerite  
Peltier, Mildred  
Phipps, Beryl  
Phipps, Hugh  
Repass, James  
Roberts, Evan  
Rogers, Sue  
Rollins, Elizabeth  
Sims, Ben  
Shuler, Helen  
Swiney, Lucille  
Watkins, Sarah  
Webb, Edythe  
Whittaker, Elsie  
Whittaker, Junior  
Wolfe, Catherine



# AUTOGRAPH



