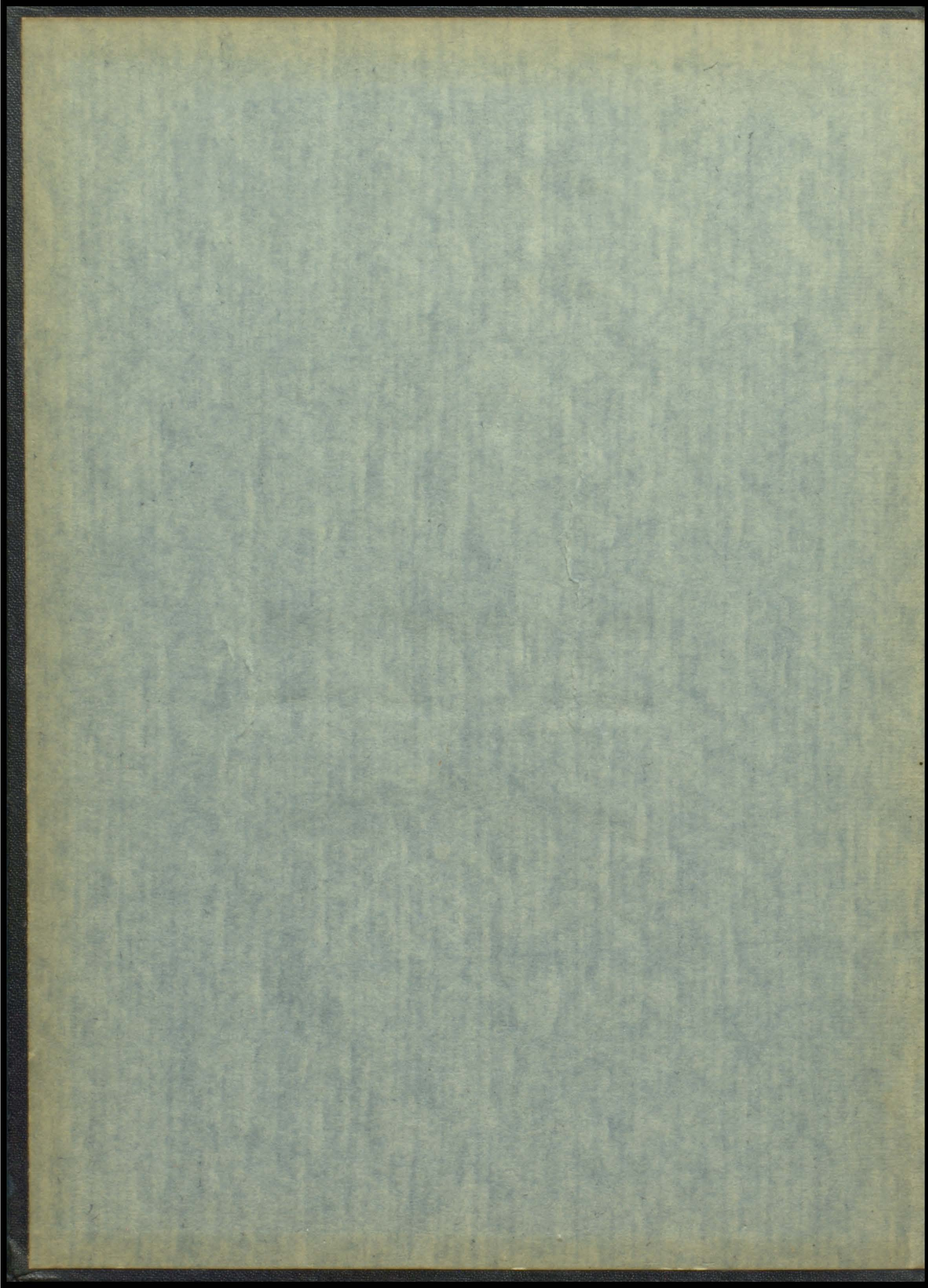


THE  
CADMEA  
1932





EX LIBRIS

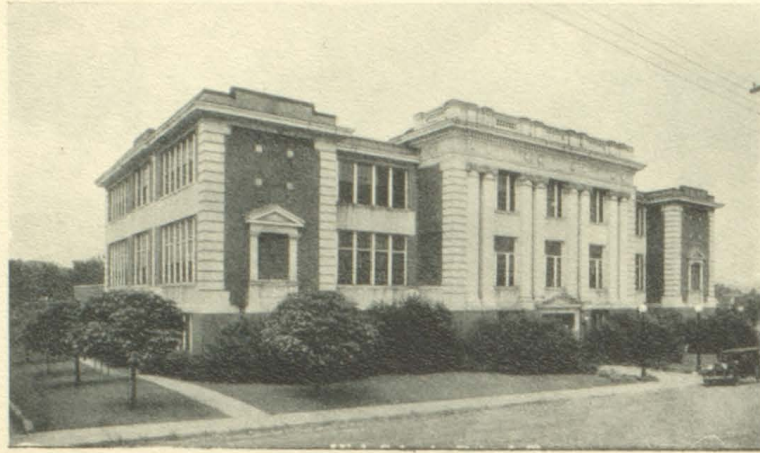
# THE CADMEA

1932



ROBERT L. LADD  
*Faculty Adviser*

*Published by*  
**THE CADMUS CLUB**  
BRISTOL TENNESSEE HIGH SCHOOL

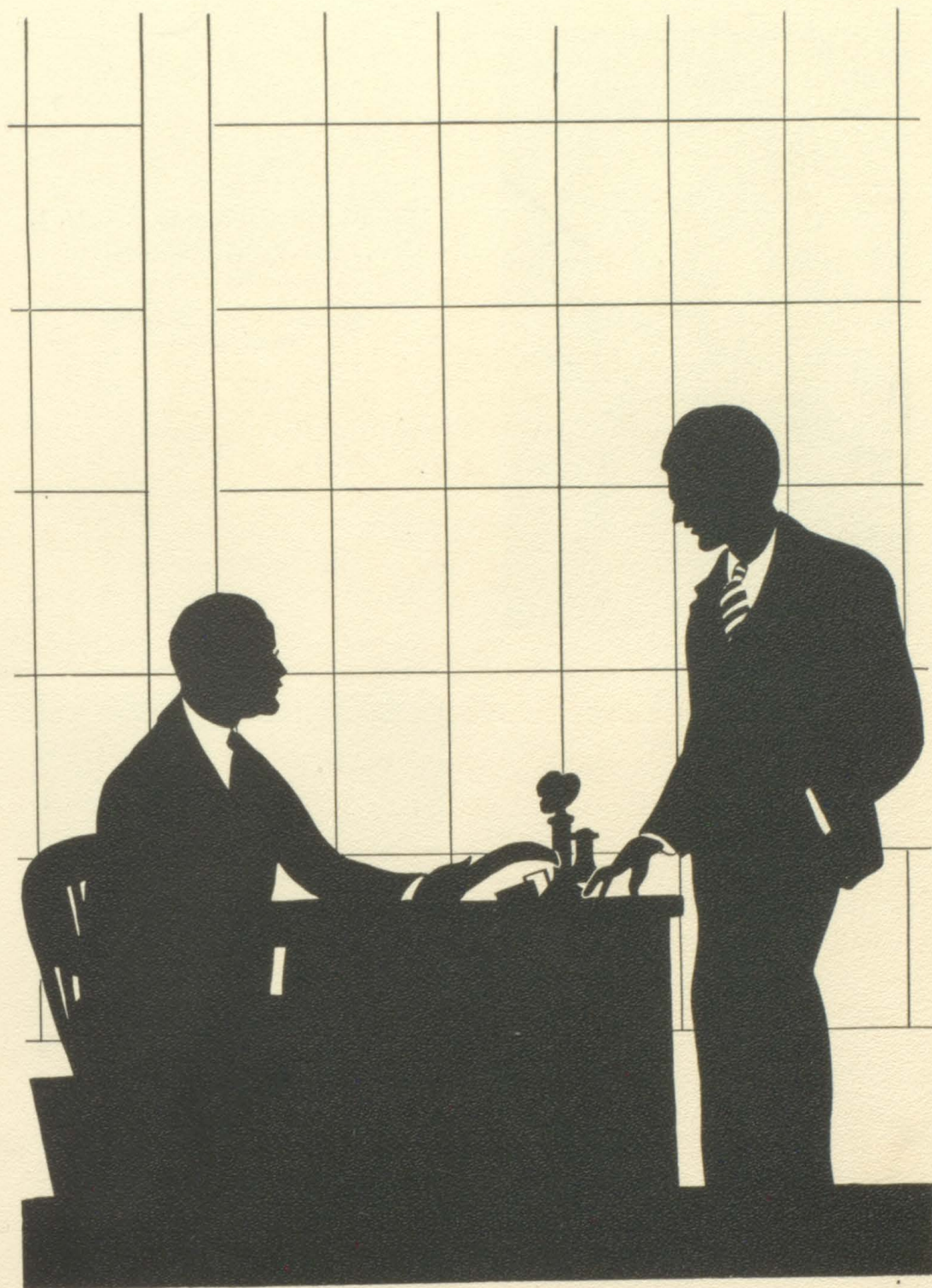


## *Dedication*

---

*WE, the Senior Class of 1932, do hereby dedicate our CADMEA to the future Seniors of Tennessee High School, believing that they will uphold the high standards of scholarship, loyalty, and sportsmanship set by those who have gone before, and that they will ever keep before them our school motto, "Excelsior."*





FACULTY



RALPH BURTON RUBINS, B. A., M. A.

Ohio Wesleyan University  
University of Chicago

*Superintendent of Public Instruction  
Bristol, Tennessee*

THOMAS HENRY TYLER, B. S.  
Princeton University  
East Tennessee State Teachers' College  
*Principal Tennessee High School*



## Faculty

FAN LIN BAUMGARDNER  
Bristol Commercial College  
East Tennessee State Teachers' College  
Columbia University  
Registrar

BESS BROCE  
Sullins College  
English

GENEVIEVE RICE CALDWELL  
B. S., University of Tennessee  
English

HALLIE HOUSTON CARSON  
A. B., Emory and Henry College  
A. B. in L. S., Emory University  
Librarian

ROSARIO CATALDO  
Naples College, Naples, Italy  
Band Director

ANNIE NEELD DRYDEN  
A. B., University of Tennessee  
French and Algebra

ISAAC DELANEY EGGERS  
B. S., East Tennessee State Teachers' College  
Graduate Work, University Tennessee  
Industrial Arts

CHARLES LINLEY FARTHING  
A. B., Carson-Newman College  
University of North Carolina  
English

CELIA FEINSTEIN  
A. B., Mississippi State College for Women  
Typewriting

ELIZABETH HICKS FERGUSON  
B. S., Peabody College  
East Tennessee State Teachers' College  
Civics

GEORGE GARDNER GILLINGHAM  
A. B., Maryville College  
Graduate Work, University Tennessee  
Economics and History

KATHRYN ANN GRISARD  
B. S., University Tennessee  
Tennessee College, Murfreesboro, Tenn.

ZONA WILSON HAGGARD  
B. S. in H. Ec., University Tennessee  
Home Economics

MRS. RICHARD HAYES  
B. A., University Tennessee  
Instructor in Public School Music

MARTHA VIOLA HODGES  
B. S. in H. Ec., University Tennessee  
Home Economics  
Junior Business Training

CULLEY JAMES  
A. B., University of Richmond  
Graduate Work, Columbia University  
History

VERLIE COFFMAN KOLTINSKY  
A. B., Bowling Green College of Commerce  
Western Kentucky Teachers' College  
Commercial Education

ROBERT LEE LADD  
B. A., Carson-Newman College  
M. A., Peabody College for Teachers  
Vanderbilt University  
Latin

ANNA BELLE LYNN  
B. A., Rogersville Synodical College  
Sullins College  
Junior Mathematics

MARY RUCKER MARNEY  
State Teachers' College, Farmville, Va.  
Emory and Henry College  
East Tennessee State Teachers' College  
Junior English and Mathematics

FRANCES REVELEY OWEN  
A. B., Emory and Henry College  
Sullins College  
Randolph-Macon Woman's College  
Columbia University  
Mathematics

EVERETT LEE ROWE  
B. S., Western Kentucky Teachers' College  
Physics

DELLE DULANEY SMITH  
B. S., University Tennessee  
M. S., University Virginia  
Chemistry and Biology

WILLIAM NEIL TARTAR  
Lincoln Memorial University  
East Radford State Teachers' College  
Junior Science

HARRY JAMES THAYER  
B. S., University Tennessee  
Physical Education

MARIE CUSTINE WINGFIELD  
A. B., Emory and Henry College  
History and Latin



JUNE ALLEN  
 EDITOR-IN-CHIEF

KATHERINE KESNER  
 BUSINESS MANAGER

AUGUSTA LEE BEIDLEMAN  
 SECRETARY

SARAH HAMLET  
 ASSISTANT EDITOR

RICHARD RESER  
 ASS'T BUSINESS MANAGER

GENEVIEVE CALDWELL  
 ART EDITOR

KATHERYNE WOOLSEY  
 SNAPSHOT EDITOR

JOHN HUGHLETT  
 PHOTOGRAPH EDITOR

JACK BARKER  
 ATHLETIC EDITOR

MARY KEESLING  
 ATHLETIC EDITOR

ELIZABETH BOOHER  
 LITERARY EDITOR

MARY CLARDY  
 LITERARY EDITOR

JACK DORJOT  
 LITERARY EDITOR

LUCY WOOD  
 LITERARY EDITOR

WALLACE SCHERER  
 LITERARY EDITOR

CADMUS CLUB



CLASSES

## Senior Class

---

MRS. CALDWELL, *Sponsor*

### FALL TERM

RICHARD RESER, *President*  
KATHERINE WOOLSEY, *Vice-President*  
AUGUSTA LEE BEIDLEMAN, *Treasurer*  
JOHN HUGHLETT, *Secretary*

### SPRING TERM

WALLACE SCHERER, *President*  
RICHARD RESER, *Vice-President*  
LUCY WOOD, *Treasurer*  
ELIZABETH LOWRY, *Secretary*



## Farewell

*Dryden Fleenor*

---

Too swiftly now the time draws near  
For this, our last rehearsal,  
Ere we on the stage of life appear  
To face advance or reversal.

Many the happy days we've spent,  
And precious the ones remaining,  
Not shirking, working as our bent,  
Our school's ideals maintaining.

Once more a song for soon we go;  
Ring out our praise in melody  
Both clear in cheer and soft in love  
For our revered Tennessee.

When shadows fall soft over all  
In memory we shall return  
Back to thy halls where echoes call,  
And comradeship's flames still burn.

JUNE ELSA ALLEN  
CLASSICAL

Cadmus Club; Treasurer All Students' Club, '32; All Students' Club Council, '31-'32; President Girls' Hi-Y, '31-'32; Vice-President Girls' Hi-Y, '31-'32; Vice-President Dramatic Club, '32; French Club; Orchestra, '28-'29-'30; Manager Senior Basket-ball Team, '31-'32; Tennis Club, '31-'32.

"As sweet and musical  
As bright Apollo's lute."

ROGER MARTIN BACHMAN  
POLYTECHNIC

"What care I when I can lie at rest,  
Kill time and take life at its best?"

JACK BARKER  
GENERAL

Football, '30-'31-'32; Boys' Hi-Y, '31-'32; Cadmus Club; Band; President Sophomore Class; President All-Students' Council, '32.

"The school's acknowledged athlete,  
In any sport he's hard to beat,  
A boy that's never known defeat,  
That's Jack."

AUGUSTA LEE BEIDLEMAN  
CLASSICAL

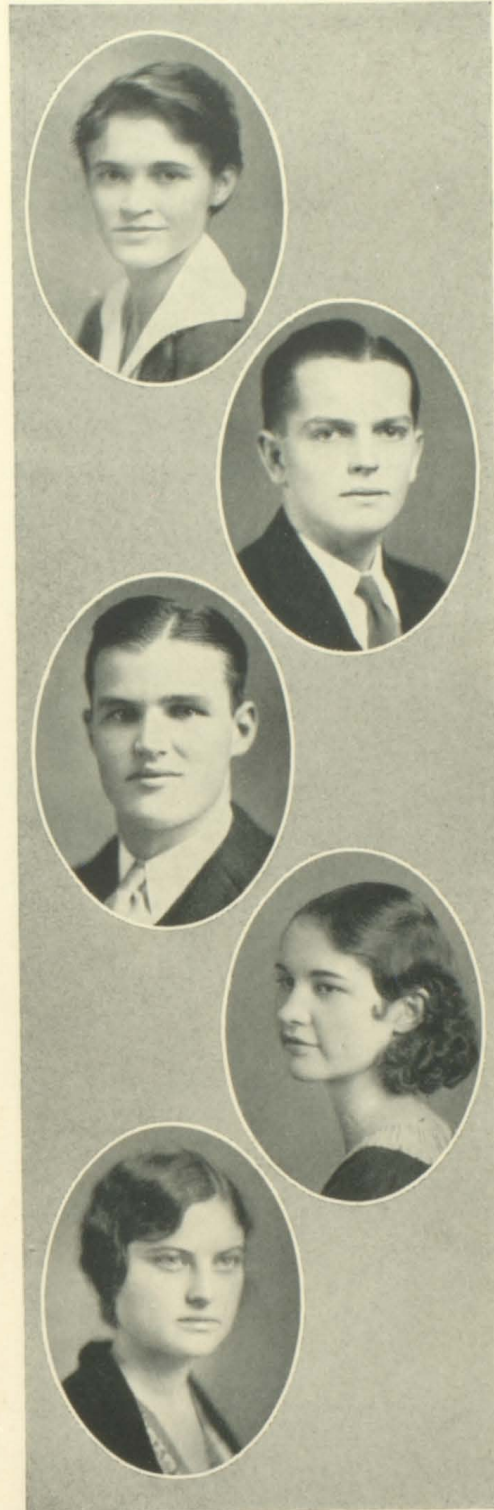
Sigma Tau Sigma, '29-'30; Secretary Sophomore Class; Treasurer Senior Class; Girls' Hi-Y, '31-'32; President Dramatic Club, '31; Cadmus Club; French Club, '31; Chi Delta Phi, '30-'31; All-Students' Club Council, '31.

"Excelling in dramatic art,  
No matter whether long the part  
Or difficult—I'll say she's smart."

MARION ELIZABETH BOOHER  
CLASSICAL

Cadmus Club; Chi Delta Phi, '30-'31; Girls' Hi-Y, '31-'32; Dramatic Club, '31-'32.

"A friend who knows and dares to say  
The brave sweet words that cheer the way."





EUGENE BURRESS BROWN, JR.  
MANUAL ARTS

Circulation Manager *Maroon and White*, '30-'31;  
 Assistant Football Manager, '31; Boys' Hi-Y,  
 '27-'28.

"King of two hands, he does his part  
 In every useful toil and art."

GENEVIEVE CALDWELL  
CLASSICAL

President French Club, '31; Athletic Council,  
 '31; Secretary Dramatic Club, '31; Art Editor  
 Cadmus Club; All-Students' Club Council, '31.

"She that's loved by all so well  
 How we hate to bid farewell  
 To Genevieve Caldwell."

MARY LELIA CLARDY  
COMMERCIAL

Girls' Hi-Y, '31-'32; Cadmus Club; Commercial  
 Club, '30-'31; Chi Delta Phi, '30-'31.

"She's just as graceful as she's tall,  
 You see her flitting down the hall,  
 One minute here—then not at all."

HAZEL COLLINS  
COMMERCIAL

Commercial Club, '30-'31-'32; Dramatic Club,  
 '31-'32; Chi Delta Phi, '30-'31.

"And she is fair, and fairer  
 Than that word."

KATHRYN ELOISE COOKE  
COMMERCIAL

Girls' Hi-Y, '31-'32; Commercial Club, '30-'31;  
 Athletic Council, '31; Band; Chi Delta Phi, '30-'31;  
 Treasurer Commercial Club; Sigma Tau Sigma;  
 Dramatic Club.

"Her air had a meaning; her movements a grace,  
 You turned from the fairest to gaze on her face."

GEORGE THOMPSON DAVIS  
CLASSICAL

Secretary-Treasurer Boys' Hi-Y, '31-'32; Vice-President Industrial Arts Club, '31; Band, '30-'31-'32; Secretary-Treasurer Oratory Club, '31; Public Speaking, '30; Pi Sigma Gamma, '29-'30.

"An honest man is the noblest work of God."

JACK DORIOT  
POLYTECHNIC

Cadmus Club; Debating Club, '31-'32; President Debating Club, '32.

"Here is a friend indeed, with all  
A friend's best virtues shining bright."

BONITA ELIZABETH EGGERS  
HOME ECONOMICS

Girls' Hi-Y, '31-'32; Sigma Tau Sigma, '30-'31; Athletic Council, '30-'31.

"A maiden never bold,  
A spirit still and quiet."

CALLA FRANCES ELLENBURG  
HOME ECONOMICS

Girls' Hi-Y, '31-'32; Commercial Club, '30-'31; Civics Club, '31-'32.

"A face with gladness overspread;  
Soft smiles by human kindness bred."

CHARLES DELMER FLEENOR  
COMMERCIAL

Commercial Club, '30-'31-'32; Secretary Commercial Club, '31; President Commercial Club, '32; All-Students' Club Council, '32.

"Put your troubles in the bottom of your heart,  
And sit on the lid and smile."





ARTHUR DRYDEN FLEENOR  
MANUAL ARTS

Industrial Arts Club, '31-'32; President Industrial Arts Club, '31; Band, '30-'31-'32; All Students' Club Council, '31; Debating Club, '31.

"In woodworking or in art,  
In everything he's smart."

CHARLES WARREN FLEENOR  
POLYTECHNIC

Boys' Hi-Y, '31-'32; Football, '31; Track, '30-'31-'32; Alchemist Club, '32.

"On with the dance!  
Let joy be unconfined."

JAMES CORNELIUS FORGEY  
MANUAL ARTS

Football, '31; Industrial Arts, '31-'32; Alchemist Club, '32.

"Things are bound to happen, why worry?  
Everything comes if you wait, why hurry?"

FLORENCE ELIZABETH FRANKLIN  
COMMERCIAL

Girls' Hi-Y, '31-'32; Secretary Girls' Hi-Y, '32; Commercial Club, '29-'30.

"Of disposition soft and sweet,  
Is entertaining yet discreet.  
A girl you're always glad to meet—  
That's Florence."

OLA MADGE GOODMAN  
COMMERCIAL

President Commercial Club, '31; Commercial Club, '30-'31-'32; Maroon and White, '29-'30-'31-'32; All-Students' Club Council, '31.

"A merry heart both good and kind,  
And a truer friend 'tis hard to find."

BENJAMEN GREEN  
CLASSICAL

Commercial Club; French Club; Dramatic Club, '31-'32.

"Argue if you can,  
If not, dispute it like a man."

SARAH VIRGINIA HAMLET  
COMMERCIAL

Commercial Club, '30-'31-'32; Secretary Commercial Club, '32; Cadmus Club; Maroon and White, '29-'30-'31-'32.

"Faithful and clear in honor."

JOHN LEE HUGHLETT  
POLYTECHNIC

All-Students' Club Council, '32; President Boys' Hi-Y, '32; Cadmus Club; Secretary Senior Class, '31.

"He hath a wisdom that doth guide his valor."

MARY LOUISE KEESLING  
CLASSICAL

Basket-ball, '27-'28-'29-'30-'31; President Athletic Council, '30; Girls' Hi-Y, '31-'32; Literary Societies, '29-'30-'31; All-Students' Club Council, '30-'31-'32; Secretary All-Students' Club Council, '31; Vice-President Dramatic Club, '31; Cheer Leader, '31-'32; Cadmus Club; Tennis Club, '29-'30-'31-'32.

"A comrade blithe and full of glee,  
Who dares to laugh out loud and free."

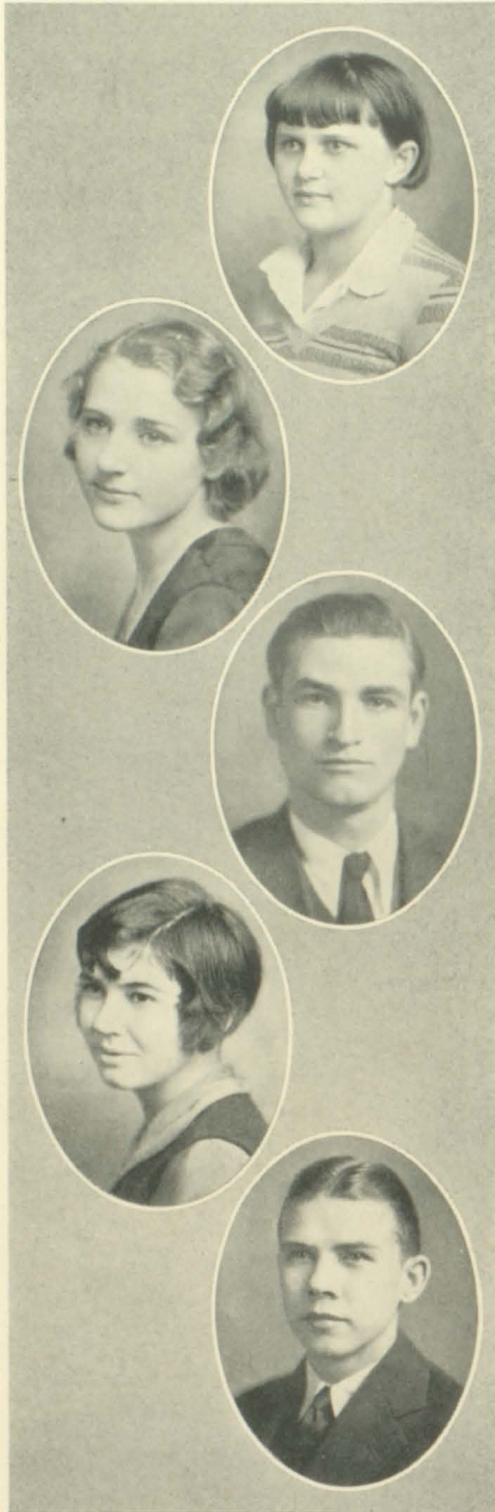
KATHERINE ELIZABETH KESNER  
CLASSICAL

Cadmus Club; Girls' Hi-Y, '31-'32; All-Students' Club Council, '31-'32; Dramatic Club, '31-'32; Glee Club, '30-'31; Tennis Club, '32.

"Those about her,  
From her shall learn the perfect ways of honor."







AGNES LUCILE KING  
POLYTECHNIC

Girls' Hi-Y, '31-'32; President Girls' Hi-Y, '32.

"A diligent student is this maid,  
Of real hard work she's unafraid,  
She's frank and calls a spade a spade."

CLAUDIA MARIE LANE  
CLASSICAL

Girls' Hi-Y, '31-'32; Alchemist Club, '31-'32;  
*Maroon and White*, '32.

"In her work forever active,  
She sure is sweet and right attractive,  
Who wouldn't want to be your captive,  
Claudia?"

GRADY KELLY LEE  
COMMERCIAL

Commercial Club, '30-'31-'32; Public Speaking  
Club, '31-'32; Alchemist Club.

"An unassuming boy in truth,  
A lad of decent parts, and good repute."

CLARA ELIZABETH LOWRY  
CLASSICAL

Basket-ball, '30-'31; Alternate Captain Basket-  
ball, '31; Athletic Council, '31-'32; Secretary  
Athletic Council, '31; Girls' Hi-Y, '31-'32; Treas-  
urer Girls' Hi-Y, '31; French Club, '31; Intra  
Mural Council, '31-'32; Secretary Senior Class, '32.

"Toward the best of life does she tend,  
And to all who know her, she is a friend."

JOHN ORBUM MARCY  
POLYTECHNIC

Civics Club; Dramatic Club, '31-'32.

"Better be small and shine,  
Than large and cast a shadow."

LOUISE McGOLDRICK  
CLASSICAL

Secretary Freshman Class; Pi Sigma Gamma;  
Girls' Hi-Y, '31-'32; Secretary Girls' Hi-Y, '31;  
French Club, '31; Dramatic Club, '31-'32.

"Beautiful faces are those that wear  
The light of a pleasant spirit there."

MARTHA LOUISE MORTON  
COMMERCIAL

Commercial Club, '30-'31.

"Her voice was ever soft,  
Gentle and low—an excellent thing in woman."

GEORGE THOMAS O'DELL  
COMMERCIAL

Commercial Club, '30-'31-'32.

"No legacy is so rich as honesty."

HUBERT FAIN OWEN  
MANUAL ARTS

Football, '28-'29-'30-'31; Captain Football, '31;  
Boys' Hi-Y; All-Students' Club Council; T Club;  
Track, '29-'30-'31; Vice-President Freshman Class.

"Not ever serious, not frivolous,  
But a rare good fellow."

NELL NORA OWEN  
CLASSICAL

Editor-in-Chief *Maroon and White*, '31-'32;  
*Maroon and White*, '30-'31-'32; Chi Delta Phi,  
'30-'31; All-Students' Club Council, '30-'32;  
Dramatic Club, '31-'32.

"With gentle yet prevailing force,  
Intent upon her destined course."





RICHARD MAURICE RESER  
POLYTECHNIC AND CLASSICAL

President Sub-Freshman, '27-'28; President Sophomore Class, '29; President Senior Class, '31; Varsity Debating, '31-'32; Athletic Council, '31; Vice-President Senior Class, '32; Cadmus Club; Alchemist Club; Boys' Hi-Y, '31-'32; All-Students' Club Council, '29-'31.

"That which is worth doing at all is worth doing well."

JULIA HOLSTON RHEA  
CLASSICAL

Manager Intra Mural Athletics, '31-'32; Girls' Hi-Y, '31-'32; Treasurer Girls' Hi-Y, '32; *Maroon and White*, '32; Science Club, '31; Treasurer Science Club, '31; Journalism, '31; Chi Delta Phi, '31; Varsity Basket-ball, '30-'31.

"More generous girl you couldn't find,  
And just as sweet as she is kind."

UNA MAE ROGERS  
CLASSICAL

Chi Delta Phi, '29; Treasurer Junior Class, '30; French Club, '30-'31; Girls' Hi-Y, '32; Secretary French Club, '31; Commercial Club, '31.

"A Galli-Curci number two,  
With voice that rings so clear and true,  
She's musical just through and through."

WALLACE B. SCHERER  
POLYTECHNIC

Track, '30-'31-'32; Band, '32; Orchestra, '32; Vice-President French Club, '32; Dramatic Club, '31-'32; Cadmus Club; Vice-President Industrial Arts Club, '31; President Alchemist Club, '31; Treasurer Alchemist Club; President Senior Class, '32.

"Wisdom of many and wit of one."

SARAH ELIZABETH SENEKER  
CLASSICAL

Sigma Tau Sigma, '29-'30; Debating Club, '30-'31; Girls' Hi-Y, '31-'32; French Club, '31-'32; Alchemist Club, '31-'32; *Maroon and White*, '31-'32.

"She never found fault with you, never implied  
Your wrong by her right."

JOHN OSCAR SIMPKISS, JR.  
CLASSICAL

Alpha and Omega, '27; Sigma Tau Sigma, '28;  
Public Speaking Club, '29; Band, '30-'31; Alchemist  
Club, '31-'32; French Club, '30-'31-'32.

"Time, I dare you discover  
Such a youth, and such a lover."

LOIS SPARGER  
HOME ECONOMICS

Commercial Club, '30-'31.

"The quietest of this class I'm sure,  
She's all that's sweet and right demure  
And just the kind that will endure."

JAMES PAUL SWINEY  
COMMERCIAL

Commercial Club, '30-'31-'32; Science Club,  
'31-'32.

"A fellow-feeling that is sure  
To make the outcast bless his door."

NATHAN GILLAM THOMAS  
POLYTECHNIC

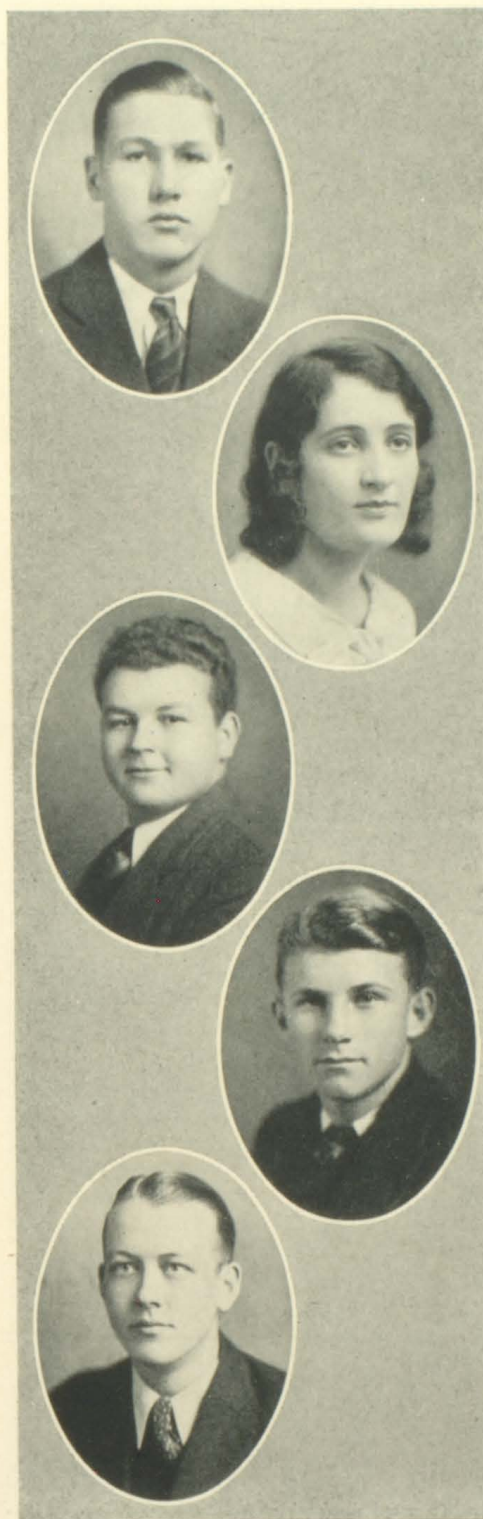
Boys' Hi-Y, '31-'32.

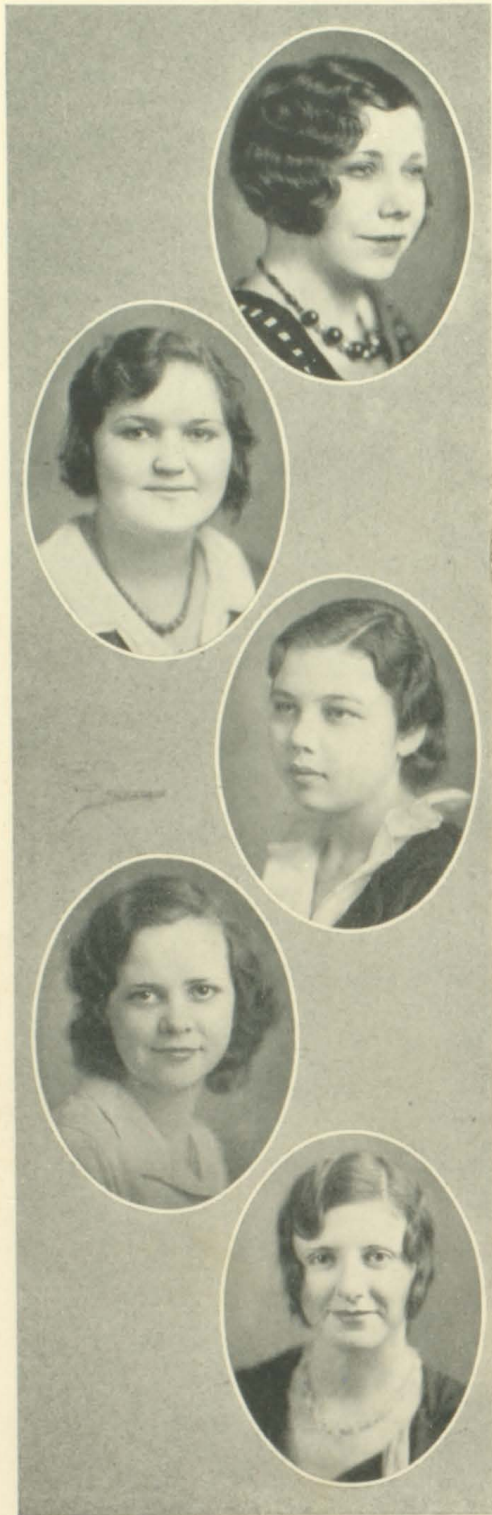
"At school we know him a sharp-witted youth,  
Grave, thoughtful, and reserved among his  
mates."

MARION MORRIS WARREN, JR.  
MANUAL ARTS

Athletic Council, '29; Secretary Athletic  
Council, '29; Football, '28-'29; T Club; Boys'  
Hi-Y, '29-'30-'31-'32.

"A rare compound of oddity, frolic and fun.  
Who relished a joke and rejoiced in a pun."





ADA RAY WHITAKER  
HOME ECONOMICS

Sigma Tau Sigma, '29-'30; Commercial Club, '31-'32; Science Club, '31-'32.

"In household arts she doth excell,  
'Tis marvelous she cooks so well,  
A happy home we can foretell—for Ada."

HAZEL MAUDE WHITAKER  
COMMERCIAL

Commercial Club, '30-'31-'32; Science Club, '31-'32.

"Of soul sincere, in action faithful,  
And in honor clear."

LUCY WOOD  
CLASSICAL

Girls' Hi-Y, '31-'32; President Chi Delta Phi '31; All Students' Club Council, '31; Cadmus Club; Alchemist Club, '31-'32; Phi Sigma Gamma; Treasurer Senior Class, '32; Chi Delta Phi, '30-'31.

"With such a comrade, such a friend,  
I fain would walk till journeys end."

ALICE KATHERYNE WOOLSEY  
CLASSICAL

Vice-President Senior Class, '31; Secretary Junior Class, '30; Commercial Club, '30; French Club, '31; Secretary Science Club, '31; Cadmus Club; Girls' Hi-Y.

"Of this type there are but few  
That always smile—are never blue.  
We wish we all could smile like you,  
Katheryne."

GLADYS LORRINE WHITE  
COMMERCIAL

Sigma Tau Sigma, '29-'30; Commercial Club, '30-'31-'32; Basket-ball, '30-'31; Maroon and White, '28-'29-'30-'31-'32; Science Club, '29; Civics Club, '29.

"As jolly as the day is long."

JACK FOGARTY  
GENERAL

Track, '29-'30-'31-'32; Football, '29-'30; Basketball, '30-'31-'32; Debating Club, '31-'32; President Alchemist Club, '32; French Club, '31-'32; Tennis Club, '29-'30-'31-'32; All-Students' Club Council, '32; Pi Sigma Gamma, '29-'30.

"No task too great and none too small,  
Willing to work, or play football."

CLAUDE H. HENINGER  
MANUAL ARTS

Boys' Hi-Y, '30-'32; Industrial Arts Club; Sigma Tau Sigma.

"A friendship that makes the least noise is often  
the most useful."

CHARLES BRANTLEY KINCH  
POLYTECHNIC

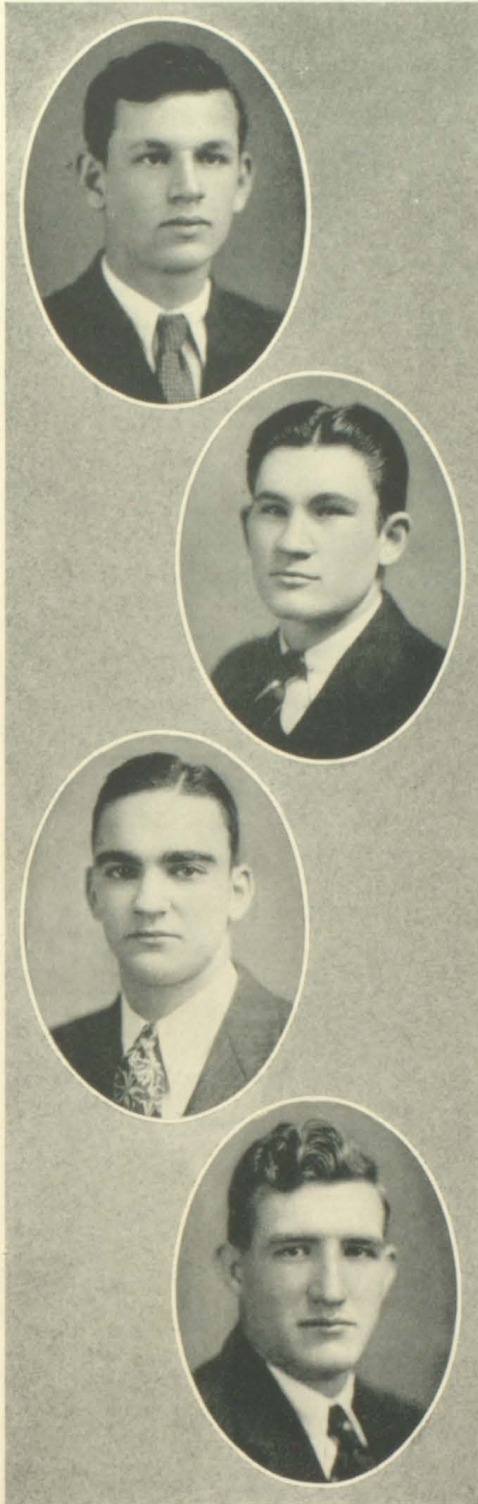
Varsity Debater, '29-'30-'31-'32; President Debating Club, '31; Boys' Hi-Y, '32; All-Students' Club Council, '31-'32; Extemporaneous Speaker, '31-'32; Sigma Tau Sigma, '29-'30.

"We wonder why he argues so,  
And where he gets this queer motto:  
'I know because I know.'"

W. A. RAY  
GENERAL

Junior Class Herald, '30; Vice-President Boys' Hi-Y; Boys' Hi-Y, '29-'30-'31-'32; Chi Delta Phi, '30-'31; Football, '28-'29-'30-'31; Track, '28-'29-'30-'31; Baseball, '27-'31; Basketball, '31.

"Who mixed reason with pleasure  
And wisdom with mirth."



## Senior Statistics

---

HAZEL COLLINS . . . . .	Prettiest Girl
JACK BARKER . . . . .	Handsomest Boy
JUNE ALLEN . . . . .	Most Popular
JAMES FORGEY . . . . .	Laziest
KATHERINE WOOLSEY . . . . .	Sweetest Girl
AGNES KING . . . . .	Most Studious
MARY KEESLING . . . . .	Best All-Round Senior
KATHERINE KESNER . . . . .	Most Dignified
MARY KEESLING . . . . .	Most Athletic Girl
JACK BARKER . . . . .	Most Athletic Boy
NATHAN THOMAS . . . . .	Most Bashful
CHARLES KINCH . . . . .	Class Sheik
WALLACE SCHERER . . . . .	Wittiest
JUNE ALLEN . . . . .	Most Talented
WALLACE SCHERER . . . . .	Most Original
KATHERINE WOOLSEY . . . . .	Cutest Girl
ELIZABETH BOOHER . . . . .	Quietest
JACK FOGARTY . . . . .	Teacher's Pet
ROGER BACHMAN . . . . .	Most Conceited

## Class Prophecy

---

While reclining one evening on a lounge in my suburban home, there came over me a sudden feeling of loneliness. If I could only find something different from the daily routine; some of my old friends perhaps—ah yes, my old friends.

Absent-mindedly I switched on the television. Before me on the image plate was the face of none other than Warren Fleenor singing the old familiar strains of "A Cuban Love Song." My Aunt! "Doc" Fleenor! and just as I was talking about old friends; well, well!

I turned to hear Leopold Stokowski's symphony orchestra. You can imagine my surprise upon hearing the announcer say that Mister Stokowski had been exceedingly fortunate in obtaining as a first violinist, Mrs. Felix Fiddlemore, formerly Miss June Allen of Bristol, Tennessee. Well, could you beat that?

It seemed strange that I should have seen two of my former classmates within ten minutes but it gave me an idea. Why couldn't I, by some means, get in touch with the rest of them? I went to a hypnotist and told him my plan. He put me first in a stage of hypnosis called somnambulism, then in a state of clairvoyance. In this state my mind could traverse space at will.

As soon as I was a clairvoyant I found myself in the radio control room of the S. O. S. *Lusitanic* in the middle of the Pacific Ocean. Before me was G. T. Davis with headphones on. "Hello, 'Unk,'" I said. He jumped as if he were shot because, of course, he couldn't see me. To one side was Jim Forgey. He was perfecting his new electro-metallurgical radio condenser which had already proved its value in the radio world.

In a flash the Cathedral of St. John came into view. "Dub" Ray was directing some men at the task of cutting delicate filigree work in stone. Indeed, he was doing a wonderful work, and it required much time and patience.

The momentary glimpses I got of the Universities Hombre and Nassau showed Nell Owen and Claudia Lane trying desperately to hammer some knowledge of Horace and Virgil into the minds of their pupils. Then as the landscape tore past, Columbia University loomed up before me. Outside, on the arena, Hubert Owen was coaching the finest football team in the North. I didn't see any familiar faces among the team members so I went inside. There Grady Lee was going through his daily round of teaching his English class. An eraser and some chalk sailed across the room and hit some unfortunate on the head. I didn't have to look to know that John Hughlett was the sniper. It was the same old story. He had always done that. In the distance I heard someone screaming. It came from the Metropolitan Opera House down on Fifth Avenue. Inside I found the source of all the uproar. It was Una Mae Rogers holding out on a high note while making her debut.

In the town of Hoehill there was a meeting of the Ladies Uplift Society. There were Frances Ellenburg and Sarah Jones busy at knitting socks for the Orphans' Home. Mary Clardy and Louise McGoldrick were over in the corner holding a confab about the picture show which they had just seen. They said that if the state didn't get a better board of censors, their Society would have to take the matter in hand. Katheryne Woolsey and Lucy Wood came in then with the tea and refreshments. When every one had been served, they sat down at a table with Katherine Kesner. Katherine emerged from behind her cup of tea, peered over her horn rimmed spectacles and started whispering in an undertone. I could catch only a little of what she said. It seems that Johnathan Marcy,



the new minister, had been leaving town frequently for some unknown reason. One day he came bustling down the station platform after one of these mysterious jaunts. With him was a tall brunette. Every one had guessed the outcome. He had been secretly married to a girl whom they recognized as Lois Sparger.

Enough of that! I must go on. Again my mind wandered off to bring me visions of my classmates. This time I saw Jack Barker making a speech in a large auditorium. He was earnestly pleading for employment relief. As his words resounded throughout the building, stenographers wrote what he said. Sarah Hamlet was one of them and Ola Goodman was another. No word or phrase was too insignificant to catch; their fingers fairly flew.

As the silver-tongued, gold-toothed orator finished his speech the audience burst into applause. Jack's cause had been won. No longer would men have to work two and three hours a day. No longer would children have to carry heavy buckets of coal up the cellar steps. This speech reminded me of the senators in Congress.

With the thought, I found myself in Washington at the fall session of Congress. Nathan Thomas had just introduced a bill for a New Tennessee High School. Some goof jumped up and said that he didn't see any use in wasting good money on a little town like Bristol which never produced any one of any importance. With that, nearly half a dozen people popped up. "Is that so?" said one of them. "I'm Jack Doriot and I came from Bristol, Tennessee, High School. Here is Elizabeth Lowry and there is Gladys White. They are the only two women this Congress can boast, and besides, if Marion Warren and Thomas O'Dell over there haven't proved their worth to you Congressmen, then you don't know a good thing when you see it; and furthermore, if—" In the midst of that outburst I left; things were getting pretty hot.

Down from the Capitol building I ran across a firm whose sign read "Barritt and Grinn, Stock Brokers." Upon entering I found that the proprietors, Mrs. Barritt and Mrs. Grinn were Augusta Lee Beidleman and Bonita Eggers. Because their husbands stayed at the billiard parlor all the time, they were obliged to run the business themselves or starve.

Across the street was the office of Eugene Brown, Certified Public Accountant. Eugene had made a remarkable success in business and he had a wonderful establishment.

A large gathering caught my eye. It was a meeting of the D. A. R. on a lawn in front of the home of Hazel Collins. Mr. Roger Bachman was conducting the ceremony of the characteristic tree-planting. As he paused in his speech I heard someone explaining how she fixed Spanish rice so Junior would eat it. This proved to be Alberta Baumgardner. She was talking to someone whose face seemed quite familiar. Ah, yes! It was Sara Seneker. I didn't know her with that Princess Iseinya hat on.

Finding no other old acquaintances, I adjourned to Paris. In the Studio d'Art, Genevieve Caldwell was gracefully posed for a portrait. Behind the canvas Dryden Fleenor was struggling with the brush, trying to fit Genevieve into a design for the 1974 Tuberculosis stamp. Claude Heninger, Dryden's instructor, was standing beside him giving a hint now and then. Dryden had made wonderful headway in painting under Claude's supervision. Claude himself had studied in Paris for a number of years and he had set up his studio there.

In less time than it takes to tell it, I was back in Bristol at old Tennessee High. It made me sad when I could find only one person there that I knew. This was Mary Keesling. Mary had for eight years been the girls' physical education director. She had produced winning teams each year and was highly pleased with her girls.

Down town I found that Jack Fogarty was a prominent surgeon—a bone specialist. Jack had invented what he called a “bone mill” with which he could perform operations in one-fourth the usual time. His invention had proved a great help to surgery.

In all my travels how could I have failed to see Paul Swiney? Surely he must not be on earth or I would have seen him. There was only one thing to do: explore the lower regions. This I did. Dante surely knew what he was talking about when he wrote his story. I had never seen such a hot place in all my life. The “Head Man” was pushing people to the edge of the fire with his pitchfork. Back a little farther from the fire were Delmer Fleenor and Paul Swiney busily engaged in filing pitchforks. Their appearance was shocking. The heat had reduced Paul to a mere skeleton and you can imagine what Delmer looked like. Their genial smiles had changed to wicked grins. After making my presence known to them, I asked why they were there. They said that the boss had noticed what good saw-filers they had been in woodworking class. He had told them what fun it would be to watch him pushing people in the fire while they were filing pitchforks, but it wasn't as pleasant as they had anticipated. Something must be done. I gave a loud cough and the so-called “head man” turned around. I thought I was invisible, but he must have seen me for he cast one of his barbed pitchforks right at me. Paul and Delmer saw their chance and fled, but I was in a terrible mess. When the pitchfork hit me I felt as though a thousand spears were tearing me asunder. I screamed! Then— all was black.

“How are you?” said my hypnotist. “You seemed to be having trouble so I stuck you with this pin to wake you up.”

“You what?” Wiping the clammy perspiration from my forehead I continued: “Do you mean to tell me that I've been dreaming? Let me out of here.”

I hurried away with my brain all in a muddle. In an effort to cast off my frantic state of mind I entered a theatre and collapsed into one of the seats.

Not until the news reel was shown did I take any interest in what was going on. It showed some pictures of Sing Sing Prison. Unless my eyes deceived me, I saw Tom O'Dell, alias 87654321. There he was in person, making little ones out of big ones. Who would have thought it? The next picture was more pleasant. Professor Einstein was working with his new assistant, Agnes King. Jack Simpkins was helping them with a test for a new chemical discovered in the stars. I saw nothing of interest in the next news flash but the fourth was positively ludicrous. Stalin, the big man in Russia, was seated in a barber's chair. Dick Reser was standing over him hacking at Stalin's beard with a grass sickle. After every two or three “chops” he would stop and sharpen it. This time I pinched myself to be sure that I was awake, but it was real.

After the news reel had been shown the audience was entertained by a dance by a trio composed of Elizabeth Booher (strange as it may seem), Julia Rhea and Florence Franklin. You wouldn't believe that these three could ever dance, but they did—and how!

When the main show began, I saw in the list of characters the name Benjamin Green. This was indeed of interest. The picture that followed was one which could not have been produced at all had it not featured such an actor as Ben.

It had been quite unusual to see my old classmates and it brought back the pleasant memories of our experiences while in the Class of '32. I hope that you have enjoyed reading this account as set down by the class prophet.

—WALLACE SCHERER, *Prophet*.

## Last Will and Testament

We, the Senior Class of Tennessee High School, City of Bristol, County of Sullivan, State of Tennessee, in the year of our Lord, one thousand, nine hundred and thirty-two, being of an unstable mind, due to late hours and final exams, do hereby make and declare this to be our last will and testament.

*First:* To Mr. Rubins and Mr. Tyler, we leave our high ideals and originality, as demonstrated in our chapel programs, Mardi Gras, and Senior Play.

*Second:* To our efficient and beloved sponsor, Mrs. Caldwell, we leave the tranquility of a pleasant summer, hoping that she may survive the weary months caused by said class.

*Third:* To the faculty, we leave our sincerest appreciation for their undying efforts to get us through. We further leave to them the satisfaction of knowing that their efforts have not been entirely in vain.

*Fourth:* To the Juniors, we will our dilapidated seats in assembly, believing that they will have them repaired shortly. We further leave to them the traditions of the Senior Class which have been so faithfully regarded by said class, with the admonition that they never disregard the Senior dignity.

*Fifth:* To Sophomores and Freshmen, we leave our best wishes for their success in the long journey that lies between them and graduation.

*Sixth:* To Sub-Frosh, we leave whatsoever influence we still have to prevent future trips to the showers and searches for lost articles.

*Seventh:* Jack Barker wills his dignified mien and ability to turn feminine hearts into tail-spins to Luther Hodge, with the injunction that Luther not weaken at the last moment. Augusta Lee Beidleman, alias Tildie Mae, bequeaths her position as head of the entertaining committee, and her knack of getting a laugh and giving a laugh at any minute to Jennie Levine. Mary Keesling wills her surplus supply of the old fighting spirit and her peculiarly stentorian tones to Eloise Wyman with these words, "Try anything once." Roger Bachman and Eugene Brown leave to Bill Tipton and "Babe" Roberts that comfortable "being-needed" atmosphere. Agnes King wills to Dan and Louis, of the same surname, the task of retaining her royal reputation. Bonita Eggers, Frances Ellenburg, and Florence Franklin leave their good dispositions and willingness to work to Lucile Childress, Alice Combs and Thelma Counts. Ola Goodman and Sarah Hamlet leave their formula of the "Hunt and Peck" system in typing to Beulah Witt and Mary Sue Young. Jack Simpkins and the two Fleenors (Warren and Dryden) leave their ability to "trip the light fantastic" with a tapped toe to Sam Shankle, Ted Perry and Clyde Lacy, with the advice that once mastered, fame will be theirs. Charles Kinch leaves all his tender messages of love and his eloquent delivery of them to Rabbit Harrold, with these words, "You can fool some of the people some of the time, and you can fool some of the people some of the time, but you can't fool some of the people some of the time." Hazel Whittaker, Louise Morton, Gladys White and Sarah Seneker pass on their slogan, "Silence is golden" (when it gives consent), to Ida Rutherford, Virginia Gurley, Louise Franklin and Martha O'Dell, stating that this will always keep peace in the ranks. Wallace Scherer, generalissimo of the Senior cohorts, bequeaths to Mack Furlow his originality

and versatility. Katherine Kesner leaves her title as a "good worker" and her ability to "get ads" to Nancy Emmert. Jack Doriot, Jack Fogarty, and John Hughlett will their ability to deal in sarcasm and to "crack up" underclassmen to Bruce Graham and Buddy Nuckolls. Una Mae Rogers and Genevieve Caldwell bequeath to A. Atwater Kent their golden voices that he may entertain other audiences as they have entertained B. T. H. S. audiences. Katherine Cooke and Katheryne Woolsey endow Josephine Senter and Margaret Owens with their attractive looks and pleasing personalities. Dick Reser bequeaths his Southern drawl, his inquisitive nature and entertaining ways to Bob Smith. Julia Rhea, Elizabeth Lowry and Claudia Lane leave to Eula Massengill, Martha Roundtree and Elizabeth Tipton their *magna cum laude* records at B. T. H. S. Mary Clardy, Grady Lee and Marion Warren leave their surplus lengths to June Smith, Eddie Esser and Margaret Montgomery. Claude Heninger, John Marcy and Nathan Thomas will their places "on the wall" to Bud Phipps and L. B. Snapp. Louise McGoldrick and Lucy Wood bequeath to Louise Harkloroad and Virginia Dickson their willingness to do it with a smile. Hubert Owen leaves his place as pilot of the Vikings team to Rod O'Dell, pilot-elect for the '32-'33 season. Nell Owen wills her journalistic abilities to Lucy Booher, wishing her as much success as she has had in editing the *Maroon and White*. To Gordon Mooney, Edgar Swiney and Ben Green, Tom O'Dell, George Davis and Paul Swiney impart the secret of their success in escaping the unscrupulous tactics of certain B. T. H. S. girls. Hazel Collins and Elizabeth Booher leave their modest and quiet ways to Elizabeth Thomas and Thelma Gray. W. A. Ray bequeaths all his football skill to Adrian Shumaker. Jim Forgey bequeaths to Louis Stockton his lifeless spirit. And last, Delmer Flenor leaves his ability to draw anything as it should be drawn to Lois Sparger.

Signed, sealed and declared by the Senior Class of 1932, to be our last will and testament.

JUNE ALLEN, *Attorney-at-Law.*

Witnesses thereto:

WALLACE SCHERER  
DICK RESER  
AUGUSTA LEE BEIDLEMAN  
MARY KEESLING



## Class History

An arising September sun found the future Seniors of '32 within the walls of Tennessee High, eyeing with misgiving the old wooden lockers on the third floor, and wondering how such a perishable thing as wood could withstand the assault of the hungry lunch-time crowd.

Our Sub-Freshman class gave a play in chapel titled *The Courtship of Miles Standish*, which, unlike John Alden, spoke for itself.

The only serious upset of our first year at Tennessee High was the science experiment which made a "Lindy" loop from Miss Norvelle's hand to the floor. I believe that none of us has forgotten the poems we memorized in her class. We managed to get out of that unforgettable General Science class (how?)—let the dead past bury its dead.

In the fall of '28 we came back to the road on which we began as Sub-Freshmen, our highway leading to the Senior class.

What a relief it was to get down out of the balcony (a place that has been occupied by the Sub-Freshmen since the founding of Rome) and not to have the upperclassmen laughing at us at every chapel program.

After Mr. Ladd became better acquainted with his Latin III class, he invited us back almost every afternoon for a tea party. During these entertainments, our maestro, Mr. Ladd, led us in a wee bit of Latin singing in which our Irish Roman, Nell Owen, led all the rest with her nasal twang. The outstanding number was *Ipsius, Ipsius, Ipsius*.

In the autumn of the year '29 we took our cue from the trees, and as they donned their brilliant cloak we stepped forth in our conspicuous veneer of Sophomore sophistication.

One fickle October day (fickle because the brightness of the noon-day promised victory and pleasure, but the night brought us chills, punctures, and the realization of defeat) a number of jolly students rode in an old open bus to Morristown to attend the Tennessee-Morristown football game.

In the spring, Miss Owen took our Geometry class on an outing to Camp Cherokee. A rickety antique truck finally managed to "negotiate" the bumpy road and brought our ice cream safely and in a non-melting condition to the camp.

After a vain effort to catch some fish in the mountain stream which flows through the camp, and using several of the Geometry students' feet as bait, Lucy Wood seemed to have become angry with the fish and went into the water after them.

When Mr. Ladd and our Caesar book had thoroughly convinced us that "*Gallia est omnis divisa in partes tres*," our teachers said, "Bless you, my children," and sent us on our highway to success.

The realization of the dying summer came with the fall and with the fall came the realization that our care-free days as under-classmen were fading into the more serious days as upper-classmen.

Our first impression of importance came with our promotion into Mrs. Berghauser's English class. Our importance was given a severe setback when Mrs. Berghauser convinced us with our grades (more or less) that we could not depend on phonetics for our spelling.

Physics went over with a "bang" in our class; and while I'm on the subject of copper boilers, if Mr. Rowe had been built along the lines of "Short" Pettigrew he would probably have had his nose blown off.

I cannot pass over our Junior year without mentioning something about our concerts in French class. I wonder how Miss Dryden is going to continue teaching French without the help of Jack Fogarty's voice, not to mention Jack Doriot's plea for "Mercy Mister."

Although we were only Juniors in high school, yet we learned what "Kicked Out of College" could be. With the help of a red wig for Dick Reser and the sweater and skirt for Leonard Brown, Mr. M. H. Smith was able to bring out all of the excellent talent at his disposal and make a huge success of our Junior class play.

The members of the cast in the play will not soon forget the grand times enjoyed at rehearsals.

We closed our Junior year with a Junior-Senior outing at Fleenor Park.

The same kindly old sun that once sent his golden beams down to reassure the fears of a timid group of Sub-Freshmen of '27, came in the September of '31 to find that group, now no longer timid and far from fearful, with the confidence and pride of dignified Seniors.

In addition to our good fortune of becoming Seniors, we were granted the privilege of having Mrs. Caldwell, who is a newcomer to the faculty, as our English teacher and sponsor. She is such a vital part of our class that it is difficult to tell how much she has meant to us.

Old Santa entertained the student body on the eve of the Christmas holidays by making a surprise visit to the members of the faculty. Since Mr. Farthing has received his skates, he has been staying out of the waste basket.

During the Christmas holidays, our class enjoyed a lovely yuletide party at the home of our sponsor, Mrs. Caldwell.

Under the supervision of our sponsor, the Senior English Department gave two chapel programs to set a worthy example for the students by giving them something which was educational as well as entertaining.

Our first program was Shakespearean in which we presented scenes from several of Shakespeare's plays and sang some of his lyrics. Our next program was a Robert Burns program. This program consisted of several of Burns' love poems and some of his verses which had been set to music.

February 11, 1932, our Senior class sponsored a Mardi Gras, which was the most successful entertainment ever given by any class or club in the school. Our class was complimented for the high type of the performance. We will certainly remember the exciting contest between the classes for the queen of the Mardi Gras. Although the Sub-Freshman queen was a close second, Kathryn Cooke, the senior queen, won the crown.

On May 6 the Senior class presented its annual play entitled *She Stoops to Conquer*, by Oliver Goldsmith, under the direction of Mr. Gillingham. The major characters of the play were: Grady Lee as Mr. Hardcastle, Katherine Kesner as Mrs. Hardcastle, Augusta Lee Beidleman as Kate Hardcastle, Roger Bachman as Tony Lumpkin, Dick Reser as Young Marlow, Jack Fogarty as George Hastings and Genevieve Caldwell as Constance Neville.

On May 13 the Juniors and Seniors were given a banquet by the Parent-Teachers Association. There had never been a banquet of this kind in the history of the school.

When our treasured CADMEA went to press we realized that our days in the loved halls of our dear Alma Mater were coming to a close.

But the grey clouds of regret caused by our leaving are tinged with the gold of the pleasures and companionships that are still left to us. And now the time has come to say farewell to my classmates, the faculty and the student body as the curtain of graduation is drawn upon our five years in the halls of Tennessee High School.

—AUGUSTA LEE BEIDLEMAN, *Historian*.



## Junior Class

MISS HAGGARD, *Sponsor*

### FALL TERM

HOWARD PHIPPS, *President*  
EDDIE ESSER, *Vice-President*  
NANCY EMMERT, *Secretary*  
LUTHER HODGE, *Treasurer*

### SPRING TERM

LUTHER HODGE, *President*  
BILL TIPTON, *Vice-President*  
JOSEPHINE SENTER, *Secretary*  
SYLVAN HOBBS, *Treasurer*

ALLEN, MARY KATHERINE  
BAIRD, DONALD  
BOY, GLENN  
BLEVINS, MARY  
BOOHER, LUCY  
BROOKS, LOVDIE  
CARTER, JAMES  
CHILDRESS, LUCILLE  
COUNTS, THELMA  
DICKSON, VIRGINIA  
ELLENBURG, JAMES  
ESSER, EDDIE  
EMMERT, NANCY  
FORGY, JAMES  
FURLOW, MACK  
FEAGINS, ANNIE  
FLETCHER, ALICE  
GLENN, MABEL  
GRAY, THELMA  
HARKLEROADE, LOUISE  
HARROLD, ROBERT  
HOBBS, SYLVAN  
HODGE, LUTHER  
HUNT, HUBERT  
HERD, WOODY  
JONES, LAWRENCE  
KING, ALBERT  
KING, DAN  
KING, WILLIAM  
LACY, CLYDE

LESLIE, CARL  
LINDAMOOD, MARGARET  
MASSENGILL, EULA  
MERCER, MILDRED  
MOONEY, GORDON  
MORRISON, TURNER  
NEALE, DUWARD  
NUCKOLS, WALTER  
NELSON, EFFIE MAE  
OWENS, MARGARET  
O'DELL, KATHLEEN  
O'DELL, MARTHA  
POORE, HAZEL  
PHIPPS, HOWARD  
PERRY, TED  
QUALES, GRACE  
ROBERTS, HARROLD  
RUTHERFORD, ROBERT  
RICHARDS, CHARLES  
SMITH, ROBERT  
SNAPP, L. B.  
SHUMAKER, ADRIAN  
STONE, MILDRED  
SENER, JOSEPHINE  
SHOEMAKER, HOWARD  
THOMPSON, ANNETTE  
TIPTON, WILLIAM  
TIPTON, ELIZABETH  
WOOD, KATHERINE  
WARREN, MARGARET  
WATSON, THELMA





## Sophomore Class

Miss JAMES, Sponsor

### FALL TERM

S. L. O'DELL, *President*  
MARGARET HUFF, *Vice-President*  
EDWIN POWERS, *Secretary*  
JUNE SMITH, *Treasurer*

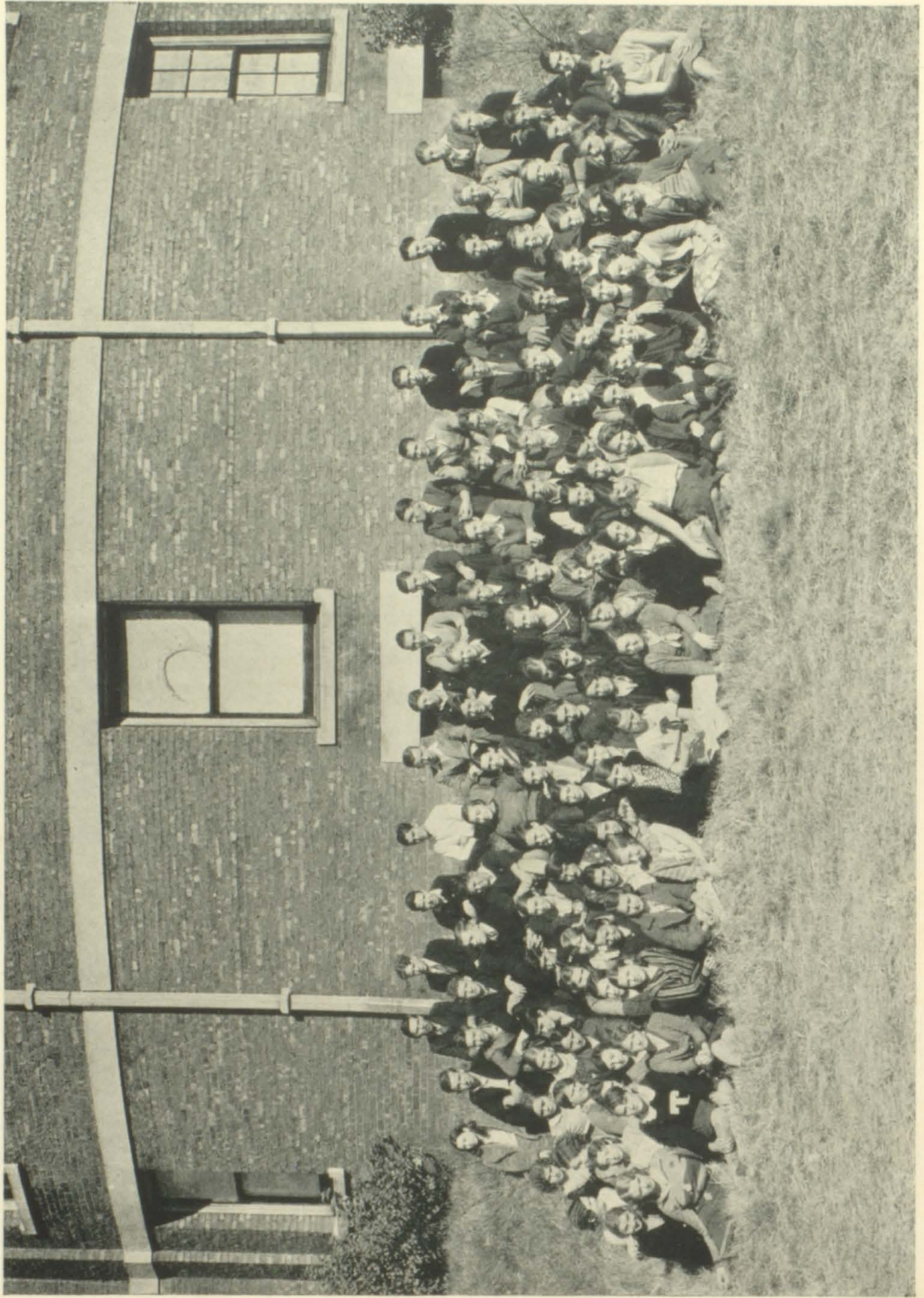
ANDERSON, LUCILLE  
ARBUCKLE, BETTY  
ARNOLD, ELIZABETH  
ARNOLD, MILDRED  
ASH, HUGH  
BARRON, JOHN  
BARKER, JUANITA  
BARR, MARTHA  
BELL, CUSTIS  
BLADES, MARTHA  
BOOHER, WOODROW  
BOY, REEVE  
BOYD, WILLIAM  
BRAY, MARY  
BRINKLEY, ELIZABETH  
BROWN, JAMES  
BUCKLES, MARY DEE  
CAMPBELL, WILLIAM  
CAPPELL, PEGGY  
CARTER, SAM  
CHILDRESS, HARRY  
COFFEY, CYRIL  
COMBS, ALICE  
COWAN, TAYLOR  
CROSS, HERBERT  
CRUMLEY, JUNIOR  
CLARK, BOB  
DALTON, JAMES  
DOUGHERTY, JIM  
DELANEY, FRED  
EARHART, KATHLEEN  
EASTERIDGE, DEWY  
EVERSOLE, KATHERINE  
FINE, KENNETH  
FLETCHER, ELIZABETH  
FLICK, LEWIS  
FORD, RALPH  
FORGY, IRENE  
FRANKLIN, LOUISE

FRANCIS, GUY  
FRANKLIN, TYLER  
GARLAND, ADA  
GRAHAM, BRUCE  
GRAY, THOMAS  
GURLEY, VIRGINIA  
HILTON, MARY  
HOOVER, LAWRENCE  
HUFF, MARGARET  
JESSIE, MARSHALL  
JONES, LUCILLE  
KAYLOR, BURDETTE  
KENSINGER, FRANCES  
KESNER, GENEVIEVE  
LEVINE, JENNY  
KING, JERE  
KING, LOUIS  
LINDAMOOD, KERMIT  
LESLIE, BOB  
LOVE, H. L.  
LYNCH, MARTIN  
MARSHALL, LINDA  
MATTOX, WILLIE JOE  
MARTIN, FRANCES  
MILLARD, ERMA  
McKEE, KELLY  
McGOLDRICK, H. P.  
MONTGOMERY, MARGARET  
NEEL, ISOBEL  
O'DELL, EDITH  
O'DELL, ELIZABETH  
O'DELL, CARL  
O'DELL, S. L.  
OSBORNE, JOE  
PAINTER, CARRIE  
PEOPLES, DAVID  
PETERS, MARTIN  
PETTIGREW, CARL  
PHARR, SARA MORE

### SPRING TERM

FRANCES MARTIN, *President*  
JIM WOLFORD, *Vice-President*  
JAMES RINGLEY, *Secretary*  
KELLY McKEE, *Treasurer*

PHIPPS, RUTH  
POE, MARJORIE  
POWERS, EDWIN  
RAY, LEOLA  
RHEA, ROBERT  
RIORDAN, ETHEL  
ROBERTS, HARROLD  
RUMLEY, NANCY  
RUTHERFORD, IDA  
RUTHERFORD, KATHLEEN  
RUTHERFORD, ERNEST  
SHANKLE, SAM  
SHELL, SARAH  
SMALLING, GEORGE  
SMITH, GEORGE  
SMITH, JUNE  
SMITH, MARY LYNN  
SOLOMON, ELEANOR  
SOLOMON, EVELYN  
SPITZER, MABEL  
STANSBURY, LOUISE  
STOCKTON, LEWIS  
STATZER, IDA MAE  
STREET, EVELYN  
STULTZ, ERNEST  
SWINEY, EDGAR  
TANKERSLEY, W. S.  
VIRES, CLEO  
WASSOM, RUTH  
WHITTAKER, ELSIE  
WILSON, PEARLE  
WITT, BEULAH  
WOODARD, CLAUDIA  
WHITTAKER, HENRY  
WILLIAMSON, CLYDE  
WOOLFORD, JAMES  
YANCY, PAULINE  
YORK, MARGARET  
YOUNG, MARY SUE



# Freshman Class

MISS FEINSTEIN, *Sponsor*

## FALL TERM

FRANK MORTON, *President*  
EVELYN BYRD, *Vice-President*  
MARJORIE WHITTAKER, *Secretary*  
MARY DE BUCKLES, *Treasurer*

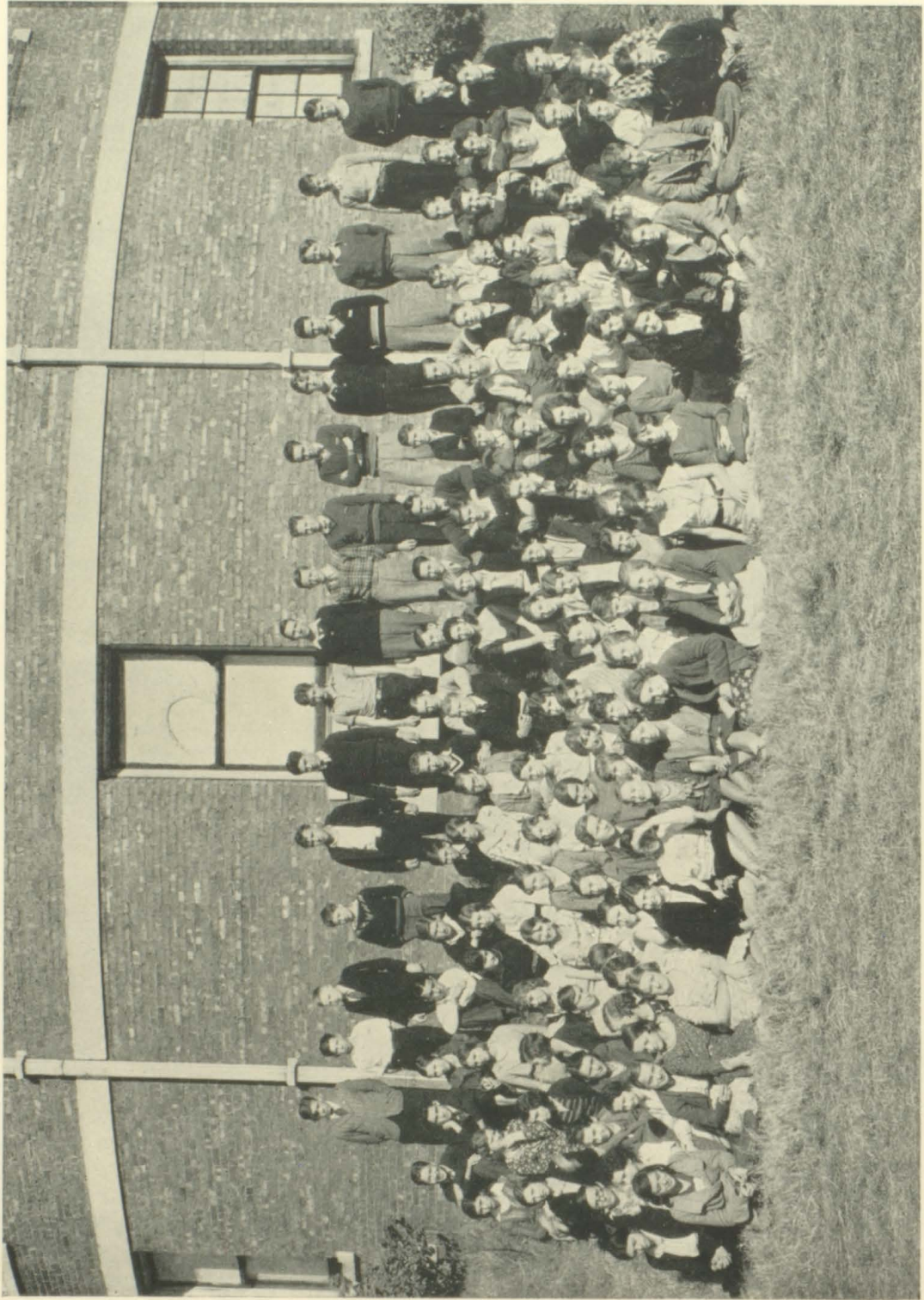
## SPRING TERM

R. J. HICKS, *President*  
JEAN STICKLEY, *Vice-President*  
ELIZABETH ROLLINS, *Secretary*  
FRANK MORTON, *Treasurer*

ANDERSEN, ALEX  
ANDERSON, CARL  
ANDERSON, EDITH  
ALLEN, MITCHELL  
ARNOLD, ERMA  
ARRANTS, MONROE  
BAKER, RALPH  
BARKER, HELEN  
BAIRD, MARY  
BELL, LESTER  
BERRENS, FORREST  
BARNETT, EVELYN  
BOOHER, MARGARET  
BOOHER, KENNETH  
BLACKLEY, LOUISE  
BLEVINS, CHARLES  
BROWN, MARY  
BROWN, EDITH  
BROWN, GLENNA BELL  
BOY, MARGARET  
BUCKLES, RUTH  
BYRD, EVELYN  
BELL, PAT  
CALDWELL, JOHN  
CAMPBELL, BERNARD  
CASH, JACK  
COFFEE, WILLIAM  
COWAN, CHARLES  
CALDWELL, ALICE  
CARR, MARGARET  
CAWOOD, MARION  
CLAMAN, NANETTA  
COMBS, GAYNELLE  
COMBS, MILDRED  
COOPER, OGOOL  
DARTER, HOWARD  
DAVIDSON, HAYNES  
DEW, GIBSON  
DENTON, EARLYNE  
DORIOT, KATHERINE  
EMMERT, RUTH  
FAUST, W. B.  
FELTY, J. E.  
FLEENOR, EARL  
FLEENOR, EUGENE  
FOGARTY, TOM  
FRANKLIN, MILTON

GALLIHER, GEORGE  
GLOVER, BILL  
GODSEY, FRED  
GRAY, NELLIE  
GRAY, NILES  
GREEN, RUTH  
GURLEY, ANNA PEARL  
HAGAN, SALOME  
HARKLEROAD, ADRIAN  
HATCHER, IRVIN  
HAWKINS, CHARLES  
HAWKINS, ELIZABETH  
HAWKS, GEORGIA LEE  
HICKS, KENNETH  
HICKS, OZELLA  
HOWARD, LAPITTE  
HULL, LEROY  
JOHNSON, WINFORD  
KING, CLYDE  
KING, HUGH  
LATTURE, ANNE  
LEGG, MILDRED  
LEONARD, IRENE  
LESLIE, JOE  
LINDAMOOD, VERNA  
LONG, EDNA  
LOVING, H. P.  
MANESS, CLYDE  
MARCY, HERBERT  
MCGHEE, CATHERINE  
MCNEW, T. C.  
MILLER, FLOATIE  
MORELAND, LOUISE  
MOORE, HAZEL  
MORREL, WILLIAM  
MORTON, FRANK  
NEAL, BILLY  
NEEL, LOUISE  
NIDIFFER, MARY  
O'DELL, ALICE  
O'DELL, RUBY  
O'DELL, RUTH  
OWEN, BUELL  
PHIPPS, HUGH  
PHIPPS, LOUIS  
POORE, ORVILLE  
PRESLEY, DARIUS

PHILLIPPI, VIRGINIA  
POORE, LEONA  
RAWN, JOHN  
RHEA, JOE  
RINGLEY, JAMES  
ROBERTS, EVAN  
ROLLINS, EDWARD  
RICHARDSON, EDNA  
ROLLINS, ELIZABETH  
RUTHERFORD, ADA  
SENER, BRADLEY  
SELLS, MARGARET  
SHANKEL, VIRGINIA  
SHELL, ANNA LAURIE  
SHELL, DOROTHY  
SHIREFFS, ISABEL  
SMITH, HELEN  
SMITH, KATHERINE  
SNODGRASS, JOSEPHINE  
SOLOMON, DOROTHY  
SPARGER, INA  
STATZER, IONA  
STICKLEY, JEAN  
STOUFFER, MARY JANE  
SWINEY, GENEVA  
STOPHEL, J. L.  
TAYLOR, MABEL  
THOMAS, MARY VIRGINIA  
THOMAS, GRACE  
THOMAS, MAURICE  
TRAMMELL, GEORGE  
VINEYARD, GLENN  
WEAVER, INA  
WEAVER, CLARE  
WEAVER, MARGARET  
WEBB, EDYTHE  
WHITTAKER, MARJORIE  
WOLFE, KATHERINE  
WOOD, JANE  
WYMAN, ELOISE  
WALSH, ARVEL  
WATSON, FRANK  
WEAVER, ERNEST  
WHITE, THOMAS  
WILKERSON, JAMES  
WILSON, BRADY  
WILLIAMS, JAMES



## Sub-Freshman Class

Miss LYNN, Sponsor

### FALL TERM—8-A

FRANCES RICHARDS, *President*  
 JUNIOR PELTIER, *Vice-President*  
 MARGARET TORBETT, *Secretary*  
 JAMES REPASS, *Treasurer*

### FALL TERM—8-B

CARL PHIPPS, *President*  
 FARA GOODMAN, *Vice-President*  
 ELIZABETH COOKE, *Secretary*  
 DAVID HENINGER, *Treasurer*

### SPRING TERM—8-A and 8-B

ROLLIN POST, *President*  
 MARY JARRETT, *Vice-President*

DOROTHY McCLELLAN, *Secretary*  
 HAMP RICHARDSON, *Treasurer*

ADAMS, RANDALL  
 AGER, LEWIS  
 ALLISON, J. R.  
 ASH, MARGARET  
 ASHLEY, MILDRED  
 BAINS, ERNEST  
 BAINS, NORA  
 BARR, CURTIS  
 BARR, LOIS  
 BAUMGARDNER, FRANCES  
 BAUMGARDNER, MORRIS  
 BENNETT, WILLIAM  
 BOYD, MILDRED  
 BOY, LOUISE  
 BRADDOCK, DAVID  
 BRAY, EDITH  
 BROWN, ETHEL  
 BUCKELL, THELMA  
 BUCKLES, ERNEST  
 CALDWELL, ANN  
 CALLAHAN, ELIZABETH  
 CARRIER, WALLACE  
 CECIL, JOSEPHINE  
 CHILDRESS, MARGARET  
 CLAYMAN, HOWARD  
 COOKE, ELIZABETH  
 COWAN, ROBERT  
 CROSS, MARY LYNN  
 CUDDY, LYNN  
 CUDDY, RUBY  
 FINKS, THOMAS  
 FLETCHER, EUGENE  
 FORD, STANLEY  
 FRANCES, GLADYS  
 FRAZIER, PAT  
 FURLOW, BILLY  
 GAMMON, GEORGE  
 GILLOPIE, CHARLOTTE  
 GODSEY, IVAN  
 GOODMAN, JOHN  
 GLOVER, RUTH  
 GRAY, MILDRED  
 GRAYSON, STACEY  
 GREER, PAULINE  
 HAGY, MARVIN  
 HARKLEROAD, HELEN  
 HARR, CLIFTON  
 HARRIS, LOUISE  
 HART, MARGARET  
 HAYES, RUBY

HAYES, MARY  
 HICKAM, IMOGENE  
 HICKS, J. C.  
 HICKS, J. R.  
 HICKS, J. W.  
 HILTON, ANNA RUTH  
 HILTON, EMMETT  
 HOBBS, VERNON  
 HODGE, JANE  
 HOGSETT, CHARLES  
 HOLT, W. H.  
 HUNIGAN, LYLE  
 HUNIGAN, RAY  
 HORNER, DOROTHY  
 HYDE, IRENE  
 JARRETT, MARY  
 JENKINS, JEANNETTE  
 JOHNS, JULIA  
 JONES, HELEN  
 KEESLING, GLADYS  
 KELLEY, MARGARET  
 KING, NANCY  
 KING, ROBERT  
 KYLE, W. T.  
 LEE, MARY  
 LESLIE, EVELYN  
 LOWE, EARL  
 LOWE, EVELYN  
 LOWE, HAVEN  
 LOWRY, CHESS  
 LUIKARD, HELEN  
 MASSENGIL, NORMAN  
 MCBROOM, WALTER  
 McCLELLAN, CHARLES  
 McCLELLAN, SHERMAN  
 McCLELLAN, VERGIL  
 MCGHEE, BARCLAY  
 McNEW, CHARLES  
 MILLER, CHARLES  
 MILLER, EUGENE  
 MORLEY, KERMIT  
 MORRELL, S. T.  
 MOTTERN, GEORGE  
 O'DELL, GLADYS  
 O'DELL, JOE  
 O'DELL, JANIE BELL  
 O'DELL, SAM  
 ODUM, WALLACE  
 ORFIELD, JUSTIN  
 PARRISH, VIRGINIA

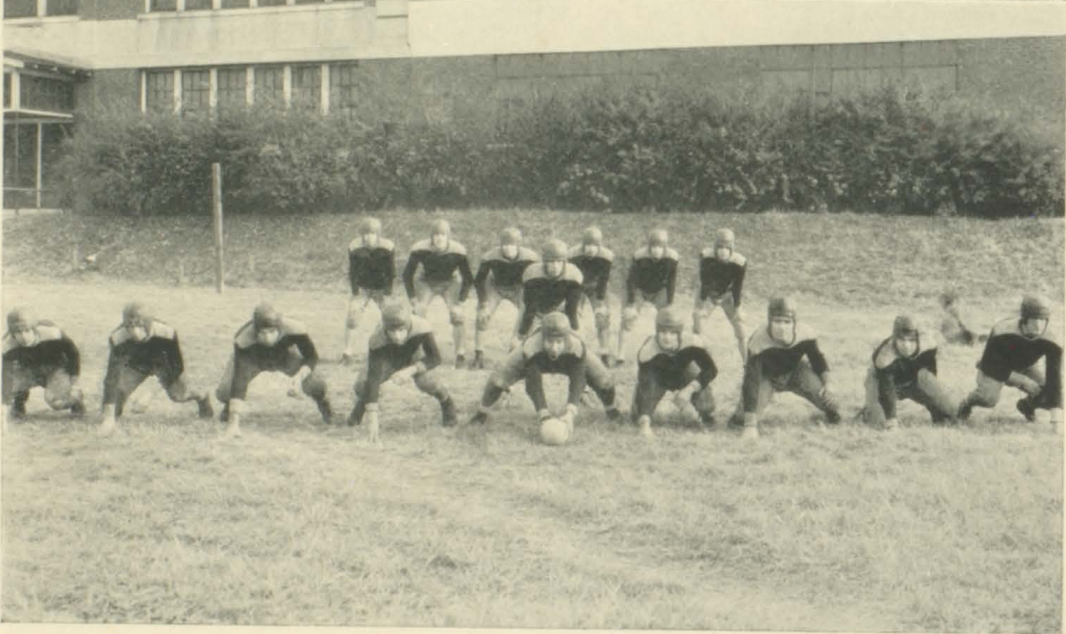
PELTIER, JUNIOR  
 PETERS, FRANCES  
 PHIPPS, BERYL  
 PHIPPS, CARL  
 PHIPPS, MARY JEWEL  
 PHIPPS, J. C.  
 POST, ROLLIN  
 POWERS, DOROTHY  
 QUALES, RALPH  
 REED, JAMES  
 REPASS, JAMES  
 RHEA, JAMES  
 RICHARDS, FRANCES  
 RICHARDSON, HAMPTON  
 RINGLEY, LUCILLE  
 ROBERTS, LOUISE  
 ROSS, BELLA  
 RAWN, RUTH  
 RUTHERFORD, BRUCE  
 RUTHERFORD, WOODROWE  
 SAFIR, CHARLOTTE  
 SHULER, HELEN  
 SHELTON, MARTHA  
 SHINN, ELIZABETH  
 SHUMAKER, HOWELL  
 SISK, ARTHUR  
 SNODGRASS, ANNIE LEE  
 SPARGER, ELLEN  
 SPARGER, JACK  
 SMALLING, ROSE  
 SMITH, HAL  
 STONE, MARION  
 SWINEY, LUCILE  
 SWINEY, OSCAR  
 TALLEY, MARION  
 THOMAS, JOHN  
 THOMAS, UNA  
 TIPTON, REBA  
 TORBETT, MARGARET  
 UMBERGER, ELEANOR  
 WAGNER, EARL  
 WALSH, DELNO  
 WAMPLER, LOUELVIA  
 WHITE, AUDREY  
 WHITTAKER, JUNIOR  
 WHITTAKER, SIDNEY  
 WILSON, EDWIN  
 WILSON, RAY  
 WOLFE, MAY  
 WYATT, HELEN





ATHLETICS





## Football Review

1931

Coach Harry Thayer, beginning his first year as mentor at Tennessee Hi, started the 1931 football season off with a bang September 1, with approximately fifty boys reporting for duty. The greatest problem Coach Thayer had to face was to plug up the holes left by those men who graduated the term before. The opening exercises dealt with fundamentals, the knowledge of which determines the success of a football team. By the beginning of the second week the squad was hard at work in preparation for the opening game with Emory and Henry Frosh, September 26.

With Esser, O'Dell, and Maness paving the way, the Vikings were able to defeat the Frosh to the tune of 26-0. Captain Owen, Dalton and Shoemaker featured the home team's defense.

On October 2, the Tennessee Hi Vikings met Erwin on Tenneva Field. With a spectacular Rover Boys' climax, Tennessee's fighting eleven marched sixty yards for a touchdown in final minute and half of thrilling game. Although outweighed, the Tennesseans outcharged the visitors off their feet to win, 6-0. This marked the first Big Five conference foe to go down in defeat. In the line, Ray, Owen, Fleenor and Shoemaker were outstanding, while in the backfield, Tankersley, Esser and O'Dell were shining lights.

On October 9, Tennessee Hi journeyed to Morristown for their first game of night football. Morristown tried to repeat what they had done in former years, but were greatly disappointed. They fell before Tennessee, 6-0. The ball-boys remained in Morristown overnight and then journeyed to Knoxville where they attended the Tennessee-Mississippi game.

October 16 found Coach Thayer's squad in Johnson City battling Coach Farmer's eleven. Although greatly outweighed, Tennessee Hi came from behind to win by a score of 6-12. Ray and Whittaker played a beautiful game in the line and were supported by Harrold, Esser and O'Dell in backfield.

Tenneva Field was the scene of a battle royal, October 23, when Kingsport invaded the home town and took back the bacon by a 6-13 score. Forever and ever remember the sparrow.

The Tennessee Hi Vikings journeyed to Elizabethton the following week, October 30, and suffered a 12-0 defeat from the Betsy warriors. Here's to you, Betsy, you played a clean game.

Mountain City was next in line, arriving November 6, but departing soon afterwards with a two-touchdown defeat. How they fought was another question, but they could not stand up under the hard-charging Tennessee outfit.

Tennessee Hi battled the strong Central Hi of Knoxville here November 11. Although the score was 19-0 in favor of the visitors, Tennessee Hi fought well until the final whistle.

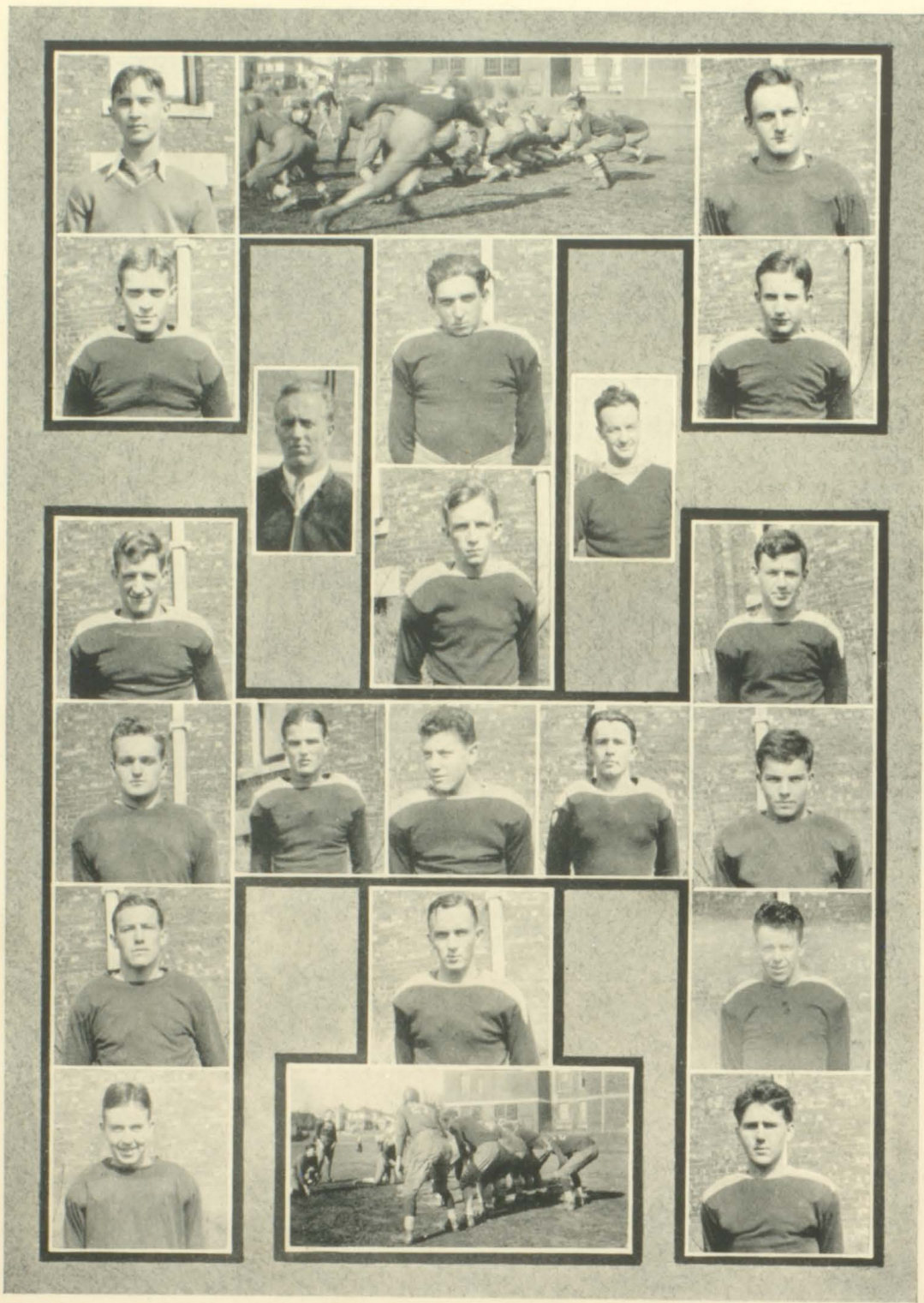
The day of the big game finally arrived, and on November 20 both Tennessee and Virginia were tensely awaiting the opening whistle. Tennessee time after time threatened the Orange and Black goal, but never succeeded in chalking up a marker. In the last half Virginia went across the Tennessee goal, making it 6-0. Tennessee never gave up, and her dreams were almost realized when Fogarty snatched up a blocked placement and raced 85 yards for a touchdown, only to have the play called back. The game ended a few minutes later. Tennessee Hi tied for second place in the Big Five Conference.

The 1931 football season was officially brought to an end by the annual banquet made possible by the P. T. A. All members of the squad and their girl friends attended in addition to the members of the school board and city officials.

## Football Letter-men

HENRY WHITTAKER  
JACK FOGARTY  
JAMES ELLENBURG  
HUBERT HUNT  
WARREN FLEENOR  
JACK BARKER  
JAMES FORGEY  
ADRIAN SHUMAKER  
W. A. RAY  
HUBERT OWEN, *Captain*

LOUIS PHIPPS  
EDDIE ESSER  
S. L. O'DELL  
CLYDE MANESS  
CYRIL COFFEY  
JUNIOR HARROLD  
ROBERT RUTHERFORD  
W. S. TANKERSLEY  
HERBERT MARCY, *Manager*  
MR. THAYER, *Coach*





## *Basket-ball Letter-men*

EDDIE ESSER, *Captain*

BOB SMITH

JACK FOGARTY

BILL BOYD

W. S. TANKERSLEY

ROBERT HARROLD

DUWARD NEAL

WALTER NUCKOLLS

JACK CASH

JUSTIN ORFIELD

JAMES ELLENBURG, *Manager*

MR. THAYER, *Coach*

## Basket-ball Review

1931-1932

Coach Thayer issued the annual call for basket-ball November 28. About fifteen men reported for practice. Six of the eight lettermen of last year were unable to play due to injury or ineligibility. Ed Esser was elected captain to succeed Short Pettigrew.

December 9, the Vikings defeated Gate City, 21-14, on the home floor. Tennessee next defeated Wallace twice in a row—19-18, 30-24, and Blountville was beaten, 29-11. Tennessee lost her first game to Gate City, 29-23, in a closely contested game.

The first Big Five game was with Elizabethton. The Vikings, in a thrilling finish, featuring Booher and Orfield, finally won to the tune of 23-27. Then Tennessee dropped three Big Five games in a row, Johnson City, Erwin and Kingsport beating them.

Tennessee defeated Elizabethton the second time, 26-22, and on the next night defeated Virginia, Hi, 31-20. Tennessee then defeated Virginia again, 23-16. Tennessee journeyed to Knoxville and dropped a hotly contested game to Central High School, 36-35.

In the East Tennessee Tournament the Vikings defeated Falls Branch, but were eliminated by Kingsport in a hard and close game.

### SCORES

Tennessee . . . . . 21	Gate City . . . . . 14
Tennessee . . . . . 19	Wallace . . . . . 18
Tennessee . . . . . 30	Wallace . . . . . 24
Tennessee . . . . . 29	Blountville . . . . . 11
Tennessee . . . . . 29	Gate City . . . . . 23
Tennessee . . . . . 23	Elizabethton . . . . . 27
Tennessee . . . . . 19	Erwin . . . . . 20
Tennessee . . . . . 20	Kingsport . . . . . 29
Tennessee . . . . . 18	Johnson City . . . . . 25
Tennessee . . . . . 26	Elizabethton . . . . . 22
Tennessee . . . . . 29	Kingsport . . . . . 32
Tennessee . . . . . 36	Johnson City . . . . . 18
Tennessee . . . . . 25	Erwin . . . . . 24
Tennessee . . . . . 31	Virginia . . . . . 20
Tennessee . . . . . 23	Virginia . . . . . 16
Tennessee . . . . . 35	Knoxville . . . . . 36
Tennessee . . . . . 32	Falls Branch . . . . . 12
Tennessee . . . . . 27	Kingsport . . . . . 34
532	406



KATHERYN GRISARD  
GIRLS  
ATHLETIC DIRECTOR.



KING AND QUEEN OF PHYSICAL EDUCATION  
KAT KEESLING - BUD PHIPPS 1931



JULIA RHEA  
MANAGER OF  
INTER-MURAL COUNCIL



PHYSICAL EDUCATION DISPLAY, MAY 8, 1931



PHYSICAL EDUCATION PARADE



FRESHMAN  
BASKET-BALL TEAM



ELOISE WYMAN  
WINNER  
GIRLS INDIVIDUAL RACES



SOPHOMORE  
BASKET-BALL TEAM



FRESHMAN  
WINNERS CLASS RELAY



TUMBLERS AND WAND-DRILLERS



SENIOR  
BASKET-BALL TEAM

## *Review of Girls' Athletics*

The intra-mural program which was introduced this year by Miss Kathryn Grisard, girls' athletic director, has proved both successful and entertaining to the girls interested in athletics.

The program is based on a point system: those earning a total of one hundred points are entitled to a letter, and those making only seventy-five points receive a monogram.

Tournaments between the classes are held for soccer, basket-ball, volley-ball, tennis and playground ball. Members of the team receive ten points for each sport in which they make the team.

Participants are awarded five points for tumbling, foul-pitching, track and field events, horse-shoe pitching, hiking, skating, and bicycling. Captains and managers of the teams receive five extra points. The individuals making an average of ninety on their academic work receive fifty per cent of the number of points they have earned that semester added to the number they already have. Those making an average of eighty-five receive twenty-five per cent.

After the adoption of the intra-mural system last fall, a representative was chosen from each class to form an advisory committee called the Intra-Mural Council. Elizabeth Lowry, representing the Senior class; Louise Harklerode, the Junior class; June Smith, Sophomore; Eloise Wyman, Freshman, and Gladys Francis, Sub-Freshman, compose the Council. Julia Rhea was elected manager of the Council because of her ability in athletics and her qualities of leadership.

A soccer tournament was scheduled for late fall, but due to bad weather conditions, it was postponed until spring.

Basket-ball was then begun. Captains elected for the class teams were: Augusta Lee Beidleman, Senior; Eula Massengil, Junior; Marjorie Poe, Sophomore; Helen Smith, Freshman, and Gladys Francis, Sub-Freshman. After practice had been under way for four weeks, a Round-robin tournament was held with the following results:

Seniors.....27	Juniors..... 4	Juniors..... 4	Frosh.....34
Seniors.....26	Sophs.....16	Juniors..... 6	Subs.....27
Seniors.....10	Frosh.....12	Sophs.....18	Frosh.....13
Seniors.....21	Subs.....13	Sophs.....26	Subs.....18
Juniors..... 5	Sophs.....54	Frosh.....20	Subs.....12

The Seniors, Sophomores and Freshmen with three wins and one loss each tied for first place. In an elimination tournament between the three, the Freshmen defeated the Seniors, 17-13, and the Sophs beat the Freshmen, 21-8, thus giving the championship to the Sophomores.

Julia Rhea, Mary Keesling, June Smith, Alice O'Dell and Gladys Frances were individual high scorers, with Julia Rhea ringing up fifty points in four games.

Volley-ball was the next sport to get under way. Julia Rhea captained the Senior team, Katherine Wood the Juniors, Kathleen Rutherford the Sophomores, Helen Smith the Freshmen, Maxie Poe the Sub A team, and Anna Ruth Hilton the Sub B team. In the tournament each team played every other team two out of three games. The Seniors, Sophomores and Sub B teams tied for first place. In a play-off of the tie, the Subs won from the Seniors and the Sophomores.

Tournaments in playground ball, tennis, and soccer are to be played in the late spring, with horse-shoe pitching, track and field events, hiking, skating, and bicycling still remaining on the program.

The credit for such a successful year in athletics has been given to Miss Grisard, who has earned the praise and admiration of all interested in the intra-mural program.



ORGANIZATIONS





## All-Students' Club

MR. TYLER, *Sponsor*

### FALL TERM

BOB SMITH, *President*  
HOWARD PHIPPS, *Vice-President*  
MARY KEESLING, *Secretary*  
MACK FURLOW, *Treasurer*

### SPRING TERM

JACK BARKER, *President*  
ROBERT SMITH, *Vice-President*  
AUGUSTA LEE BEIDLEMAN, *Secretary*  
JUNE ALLEN, *Treasurer*

ALLEN, JUNE  
BARKER, JACK  
BEIDLEMAN, AUGUSTA LEE  
BRADDOCK, DAVID  
CALDWELL, GENEVIEVE  
EMMERT, NANCY  
FLEENOR, DRYDEN  
FURLOW, MACK  
GOODMAN, OLA

JOHNS, JULIA  
KEESLING, MARY  
KESNER, KATHERINE  
LOWE, EARL  
MONTGOMERY, MARGARET  
MORTON, FRANK  
O'DELL, S. L.  
OWENS, HUBERT

OWENS, NELL  
PHIPPS, CARL  
PHIPPS, HOWARD  
RESER, RICHARD  
RICHARDS, FRANCES  
SCHERER, WALLACE  
SNAPP, L. B.  
SMITH, ROBERT  
WILSON, RAY



## Public Speaking Club

MR. FARTHING, *Sponsor*

### Oratory

#### FALL TERM

LOUIS KING, *President*  
JOE LESLIE, *Vice-President*

#### SPRING TERM

GEORGE T. DAVIS, *President*  
BILL KING, *Vice-President*

BACHMAN, ROGER  
LESLIE, CARL  
LOVE, H. L.  
MORRISON, TURNER  
STULTZ, ERNEST  
WOLFORD, JAMES

ASHE, HUGH  
BUCKLES, MARY DE  
FLEENOR, DRYDEN  
FOGARTY, JACK  
LESLIE, JOE  
LEVINE, JENNIE

### Debating

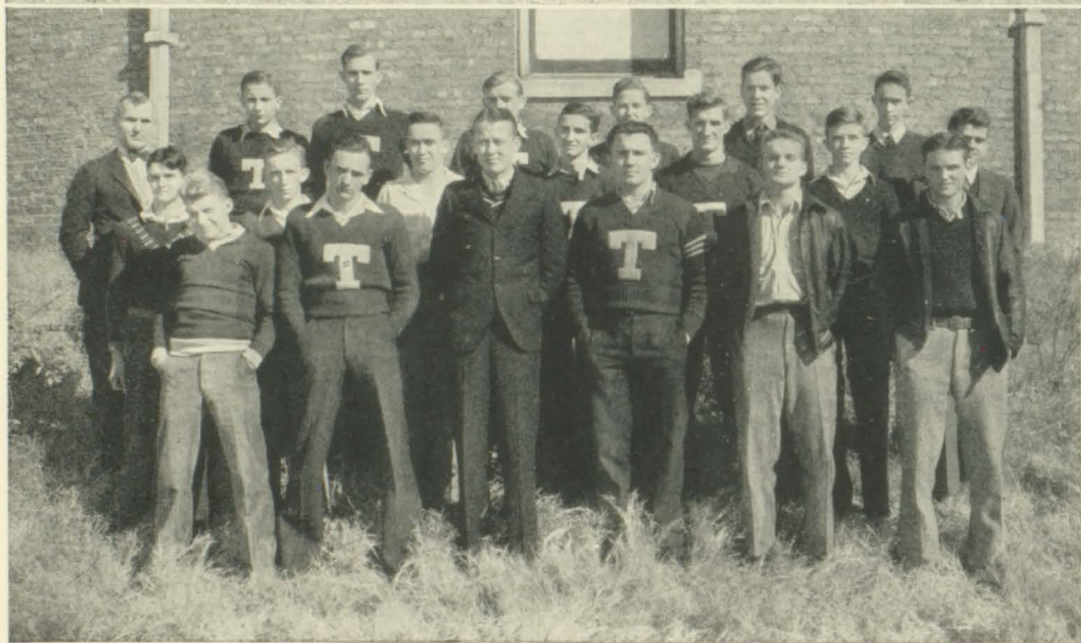
#### FALL TERM

CHARLES KINCH, *President*  
RICHARD RESER, *Vice-President*

#### SPRING TERM

JACK DORIOT, *President*  
TURNER MORRISON, *Vice-President*

McBROOM, WALTER  
POORE, ORVILLE  
SNAPP, L. B.  
STANSBURY, LOUISE  
TIPTON, BILL  
WASSOM, RUTH



## Girls' Hi-Y Club

Mrs. MARNEY, *Sponsor*

### FALL TERM

JUNE ALLEN, *President*  
AGNES KING, *Vice-President*  
LOUISE MCGOLDRICK, *Secretary*  
ELIZABETH LOWRY, *Treasurer*

### SPRING TERM

AGNES KING, *President*  
MARGARET LINDAMOOD, *Vice-President*  
FLORENCE FRANKLIN, *Secretary*  
JULIA RHEA, *Treasurer*

ALLEN, JUNE  
ALLEN, MARY KATHERINE  
BEIDLEMAN, AUGUSTA LEE  
BOOHER, ELIZABETH  
CLARDY, MARY  
COOKE, KATHRYN  
EGGERS, BONITA  
ELLENBURG, FRANCES  
FRANKLIN, FLORENCE  
EMMERT, NANCY  
KEESLING, MARY  
KING, AGNES

KESNER, KATHERINE  
LOWRY, ELIZABETH  
LANE, CLAUDIA  
MCGOLDRICK, LOUISE  
LINDAMOOD, MARGARET  
MASSENGILL, EULA  
RHEA, JULIA  
SENER, JOSEPHINE  
SENEKER, SARAH  
WOOD, KATHERINE  
WOOD, LUCY  
WOOLSEY, KATHERINE



## Boys' Hi-Y Club

Mr. EGGERS, *Sponsor*

### FALL TERM

JACK BARKER, *President*  
MARION WARREN, *Vice-President*  
GEORGE DAVIS, *Secretary-Treasurer*

### SPRING TERM

JOHN HUGHLETT, *President*  
CARL PETTIGREW, *Vice-President*  
GEORGE DAVIS, *Secretary-Treasurer*

JACK BARKER, *Sergeant-at-Arms*

BARKER, JACK  
DAVIS, GEORGE  
ESSER, ED  
FLEENOR, WARREN  
HARROLD, JUNIOR  
HODGE, LUTHER  
HUGHLETT, JOHN  
KING, WILLIAM  
LESLIE, CARL  
NUCKOLLS, WALTER

OWEN, HUBERT  
PETTIGREW, CARL  
PHIPPS, HOWARD  
RESER, RICHARD  
RUTHERFORD, ROBERT  
SMITH, ROBERT  
SHOEMAKER, ADRIAN  
THOMAS, NATHAN  
WARREN, MARION



## Dramatic Club

Mr. GILLINGHAM, *Sponsor*

### FALL TERM

AUGUSTA LEE BEIDLEMAN, *President*  
 MARY KEESLING, *Vice-President*  
 JUNE ALLEN, *Secretary*  
 JOSEPHINE SENTER, *Treasurer*  
 JENNY LEVINE  
 LOUISE MCGOLDRICK } *Critics*

ALLEN, JUNE  
 BAIRD, DON  
 BAKER, HELEN  
 BACHMAN, ROGER  
 BEIDLEMAN, AUGUSTA LEE  
 BOOHER, ELIZABETH  
 BOOHER, LUCY  
 BROOKS, LOVDIE  
 CALDWELL, ALICE  
 CALDWELL, GENEVIEVE  
 COLLINS, HAZEL  
 COMBS, GAYNELLE  
 COUNTS, THELMA  
 EARHART, KATHLEEN  
 FRANKLIN, LOUISE  
 GREEN, BEN

GREEN, RUTH  
 HAWKINS, CHARLES  
 HARROLD, JUNIOR  
 HUFF, MARGARET  
 JONES, SARA  
 KEESLING, MARY  
 KENSINGER, FRANCES  
 KESNER, KATHERINE  
 KING, JERE  
 LESLIE, BOB  
 LEVINE, JENNY  
 LINDAMOOD, MARGARET  
 MARCY, JOHN  
 MCGHEE, KATHERINE  
 MCGOLDRICK, LOUISE

### SPRING TERM

BOB SMITH, *President*  
 JUNE ALLEN, *Vice-President*  
 GENEVIEVE CALDWELL, *Secretary*  
 AUGUSTA LEE BEIDLEMAN, *Treasurer*

MONTGOMERY, MARGARET  
 NIDIFFER, MARY  
 OSBORNE, JOE  
 OWENS, MARGARET  
 OWENS, NELL  
 PHARR, SARA MOORE  
 RINGLEY, JAMES  
 ROLLINS, EDWARD  
 SCHERER, WALLACE  
 SENTER, JOSEPHINE  
 SMITH, ROBERT  
 STANSBERRY, LOUISE  
 THOMAS, MARY VIRGINIA  
 TIPTON, ELIZABETH  
 WHITTAKER, MARJORIE  
 WITT, BEULAH



## Girls' Chorus

Mrs. HAYES, *Sponsor*

### FALL TERM

MARGARET MONTGOMERY, *President*  
 ALICE CALDWELL, *Vice-President*  
 RUTH WASSOM, *Secretary*  
 HELEN BAKER, *Treasurer*  
 GAYNELLE COMBS, *Librarian*

ARNOLD, MILDRED  
 BAKER, HELEN  
 BLADES, MARTHA  
 BOOHER, MARGARET  
 BOY, LOUISE  
 BROWN, GLENNA BELL  
 BUCKLES, RUTH  
 CALDWELL, ALICE  
 COMBS, GAYNELLE  
 COMBS, ALICE  
 COMBS, MILDRED  
 DENTON, EARLYNE  
 EMMERT, NANCY  
 HART, MARGARET  
 HAYES, RUBY

HAYES, MARY ELIZABETH  
 LEE, MARY  
 LEGG, MILDRED  
 LOWE, EVELYN  
 MONTGOMERY, MARGARET  
 NEAL, LOUISE  
 NEAL, ISABELLE  
 OWEN, BUELL  
 PAINTER, CARRIE  
 RAY, LEOLA  
 RINGLEY, LUCILE  
 ROBERTS, LOUISE  
 ROLLINS, ELIZABETH  
 PHIPPS, BERYL

### SPRING TERM

MARGARET OWENS, *President*  
 KATHERINE WOLFE, *Vice-President*  
 MILDRED LEGG, *Secretary*  
 GAYNELLE COMBS, *Treasurer*  
 RUTH BUCKLES,  
 MARGARET MONTGOMERY } *Librarians*

SHELL, SARAH  
 SHULER, HELEN  
 SMALLING, ROSE  
 SOLOMON, ELEANOR  
 SWINEY, GENEVA  
 THOMAS, ELIZABETH  
 THOMAS, MARY VIRGINIA  
 WEBB, EDYTHE  
 WHITTAKER, ELSIE  
 WHITTAKER, MILDRED  
 WILSON, PEARL  
 WOLFE, KATHERINE  
 OWENS, MARGARET  
 KELLEY, MARGARET  
 O'DELL, GLADYS



# Literary Societies of the Eighth Grade

SOCIETY A                      SOCIETY B                      SOCIETY C  
Miss MASSENGILL, *Sponsor*      Mrs. FERGUSON, *Sponsor*      Miss WINGFIELD, *Sponsor*

## OFFICERS

*President* . . . . . DAVID BRADDOCK . . . . . JULIA JOHNS . . . . . FRANCES RICHARDS  
*Vice-President* . . . . . ELIZABETH COOKE . . . . . CHARLES HOGSETT . . . . . JUNIOR PELTIER  
*Secretary* . . . . . FARRA GOODMAN . . . . . MARY JARRETT . . . . . MARGARET TORBETT  
*Treasurer* . . . . . BILLY FURLOW . . . . . DOROTHY HORNER . . . . . JAMES REPASS  
*Critic* . . . . . ETHEL BROWN



## French Club

Miss DRYDEN, *Sponsor*

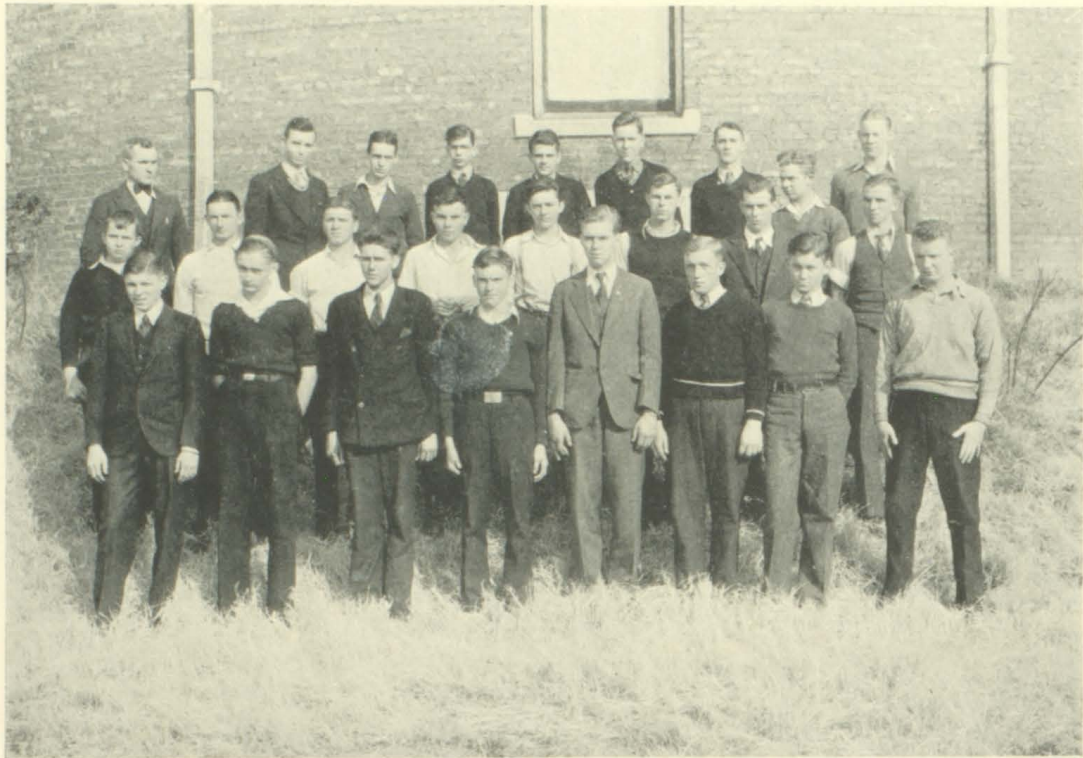
FALL TERM  
GENEVIEVE CALDWELL, *President*  
BRUCE GRAHAM, *Vice-President*  
UNA MAE ROGERS, *Secretary-Treasurer*

SPRING TERM  
MACK FURLOW, *President*  
KATHLEEN EARHART, *Vice-President*  
RUTH WASSOM, *Secretary-Treasurer*

BOOHER, LUCY  
BUCKLES, MARY DE  
CALDWELL, GENEVIEVE  
CAPPEL, PEGGY  
CHILDRESS, LUCILLE  
COUNTS, THELMA  
COWAN, TAYLOR  
DICKINSON, VIRGINIA  
EARHART, KATHLEEN  
EVERSOLE, KATHERINE  
FLETCHER, ALICE  
FOGARTY, JACK  
FURLOW, MACK  
GRAHAM, BRUCE  
GRAY, THELMA  
GREEN, BENJAMIN  
HARKLEROADE, LOUISE  
HUFF, MARGARET  
HUNT, HUBERT

KENSINGER, FRANCES  
KING, LOUIS  
LEVINE, JENNIE  
MCGOLDRICK, H. P.  
MONTGOMERY, MARGARET  
OSBORNE, JOE  
PEOPLES, DAVID  
PHARR, SARAH  
POORE, HAZEL  
RICHARDS, CHARLES  
ROGERS, UNA MAE  
SCHERER, WALLACE  
SHOEMAKER, HOWARD  
SIMPKESS, JACK  
SOLOMON, ELEANOR  
SOLOMON, EVELYN  
THOMAS, ELIZABETH  
WASSOM, RUTH





## Industrial Arts Club

Mr. EGGERS, Sponsor

### FALL TERM

DRYDEN FLEENOR, *President*  
GEORGE DAVIS, *Vice-President*  
TAYLOR COWAN, *Secretary*  
JAMES WOLFORD, *Treasurer*

ASH, HUGH  
BERENS, FORREST  
BOY, REEVE  
CAMPBELL, BILL  
CHILDRESS, HARRY  
COWAN, TAYLOR  
CRUMLEY, JR.  
DAVIS, GEORGE  
FAUST, W. B.  
FLEENOR, DRYDEN  
FORD, RALPH

FORGEY, JAMES  
FOGARTY, TOM  
FRANKLIN, TYLER  
HAWKINS, CHARLES  
HODGE, LUTHER  
HUNT, HUBERT  
JESSEE, MARSHALL  
KAYLOR, BURDETTE  
KING, LOUIS  
LYNCH, MARTIN  
MCKEE, KELLY  
MORLEY, KERMITT

### SPRING TERM

LOUIS KING, *President*  
CHARLES RICHARDS, *Vice-President*  
JAMES WOLFORD, *Secretary*  
LUTHER HODGE, *Treasurer*

RICHARDS, CHARLES  
RINGLEY, JAMES  
RUTHERFORD, ERNEST  
SHANKLE, SAM  
SMALLING, GEORGE  
STOPHEL, J. L.  
STULTZ, ERNEST  
VINYARD, GLENN  
WILKERSON, JAMES  
WILLIAMSON, CLYDE  
WOLFORD, JAMES



## Science Club

Miss SMITH, Sponsor

### FALL TERM

WALLACE SCHERER, *President*  
JACK FOGARTY, *Vice-President*  
MILDRED STONE, *Secretary*  
JULIA RHEA, *Treasurer*

ASHE, HUGH  
BARKER, JUANITA  
BARR, MARTHA  
BELL, CUSTIS  
BLEVINS, MARY  
CHILDRESS, LUCILLE  
COMBS, ALICE  
COMBS, MILDRED  
DICKSON, MILDRED  
EVERSOLE, KATHERINE  
FLEENOR, WARREN  
FLETCHER, ALICE  
FLETCHER, ELIZABETH  
FOGARTY, JACK  
FURLOW, MACK

GRAHAM, BRUCE  
GRAY, THELMA  
HARKLEROADE, LOUISE  
HOOVEN, LAWRENCE  
HUNT, HUBERT  
LANE, CLAUDIE  
MANESS, CLYDE  
MARCY, HERBERT  
MILLER, FLOATIE  
PAINTER, CARRIE  
POORE, HAZEL  
RESER, RICHARD  
RHEA, JULIA  
RICHARDS, CHARLES

### SPRING TERM

JACK FOGARTY, *President*  
RICHARD RESER, *Vice-President*  
KATHERINE WOOLSEY, *Secretary*  
WALLACE SCHERER, *Treasurer*

SCHERER, WALLACE  
SENEKER, SARAH  
SHELL, ANNA LAURA  
SHOEMAKER, HOWARD  
SIMPKESS, JACK  
STATZER, IDA  
STOCKTON, LEWIS  
STONE, MILDRED  
SWINEY, PAUL  
TIPTON, BILL  
WHITTAKER, ADA  
WOOD, JANE  
WOOD, KATHERINE  
WOOD, LUCY  
WOOLSEY, KATHERINE



## Intra-Mural Council

MISS GRISARD, Sponsor

JULIA RHEA.....	Intra-Mural Manager
ELIZABETH LOWRY.....	Senior Representative
LOUISE HARKLEROADE.....	Junior Representative
JUNE SMITH.....	Sophomore Representative
ELOISE WYMAN.....	Freshman Representative
GLADYS FRANCIS.....	Sub-Freshman Representative



## Athletic Council

MISS OWEN, Sponsor

### OFFICERS

L. B. SNAPP.....	President
ELIZABETH LOWRY.....	Secretary
BILL TIPTON.....	Bank Representative

ALLEN, MARY KATHERINE  
 ALLEN, MITCHELL  
 COOKE, KATHRYN  
 DARTER, HOWARD  
 DULANEY, FRED  
 EVERSELE, KATHRYN  
 FLETCHER, ALICE  
 FOGARTY, JACK  
 FURLOW, BILLY  
 HARKLEROADE, LOUISE  
 LESLIE, CARL  
 LINDAMOOD, KERMIT  
 LONG, EARLYN  
 LOWE, EARL  
 LOWRY, ELIZABETH  
 NEALE, DUWARD  
 NELSON, EFFA MAE

PERRY, TED  
 PHIPPS, HOWARD  
 PHIPPS, J. C.  
 RHEA, JAMES  
 ROBERTS, EVAN  
 ROBERTS, HAROLD  
 SENTER, JOSEPHINE  
 SHOEMAKER, HOWARD  
 SMITH, JUNE  
 SNAPP, L. B.  
 STONE, MILDRED  
 THOMPSON, ANNETTE  
 TIPTON, BILL  
 VANCE, WALLACE  
 WATSON, THELMA  
 WHITAKER, MARJORY  
 WOOD, KATHERINE



# Commercial Club

Mrs. KOLTINSKY, *Sponsor*

## FALL TERM

OLA GOODMAN, *President*  
 MARGARET WARREN, *Vice-President*  
 DELMER FLEENOR, *Secretary*  
 TOM O'DELL, *Treasurer*

## SPRING TERM

DELMER FLEENOR, *President*  
 GRADY LEE, *Vice-President*  
 SARAH HAMLET, *Secretary*  
 THELMA COUNTS, *Treasurer*

BARKER, WANITA  
 BELL, CUSTIS  
 BLEVINS, MARY  
 COLLINS, HAZEL  
 ELLENBURG, JAMES  
 FLEENOR, DELMER  
 FLETCHER, ALICE  
 FOGARTY, JACK  
 GLENN, MABEL  
 GOODMAN, OLA  
 GREEN, BEN  
 GURLY, VIRGINIA  
 HAMLET, SARAH  
 HILTON, MARY

HOOVEN, LAWRENCE  
 JONES, LUCILLE  
 LACY, CLYDE  
 LEE, GRADY  
 MARTIN, FRANCES  
 MORTON, LOUISE  
 MERCER, MILDRED  
 NEAL, ISABELLE  
 NELSON, EFFA MAE  
 O'DELL, MARTHA  
 O'DELL, TOM  
 OWENS, MARGARET  
 RUTHERFORD, KATHLEEN  
 SHERRIPS, ISABELLE

SMITH, GEORGE  
 SMITH, MARY LYNN  
 SOLOMON, ELEANOR  
 SOLOMON, EVELYN  
 SPARGER, LOIS  
 SPITZER, MABEL  
 SWINEY, EDGAR  
 SWINEY, PAUL  
 WARREN, MARGARET  
 WHITE, GLADYS  
 WHITTAKER, ADA  
 WILLIAMSON, CLYDE  
 WOODARD, CLAUDIA  
 YOUNG, MARY SUE



# Maroon and White

MISS BESS BROCE, *Faculty Adviser*

## EDITORIAL STAFF

NELL OWEN . . . . . *Editor-in-Chief*  
 JULIA RHEA . . . . . *Associate Editor*

## NEWS DEPARTMENT

JERE KING . . . . . *Managing Editor*  
 EDWARD ROLLINS . . . . . *Assistant Managing Editor*  
 MACK FURLOW . . . . . *Sports Editor*  
 CLAUDIA LANE . . . . . *Girl Sports Writer*  
 MARGARET LINDAMOOD . . . . . }  
 KATHLEEN EARHART . . . . . } *News Writers*  
 EULA MASSENGILL . . . . . }  
 LYNN CUDDY . . . . . }  
 LUCILLE ANDERSON . . . . . } *Literary Editors*  
 JOSEPHINE SENTER . . . . . }  
 LUCY BOOHER . . . . . } *Joke Editor*  
 ANNE LATTURE . . . . . } *Assistant Joke Editor*  
 LUCILLE CHILDRESS . . . . . }  
 THELMA GRAY . . . . . } *Feature Writers*  
 HAZEL POORE . . . . . } *Exchange Editor*  
 SARA JONES . . . . . } *Personals*  
 RUTH WASSOM . . . . . } *Alumni Editor*  
 THELMA COUNTS . . . . . } *Proof Reader*  
 OLA GOODMAN . . . . . }  
 SARAH HAMLET . . . . . } *Stenographers*  
 DONALD BAIRD . . . . . } *Secretary*

## Calendar of Events

---

### SEPTEMBER

7. Decks cleared for action.
8. Classes begin. New text-books to buy.
11. Kewpie Owen made captain of Tennessee Hi eleven.
15. The Sub-Freshmen are all wet.
16. Clubs and classes elect officers. Bob Smith made president of Student Council.
25. Our first game. Tennessee Hi, 26; Emory and Henry Freshmen, 0.
30. Dick Reser made president of Senior class.

### OCTOBER

2. Erwin Hi succumbs, 6-0.
6. June Allen interprets some real music at assembly.
9. Vikings romp on Morristown, 6-0.
12. It is Columbus Day, but nobody would know it.
15. The CADMUS Club starts its subscription campaign.
16. School out early. Johnson City defeated, 12-6.
19. Beginning of second six weeks.
21. Umgh, those tell-tale report cards.
22. Thayer gives skull practice, but—.
23. All to no avail. Kingsport won, 13-6.
26. Hi-Y takes an outing.
30. Elizabethton pigskins beat Tennessee Hi, 12-0.

### NOVEMBER

3. Boys' Hi-Y depicts Drs. Payne and Slycem.
5. Tennessee's eleven defeats Mountain City, 13-0.
6. Members of Industrial Arts Club go for an airplane ride.
10. Pictures taken for annual.
11. Armistice Day—no school.

### NOVEMBER (Continued)

13. Knoxville Hi wins over us with a score of 19-0.  
D. A. R.'s hold tree-planting ceremonies.
17. Dramatic Club presents "So You're Going to Paris."
20. The day of the big game, but Virginia won, 6-0.
24. Girls' Chorus and Tennessee Hi orchestra entertain assembly.
30. Back to school after much turkey.

### DECEMBER

1. Mack Furlow mimics Paderewski.
3. The usual torpedoes in the halls.
8. Alchemist Club demonstrates feats of scientific leger-de-main.
10. The basket-ball team wins its first practice game.
11. Industrial Arts Club studies the Hydro-Electric power plant at Watauga.
17. Blountville loses, 29-11, also we have twenty-point examinations.
18. More examinations.  
Junior Class presents "Listen to Leon."  
Incidentally, school is dismissed for Christmas holidays.

### JANUARY

4. Back again.
5. We beat Elizabethton, 27-18.
9. Erwin Hi Five floors us, 20-18.
12. Freshmen play Seniors; Sophs play Juniors.
15. More class games. Those Freshmen know basket-ball.
18. Review and plenty of it.
19. Tomorrow the exam—tonight we must cram.
22. Exams are over—some are sad—some are glad.
27. New term begins. Sub-Freshies keep the showers busy.
29. The Band goes to Johnson City.



## FEBRUARY

11. Mardi Gras entertains hundreds. It is a whaling success.
12. Kingsport team beats ours, 34-30.
19. Virginia Hi loses, 23-16.
26. Kingsport wins again, 37-21.

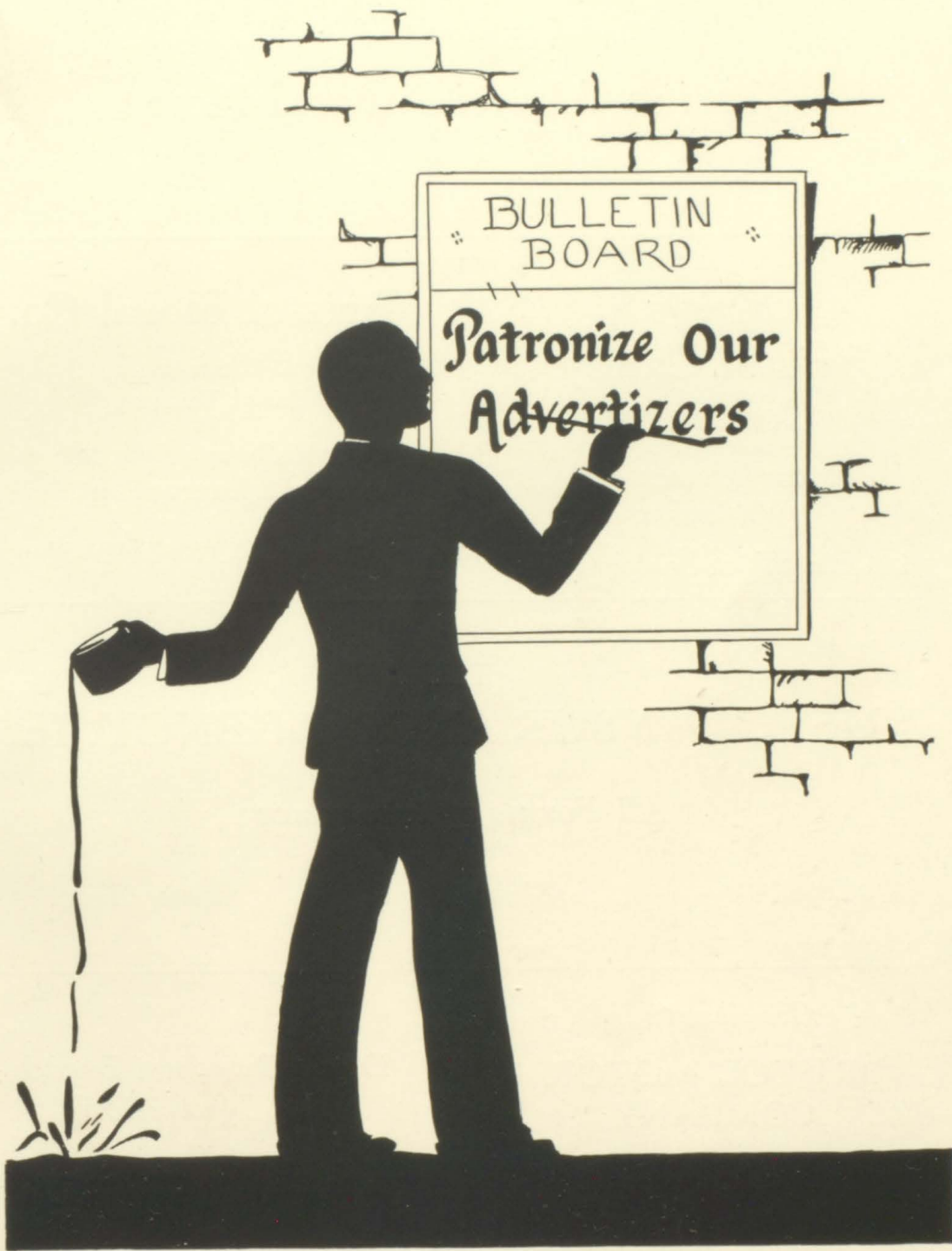
## MARCH

9. End of first six weeks.
12. Who's the new girl? "Esco" see.
14. The piano receives its centennial tuning
22. Dramatic Club presents "The Trysting Place."
24. School adjourns for the Easter season.
28. Industrial Arts Club visits Lincoln Furniture Company.
29. Tryouts for Senior Play.

## APRIL

1. April fool.
4. Operetta practice starts.
11. Spring football with Virginia, 12-6—our favor.
13. All out for baseball.
15. CADMEA goes to press.





Compliments of  
**Blevins-Akard Funeral Home**

---

Compliments of  
**Bristol Candy  
Company**  
Manufacturers and  
Wholesalers  
201 Eighth St., Bristol, Tenn.

**Bristol Floral Co.**

534 State Street  
Bristol, Tennessee

*We cordially invite you to come  
and see the flowers at any time.*

“WE GROW THEM”

---

THE  
**BRISTOL INSURANCE AGENCY, Inc.**

*All Forms of Insurance*

Phone 1495

8 Sixth Street

Bristol, Tenn.

---

Compliments of  
**BRISTOL MOTOR  
COMPANY**

“Buick Sales and Service”

516 Cumberland St., Bristol, Va.

*Don't Buy Just Bread  
Buy Nutrition*

**Hecht's Bakery**

# Inter-Mountain Telephone Company

*Wants You for a Friend*



“Long-distance” has a personal appeal that no letter can convey. It is like being there in person.

When in need of Shoes you will find BETTER VALUES at



MARION COWAN, *Proprietor*

*The Coffee and Tea Shop*

**C. D. Kenny Co.**

715 State St.

Our NORWOOD COFFEE has no equal

*Free City Delivery*

Phone 213

Good Pop Corn  
Newspapers and Magazines  
Candies, Sodas  
Cigars

**Joe Lippo**

On The Corner Penn. Avenue  
and State Street

**Southern Ice Cream  
Company**



*Southern Maid  
Ice Cream*

# Minor's . 24

**BRISTOL TYPEWRITER CO., Inc.**

*Office Outfitters*

Bristol, Tenn.

*"Say It With Flowers"*

*from*

**SMITH FLORAL COMPANY, Inc.**

Day Phone 523      M. H. SMITH, *Manager*      704 State Street  
Night Phone 1602-R      Bristol, Tennessee      Member F. T. D.

---

*Compliments of*

**Piggly-Wiggly Company**

---

MISS OWEN (working in her backyard flower garden): "I wonder why those bees fly around so frantically."

MARY KEESLING: "They probably have hives."

---

**QUALITY TAILORS, Bristol, Tenn.**

*Suit or Top Coat, \$22.50, Made to Order*

---

**Carmack Coal Co.**

*Best Grade  
Domestic Coals*

Yard, 34 Third Street  
Phone 485

**Stone Lumber Co.**

*Incorporated*

*Established 1894*

*Lumber and Mill Work  
and Builders' Supplies*

Office—Third and Fourth Streets

## A GOOD DRUG STORE

---

*The Good Drug Store of today is more than a drug store. Although prescriptions are the dominating part of a drug store, nevertheless, you can find not a few, but many of the necessities of every home and individual need. The Drug Store is one of the leading factors in the progressiveness of any community.*

### BUNTING'S

*"Bristol's Leading Drug Store Since 1869"*

---

**W**HERE else can boys and girls in their teens find wearables in such variety as at KING's. Specialized buying for individualized departments makes for satisfaction in details more important now than ever before.

Now, more than ever, style, fit, and quality are requisites for correct wearables for both boys and girls of the teen ages. That's why boys and girls, as well as their parents, know KING's as a style center. That's why so many boys and girls find at KING's just what suits them best, just what distinguishes them as being well dressed for every occasion.

**The H. P. King Company**  
BRISTOL

**MOORE-EARHART Co., Athletic Goods**

647 State Street, Bristol, Virginia

---

**L. R. PETERS**

35 Sixth Street

*Staple and Fancy  
Groceries*

Phone 120

---

Your Films Can Be Developed But Once

*We Do It Right*

**Kelly & Green**

514 Cumberland Street

*Kodaks, Films, Photo Finishing, Enlarging, Framing*

---

*Compliments of*

**L. C. KING  
MANUFACTURING  
COMPANY**

*Manufacturers of  
Pointer Brand Overalls  
and Work Shirts*

**Faucette Company  
China Store**

806-808 State Street

*About Everything in China  
and Kindred Lines*

*Special Values in Hosiery for Men,  
Women and Children*

Wholesale and Retail

---

**Mitchell-Powers Hardware Co., Inc.**

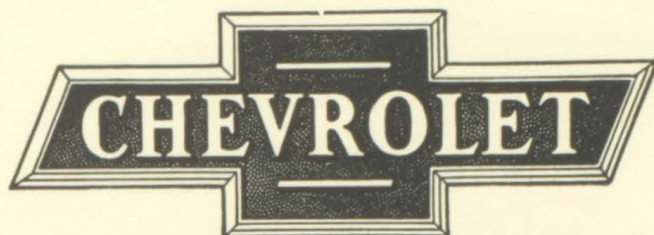
1880-1932

Fifty-two Years of Honorable Service

*Distributors for Lyric Radios, House Furnishings  
Paints, Hardware, Mill and Mine Supplies  
and Kindred Lines*

Bristol, Virginia

*The Great American Value*



**DRUGAN MOTOR COMPANY**

Seventh and Shelby Streets  
Bristol, Tenn.

---

CLERK: "That is a genuine black skunk's fur coat."

KAT COOKE: "Is it shower-proof?"

CLERK: "Did you ever see a skunk carry an umbrella?"

---

*The 1931-1932 Board of Education  
extends greetings to all members of  
The Senior Class*

MRS. W. R. STONE, *President*  
J. E. ARRANTS, *Vice-President*  
J. G. WYMAN, *Secretary-Treasurer*  
C. G. KING                      L. S. MCGHEE  
G. T. THOMAS

---

*"Say It With Flowers"*  
**Fairmount Gardens**  
*Florists*

*Decorations for Dinners and  
Receptions, Cut Flowers  
Floral Designs, etc.*

Phone 952      BRISTOL, TENN.-VA.  
Member Florists' Telegraph Delivery Association  
Flowers delivered by telegraph anywhere



*Clean Speech, Clean Living, Clean Scholarship  
Clean Athletics*

**GIRLS' AND BOYS' HI-Y**

---

Compliments of  
**H. H. WORRELL & COMPANY, Meats**  
21 Commonwealth Avenue Phone 5115

---

**SEVIER'S LAUNDRY**

*"31 years of laundry leadership"*

---

ROGER BACHMAN (lying on sidewalk): "I'll climb this wall if it takes all night."

---

*Twenty Million Buyers Can't Be Wrong*



**STATES MOTOR CO., Inc.**

FOR

*Good Photographs*

GO TO

**BOY'S STUDIO**

*403 State Street, Bristol, Virginia*

---

JUNE ALLEN: "Stop that man, officer; he wanted to kiss me!"  
COP: "That's all right, miss; there will be another along in a minute."

---

*Compliments of*  
BRISTOL BUILDERS SUPPLY CO.  
BRISTOL DOOR AND LUMBER CO.  
DOMINION LUMBER AND SUPPLY  
Co.

*"It Costs Less at Sterchi's"*

**STERCHI BROS.  
STORES, Inc.**



*Quality Furniture*

# Virginia Intermont College

*Member of the Association of Colleges and  
Secondary Schools of the Southern States*

An endowed Junior College and High School for young women, founded in 1884. Large, beautiful bluegrass campus high among the mountains surrounding Bristol. Home-like atmosphere, with finest traditions of the old South. Outdoor sports, gymnasium, pool, beautiful buildings, private baths. Modern gymnasium was built during summer of 1931.

Courses leading to graduation from the regular two-year junior college classical course: Teacher Training, Home Economics, Physical Education, Speech and Dramatic Art, Secretarial or Business, Public School Music, Piano, Organ, Voice, Violin and Art.

Due to endowment Intermont has a limited number of scholarships to offer Bristol girls. Over 150 students from Bristol and vicinity the past session.

For full information apply to

H. G. NOFFSINGER, *President.*

---

## D. B. Ryland & Company

*✻ Jewelers ✻*

GIFT SHOP: SECOND FLOOR

---

### HOTEL BRISTOL BARBER SHOP

*For Artistic Hair Cuts,  
Skin or Scalp Treatments*

WALTER FRANKLIN

### SINGER SEWING MACINE CO.

*Sewing Machines, Vacuum Cleaners  
Hemstitching*

712 State Street

BRISTOL, TENN.

Phone 626

# KING COLLEGE

King College, Bristol, Tennessee, is a four-year co-educational, Christian institution under the Synod of Appalachia.

Its faculty is composed of men and women with broad, thorough preparation and successful teaching experience.

Its student body consists of young women and young men from many of the most cultured and respected families in this and various other sections.

Its program of improvements has put the College plant and equipment on a par with colleges in this section.

Its regulations and discipline will be conducive to Christian character and thorough scholarship.

Its extra-curricular activities are supervised and directed by experts, and prove helpful and enjoyable to each student.

King College is a safe, sane place to send young men and women for a thorough Christian education.

For further information or catalog, address CHARLES W. HENRY, *President*.

---

THIS SPACE DONATED BY

BOSTON SHOE STORE

EAST END GROCERY CO.

FURROW ELECTRIC CO.

S. H. KRESS CO.

DR. H. E. LOVING, *Dentist*

COWAN BROTHERS,

*Hav-a-Tampa*

---

**H. M. Cawood**

GROCERIES AND  
FRESH MEATS

1208 Anderson Street

Phone 5107

---

COMPLIMENTS OF

TENNESSEE HI ALUMNI CLUB

## Sullins College

is fully accredited and offers unusual opportunities to every Bristol girl.

## Arlington Hall

offers to Bristol girls at "Special Bristol Rate" the advantages of accredited courses combined with all cultural features of Washington City.

Both schools offer superior advantages in Music, Art, Expression, Dramatics, Home Economics, and Secretarial Courses. Confer with us at Sullins College for information in reference to either school.

W. E. MARTIN, *President*

---

GOLIATH: "Why don't you stand up like a man and fight me?"

DAVID: "Wait till I get a little bowlder."

---

## Lynn-Kaylor Co., Inc.

*Bristol's Greatest  
Grocery Store*

Corner Sixth and Shelby

*"A Grocery Store That's Different"*

---

### *Think It Over!*

Your best investment next to Education  
is your Personal Appearance.

We can help you with the latter.

High School and Prep Suits Galore.

**Smith-Blakley Co.**



526 STATE ST. BRISTOL, Tenn. Va.

# ANNUAL

## *Experts*

---

THE art of book making as developed in the 20th century requires the highest degree of skill. It demands artistic handling of type faces, many of which have a classic beauty in themselves. High grade presswork, which necessitates hours of tedious make-ready to bring out the contrast of light and shadow found in every engraving. And last, but not least, the bookbinding—the art preservative that cares for your book for years to come. Yes, we do all these things, and many more and our journeymen take pride in producing books, especially College Annuals, of which all of us are proud.

---

The King Printing Company

*Printers, Engravers, Bookbinders*

Bristol, Tennessee

*Autographs*

*Autographs*



