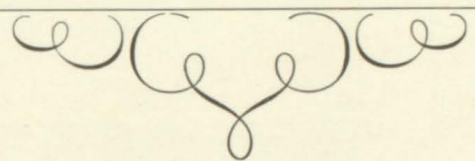


The
CADMEA
[1931]



Published by
THE CADMUS CLUB
MR. R. L. LADD, Sponsor
BRISTOL, TENNESSEE
HIGH SCHOOL

The Vikings Embark

Ready the ship, and grave the crew;
Hope tints the future a brighter hue.
Bold we be with tradition and pride,
Cheerfully hopeful o'er what may betide.
Come, great adventure, we're ready to share
The glory of conquest, or shades of despair.

The rising sun tints the murmuring sea.
The gray mists rise to enshroud;
We sail our ship thru the morning gate
Eager to be on our way.

D e d i c a t i o n

*WE, the Senior Class of 1931,
do hereby dedicate our
CADMEA to that intangible but
ever-present Viking Spirit, with-
out which no class can attain the
heights of success, the depths of
fraternal love, a feeling of loyalty,
and an abiding love for our
Alma Mater*



RALPH B. RUBINS, B. A., M. A.
Ohio Wesleyan University
University of Chicago
*Superintendent of Public Instruction
Bristol, Tennessee*

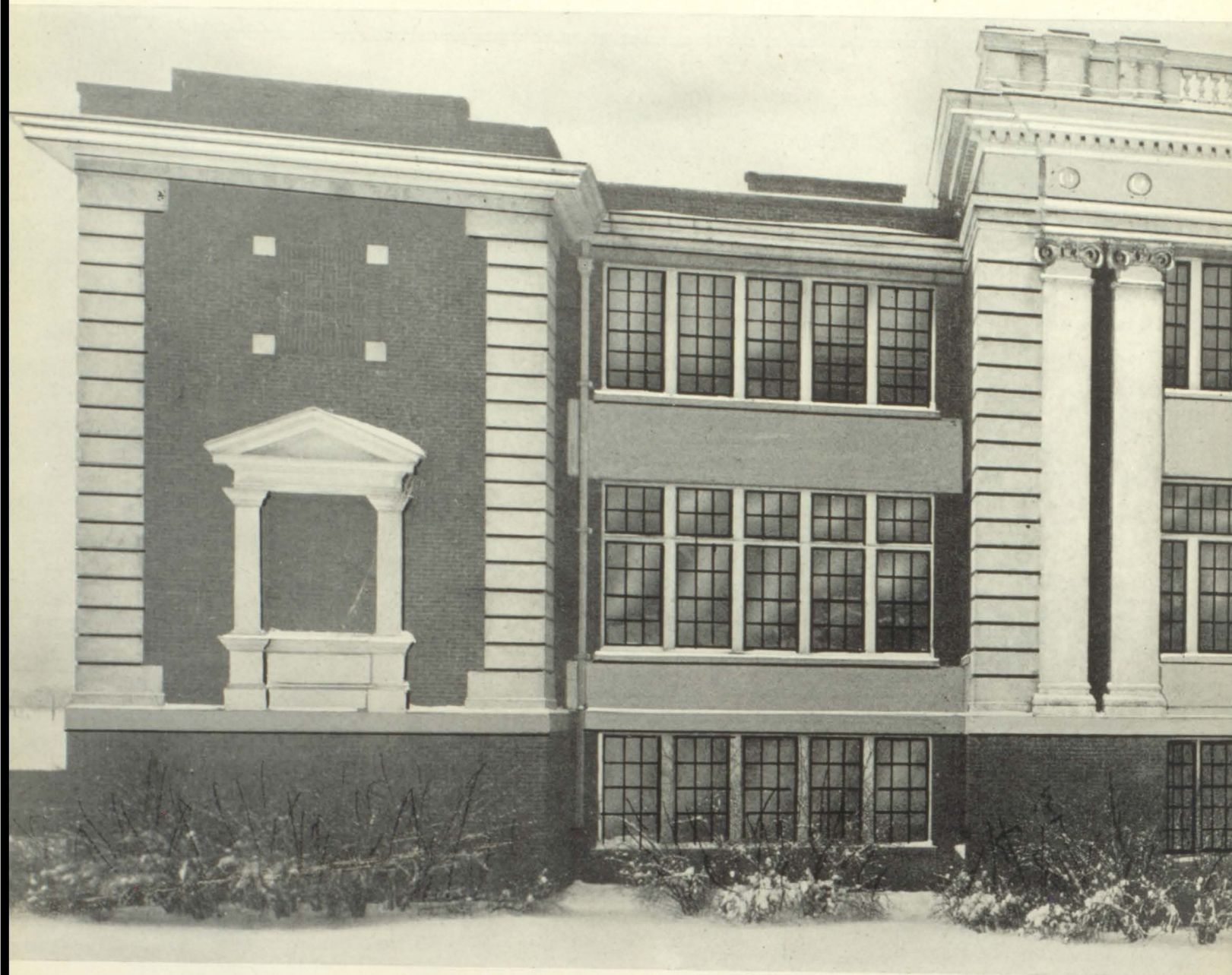
THOMAS H. TYLER, B. S.
Princeton University
Principal





Faculty

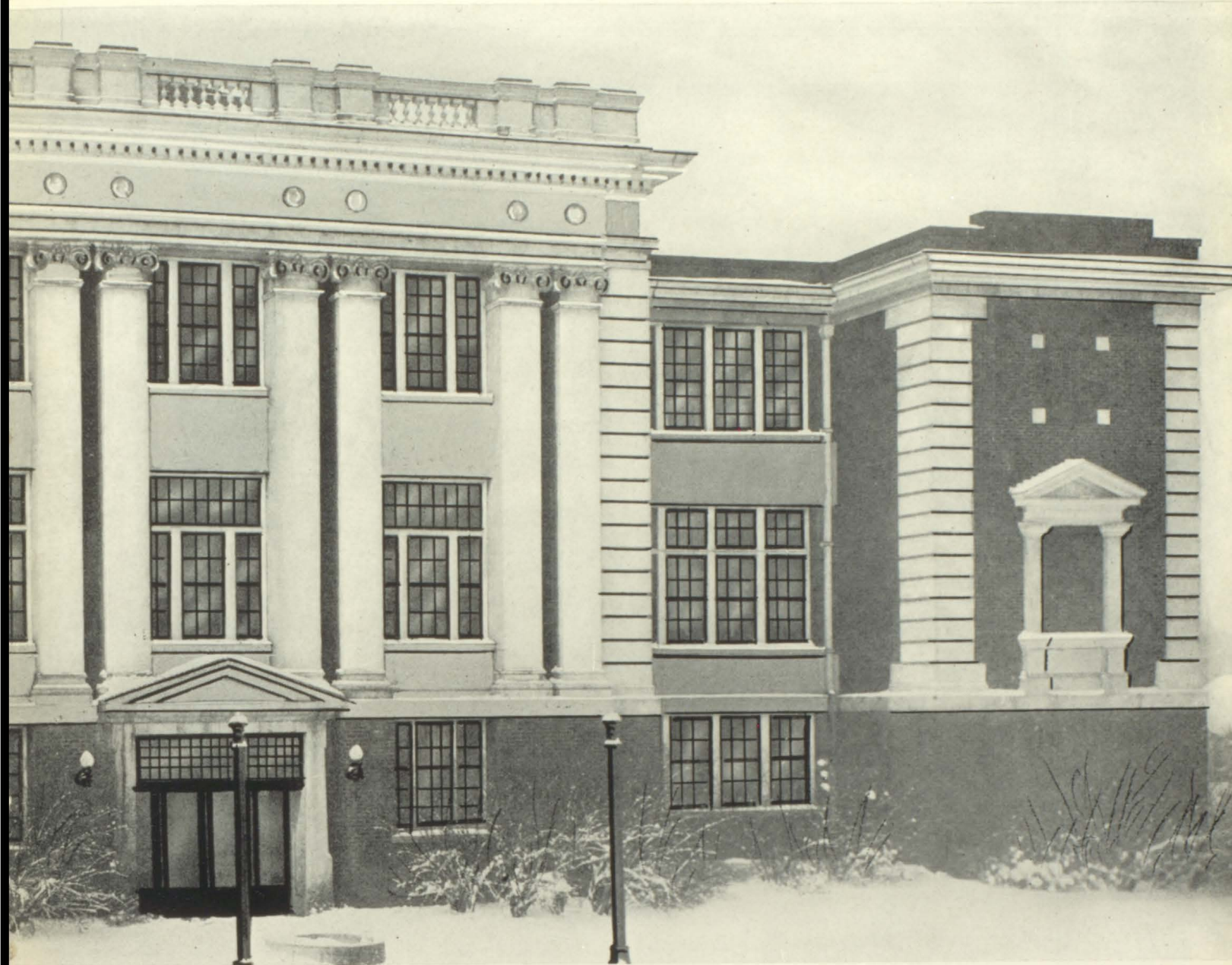
MR. JOHN H. BARNHILL— <i>Physical Education</i>	MISS CULLEY JAMES <i>History</i>
MISS MARY BEASLEY . . . <i>Physical Education</i>	MR. ROBERT LADD <i>Latin</i>
MRS. AILSIE P. BERGHAUSER <i>English</i>	MISS ANNA BELLE LYNN <i>Mathematics</i>
MISS BESS BROCE <i>English</i>	MRS. MARY R. MARNEY— <i>Latin, Algebra, English</i>
MISS HALLIE CARSON <i>Librarian</i>	MISS RUTH MASENGILL . . <i>English, History</i>
MR. R. CATALDO <i>Band Director</i>	MISS WILLIE MAE MOORE . . . <i>Commercial</i>
MISS ANNIE NEELD DRYDEN— <i>French, Algebra</i>	MISS REVELEY OWEN <i>Mathematics</i>
MR. ISAAC D. EGGERS— <i>Manual Training, Algebra</i>	MR. EVERETT L. ROWE <i>Science</i>
MISS CELIA FEINSTEIN <i>Commercial</i>	MR. W. S. RUTLEDGE <i>English</i>
MISS ZONA HAGGARD . . . <i>Home Economics</i>	MISS DELLE SMITH <i>History</i>
MISS ELIZABETH HICKS . . . <i>History, English</i>	MR. TARTAR <i>Science</i>
MISS VIOLA HODGES <i>Home Economics</i>	MR. GEORGE C. WILLIAMS <i>Science</i>
	MISS MARIE WINGFIELD . . . <i>English, Latin</i>



To Dear Old

*Built into your heart, as surely as stone,
As firmly entrenched as your own sturdy beams,
Are honor, and love, and respect—service won—
And a place in your children's fond dreams,
A dignity rests in your honest design,
A strength marks your great, rugged walls
And friendships, and lives of the children of men
Have endeared you, have hallowed your halls.*





Tennessee High

*Your field has been blest with your athletes' best,
Your banner, unsmirched, have they borne,
Your honor they carried untainted, and clean,
And proudly your seal have we worn.
Your doors have been marked by the thousands of feet,
And proudly may you wear these scars,
And it has been your own hand that has given the key
Which the door of the future unbars.*








—HASKELL OWEN, '29



CADMEA

		
DORIS HARBROID EDITOR-IN-CHIEF	LUCILE WYMAN BUSINESS MANAGER	MARY ANNA STONE SECRETARY
		
KATHARINE KESHLING ASSISTANT EDITOR	ANNIE TAYLOR ASST. BUSINESS MGR.	JUDITH ALLEN SNAPSHOT EDITOR
		
MARY FRANCES BARBE ART EDITOR	JOHN HENINGER JOKE EDITOR	

1931

		
JAMES RILEY PHOTOGRAPH EDITOR	MACK THOMAS PHOTOGRAPH EDITOR	ELIZABETH PURVINE ATHLETIC EDITOR
		
ROBERT COLEMAN ATHLETIC EDITOR	LOUISE ANDREWS LITERARY EDITOR	DAVID GRAY LITERARY EDITOR
		
NANCY MIDERMAIER LITERARY EDITOR	GENEVIEVE WALKER LITERARY EDITOR	



SENIORS

Senior Class Officers

Fall Term

TOM TORBETT, *President*
JOHN HENINGER, *Vice-President*
EDITH DAVIS, *Secretary*
GEORGE DOVE, *Treasurer*
MISS HAGGARD.....

Spring Term

JOHN HENINGER, *President*
JUDITH ALLEN, *Vice-President*
ANNE TAYLOR, *Secretary*
MACK THOMAS, *Treasurer*
.....*Sponsor*



Ave Atque Vale

Since we've come to the end and have won our goal,
Happy and gay we should be;
Joyful, yet sad at Commencement time,
For we're leaving our friends, you see.

Our dear Alma Mater, our well-beloved school,
You've been so tender a friend,
Your love and dear memory e'er with us shall stay,
And help us prove true to the end.

A host of fine friends here we have made
In years that seem only a day;
The years grow dim like a mystical dream
In which mingle the sad and the gay.

To all of our friends and our long-cherished school
We must now speak a sad, fond adieu.
As we go out to conquer the whole, wide world
We'll be wearing your armor so true.

—BEULAH SWINEY.

JUDITH LEE ALLEN
Classical

President All-Students Club, '30.
Vice-President All-Students' Club, '31.
Secretary All-Students' Club, '29.
President Junior Class, '29.
President Sophomore Class, '29.
Girls' Hi-Y, '29, '30, '31.
Treasurer Hi-Y, '31.
Maroon and White, '30.
French Club.
Pi Sigma Gamma, '29.
Cadmus Club.
Tennis Club, '31, '31.

*"She is the gayest of the bunch!
With her, happiness dwells,
She's to be great, I have a hunch;
Her praises everyone tells."*

Clever, witty and studious, "Judy" makes friends wherever she goes. We predict that life will never be dull or monotonous for "Judy," nor to those who are associated with her.

LOUISE ANDREWS
Classical

Cadmus Club.
Athletic Council, '30, '31.
French Club, '29, '30, '31.
Literary Society.
Girls' Hi-Y, '29, '30, '31.
Treasurer Freshman Class.
Tennis Club, '31.

*"Talk about friendly, lovable, vivacious and gay!
We will show you in Louise all these traits today."*

Louise is a good worker, a good student and a good friend. Her clever repartee has given us many a laugh, and her willingness to help at any time has proved to be of value to everyone. Talented as she is, success in this world is assured for her.

MARY FRANCES BARBE
Classical

Public Speaking.
Cadmus Club.
Chi Delta Phi.

"Quietly she worked away, faithful to each duty."

Although Mary Frances has just been with us this year, we have found in that short time that the keynote to her personality, is sweetness. She stands ready to do anything in her power for anyone—a most comforting person to have around.





ALBERTA BAUMGARDNER
Home Economics

Pi Sigma Gamma, '29, '30.
Chi Delta Phi, '31.
Commercial Club, '30.
Personal Editor *Maroon and White*, '30.
Maroon and White, '31.

*"Self-possessed and quite worth while,
With care-free manners and upright smile."*

Alberta is one of our most dignified Seniors. She is active in the activities of the school. Although, because of illness, Alberta was not with us during all of our Senior year, we feel sure that she is a Senior whom the class is glad to claim.

MARY BERENS
Classical

French Club.
Commercial Club.

*"Mary is a girl worth while, her friendship is a
treasure,
We wish her lots of luck in life, and success in good
measure."*

Quiet and dignified is Mary. We are proud that she is a member of the Class of '31. We know that she will be successful wherever she goes and in whatever she chooses to do in the future.

PAUL ALLEN BOY
Manual Arts

"A quiet, unassuming chap of sterling worth."

Paul possesses to a high degree the admirable quality of attending strictly to his own business. Although reserved, he is cheerful and diligent and loyal to his school and friends.

MARY ISABELLA BOY
Classical

French Club.

"Ever thoughtful, ever kind."

To Isabella, we can apply the full meaning of the word "student." The faculty will testify to the fact that the rest of the class finds it useless to compete with Isabella in making the highest grades.

VIRGINIA CARR
General

Literary Society.

Maroon and White, '30, '31.

Commercial Club, '30, '31.

Athletic Council, '28, '29.

*"Where she is—there is lots of fun,
Troubles from her will always run."*

Virginia always takes things easily. She is care-free and happy, and has made many friends. Her pleasant smile and air of good-will always give her a welcome.

ELIZABETH CHILDRESS
Commercial

Commercial Club, '30, '31.

Girls' Hi-Y, '30, '31.

All-Students' Club Council, '31.

President Commercial Club, '31.

*"A staunch friend, good and true,
That is Elizabeth—she is true blue."*

Elizabeth, with her sunny disposition and dependable way, has found a place in the hearts of all who know her and we shall all miss her. May the best of success be hers.





VIRGIL CLAMAN
Commercial

"Speech is great, but silence is better."

Perhaps this quotation would not fit anyone so well as Virgil. Because of his quiet nature, he is not often in the lime-light. But we believe it is this quietness which makes him so well liked.

ERNEST BETTS COFER
Classical

Editor-in-Chief of *Maroon and White*, '30, '31.
Maroon and White, '27, '28, '29, '30, '31.
Varsity Debate, '29, '30, '31.
All-Students' Club Council, '28, '29, '30, '31.
President Sigma Tau Sigma, '29.
President Sophomore Class, '29.
Vice-President Freshman Class, '28.
Boys' Hi-Y.
Class Testator, '31.

"Don't judge a book by its cover,
For in this little body lodges a mighty mind."

Betts is just the fellow to be the editor of the *Maroon and White*. His slogan is "Something attempted, something done." This determination means success!

ROBERT W. COLEMAN
General

Vice-President Sigma Tau Sigma, '29.
Secretary and Treasurer Boys' Hi-Y, '30, '31.
Maroon and White, '29, '30.
Cadmus Club.
Tennis Club, '28, '29, '30.
"T" Club.
Track, '28, '29, '30, '31.

"Sometimes always here and always there,
For he is welcome everywhere."

"Bob" is a happy-go-lucky sort of a fellow who is liked by all. Rain or shine, "Bob" is the same. We are looking to him to make a name for himself in his future activities.

EDITH DAVIS
Classical

Secretary Senior Class, '30.
Secretary Chi Delta Phi, '30.
Secretary of French Club, '31.
News Editor *Maroon and White*, '31.
Literary Editor *Maroon and White*, '30.
French Club, '30, '31.
Pi Sigma Gamma, '30.
Girls' Hi-Y, '30, '31.

*"She doeth little kindnesses,
Which most leave undone."*

A student of ability, an admirable personality, and a fair and enduring nature—that's Edith. Her ceaseless and enduring energy and strength have become by-words in the school. Carry that energy with you, Edith, everywhere you go in life, and we know great success will be yours.

DOROTHY DENTON
General

Commercial Club.

"Once a friend, always a friend."

One only has to know "Dot" to like her, but she must be known to be appreciated. Her classmates will testify to her fairness and determination, which are her chief virtues.

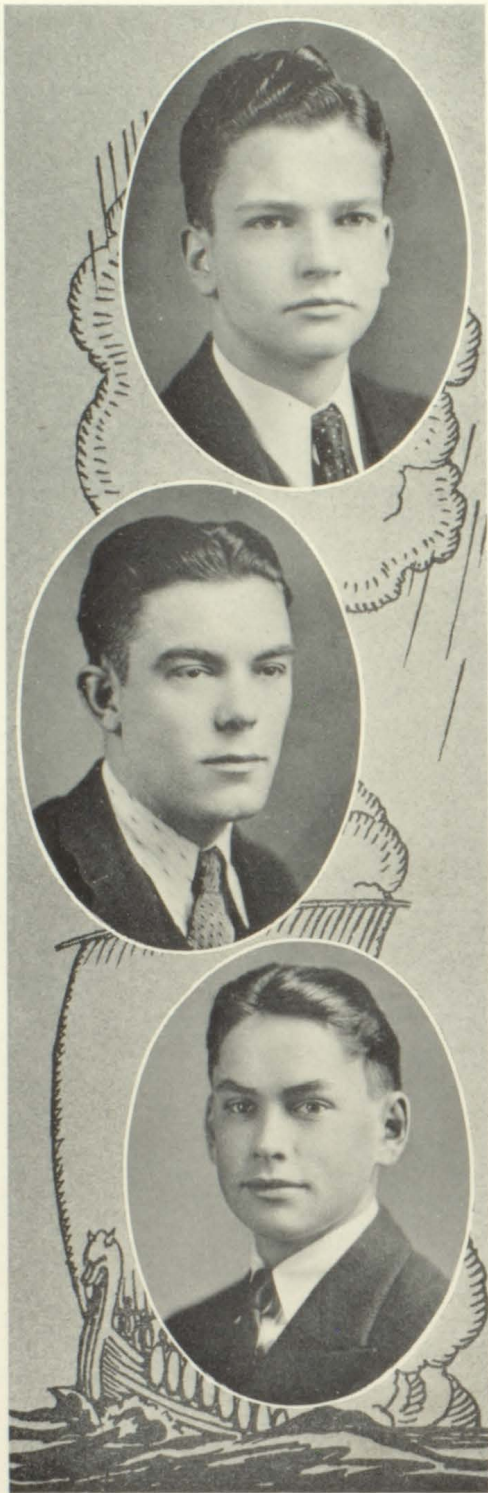
MARY DEVAULT
Classical

Commercial Club, '30, '31.
French Club.
Girls' Hi-Y, '30, '31.

"A safe companion and a good friend."

Mary, or "Bobbie," has won the admiration of many by her sweet disposition. Her wondrous past foretells a still more wondrous future. Mary is in *on* everything and in *for* everything. Tennessee High will miss her loyal support.





GEORGE NAFF DOVE
Classical

Treasurer, Freshman Class.
Sigma Tau Sigma, '28, '29, '30.
Maroon and White, '29, '30, '31.
Varsity Declaimer, '30.
Varsity Debater, '30, '31.
Treasurer of Senior Class, '30.

"It is a condition which confronts us—not a theory."

In George the dignity of our class is personified. George is one of those rare combinations—personality and brilliance. We hope his success in life can be judged by his Cicero grades.

PAUL GLOVER
Commercial

Commercial Club.

"Judge me as you will, I am what I am."

We predict for Paul a great success in the music world. As he is of a retiring nature, we are sorry we have not been able to know his real worth. But this we have learned, that he is willing to help his classmates in any possible way that he can.

DAVID GRAY
General

Sigma Tau Sigma.

"I am always in haste, but never in a hurry."

David is witty, and can always see the bright side of life. We hope that the Senior Class of next year will have a boy to take his place.

MYRTLE ANN GREER
Commercial

Commercial Club.

*"A rare compound of oddity, frolic and fun,
Who relished a joke and rejoiced in a pun."*

"Little, but loud." Myrtle, a fun-loving girl, brings a ray of sunshine to our dark halls. We hope that she may find as much happiness in future life as she has given us at Tennessee High.

DORIS HAROLD
Classical

Editor-in-Chief of Cadmus Club.
Girls' Hi-Y, '29, '30, '31.
Secretary of Girls' Hi-Y, '30.
French Club.
Vice-President of French Club, '30, '31.
Secretary of Sigma Tau Sigma, '29.
Maroon and White, '29, '30.
Literary Society.
Latin Medal.

*"Doris will do brave deeds; Doris will do right,
Doris will always get the most out of life."*

Friendly words, plus a good sport equals friends. During the four years Doris has won a warm place in the hearts of her friends. We feel sure that there will be success in whatever she undertakes in the future.

FRANCES HELTON
Vocational

Commercial Club, '30, '31.
Literary Society, '28, '29, '30, '31.
French Club.
Girls' Hi-Y, '31.

*"Modest, quiet, dignified, a good old pal and true,
All those who know you, love you, dear—best luck
in all you do."*

Frances has a most beautiful depth of character, and a kind and sincere friendship for all. Although rather reserved, and dignified, she possesses a strong determination and a splendid personality. Here's hoping that Madame Fortune holds a great measure of happiness for you.





JOHN LILBURN HENINGER
Polytechnic

President of Senior Class, '31.
Vice-President of Senior Class, '30.
Vice-President of Junior Class, '30.
Treasurer of Junior Class, '29.
Advertising Manager of *Maroon and White*, '29, '30.
Cadmus Club.
President of Sigma Tau Sigma, '30.
Vice-President of Chi Delta Phi, '31.
President of Boys' Hi-Y, '30.
Sergeant-at-Arms, Boys' Hi-Y, '31.
All-Students' Club Council, '30, '31.
Tennis Club, '28, '29, '30, '31.

"Act well thy part, therein all glory lies."

John is one of the most valuable members of our Senior Class. As president he has led us through a successful year. We feel sure that his success in school activities will follow him through life.

WILLETTA HUFF
General

Commercial Club, '30, '31.
Literary Society.

*"Her sparkling blue eyes,
Her gracious manner,
Her attractive personality,
Win her a way
Wherever she goes."*

With a merry smile and a cheery word for all, Willetta has ever been an addition to any High School group. A good fellow, a good friend—who could ask for more?

EDNA HUNIGAN
Polytechnic

Literary Society, '31.

*"Always sunny, never blue, although the sky be gray,
She's so witty that she makes us all feel gay."*

Edna has a cheery disposition in all circumstances. This disposition has made for her many friends. She is always willing to lend a helping hand, and we know this will win for her success.

KATHERYN KEESLING
Classical

Secretary of All-Students' Club, '30.
Secretary and Treasurer of "T" Club, '30.
Vice-President of "T" Club, '31.
Captain Girls' Basket-ball, '31.
Basket-ball, '29, '30, '31.
Chi Delta Phi.
Girls' Hi-Y, '30, '31.
Cadmus Club.
French Club.
Tennis Club, '31.

*"A good sport, in life, all in all,
As well as in basket-ball."*

For "Kat" we see a future, brilliant in every respect. Her spirit of cooperation and her willingness to help, at any time, are admired by everyone.

LILLIAN LATTURE
Commercial

French Club.
President Commercial Club, '30.
Secretary Commercial Club, '31.
Commercial Club, '30, '31.

*"Brown eyes—charming and gay,
And with her voice, she steals our hearts away."*

Lillian is the Senior beauty. As if this was not enough charm for one person, Mother Nature also endowed her with the characteristics that have gained for her many friends. She is the owner of a good disposition and a generous smile.

VIRGINIA LOVE
Commercial

Head Cheerleader, '30, '31.
"T" Club.
Varsity Basket-ball, '28, '29, '30, '31.
French Club.
Sigma Tau Sigma.
Commercial Club.
Maroon and White Staff, '29, '30, '31.
Manager Public Speaking Club, '30, '31.
Chi Delta Phi.
Tennis Club.

"Love is a wonderful thing."

Here's to "Love." An all-round girl, excelling in her studies as well as in sports. With her ability to make goals in basket-ball, one could only expect her to continue making them throughout life.





NELL LOWE
Home Economics

*"Of soul sincere,
In action faithful and in honor clear."*

There is nothing too difficult for Nell to undertake when it comes to problems. Perhaps the most outstanding thing that we know about Nell, is her high ideals and her ability to meet them. Following these we are sure she will meet with success.

ALMA LEE MARTIN
Classical

All-Students' Club Council, '31.
President French Club, '31.
French Club, '30, '31.
Pi Sigma Gamma, '29, '30.
Chi Delta Phi, '30, '31.
Program Secretary Chi Delta Phi, '31.
Girls' Hi-Y, '31.

*"As welcome as sunshine in every place,
So the beaming approach of a good-natured face."*

Alma Lee possesses the most valuable quality—a cheerful and generous disposition. She is one about whom it may be truthfully said, "None knew her but to love her." She is not only cheerful but she is also intellectual. There is nothing too difficult for her in the way of text-books. She has made a place for herself at Tennessee High.

HAZEL IRENE McCLELLAND
Commercial

Commercial Club.
Chi Delta Phi.

"Just a little bit of sunshine."

We love her quietness, and we will miss her when she leaves us. With the determination which Hazel has, she is bound to make good in whatever she undertakes.

ARBUTUS McCROSKEY
Classical

French Club, '29, '30, '31.

*"So happy, so kind, and so still,
With her quiet ways, and her gentle will."*

Friendly, loyal true—that's Arbutus. She is a friend to everyone. We know that she will be successful in whatever she undertakes in the future and we wish for her much happiness.

NANCY NIDERMAIER
Commercial

Cadmus Club.
Chi Delta Phi, '30, '31.
Commercial Club, '30, '31.
Literary Society.
Girls' Hi-Y, '30, '31.
Treasurer Commercial Club.

*"Jolly, charming, full of pep,
Always willing to lend her help."*

Nancy is dependable, practical, and pleasantly good-natured. Common sense, sweetness, and sincerity are among her outstanding characteristics. Nancy, you are the right sort, and we are all on your side.

NANCY JANE PEOPLES
Classical

French Club.

*"She needs no eulogy;
She speaks for herself."*

Nancy is another cherub of our class, and a student as well. We have often wished we could meet our many problems in the care-free way that Nancy does. With such a disposition, we know she will make many friends and few enemies.





MARY RUTH PHIPPS
Classical

Secretary and Treasurer French Club, '30.
Girls' Hi-Y, '30, '31.
Maroon and White, '30, '31.
Local Editor Maroon and White, '30.
French Club, '29, '30, '31.

*"A friend, a pal, a comrade rare;
A girl who's always fair and square."*

Mary Ruth is studious and is in every way a "good all-round girl." Because she is unassuming, she early gave the impression of being kind and true-blue to both friends and acquaintances. During her four years at Tennessee High she has proved many times the truth that an early impression is lasting.

HENRY LEE PROFITT
General

Commercial Club.

*"Let be my name until I make my name,
My deeds shall speak."*

With Henry "silence is golden." According to this quotation we would expect him to be rich. He seldom speaks, but when he does, we know he has something worth while to say. He is a good student and deserves the recognition which he has won.

ELIZABETH PURVINE
Classical

Cadmus Club.
Girls' Hi-Y, '29, '30, '31.
All-Students' Club, '30, '31.
Basket-ball, '30, '31.
"T" Club.
President of French Club, '30.
President Girls' Hi-Y, '31.
Vice-President of Girls' Hi-Y, '30.
Literary Society, '29, '30.

*"Here is a sport—staunch and true,
The right thing, we can always trust 'Mose' to do."*

Here's a great girl! Full of laughter and fun! The beauty of it is she knows when to be serious, and may always be depended upon to do the task she undertakes.

THELMA RAWN
Classical

Secretary Commercial Club, '30, '31.
Girls' Hi-Y, '30, '31.
Commercial Club, '30, '31.
French Club, '29, '30, '31.
Pi Sigma Gamma, '28, '29.

*"Full of fun, full of pep,
Light of heart, light of step,
Very pretty, very small,
This is Thelma, loved by all."*

Thelma is one of our sweetest and most attractive Seniors. She has won a place in the heart of every student, and we are proud to claim her as a member of the Class of '31.

NELIA RICHARDSON
Commercial

"The way to gain a friend is to be one."

Whenever you ask Nelia to do something for you, you may depend upon its being done. She will do her best in any task. Her faithfulness deserves the success that will surely come her way.

JAMES ANDREW RILEY
Classical

Cadmus Club.

"Quiet, sincere, and liked by all."

James possesses the admirable and valuable qualities of dependability, determination and earnestness of purpose. These should carry him forward toward success in any work he may take up in future years.





JAMES SMALLING
Classical

Maroon and White, '29, '30.
 Public Speaking Class.
 Sigma Tau Sigma.
 Varsity Debate, '31.

*"Born for success he seemed,
 With grace to win, with heart to hold."*

We are proud to claim James as one of our classmates. His good nature is not the least reason why he is so well liked. We wish you the greatest success life has to offer, James.

ALMA SMITH
Commercial

French Club.
 Maroon and White, '29, '30.

*"She never neglects duty for pleasure, she's cheerful
 all the while,
 A girl with lots of ability and a sweet and pleasant
 smile."*

Alma has many friends in Tennessee High who wish the very best for her. She is one of the quiet, unassuming members of the class, on whom we can depend for anything we want done.

LUCILLE ELIZABETH SPARGER
General

Commercial Club.
 Chi Delta Phi.

*"I am happy, from care I am free;
 Why can't all girls be like me?"*

"Jim" is quiet and reserved to those who do not know her well, but to the "chosen few" she is jolly and ready for a good time. Why can't all of us be with the "chosen few?"

LYDIA SPENCE
General

"A friend to one and all alike."

Everybody likes Lydia because of her cheerful sincerity. Surely those qualities will lead her on to great things in this old world. She holds a lovable place in the hearts of her classmates as well as her close friends.

MARY ANNA STONE
Classical

Sigma Tau Sigma, '29, '30.
Girls' Hi-Y, '29, '30, '31.
President Girls' Hi-Y, '30.
Maroon and White, '27, '28, '29, '30.
Alumni Editor Maroon and White, '29, '30.
Cadmus Club.
All-Students' Club, '30.

"Here's to jolly ole' 'Stoney,'
A loving, capable, willing pal!"

"Stoney" has a magnetic personality and uses it to an advantage, making her unusual and attractive. She is gifted in many ways, and we know she will some day be a great pianist.

MARY BEULAH SWINEY
Commercial

Class Poet.
Commercial Club.

"A maiden never bold."

Always smiling, always good-natured—that is Beulah. We who have known her will miss her more than words can tell. May her life after she leaves us be as full of success and friendship as it has been here in school.





ANNE TAYLOR
Classical

Treasurer Sophomore Class.
 Orchestra, '28, '29.
 Sigma Tau Sigma.
 Secretary of Sigma Tau Sigma, '30.
 French Club, '30, '31.
 Vice-President French Club, '31.
 Girls' Hi-Y, '29, '30, '31.
 Treasurer Girls' Hi-Y, '30.
 All-Students' Club Council.
 Secretary All-Students' Club, '31.
 Secretary Senior Class, '31.
 Cadmus Club.

*"She is pretty to walk with,
 And witty to talk with,
 And pleasant, too, to think on."*

Anne is one of the most delightful comrades one could ask for. With her constant smiles and cheery words for everyone, she holds a place in the hearts of her classmates that no other can fill.

MABLE ONA THOMAS
Commercial

Commercial Club.

*"In the fall a young girl's fancy lightly turns to
 basket-ball."*

Being richly endowed with common sense, we feel confident that whatever work she pursues she will gain unlimited success. She takes unusual interest in all kinds of sports, especially basket-ball.

MACK THOMAS
Classical

Cadmus Club.
 Literary Society.
 Tennis Club.
 Treasurer of Senior Class, '31.
 Boys' Hi-Y.

*"'Tis well to be merry and wise,
 'Tis well to be honest and true."*

Mack bears a thoughtful and dignified mien. Polite and courteous, at all times, he is a perfect gentleman. We feel sure he will reflect credit on anything with which he is connected.

ZULA RHEA THOMAS
Polytechnic

Pi Sigma Gamma, '29, '30.
Chi Delta Phi, '31.

*"Beautiful faces are those that wear
The light of a pleasant spirit there."*

Zula Rhea's winning and ever-ready smile is one of the first things that draws admirers to her. When we learn to know her better we find many admirable qualities, half hidden in her modest nature. We are glad that you are a member of the Class of '31, Zula Rhea.

LUCILLE UMBERGER
Commercial

Joke Editor of *Maroon and White*.
Literary Society.

*"She just makes everyone love her—
By her loving ways and sweet personality."*

Lucille is "true blue." Ask her friends; they know it to be a fact. She is loyal to them, to school, and to whatever task she performs.

MARGIE LYNN VANCE
Classical

Literary Society, '28, '29, '30, '31.
French Club, '29, '30, '31.
All-Students' Club, '30.
President Literary Society, '30.
Vice-President Literary Society, '31.
Girls' Hi-Y, '30, '31.

*"A merry heart, both good and kind,
And a truer friend 'tis hard to find."*

During the four years that Margie has been with us she has won the admiration of both faculty and students through her frankness, honesty, and fine ideals. It can be truly said of her that she has the good wishes of all with whom she comes in contact, and we feel sure that in the years to come she will have troops of friends and contentment.





CHARLES THOMAS WADE
Classical

All-Students' Club Council, '29, '30, '31.
Treasurer All-Students' Club, '31.
Vice-President All-Students' Club, '30.
President Junior Class, '30.
Vice-President Junior Class, '29.
Sigma Tau Sigma, '28, '29.
Maroon and White, '29, '30.
Football, '28.
Freshman Scholarship Medal, '28.

"Friendship is the highest degree of perfection in society."

Tom is liked by every one. He is open and frank in everything he does and says. We know that with all of his fine traits he will some day be a man that Tennessee High will be proud of.

GENEVIEVE WALKER
Classical

Cadmus Club.
Girls' Hi-Y, '30, '31.
Secretary Girls' Hi-Y, '31.
French Club.

"She hath a manner that is gentle and refined."

Genevieve has won friends everywhere, with her bright smile and sweet disposition. Her lovely spirit of cooperation and good-will is admired by everyone.

MARIAH ELIZABETH WHITE
Commercial

Commercial Club.

"Deeds, not words."

A quiet dignity, and a great deal of perseverance are Elizabeth's most striking characteristics. We might add that she is no slacker when it comes to work, for this is true of her.

HAZEL WILLIAMSON
Classical

French Club, '29, '30, '31.

*"With a winsome personality and a lovable disposition—
What more can one ask?"*

Quiet and sincere is Hazel, making friends everywhere she goes. The class feels sure that she will be successful in the world, for she is an earnest worker always ready to help.

LUCILE WYMAN
Classical

All-Students' Club, '30, '31.
Cadmus Club, '30, '31.
Girls' Hi-Y, '30, '31.
French Club.
Basket-ball, '30, '31.
Manager Basket-ball, '31.
"T" Club, '31.

*"A sweet, quiet girl in the hall;
You'd never guess her pep,
Unless you saw her in the gym
Playing basket-ball!"*

In Lucile we have a good, all-round girl. She is an excellent student and shows great ability in the field of athletics.

TOM P. GANNAWAY
General

Football, '30.
Track, '31.
Boys', Hi-Y, '30, '31.
"T" Club, '30, '31.
Tennis Club, '31.
Debating Team.

"Hail fellow, well met."

Although Tom has been our classmate for only a year, his winning personality and friendliness have won for him the admiration and friendship of the entire class.



Class History

As we started on our voyage in the early fall of '26, deep within our hearts dwelt the feeling that we would never reach that far-away port, so distant, and yet, so worth while. Sometimes, I believe there was a little encouragement in the fact that even a great hero like our Anglo-Saxon ancestor, Beowulf, had such fears when he searched the caves and dungeons of the Northland for Grendel. Behind us lay the safe ports of Anderson and Fifth Streets; in front, the hazards of an unknown sea, the Tennessee High School.

The weather for beginning the great voyage was favorable until the upper classmen decided that the subs needed a slight drenching. So, unexpected storms arose from the boys' and girls' locker rooms where the showers were put into operation.

After eighteen weeks of work and pleasure (having enjoyed, in the middle of it, a grand Christmas holiday) exams were staring us in the face. There was fear and trembling in every class. Latin and Algebra were probably the rocks which were most likely to shipwreck us. Alas! we now had to kiss the bright, sunshiny days of fun good-bye and become really serious, if we wanted to weather this storm.

Probably the school activities which had the greatest attraction for beginners were football and basket-ball. Although these games were not absolutely foreign to grammar school pupils, nevertheless, it took the spirit of old Tennessee High (now known as the Viking Spirit) to awaken the great thrill in our hearts. Even at this childish age there was nothing that could persuade us to give up the voyage, so thrilling was the new experience of really taking part in things that came our way.

Seeing that our first port lay safely behind us, our intention was to reach Port Freshman before our supply of knowledge was thoroughly exhausted. By this time we had become accustomed to the hard weather which included the wise cracks we received from Juniors and Seniors, the every day pushing trying to grab our lunch, and also Mr. Ladd's little tea parties. This keen and vigorous air was certainly having its effect on us.

This year had a big surprise for us. Under the able sponsorship of Miss Hicks and Mr. Cardwell, the Freshman gave a "kid" party. Mr. Cardwell, by the way, was a little disappointed as this festivity had nothing to do with the League of Nations. At a "kid" party, of course, we all felt natural. The lunch room was crowded with boys in their ridiculous rompers and girls with cute little socks, short dresses, and hair ribbons.

Dignified was not at all a suitable adjective for us at this time. Commencement was a word unheard of; Seniors, a classical name, only for the scholarly. We were still in the cradle, but becoming more confident of ourselves each day.

The skies overhead were very blue as we let down the sails and anchored in the harbor of Port Sophomore. This year dragged along slowly. This was probably because we were no longer babies and yet not in the ranks of the renowned. Our interest in the school had increased immensely and the daily routine had become a habit with us. This brief period was helping to mature the minds of such prominent personages as Judy Allen and Johnny Hening.

There wasn't much to hinder us from a safe landing at Port Junior, unless it was hard

work. Having reached a place of prominence, we proceeded to carry out many projects during this year. To tell the truth, this year began with plenty of excitement, as nearly every girl in the school was raving about our new Chemistry teacher.

Since it was customary, we tried to put on a Junior Play. Mr. Tyler willingly agreed to coach the different parts. He certainly had a job on his hands, however, as everybody wanted to play instead of practice. "Poor Father" was the play finally selected and with much enthusiasm everyone in the cast tried to learn his part. In fact, some were a little too enthusiastic and put in parts that weren't even in the original. We hadn't read Hamlet's advice to the players then. After deserting studies every night in order to practice, the cast finally arrived at the "bitter end," that is, the night they should give the play. Every one enjoyed it. At any rate, we thought it was a success.

By means of the proceeds, which we received from the play, we bought the school a trophy case. In our opinion, this is a very worthy contribution and one of which we are justly proud. The school had never had any place to keep the cups and awards which it had earned, until the Viking Spirit of the Juniors aroused them to put their wishes into action. Thus, we leave behind us a token of our love for Tennessee High.

Still we sailed on with feelings of mingled joy and fear in our hearts as we neared the port which would hold out to us the torch we were to bear through our senior year. We had come to the realization that the Seniors must do everything.

Time had passed so swiftly, that we could hardly realize our good Viking ship had brought us safely to Port Senior, our destination, and the end of a long voyage was in sight. There were many things happening during this year. The school put on a Carnival which was the first that had been given over here in many years. All the students took a great deal of interest in it and gave it their hearty cooperation. Although a great many incidents I have mentioned pertain more to the school than to the Senior Class alone, nevertheless, I feel that anything the school has undertaken has always had our hearty support.

During this year the same things have confronted us that have always bothered Seniors. There were the Annual, the Senior Play, invitations, caps and gowns, and the Maroon and White Revue, to occupy our time, to say nothing of the final round of studying which included that strenuous term paper on *Hamlet*; there were, besides, numerous other tragedies. It has been a hard fight, but we have stood the test and have come out on top. To our sponsor, Miss Haggard, we owe much for helping us in all our undertakings. To Mrs. Berghauser and Mr. Ladd we are indebted for their cooperation in helping us to put out an Annual which we are proud of. Last, but not least, we wish to express our gratitude to Mr. Tyler and Mr. Rubins for the help they have given us in solving difficult problems. Seniors are not what they should be without the support of the teachers, so to the entire faculty we would like to express our genuine gratitude.

—MARY ANNA STONE, *Historian*.

Last Will and Testament

We, the Senior Class of Tennessee High School, City of Bristol, State of Tennessee, being of sound mind and body, but knowing the certainty of examinations and the uncertainty of their outcome, do hereby make and declare this to be our last will and testament, hereby revoking all promises and legacies heretofore made by us.

First: To the Juniors we leave our dignity of seniority; this with the admonition that they exercise with judgment their power of seniority over the lower classmen, as we have done.

Second: To the Sophomores and Freshmen we will our remarkable economy of effort in study, together with the admonition, never in any way to permit study to interfere with their education. We believe this to be very important.

Third: To the Sub-Freshmen we leave all our high ambitions, hoping that these may help them to scale, as we have scaled, the majestic peak of learning, and finally to become dignified Seniors.

Fourth: To Mr. Tyler, our highly esteemed principal, we leave the tranquility which we hope he will have after June, 1931, trusting that during the months of this summer he may recover from the effect of constantly hearing our woes and of taking under consideration many an illogical alibi.

Fifth: To Miss Haggard, our faithful and efficient sponsor, we leave our thanks and appreciation for guiding us through our Senior year to graduation.

Sixth: To Mrs. Berghauser, our friend and counsellor, we leave the assurance that we have profited tremendously by the fine philosophy of life that she taught us.

Seventh: To the Faculty in general we leave our sincerest appreciation for their untiring efforts to make something out of nothing.

Eighth: Lucile Wyman, Mary Anna Stone and Doris Harrold will their places as "shining stars" in all classes to Agnes King and Elizabeth Lowery. James Smalling leaves his interest in girls to Donald Baird and Kenneth Booher. Beulah Swiney wills her position as class poet to anybody in the Junior class who will have time enough to write and rewrite again a class poem. Louise Andrews, Anne Taylor, Frances Helton and Nancy Peoples leave their King College friends to Katherine Kesner and Louise McGoldrick, with the provision that if the legacy be greater than the beneficiaries can handle, they shall distribute the surplus supply among their girl friends, as they see fit. John Heninger wills the friendship and esteem of the entire faculty and student body to the next Senior president. Mary DeVault wills her vampish avility to Katherine Cooke. Judith Allen leaves her popularity, originality and wit to John Marcy. Tom Wade bequeaths his tendency to appear lazy when exercising great mental activity to Albert King. He leaves also his place as class sheik to Randolph Leslie. Alma Lee Martin betstows upon June Allen her winsome nature. Virginia Carr leaves to Katherine Woolsey the distinction of being the Senior Class "cutest girl." Tom Gannaway wills his football ability, together with interest in Kingsport at night, to Howard Phipps.

Paul Boy, Henry Proffitt, Paul Glover, Virgil Claman and James Riley will their unconquerable bashfulness to Mack Furlow, George Davis and Ben Green. George Dove wills his oratorical ability to Bob Anderson. Katherine Keesling bequeaths her place as best all-round girl to her sister Mary. Robert Coleman leaves his unusually large vocabulary of Shakespearian by-words to all students of Shakespeare next year. Mack Thomas and Billy Barker leave to Walter Nuckolls and John Hughlett the secret of their success in evading the traps set by Tennessee High's unscrupulous flappers. Dorothy Denton and Lucille Umberger leave their past love affairs and any old love letters, that may be found, to Nellie Poore and Mable Spitzer with the stipulation that the letters must not be posted on the bulletin board. Willetta Huff and Virginia Love bestow their captivating personalities upon the Juniors who shall be determined worthy of the legacy. Lillian Latture wills her place as the prettiest girl to the class' choice for that position next year. Isabella Boy, Genevieve Walker and Elizabeth White and Hazel McClellan will their favorite motto, "Silence is golden," to Bonita Eggers, Elizabeth Booher and Bonnie Weaver. Edith Davis leaves her quiet and unassuming charm of nature and manner to Nellie Turner and Julia Rhea. Mary Berens, Myrtle Greer, Elizabeth Childress and Thelma Rawn will their talkative natures to Leonard Brown. Arbutus McCroskey, Mary Frances Barbe, Nell Lowe and Alma Smith leave their quiet and dignified manner to Ola Goodman, Sarah Seneker and Florence Franklin. Hazel Williamson and Mabel Thomas bequeath their love for chewing gum to Sarah Jones, with the admonition to exercise it with care when in the Senior English Class. Mary Ruth Phipps leaves her ability to find pleasure in studying Physics to Augusta Lee Beidleman. Zula Rhea Thomas leaves her ability to type to Grace Quales. Edna Hunigan wills of Tennessee High, at large, her ability in Math. Margie Lynn Vance leaves her literary aptitude to Mary Clardy. Nelia Richardson and Lydia Spence leave their love for study to Elizabeth Booher. Lucile Sparger leaves to her sister Lois the duty of keeping the Sparger name on the Tennessee High roll for another year. Nancy Nidermaier wills her ability in salesmanship to Margaret Warren. David Gray leaves his Thursday night excursions to V. I. to Claude Heninger. Elizabeth Purvine wills her ability not to miss anything to Richard Reser and Warren Fleenor.

To all Juniors, not mentioned heretofore in this will, are bequeathed the things left by absent-minded Seniors in their rare moments of concentration.

Sworn and subscribed before me this first day of April in the year of our Lord, nineteen hundred and thirty-one.

E. BETTS COFFER, *Attorney-at-Law.*

Class Prophecy

Seating myself comfortably in front of my log fire, for, tho' it was the last of May, the nights high up in the Adirondacks are too cold to do without a fire, I prepared to read the letters and news from home. I glanced at several papers, then picked up an unfamiliar one of great bulk, "THE BRISTOL BUGLE." "Hum," I thought, "here is a new one!" I noted the date—May 30, 1942—then, being of a curious nature, I turned to the editorial page to see who the editor might be. In the upper left-hand corner the following notice astonished me: THE BRISTOL BUGLE, "All the News There is to Print"—E. Betts Cofer, President and Publisher. Of all people! Why, I knew him when—

Well, after reading an editorial on "The Nuisance of an Education," bold headlines caught my eye: "Amazing New Invention Patented—THOMASCOPE will prove invaluable to civilization. Permits operator to see persons anywhere on earth." I read on—the inventor had a wonderful laboratory on top of the Chrysler Building, in New York, and was working day and night on his invention. Having long searched for such an instrument myself, and failed, I resolved to set out that very night for New York to visit the inventor and see such a miracle worked.

As I had my own plane, I reached New York early the next morning and went immediately to the laboratory. I was ushered in by a stately Secretary (I had the feeling that I had met her before) who asked me if I had arranged for a conference. At that, I looked so embarrassed and pathetic that she exclaimed, "Why, Judy Allen!" Dawn broke, and I returned, "Why, Margie Lynn Vance!" "Just wait till you meet the Professor," she exclaimed. Whereupon, in walked a tall, learned-looking man, a far-away look in his eyes. I received a second shock within the minute as I recognized my old schoolmate, Jacob Mack Thomas. No wonder it was called the Thomascope! I stated the object of my visit, and Mack said he would prove that his invention would work by letting me see what all my fellow students of the Class of 1931 were doing at that time. We entered a dark room, in one end of which was a screen. "Keep your eyes on that," he said, "your friends will appear there." I laughed in disbelief, then turned toward the instrument as I heard a faint click. I saw nothing but a small, illuminated dial and several buttons beneath it. "All set!" And then I almost rose to my feet! For there on the screen, midway between the base and summit of famed Mt. Everest, was Billy Barker, wearing the contented look of an adventurer and explorer.

The scene shifted to Manchuria, where, notebook in hand, we found Elizabeth Purvine, on leave of absence from the University of Alabama where she occupies the Chair of History (one of 'em, that is!). The following picture showed Nelia Richardson as capable substitute during Elizabeth's absence. Next came Mary Berens, springing a test on her French IV pupils at Happy Valley in order that she might finish the book she was reading. The book in her hand was "El Poetica Confurioso" and the author's name in fancy gold script revealed Mary Frances Barbe's latent talent to the eyes of the world.

Again the scene changed, and I saw an airplane gliding gracefully to earth. It landed, and taxied up to the hangar of the Transcontinental Airway Service, Inc., of St. Louis, owned and operated by T. Gannaway. From the hearty greetings and congratulations, it was evident that Kathryn Keesling had just returned from an all-stop flight to each of America's most famous resorts. I wasn't surprised to find Kat such a high-flier, as *that* started back in the days when she jumped center for the Vikingettes. Another section of the Airport showed weary fliers pausing for refreshment at the Transcontinental Tea Room, managed by Nelle Lowe and Edna Hunigan.

A blaze of theatrical lights and signs showed the next place to be Hollywood. Bold posters and lights announced the newest television-talkie, "Midsummer Night's Scheme," co-starring the famous Thomas A. (ex-Tom) Wade and Lillian Latture. Their positions at the top of the theatrical ladder resulted from the encouragement they received in the 1931 Senior "Who's-Who."

In the next scene, a tense audience in Carnegie Hall, New York, thrilled to the notes of Anne Taylor's violin as she gave the first of a series of concerts. Anne's inspiration came from the efficient Manager (they do say he holds the position for life!). Also in New York was the Reverend John Lilburn Heninger, D. D., pastor of the Riverside Church. The brief picture I had of Dr. Heninger was in his study, which looked more like a public library to me, for besides theological discourses, there was a surprising number of volumes of Shakespeare—they say habit is a great thing. A card on one of the desks in his study bore the words: "Elizabeth Childress—Secretary." Still, I might have known John would have had none but the best! Another scene in New York showed Myrtle Greer smiling in the New York Stock Exchange. "Greer Preferred Gum" was up two points—and Myrtle was sure of Graham's bread for dinner.

The next episode in that ever surprising revelation of the fate of '31 took me to Cincinnati, Ohio, where George Dove, Attorney-at-Law, slightly gray at the temples (due to his interviewing of reporters and posing for pictures), was pleading the case of Thelma Rawn versus Virginia Carr and Virginia Love. It seems that the Virginia Beauty Salon ("Acquire that Virginia Beauty") had failed to give satisfactory service to Thelma Rawn, then appearing as leading lady in a well-known Follies, consequently "Red" had sued the two Virginias' Beauty Shop. Witnesses for the defendant were two of Cincinnati's society leaders, Dorothy Denton and Mary DeVault, who created a sensation in court by wearing the very latest styles.

Then a flash on the screen showed the studio of Station LMNO, in Chicago, where the little fellow whispering into the microphone proved to be none other than Henry Proffitt. In the control room of the same powerful station, James Riley was the alert technician.

The next scene brought tears to my eyes and a sigh, "Oh! Them wuz the good ole days!" for before me stood Tennessee High, in all its glory, and inside, behind the Principal's desk, sat Mary Anna Stone, drawing figures on the backs of envelopes. Besides directing affairs at Tennessee High, Mary Anna is also President, Vice-President, Secretary and Treasurer of the Stone Entertainment Bureau—Speeches and Music for Any Occasion. Another scene in Bristol showed Mr. and Mrs. _____, well, anyway, you know

Alma Lee Martin—"At Home" in honor of Senator Nancy Peoples, who talked her way to fame and position as Tennessee's first woman Senator. Nancy always could put Floyd Gibbons to shame, couldn't she?

Baltimore was the next place honored by one of my former classmates. Here we find Doris Harrold on the faculty of Peabody Conservatory—one of her subjects is Harmony, and she practices what she preaches, especially with a certain dignified lawyer (Harvard, if you please).

In Greenwich Village, New York, there were three illustrious members of the Class of '31—Edith Davis, whose new book, "Why We Behave Like Fish," proved a sensation; Isabella Boy, Artist and Interior Decorator; and Mary Ruth Phipps, noted Astronomer. Mary Ruth, so I've read in the *New York Times*, has recently discovered two new planets hitherto unknown. Also, in New York was Louise Andrews (Andrews School of Dancing), successor to Arthur Murray. Louise's fame has spread all over America and Europe.

The next scene showed a magnificent hospital in Cleveland, Ohio, the Chief Surgeon of which was Lucille Umberger (wasn't she always the cut-up of her class?). Three of her assistants were Beulah Swiney, Dietician; Elizabeth White, Head Nurse, and Genevieve Walker, Superintendent.

A quick change brought the happy faces of Arbutus McCroskey and Hazel Williamson, excellent housekeepers in a North Carolina town—feeding preachers evidently keeps them busy.

The next picture on the screen was a pleasant surprise, for lo and behold! there smiling for the photographers was Lucile Wyman, first woman Manager of the International Olympic Games—direct result of her experience as Manager of the 1931 Basketball Girls.

A Confectioner's Shop in Knoxville showed what Alma Smith, Lucille Sparger and Hazel McClellan were doing. In the same city, Paul Glover was tootin' baritone for an orchestra; and Paul Boy and Virgil Claman owned and operated several chain stores.

At Newport, R. I., Frances Helton was giving the first of the season's social affairs. One of the guests of honor was Willetta Huff, enroute to Bristol from Paris where she had spent the winter. Willetta brought back the report that Zula Rhea Thomas was making quite a success in Paris as a mannequin at LeLong's.

Again the scene shifted, and we saw a low racer tearing down the tracks at Miami. Imagine my surprise upon recognizing Mabel Thomas, fastest woman driver in the world!

Another moment, and we beheld James Smalling sitting in his private office of the Smalling Scooter Company, at Detroit—"Smalling Scooters at Smaller Prices."

The last picture flashed on the screen was one I shall never forget. It showed the two renowned comedians, "Nit and Wit," alias David Gray and Robert Coleman, on vacation in one of the Thousand Islands (they plan to spend a month on each), while obliging natives stand guard with fans and cool drinks.

Thus ended the amazing revelations of the Thomascope. After congratulating the Professor on his invention and talking over the scenes we had witnessed, I said good-bye to Mack and Margie, climbed in my plane and returned to my camp, where, undisturbed, I mused upon the happenings of my comrades of the past.

—JUDY ALLEN, *Class Prophet*.



JUNIORS

Junior Class

Fall Term Officers

BOB ANDERSON, *President*
 RICHARD RESER, *Vice-President*
 KATHRYN WOOLSEY, *Secretary*
 UNA MAE ROGERS, *Treasurer*
 MR. ROWE.....

Spring Term Officers

ROBERT SMITH, *President*
 ROBERT ANDERSON, *Vice-President*
 MARY KEESLING, *Secretary*
 "BUD" PHIPPS, *Treasurer*
Sponsor

ALLEN, JUNE
 ALLEN, MARY KATHERINE
 ANDERSON, ROBERT
 BAIRD, DONALD
 BARKER, JACK
 BEIDELMAN, GUSTA LEE
 BLEVINS, MARY
 BOOHER, ELIZABETH
 BROWN, EUGENE
 BROWN, LEONARD
 CLARDY, MARY
 COLLINS, HAZEL
 COOK, KATHRYN
 DORIOT, JACK
 DAVIS, GEORGE
 EGGERS, BONETA
 ELLENBURG, FRANCES
 ELLENBURG, JAMES
 ESSER, ED
 FLEENOR, DELMER
 FLEENOR, DRYDEN
 FLEENOR, WARREN
 FOGARTY, JACK
 FORGEY, JAMES
 FRANKLIN, FLORENCE
 GOODMAN, OLA

GREEN, BENJAMIN
 HAMLET, SARAH
 HENINGER, CLAUDE
 HUGHLETTE, JOHN
 JONES, SARAH
 KEESLING, MARY
 KESNER, KATHERINE
 KING, AGNES
 KING, ALBERT
 KING, WILLIAM
 KYLE, MABEL
 LEE, G. K.
 LESLIE, RANDOLF
 LOWRY, ELIZABETH
 MARCY, JOHN
 MCGOLDRICK, LOUISE
 MOONEY, GORDON
 MORTON, LOUISE
 NASH, HAZEL
 O'DELL, MARTHA
 O'DELL, TOM
 OWEN, HUBERT
 OWEN, NELL
 OWENS, MARGARET
 PHIPPS, CHARLES
 PHIPPS, HOWARD
 POORE, NELLIE

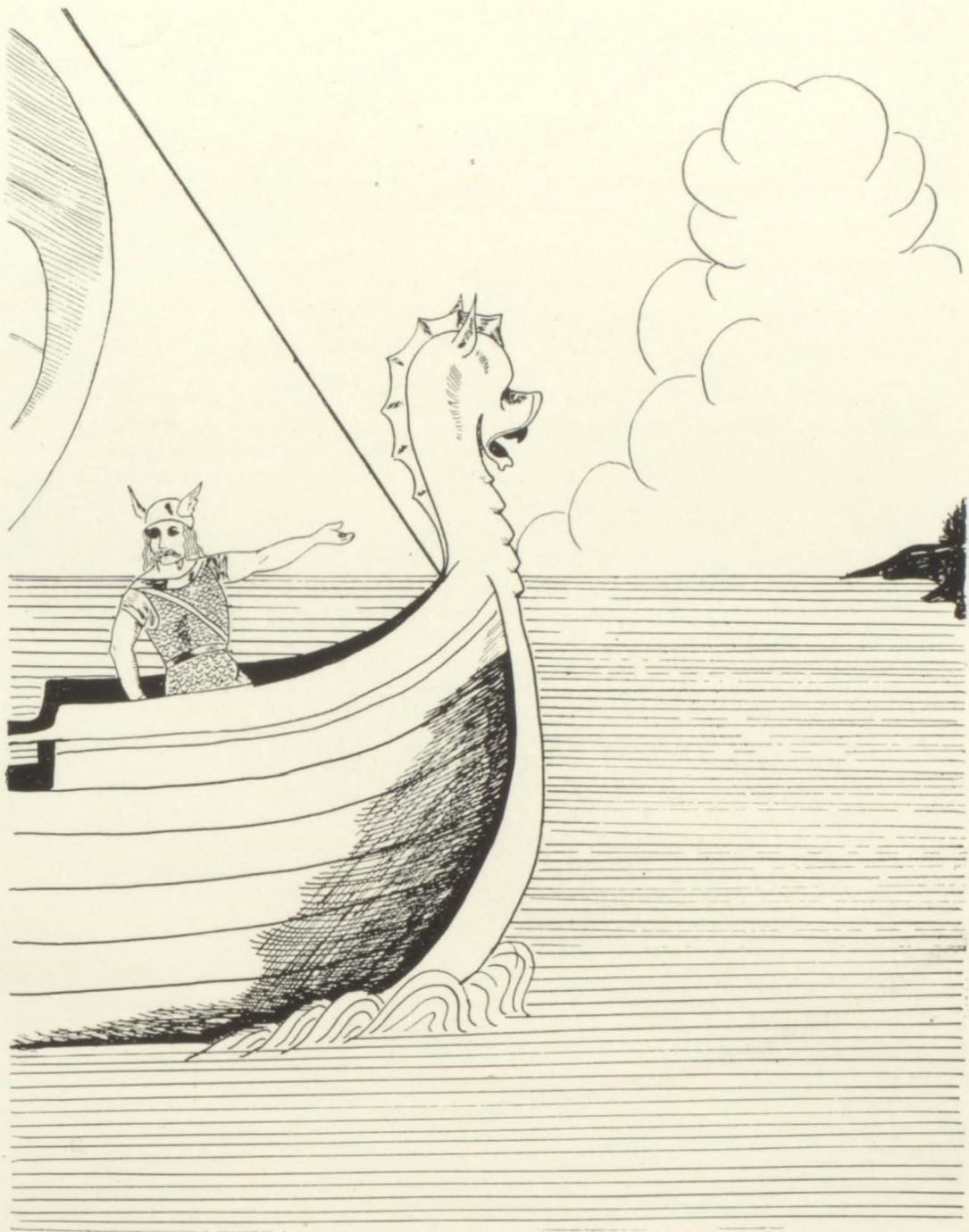
PROFIT, LANE
 RAY, W. A.
 RESER, RICHARD
 RHEA, JULIA
 ROGERS, UNA MAE
 RUTHERFORD, ROBERT
 SCHERER, WALLACE
 SENEKER, SARAH
 SHUMAKER, ADRIAN
 SIMPKISS, JACK
 SLAGLE, HELEN
 SMITH, ROBERT
 SPARGER, LOIS
 SWAN, CHARLES
 SWINNEY, PAUL
 THOMAS, NATHAN
 TURNER, NELLIE
 VANCE, TED
 WAGNER, GLENN
 WARREN, MARION
 WEAVER, BONNIE
 WHITE, GLADYS
 WHITTAKER, ADA
 WHITTAKER, HAZEL
 WOOD, LUCY
 WOOLSEY, KATHRYN



The Juniors

Hard driven and fighting,
Our brave ship, the Viking,
Sails on thru the wind and the wave;
As the haven we reach,
We see leaving the beach,
Another ship sturdy and brave.

We come, and we go,
Voice steady and low,
We give you God speed and fair weather:
Hoping some day,
All clouds blown away,
To meet and to anchor together.



SOPHOMORES

Sophomore Class

Fall Term Officers

WALTER NUCKOLLS, *President*
 LUTHER HODGE, *Vice-President*
 JOSEPHINE SENTER, *Secretary*
 EULA MASSENGILL, *Treasurer*
 MISS JAMES

Spring Term Officers

NANCY EMMERT, *President*
 LUTHER HODGE, *Vice-President*
 EMILY WADE, *Secretary*
 JUNE SMITH, *Treasurer*
 *Sponsor*

ANDERSON, LUCILE
 ARNOLD, ELIZABETH
 BARKER, JUANITA
 BARR, MARTHA
 BELL, CUSTIS
 BOOHER, LUCY
 BOY, GLENN
 BOYD, WILLIAM
 BROWN, JAMES
 BUCKLES, MARY DE
 CAMPBELL, BILL
 CAPPELL, PEGGY
 CARTER, JAMES
 CHILDRESS, HARRY
 CHILDRESS, LUCILE
 COMBS, ALICE
 COUNTS, THELMA
 COWAN, TAYLOR
 CROSS, CATHERINE
 DICKSON, VIRGINIA
 EARHEART, KATHLEEN
 EASTRIDGE, DEWEY
 HILTON, MARY
 HODGE, LUTHER
 HUFF, MARGARET
 HUGHLETT, JAMES
 HUNT, HUBERT
 HURD, WOODROW
 JARRETT, W. J.
 JONES, LAWRENCE
 KAYLOR, BURDETTE
 KENSINGER, FRANCES
 KETRON, GEORGE
 KINCH, CHARLES
 KING, DANIEL
 KING, LOUIS
 LACEY, CLYDE

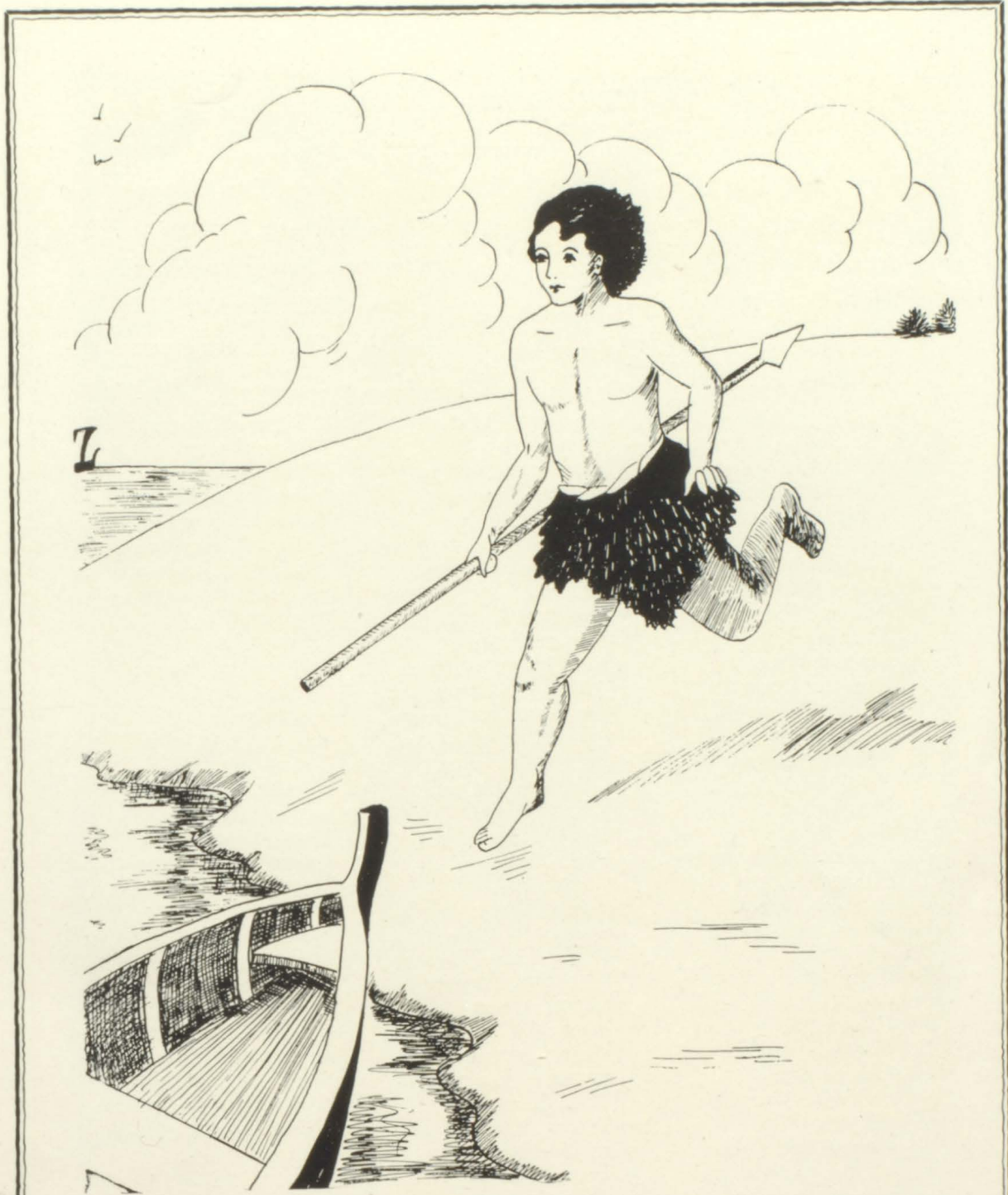
LANE, CLAUDIE
 LESLIE, BOB
 LESLIE, CARL
 LEVINE, JENNIE
 LINDAMOOD, KERMIT
 LYNCH, FRANCES
 MASSENGILL, EULA
 EMMERT, NANCY
 EVERSOLE, KATHERINE
 FEAGINS, ANNIE
 FLEENOR, LUCILE
 FLETCHER, ALICE
 FORD, RALPH
 FORGEY, CHARLES
 FORGEY, IRENE
 FRANCIS, GUY
 FRANKLIN, LOUISE
 FURLOW, MACK
 GRAHAM, BRUCE
 GRAY, THELMA
 GURLEY, VIRGINIA
 HAGY, HAROLD
 HARKLEROAD, LOUISE
 HARROLD, ROBERT
 HELMS, JACK
 POWERS, RUTH
 QUALES, GRACE
 RICHARDS, CHARLES
 RIORDAN, ETHEL
 ROBERTS, HAROLD
 RUMLEY, YVONNE
 RUTHERFORD, IDA
 RUTHERFORD, ROBERT
 SENTER, JOSEPHINE
 SHANKEL, SAM
 SHELL, SARAH

SMITH, JUNE
 MCGOLDRICK, H. P.
 MERCER, MILDRED
 MONTGOMERY, MARGARET
 MORISON, TURNER
 NELSON, EFFIE MAE
 O'DELL, EDITH
 O'DELL, KATHLEEN
 O'DELL, S. L.
 OSBORNE, JOE
 PEOPLES, DAVID
 PERRY, TED
 PETERS, MARTIN
 PETTIGREW, CARL
 PHARR, SARAH MOORE
 PHIPPS, RUTH
 POE, MARJORIE
 POORE, HAZEL
 POWERS, EDWIN
 STANSBURY, LOUISE
 STONE, MILDRED
 STULTZ, ERNEST
 SWINNEY, EDGAR
 THOMAS, ELIZABETH
 TIPTON, ELIZABETH
 TIPTON, WILLIAM
 WADE, EMILY
 WARREN, MARGARET
 WASSOM, RUTH
 WATSON, THELMA
 WITT, BEULAH
 SNAPP, L. B.
 SOLOMON, ELEANOR
 SOLOMON, EVELYN
 WOOD, KATHERINE
 YOUNG, MARY SUE
 SPITZER, MABLE





Senior Statistics



FRESHMEN

Freshman Class

Fall Term Officers

CARL PETTIGREW, *President*
 JUNE SMITH, *Vice-President*
 MARY NIDIFFER, *Secretary*
 MARGARET HUFF, *Treasurer*
 MISS BROCE

Spring Term Officers

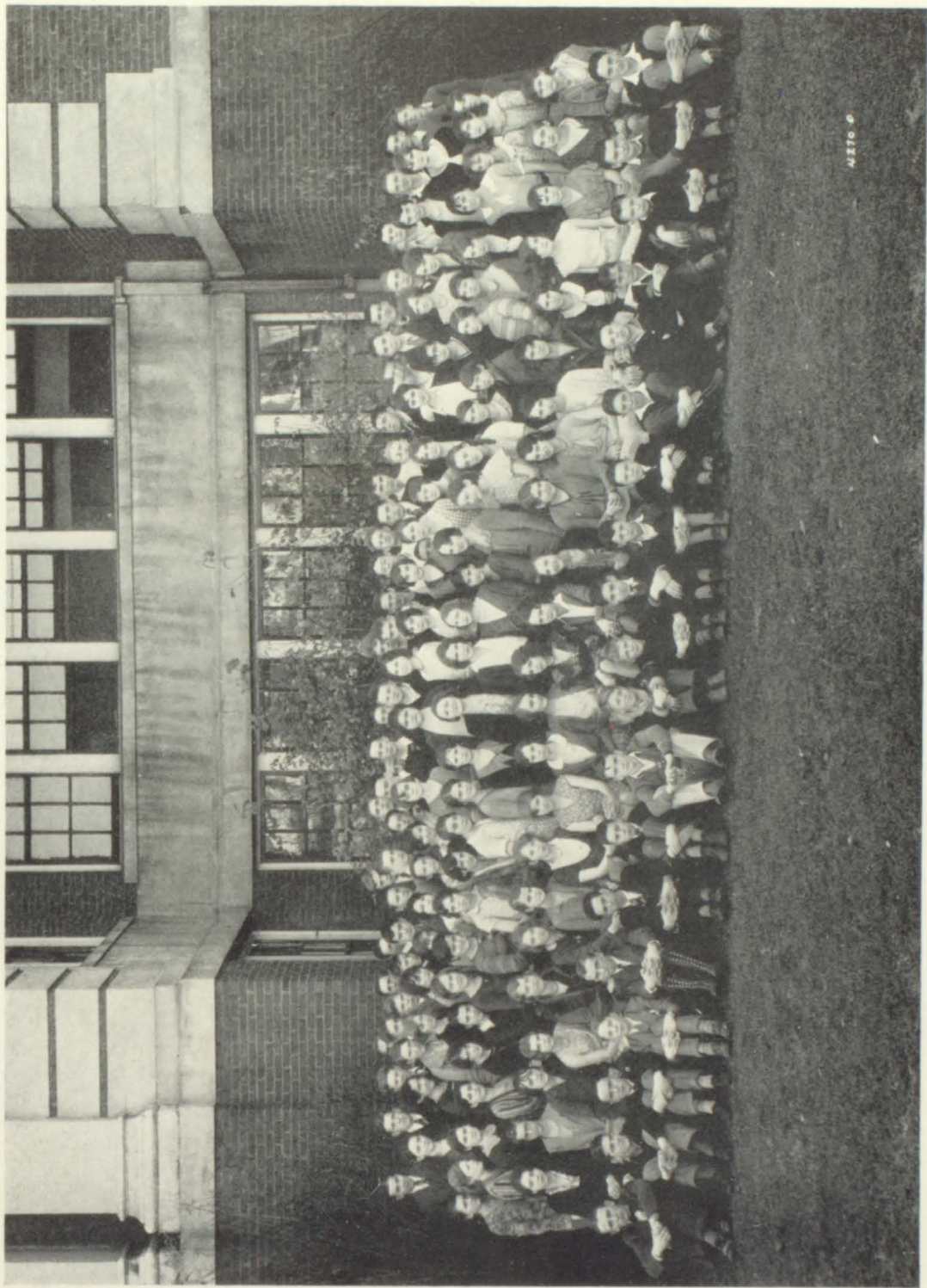
JAMES WOLFORD, *President*
 KATHLEEN RUTHERFORD, *Vice-Pres.*
 KELLY MCKEE, *Secretary*
 MITCHELL ALLEN, *Treasurer*

Sponsor

ALLEN, MITCHELL
 ANDERSON, ALEX
 ANDERSON, CARL
 ANDERSON, OSCAR
 ARBUCKLE, BETTY
 ARNOLD, MILDRED
 BAIRD, MARY
 BAKER, HELEN
 BARKER, HELEN
 BARRON, JOHN
 BERENS, FORREST
 BEVINS, FANNIE
 BLADES, MARTHA
 BOOHER, KENNETH
 BOOHER, WOODROW
 BOY, MARGARET
 BOY, REEVE
 BRAY, MARY
 BRINKLEY, ELIZABETH
 BROWN, MARY
 BRUMMIT, DAVID
 BUCHANAN, HELEN
 BYRD, EVELYN
 CALDWELL, ALICE
 CARR, MARGARET
 CARTER, SAM
 CAWOOD, MARIAN
 CLARK, BOB
 CLAMAN, NANETTA
 COFFEY, CYRIL
 COFFEY, WILLIAM
 COMBS, GAYNELLE
 COMBS, MILDRED
 COOPER, ELIZABETH
 COOPER, OGOAL
 CROSS, HERBERT

CRUMLEY, JUNIOR
 DALTON, JAMES
 DORiot, KATHERINE
 DARTER, HOWARD
 DOUGHERTY, JIM
 DAVIDSON, HAYNES
 DENTON, EARLYNE
 DULANEY, FRED
 EMMERT, RUTH
 FALLIN, FLORA
 FINE, KENNETH
 FLEENOR, EUGENE
 FLETCHER, ELIZABETH
 FRANKLIN, TYLER
 GALLIHER, GEORGE
 GODSEY, FRED
 GRAY, NELLIE
 GRAY, NILES
 GREEN, BILL
 GREEN, RUTH
 HAGAN, SALOME
 HARKLERoad, ADRIAN
 HAWKINS, ELIZABETH
 HICKS, ARTSEL
 HICKS, J. C.
 HICKS, OZELLA
 JOHNSON, WINFORD
 JONES, LUCILE
 KESNER, GENEVIEVE
 KING, SARA
 LESLIE, JOE
 LINDER, ONEITA
 LOVE, H. L.
 LYNCH, MARTIN
 LINDAMOOD, VERNA
 MANESS, CLYDE

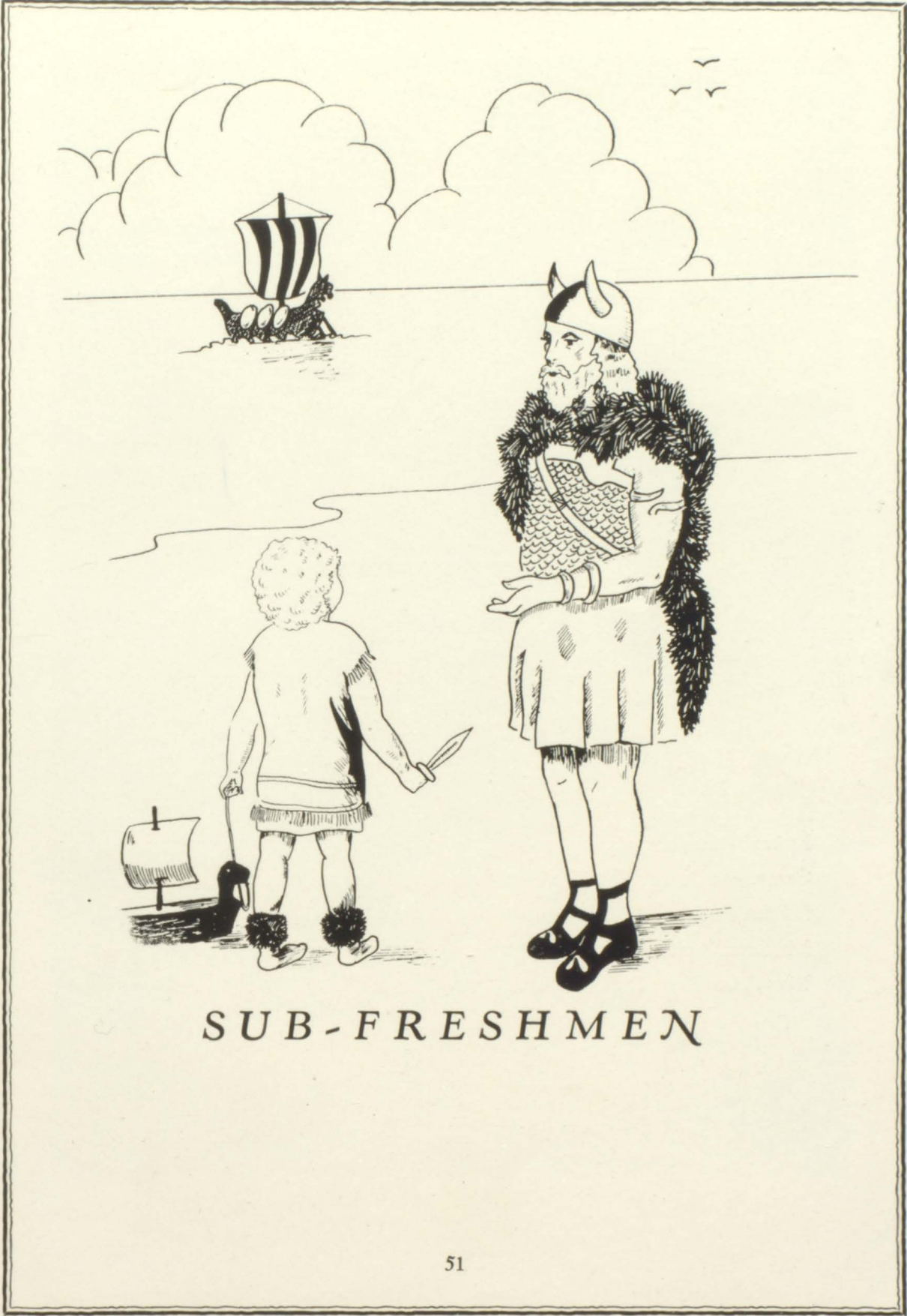
MARCEY, HERBERT
 MCKEE, KELLY
 MORTON, FRANK
 SMALLING, GEORGE
 SMITH, GEORGE
 SMITH, MARY LYNN
 SNODGRASS, JOSEPHINE
 SOLOMON, DOROTHY
 SPARGER, DENNIS
 SPARGER, INA
 STATZER, IDA MAY
 STATZER, IONA
 STOCKTON, LEWIS
 STOPHEL, J. L.
 TANKERSLEY, W. S.
 TAYLOR, MABEL
 THOMAS, GRACE
 THOMAS, MAURICE
 TRAMMELL, GEORGE
 VINEYARD, GLENN
 VIRES, CLEO
 WALSH, ARVEL
 WATSON, FRANK
 WEAVER, ERNEST
 WEAVER, INA
 WEAVER, MARGARET
 WHITTAKER, ELSIE
 WHITTAKER, HENRY
 WHITTAKER, MARJORIE
 WILLIAMSON, CLYDE
 WILSON, BRADY
 WILSON, PEARLE
 WOLFORD, JAMES
 WOOD, JANE
 WOODARD, CLAUDIE
 WYMAN, ELOISE



1170 9

Who's Who in the Senior Class

GEORGE DOVE	Most Dignified
THOMAS WADE	Laziest
VIRGINIA LOVE	Neatest
ALMA LEE MARTIN	Most Lovable
JUDITH ALLEN	Wittiest
ROBERT COLEMAN	Best-looking Boy
NELIA RICHARDSON	Best Student
JOHN HENINGER	Most Popular Boy
JUDITH ALLEN	Most Popular Girl
ANNE TAYLOR	Sweetest Girl
KATHERINE KEESLING	Best All-round Girl
JOHN HENINGER	Best All-round Boy
PAUL BOY	Most Bashful Boy
ISABELLA BOY	Most Bashful Girl
THOMAS WADE	Class Sheik
MARY ANNA STONE	Most Talented
ALMA LEE MARTIN	Most Winsome Girl
JUDITH ALLEN	Most Original
JUDITH ALLEN	Most Loyal
TOM GANNAWAY	Most Athletic Boy
KATHERINE KEESLING	Most Athletic Girl
LILLIAN LATTURE	Prettiest Girl
VIRGINIA CARR	Cutest Girl



SUB-FRESHMEN

8B Class Officers

Fall Term

JOHN CALDWELL, *President*
KENNETH HICKS, *Vice-President*
ELISABETH ROLLINS, *Secretary*
EARL FLEENOR, *Treasurer*
MISS ANNA BELLE LYNN *Sponsor*

Spring Term

MARTHA SHELTON, *President*
ELIZABETH COOKE, *Vice-President*
JULIA JOHNS, *Secretary*
DOROTHY HORNER, *Treasurer*
MISS ANNA BELLE LYNN *Sponsor*



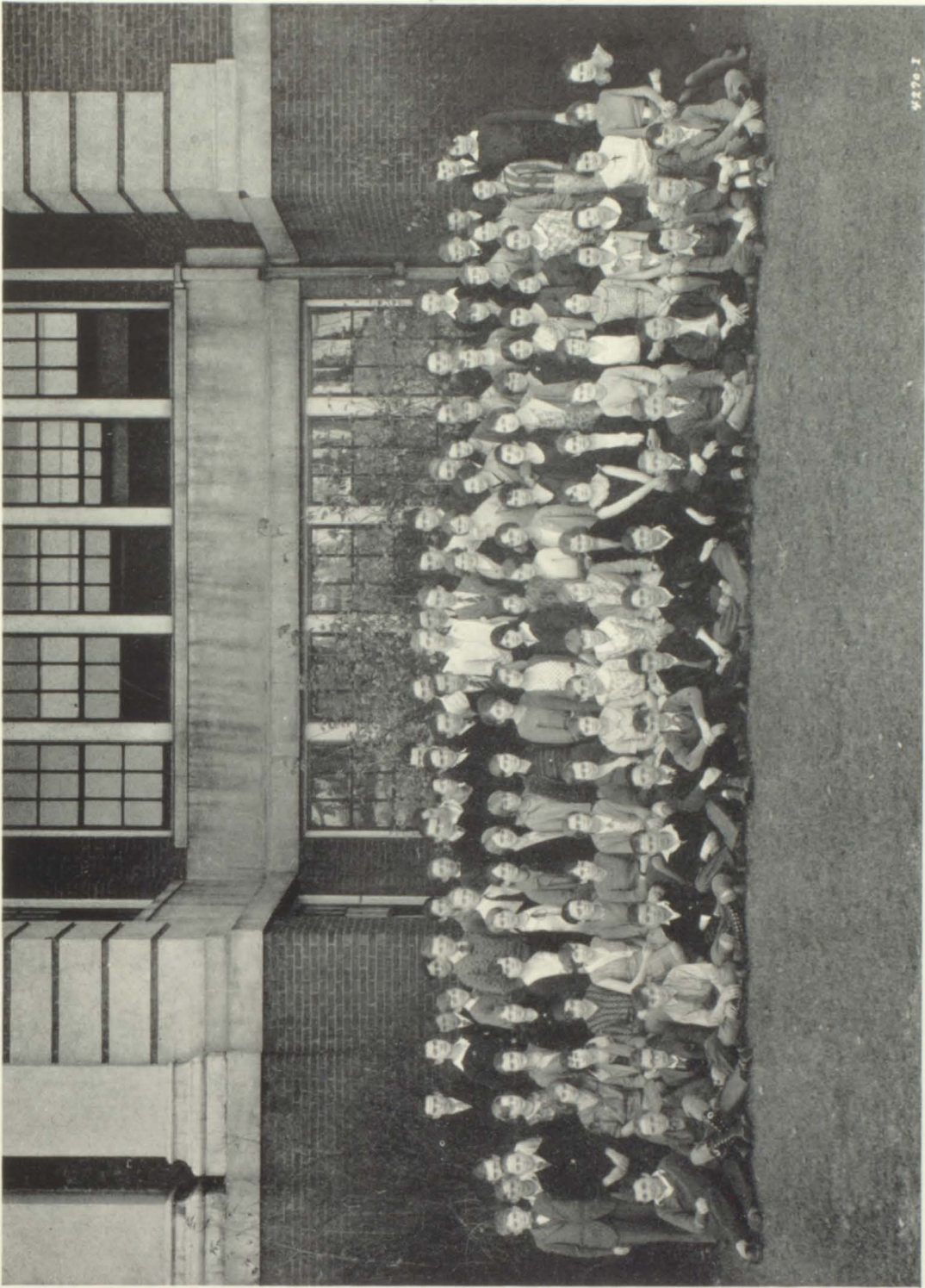
8A Class Officers

Fall Term

ELOISE WYMAN, *President*
CATHERINE DORIOT, *Vice-President*
EUGENE FLEENOR, *Secretary*
MITCHELL ALLEN, *Treasurer*
MISS ANNA BELLE LYNN *Sponsor*

Spring Term

HUGH KING, *President*
ELISABETH ROLLINS, *Vice-President*
EARL FLEENOR, *Secretary*
JEAN STICKLEY, *Treasurer*
MISS ANNA BELLE LYNN *Sponsor*



9576-1

Sub-Freshmen

8B Class

ADAMS, ELIZABETH
 AGER, LEWIS
 ALLISON, J. R.
 ARRANTS, MONROE
 BARNET, EVELYN
 BARR, CURTIS
 BAUMGARDNER, FRANCES
 BAUMGARDNER, MORRIS
 BLEVINS, EFFIE
 BOY, LOUISE
 BRAY, EDITH
 BUNN, ZELMA
 BURNETTE, VIOLET
 CLAYMAN, HOWARD
 CLAYTON, CHARLES
 COOKE, ELIZABETH
 COWAN, ROBERT
 EDWARDS, ROY
 FARRIS, THELMA
 FAUST, W. B.
 FINKS, THOMAS
 FINLEY, CHRISTINE
 FOGARTY, ZILPHA
 FORD, STANLEY
 FRANCIS, GLADYS
 GAMMON, GEORGE
 GODSEY, IVAN
 GOODMAN, FARRA
 HAGY, MARIUM
 HARR, CLIGTON
 HARR, RUTH
 HART, MARGARET
 HAGEY, ELIZABETH
 HICKAM, IMOGENE
 HICKS, R. J.
 HILTON, EMMETT
 HOBBS, VERNON
 HODGE, JAMES
 HOGSETT, CHARLES
 HORNER, DOROTHY
 HUNT, CURTIS
 JOHNS, JULIA
 JOHNSON, MILLARD
 KING, NANCY
 KING, ROBERT
 KYLE, W. T.
 LATTURE, ANNIE

LEE, MARY
 LOWE, EARL
 LOWE, EVELYN
 LOWE, HAVEN
 MARTIN, ELIZABETH
 MATTERN, MARY
 MCCALL, ZADY
 MCCLELLAN, SHERMAN
 MCGHEE, BARCLAY
 MCNEW, CHARLES
 MILLER, EUGENE
 MORLEY, KERMIT
 MORTON, RUTH
 NEAL, MARY RUTH
 NEAL, LOUISE
 OFFIELD, JUSTIN
 PELTIER, JUNIOR
 PERSHING, JEANETTE
 PHELPS, RUTH
 PHIPPS, BERYL
 PHIPPS, MARY JEWELL
 POORE, LEONA
 RAWN, RUTH
 REED, JAMES
 REPASS, JAMES
 RICHARDS, FRANCES
 ROSS, BELLA
 SHELTON, MARTHA
 SMITH, KATHERINE
 SPARGER, JACK
 STONE, MARION
 SWINEY, LUCILLE
 THOMAS, JOHN
 TIPTON, REBA
 TORBETT, MARGARET
 UMBERGER, ELINOR
 WILKERSON, JAMES
 WHITAKER, MILDRED
 WHITE, THOMAS
 WHITTAKER, JUNIOR
 WYATTE, HAZEL
 ZORY, SAM

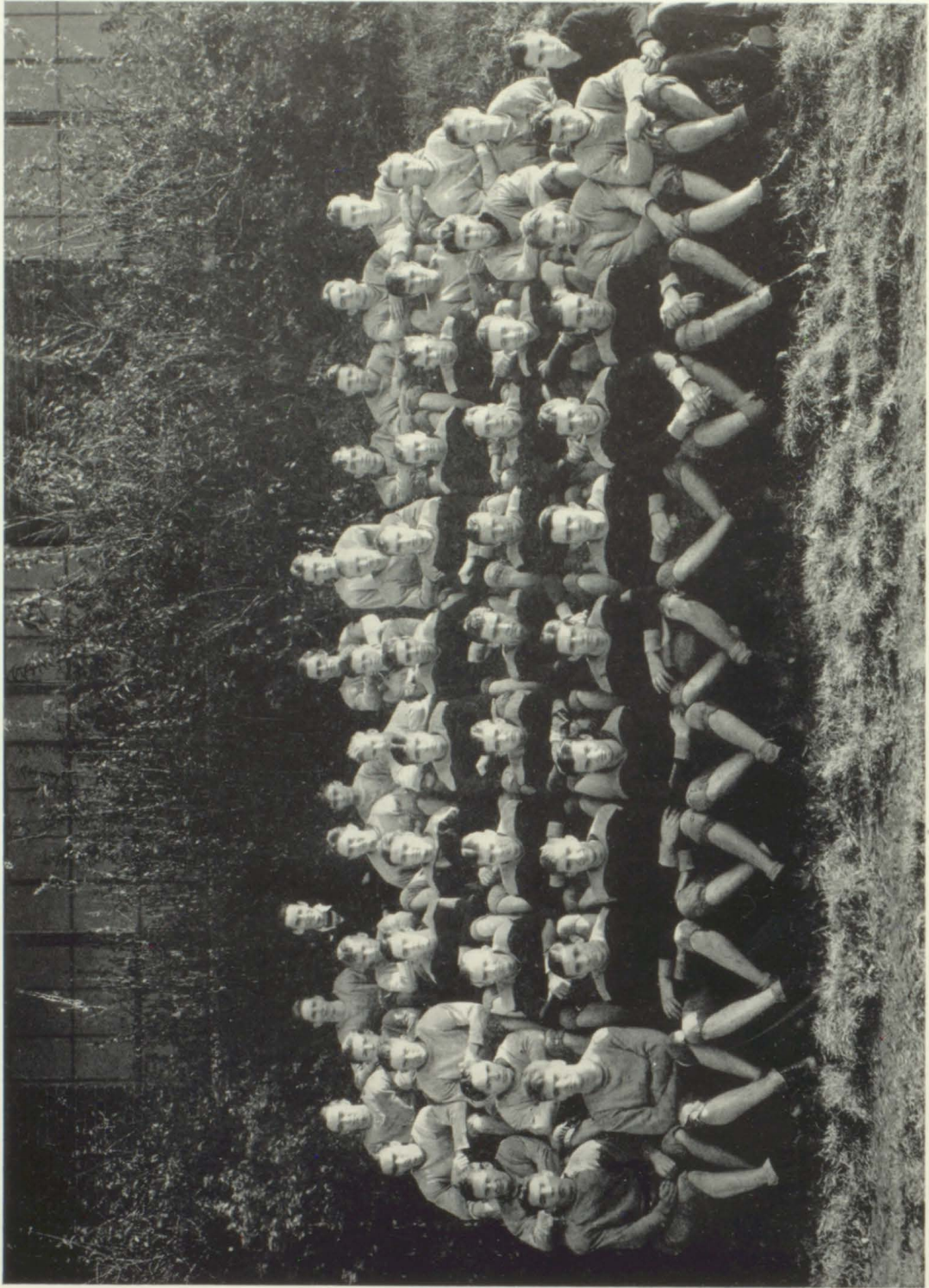
8A Class

ADAMS, RANDOLL
 ARNOLD, ERMA
 BAKER, RALPH
 BELLE, LESTER
 BELLE, PAT

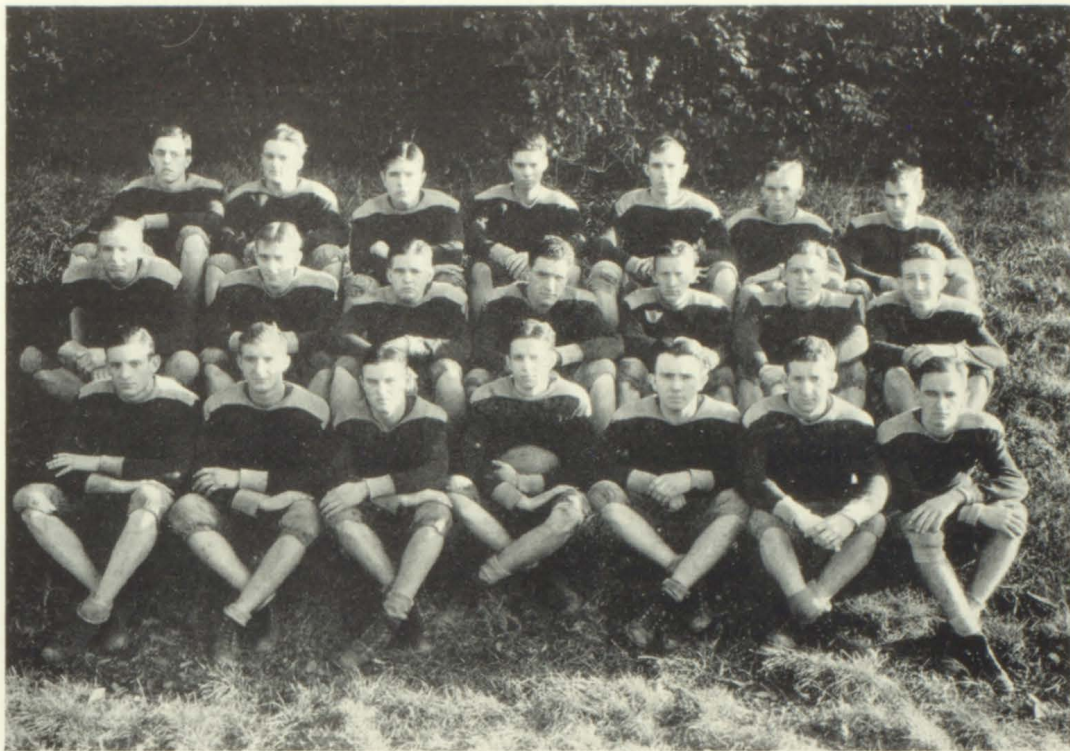
BLACKLEY, LOUISE
 BLEVINS, CHARLES
 BOOHER, MARGARET
 BROWN, GLENNA BELLE
 BUCKLES, RUTH
 BURNETTE, RUBY
 CALDWELL, JOHN
 CAMPBELL, BERNARD
 CASH, JACK
 COWAN, CHARLES
 FELTY, J. E.
 FLEENOR, EARL
 FOGARTY, THOMAS
 GELLESPEE, CHARLOTTE
 GURLEY, ANNA PEARL
 HATCHER, IRWIN
 HAWKINS, CHARLES
 HAWKS, GEORGIA LEE
 HICKS, KENNETH
 HOWARD, LAFETTE
 HULL, LEROY
 HUNIGAN, ROY
 JUSTICE, BILL
 KENNEY, BURTON
 KING, CLYDE
 KING, HUGH
 LEGG, MILDRED
 LOWRY, CHES
 MCNEW, T. C.
 MORELEY, LOUISE
 MORRELL, WILLIAM
 O'DELL, JOE
 OWEN, BUELL
 PHILLIPPI, VIRGINIA
 POORE, ORVILLE
 PROFFIT, GLENN
 RHEA, JOE
 ROBERTS, EVAN
 ROLLINS, ELIZABETH
 SHELL, ANNIE LAURIE
 SMITH, HELEN
 STICKLY, JEAN
 STAUFFER, MARY
 SWINEY, GENEVA
 THOMAS, MARY VIRGINIA
 WALLACE, VERA
 WEAVER, CLARA
 WEBB, EDYTHE
 WILLIAMS, JAMES



ATHLETICS



FOOTBALL SQUAD



FOOTBALL TEAM

Football Schedule—'30

Tennessee.....	19	Emory Frosh.....	14
Tennessee.....	20	Mountain City.....	7
Tennessee.....	13	Erwin.....	0
Tennessee.....	7	Morristown.....	13
Tennessee.....	31	Johnson City.....	6
Tennessee.....	6	Kingsport.....	13
Tennessee.....	20	Elizabethton.....	0
Tennessee.....	25	Greeneville.....	0

CITY CHAMPIONSHIP

Tennessee.....	12	Virginia.....	0
Totals.....	153		53

LETTERMEN

TOM TORBETT, *Captain*
 CHARLES PHIPPS
 GLENN WAGNER
 EDWARD ESSER
 S. L. O'DELL
 W. S. TANKERSLEY

W. A. RAY
 WILLIAM GREEN
 HUBERT OWEN
 BILLY BARKER
 "BUD" PHIPPS
 CLYDE HELTON

TOM GANNAWAY
 CARL PETTIGREW
 BOB ANDERSON
 HAROLD ROBERTS
 JACK BARKER

H. C. BONDURANT..... *Manager*
 JOHN H. BARNHILL..... *Coach*

Football Review—'30

On the second Monday in September, about sixty men responded to Coach Barnhill's call for football candidates for the season of 1930. The outlook for a great team seemed promising as all but four lettermen returned from last year's squad. To further aid the cause, a wealth of reserve material was on hand. This material proved to be of great value before the season ended.

The entire squad then went through several weeks of training and conditioning in preparation for a season that was to be one of the hardest in the history of football at Tennessee.

The first game of the season was played against the strong Emory and Henry Freshmen at Tenneva Field. This game proved to be one of the hardest games of the year, and Emory thought she had the game tucked away. In the middle of the last quarter Lady Luck smiled on Tennessee and permitted Eddie Esser to step across the goal line after intercepting an Emory pass. The game ended a few minutes later, Tennessee winning 19 to 14.

Mountain City returned the following week, hoping to repeat their victory of last year. But alas! they were sorely disappointed. Tennessee out-played them in every department and rolled up a 20 to 7 score ere the game ended.

Tennessee took to the road the following week and journeyed to Erwin. "Monk" Helton featured some of the famous "intestinal fortitude" in the game, and Tennessee returned with another victory. The final score was Tennessee, 13; Erwin, 0. This was Tennessee's first conference victory of the year.

Morristown came to Bristol with an impressive record and proceeded to hand out another heart-breaking defeat to Tennessee. Our team played splendid ball but lacked the drive to send the winning points over. The score was the same as last season: Tennessee, 7; Morristown, 13.

Johnson City presented the next conference foe of Tennessee on Tenneva Field. Due to the efforts of Eddie Esser, Charles Phipps, Torbett, O'dell, and Maness the game was turned into a track-meet. During the third quarter an epidemic of intercepted passes and touchdowns seemed to strike Tennessee, and the final score was: Tennessee, 31; Johnson City, 6.

Tennessee locked horns with Kingsport the next week in the most important game of the year. Tennessee lost one of the closest and hardest fought games of the season by the score of 13 to 6.

The next Friday, Elizabethton came, saw, and was defeated, much to their dismay. The score was: Tennessee, 20; Betsy, 0.

At Greeneville the following week, Tennessee, on a muddy field, defeated the Greeneville team, 25 to 0.

As a result of Erwin's defeat of Kingsport the "Big 5" Championship was tied between Kingsport and Tennessee.

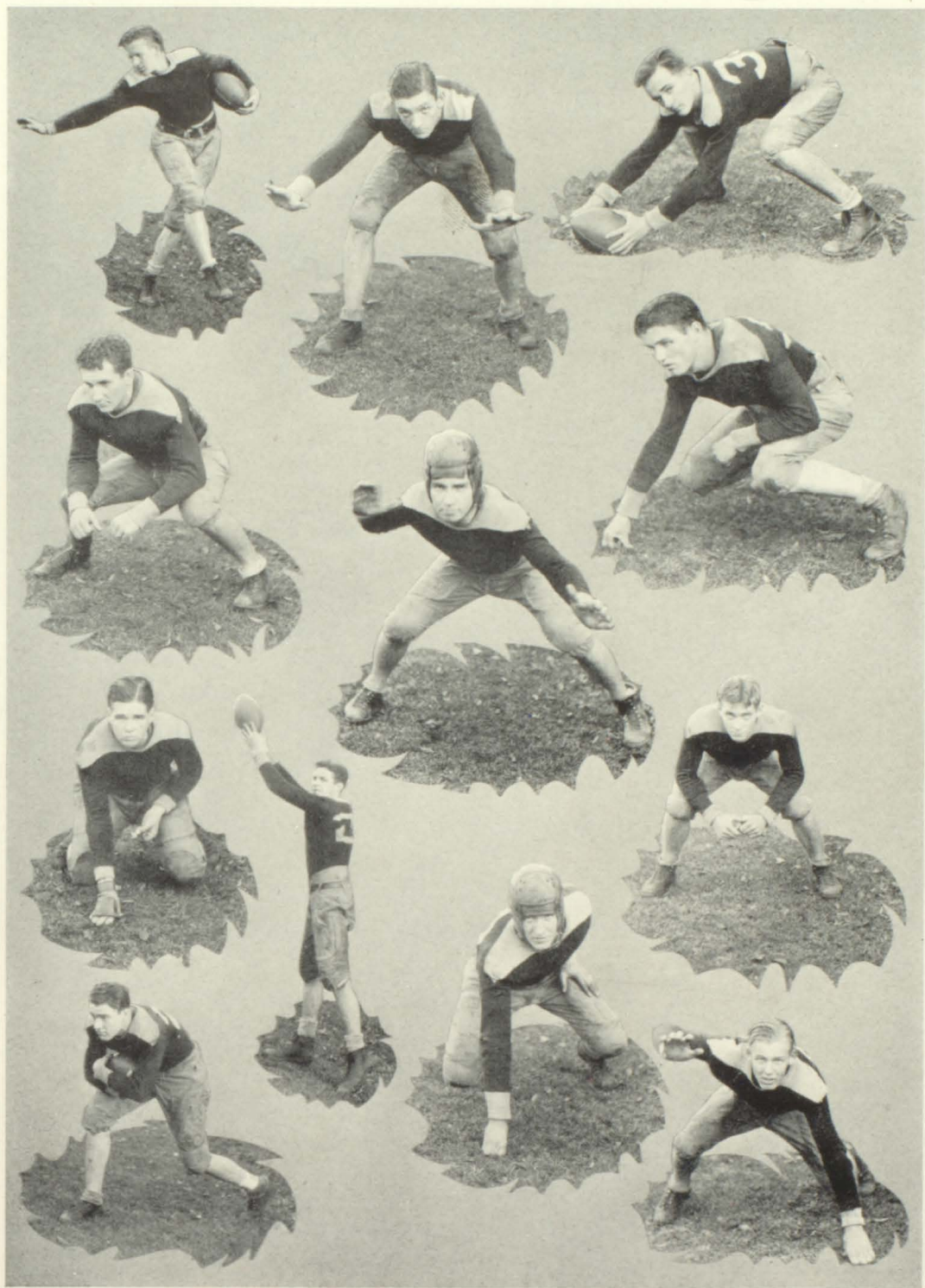
At last the day for the big game arrived. Tennessee was given a slight edge over Virginia in regard to dope, but it remained to be seen how and what the outcome would be.

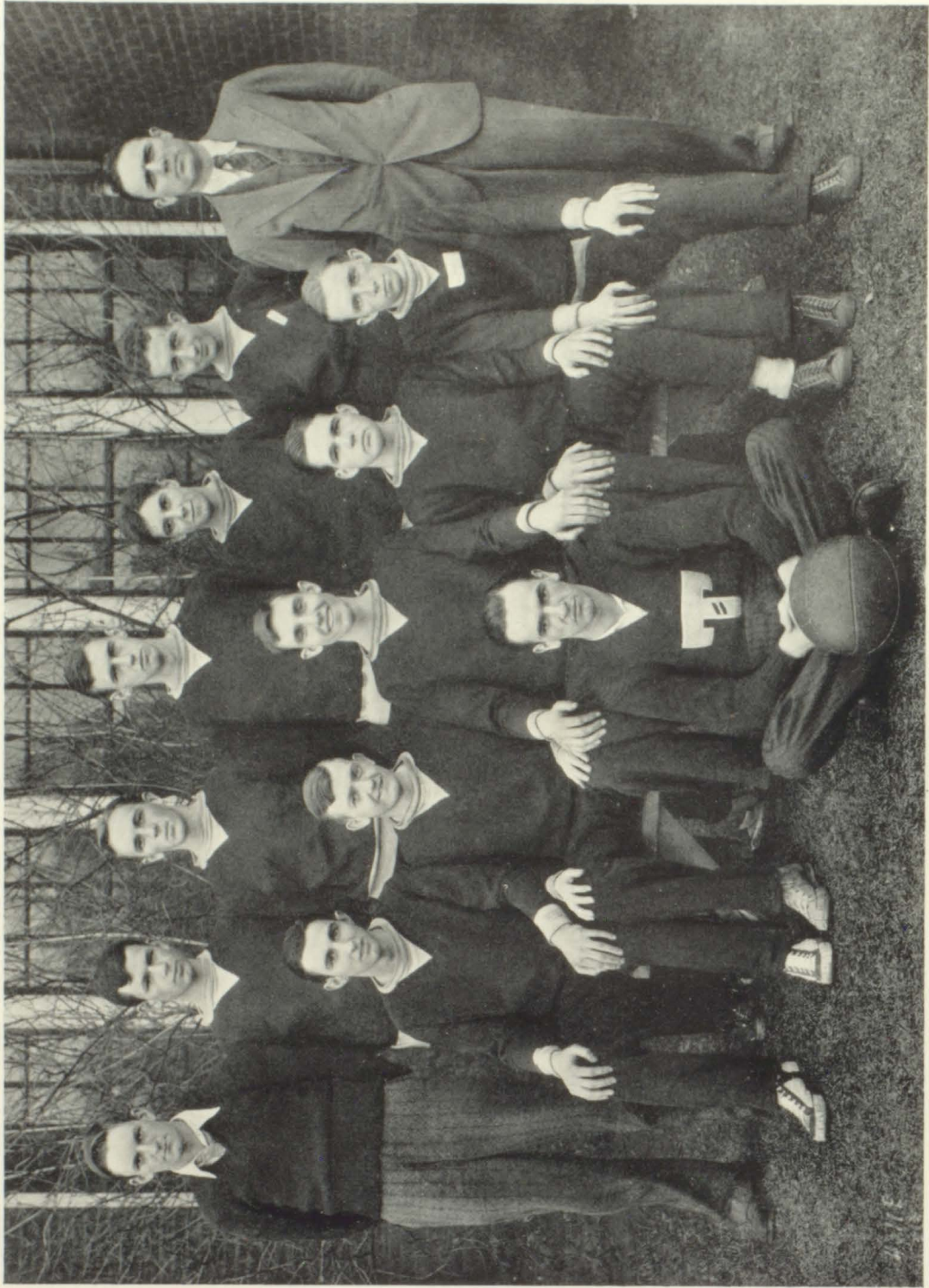
Before the game was three minutes old, a pass, from Wagner to Phipps, netted the first six points. Then the battle started. Virginia settled down and fought a beautiful battle, threatening to score several times, but lacked the necessary punch. The last quarter saw the Maroon and White's final score when O'dell, substituting for Anderson, crashed through tackle and raced 78 yards before he was finally stopped on the two yard line. Wagner plunged the remaining distance two plays later.

Tennessee climaxed a very successful season by retaining the City Championship cup for another year.

The official close of the season was marked, as usual, by the annual banquet in the Cafeteria by the P. T. A. The squad with their girl friends, the faculty, the school board, and city officials were in attendance.

Many fine toasts were pledged and letters presented to the players and the manager





BOYS' BASKET-BALL TEAM

Basket-Ball Review—1930-1931

Coach Barnhill issued the annual call for basket-ball on Monday, December first, and a squad of about thirty men answered the call. With only a couple of weeks open for practice before the first game, Coach Barnhill had a hard job trying to work out a first string quintet that would oppose Morristown here December 14.

December 14 arrived and found a team composed of Captain Pettigrew at center, Maness and Smith at forwards, and Anderson and Phipps at guards. Morristown was vanquished by a score of 24 to 19.

The Vikings seemed to find themselves after this game and three strong teams, Emory Freshmen, Erwin and Johnson City, were defeated in a row.

The next week found our old rival, Kingsport, on the way to Tennessee High for the first big game. Before a packed gym, the Vikings nosed out one of the most exciting games of the season by the score of 23 to 21.

The only blot on Tennessee's schedule came from Elizabethton who defeated the Vikings twice.

After defeating Johnson City, 34-23, the Tennesseans journeyed to Kingsport and played their best game of the season. The final score was Tennessee, 26; Kingsport, 21.

The Knoxville High Trojans were the next victims of the Vikings.

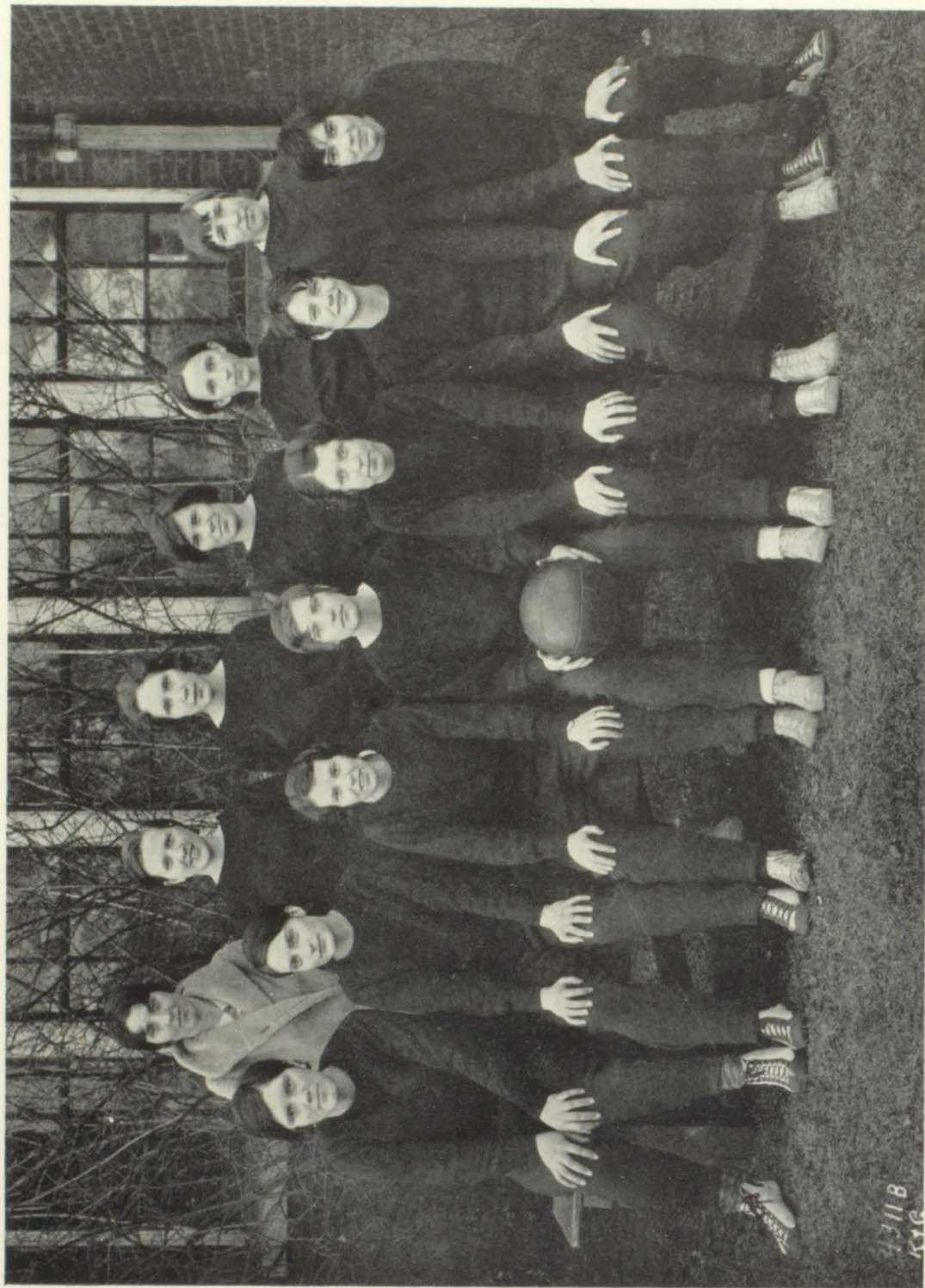
After a week of intensive training and practice, the Vikings met and defeated their ancient rivals, Virginia High, in two straight games. Their scores were: First game, Tennessee, 24; Virginia, 13; second game, Tennessee, 27; Virginia, 26.

The "Big 5" Championship was still undecided because Tennessee and Kingsport had tied for first place.

Tennessee entered the East Tennessee Tournament, held at Teachers' College in Johnson City. They played a splendid brand of ball and reached the finals with Kingsport. It was decided before the game, that the "Big 5" Championship would rest on this game. Fate and a hard fighting Kingsport team were too much for the Vikings, and they lost by a close margin.

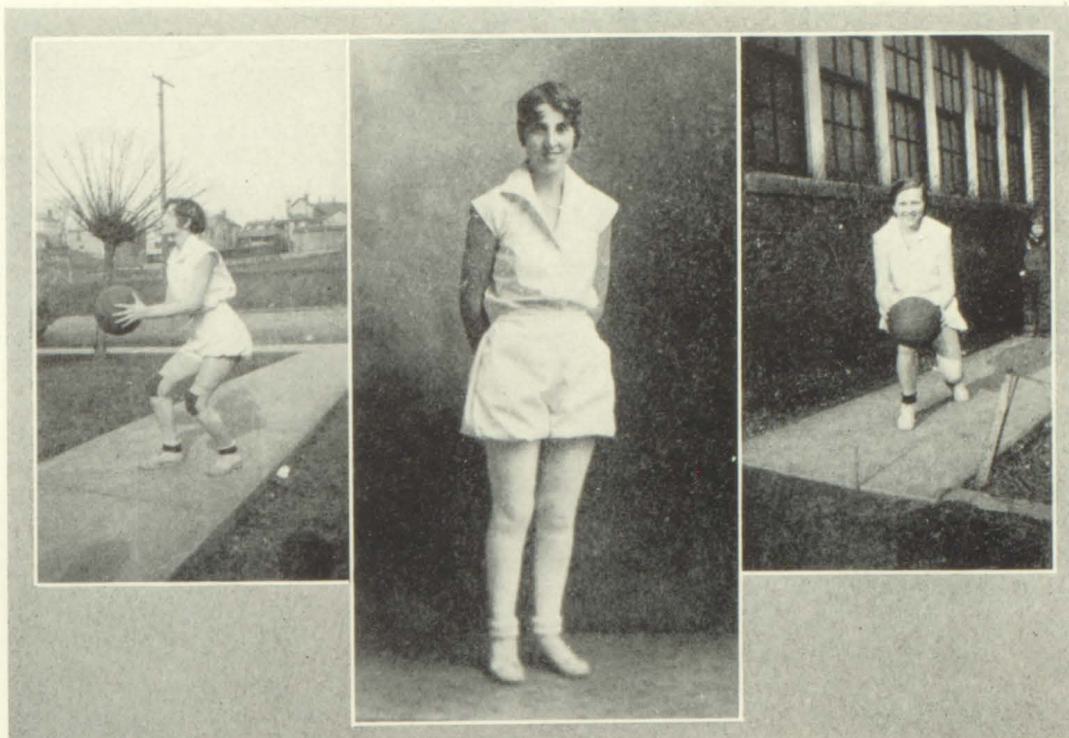
WALTER NUCKOLLS	LETTERMEN	BOB ANDERSON
BOB SMITH		EDWARD ESSER
CLYDE MANESS	W. S. TANKERSLEY	MACK FURLOW
CARL PETTGREW.....	Captain	JAMES ELLENBERG.....
		Manager
	JOHN H. BARNHILL.....	Coach

TENNESSEE	—	OPPONENTS
Vikings.....	24	Morristown.....
Vikings.....	10	Morristown.....
Vikings.....	18	Emory.....
Vikings.....	37	Erwin.....
Vikings.....	27	Johnson City.....
Vikings.....	23	Kingsport.....
Vikings.....	17	Elizabethton.....
Vikings.....	29	Erwin.....
Vikings.....	34	Johnson City.....
Vikings.....	26	Kingsport.....
Vikings.....	16	Elizabethton.....
Vikings.....	25	Knoxville.....
CITY CHAMPIONSHIP		
Vikings.....	24	Virginia.....
Vikings.....	27	Virginia.....
	<u>336</u>	<u>238</u>



THE VIKINETTES

1118
KTC



MARY BEASLEY, *Coach*

In the short time that Miss Beasley has been at Tennessee Hi she has won all our love and admiration. In her we find all the traits one could desire in a coach as well as in a friend. She is interested in our health and welfare. She has not only trained but also has disciplined the team. She taught us to play a clean, hard game; she showed us how to be good sports, not to offer alibis when we lose, not to "rub" it in on opponents when we win. Her presence of mind and good judgment have won many a game for us, and to her we owe all our success.

KATHRYN KEESLING, *Captain*

"Kat" ranks among the foremost players Tennessee Hi has produced. She is our ideal girl athlete; she loves the game and gives her best to it; she has a natural eye for the basket, shooting either long or short ones; she's fast; she pivots well, is a nice center, and is a good faker. She led her team into the game like a real captain.

LUCILE WYMAN, *Manager*

This is Lucile's first year to win athletic honors, and to serve as manager. She has that "Never-say-die" spirit, and we could always depend upon her to fight. She worked hard to keep every member of the squad in good physical condition. Dependability and sincerity are her greatest qualities—what more can be said?



MARY KEESLING, *Captain-Elect*

A wise choice was made when Mary was elected captain for next year. She has qualities of leadership. Her playing this year was outstanding. She is a fine guard, always giving the opposing team plenty of trouble. She has a sincere concern for her teammates, coupled with the sunny disposition that the spirit of a team is so dependent upon.



JUNE SMITH

Last year June proved a great "find" and she certainly lived up to all expectations this year. She is a fast, accurate, little passer and a good shot. No matter whether winning or losing, June always fights. She is a calm, dependable, player. And above all she imbued her teammates with that real Viking spirit which she possesses.



VIRGINIA LOVE

Love played a prominent part in every game this season. This is her last year and Tennessee Hi has lost a fine player. In Love we find the ability to get the ball and the speed to cover an open forward. Her versatility in shifting from guard to forward made her invaluable to the team. Besides—there's the pep she contributed.



KATHLEEN RUTHERFORD

"Rut" was new at the game this year. She showed steady improvement, and put her best in every game. Her all-round basket-ball ability and her sportsmanlike qualities were evident throughout the season. She earned the reputation of a determined fighter. We want to congratulate her on her good work at the Tournament.



JULIA RHEA—*Alternate Captain-Elect*

Julia plays a genuine brand of basket-ball. She is a persistent player and can always be depended upon. Her mind is keen and alert throughout the game, and her judgment is excellent. She has evoked the admiration of all by her splendid handling of the "hole." Have we not often heard these words—"Girls, shoot 'em long, Julia's in the hole!"

ELIZABETH LOWRY—*Alternate Captain*

We are expecting Lowry to fill an important place on next year's team. She proved her worth and her ability to check her forward all during the season. She is a steady, clear-thinking guard. Leave it to Lowry to figure out the plays and tactics of the opposition.

ALYNE FINLEY

Tennessee Hi had the great misfortune of losing Alyne in the middle of the season. She was a fine offensive player, handling the position of center well. She was outstanding because of her fast playing and quick thinking. Her influence on the members of the team was of the highest and best.

ZILPHA FOGARTY

"Zip" showed her ability this year to play the game, and a lot is expected from her next year. As a guard she can certainly get her forward "down". She's a steady scrapper and a good sport. As for pep and enthusiasm, she's the last word.

ALICE O'DELL

Alice is a good shot at long distance, as well as neat on craps. In spite of size handicap, she always gives a good account of herself. There are great center possibilities in her if she grows. She proved a valuable asset to this year's squad.

ELIZABETH PURVINE

In Purvine, we find a guard full of grit and always ready to do her part to help the team, whether winning or losing. She has the ability to "worry" her forward plenty. She's a good sport; 'nough said.



The Vikinettes' Basket-Ball Review

At the opening of the season Miss Beasley was found with the task of replacing four "first-stringers," lost from last year's team. After six weeks of hard practice, a fast, determined, little team was placed on the floor against Morristown, and succeeded in defeating them, both on foreign and home court.

In Erwin we met strong opposition, but came out on top in two games. 13 proved a lucky number for Bull's Gap. They defeated us by one point in their thirteenth successful game.

Mary Hughes had a fighting team, but we downed them twice.

Next we journeyed to Elizabethton in hopes of wiping out last year's blackmark. But we came out at the smaller end of the score, not only once, but twice.

On February 25, we left for Johnson City to enter the Upper East Tennessee Tournament. We succeeded in defeating Chucky and Mosheim, but were eliminated by Greeneville in a hard fought game. We placed two players, Captain Keesling and Virginia Love, on the All-Tournament second team.

Following the example set by our predecessors, we again won the City Championship. Two games were played, both being hard fought and close.

All in all, the season was a good one. We won 12 games and lost four, two by one point. We went to the quarter-finals at the Tournament and were defeated there by the winners of the Tournament.



Track—'30

At the conclusion of spring football training, Coach Barnhill issued the annual call for track candidates. Approximately thirty men responded and the track season was started with high hopes for the team.

The annual high school track meet was sponsored by Coach Barnhill and proved to be a great success. By his splendid efforts, Herman Smith secured the highest number of individual points.

The next weeks were spent in preparation for the "Big 5" track meet at Kingsport. Tennessee did not place so well in this meet, but was able to return with fourth place honors.

The squad's next venture was the Tri-meet held at King College. Tennessee High, Virginia High and King College were represented by teams. This meet was a huge success for Tennessee. A Tennessee man placed in every event, and eight first places were gained, giving the victory to the Tennessee squad.

Virginia High was next encountered at Tenneva Field. There, was performed one of the most exciting track meets ever held between the two schools. Virginia won by the close margin of 1-3 of a point.

Letters were given all men placing first in one event, or placing second in two events.

LETTERMEN

"SHORT" PETTIGREW
HERMAN SMITH
CHARLES PHIPPS, C.
FRANK JONES

BOB COLEMAN
ELWOOD EDWARDS
W. A. RAY

LONDON MCCONNELL *Manager*



ORGANIZATIONS

All-Students' Club Council

Fall Term
 JUDY ALLEN, *President*
 TOM WADE, *Vice-President*
 KATHERINE KEESLING
 CHARLES PHIPPS, *Treasurer*

Spring Term
 BOB ANDERSON, *President*
 JUDY ALLEN, *Vice-President*
 ANNA TAYLOR, *Secretary*
 TOM WADE, *Treasurer*

COUNCIL MEMBERS

TOM TORBETT	President Senior Class
BOB ANDERSON	President Junior Class
BUD NUCKOLLS	President Sophomore Class
CARL PETTIGREW	President Freshman Class
ELOISE WYMAN	President 8A Class
JOHN CALDWELL	President 8B Class
JOHN HENINGER	President Boys' Hi-Y
MARY ANNA STONE	President Girls' Hi-Y
MARGIE LYNN VANCE	President Literary Society
ELIZABETH PURVINE	President French Club
LUCILE WYMAN	Business Manager CADMEA
BETTS COFER	Editor Maroon and White
MARY KEESLING	President Athletic Council
LILLIAN LATTURE	President Commercial Club
BUD PHIPPS	President T Club
MARY SUE YOUNG	President Glee Club
VIRGINIA LOVE	Cheer Leader
TOM TORBETT	Captain Football
KATHERINE KEESLING	Captain Girls' Basket-ball
"SHORT" PETTIGREW	Captain Boys' Basket-ball
THOMAS H. TYLER	Principal



Chi Delta Phi

Fall Term
 MARGIE VANCE, *President*
 JOHN HENINGER, *Vice-President*
 EDITH DAVIS, *Secretary*
 BOB ANDERSON, *Treasurer*
 MISS SMITH

Spring Term
 LUCY WOOD, *President*
 MARGIE VANCE, *Vice-President*
 MARY HILTON, *Secretary*
 JOSEPHINE SENTER, *Treasurer*

LUCILE SPARGER
 AUGUSTA LEE BEIDLEMAN
 MARJORIE WHITAKER
 JOSEPHINE SENTER
 LUCY WOOD
 BONITA EGGERS
 JULIA RHEA
 ELIZABETH BOOHER
 KATHERINE WOOD

LUCY BOOHER
 LOUISE HARKLEROAD
 EULA MASSENGIL
 FRANCES MARTIN
 ALMA MARTIN
 LUCILE UMBERGER
 MARY KEESLING
 MARGIE VANCE
 MAC THOMAS

JENNIE LEVINE
 FRANCES LYNCH
 VIRGINIA DICKENSON
 KATHERINE KEESLING
 JOHN HENINGER
 VIRGINIA LOVE
 JERRY KING
 BOB ANDERSON



Girls' Hi-Y

Officers, Fall, 1930

MARY ANNA STONE, *President*
 ELIZABETH PURVINE, *Vice-President*
 DORIS HARROLD, *Secretary*
 ANNE TAYLOR, *Treasurer*
 MRS. MARNEY.....Sponsor

Officers, Spring, 1931

ELIZABETH PURVINE, *President*
 JUNE ALLEN, *Vice-President*
 GENEVIEVE WALKER, *Secretary*
 JUDITH ALLEN, *Treasurer*

MEMBERS

ALLEN, JUDITH
 ALLEN, JUNE
 ANDREWS, LOUISE
 DAVIS, EDITH
 DEVAULT, MARY
 CHILDRESS, ELIZABETH
 FRANKLIN, FLORENCE

HARROLD, DORIS
 HELTON, FRANCES
 KEESLING, KATHERINE
 KEESLING, MARY
 KING, AGNES
 PHIPPS, MARY RUTH
 PURVINE, ELIZABETH
 RAWN, THELMA

RHEA, JULIA
 NIDERMAIER, NANCY
 TAYLOR, ANNE
 STONE, MARY ANNA
 VANCE, MARGIE LYNN
 WALKER, GENEVIEVE
 WYMAN, LUCILE



Boys' Hi-Y

Purpose: To create, maintain, and extend throughout the school and community high standards of Christian character.

Motto: Service to others.

OFFICERS

Fall

JOHN HENINGER, *President*
 W. A. RAY, *Vice-President*
 BOB COLEMAN, *Secretary-Treasurer*
 DAN KING, *Sergeant-at-Arms*

MR. WILLIAMS.....Sponsor

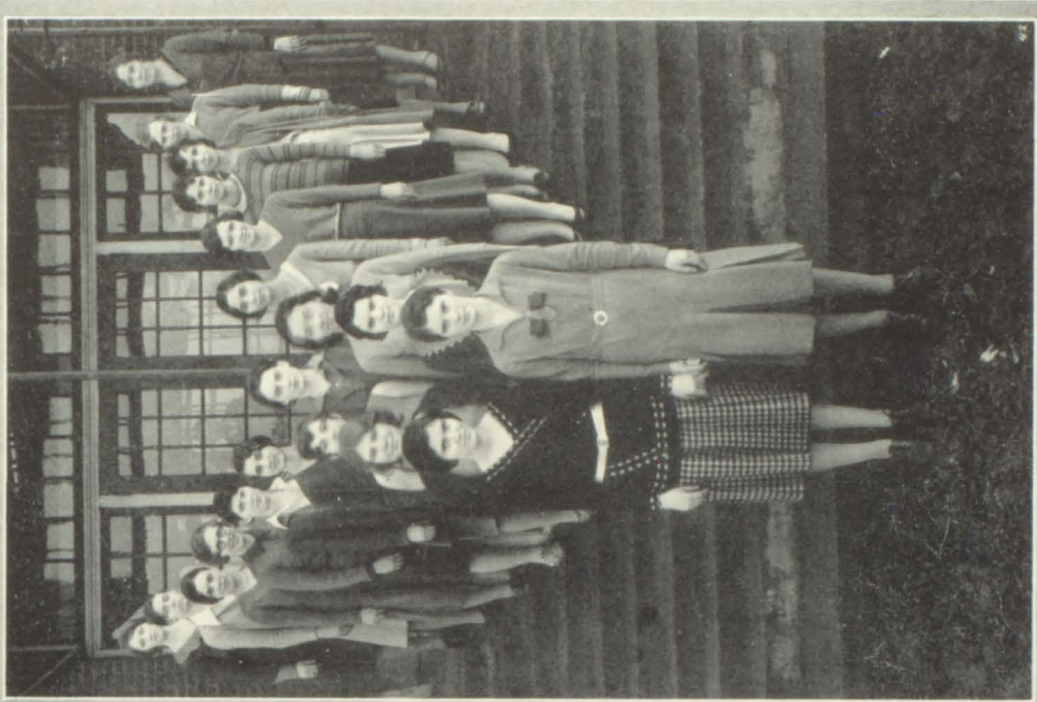
Spring

DAN KING, *President*
 ED ESSER, *Vice-President*
 BOB COLEMAN, *Secretary-Treasurer*
 JOHN HENINGER, *Sergeant-at-Arms*

ROBERT ANDERSON
 JACK BARKER
 BILLY BARKER
 ROBERT COLEMAN
 GEORGE T. DAVIS
 EDWARD ESSER
 WARREN FLEENOR

THOMAS GANNAWAY
 CLAUDE HENINGER
 JOHN HENINGER
 DAN KING
 WALTER NUCKOLLS
 HUBERT OWEN

CARL PETTIGREW
 HOWARD PHIPPS
 W. A. RAY
 ADRIAN SHUMAKER
 ROBERT SMITH
 MACK THOMAS
 MARION WARREN



Maroon and White Staff

EDITORIAL STAFF

BETTS COFER	Editor-in-Chief
GEORGE DOVE	Associate Editor
EDITH DAVIS	Managing Editor
NELL OWEN	Associate Managing Editor
MACK FURLOW	Sports Writer
VIRGINIA LOVE	Girls' Sports Writer
LUCILE UMBERGER	Joke Editor
ELIZABETH TIPTON	Columnist
MARY K. ALLEN	Literary Editor
JENNIE LEVINE	Personal Editor
SARAH M. PHARR	Alumni Editor
SARAH M. PHARR	Staff Artist
VIRGINIA CARR	Exchange Editor
EMILY WADE	Local Editor
JERE KING, EDWIN POWERS, KELLY MCKEE	Reporters

BUSINESS STAFF

KENNETH BOOHER	Business Manager
DONALD BAIRD	Advertising Manager
JOHN MARCY	Assistant Advertising Manager
EUGENE BROWN	Circulation Manager
SARAH HAMLET, OLA GOODMAN, LILLIAN LATTURE	Typists
MISS FEINSTEIN	Faculty Adviser
MR. WILLIAMS	Assistant Faculty Adviser



Commercial Club

Fall Term

LILLIAN LATTURE, *President*
 ROBERT ANDERSON, *Vice-President*
 THELMA RAWN, *Secretary*
 VIRGINIA CARR, *Treasurer*
 MISS MOORE

Spring Term

ELIZABETH CHILDRESS, *President*
 BONNIE WEAVER, *Vice-President*
 LILLIAN LATTURE, *Secretary*
 NANCY NIDERMAIER, *Treasurer*
 Sponsor

ROBERT ANDERSON
 MARY BLEVINS
 VIRGINIA CARR
 ELIZABETH CHILDRESS
 VIRGIL CLAMAN
 MARY CLARDY
 HAZEL COLLINS
 KATHARINE COOK
 MARY DEVAULT
 FRANCES ELLENBURG
 JAMES ELLENBURG
 FLORENCE FRANKLIN
 DELMER FLEENOR
 PAUL GLOVER

MEMBERS
 OLA GOODMAN
 MYRTLE GREER
 SARAH HAMLET
 LILLIAN LATTURE
 GRADY LEE
 VIRGINIA LOVE
 LOUISE MORTON
 HAZEL MCCLELLAN
 EFFIE MAE NELSON
 NANCY NIDERMAIER
 MARTHA O'DELL
 TOM O'DELL
 MARGARET OWENS

HENRY PROFFITT
 THELMA RAWN
 NELIA RICHARDSON
 LUCILLE SPARGER
 BEULAH SWINEY
 PAUL SWINEY
 MABEL THOMAS
 TED VANCE
 MARGARET WARREN
 BONNIE WEAVER
 ELIZABETH WHITE
 GLADYS WHITE
 ADA WHITAKER
 KATHARINE WOOLSEY



Athletic Council

MARY KEESLING.....President
BOB ANDERSON.....Vice-President
MARY SUE YOUNG.....Secretary
MISS OWEN.....Sponsor and Treasurer

ROLL

MITCHELL ALLEN
BOB ANDERSON
LOUISE ANDREWS
H. C. BONDURANT
MARY DEE BUCKLES
RUTH BUCKLES

EARLENE DENTON
BONITA EGGERS
LOUISE HARKLEROAD
MARGARET HUFF
MARY KEESLING
DICK RESER

NELIA RICHARDSON
ISABELLA SHIRREFFS
HELEN SMITH
BILL TIPTON
ELOISE WYMAN
MARY SUE YOUNG



Public Speaking Class

"An Open Forum"

BETTS COFER
GEORGE DOVE
GEORGE DAVIS
LOUIS KING
JOE LESLIE
KERMIT LINDAMOOD
JAMES SMALLING

ROBERT SMITH
ERNEST STULTZ
WILLIAM KING
SARAH SENEKER
CHARLES KINCH
JACK SIMPKISS
MARY FRANCES BARBE

RICHARD RESER
LEONARD BROWN
VIRGINIA LOVE
Manager
W. G. RUTLEDGE
Coach



Tennessee High School Band

MR. CATALDO, <i>Conductor</i>	WALTER NUCKOLLS	JULIAN SISLER
<i>High School</i>	TED PERRY	HERBERT SMITH
REEVE BOY	GEORGE SMALLING	<i>Fairmount School</i>
DAVID BRUMIT	LOUISE STANSBURY	ADAMS
JOHN CALDWELL	JAMES WOLFORD	GEORGE ANDERSON
KATHRYN COOK	<i>Anderson School</i>	CLYDE BRITT
ELIZABETH COOK	EUGENE BAKER	ELTON DUTTON
ROBERT COWAN	ERNEST FORD	SAM DYKES
TAYLOR COWAN	STACY GRAYSON	EUGENE FLETCHER
GEORGE DAVIS	JAMES HAMILTON	WILLIAM JOHNSON
NANCY EMMERT	HARRY PATTON	JAMES KING
DRYDEN FLEENOR	A. C. VIRES	NORMAN MASSENGILL
PAUL GLOVER	DAVID WOLFORD	CECIL MCCLISTER
MARY ELIZABETH HAYNES	<i>Fifth Street School</i>	ROLLIN POST
CLIFTON HARR	FRANCES CALDWELL	HARRY PERRY
KEN HICKS	WILLIAM DIX	HAMPTON RICHARDSON
CHARLES HAWKINS	RALPH DIXON	BRITTON SCHERER
JERE KING	WRAY FRANKLIN	CHARLOTTE SENTER
BURTON, KINNY	CLIFFORD KESNER	WILLIAM THOMAS
ROBERT LESLIE	JANICE KENSINGER	SYDNEY WHITTAKER
EVELYN LOWE	VIRGINIA RAWN	GEORGE WYMAN
KERMIT MORLEY		



"T" Club

OFFICERS

HOWARD PHIPPS	<i>President</i>
KATHRYN KEESLING	<i>Vice-President</i>
JUNE SMITH	<i>Secretary</i>
MISS BEASLEY, MR. BARNHILL	<i>Sponsors</i>

BOB ANDERSON	KATHRYN KEESLING	ELIZABETH PURVINE
BILLY BARKER	MARY KEESLING	W. A. RAY
JACK BARKER	VIRGINIA LOVE	HAROLD ROBERTS
BOB COLEMAN	ELIZABETH LOWRY	JUNE SMITH
EDDIE ESSER	S. L. O'DELL	DENNIS SPARGER
TOM GANNAWAY	HUBERT OWEN	W. S. TANKERSLEY
BILL GREENE	CARL PETTIGREW	TOM TORBETT
CLYDE HELTON	HOWARD PHIPPS	GLENN WAGNER



Glee Club

OFFICERS

Fall Term

MARY SUE YOUNG, *President*
 MARGARET MONTGOMERY, *Vice-President*
 MARY DE BUCKLES, *Secretary*
 LOUISE STANSBURY, *Treasurer*

Spring Term

MARY DE BUCKLES, *President*
 KATHERINE EARHEART, *Vice-Pres.*
 GAYNELLE COMBS, *Secretary*
 ALICE CALDWELL, *Treasurer*

MRS. HAYES.....Sponsor

MILDRED ARNOLD
 ELIZABETH BRINKLEY
 MARY DE BUCKLES
 ALICE CALDWELL
 GAYNELLE COMBS
 ELIZABETH COOK
 KATHLEEN EARHART
 MARY LEE

LINDA MARSHALL
 MARGARET MONTGOMERY
 LOUISE NEEL
 BYRTLE PHIPPS
 LEOLA RAY
 ELIZABETH TOLLINS
 ELEANOR SOLOMON
 LOUISE STANSBURY
 RUTH WASSON

EDYTHE WEBB
 MILDRED WHITEAKER
 HELEN WILLIAMS
 ELOISE WYMAN
 MARY SUE YOUNG
 KATHERINE KESNER
 ELIZABETH HAYES
 ELSIE WHITEAKER



French Club

Fall Term Officers

ELIZABETH PURVINE, *President*
 DORIS HARROLD, *Vice-President*
 MARY RUTH PHIPPS, *Secretary and Treasurer*

Spring Term Officers

ALMA LEE MARTIN, *President*
 ANNE TAYLOR, *Vice-President*
 EDITH DAVIS, *Secretary and Treas.*

MISS DRYDEN.....Sponsor

ROLL

JUDITH ALLEN
 JUNE ALLEN
 LOUISE ANDREWS
 AUGUSTA LEE BEIDLEMAN
 MARY BERENS
 LEONARD BROWN
 EDITH DAVIS
 MARY DEVAULT
 BENJAMIN GREEN
 DORIS HARROLD
 FRANCES HELTON

MARY KEESLING
 LILLIAN LATTURE
 VIRGINIA LOVE
 ELIZABETH LOWRY
 ALMA LEE MARTIN
 ARBUTUS McCROSKEY
 LOUISE MCGOLDRICK
 GORDON MOONEY
 NANCY PEOPLES
 MARY RUTH PHIPPS
 THELMA RAWN

RICHARD RESER
 UNA MAE ROGERS
 SARA SENEKER
 JACK SIMPKISS
 JAMES SMALLING
 ALMA SMITH
 ANNE TAYLOR
 MARGIE VANCE
 GENEVIEVE WALKER
 HAZEL WILLIAMSON
 LUCILE WYMAN



Log of the Good Ship "Viking"

SEPTEMBER

- 14.—School opens. Many former students desert their Alma Mater for V. I. and Sullins.
- 15.—Mr. Tyler gives an eulogy on the extra-curricular period.
- 16.—The Ten Ways to Earn Your Lunch Money Club revives its old meeting place on the corner of Alabama and Waterloo.
- 17.—The Sub-Freshies are initiated into the "Royal Order of the Shower."
- 18.—Feminine hearts thrill at the arrival of Glen Wagner and "Monk" Helton.
- 19.—Tennessee High trounces Emory and Henry Frosh. to the count of 20-14.
- 21.—Charlie Phipps forms the Bachelor Club (with the assured following of W. S. Tankersley).
- 22.—"Mashed" potatoes served at Cafeteria(?).
- 26.—Mountain City falls before the Maroon and White Vikings, 20-6.

OCTOBER

- 1.—Tom Torbett elected President of Senior Class.
- 2.—Miss Mary Beasley takes the place of Miss Jack as Physical Education Director.
- Basket-ball practice begins.
- 3.—Tennessee rolls up another victory at Erwin.
- 6.—First issue of *Maroon and White*.
- 7.—Hi-Y girls initiated. New fashions exhibited.
- 10.—Morristown wallops Tennessee High.
- 13.—Commercial Club is organized.
- 15.—Organization of Literary Society—christened Chi Delta Phi.
- 17.—Boys win "pig-skin" battle from Johnson City, 31-6.
- 18.—*The Tavern* becomes a popular "hang-out" for Tennessee High students.
- 21.—Class Tournament in girls' basket-ball begins.
- 23.—Girls' Hi-Y hostesses at Kesner Golf course.
- 25.—Kingsport sweeps to a 13 to 6 victory over fighting Tennesseans.
- 30.—Faculty take a meager vacation, attending E. T. E. A. at Knoxville.
- 31.—T. H. S. wins another victory over Betsy-Town, 20-0. Witches prepared for frolic(!?).

NOVEMBER

- 3.—Football boys are getting rushed. Look out, girls, the banquet is ahead!
- 5.—8B Class tutored in use of Library.
- 6.—Honesty staged in school!! *Maroon and White's* walk off.
- 7.—Anne Taylor, Mary DeVault, "Red" Rawn prefer K. C. boys over Tennessee High boys. Now, I ask you, is that fair?
- 11.—Armistice Day. Girls sell forget-me-nots.
- 12.—Cadmus Club active!
- 13.—Trig. class goes on outing—Miss Owen out-talks sheriff.
- 14.—Since the buying of coupon books, Isis Theatre becomes popular amusement place for Tennessee Hi students.
- 15.—Tennessee trounces Greeneville, 25-0.
- 18.—David Gray, Tom Wade, and a few others of the male sex join the "grades mania" class.
- 19.—Biology class seeks "man about a dog."

- 21.—Tennessee wins City championship. Black and White Review proves a most entertaining minstrel. Who broke that window?
- 24.—Boys' Class Tournament.
- 25.—Faculty give the Juniors a defeat. Mr. Tyler scores in the early part of the quarter???
- 26.—Assembly, sponsored by Freshman Class.
- 27.—Thanksgiving holidays! Hooray for Turkey!

DECEMBER

- 1.—School opens for business (?) after a recess of four days.
- 3.—Eddie Esser tries his skill as a barber.
- 4.—Girls win first basket-ball game from Alumni team, 22-17.
- 5.—Carnival proves a huge success. "Babe" Roberts wins his lady fair.
- 6.—Football banquet. Bud Phipps elected to Captain the Viking ship.
- 8.—Mr. Williams entertains his chemistry class with one of his "eazy" quizzes.
- 9.—All-Students' Club sponsors Evangelistic program.
- 10.—Fire crackers cracked profusely in the halls.
- 11.—Bob Anderson shows his skill at hypnotizing, his victim being Dick Reser.
- 12.—Sulphur experiment in Chemistry!!
- 13.—Viking ship sweeps victoriously into port as the first cage game is won from Morristown.
- 16.—Cadmus Club meeting. Those ads!! Oh! (censored!)
- 17.—Glee Club presents very interesting and appealing chapel program.
- 18.—One-fifth of exams given. The first hundred questions are the hardest.
- 19.—Vacation!
- 25.—Stanta gives students a surprise.

JANUARY

- 1.—New Year comes in with a bang.
- 5.—Holidays end (with many a sigh). Brilliant array of new ties (!), etc.
- 6.—Vikinettes conquer Morristown. "Eddie" and "Bud" visit Morristown too long!!!
- 7.—Doris Harrold finds wonderful inspiration in Literary Society Bulletin Board. Cause unknown???
- 9.—Vikings down Emory and Henry Frosh.
- 12.—Another Monday!!
- 13.—T. H. S. takes double-bill from Erwin. Vikinettes develop sudden liking for Hotel lobby!
- 14.—Assembly sponsored by Literary Society.
- 16.—Boys subdue Johnson City. Girls lose to Bull's Gap by one point.
- 19.—Cramming begins.
- 21.—Exams. Alas!
- 22.—Theme song—"You're Driving Me Crazy."
- 23.—**!!!!???
- 26.—School presents a scene of varied emotions—exam. grades are discovered.
- 28.—Robert Anderson presented with Constitution and seal of All-Students' Club by Judy Allen, the retiring President.
- 30.—Elizabethton subdues Tennessee cagesters.

FEBRUARY

- 2.—Sub-Freshmen attend potato matinee at Columbia Theatre.
- 3.—Tennessee takes two from Erwin.
- 4.—Band concert in Assembly.
- 5.—Betts Cofer gets to school on time!!
- 6.—Vikinettes wallop Piney Flats.
- 7.—Vikings conquer Johnson City. Bob Smith develops an eye for the "bucket."
- 9.—Sub-Freshmen still shy of first and second floors. Do you blame them?
- 10.—Boys win first game of City Title.
- 11.—Play presented in chapel by Kingsport Dramatic Club, "Gimme Them Peanuts."
- 14.—Valentine banquet held by Hi-Y Clubs.
- 16.—New Hi-Y boys initiated into Club.
- 17.—Mr. Tyler loses his Chrysler car; tries luck with Studebaker.
- 18.—New lockers purchased. The problem is—don't lose the key!
- 19.—Vikings trounce Knoxville.
- 20.—Vikinettes win first game of city series, 22-13.
- 23.—Tennessee Vikings beat Virginia High, 27 to 26, and capture City Championship.
- 25.—Tournament at Johnson City.
- 26.—Girls and boys have remarkable record.
- 27.—Boys are "runners-up." Another cup for our trophy case!

MARCH

- 2.—Red hair becomes popular at Tennessee High.
- 3.—Minstrel practice begins.
- 4.—Students' Club gives Assembly program. Mack Furlow gives a lecture on Inspiration and Perspiration?!?
- 5.—Vikinettes win City Title! Just another candy supper!
- 6.—"Bob" Anderson and "Shorty" Pettigrew study astronomy at Erwin.
- 10.—Tennessee Seniors win over Virginia Seniors in the last cage game of the season. Virginia boys take a liking for maroon sweat shirts.
- 11.—Physical Ed. girls give performance in Assembly.
- 13.—Minstrel comes off with a big bang.
- 16.—Boys begin spring football practice in snow.
- 17.—All-Students' Club have meeting behind closed doors.
- 18.—Maroon and White sponsors school statistics—Beulah Witt receives vote for most bashful?!?
- 19.—Many Tennessee High boys placed on All-Tourney Team—held at Y. M. C. A.
- 20.—Coach Thayer visits the school. His prospects seem great.
- 21.—Sprig is cub!!
- 25.—"Dearest Thing in Boots" displays Senior dramatic (?) talent.
- 30.—Boys' Hi-Y help form a Hi-Y organization at Blountville.
- 31.—Shows crowded with T. H. S. students. Fifteen for "early bird." Hooray for the waterworks (and a holiday!).

APRIL

- 1.—Fooled again.
- 2.—Tenn.-Va. spring football game. Easter Holidays.
- 3.—And have you heard about Tennessee High's exclusive "Catt" Club?
- 10.—Members of Junior Class "Kicked Out of College."
- 15.—CADMEA starts its last long voyage. "Bon voyage" for me too.



The Vikings Anchor

True sons of the Vikings now we be,
We've sailed afar the unknown sea,
Thru tempest blast and breathless days,
Thru dawn's damp mists, thru sunset's haze.
The anchor falls; the ship is fast;
The conquest won, the strife is past.
The crew ashore and comrades part,
Each holding a part of the other's heart.
Good fortune attend us, may life be long!

The low sun tints the gentle sea
With a thousand, dying changing hues.
The Vikings part, but memory lives,
As they wander far—Alone!



ADVERTISEMENTS

Virginia Intermont College

*Member of the Association of Colleges and
Secondary Schools of the Southern States*

An endowed Junior College and High School for young women, founded in 1884. Large, beautiful bluegrass campus high among the mountains surrounding Bristol. Home-like atmosphere, with finest traditions of the old South. Outdoor sports, gymnasium, pool, beautiful buildings, private baths. Modern gymnasium being built during summer of 1931.

Courses leading to graduation from the regular two-year junior college classical course: Teacher Training, Home Economics, Physical Education, Speech and Dramatic Art, Secretarial or Business, Public School Music, Piano, Organ, Voice, Violin, and Art.

Due to endowment Intermont has a limited number of Scholarships to offer Bristol girls. Over 160 students from Bristol and vicinity the past session.

For full information apply to

H. G. NOFFSINGER, President

POLICEMAN (to motorist, who nearly collided): "Don't you know that you should always give half of the road to a woman driver?"

MOTORIST: "I always do, when I find out which half of the road she wants."

PROFESSOR WILLIAMS: "When water becomes ice, what is the greatest change that takes place?"

MARY KEESLING: "The price, sir."

Visit the
New and Magnificent

Paramount Theatre

A Step Forward
in Superb Entertainment

Knox Stoves and Ranges
are sold exclusively by

BALL BROS., Inc.

Sixth and Shelby Streets
Bristol, Tenn.

When in need of Shoes you will find
BETTER VALUES at



MANION COWAN, Proprietor

D. B. RYLAND & CO.

Jewelers

Gift Shop

SECOND FLOOR

MOORE-EARHART CO.

Athletic Goods

647 State Street, Bristol, Virginia

COMPLIMENTS OF

BOYS' AND GIRLS' HI-Y

Mitchell-Powers Hardware Co., Inc.

1880—1931

51 Years of Honorable Service

Distributors for Lyric Radios, House Furnishings, Paints
Hardware, Mill and Mining Supplies
and Kindred Lines

BRISTOL, VIRGINIA

COMPLIMENTS OF

COX WHOLESALE COMPANY

The Cash Grocery House

LYNN-KAYLOR CO., Inc.

Bristol's Greatest Grocery Store

Corner Sixth and Shelby

"A GROCERY STORE THAT'S DIFFERENT"

SERVICE MILL COMPANY

Manufacturers of

SIMPLY GRAND FLOUR



"White and Light"

New York Shine Parlor

Hats Cleaned
and Blocked **50c**

Expert Service
New Equipment

"It Costs Less at Sterchi's"



Sterchi Bros. Stores, Inc.

Quality Furniture

Inter-Mountain Telephone Company

Wants You For a Friend

Long-Distance Service That Satisfies
Whenever you want to talk to any-
one, anywhere, call

L O N G - D I S T A N C E

G. M. & G. C. STONE, Architects

510 Shelby Street

COMPLIMENTS OF

The Vogue

**LESLIE SHEET
METAL WORKS**

Tin and Slate Roofing and
Skylights

Guttering, Spouting and
Furnace Work

Galvanized Iron Cornices

SMITH FLORAL COMPANY

(Opposite Cameo Theatre)

Flowers For All Occasions

COMPLIMENTS OF

DR. HARRY E. LOVING, *Dentist*

**Bristol Commercial
College**

Thorough instruction in Bookkeeping, Gregg Shorthand, Touch Typewriting, English, Spelling, etc. Catalogue sent on request.

J. T. HAMRICK, President
Bristol, Va.-Tenn.

Compliments of

Charles Minor Gore

COMPLIMENTS OF

PIEDMONT SERVICE STATION

**C & C GROCERY CO. *Fresh Meats and
Groceries***
J. S. LEONARD, Owner

106 East State Street

Phone 292

We Accommodate

The Bristol Insurance Agency

All Forms of Insurance

8 Sixth Street

Phone 1495

Bristol, Tenn.

The Great American Value



DRUGAN MOTOR CO.

Seventh and Shelby Streets
Bristol, Tennessee

Compliments of

Levison's

MISS SMITH (taking up examination paper): "Why the quotation marks all over this paper?"

BOB SMITH: "Courtesy to the man on my right."

"Ugh, there's a worm in this apple!"

"Here, take a drink and wash it down."

"Wash it down, nothing. Let the beggar walk."

Everybody says

HAV-A-TAMPA

The Largest-Selling Cigar
in the South

COWAN BROS.

Buy Your Drugs from an
Old Alumnus

Clyde Reser
The Owl Drug Co.

409 State Street

Furrow Electric Co.

Established 1921

Electrical Contractors

515 Broad Street Phone 469-W
Bristol, Tenn.-Va.

House Wiring, Fixtures
Supplies

The Annora Beauty Shoppe

(on balcony of Colonial Tea Room)

"We Develop Your Beauty"

All Kinds of Work Pertaining to
Beauty Culture

Phone 1251 State Street

The Coffee and Tea Store

C. D. Kenny Co.

715 State Street

Our NORWOOD COFFEE
has no equal

Free City Delivery
Phone 213

BALL BROTHERS

Furniture

Sixth and Shelby Streets
Phone 165

Easy Payments

BRISTOL TYPEWRITER CO., Inc.

Office Outfitters

BRISTOL, VA.

COMPLIMENTS OF

DR. W. W. HURT, *Dentist*

COMPLIMENTS OF

BRISTOL CANDY COMPANY, Inc.

Manufacturers and Wholesale
CONFECTIONERS

201 Eighth Street

Bristol, Tennessee

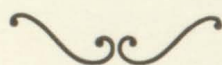
J. T. CECIL, President
R. B. MITCHELL, Vice-President
J. D. MITCHELL, Vice-President

C. T. WOLFE, Sec'y and Asst. Treas.
H. E. JONES, Treasurer
J. A. SLAUGHTER, Mgr. Sup. Dept.

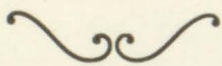
Capital, \$300,000.00

Interstate Hardware & Supply Company

General Hardware
Mill and Mine Supplies



Electrical Supplies, Plumbing Goods
Automobile and Garage Accessories



Bristol, Va.-Tenn.

Your Films Can Be Developed But Once
WE DO IT RIGHT

KELLY & GREEN
514 Cumberland Street

Kodaks, Films, Photo Finishing, Enlarging, Framing

QUALITY TAILORS, Bristol, Tenn.
Suit or Top Coat **\$25.00**
Made to Order

JUNE SMITH: "What is puppy love?"
ED ESSER: "Why, don't you know?"
JUNE: "No."
ED: "It's the beginning of a dog's life."

MACK THOMAS: "Mrs. Berghauser, is that poem written in prose or in poetry."
MRS. BERGHAUSER (very consolingly): "In poetry, Mack."

COMPLIMENTS OF

Tennessee High School Band

BOGGS-RICE CO., Inc.

Furniture

Bristol, Tennessee

Southern Ice Cream Co.

**Southern Maid
Ice Cream**

COMPLIMENTS OF
Blevins-Akard Funeral Home



**Faucette Company
China Store**

806-808 State Street

*About Everything in China and
Kindred Lines*

Special Values in Hosiery
for Men, Women and Children

WHOLESALE and RETAIL

Compliments of

*Bristol, Virginia-Tennessee
Chamber of Commerce*

WHERE else can boys and girls in their teens find wearables in such variety as at King's. Specialized buying for individualized departments makes for satisfaction in details more important now than ever before.

Now, more than ever, style, fit, and quality are requisites for correct wearables for both boys and girls of the teen ages. That's why boys and girls, as well as their parents, know King's as a style center. That's why so many boys and girls find at King's just what suits them best, just what distinguishes them as being well dressed for every occasion.

THE H. P. KING COMPANY
BRISTOL

KELLY M. GODSEY

Fresh and Cured Meats and
Country Produce

Phone 350

406 State Street
Bristol, Va.-Tenn.

Bristol Floral Co.

418 State Street
Bristol, Tennessee

We cordially invite you to come and
see the flowers at any time.

"We Grow Them"

Montgomery- Ward Co.

801-805 State Street

Phone 1900

Bristol, Va.-Tenn.

Compliments of

General Shelby Hotel



*Bristol's Only Fireproof
Hotel*

COMPLIMENTS OF

BRISTOL BUILDERS SUPPLY CO.

BRISTOL DOOR AND LUMBER CO.

DOMINION LUMBER AND SUPPLY CO.

MINOR'S

24

Senior's Steam Laundry

QUALITY SERVICE

STORES

Thirty of Bristol's Most Modern
Sanitary Home Grocery Stores



PROF. ROWE: "Do you know how to count the horsepower of a car?"

TOM GANNOWAY: "No."

PROF. ROWE: "Easy. Just raise the hood and count the plugs."

Please do not (horrid word) on this street car.

Best for Everything
RED BAND FLOUR

SPARGER MILL COMPANY



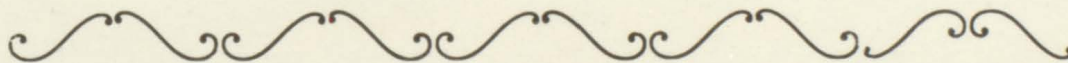
F O R

Good Photographs

GO TO

**BOY'S
STUDIO**

403½ State Street
BRISTOL, VIRGINIA



COMPLIMENTS OF
PIGGLY - WIGGLY

L. R. PETERS

35 Sixth Street

Staple and Fancy
Groceries
Phone 120

Compliments of

**L. C. KING
COMPANY**

Manufacturers of
Pointer Brand Overalls
and Work Shirts

**Seventh Street
Coal Company**

High-Grade Domestic
COALS

Yard and Office, foot of 7th St.
Telephone 1208

A GOOD DRUG STORE

THE GOOD DRUG STORE of today is more than a Drug Store. Although prescriptions are the dominating part of a Drug Store, nevertheless, you can find not a few, but many of the necessities of every home and individual need. The Drug Store is one of the leading factors in the progressiveness of any community.

Buntings

“BRISTOL'S LEADING DRUG STORE SINCE 1869”

FOR HEALTH'S SAKE *EAT* WINNER BREAD

BECK'S
EST
READ

BECK'S BEST BREAD, Inc.

BRISTOL
VIRGINIA-TENNESSEE

Mrs. Berghauser was conducting an intelligence test. Suddenly she pounced on a student.

"How many make a million?"

"Not many," said Bob Coleman.

He passed.

MACK THOMAS: "Can you imagine anyone going to bed with their shoes on?"

JOHN HENINGER: "Who does that?"

MACK: "My horse."

HOME BEAUTIFIERS

Wall Paper, Paint
and Varnishes

Swan's

Painting and
Paper Hanging

16-18 Sixth Street

Bristol, Tennessee



ANNUAL

Experts

THE art of book making as developed in the 20th century requires the highest degree of skill. It demands artistic handling of type faces, many of which have a classic beauty in themselves. High grade presswork, which necessitates hours of tedious make-ready to bring out the contrast of light and shadow found in every engraving. And last, but not least, the bookbinding—the art preservative that cares for your book for years to come. Yes, we do all these things, and many more and our journeymen take pride in producing books, especially College Annuals, of which all of us are proud.

The King Printing Company

Printers, Engravers, Bookbinders

Bristol, Tennessee

KING COLLEGE



King College, Bristol, Tennessee, is a four-year, co-educational, Christian institution under the Synod of Appalachia.

Its faculty is composed of men and women with broad, thorough preparation and successful teaching experience.

Its student body, beginning in September, will consist of young women and young men from many of the most cultured and respected families in this and various other sections.

Its summer program of improvements will put the College plant and equipment on a par with colleges in this section.

Its regulations and discipline will be conducive to Christian character and thorough scholarship.

Its extra-curricular activities will be supervised and directed by experts, and prove helpful and enjoyable to each student.

King College is a safe, sane place to send young men and women for a thorough, Christian education.

For further information, address—CHARLES W. HENRY, *President Elect*.

Think It Over!

Your best investment next to *Education* is your *Personal Appearance*.

We can help you with the latter.

High School and Prep Suits Galore

SMITH-BLAKLEY CO.

Stone Lumber Company, Inc.

Established 1894

Lumber and Mill Work and Builders' Supplies

Office—Third and Fourth Sts.

The 1930-1931 Board of Education extends greetings to all members of the Senior Class.

MRS. W. R. STONE, *Pres.*

J. E. ARRANTS, *V. Pres.*

J. G. WYMAN, *Sec. Treas.*

C. G. KING P. B. SENTER

G. T. THOMAS

Meet Your Friends at

The Tavern

22 Moore St.

BRISTOL, VA.

"The Sweetheart of Bristol"

Autographs

Autographs

Autographs

Autographs



